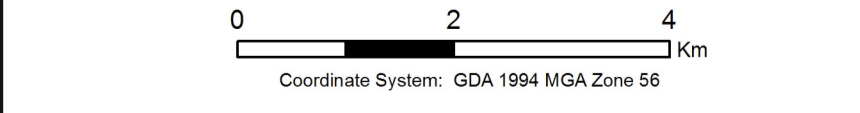
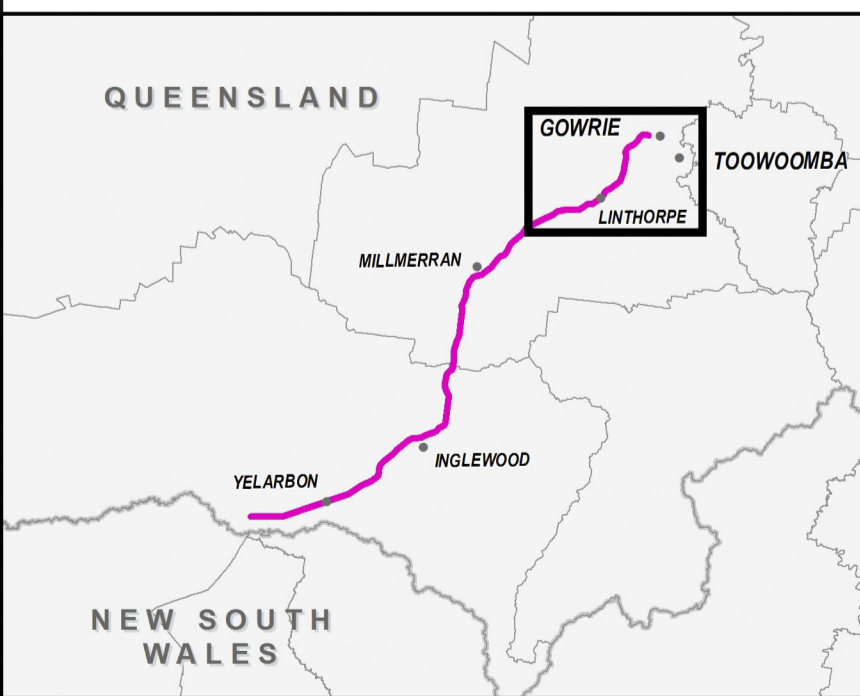


**INLAND RAIL** **ARTC**

The Australian Government is delivering Inland Rail through the Australian Rail Track Corporation (ARTC), in partnership with the private sector.

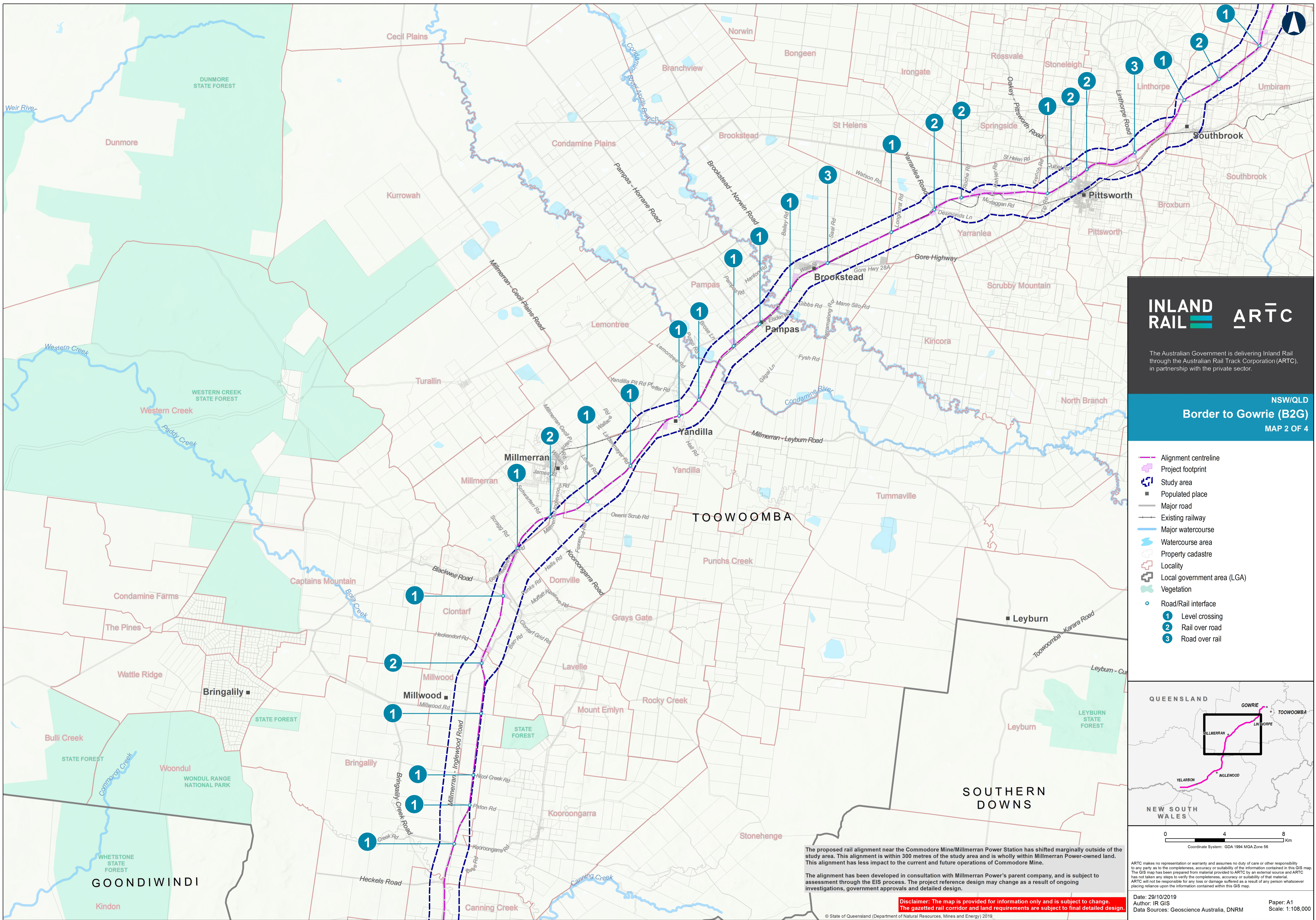
NSW/QLD  
**Border to Gowrie (B2G)**  
 MAP 1 OF 4

- Alignment centreline
- Project footprint
- Study area
- Populated place
- Airport
- Major road
- Existing railway
- Major watercourse
- Watercourse area
- Property cadastre
- Locality
- Local government area (LGA)
- Vegetation
- Road/Rail interface
- 1 Level crossing
- 2 Rail over road
- 3 Road over rail



ARTC makes no representation or warranty and assumes no duty of care or other responsibility to any party as to the completeness, accuracy or suitability of the information contained in this GIS map. The GIS map has been prepared from material provided to ARTC by an external source and ARTC has not taken any steps to verify the completeness, accuracy or suitability of that material. ARTC will not be responsible for any loss or damage suffered as a result of any person whatsoever placing reliance upon the information contained within this GIS map.

Disclaimer: The map is provided for information only and is subject to change. The gazetted rail corridor and land requirements are subject to final detailed design.  
 Date: 11/10/2019  
 Author: IR GIS  
 Data Sources: Geoscience Australia, DNRM  
 Paper: A1  
 Scale: 1:70,000

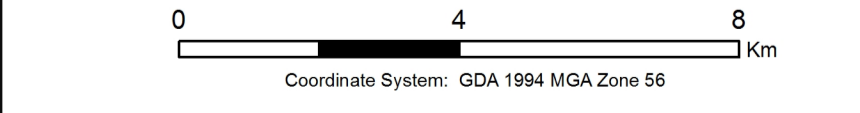
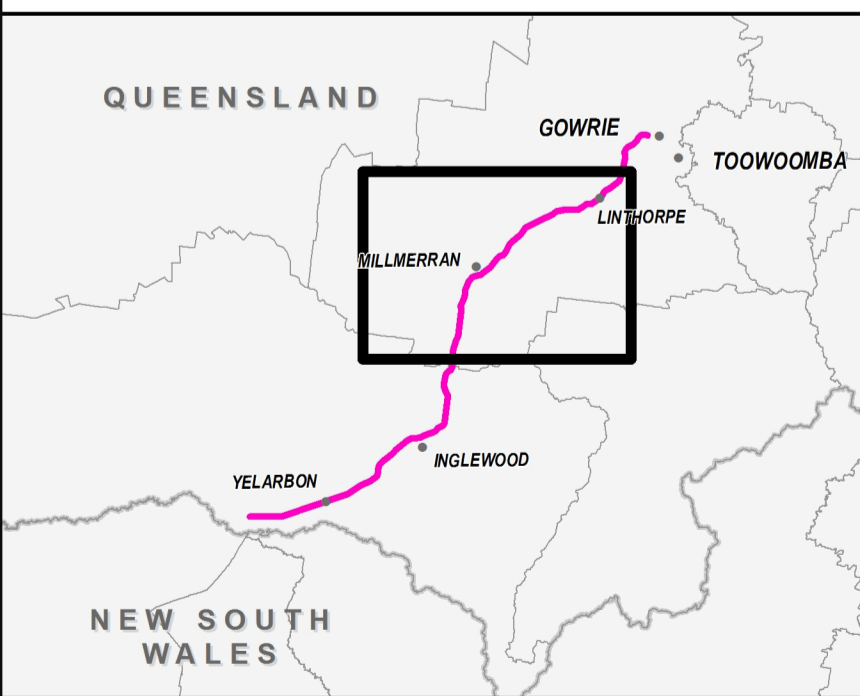


**INLAND RAIL** **ARTC**

The Australian Government is delivering Inland Rail through the Australian Rail Track Corporation (ARTC), in partnership with the private sector.

NSW/QLD  
**Border to Gowrie (B2G)**  
 MAP 2 OF 4

- Alignment centreline
- Project footprint
- Study area
- Populated place
- Major road
- Existing railway
- Major watercourse
- Watercourse area
- Property cadastre
- Locality
- Local government area (LGA)
- Vegetation
- Road/Rail interface
- 1 Level crossing
- 2 Rail over road
- 3 Road over rail

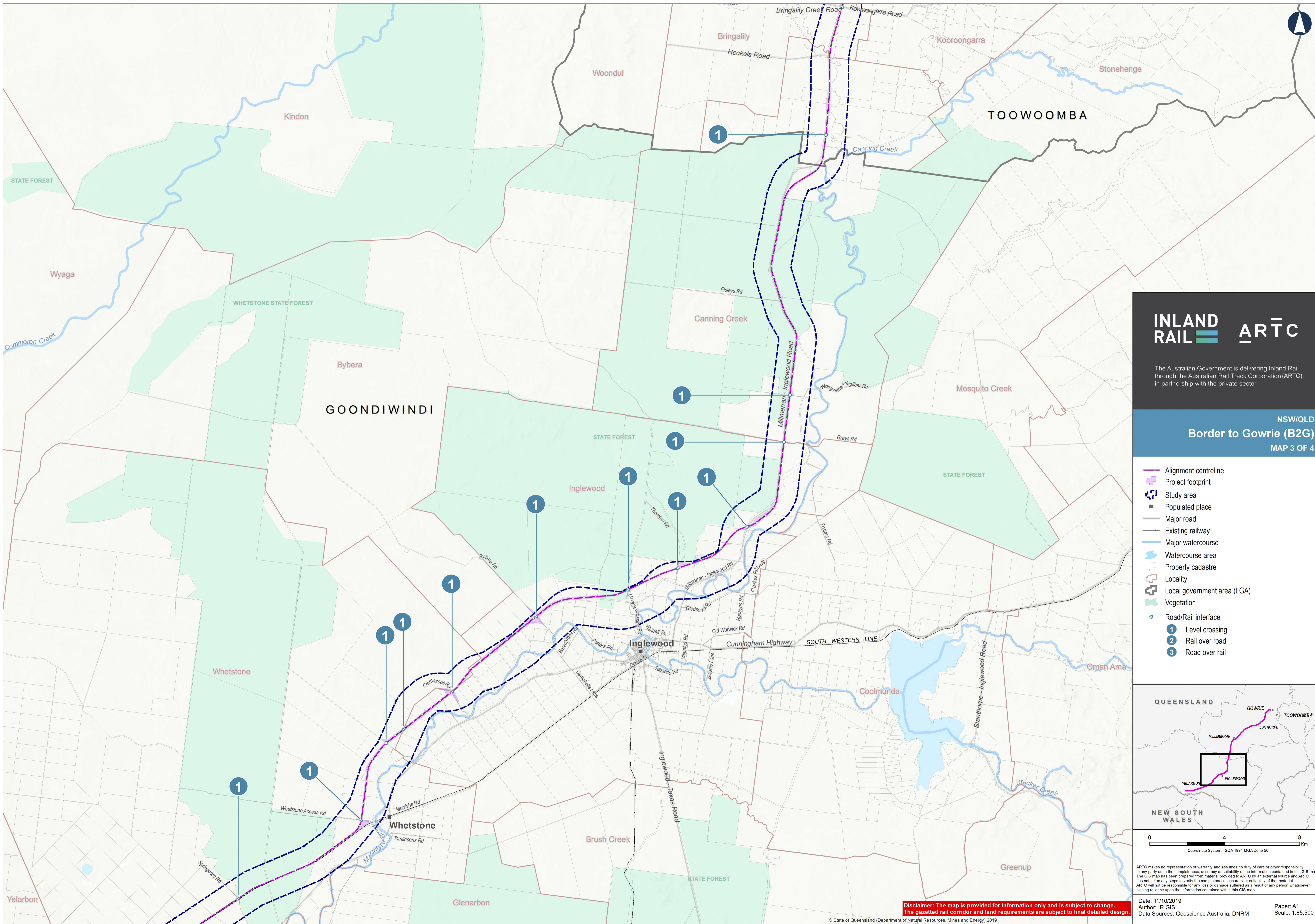


The proposed rail alignment near the Commodore Mine/Millmerran Power Station has shifted marginally outside of the study area. This alignment is within 300 metres of the study area and is wholly within Millmerran Power-owned land. This alignment has less impact to the current and future operations of Commodore Mine.

The alignment has been developed in consultation with Millmerran Power's parent company, and is subject to assessment through the EIS process. The project reference design may change as a result of ongoing investigations, government approvals and detailed design.

**Disclaimer: The map is provided for information only and is subject to change. The gazetted rail corridor and land requirements are subject to final detailed design.**

Date: 29/10/2019  
 Author: IR GIS  
 Data Sources: Geoscience Australia, DNRM  
 Paper: A1  
 Scale: 1:108,000

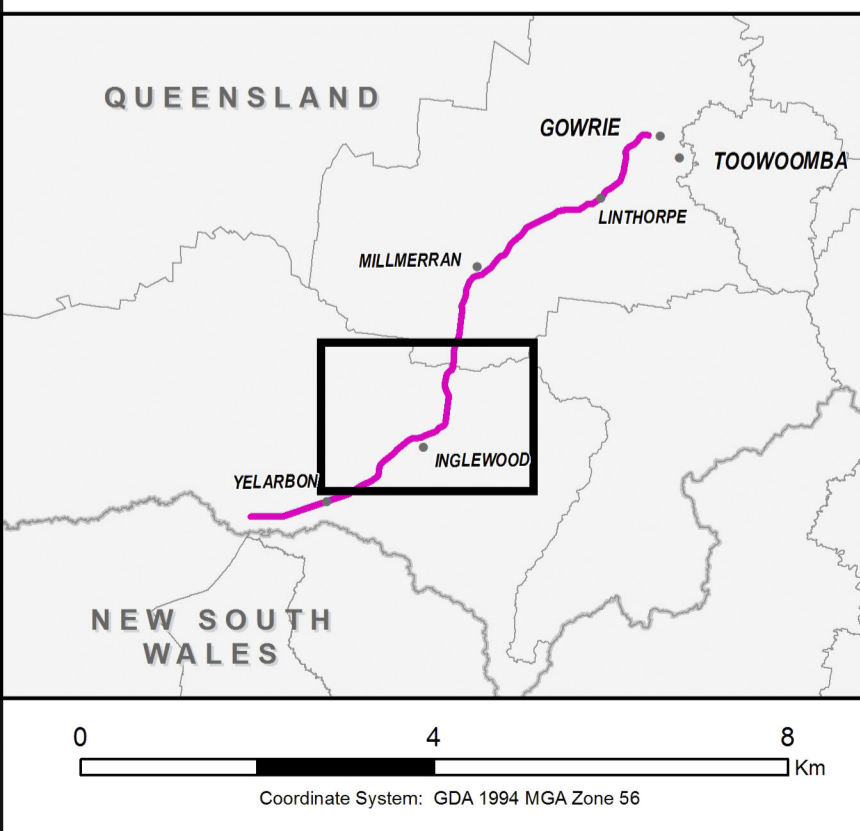


**INLAND RAIL** **ARTC**

The Australian Government is delivering Inland Rail through the Australian Rail Track Corporation (ARTC), in partnership with the private sector.

NSW/QLD  
**Border to Gowrie (B2G)**  
 MAP 3 OF 4

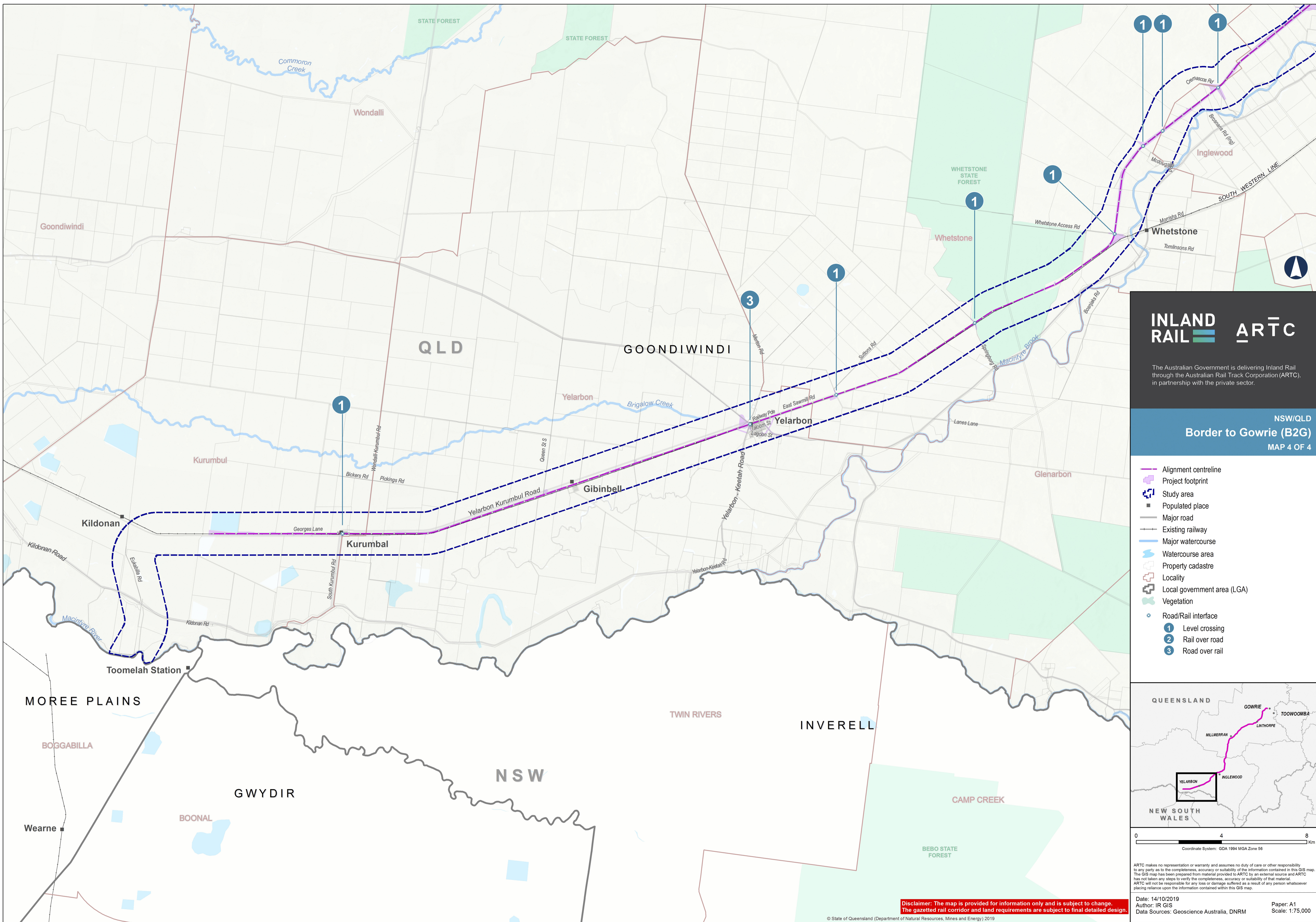
- Alignment centreline
- Project footprint
- Study area
- Populated place
- Major road
- Existing railway
- Major watercourse
- Watercourse area
- Property cadastre
- Locality
- Local government area (LGA)
- Vegetation
- Road/Rail interface
- 1 Level crossing
- 2 Rail over road
- 3 Road over rail



ARTC makes no representation or warranty and assumes no duty of care or other responsibility to any party as to the completeness, accuracy or suitability of the information contained in this GIS map. The GIS map has been prepared from material provided to ARTC by an external source and ARTC has not taken any steps to verify the completeness, accuracy or suitability of that material. ARTC will not be responsible for any loss or damage suffered as a result of any person whatsoever placing reliance upon the information contained within this GIS map.

Date: 11/10/2019  
 Author: IR GIS  
 Data Sources: Geoscience Australia, DNRM  
 Paper: A1  
 Scale: 1:85,500

**Disclaimer: The map is provided for information only and is subject to change. The gazetted rail corridor and land requirements are subject to final detailed design.**

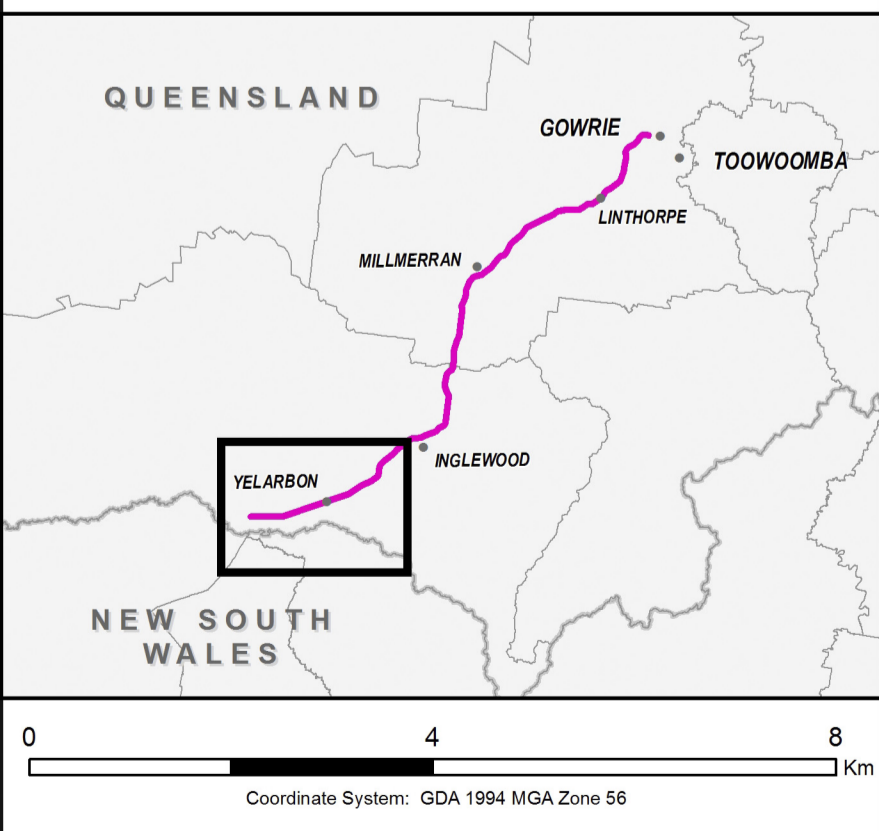


**INLAND RAIL** **ARTC**

The Australian Government is delivering Inland Rail through the Australian Rail Track Corporation (ARTC), in partnership with the private sector.

NSW/QLD  
**Border to Gowrie (B2G)**  
 MAP 4 OF 4

- Alignment centreline
- Project footprint
- Study area
- Populated place
- Major road
- Existing railway
- Major watercourse
- Watercourse area
- Property cadastre
- Locality
- Local government area (LGA)
- Vegetation
- Road/Rail interface
  - 1 Level crossing
  - 2 Rail over road
  - 3 Road over rail



ARTC makes no representation or warranty and assumes no duty of care or other responsibility to any party as to the completeness, accuracy or suitability of the information contained in this GIS map. The GIS map has been prepared from material provided to ARTC by an external source and ARTC has not taken any steps to verify the completeness, accuracy or suitability of that material. ARTC will not be responsible for any loss or damage suffered as a result of any person whatsoever placing reliance upon the information contained within this GIS map.

**Disclaimer: The map is provided for information only and is subject to change. The gazetted rail corridor and land requirements are subject to final detailed design.**

Date: 14/10/2019  
 Author: IR GIS  
 Data Sources: Geoscience Australia, DNRM  
 Paper: A1  
 Scale: 1:75,000