

Appendix A

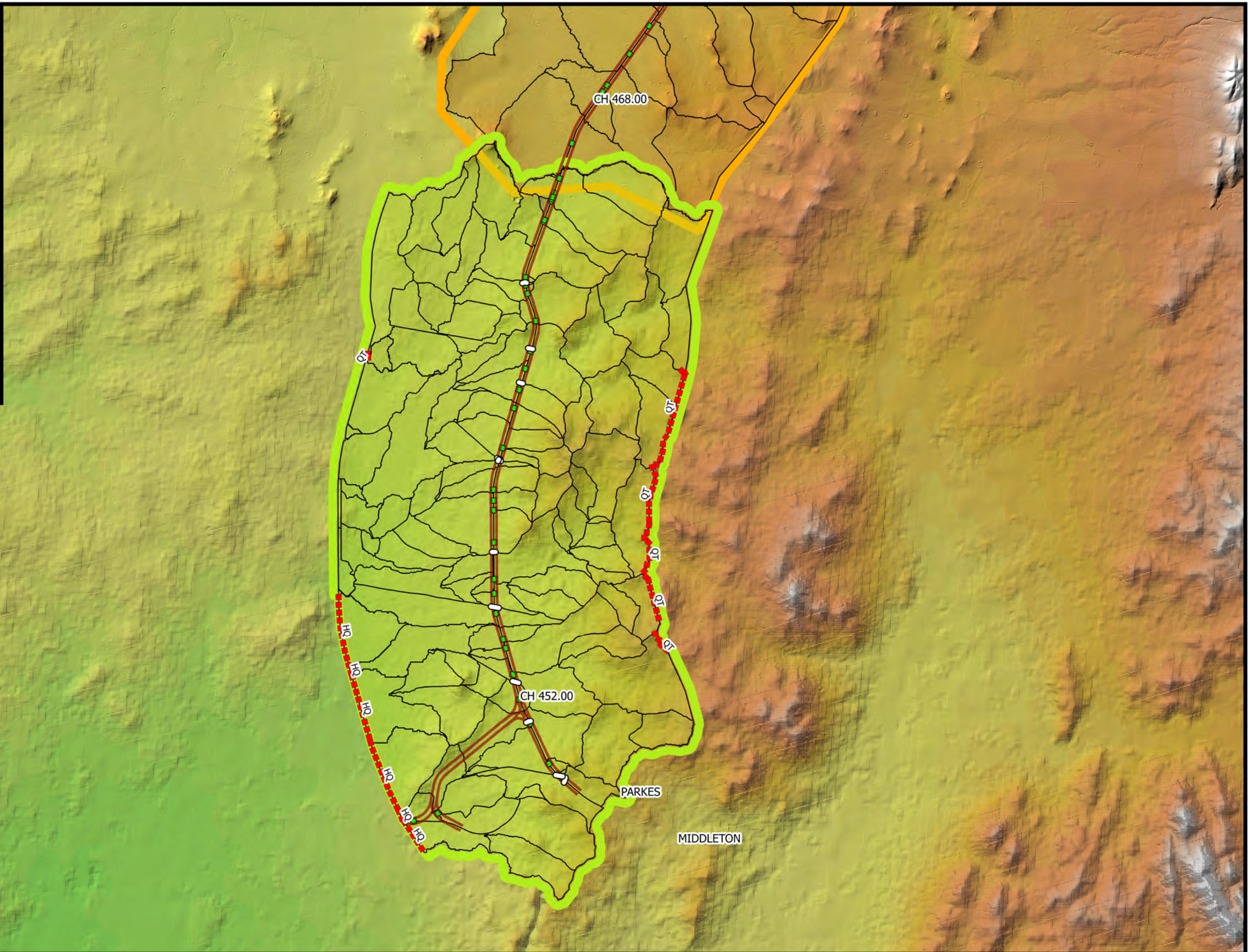
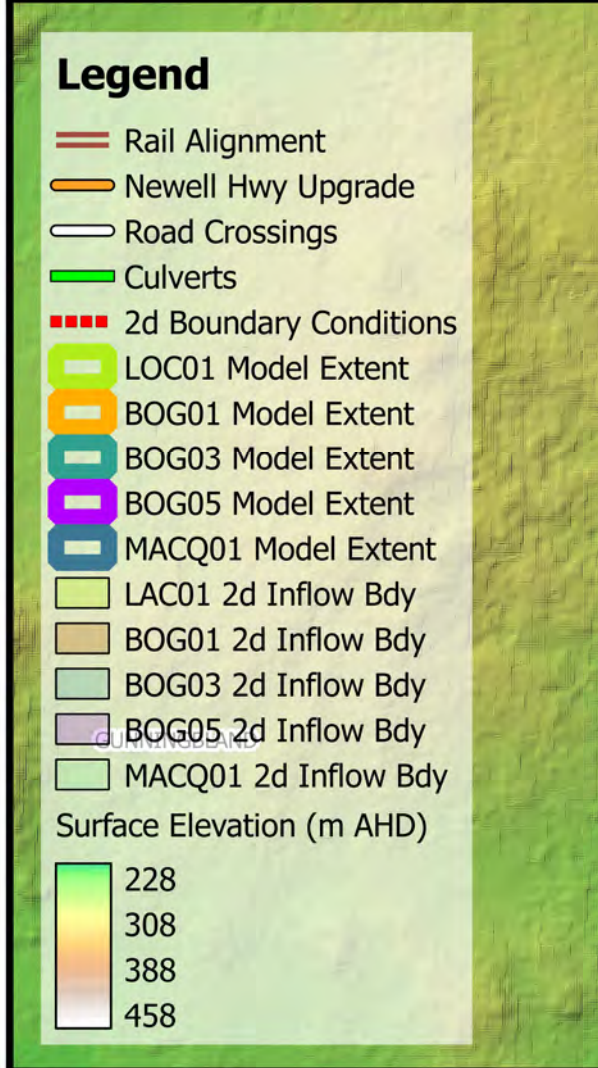
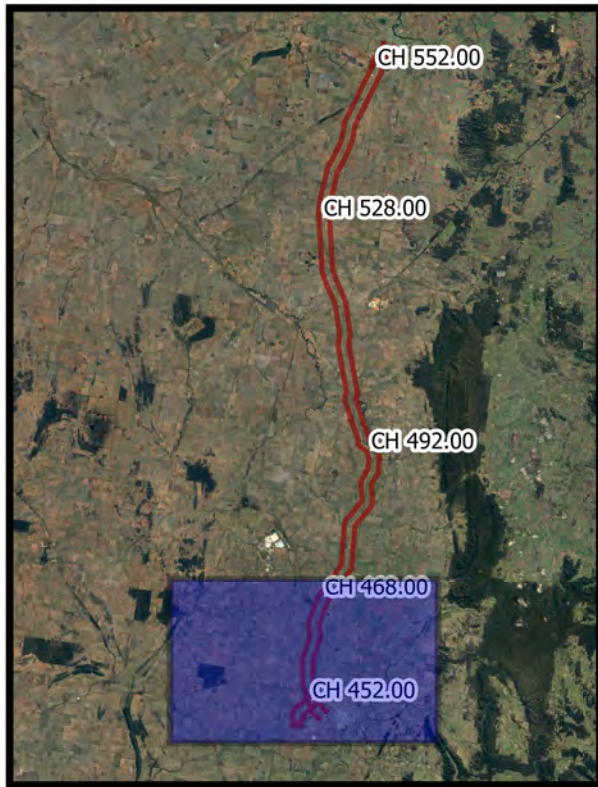
Hydrology/Hydraulics Model Layout and Catchment Maps

A1 –Hydrological Model Layout

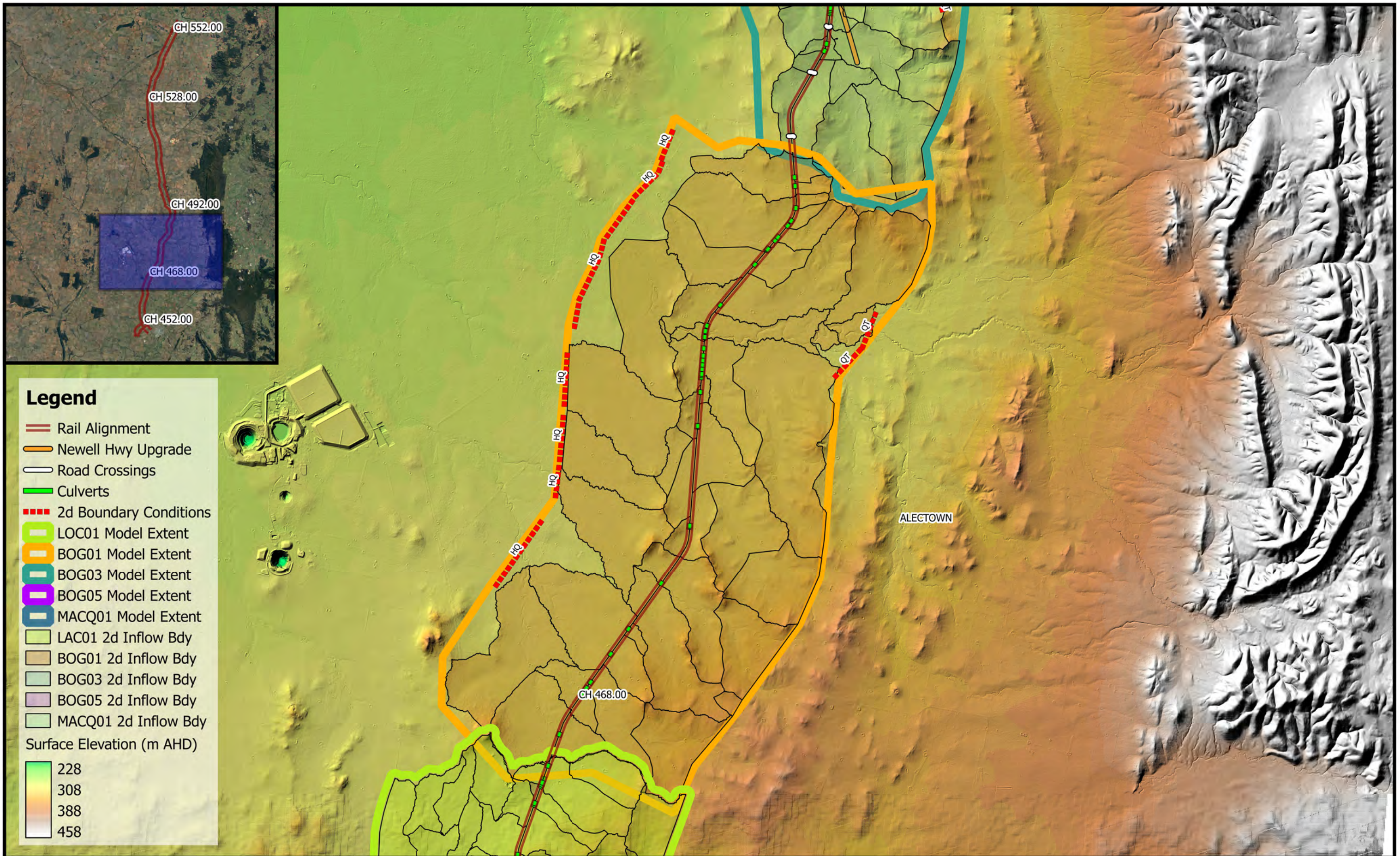
A2 –Hydraulic Model Layout

A3 – Upstream Catchment maps

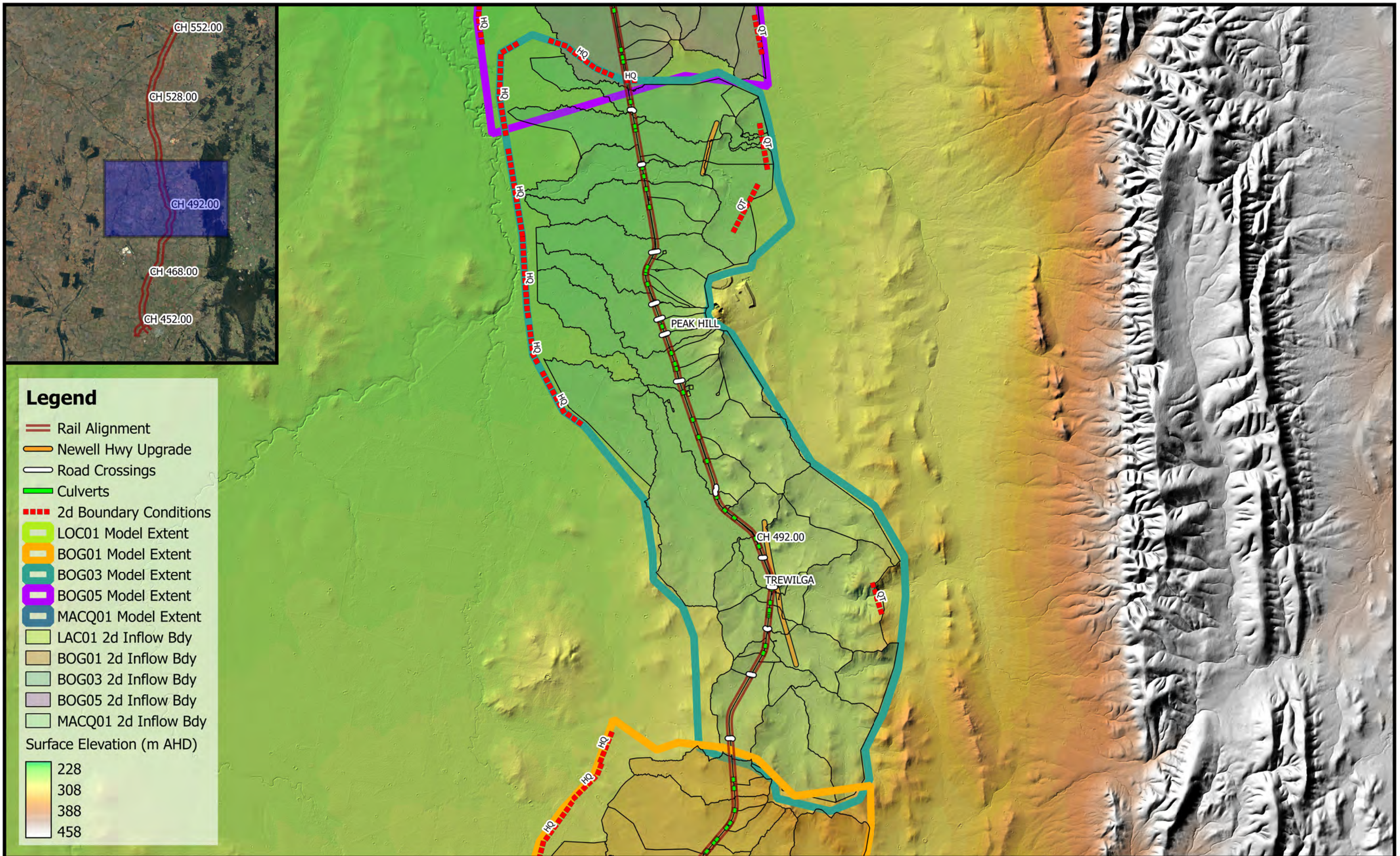




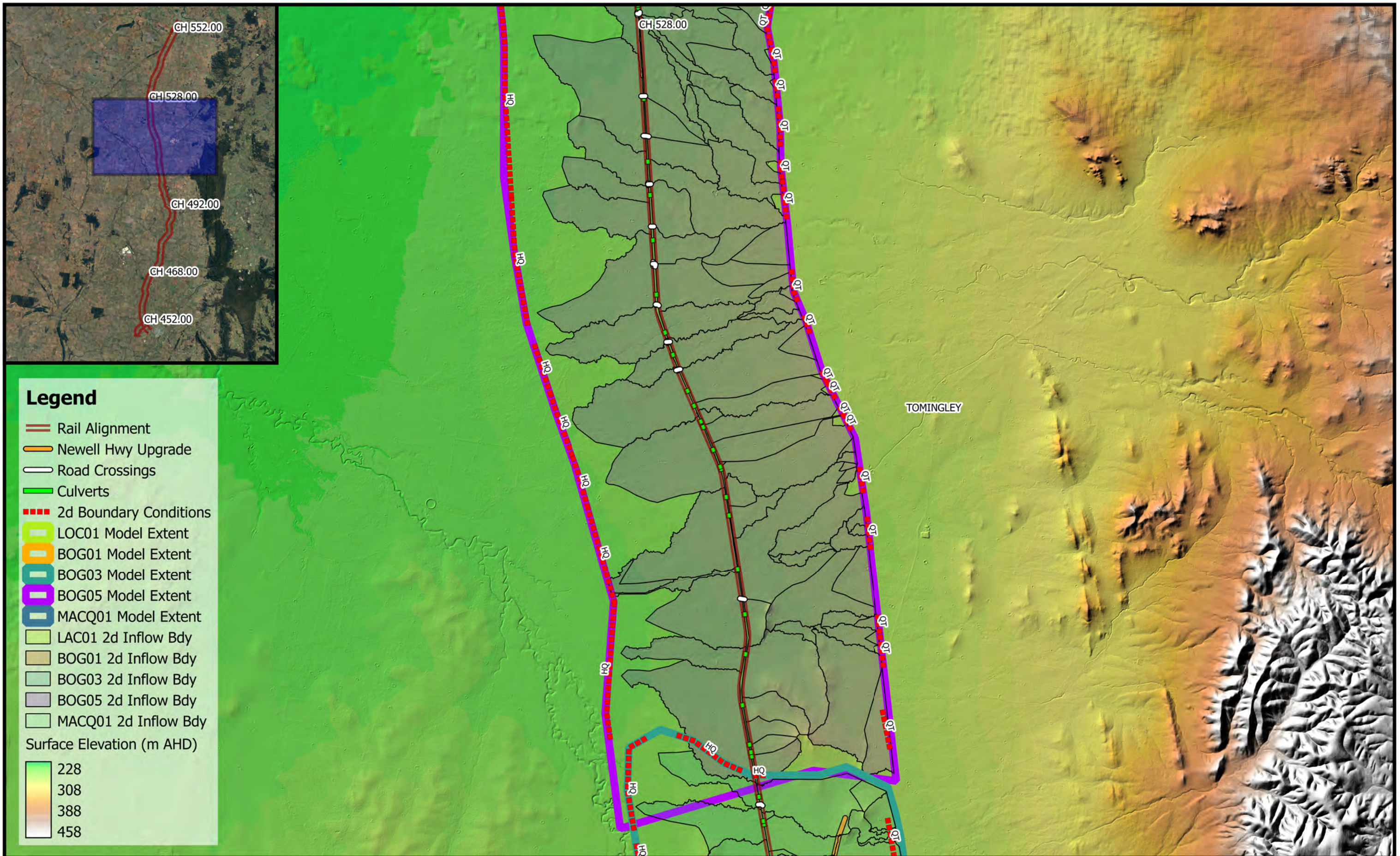
	 1:100,000 Coordinate system: GDA 1994 MGA Zone 55 Scale ratio correct when printed at A3		Date: 5/12/2017	Parkes to Narromine P2 DD30% - Cross Drainage Flood Impact Assessment Figure A201 <i>Tuflow Model Layout - LOC01</i>
			Rev: A	
			Prepared By: DW	



	1000 0 1000 2000 3000 m 1:100,000	 M MOTT MACDONALD	Date: 5/12/2017	Parkes to Narromine P2 DD30% - Cross Drainage Flood Impact Assessment
	Coordinate system: GDA 1994 MGA Zone 55 Scale ratio correct when printed at A3		Rev: A	
			Prepared By: DW	Figure A202 <i>Tuflow Model Layout - BOG01</i>

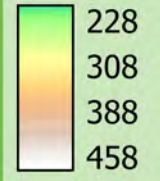


	 1:100,000 Coordinate system: GDA 1994 MGA Zone 55 Scale ratio correct when printed at A3		Date: 5/12/2017	Parkes to Narromine P2 DD30% - Cross Drainage Flood Impact Assessment Figure A203 <i>Tuflow Model Layout - BOG03</i>
			Rev: A	
			Prepared By: DW	



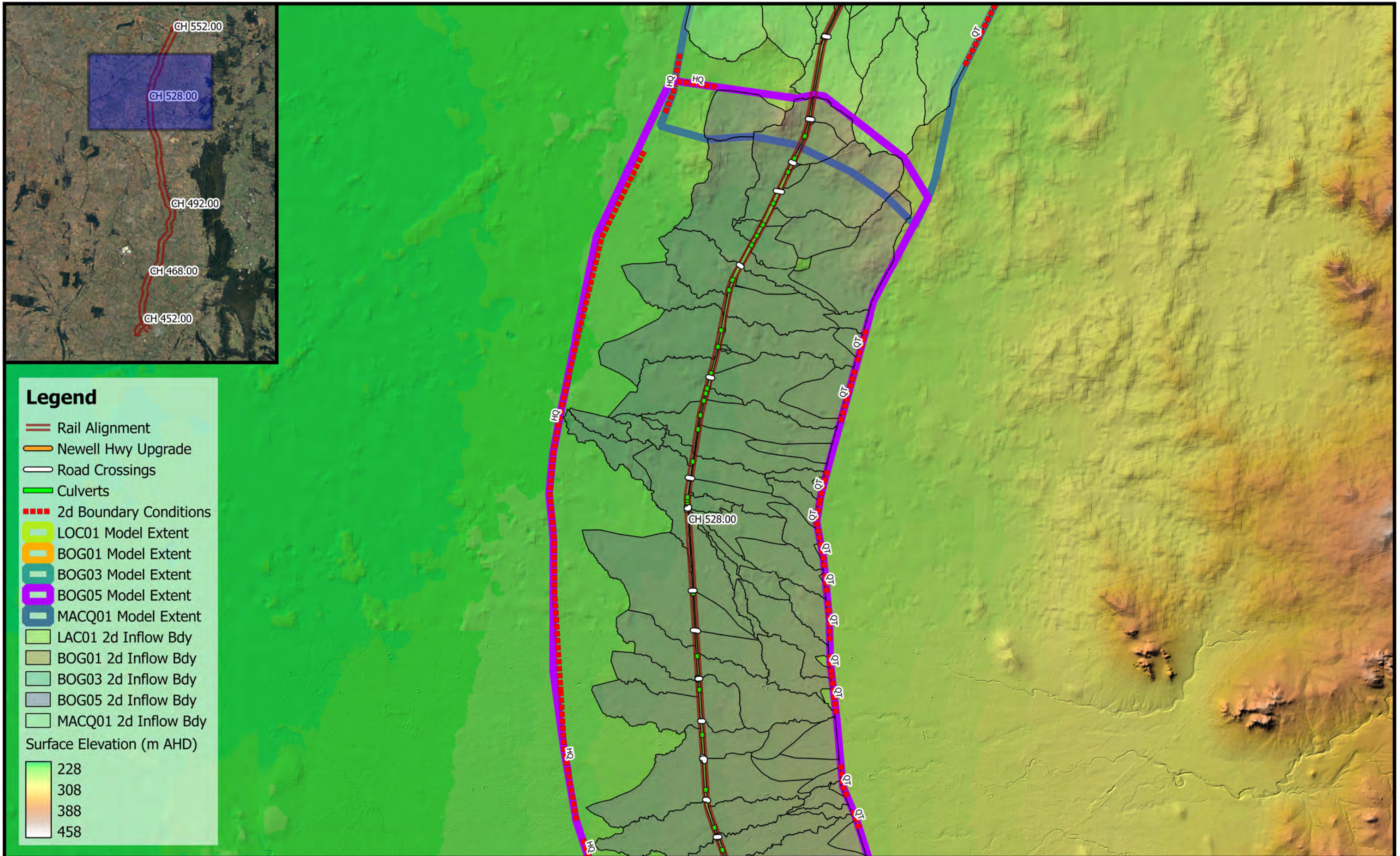
Legend

- Rail Alignment
- Newell Hwy Upgrade
- Road Crossings
- Culverts
- 2d Boundary Conditions
- LOC01 Model Extent
- BOG01 Model Extent
- BOG03 Model Extent
- BOG05 Model Extent
- MACQ01 Model Extent
- LAC01 2d Inflow Bdy
- BOG01 2d Inflow Bdy
- BOG03 2d Inflow Bdy
- BOG05 2d Inflow Bdy
- MACQ01 2d Inflow Bdy



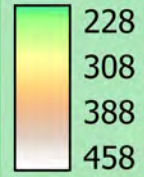
	 1:100,000	 M MOTT MACDONALD	Date: 5/12/2017	Parkes to Narromine P2 DD30% - Cross Drainage Flood Impact Assessment Figure A204 <i>Tuflow Model Layout - BOG05 (1 of 2)</i>
	Coordinate system: GDA 1994 MGA Zone 55 Scale ratio correct when printed at A3		Rev: A	
			Prepared By: DW	

\\apsydlk3\PROJ\1\RDJW\2135661_Parkes_to_Narromine_P2\05_WrkPapers\Flooding_and_Drainage\02_QGIS\02_Design\Hydraulics\04_FullSite\02_Flood_Report\01_30%_Design\TUFLOWModelOverviewMap.qgs - 2.18.9

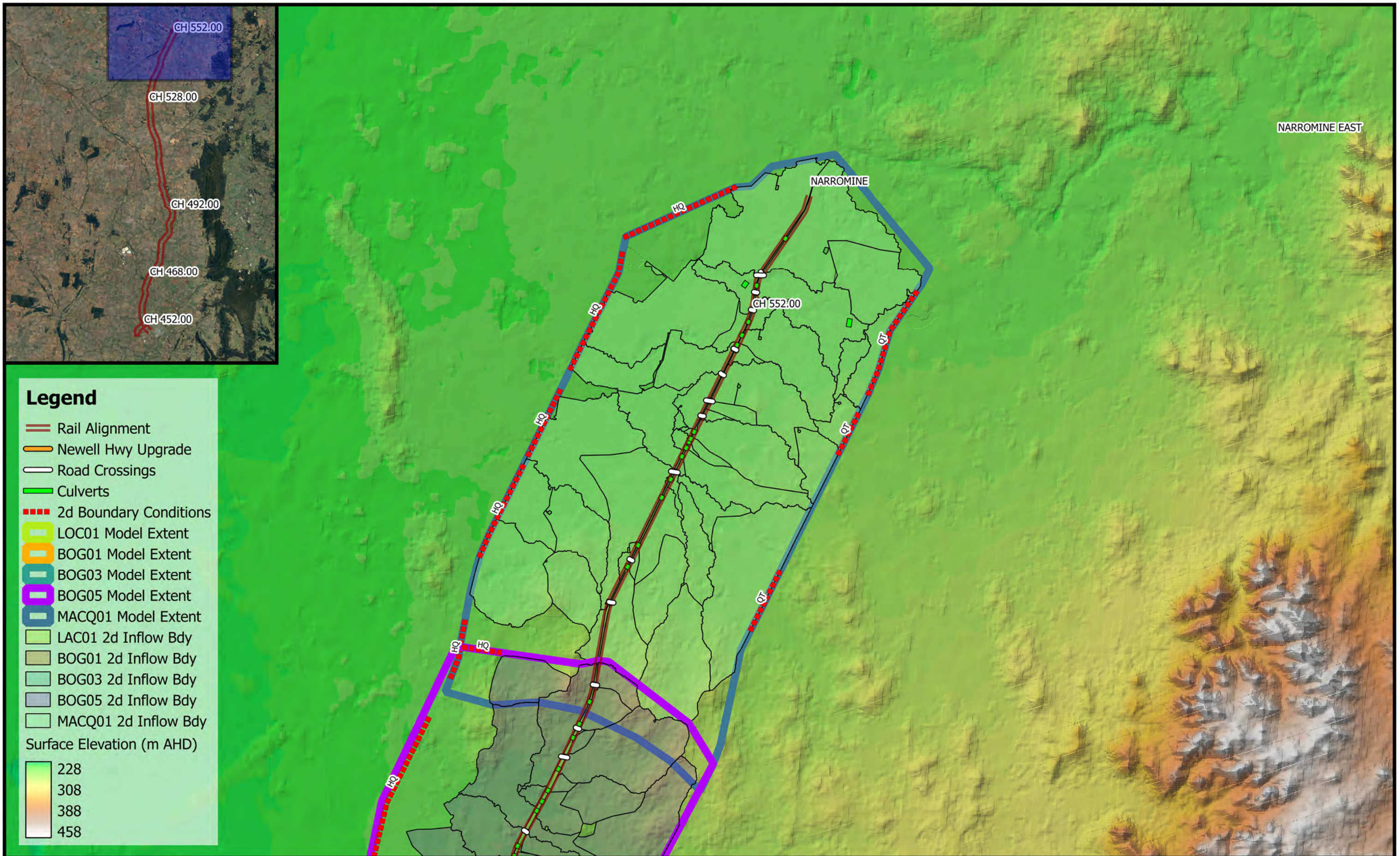


Legend

- Rail Alignment
- Newell Hwy Upgrade
- Road Crossings
- Culverts
- 2d Boundary Conditions
- LOC01 Model Extent
- BOG01 Model Extent
- BOG03 Model Extent
- BOG05 Model Extent
- MACQ01 Model Extent
- LAC01 2d Inflow Bdy
- BOG01 2d Inflow Bdy
- BOG03 2d Inflow Bdy
- BOG05 2d Inflow Bdy
- MACQ01 2d Inflow Bdy

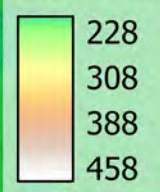


	 1:100,000	 M MOTT MACDONALD	Date: 5/12/2017	Parkes to Narromine P2 DD30% - Cross Drainage Flood Impact Assessment Figure A205 <i>Tuflow Model Layout - BOG05 (2 of 2)</i>
	Coordinate system: GDA 1994 MGA Zone 55 Scale ratio correct when printed at A3		Rev: A	
			Prepared By: DW	



Legend

- Rail Alignment
- Newell Hwy Upgrade
- Road Crossings
- Culverts
- 2d Boundary Conditions
- LOC01 Model Extent
- BOG01 Model Extent
- BOG03 Model Extent
- BOG05 Model Extent
- MACQ01 Model Extent
- LAC01 2d Inflow Bdy
- BOG01 2d Inflow Bdy
- BOG03 2d Inflow Bdy
- BOG05 2d Inflow Bdy
- MACQ01 2d Inflow Bdy



	 1:100,000	 	Date: 5/12/2017	Parkes to Narromine P2 DD30% - Cross Drainage Flood Impact Assessment Figure A206 <i>Tuflow Model Layout - MAC01</i>
	Coordinate system: GDA 1994 MGA Zone 55 Scale ratio correct when printed at A3		Rev: A	
	Prepared By: DW			