

Appendix C

Design Conditions Flood Maps

C1 – Flood Level Change (Afflux) 39% AEP

C2 – Flood Level Change (Afflux) 10% AEP

C3 – Flood Level Change (Afflux) 1% AEP

C4 – Flood Level Change (Afflux) 1% AEP with climate change

C5 – Flood Velocity Change 39% AEP

C6 – Flood Velocity Change 10% AEP

C7 – Flood Velocity Change 1% AEP

C8 – Flood Velocity Change 1% AEP with climate change

C9 – Flood Duration Change 39% AEP

C10 – Flood Duration Change 10% AEP

C11 – Flood Duration Change 1% AEP



C12 – Flood Duration Change 1% AEP with climate change






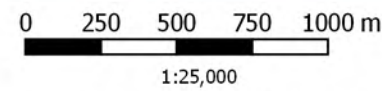

	<p>0 250 500 750 1000 m</p> <p>1:25,000</p> <p>Coordinate system: GDA 1994 MGA Zone 55 Inset Aerial Source: NSW Six Map Scale ratio correct when printed at A3</p>		Date: 15/10/2018	<p>Inland Rail - Parkes to Narromine IFC - Cross Drainage Flood Impact Assessment Results</p> <p>Figure DE1CCDC1 1% AEP CC Percentage Change In Duration For Flood Depths > 200mm - CH 450.00</p>
			<p>Rev: A - For Information Only</p> <p>Prepared By: YeohM</p>	

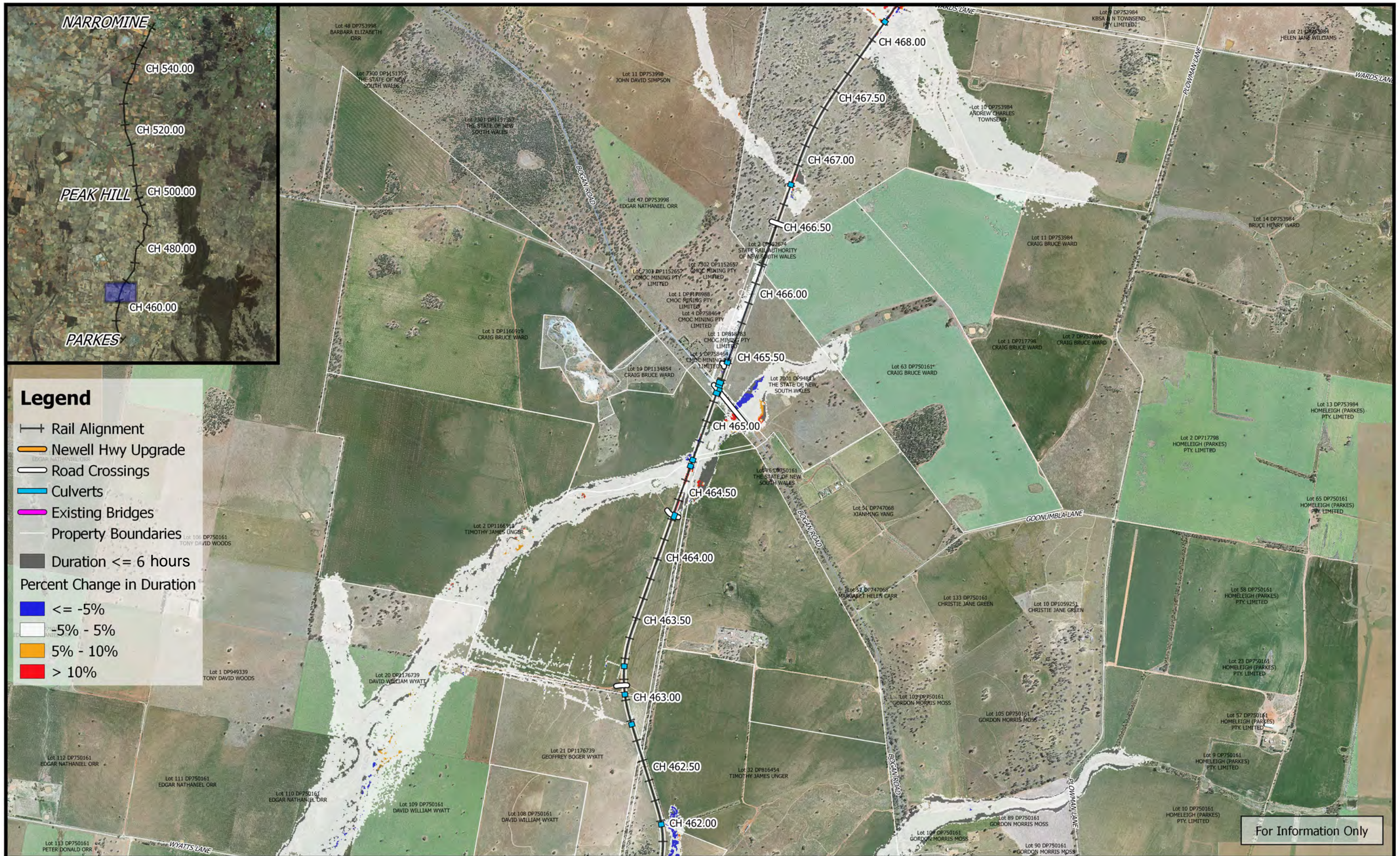


	<p>0 250 500 750 1000 m</p> <p>1:25,000</p> <p>Coordinate system: GDA 1994 MGA Zone 55 Inset Aerial Source: NSW Six Map Scale ratio correct when printed at A3</p>		<p>Date: 15/10/2018</p> <p>Rev: A - For Information Only</p> <p>Prepared By: YeohM</p>	<p style="text-align: center;">Inland Rail - Parkes to Narromine</p> <p style="text-align: center;">IFC - Cross Drainage Flood Impact Assessment Results</p> <p style="text-align: right;">Figure DE1CCDC2</p> <p style="text-align: center;">1% AEP CC Percentage Change In Duration For Flood Depths > 200mm - CH 455.00</p>
	<p>For Information Only</p>			



For Information Only

			Date: 15/10/2018	Inland Rail - Parkes to Narromine IFC - Cross Drainage Flood Impact Assessment Results
			Rev: A - For Information Only	
			Prepared By: YeohM	



For Information Only

	<p>Coordinate system: GDA 1994 MGA Zone 55 Inset Aerial Source: NSW Six Map Scale ratio correct when printed at A3</p>		Date: 15/10/2018	<p align="center">Inland Rail - Parkes to Narromine IFC - Cross Drainage Flood Impact Assessment Results</p> <p align="right">Figure DE1CCDC4</p> <p align="center">1% AEP CC Percentage Change In Duration For Flood Depths > 200mm - CH 465.00</p>
			Rev: A - For Information Only	
			Prepared By: YeohM	



Legend

- +— Rail Alignment
- Newell Hwy Upgrade
- Road Crossings
- Culverts
- Existing Bridges
- Property Boundaries
- Duration <= 6 hours

Percent Change in Duration



- <= -5%
- -5% - 5%
- 5% - 10%
- > 10%

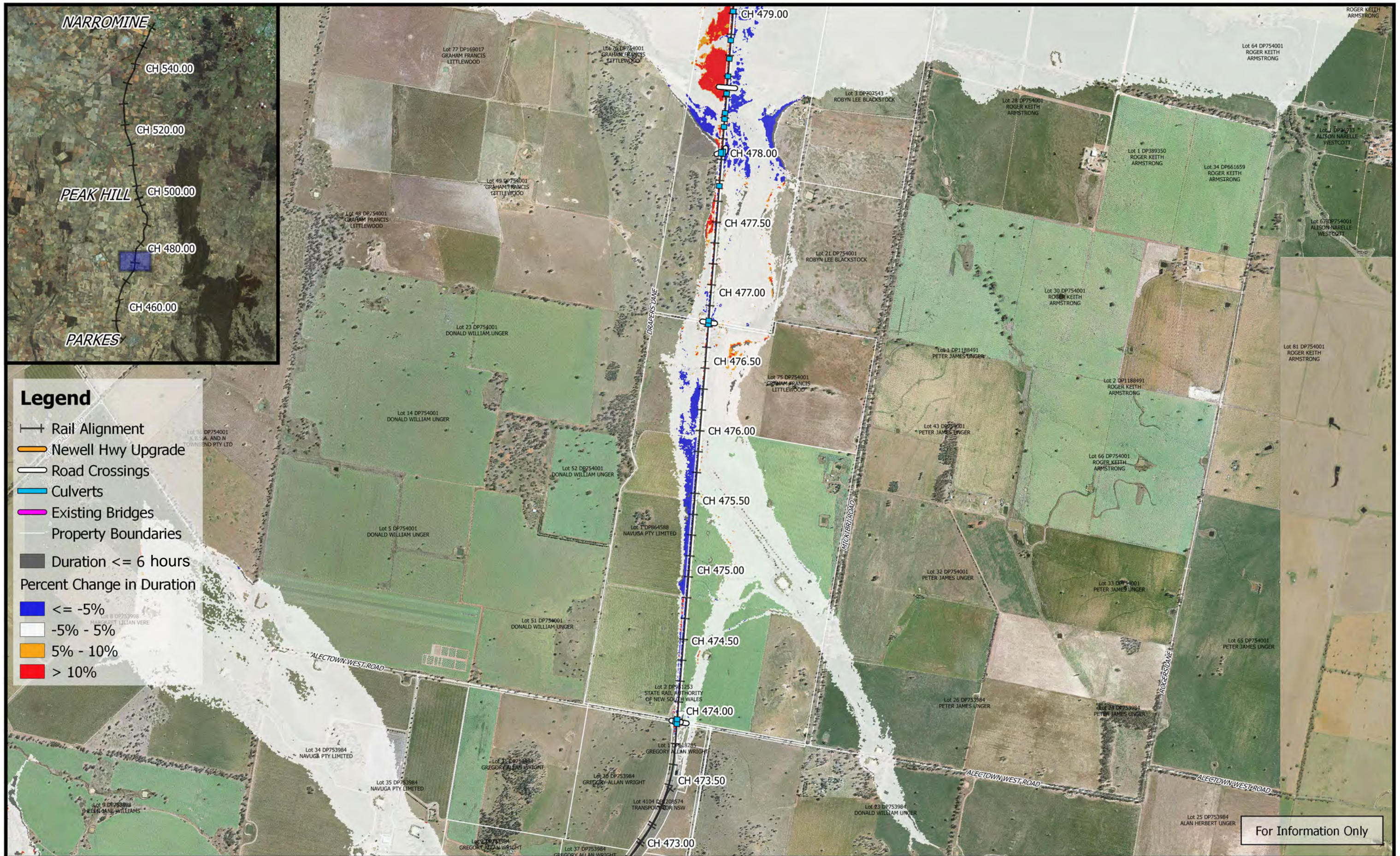
For Information Only

	<p>1:25,000</p>		Date: 15/10/2018	Inland Rail - Parkes to Narromine IFC - Cross Drainage Flood Impact Assessment Results
	Coordinate system: GDA 1994 MGA Zone 55 Inset Aerial Source: NSW Six Map Scale ratio correct when printed at A3		Rev: A - For Information Only	Prepared By: YeohM


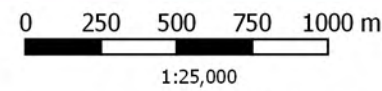



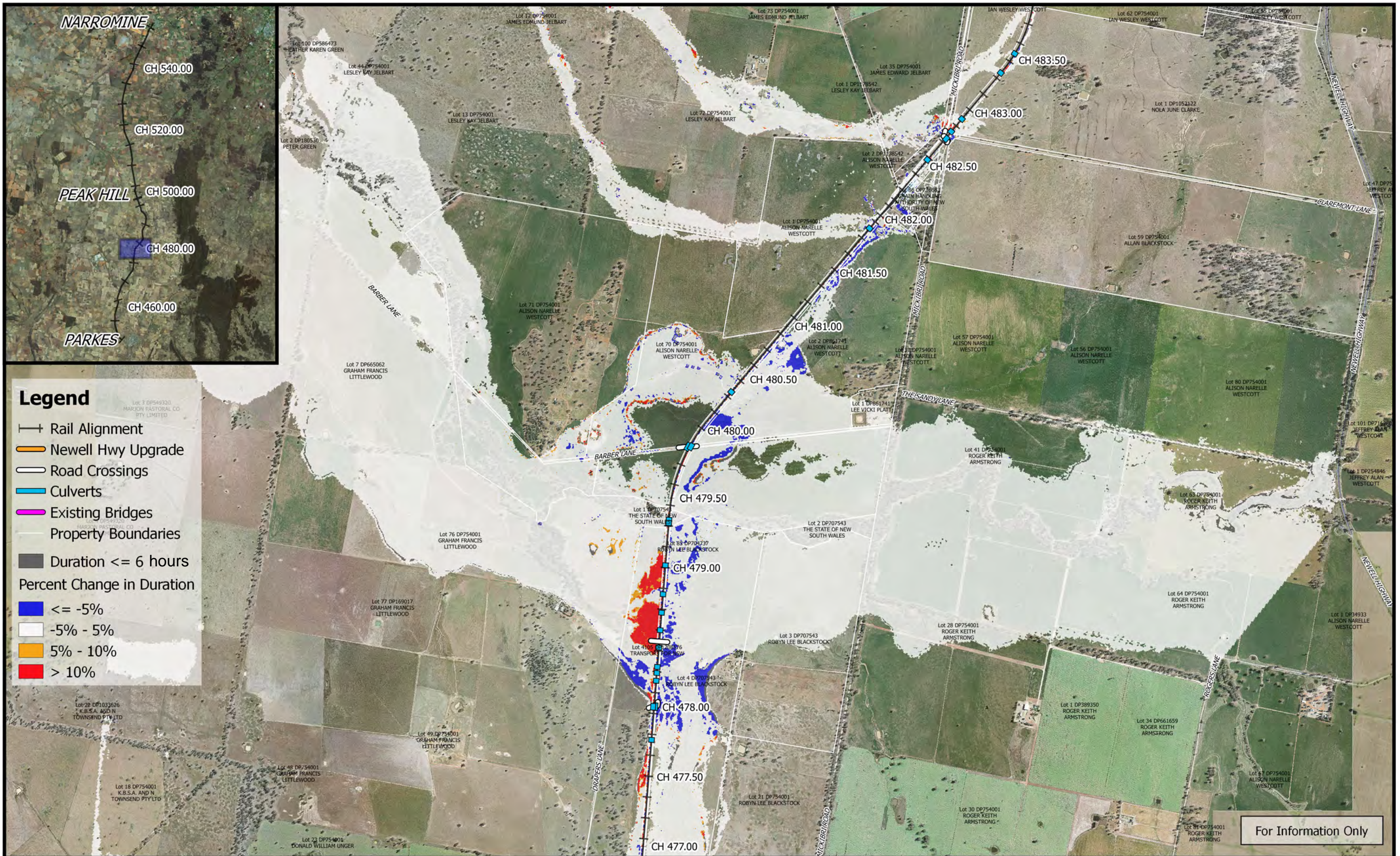
For Information Only

	<p>0 250 500 750 1000 m</p> <p>1:25,000</p> <p>Coordinate system: GDA 1994 MGA Zone 55 Inset Aerial Source: NSW Six Map Scale ratio correct when printed at A3</p>		Date: 15/10/2018	<p>Inland Rail - Parkes to Narromine IFC - Cross Drainage Flood Impact Assessment Results</p>
	<p>Rev: A - For Information Only</p>		<p>Figure DE1CCDC6</p>	
	<p>Prepared By: YeohM</p>		<p>1% AEP CC Percentage Change In Duration For Flood Depths > 200mm - CH 472.00</p>	



For Information Only

	 <p>Coordinate system: GDA 1994 MGA Zone 55 Inset Aerial Source: NSW Six Map Scale ratio correct when printed at A3</p>		Date: 15/10/2018	Inland Rail - Parkes to Narromine IFC - Cross Drainage Flood Impact Assessment Results
			Rev: A - For Information Only	
			Prepared By: YeohM	



Legend

- Rail Alignment
- Newell Hwy Upgrade
- Road Crossings
- Culverts
- Existing Bridges
- Property Boundaries
- Duration <= 6 hours
- Percent Change in Duration**
- <= -5%
- 5% - 5%
- 5% - 10%
- > 10%

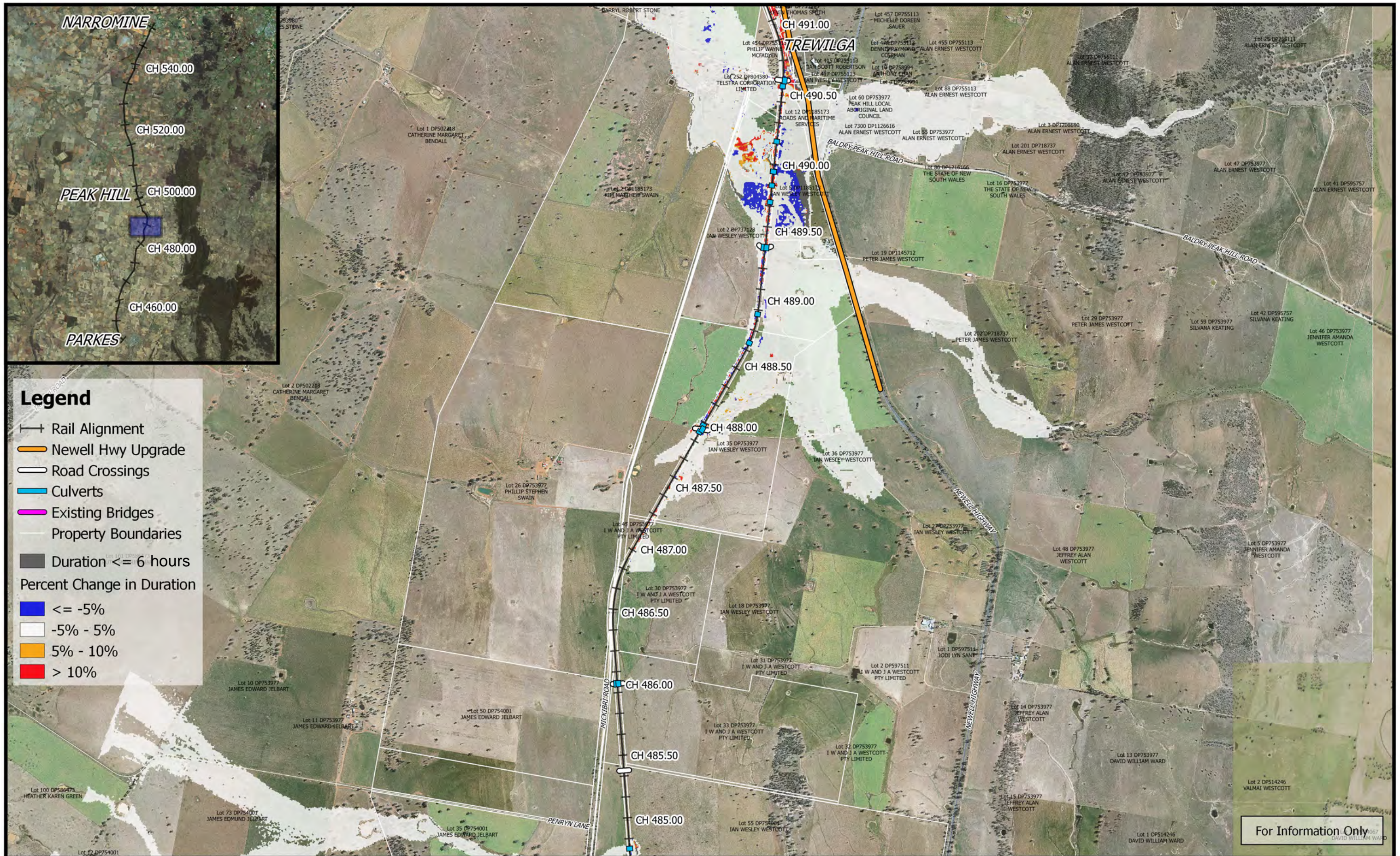
For Information Only

	 1:25,000	 	Date: 15/10/2018 Rev: A - For Information Only Prepared By: YeohM	Inland Rail - Parkes to Narromine IFC - Cross Drainage Flood Impact Assessment Results Figure DE1CCDC8 1% AEP CC Percentage Change In Duration For Flood Depths > 200mm - CH 480.00	
	Coordinate system: GDA 1994 MGA Zone 55 Inset Aerial Source: NSW Six Map Scale ratio correct when printed at A3				
	<small>E:\12dsynergy\2\IR_P2N_1\01 WIP\Flooding and Drainage\GIS Mapping\Individual Property Maps\Mapping_Full_Project.gis - 2.18.21</small>				



For Information Only

			Date: 15/10/2018	Inland Rail - Parkes to Narromine IFC - Cross Drainage Flood Impact Assessment Results
			Rev: A - For Information Only	
Coordinate system: GDA 1994 MGA Zone 55 Inset Aerial Source: NSW Six Map Scale ratio correct when printed at A3			Prepared By: YeohM	



Legend

- Rail Alignment
- Newell Hwy Upgrade
- Road Crossings
- Culverts
- Existing Bridges
- Property Boundaries
- Duration <= 6 hours
- Percent Change in Duration**
- <= -5%
- 5% - 5%
- 5% - 10%
- > 10%

For Information Only

	<p>1:25,000</p>		Date: 15/10/2018	<p>Inland Rail - Parkes to Narromine IFC - Cross Drainage Flood Impact Assessment Results</p> <p>Figure DE1CCDC10 1% AEP CC Percentage Change In Duration For Flood Depths > 200mm - CH 490.00</p>
	Coordinate system: GDA 1994 MGA Zone 55 Inset Aerial Source: NSW Six Map Scale ratio correct when printed at A3		Rev: A - For Information Only	

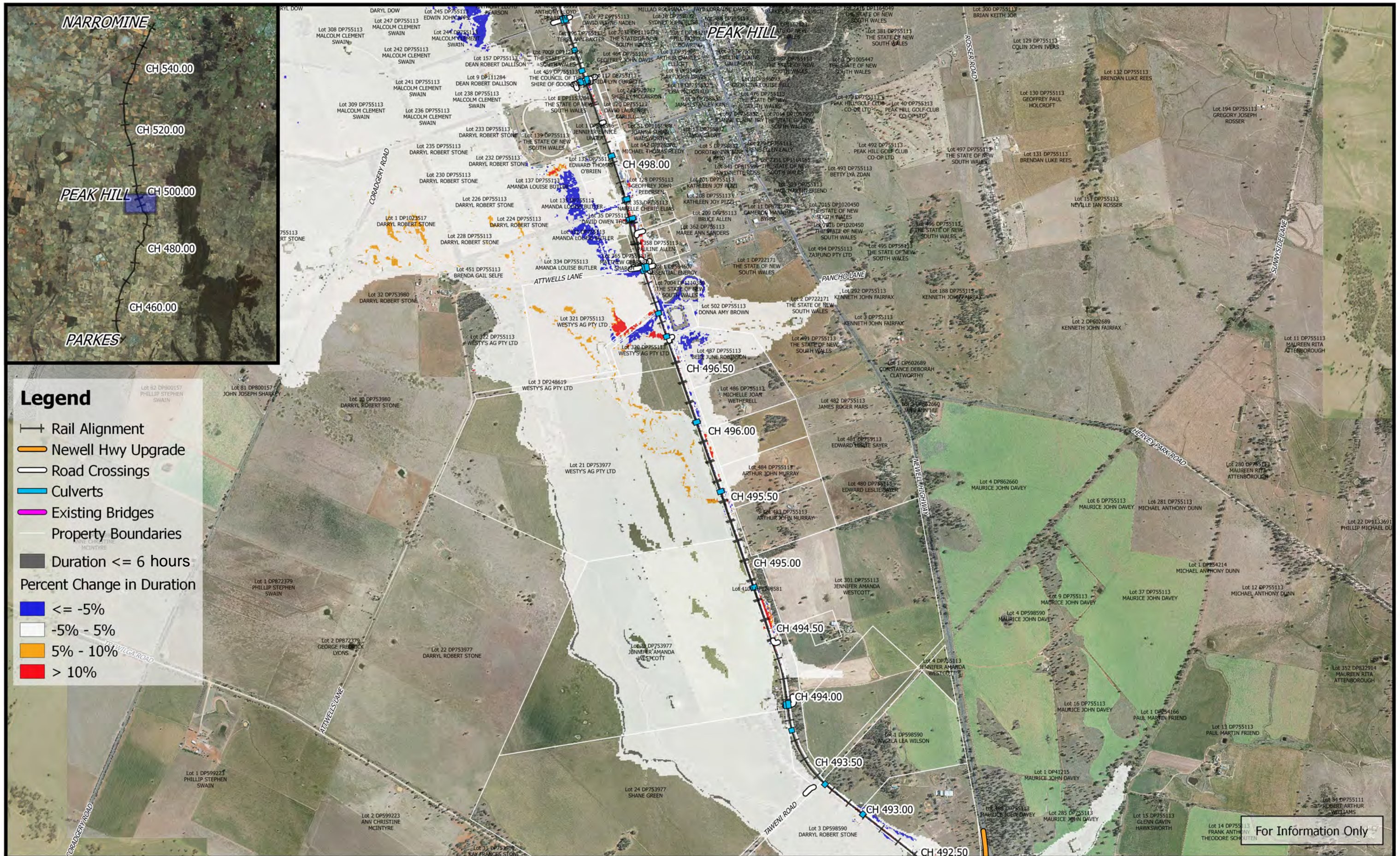


Legend

- Rail Alignment
- Newell Hwy Upgrade
- Road Crossings
- Culverts
- Existing Bridges
- Property Boundaries
- Duration <= 6 hours
- Percent Change in Duration**
- <= -5%
- 5% - 5%
- 5% - 10%
- > 10%

For Information Only

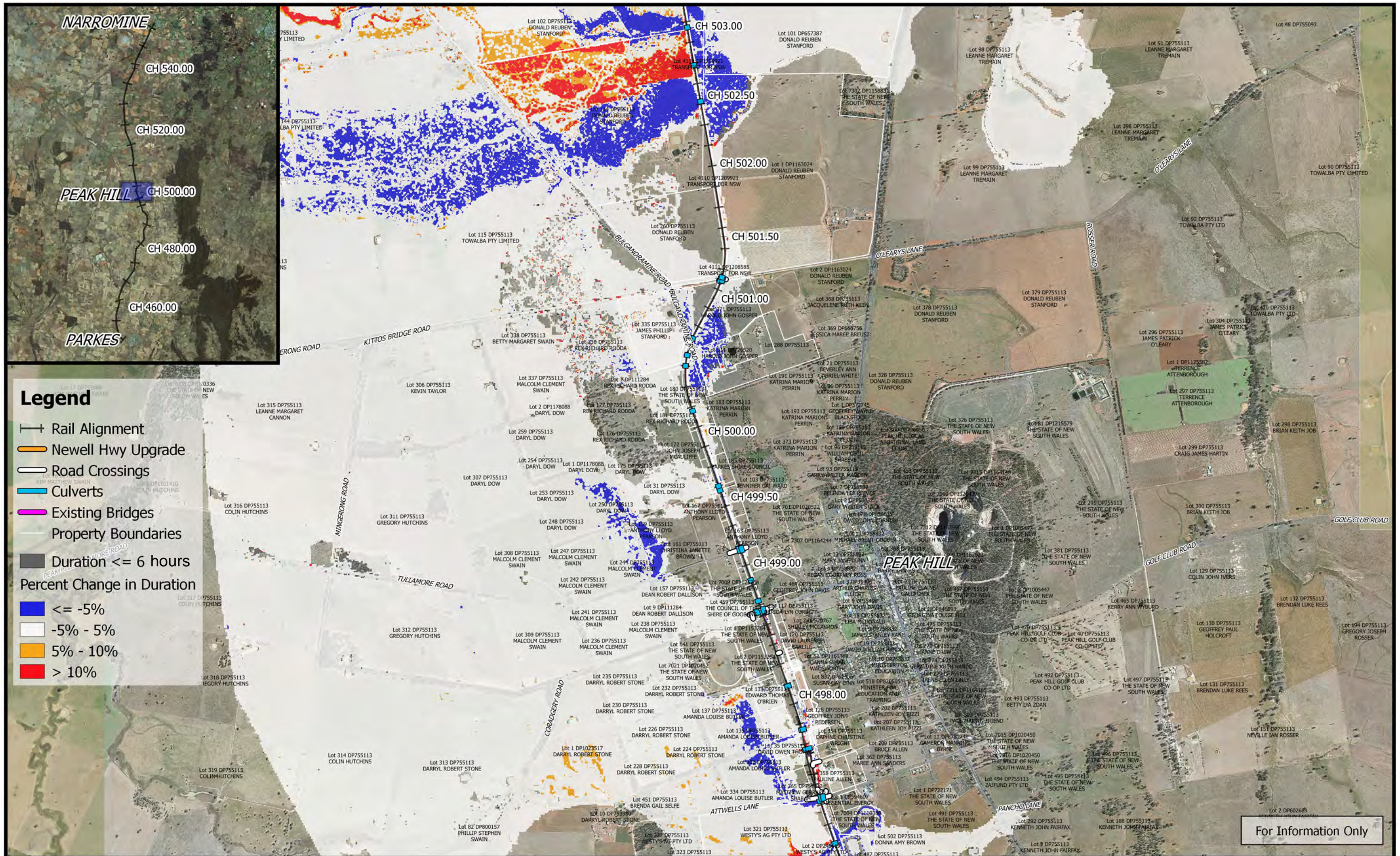
	 1:25,000	 M M MOTT MACDONALD	Date: 15/10/2018	Inland Rail - Parkes to Narromine IFC - Cross Drainage Flood Impact Assessment Results Figure DE1CCDC11 1% AEP CC Percentage Change In Duration For Flood Depths > 200mm - CH 492.00
	Coordinate system: GDA 1994 MGA Zone 55 Inset Aerial Source: NSW Six Map Scale ratio correct when printed at A3		Rev: A - For Information Only	



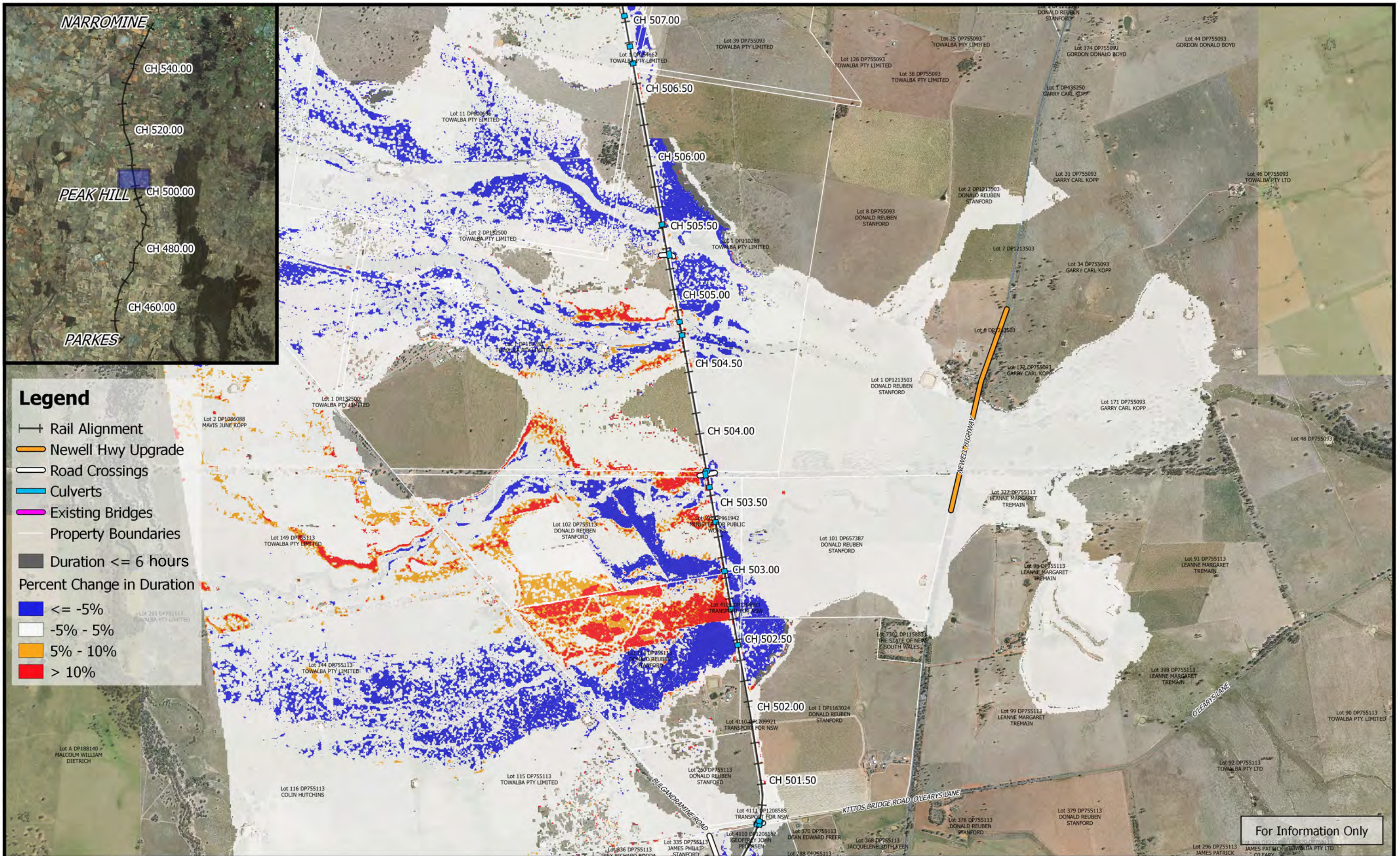
For Information Only

			Date: 15/10/2018	Inland Rail - Parkes to Narromine IFC - Cross Drainage Flood Impact Assessment Results
			Rev: A - For Information Only	
Coordinate system: GDA 1994 MGA Zone 55 Inset Aerial Source: NSW Six Map Scale ratio correct when printed at A3			Prepared By: YeohM	

E:\12d\Synergy\2\IR_P2N_1\01 WIP\Flooding and Drainage\GIS Mapping\Individual Property Maps\Mapping_Full_Project.gvs - 2.18.21



	 1:25,000		Date: 15/10/2018	Inland Rail - Parkes to Narromine IFC - Cross Drainage Flood Impact Assessment Results Figure DE1CCDC13 1% AEP CC Percentage Change In Duration For Flood Depths > 200mm - CH 500.00
	Coordinate system: GDA 1994 MGA Zone 55 Inset Aerial Source: NSW Six Map Scale ratio correct when printed at A3		Rev: A - For Information Only	
	Prepared By: YeohM			



Legend

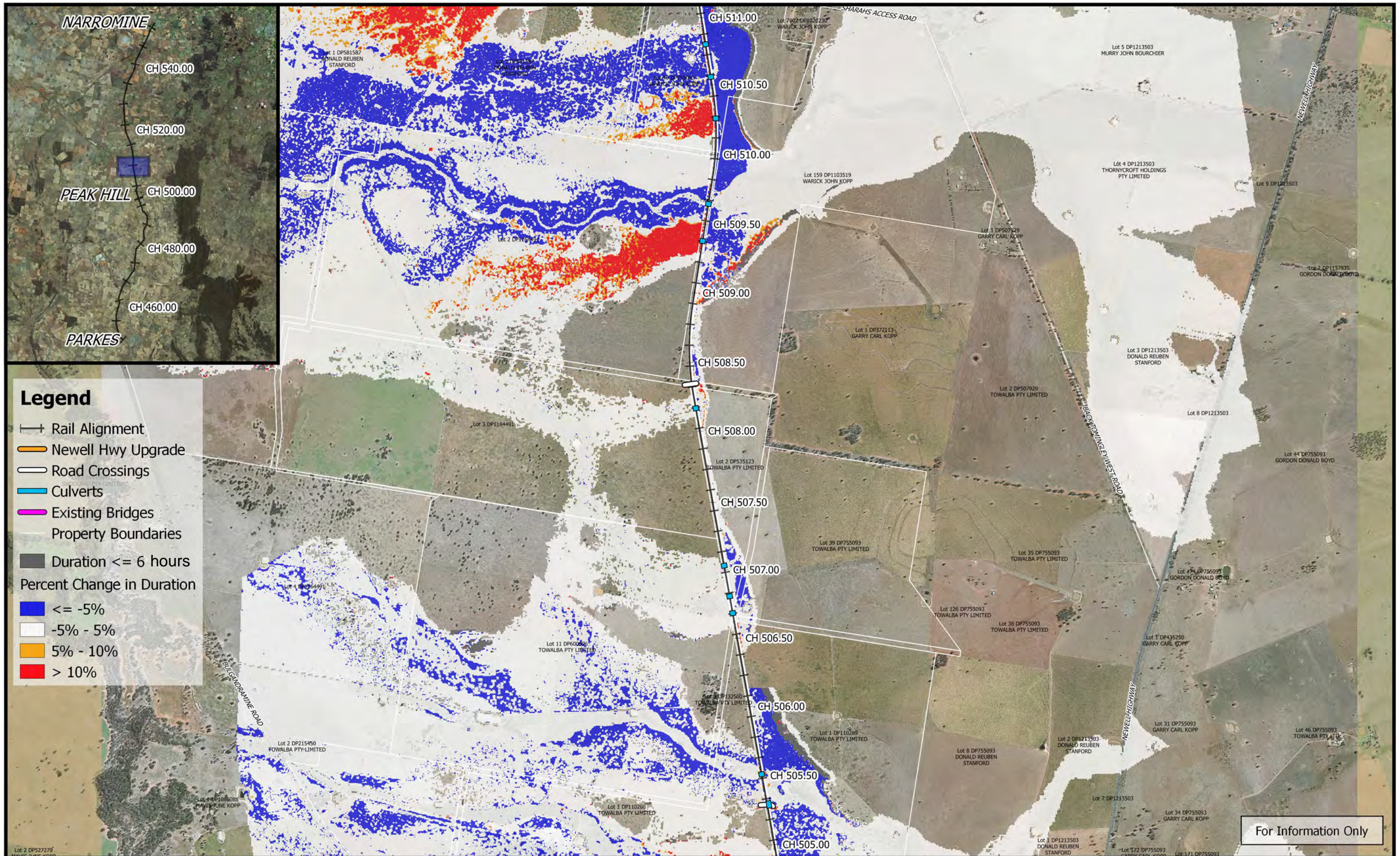
- Rail Alignment
- Newell Hwy Upgrade
- Road Crossings
- Culverts
- Existing Bridges
- Property Boundaries
- Duration <= 6 hours

Percent Change in Duration

- <= -5%
- 5% - 5%
- 5% - 10%
- > 10%

For Information Only

	<p>1:25,000</p>		Date: 15/10/2018	<p>Inland Rail - Parkes to Narromine IFC - Cross Drainage Flood Impact Assessment Results</p>
	Coordinate system: GDA 1994 MGA Zone 55 Inset Aerial Source: NSW Six Map Scale ratio correct when printed at A3		Rev: A - For Information Only	

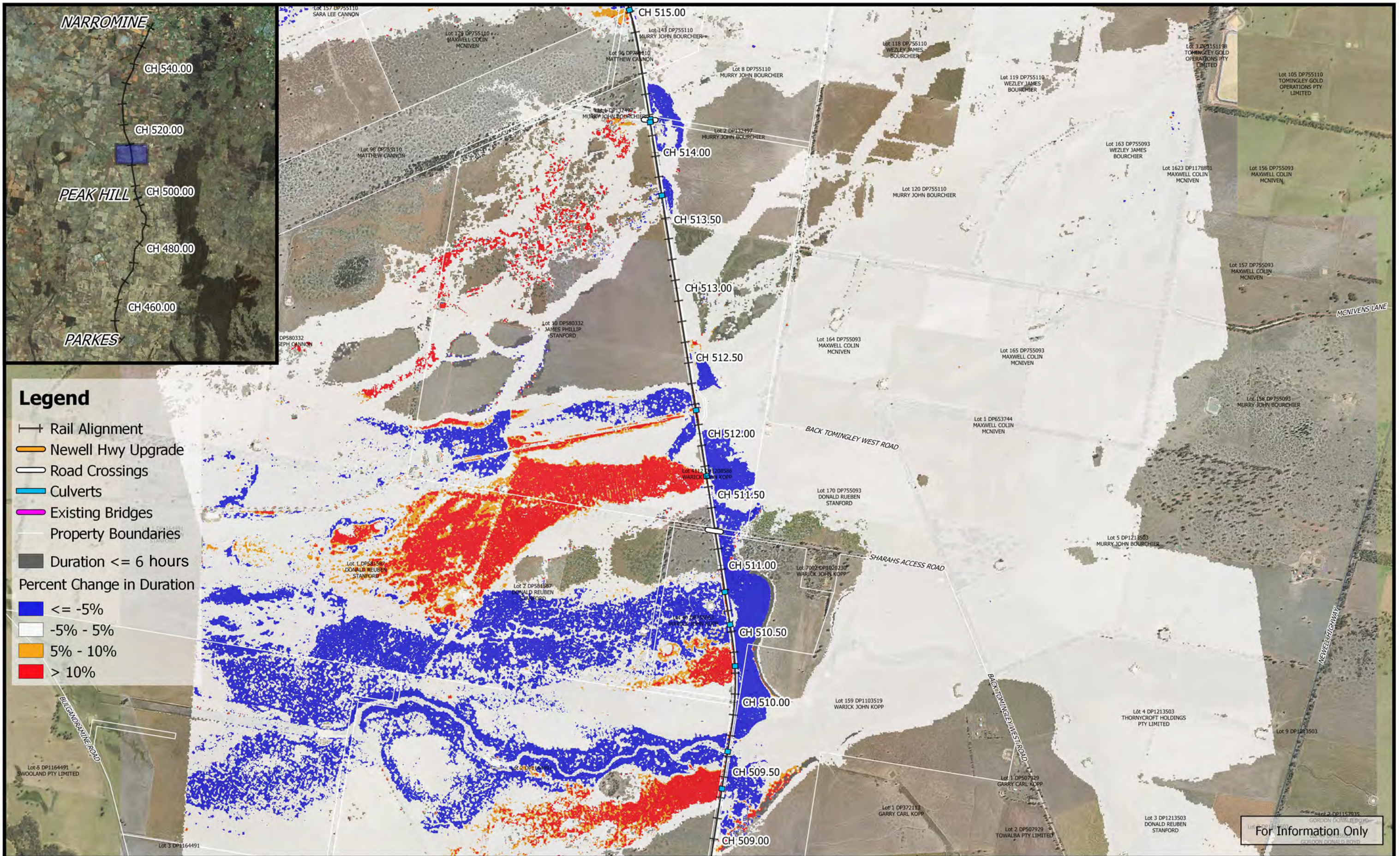


Legend

- Rail Alignment
- Newell Hwy Upgrade
- Road Crossings
- Culverts
- Existing Bridges
- Property Boundaries
- Duration <= 6 hours
- Percent Change in Duration**
- <= -5%
- 5% - 5%
- 5% - 10%
- > 10%

For Information Only

	<p>0 250 500 750 1000 m</p> <p>1:25,000</p>		Date: 15/10/2018	<p>Inland Rail - Parkes to Narromine IFC - Cross Drainage Flood Impact Assessment Results</p>
	Coordinate system: GDA 1994 MGA Zone 55 Inset Aerial Source: NSW Six Map Scale ratio correct when printed at A3		Rev: A - For Information Only	
			Prepared By: YeohM	

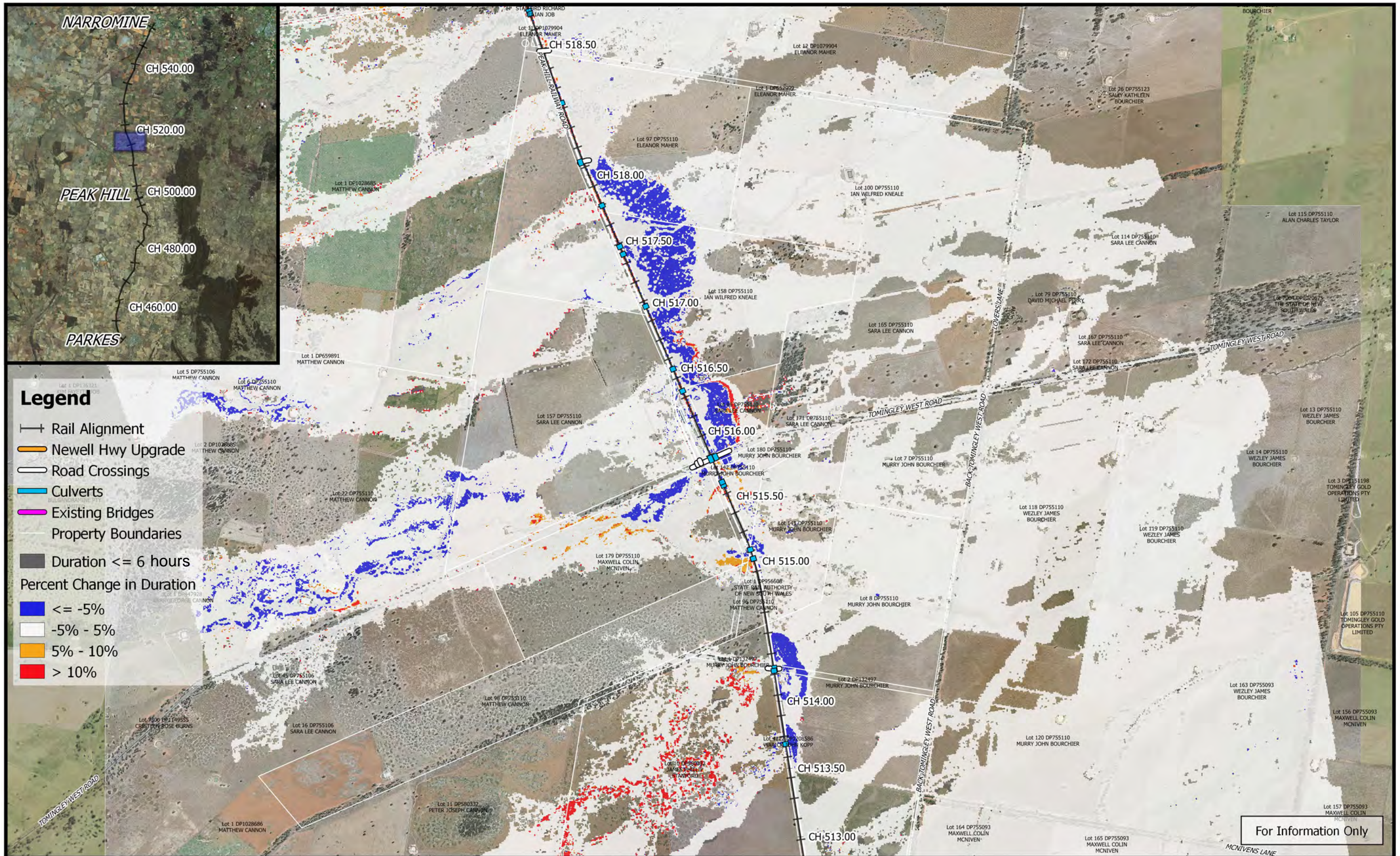


Legend

- +— Rail Alignment
- Newell Hwy Upgrade
- Road Crossings
- Culverts
- Existing Bridges
- Property Boundaries
- Duration <= 6 hours
- Percent Change in Duration
 - <= -5%
 - -5% - 5%
 - 5% - 10%
 - > 10%

For Information Only

	<p>0 250 500 750 1000 m</p> <p>1:25,000</p> <p>Coordinate system: GDA 1994 MGA Zone 55 Inset Aerial Source: NSW Six Map Scale ratio correct when printed at A3</p>		Date: 15/10/2018	<p>Inland Rail - Parkes to Narromine IFC - Cross Drainage Flood Impact Assessment Results</p> <p>Figure DE1CCDC16 1% AEP CC Percentage Change In Duration For Flood Depths > 200mm - CH 512.00</p>
			Rev: A - For Information Only	
			Prepared By: YeohM	



Legend

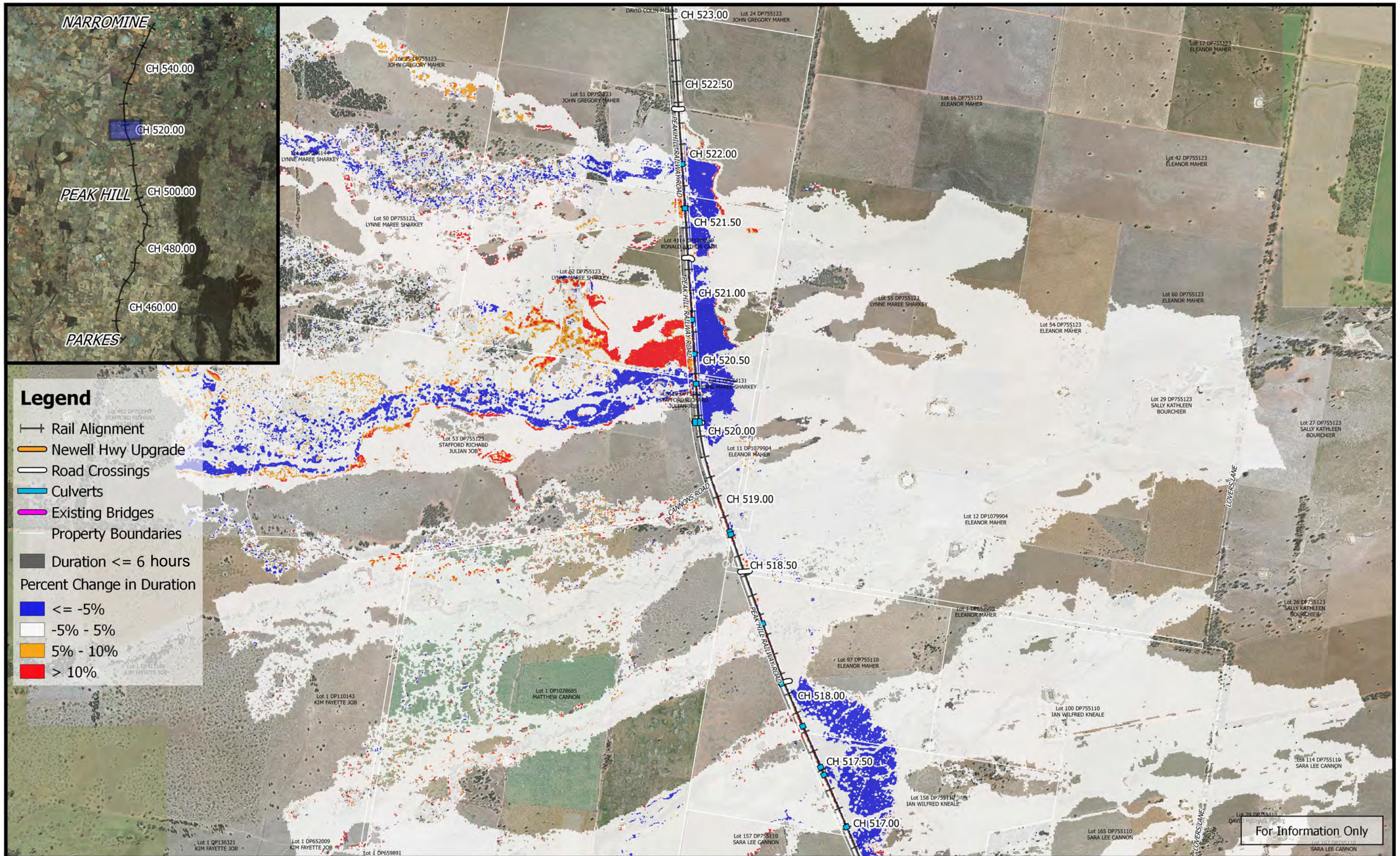
- Rail Alignment
- Newell Hwy Upgrade
- Road Crossings
- Culverts
- Existing Bridges
- Property Boundaries
- Duration ≤ 6 hours

Percent Change in Duration

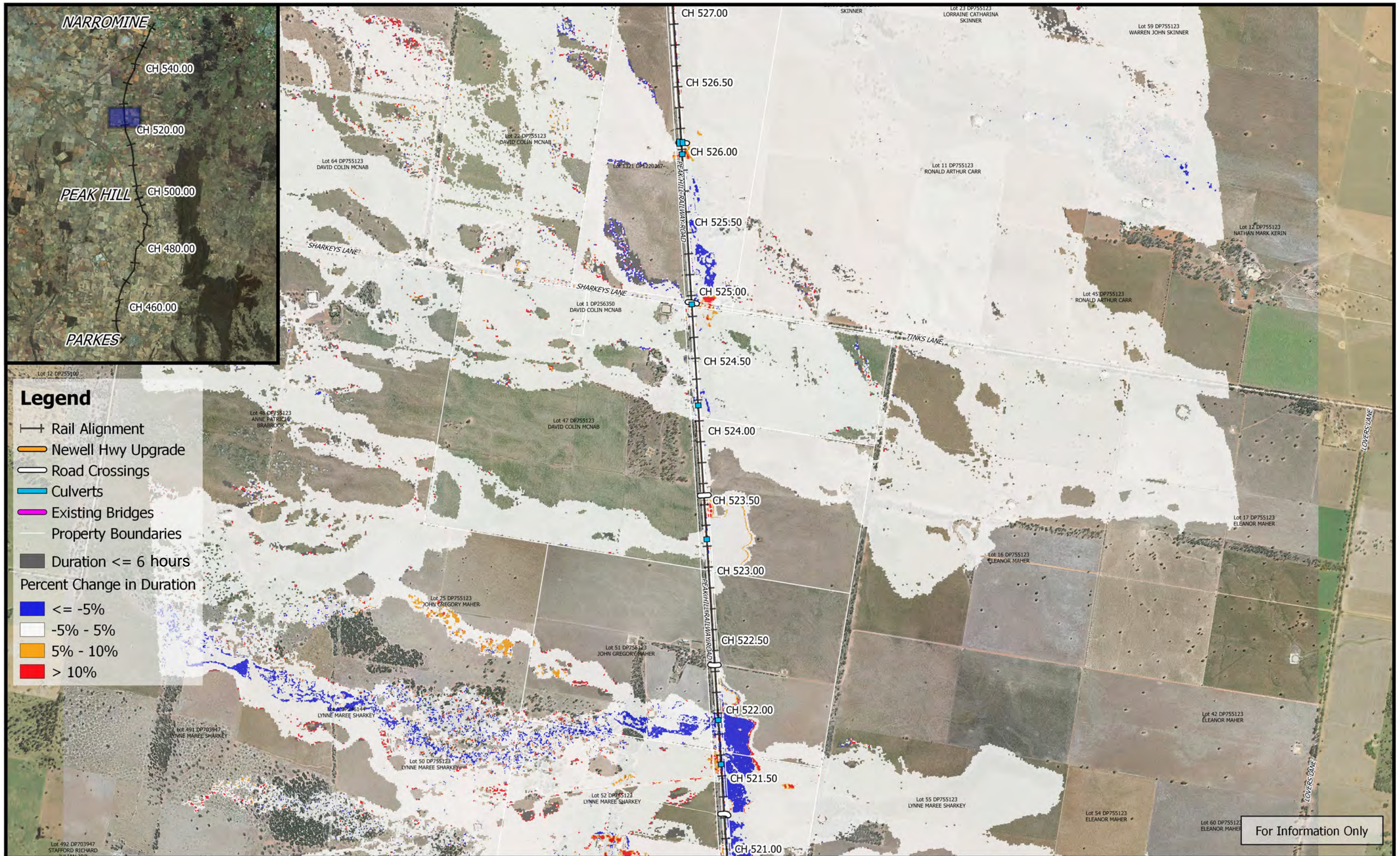
- $\le -5\%$
- $-5\% - 5\%$
- $5\% - 10\%$
- $> 10\%$

For Information Only

	<p>0 250 500 750 1000 m</p> <p>1:25,000</p> <p>Coordinate system: GDA 1994 MGA Zone 55 Inset Aerial Source: NSW Six Map Scale ratio correct when printed at A3</p>		Date: 15/10/2018	<p>Inland Rail - Parkes to Narromine IFC - Cross Drainage Flood Impact Assessment Results</p> <p>Figure DE1CCDC17 1% AEP CC Percentage Change In Duration For Flood Depths > 200mm - CH 515.00</p>
			Rev: A - For Information Only	
			Prepared By: YeohM	



	<p>0 250 500 750 1000 m</p> <p>1:25,000</p> <p>Coordinate system: GDA 1994 MGA Zone 55 Inset Aerial Source: NSW Six Map Scale ratio correct when printed at A3</p>		Date: 15/10/2018	<p>Inland Rail - Parkes to Narromine IFC - Cross Drainage Flood Impact Assessment Results</p>
			Rev: A - For Information Only	
			Prepared By: YeohM	

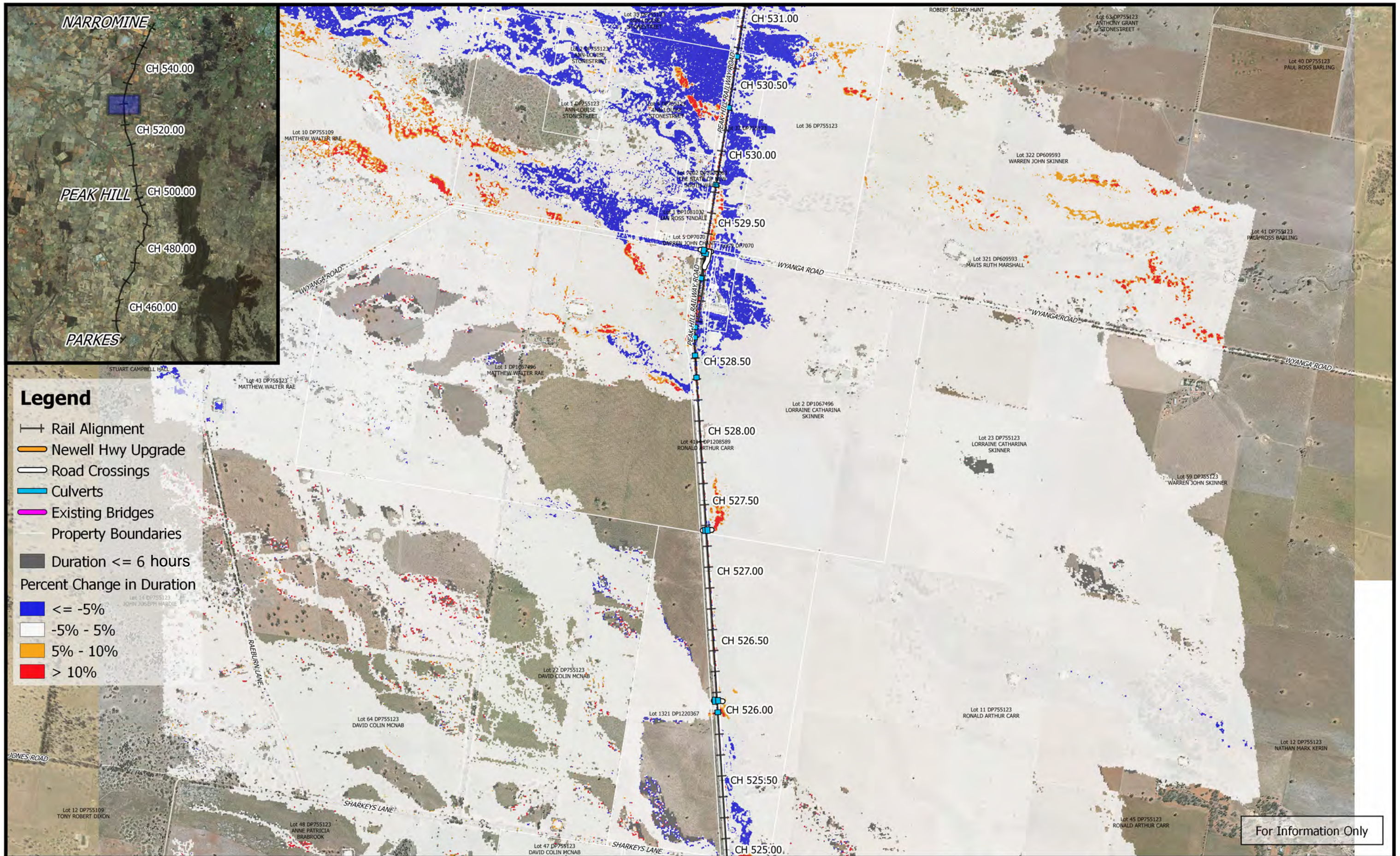


Legend

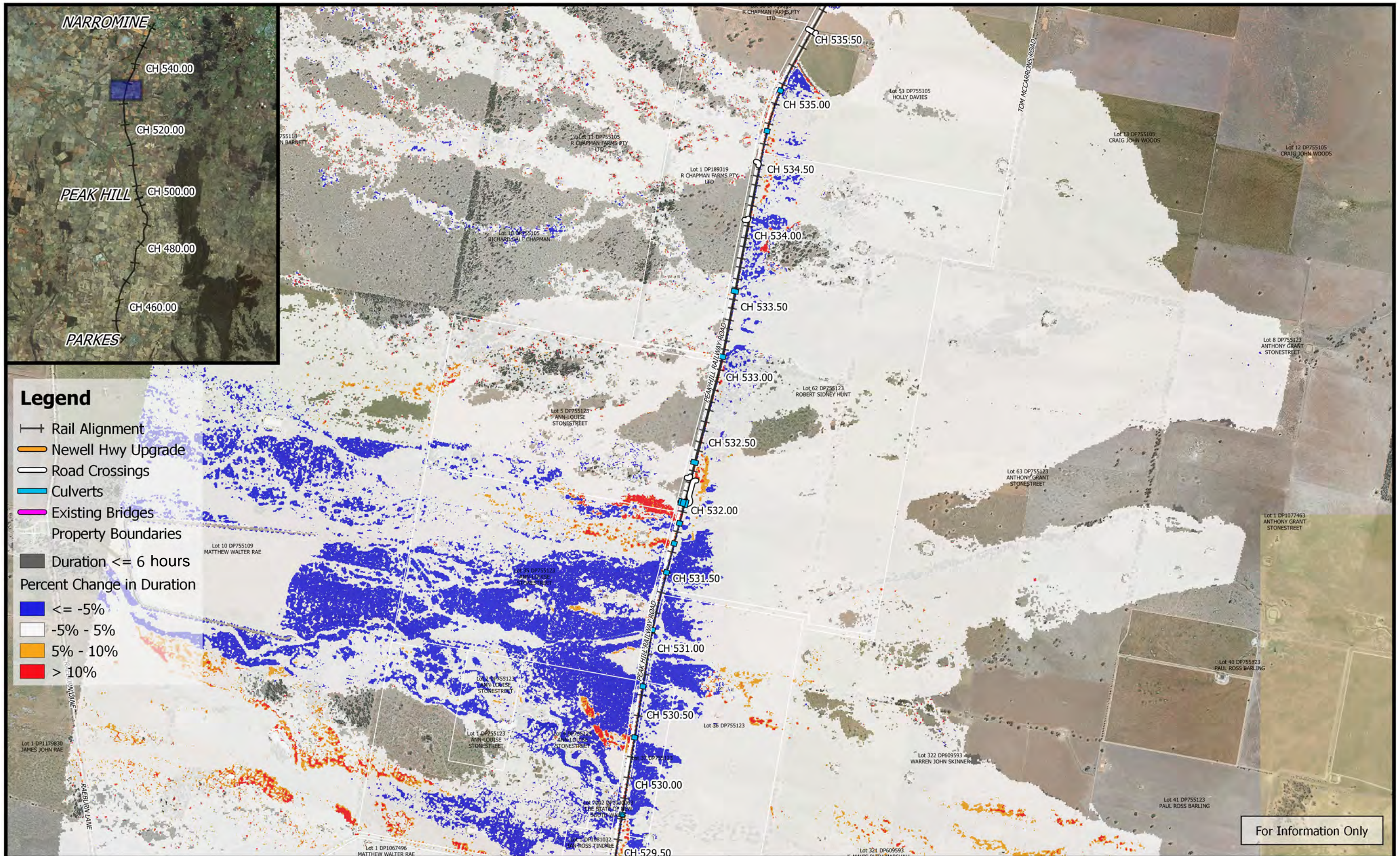
- +— Rail Alignment
- Newell Hwy Upgrade
- Road Crossings
- Culverts
- Existing Bridges
- Property Boundaries
- Duration <= 6 hours
- Percent Change in Duration
- <= -5%
- -5% - 5%
- 5% - 10%
- > 10%

For Information Only

	<p>0 250 500 750 1000 m</p> <p>1:25,000</p> <p>Coordinate system: GDA 1994 MGA Zone 55 Inset Aerial Source: NSW Six Map Scale ratio correct when printed at A3</p>		Date: 15/10/2018	<p>Inland Rail - Parkes to Narromine IFC - Cross Drainage Flood Impact Assessment Results</p> <p>Figure DE1CCDC19 1% AEP CC Percentage Change In Duration For Flood Depths > 200mm - CH 525.00</p>
			Rev: A - For Information Only	
			Prepared By: YeohM	

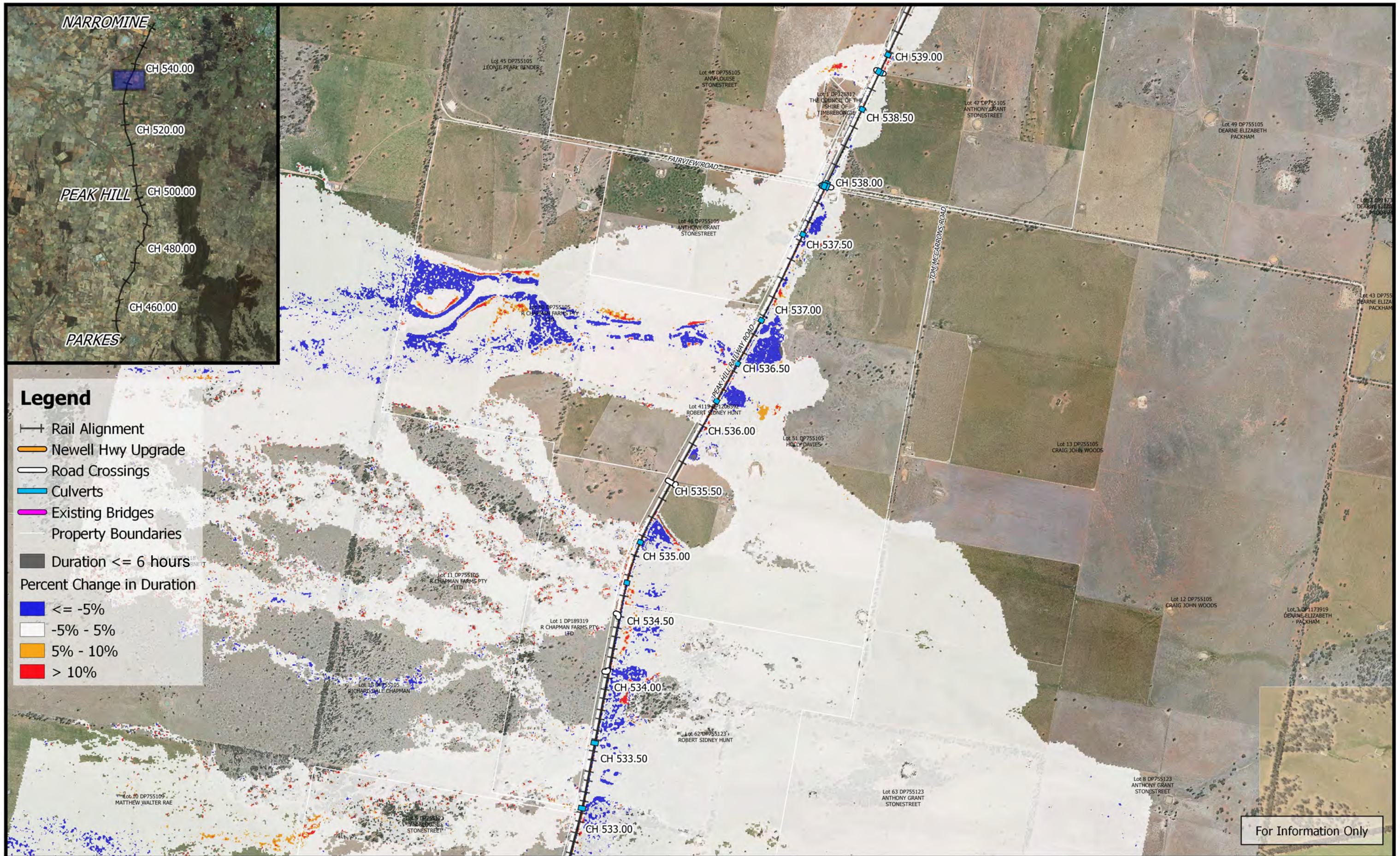


	<p>0 250 500 750 1000 m</p> <p>1:25,000</p> <p>Coordinate system: GDA 1994 MGA Zone 55 Inset Aerial Source: NSW Six Map Scale ratio correct when printed at A3</p>		Date: 15/10/2018	<p>Inland Rail - Parkes to Narromine IFC - Cross Drainage Flood Impact Assessment Results</p> <p>Figure DE1CCDC20 1% AEP CC Percentage Change In Duration For Flood Depths > 200mm - CH 530.00</p>
			Rev: A - For Information Only	
Prepared By: YeohM				

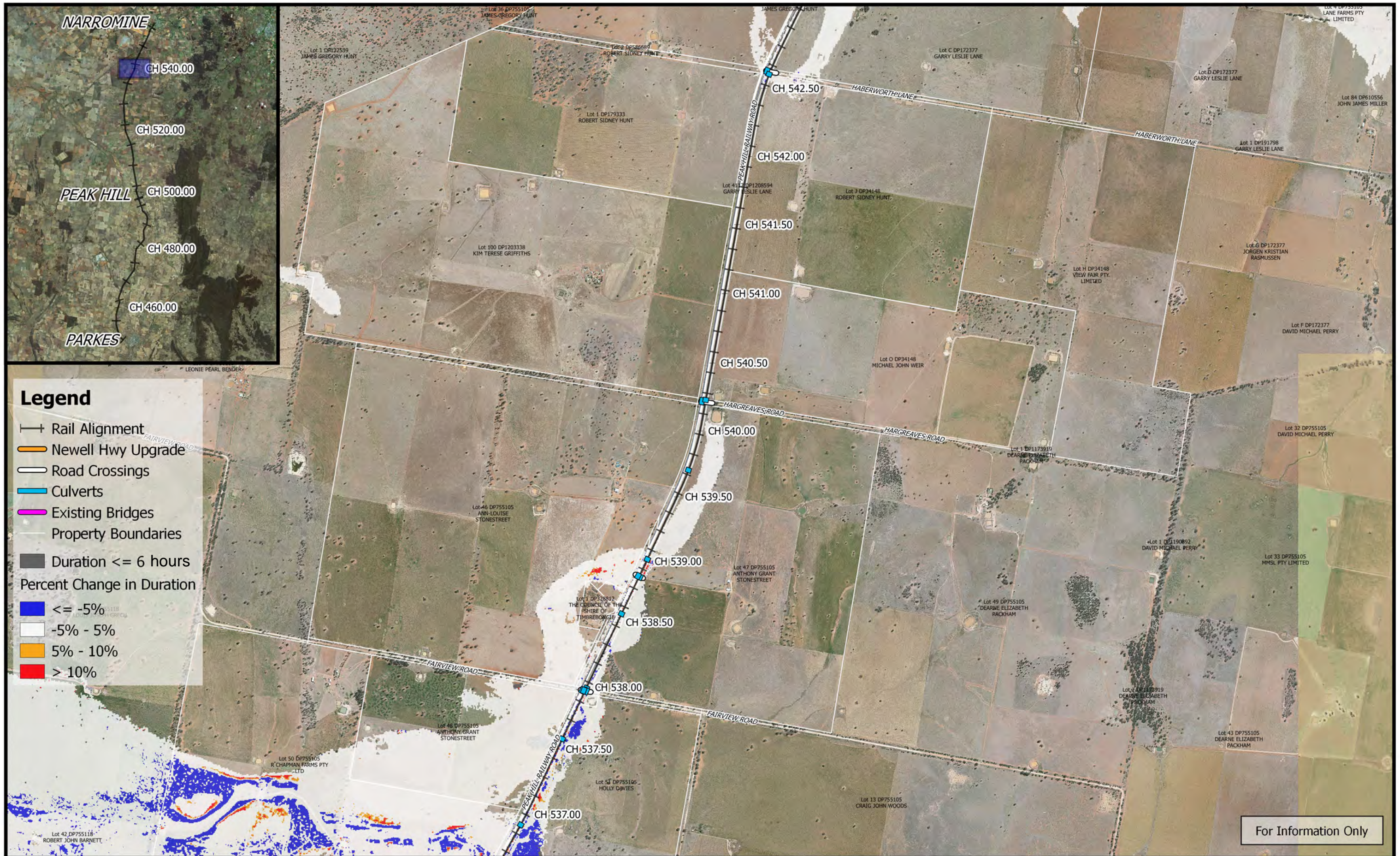


For Information Only



	<p>0 250 500 750 1000 m</p> <p>1:25,000</p> <p>Coordinate system: GDA 1994 MGA Zone 55 Inset Aerial Source: NSW Six Map Scale ratio correct when printed at A3</p>		Date: 15/10/2018	<p>Inland Rail - Parkes to Narromine IFC - Cross Drainage Flood Impact Assessment Results</p>
			Rev: A - For Information Only	
		Prepared By: YeohM		

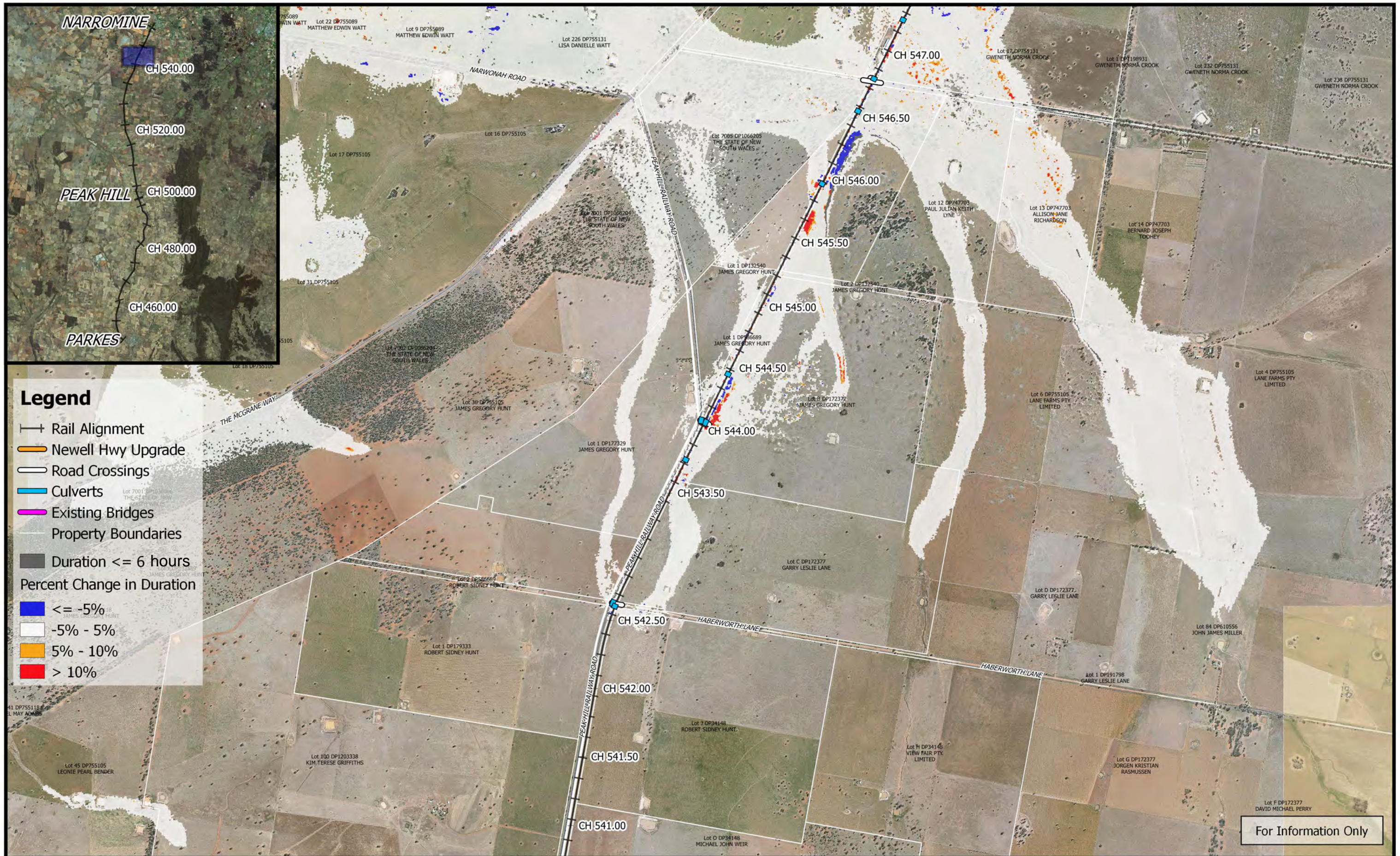


	<p>0 250 500 750 1000 m</p> <p>1:25,000</p> <p>Coordinate system: GDA 1994 MGA Zone 55 Inset Aerial Source: NSW Six Map Scale ratio correct when printed at A3</p>		Date: 15/10/2018	<p align="center">Inland Rail - Parkes to Narromine IFC - Cross Drainage Flood Impact Assessment Results</p>
			Rev: A - For Information Only	
			Prepared By: YeohM	


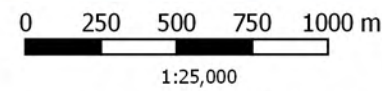



For Information Only

	<p>0 250 500 750 1000 m</p> <p>1:25,000</p> <p>Coordinate system: GDA 1994 MGA Zone 55 Inset Aerial Source: NSW Six Map Scale ratio correct when printed at A3</p>		Date: 15/10/2018	<p align="center">Inland Rail - Parkes to Narromine IFC - Cross Drainage Flood Impact Assessment Results</p>
			Rev: A - For Information Only	
			Prepared By: YeohM	



For Information Only

	 <p>Coordinate system: GDA 1994 MGA Zone 55 Inset Aerial Source: NSW Six Map Scale ratio correct when printed at A3</p>		Date: 15/10/2018	<p align="center">Inland Rail - Parkes to Narromine IFC - Cross Drainage Flood Impact Assessment Results</p>
			Rev: A - For Information Only	
			Prepared By: YeohM	

