

Appendix C

Design Conditions Flood Maps

C1 – Flood Level Change (Afflux) 39% AEP

C2 – Flood Level Change (Afflux) 10% AEP

C3 – Flood Level Change (Afflux) 1% AEP

C4 – Flood Level Change (Afflux) 1% AEP with climate change

C5 – Flood Velocity Change 39% AEP

C6 – Flood Velocity Change 10% AEP

C7 – Flood Velocity Change 1% AEP

C8 – Flood Velocity Change 1% AEP with climate change

C9 – Flood Duration Change 39% AEP

C10 – Flood Duration Change 10% AEP

C11 – Flood Duration Change 1% AEP

C12 – Flood Duration Change 1% AEP with climate change







- Legend**
- Rail Alignment
 - Newell Hwy Upgrade
 - Road Crossings
 - Culverts
 - Existing Bridges
 - Property Boundaries
- Afflux (m):**
- ≤ -0.2
 - 0.1 - -0.2
 - 0.1 - 0.05
 - 0.05 - 0.1
 - 0.1 - 0.2
 - ≥ 0.2
 - No Longer Inundated

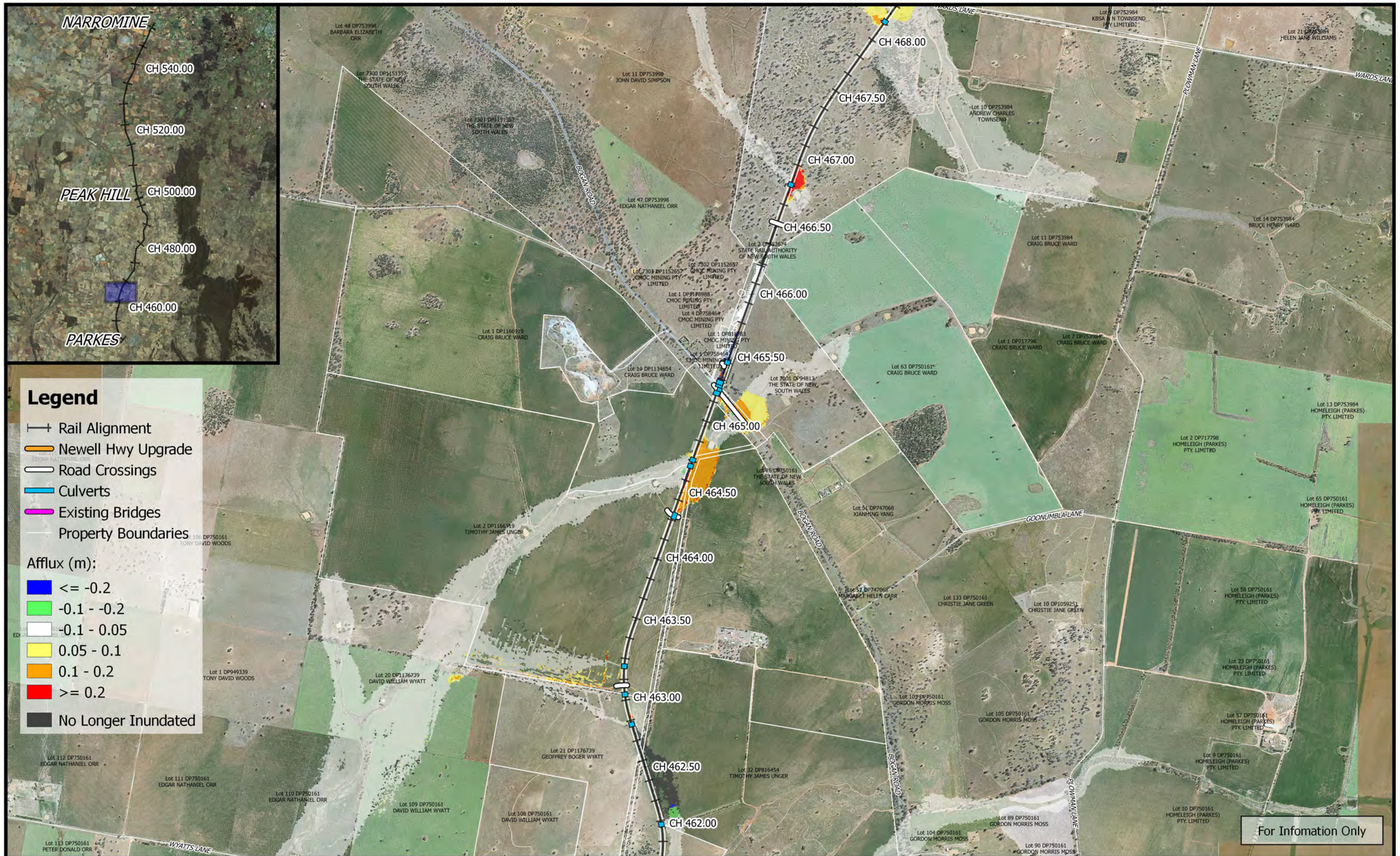
For Information Only

	<p>1:25,000</p> <p>Coordinate system: GDA 1994 MGA Zone 55 Aerial Source: NSW Six Map Scale ratio correct when printed at A3</p>		<p>Date: 15/10/2018</p> <p>Rev: A - For Information Only</p> <p>Prepared By: YeohM</p>	<p>Inland Rail - Parkes to Narromine IFC - Cross Drainage Flood Impact Assessment Results</p> <p>Figure DE1CCA2 <i>1% AEP Climate Change Flood Afflux - CH 455.00</i></p>
--	--	--	--	---



For Information Only

	<p>0 250 500 750 1000 m</p> <p>1:25,000</p> <p>Coordinate system: GDA 1994 MGA Zone 55 Aerial Source: NSW Six Map Scale ratio correct when printed at A3</p>		Date: 15/10/2018	<p align="center">Inland Rail - Parkes to Narromine IFC - Cross Drainage Flood Impact Assessment Results</p> <p align="right">Figure DE1CCA3 <i>1% AEP Climate Change Flood Afflux - CH 460.00</i></p>
			Rev: A - For Information Only	
			Prepared By: YeohM	



Legend

- Rail Alignment
- Newell Hwy Upgrade
- Road Crossings
- Culverts
- Existing Bridges
- Property Boundaries

Afflux (m):

- ≤ -0.2
- 0.1 - -0.2
- 0.1 - 0.05
- 0.05 - 0.1
- 0.1 - 0.2
- ≥ 0.2
- No Longer Inundated

For Information Only

	<p>1:25,000</p>		Date: 15/10/2018	<p>Inland Rail - Parkes to Narromine IFC - Cross Drainage Flood Impact Assessment Results</p> <p>Figure DE1CCA4 <i>1% AEP Climate Change Flood Afflux - CH 465.00</i></p>
	<p>Coordinate system: GDA 1994 MGA Zone 55 Aerial Source: NSW Six Map Scale ratio correct when printed at A3</p>		<p>Rev: A - For Information Only</p>	



Legend

- Rail Alignment
- Newell Hwy Upgrade
- Road Crossings
- Culverts
- Existing Bridges
- Property Boundaries

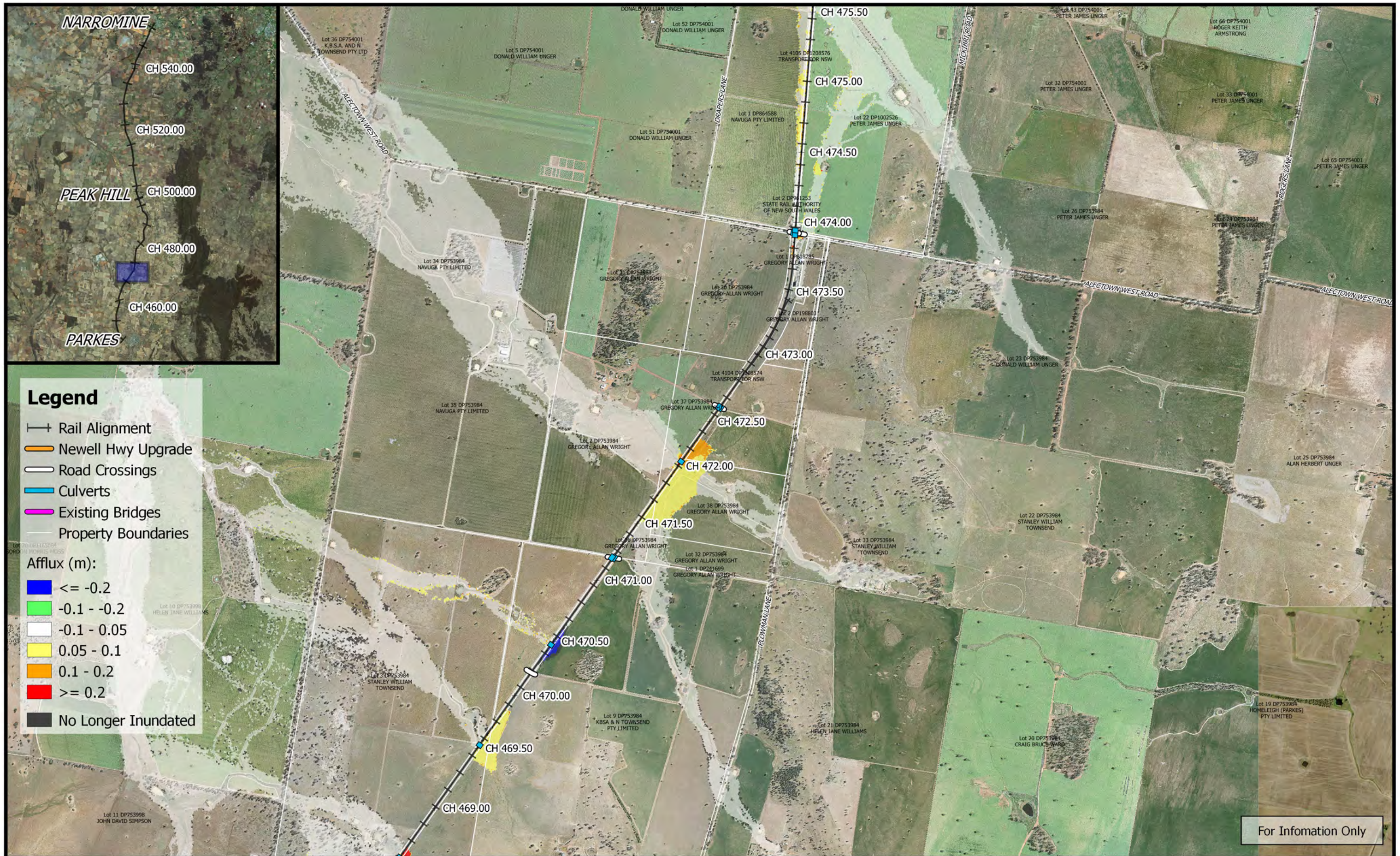
Afflux (m):

- ≤ -0.2
- $-0.1 - -0.2$
- $-0.1 - 0.05$
- $0.05 - 0.1$
- $0.1 - 0.2$
- ≥ 0.2
- No Longer Inundated


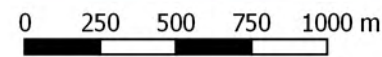

For Information Only

	<p>1:25,000</p>	 	Date: 15/10/2018	<p>Inland Rail - Parkes to Narromine IFC - Cross Drainage Flood Impact Assessment Results</p> <p>Figure DE1CCA5 1% AEP Climate Change Flood Afflux - CH 470.00</p>	
	Coordinate system: GDA 1994 MGA Zone 55 Aerial Source: NSW Six Map Scale ratio correct when printed at A3		Rev: A - For Information Only		
			Prepared By: YeohM		

E:\L2d\Synergy\2\IR P2N_1\01 WIP\Flooding and Drainage\GIS Mapping\Individual Property Maps\Mapping_Full_Project.gis - 2.18.21


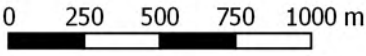



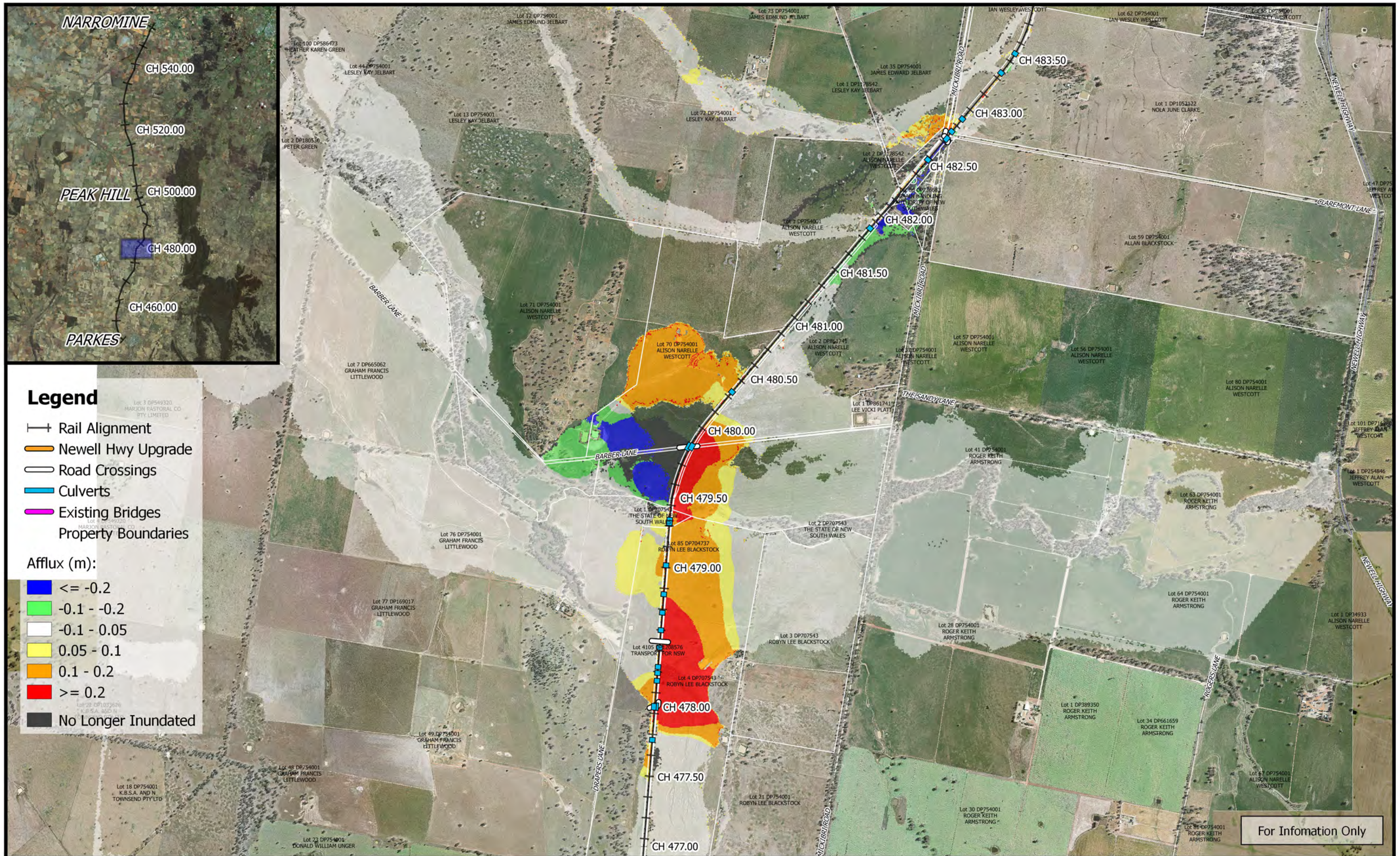
For Information Only

	 1:25,000		Date: 15/10/2018	Inland Rail - Parkes to Narromine IFC - Cross Drainage Flood Impact Assessment Results Figure DE1CCA6 <i>1% AEP Climate Change Flood Afflux - CH 472.00</i>
	Coordinate system: GDA 1994 MGA Zone 55 Aerial Source: NSW Six Map Scale ratio correct when printed at A3		Rev: A - For Information Only	
	Prepared By: YeohM			



For Information Only

	 1:25,000 Coordinate system: GDA 1994 MGA Zone 55 Aerial Source: NSW Six Map Scale ratio correct when printed at A3		Date: 15/10/2018	Inland Rail - Parkes to Narromine IFC - Cross Drainage Flood Impact Assessment Results Figure DE1CCA7 <i>1% AEP Climate Change Flood Afflux - CH 475.00</i>
			Rev: A - For Information Only	

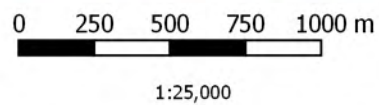


Legend

- Rail Alignment
- Newell Hwy Upgrade
- Road Crossings
- Culverts
- Existing Bridges
- Property Boundaries

- Afflux (m):**
- ≤ -0.2
 - $-0.1 - -0.2$
 - $-0.1 - 0.05$
 - $0.05 - 0.1$
 - $0.1 - 0.2$
 - ≥ 0.2
 - No Longer Inundated

For Information Only



Coordinate system: GDA 1994 MGA Zone 55
 Aerial Source: NSW Six Map
 Scale ratio correct when printed at A3



Date: 15/10/2018

Rev: A - For Information Only

Prepared By: YeohM

Inland Rail - Parkes to Narromine
 IFC - Cross Drainage Flood Impact Assessment Results

Figure DE1CCA8
 1% AEP Climate Change Flood Afflux - CH 480.00



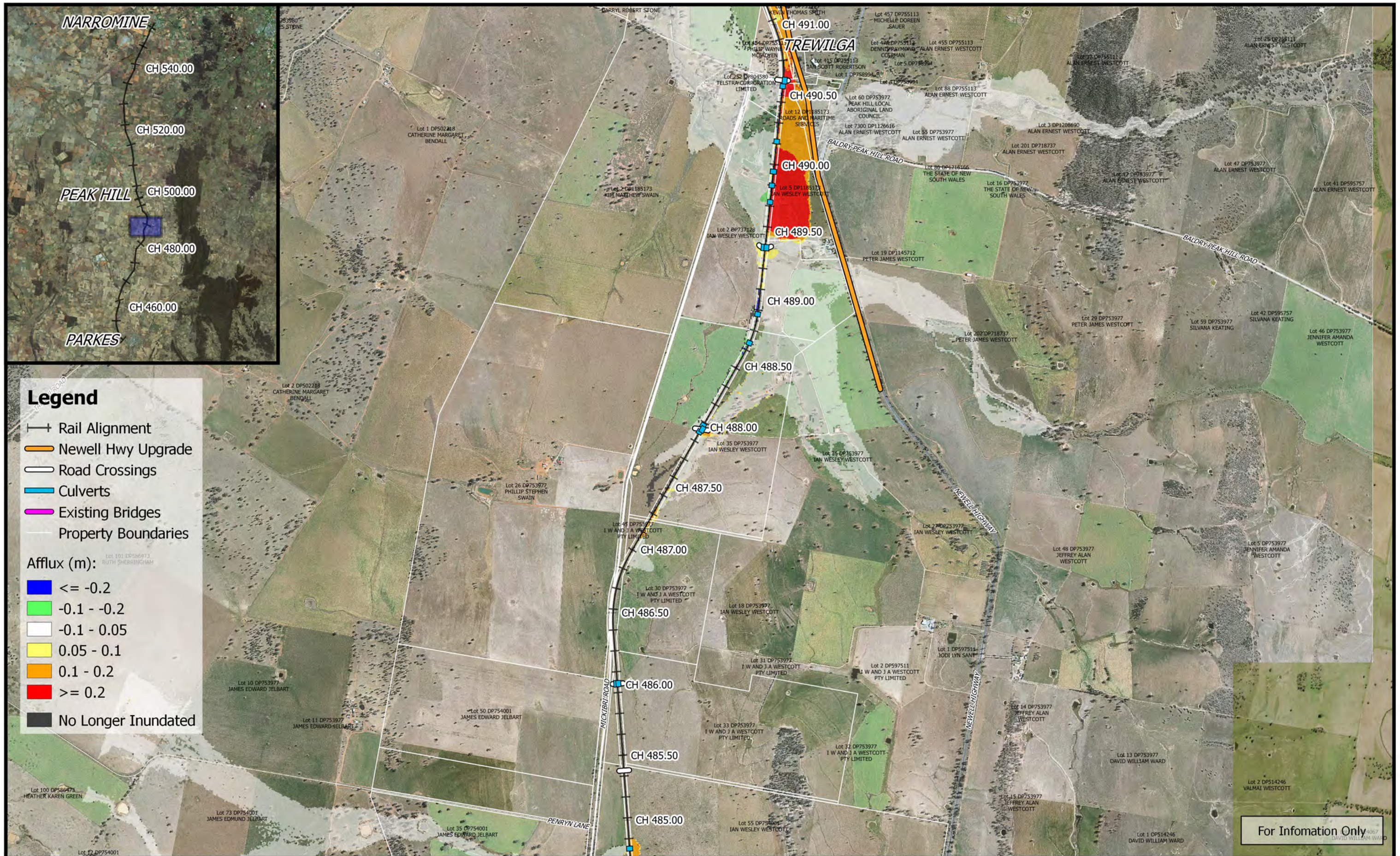
Legend

- Rail Alignment
- Newell Hwy Upgrade
- Road Crossings
- Culverts
- Existing Bridges
- Property Boundaries

- Afflux (m):**
- <= -0.2
 - 0.1 - -0.2
 - 0.1 - 0.05
 - 0.05 - 0.1
 - 0.1 - 0.2
 - >= 0.2
 - No Longer Inundated

For Information Only

	 1:25,000 Coordinate system: GDA 1994 MGA Zone 55 Aerial Source: NSW Six Map Scale ratio correct when printed at A3		Date: 15/10/2018	Inland Rail - Parkes to Narromine IFC - Cross Drainage Flood Impact Assessment Results Figure DE1CCA9 <i>1% AEP Climate Change Flood Afflux - CH 485.00</i>
			Rev: A - For Information Only	




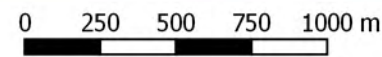

- Legend**
- Rail Alignment
 - Newell Hwy Upgrade
 - Road Crossings
 - Culverts
 - Existing Bridges
 - Property Boundaries

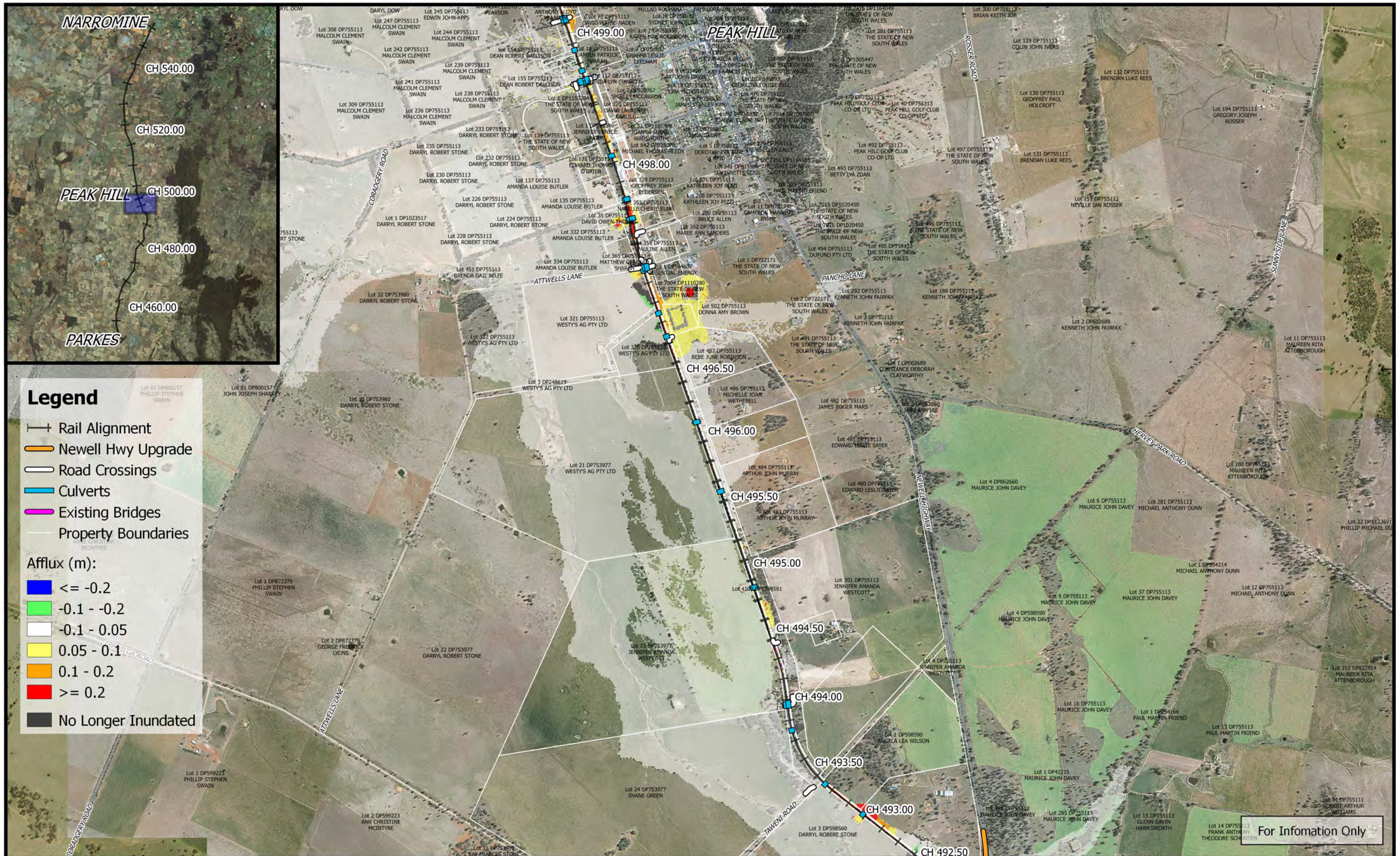
- Afflux (m):**
- ≤ -0.2
 - 0.1 - -0.2
 - 0.1 - 0.05
 - 0.05 - 0.1
 - 0.1 - 0.2
 - ≥ 0.2
 - No Longer Inundated

For Information Only

	 1:25,000		Date: 15/10/2018	Inland Rail - Parkes to Narromine IFC - Cross Drainage Flood Impact Assessment Results
	Coordinate system: GDA 1994 MGA Zone 55 Aerial Source: NSW Six Map Scale ratio correct when printed at A3		Rev: A - For Information Only	
Prepared By: YeohM				



	 1:25,000		Date: 15/10/2018	Inland Rail - Parkes to Narromine IFC - Cross Drainage Flood Impact Assessment Results Figure DE1CCA11 <i>1% AEP Climate Change Flood Afflux - CH 492.00</i>
	Coordinate system: GDA 1994 MGA Zone 55 Aerial Source: NSW Six Map Scale ratio correct when printed at A3		Rev: A - For Information Only	
	Prepared By: YeohM			



Legend

- Rail Alignment
- Newell Hwy Upgrade
- Road Crossings
- Culverts
- Existing Bridges
- Property Boundaries

- Afflux (m):**
- ≤ -0.2
 - 0.1 - -0.2
 - 0.1 - 0.05
 - 0.05 - 0.1
 - 0.1 - 0.2
 - >= 0.2
 - No Longer Inundated

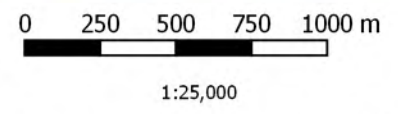
Date: 15/10/2018

Rev: A - For Information Only

Prepared By: YeohM

Inland Rail - Parkes to Narromine
IFC - Cross Drainage Flood Impact Assessment Results

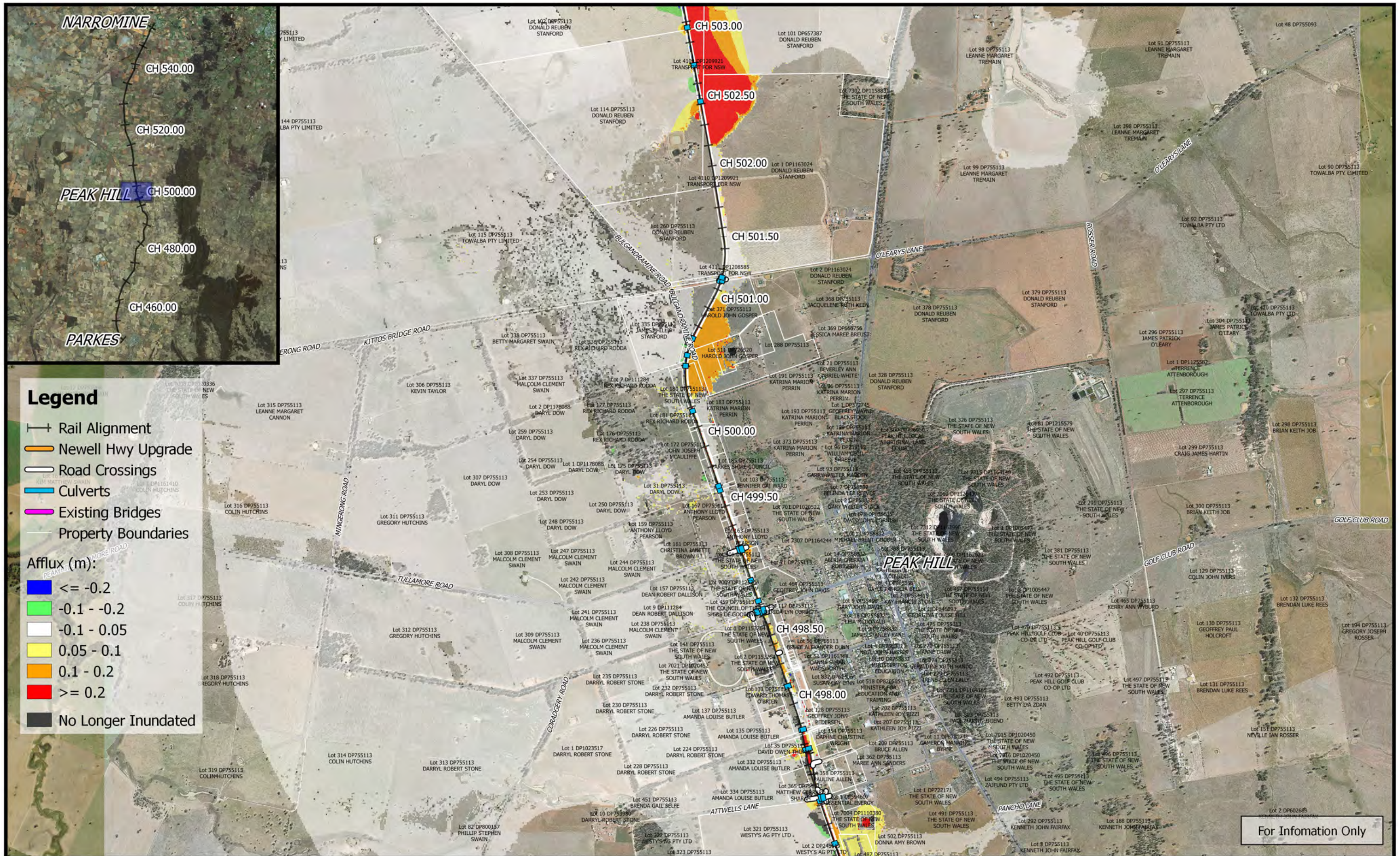
Figure DE1CCA12
1% AEP Climate Change Flood Afflux - CH 495.00



Coordinate system: GDA 1994 MGA Zone 55
Aerial Source: NSW Six Map
Scale ratio correct when printed at A3



For Information Only



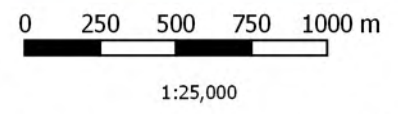
Legend

- Rail Alignment
- Newell Hwy Upgrade
- Road Crossings
- Culverts
- Existing Bridges
- Property Boundaries

Afflux (m):

- ≤ -0.2
- $-0.1 - -0.2$
- $-0.1 - 0.05$
- $0.05 - 0.1$
- $0.1 - 0.2$
- ≥ 0.2
- No Longer Inundated

For Information Only



Coordinate system: GDA 1994 MGA Zone 55
 Aerial Source: NSW Six Map
 Scale ratio correct when printed at A3



Date: 15/10/2018

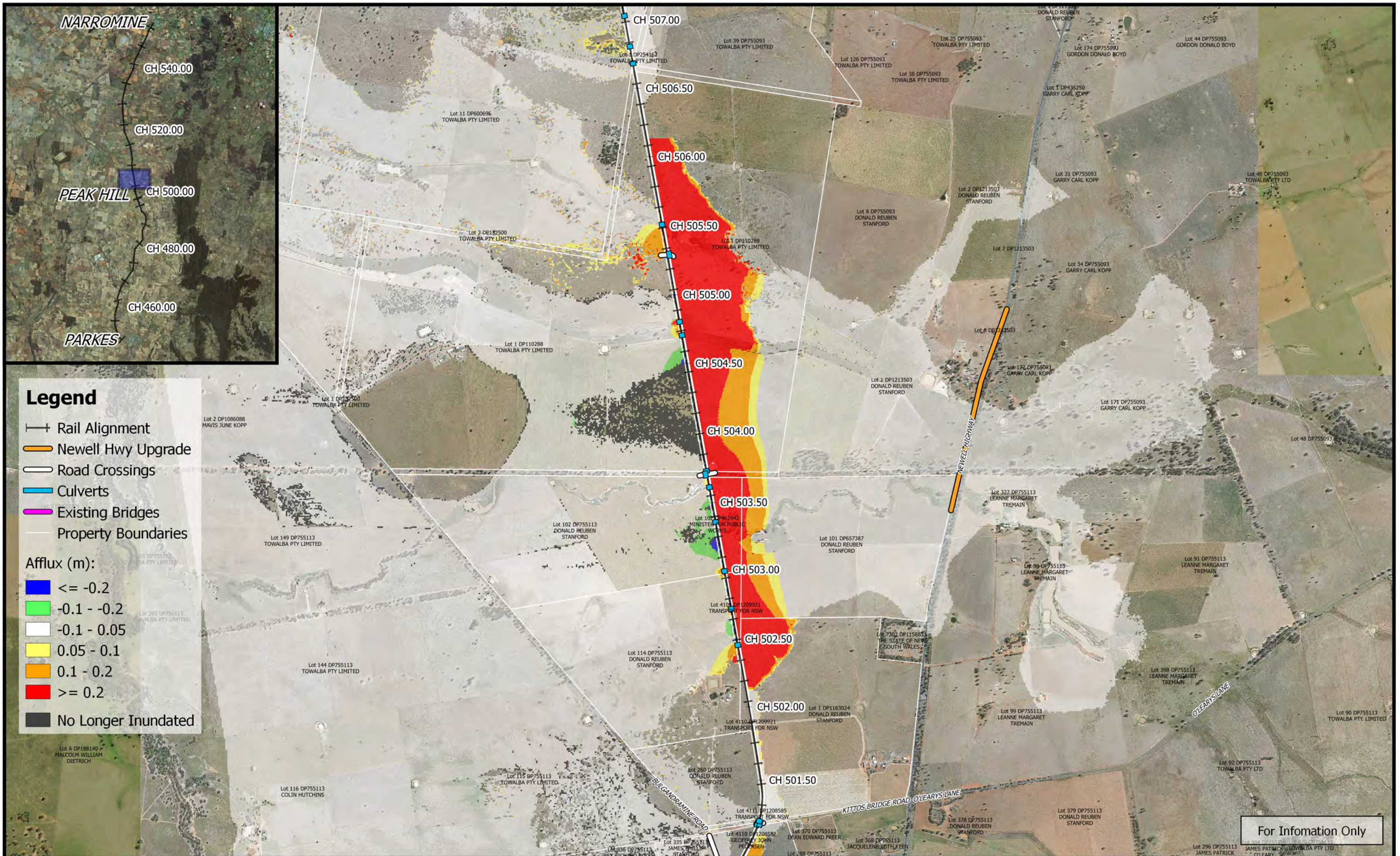
Rev: A - For Information Only

Prepared By: YeohM

Inland Rail - Parkes to Narromine
 IFC - Cross Drainage Flood Impact Assessment Results

Figure DE1CCA13
 1% AEP Climate Change Flood Afflux - CH 500.00

E:\L2d\Synergy\2\IR_P2N_1\01 WIP\Flooding and Drainage\GIS Mapping\Individual Property Maps\Mapping_Full_Project.ags - 2.18.21



Legend

- Rail Alignment
- Newell Hwy Upgrade
- Road Crossings
- Culverts
- Existing Bridges
- Property Boundaries

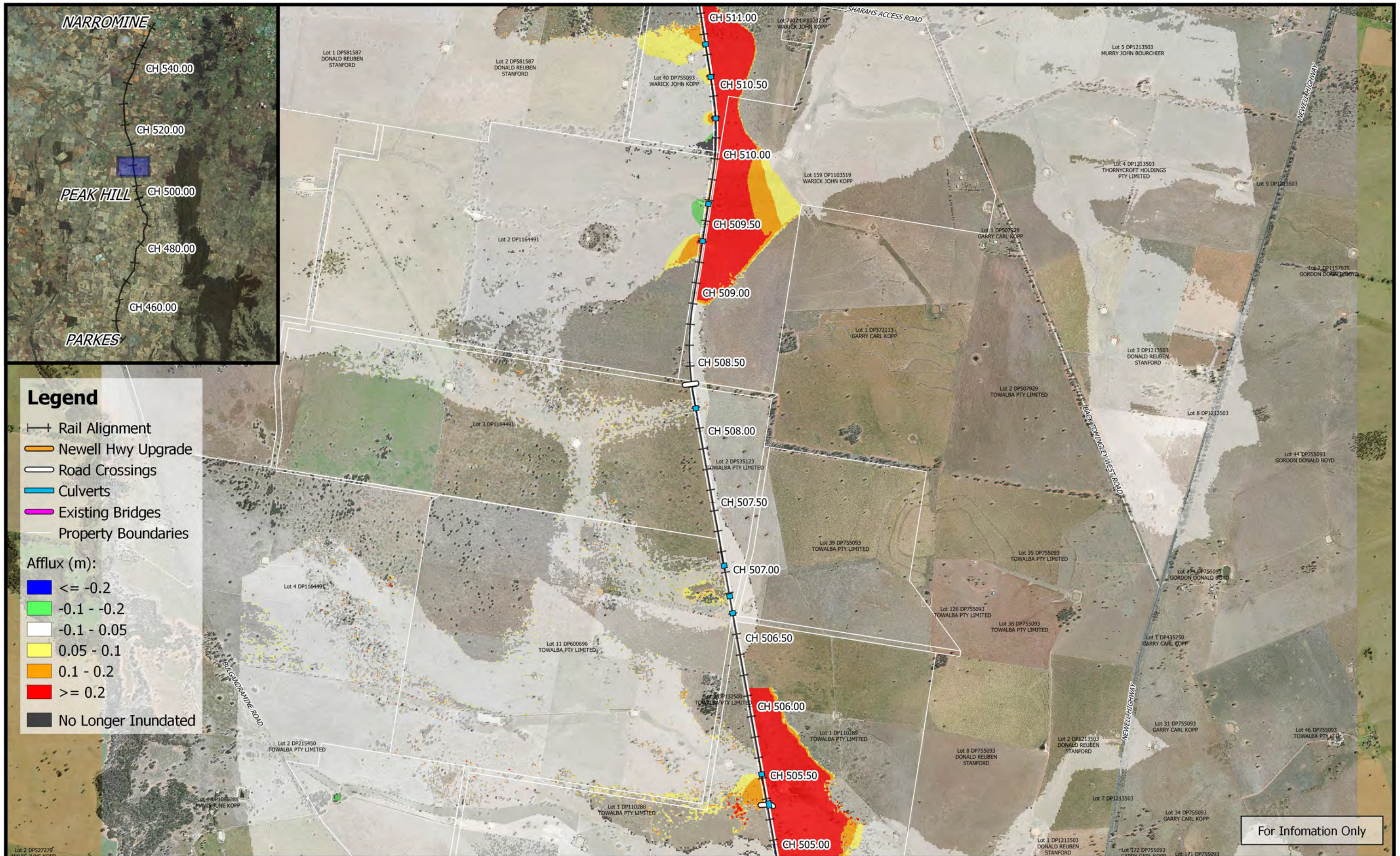
Afflux (m):

- <= -0.2
- 0.1 - -0.2
- 0.1 - 0.05
- 0.05 - 0.1
- 0.1 - 0.2
- >= 0.2
- No Longer Inundated

For Information Only

	<p>1:25,000</p>		Date: 15/10/2018	<p>Inland Rail - Parkes to Narromine IFC - Cross Drainage Flood Impact Assessment Results</p> <p>Figure DE1CCA14 <i>1% AEP Climate Change Flood Afflux - CH 505.00</i></p>
	<p>Coordinate system: GDA 1994 MGA Zone 55 Aerial Source: NSW Six Map Scale ratio correct when printed at A3</p>		<p>Rev: A - For Information Only</p>	

E:\L2d\Synergy\2\IR P2N_1\01 WIP\Flooding and Drainage\GIS Mapping\Individual Property Maps\Mapping_Full_Project.ags - 2.18.21



Legend

- Rail Alignment
- Newell Hwy Upgrade
- Road Crossings
- Culverts
- Existing Bridges
- Property Boundaries

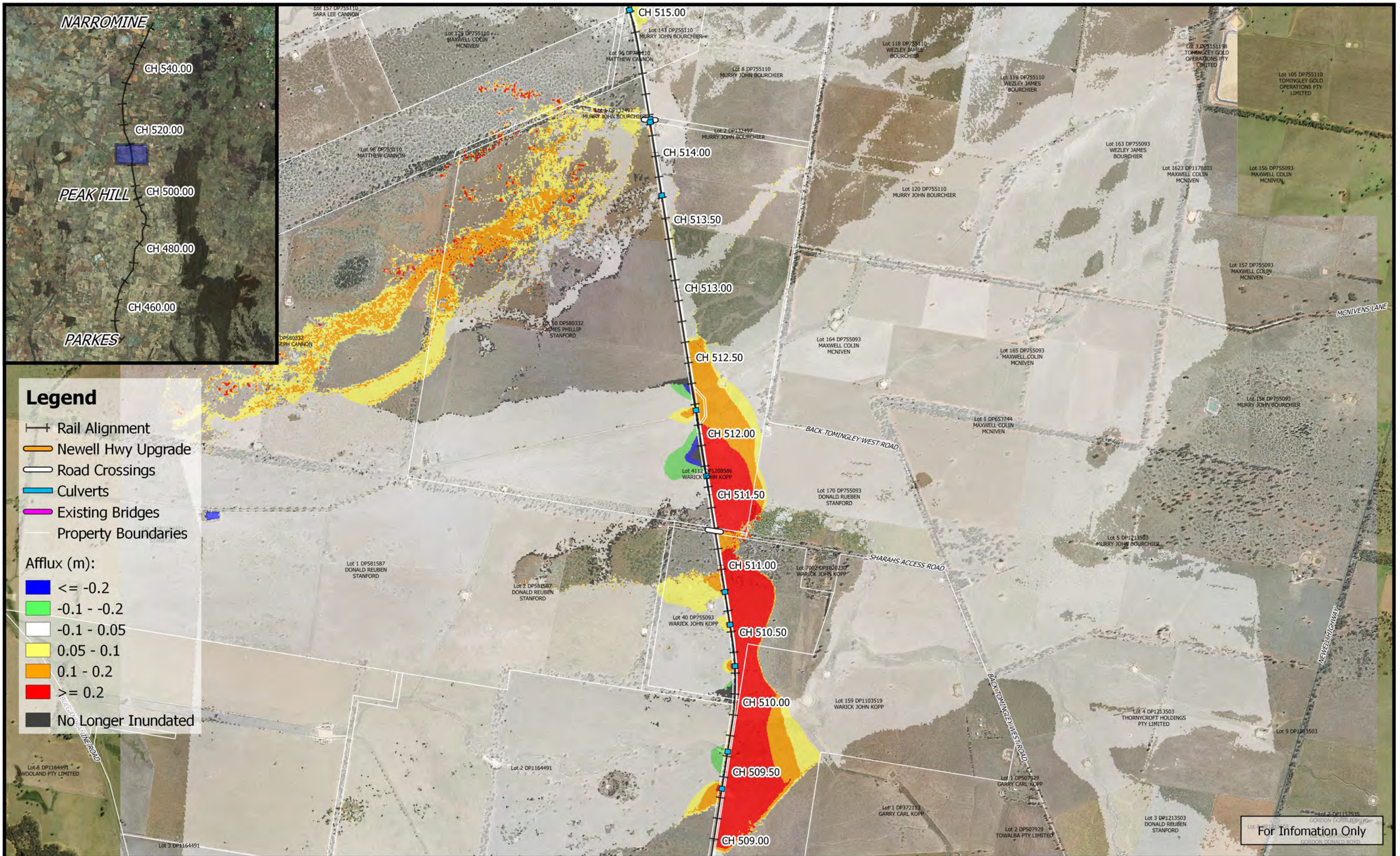
Afflux (m):

- ≤ -0.2
- 0.1 - -0.2
- 0.1 - 0.05
- 0.05 - 0.1
- 0.1 - 0.2
- ≥ 0.2
- No Longer Inundated

For Information Only

	 1:25,000		Date: 15/10/2018	<p style="margin: 0;">Inland Rail - Parkes to Narromine</p> <p style="margin: 0;">IFC - Cross Drainage Flood Impact Assessment Results</p>
	Coordinate system: GDA 1994 MGA Zone 55 Aerial Source: NSW Six Map Scale ratio correct when printed at A3		Rev: A - For Information Only	
		Prepared By: YeohM		

E:\12d\Synergy\2\IR P2\N_1\01 WPI\Flooding and Drainage\GIS Mapping\Individual Property Maps\Mapping_Full_Project.ags - 2.18.21



Legend

- +— Rail Alignment
- Newell Hwy Upgrade
- Road Crossings
- Culverts
- Existing Bridges
- Property Boundaries

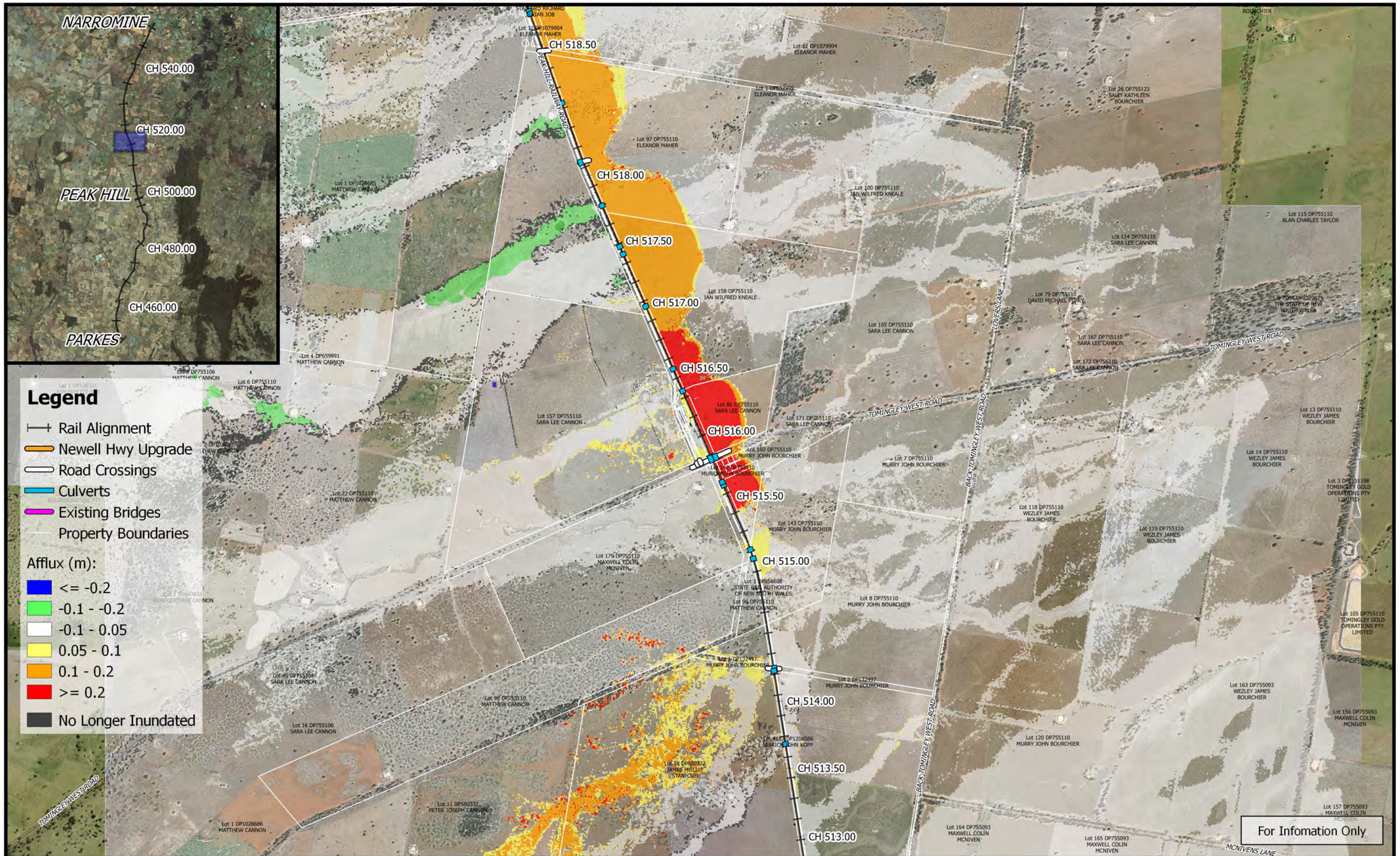
Afflux (m):

- Blue: ≤ -0.2
- Green: $-0.1 - -0.2$
- White: $-0.1 - 0.05$
- Yellow: $0.05 - 0.1$
- Orange: $0.1 - 0.2$
- Red: ≥ 0.2
- Grey: No Longer Inundated

For Information Only

	<p>1:25,000</p>		Date: 15/10/2018	<p>Inland Rail - Parkes to Narromine IFC - Cross Drainage Flood Impact Assessment Results</p> <p>Figure DE1CCA16 <i>1% AEP Climate Change Flood Afflux - CH 512.00</i></p>
	Coordinate system: GDA 1994 MGA Zone 55 Aerial Source: NSW Six Map Scale ratio correct when printed at A3		Rev: A - For Information Only	
	Prepared By: YeohM			

E:\12dsynergy\2\IR_P2N_1\01 WIP\Flooding and Drainage\GIS Mapping\Individual Property Maps\Mapping_Full_Project.gis - 2.18.21



Legend

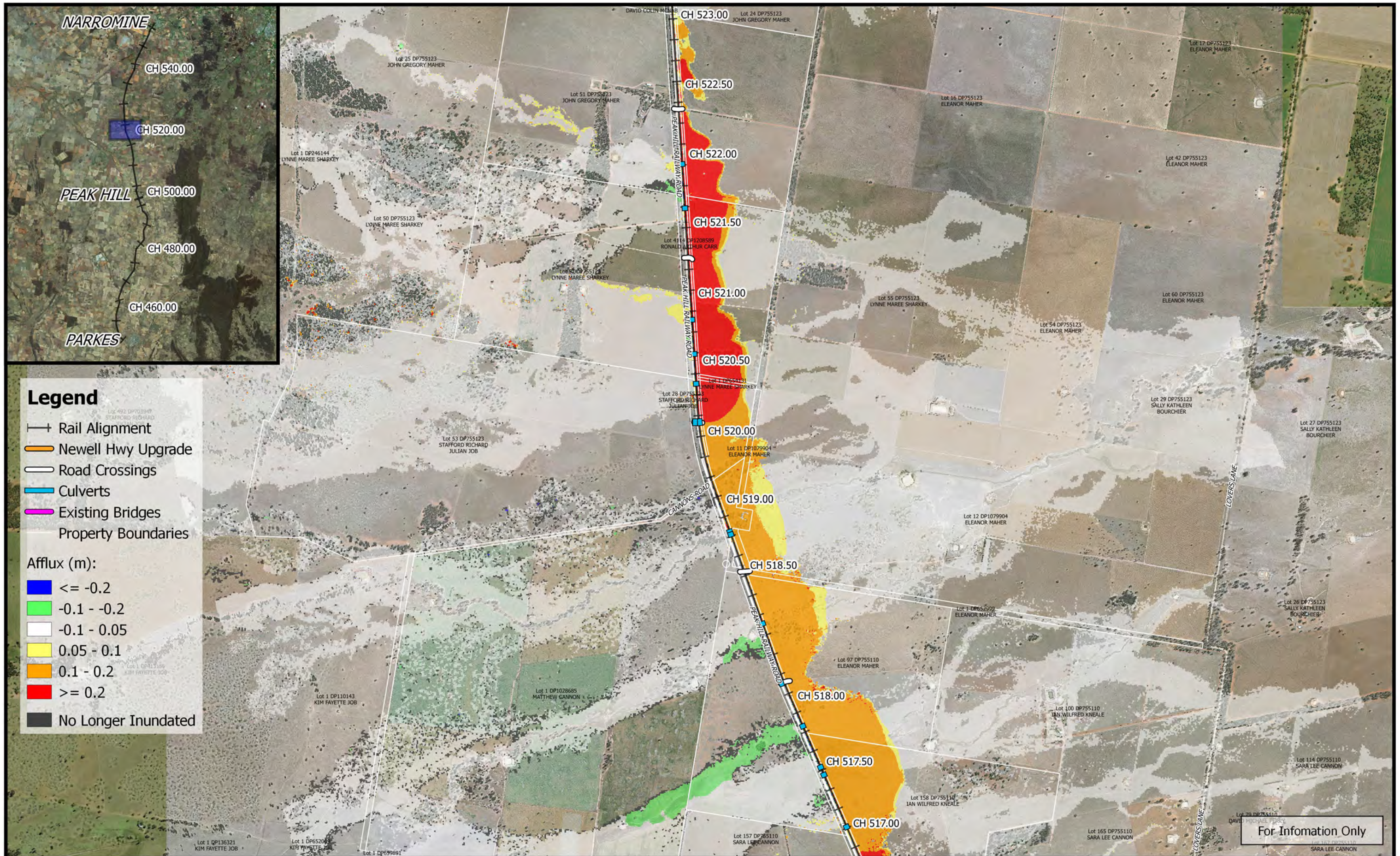
- +— Rail Alignment
- Newell Hwy Upgrade
- Road Crossings
- Culverts
- Existing Bridges
- Property Boundaries

Afflux (m):

- Blue: ≤ -0.2
- Green: $-0.1 - -0.2$
- White: $-0.1 - 0.05$
- Yellow: $0.05 - 0.1$
- Orange: $0.1 - 0.2$
- Red: ≥ 0.2
- Grey: No Longer Inundated

For Information Only

	 1:25,000	 	Date: 15/10/2018	Inland Rail - Parkes to Narromine IFC - Cross Drainage Flood Impact Assessment Results
	Coordinate system: GDA 1994 MGA Zone 55 Aerial Source: NSW Six Map Scale ratio correct when printed at A3		Rev: A - For Information Only	
			Prepared By: YeohM	



Legend

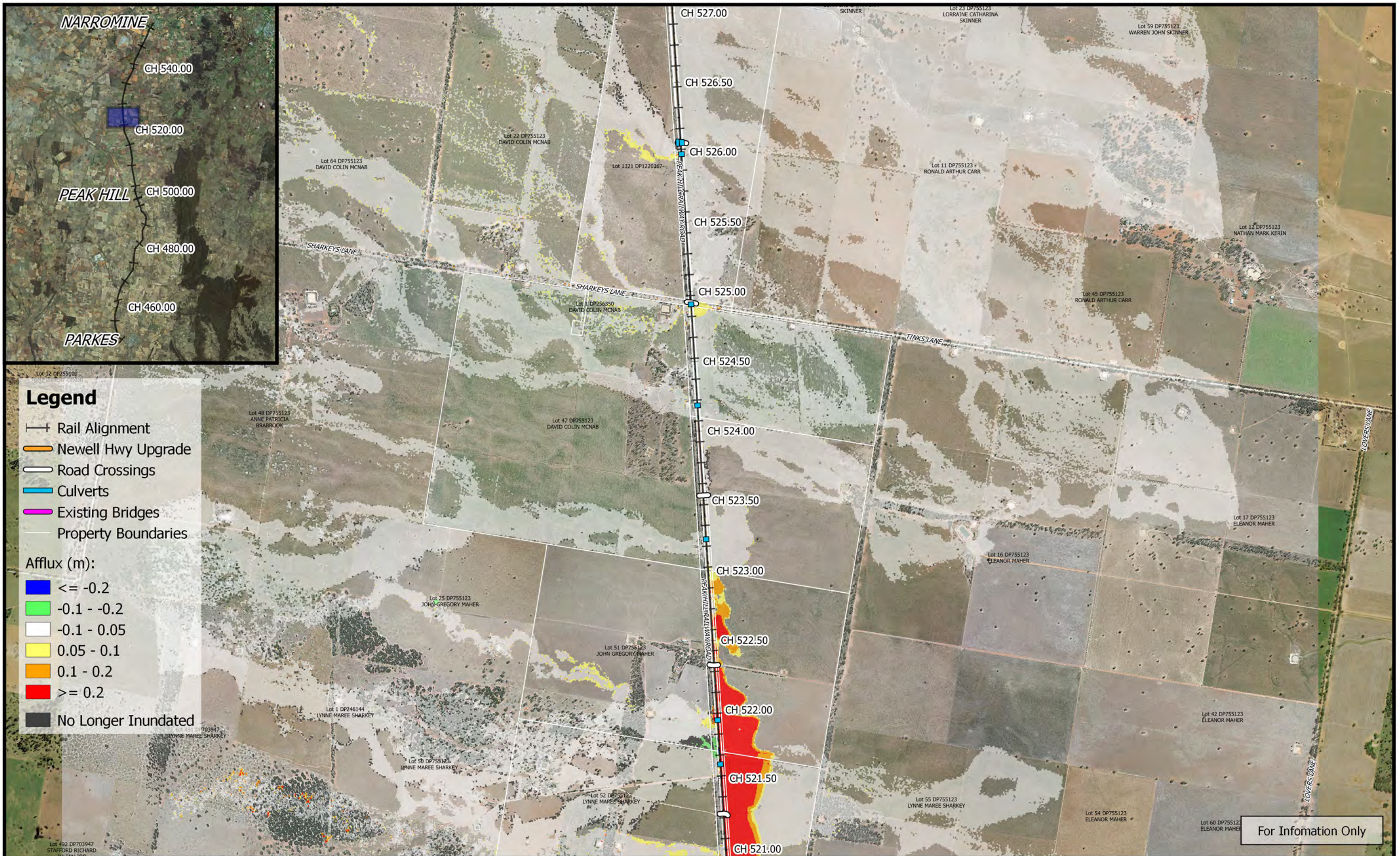
- Rail Alignment
- Newell Hwy Upgrade
- Road Crossings
- Culverts
- Existing Bridges
- Property Boundaries

Afflux (m):

- <= -0.2
- 0.1 - -0.2
- 0.1 - 0.05
- 0.05 - 0.1
- 0.1 - 0.2
- >= 0.2
- No Longer Inundated

For Information Only

	<p>1:25,000</p>		Date: 15/10/2018	<p>Inland Rail - Parkes to Narromine IFC - Cross Drainage Flood Impact Assessment Results</p>
	Coordinate system: GDA 1994 MGA Zone 55 Aerial Source: NSW Six Map Scale ratio correct when printed at A3		Rev: A - For Information Only	
			Prepared By: YeohM	



Legend

- Rail Alignment
- Newell Hwy Upgrade
- Road Crossings
- Culverts
- Existing Bridges
- Property Boundaries

Afflux (m):

- ≤ -0.2
- 0.1 - -0.2
- 0.1 - 0.05
- 0.05 - 0.1
- 0.1 - 0.2
- ≥ 0.2
- No Longer Inundated

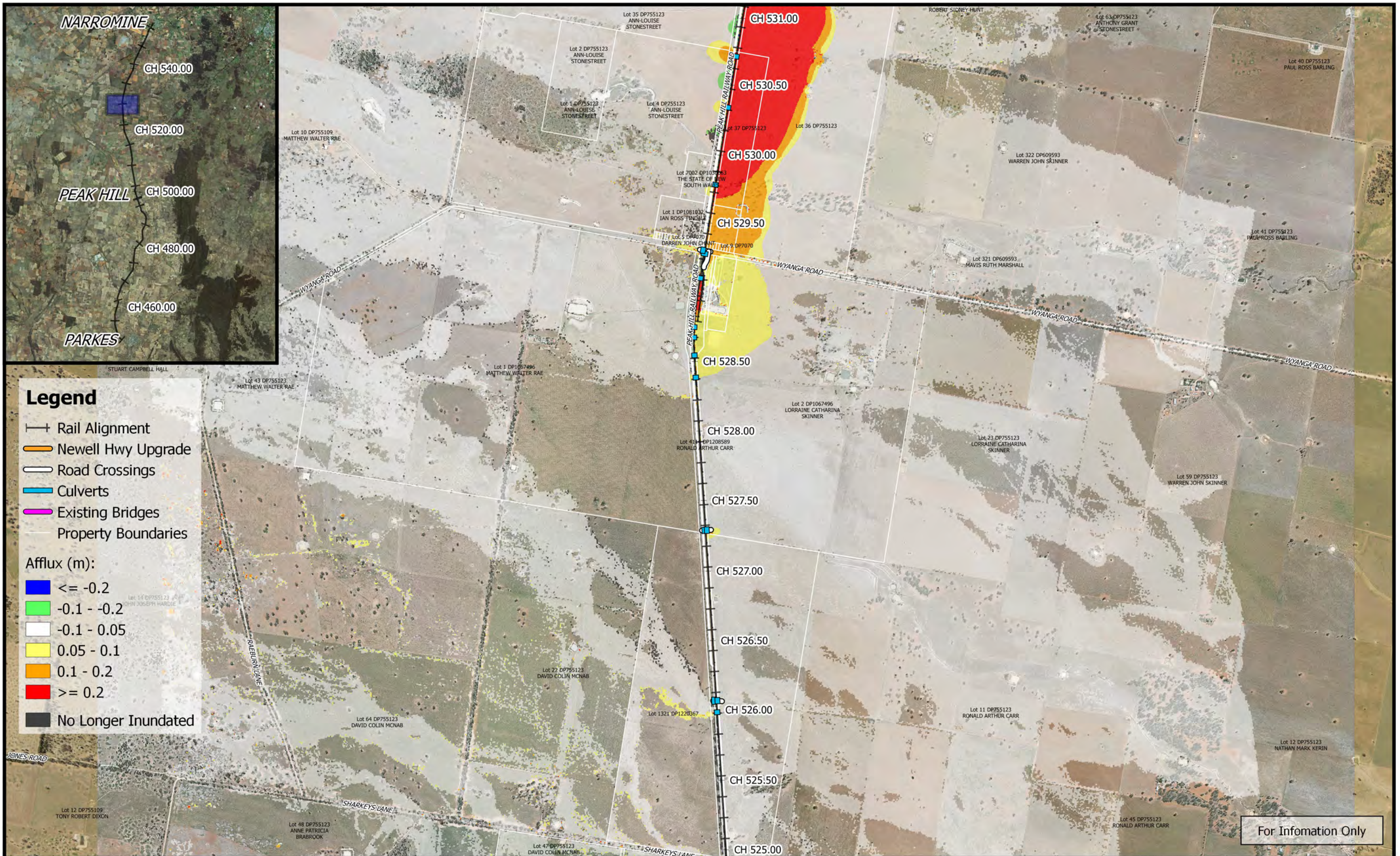
Inland Rail - Parkes to Narromine
IFC - Cross Drainage Flood Impact Assessment Results

Figure DE1CCA19
1% AEP Climate Change Flood Afflux - CH 525.00

Date: 15/10/2018
Rev: A - For Information Only
Prepared By: YeohM



0 250 500 750 1000 m
1:25,000
Coordinate system: GDA 1994 MGA Zone 55
Aerial Source: NSW Six Map
Scale ratio correct when printed at A3



Legend

- Rail Alignment
- Newell Hwy Upgrade
- Road Crossings
- Culverts
- Existing Bridges
- Property Boundaries

- Afflux (m):
- <= -0.2
 - 0.1 - -0.2
 - 0.1 - 0.05
 - 0.05 - 0.1
 - 0.1 - 0.2
 - >= 0.2
 - No Longer Inundated

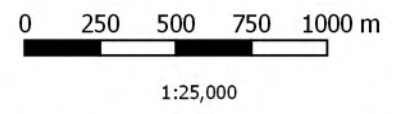
Date: 15/10/2018

Rev: A - For Information Only

Prepared By: YeohM

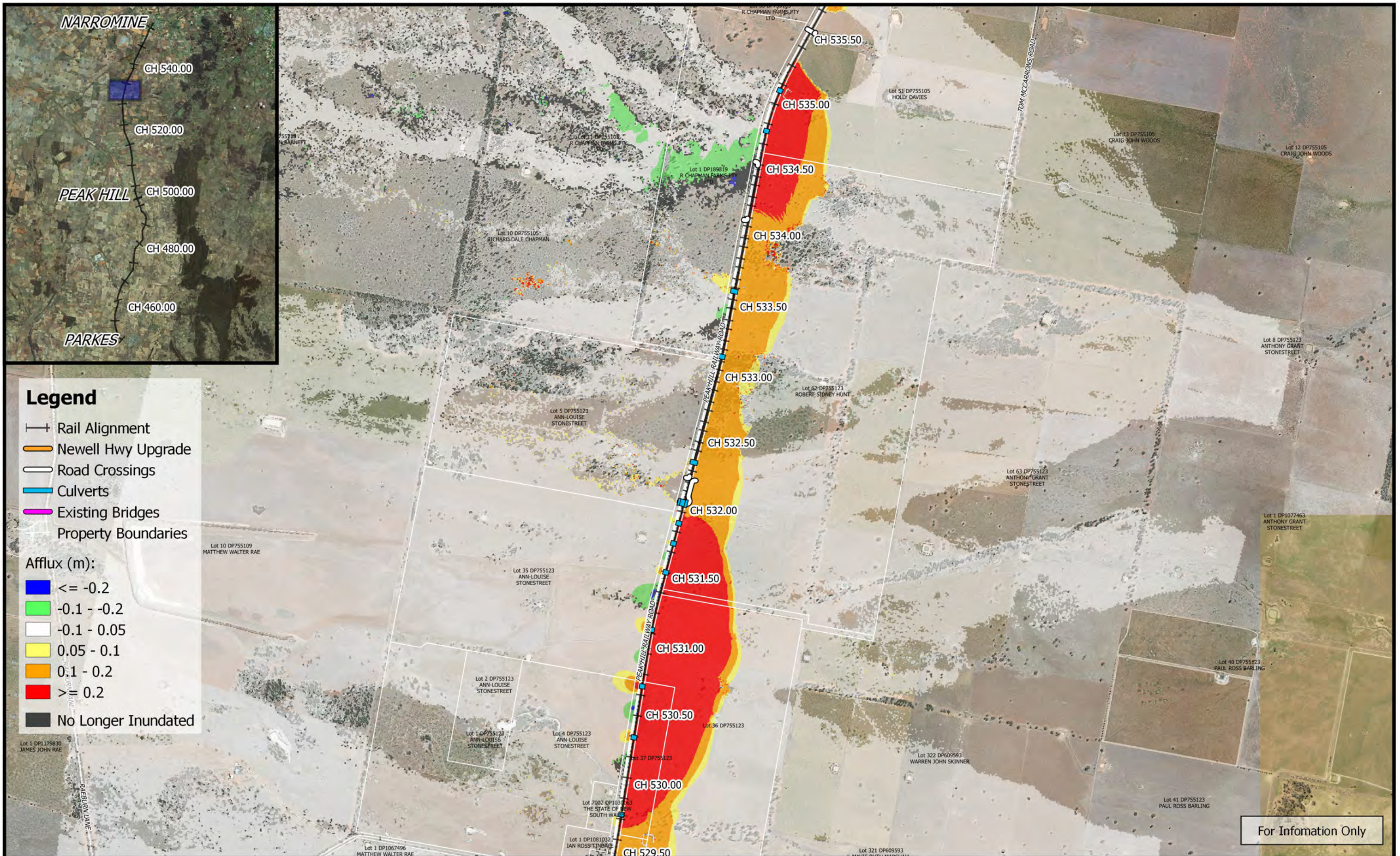
Inland Rail - Parkes to Narromine
IFC - Cross Drainage Flood Impact Assessment Results

Figure DE1CCA20
1% AEP Climate Change Flood Afflux - CH 530.00


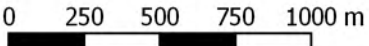




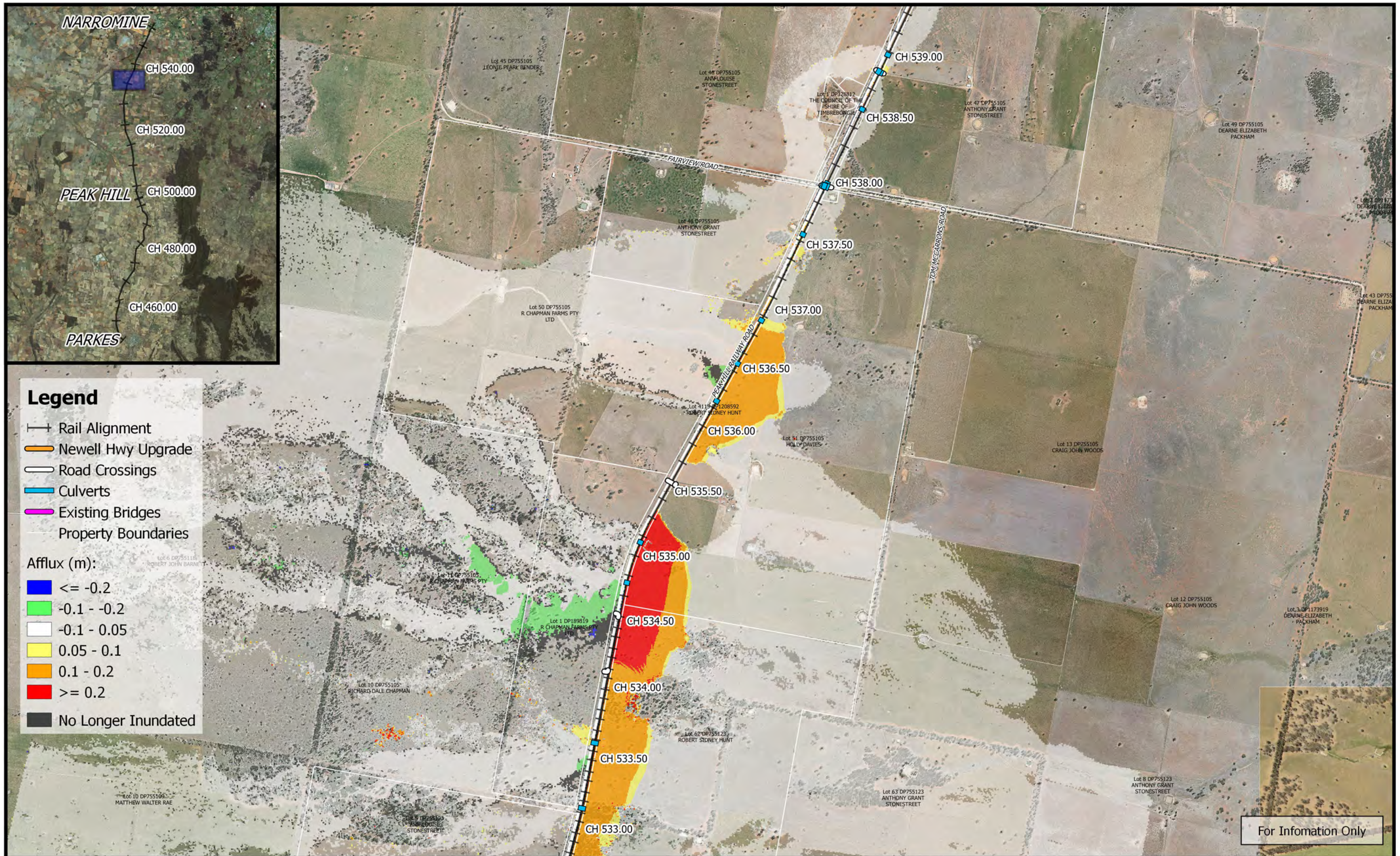
Coordinate system: GDA 1994 MGA Zone 55
Aerial Source: NSW Six Map
Scale ratio correct when printed at A3





For Information Only

	 0 250 500 750 1000 m 1:25,000	 	Date: 15/10/2018	Inland Rail - Parkes to Narromine IFC - Cross Drainage Flood Impact Assessment Results Figure DE1CCA21 <i>1% AEP Climate Change Flood Afflux - CH 533.00</i>	
	Coordinate system: GDA 1994 MGA Zone 55 Aerial Source: NSW Six Map Scale ratio correct when printed at A3		Rev: A - For Information Only		
			Prepared By: YeohM		



Legend

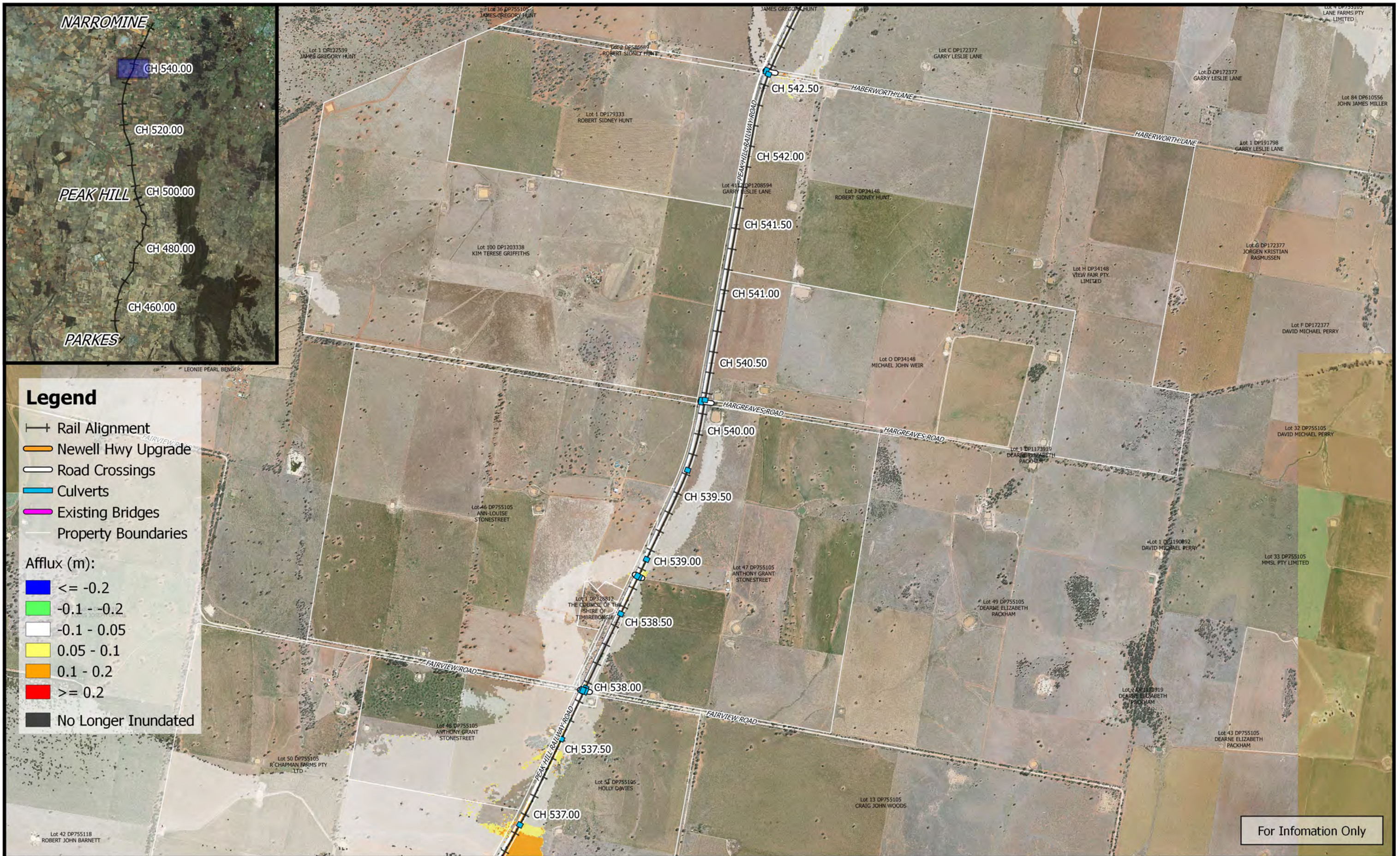
- Rail Alignment
- Newell Hwy Upgrade
- Road Crossings
- Culverts
- Existing Bridges
- Property Boundaries

Afflux (m):

- ≤ -0.2
- $-0.1 - -0.2$
- $-0.1 - 0.05$
- $0.05 - 0.1$
- $0.1 - 0.2$
- ≥ 0.2
- No Longer Inundated

For Information Only

	<p>1:25,000</p>		Date: 15/10/2018	<p>Inland Rail - Parkes to Narromine IFC - Cross Drainage Flood Impact Assessment Results</p> <p>Figure DE1CCA22 <i>1% AEP Climate Change Flood Afflux - CH 535.00</i></p>	
	Coordinate system: GDA 1994 MGA Zone 55 Aerial Source: NSW Six Map Scale ratio correct when printed at A3		Rev: A - For Information Only		
			Prepared By: YeohM		



Legend

- Rail Alignment
- Newell Hwy Upgrade
- Road Crossings
- Culverts
- Existing Bridges
- Property Boundaries

Afflux (m):

- <= -0.2
- 0.1 - -0.2
- 0.1 - 0.05
- 0.05 - 0.1
- 0.1 - 0.2
- >= 0.2
- No Longer Inundated

For Information Only

	<p>0 250 500 750 1000 m</p> <p>1:25,000</p>	<p>M MOTT MACDONALD</p>	Date: 15/10/2018	<p>Inland Rail - Parkes to Narromine IFC - Cross Drainage Flood Impact Assessment Results</p> <p>Figure DE1CCA23 <i>1% AEP Climate Change Flood Afflux - CH 540.00</i></p>	
	Coordinate system: GDA 1994 MGA Zone 55 Aerial Source: NSW Six Map Scale ratio correct when printed at A3		Rev: A - For Information Only		
	Prepared By: YeohM				



Legend

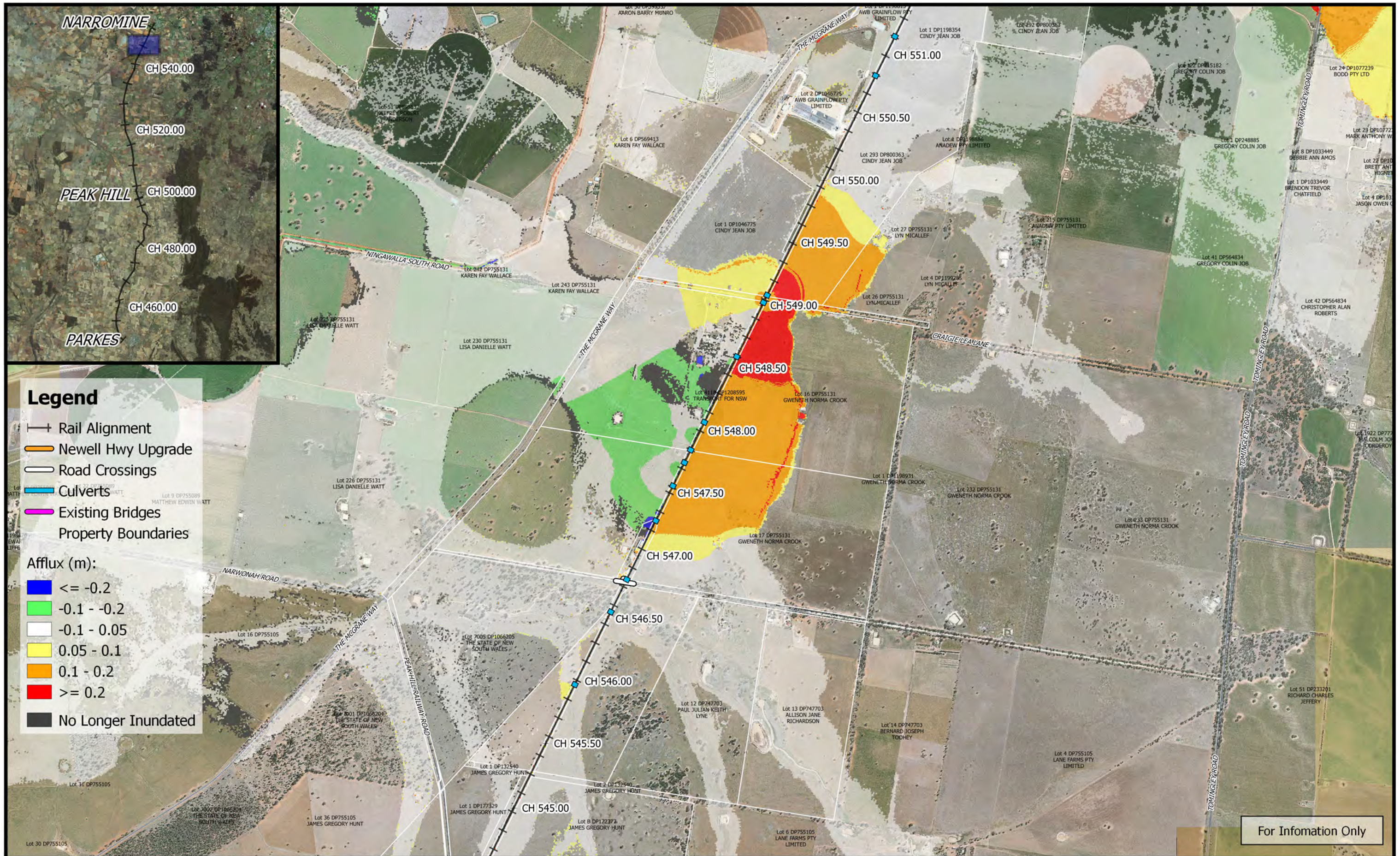
- Rail Alignment
- Newell Hwy Upgrade
- Road Crossings
- Culverts
- Existing Bridges
- Property Boundaries

Afflux (m):

- ≤ -0.2
- $-0.1 - -0.2$
- $-0.1 - 0.05$
- $0.05 - 0.1$
- $0.1 - 0.2$
- ≥ 0.2
- No Longer Inundated

For Information Only

	<p>1:25,000</p> <p>Coordinate system: GDA 1994 MGA Zone 55 Aerial Source: NSW Six Map Scale ratio correct when printed at A3</p>		<p>Date: 15/10/2018</p> <p>Rev: A - For Information Only</p> <p>Prepared By: YeohM</p>	<p>Inland Rail - Parkes to Narromine IFC - Cross Drainage Flood Impact Assessment Results</p> <p>Figure DE1CCA24 <i>1% AEP Climate Change Flood Afflux - CH 545.00</i></p>
	<p><small>E:\122\Synergy\2\IR_P2N_1\01 WIP\Flooding and Drainage\GIS Mapping\Individual Property Maps\Mapping_Full_Project.ags - 2.18.21</small></p>			



Legend

- Rail Alignment
- Newell Hwy Upgrade
- Road Crossings
- Culverts
- Existing Bridges
- Property Boundaries

Afflux (m):

- ≤ -0.2
- 0.1 - -0.2
- 0.1 - 0.05
- 0.05 - 0.1
- 0.1 - 0.2
- ≥ 0.2
- No Longer Inundated

For Information Only

	<p>0 250 500 750 1000 m</p>		Date: 15/10/2018	<p>Inland Rail - Parkes to Narromine IFC - Cross Drainage Flood Impact Assessment Results</p> <p>Figure DE1CCA25 <i>1% AEP Climate Change Flood Afflux - CH 550.00</i></p>
	1:25,000		Rev: A - For Information Only	
	<p>Coordinate system: GDA 1994 MGA Zone 55 Aerial Source: NSW Six Map Scale ratio correct when printed at A3</p>		Prepared By: YeohM	

E:\12d\Synergy\2\IR P2N_1\01 WIP\Flooding and Drainage\GIS Mapping\Individual Property Maps\Mapping_Full_Project.gis - 2.18.21