

Appendix B

Design Conditions Flood Maps

B01 – Flood Level Change (Afflux) 18% AEP

B02 – Flood Level Change (Afflux) 5% AEP

B03 – Flood Level Change (Afflux) 2% AEP

B04 – Flood Level Change (Afflux) 0.05% AEP

B05 – Flood Velocity Change 18% AEP

B06 – Flood Velocity Change 5% AEP

B07 – Flood Velocity Change 2% AEP

B08 – Flood Velocity Change 0.05% AEP

B09 – Flood Duration Change 18% AEP

B10 – Flood Duration Change 5% AEP



B11 – Flood Duration Change 2% AEP

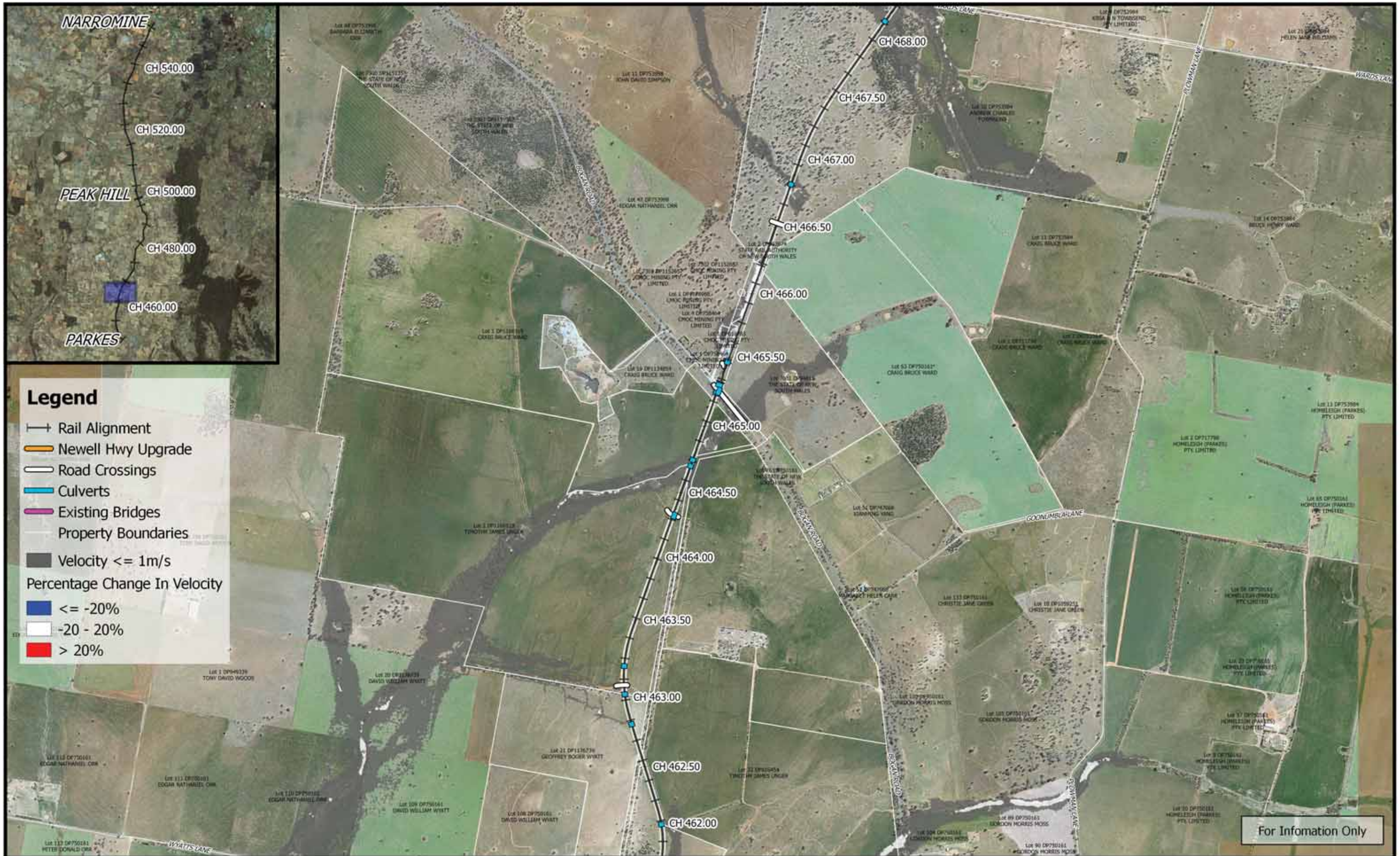
B12 – Flood Duration Change 0.05% AEP





For Information Only

	<p>0 250 500 750 1000 m</p> <p>1:25,000</p> <p>Coordinate system: GDA 1994 MGA Zone 55 Inset Aerial Source: NSW Six Map Scale ratio correct when printed at A3</p>		Date: 22/3/2019	<p>Inland Rail - Parkes to Narromine IFC - Cross Drainage Flood Impact Assessment Results</p> <p>Figure DE5VC1 5% AEP Percentage Change In Velocity - CH 450.00</p>
			Rev: B - For Information Only	
Prepared By: YeohM				



Legend

- Rail Alignment
- Newell Hwy Upgrade
- Road Crossings
- Culverts
- Existing Bridges
- Property Boundaries
- Velocity $\leq 1\text{m/s}$

Percentage Change In Velocity


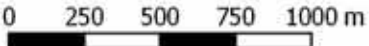


- $\leq -20\%$
- $-20 - 20\%$
- $> 20\%$

For Information Only


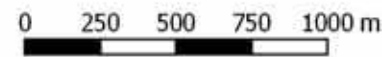


	<p>1:25,000</p>		Date: 22/3/2019	<p>Inland Rail - Parkes to Narromine IFC - Cross Drainage Flood Impact Assessment Results</p> <p>Figure DE5VC4 5% AEP Percentage Change In Velocity - CH 465.00</p>	
	Coordinate system: GDA 1994 MGA Zone 55 Inset Aerial Source: NSW Six Map Scale ratio correct when printed at A3		Rev: B - For Information Only		
			Prepared By: YeohM		



For Information Only

	 1:25,000	 	Date: 22/3/2019	Inland Rail - Parkes to Narromine IFC - Cross Drainage Flood Impact Assessment Results Figure DE5VC6 <i>5% AEP Percentage Change In Velocity - CH 472.00</i>	
	Coordinate system: GDA 1994 MGA Zone 55 Inset Aerial Source: NSW Six Map Scale ratio correct when printed at A3		Rev: B - For Information Only		
			Prepared By: YeohM		

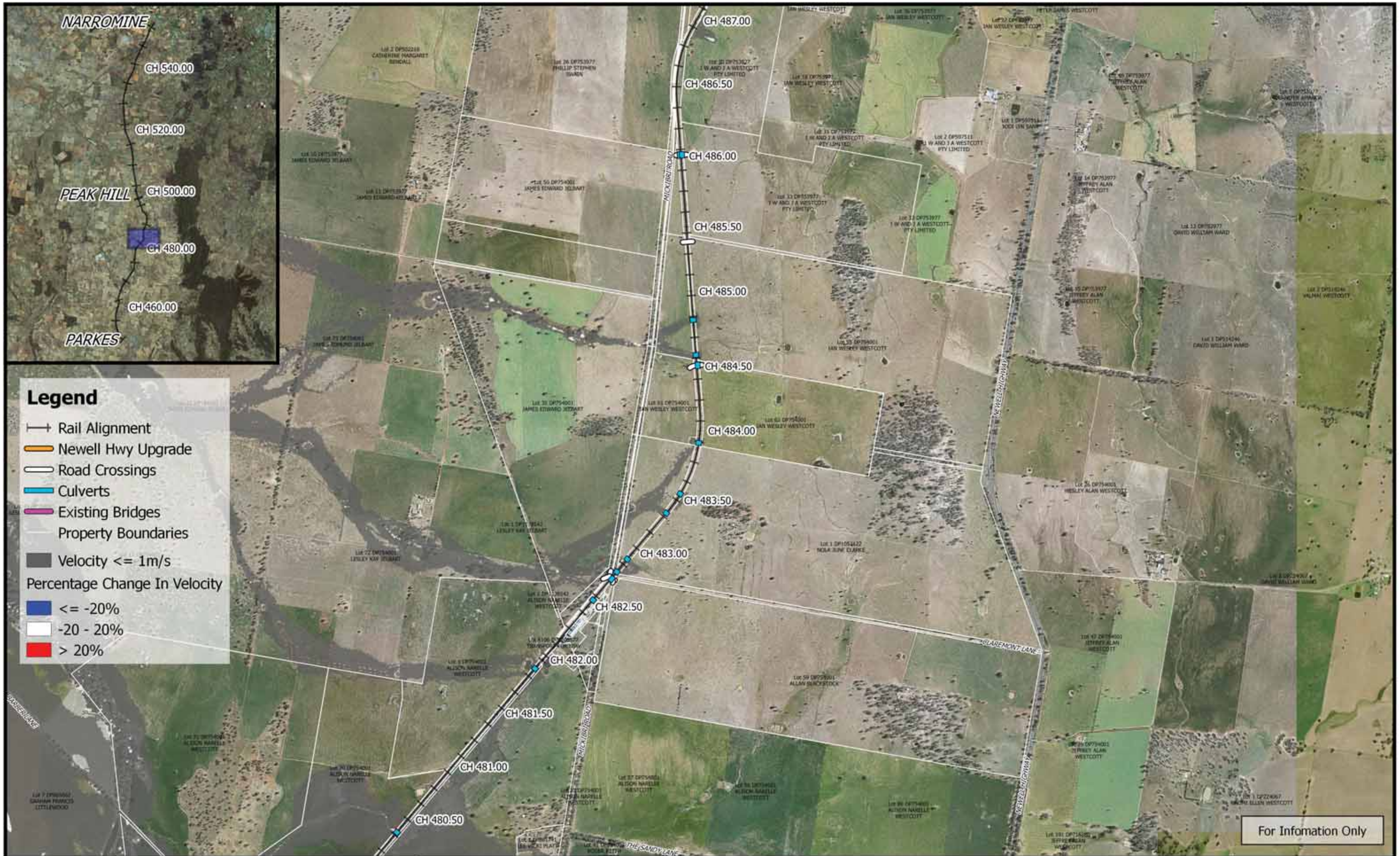


	 1:25,000	 	Date: 22/3/2019	Inland Rail - Parkes to Narromine IFC - Cross Drainage Flood Impact Assessment Results Figure DE5VC7 5% AEP Percentage Change In Velocity - CH 475.00
	Coordinate system: GDA 1994 MGA Zone 55 Inset Aerial Source: NSW Six Map Scale ratio correct when printed at A3		Rev: B - For Information Only	
	Prepared By: YeohM			

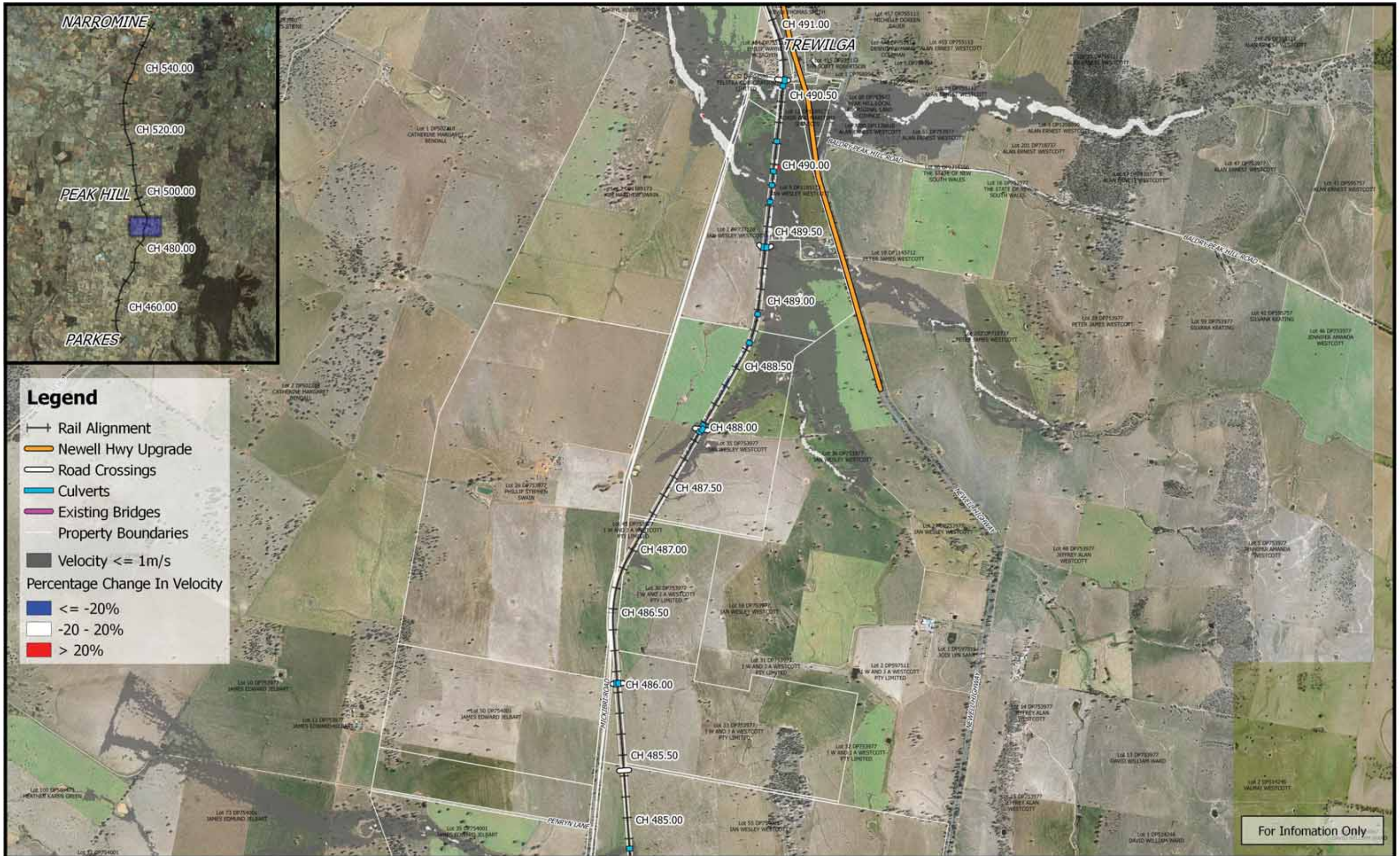


For Information Only

	 1:25,000		Date: 22/3/2019	Inland Rail - Parkes to Narromine IFC - Cross Drainage Flood Impact Assessment Results Figure DE5VC8 5% AEP Percentage Change In Velocity - CH 480.00
	Coordinate system: GDA 1994 MGA Zone 55 Inset Aerial Source: NSW Six Map Scale ratio correct when printed at A3		Rev: B - For Information Only	
	Prepared By: YeohM			



	 1:25,000		Date: 22/3/2019	Inland Rail - Parkes to Narromine IFC - Cross Drainage Flood Impact Assessment Results Figure DE5VC9 5% AEP Percentage Change In Velocity - CH 485.00
	Coordinate system: GDA 1994 MGA Zone 55 Inset Aerial Source: NSW Six Map Scale ratio correct when printed at A3		Rev: B - For Information Only	
	Prepared By: YeohM			






Legend

- Rail Alignment
- Newell Hwy Upgrade
- Road Crossings
- Culverts
- Existing Bridges
- Property Boundaries
- Velocity $\leq 1\text{m/s}$
- Percentage Change In Velocity**
- $\leq -20\%$
- $-20 - 20\%$
- $> 20\%$

For Information Only

	<p>1:25,000</p>		Date: 22/3/2019	<p>Inland Rail - Parkes to Narromine IFC - Cross Drainage Flood Impact Assessment Results</p> <p>Figure DE5VC10 5% AEP Percentage Change In Velocity - CH 490.00</p>
	Coordinate system: GDA 1994 MGA Zone 55 Inset Aerial Source: NSW Six Map Scale ratio correct when printed at A3		Rev: B - For Information Only	

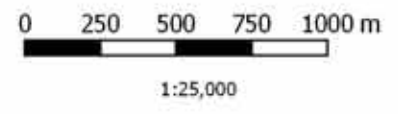


	0 250 500 750 1000 m 1:25,000 Coordinate system: GDA 1994 MGA Zone 55 Inset Aerial Source: NSW Six Map Scale ratio correct when printed at A3	 	Date: 22/3/2019 Rev: B - For Information Only Prepared By: YeohM	Inland Rail - Parkes to Narromine IFC - Cross Drainage Flood Impact Assessment Results Figure DE5VC11 5% AEP Percentage Change In Velocity - CH 492.00
---	---	--	--	---



Legend

- Rail Alignment
- Newell Hwy Upgrade
- Road Crossings
- Culverts
- Existing Bridges
- Property Boundaries
- Velocity <= 1m/s
- Percentage Change In Velocity**
- <= -20%
- 20 - 20%
- > 20%



1:25,000

Coordinate system: GDA 1994 MGA Zone 55
 Inset Aerial Source: NSW Six Map
 Scale ratio correct when printed at A3



Date: 22/3/2019
 Rev: B - For Information Only
 Prepared By: YeohM

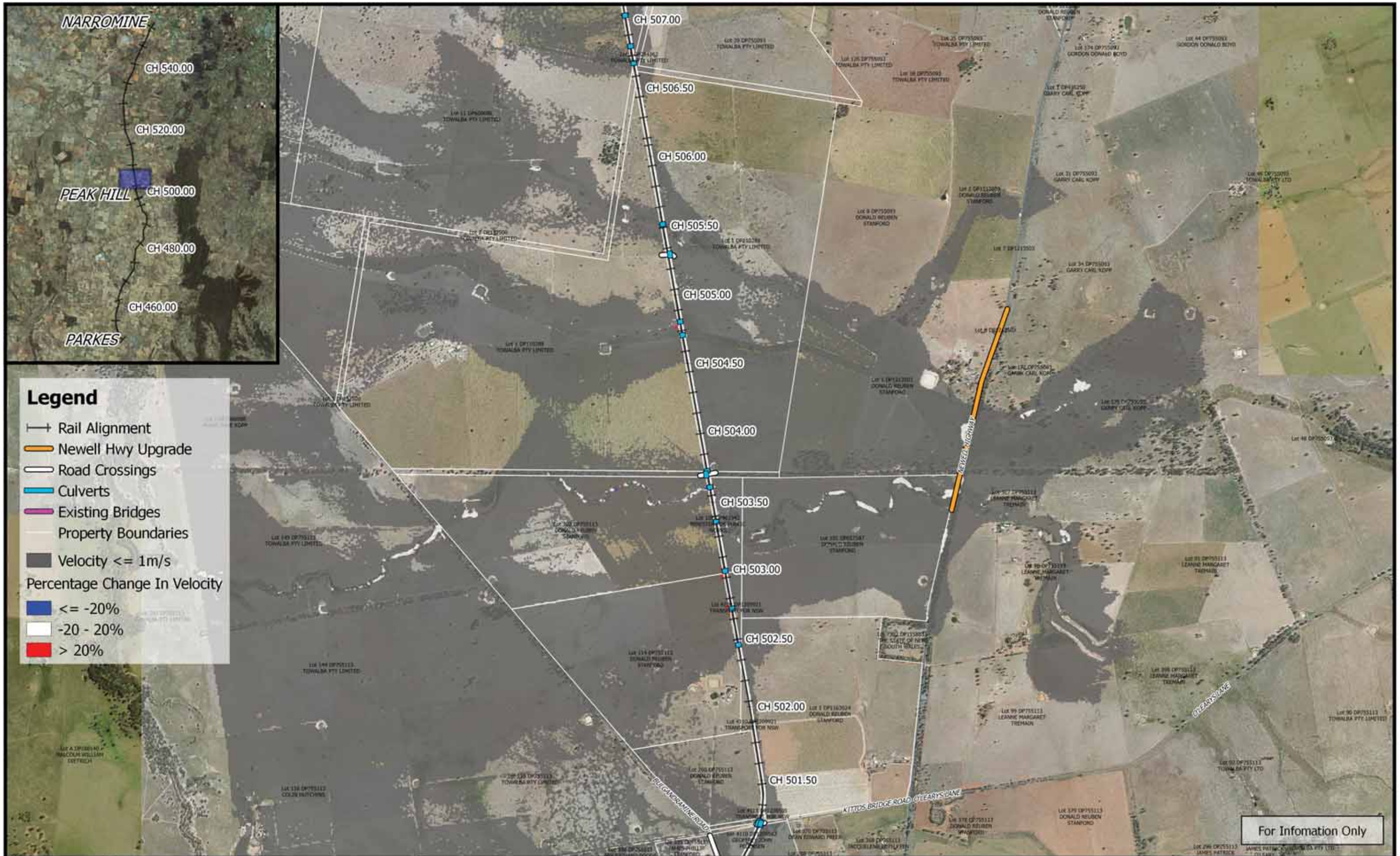
Inland Rail - Parkes to Narromine
 IFC - Cross Drainage Flood Impact Assessment Results

Figure DE5VC12
 5% AEP Percentage Change In Velocity - CH 495.00



For Information Only

	<p>1:25,000</p> <p>Coordinate system: GDA 1994 MGA Zone 55 Inset Aerial Source: NSW Six Map Scale ratio correct when printed at A3</p>		Date: 22/3/2019	<p>Inland Rail - Parkes to Narromine IFC - Cross Drainage Flood Impact Assessment Results</p> <p>Figure DE5VC13 5% AEP Percentage Change In Velocity - CH 500.00</p>
			Rev: B - For Information Only	
			Prepared By: YeohM	



Legend

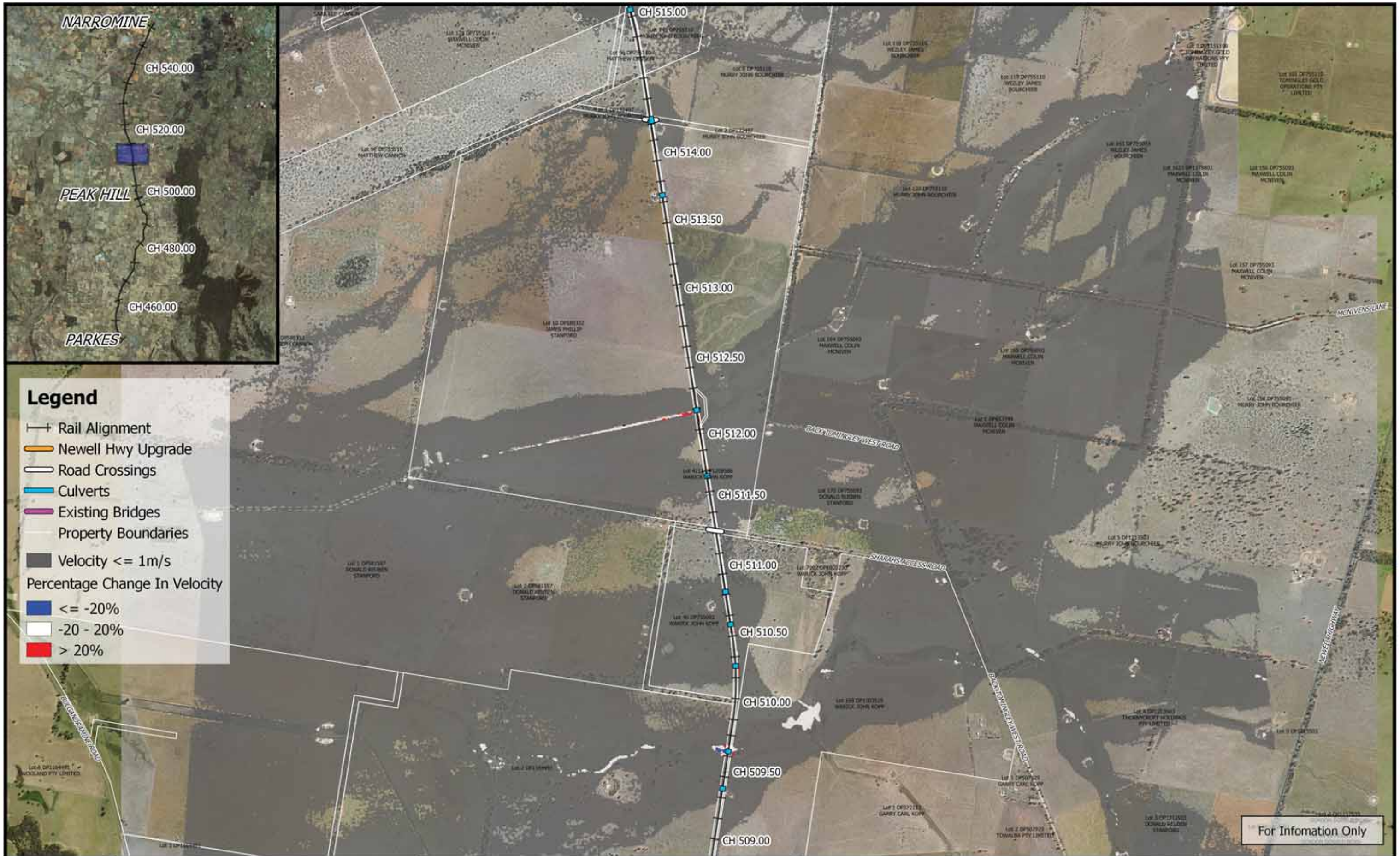
- +— Rail Alignment
- Newell Hwy Upgrade
- Road Crossings
- Culverts
- Existing Bridges
- Property Boundaries
- Velocity $\leq 1\text{m/s}$
- Percentage Change In Velocity
 - $\leq -20\%$
 - $-20 - 20\%$
 - $> 20\%$

For Information Only



	<p>0 250 500 750 1000 m</p> <p>1:25,000</p> <p>Coordinate system: GDA 1994 MGA Zone 55 Inset Aerial Source: NSW Six Map Scale ratio correct when printed at A3</p>		Date: 22/3/2019	<p>Inland Rail - Parkes to Narromine IFC - Cross Drainage Flood Impact Assessment Results</p> <p>Figure DE5VC14 5% AEP Percentage Change In Velocity - CH 505.00</p>
	Rev: B - For Information Only			
Prepared By: YeohM				



	<p>0 250 500 750 1000 m</p> <p>1:25,000</p> <p>Coordinate system: GDA 1994 MGA Zone 55 Inset Aerial Source: NSW Six Map Scale ratio correct when printed at A3</p>		Date: 22/3/2019	<p>Inland Rail - Parkes to Narromine IFC - Cross Drainage Flood Impact Assessment Results</p> <p>Figure DE5VC15 5% AEP Percentage Change In Velocity - CH 510.00</p>
			Rev: B - For Information Only	
			Prepared By: YeohM	



For Information Only

	<p>0 250 500 750 1000 m</p> <p>1:25,000</p> <p>Coordinate system: GDA 1994 MGA Zone 55 Inset Aerial Source: NSW Six Map Scale ratio correct when printed at A3</p>		Date: 22/3/2019	<p>Inland Rail - Parkes to Narromine IFC - Cross Drainage Flood Impact Assessment Results</p> <p>Figure DE5VC16 5% AEP Percentage Change In Velocity - CH 512.00</p>
			Rev: B - For Information Only	
			Prepared By: YeohM	

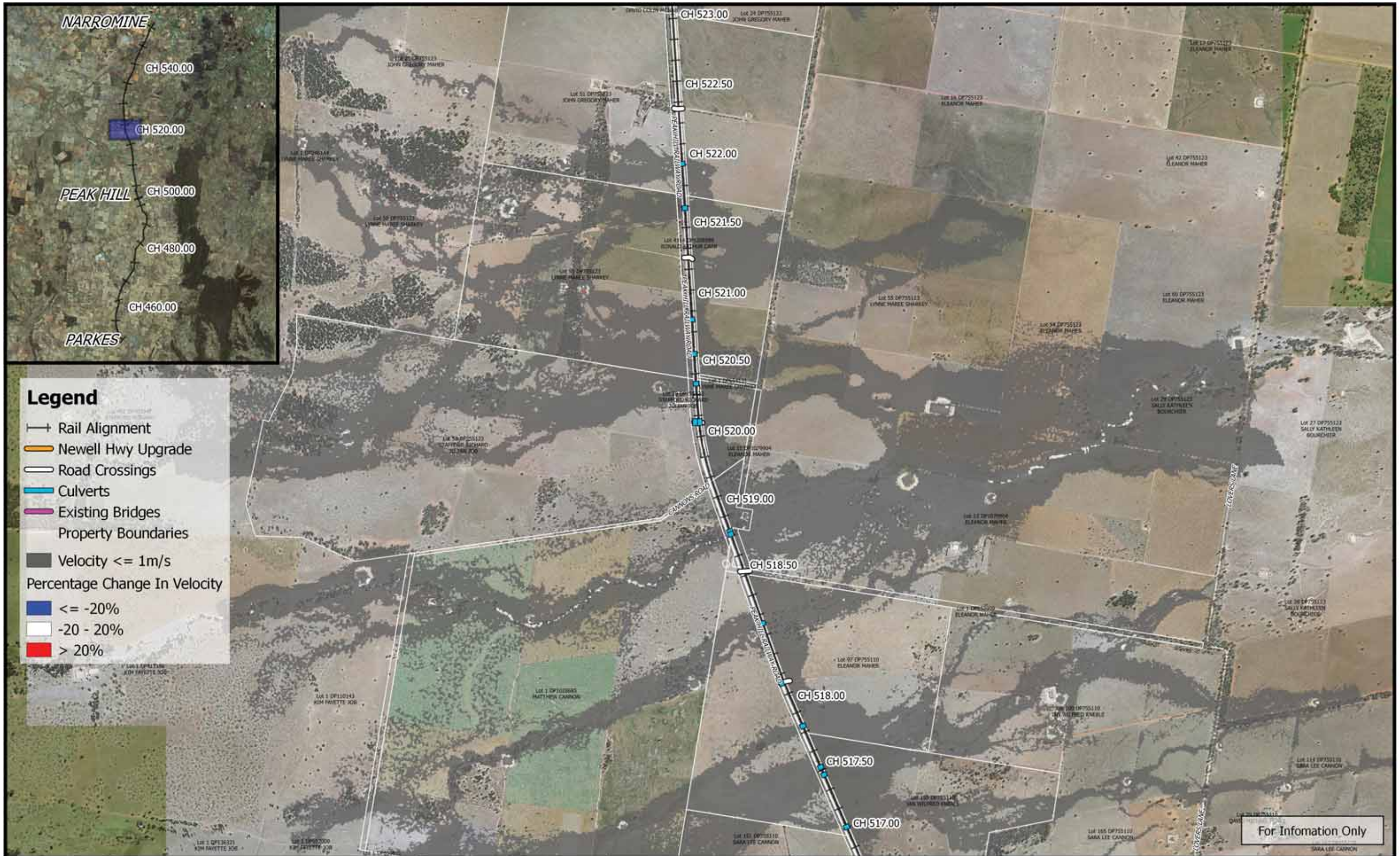


Legend

- Rail Alignment
- Newell Hwy Upgrade
- Road Crossings
- Culverts
- Existing Bridges
- Property Boundaries
- Velocity $\leq 1\text{m/s}$
- Percentage Change In Velocity
 - $\leq -20\%$
 - $-20 - 20\%$
 - $> 20\%$

For Information Only

	<p>0 250 500 750 1000 m</p> <p>1:25,000</p>		<p>Date: 22/3/2019</p>	<p>Inland Rail - Parkes to Narromine IFC - Cross Drainage Flood Impact Assessment Results</p> <p>Figure DE5VC17 5% AEP Percentage Change In Velocity - CH 515.00</p>
	<p>Coordinate system: GDA 1994 MGA Zone 55 Inset Aerial Source: NSW Six Map Scale ratio correct when printed at A3</p>		<p>Rev: B - For Information Only</p>	
	<p>Prepared By: YeohM</p>			

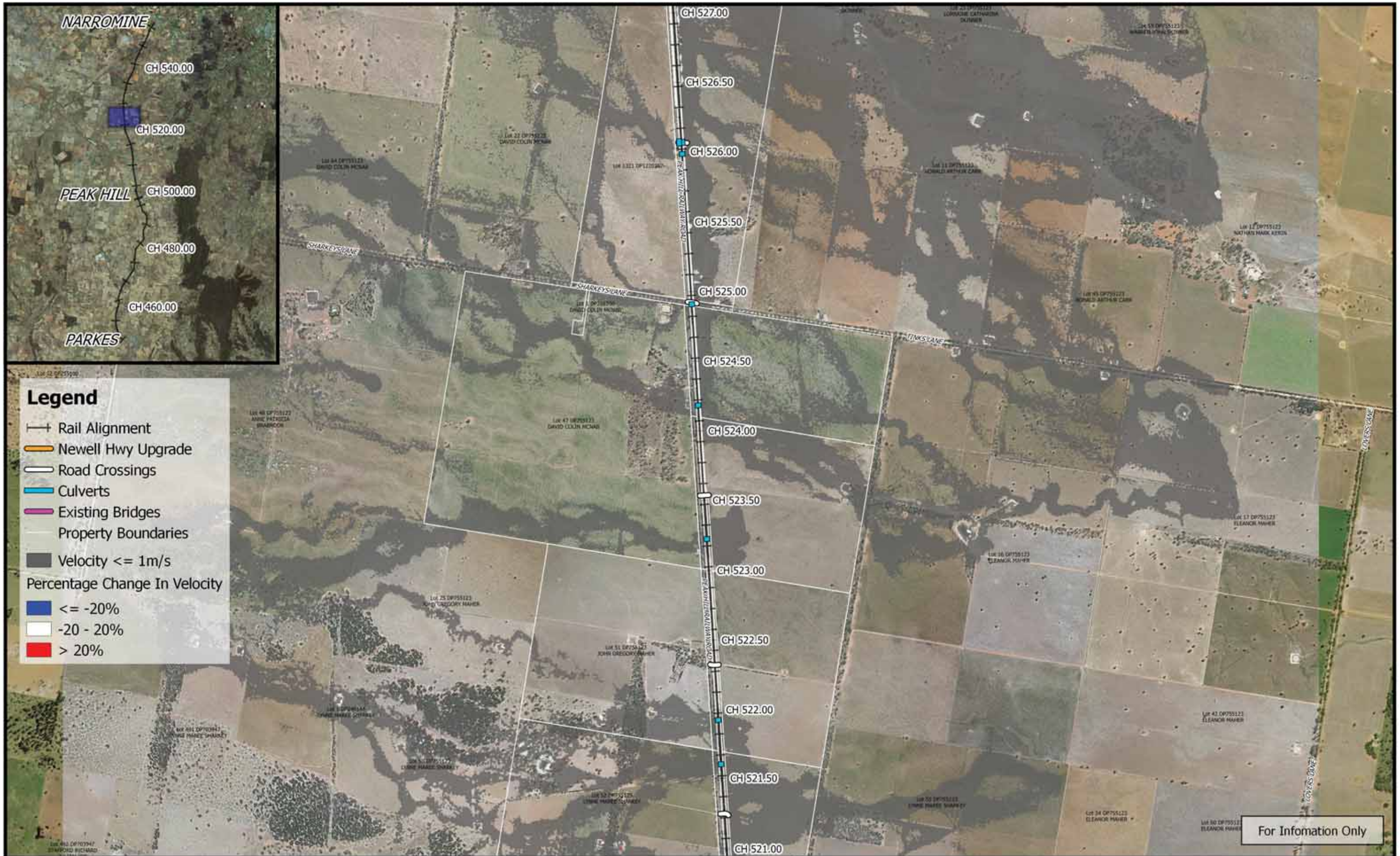


Legend

- +— Rail Alignment
- Newell Hwy Upgrade
- Road Crossings
- Culverts
- Existing Bridges
- Property Boundaries
- Velocity <= 1m/s
- Percentage Change In Velocity
- <= -20%
- -20 - 20%
- > 20%

For Information Only

	 1:25,000		Date: 22/3/2019	<p style="margin: 0;">Inland Rail - Parkes to Narromine IFC - Cross Drainage Flood Impact Assessment Results</p> <p style="margin: 0;">Figure DE5VC18 5% AEP Percentage Change In Velocity - CH 520.00</p>
	Coordinate system: GDA 1994 MGA Zone 55 Inset Aerial Source: NSW Six Map Scale ratio correct when printed at A3		Rev: B - For Information Only	



Legend

- Rail Alignment
- Newell Hwy Upgrade
- Road Crossings
- Culverts
- Existing Bridges
- Property Boundaries
- Velocity $\le 1\text{m/s}$

Percentage Change In Velocity

- $\le -20\%$
- $-20 - 20\%$
- $> 20\%$

	<p>1:25,000</p>	 	Date: 22/3/2019	<p>Inland Rail - Parkes to Narromine IFC - Cross Drainage Flood Impact Assessment Results</p> <p>Figure DE5VC19 5% AEP Percentage Change In Velocity - CH 525.00</p>	
	Coordinate system: GDA 1994 MGA Zone 55 Inset Aerial Source: NSW Six Map Scale ratio correct when printed at A3		Rev: B - For Information Only		
			Prepared By: YeohM		



Legend

- +— Rail Alignment
- Newell Hwy Upgrade
- Road Crossings
- Culverts
- Existing Bridges
- Property Boundaries
- Velocity <= 1m/s
- Percentage Change In Velocity
- <= -20%
- -20 - 20%
- > 20%

For Information Only


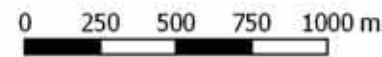


	<p>1:25,000</p>		Date: 22/3/2019	<p>Inland Rail - Parkes to Narromine IFC - Cross Drainage Flood Impact Assessment Results</p> <p>Figure DE5VC20 5% AEP Percentage Change In Velocity - CH 530.00</p>
	Coordinate system: GDA 1994 MGA Zone 55 Inset Aerial Source: NSW Six Map Scale ratio correct when printed at A3		Rev: B - For Information Only	
	Prepared By: YeohM			

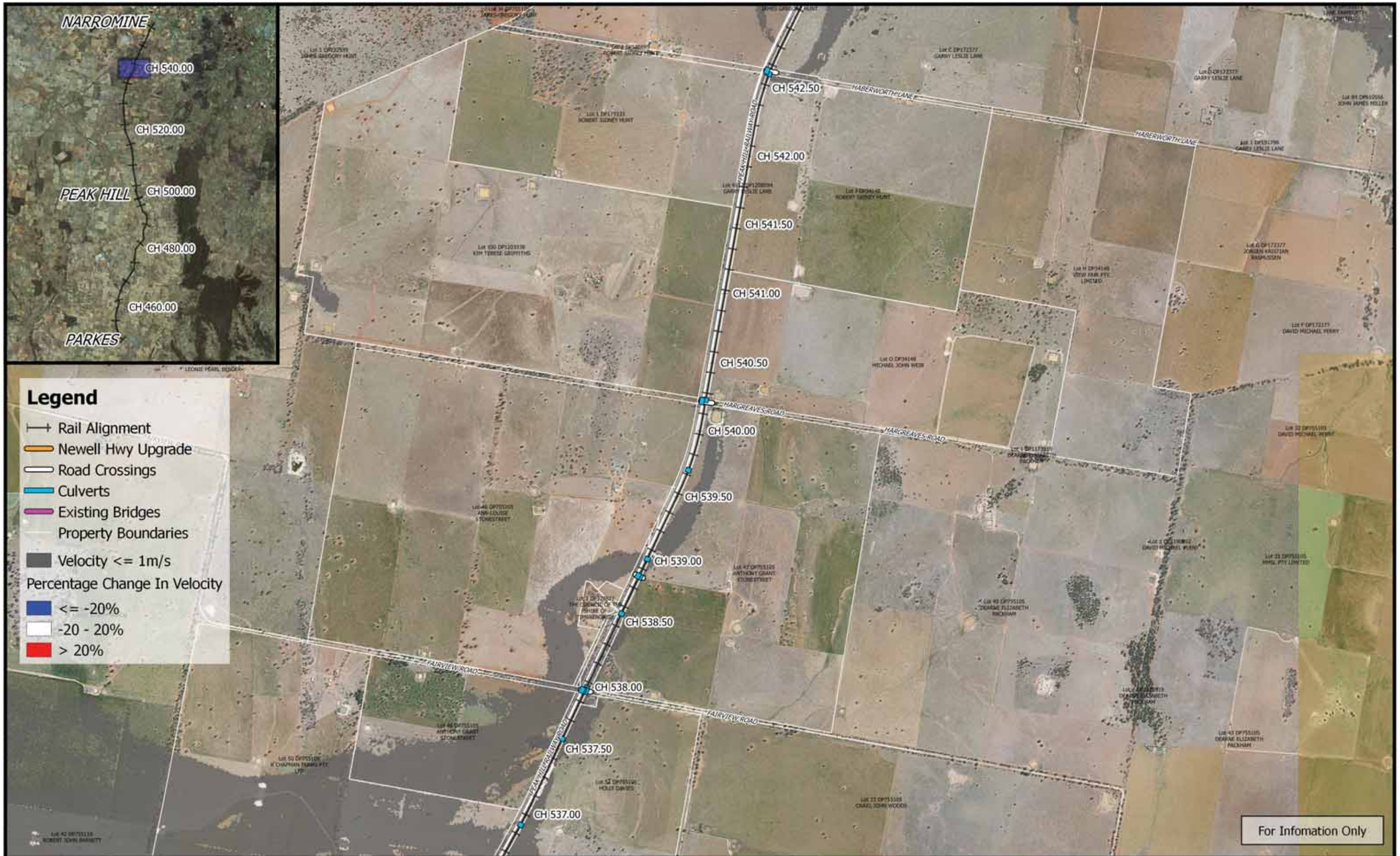


Legend



- +— Rail Alignment
- Newell Hwy Upgrade
- Road Crossings
- Culverts
- Existing Bridges
- Property Boundaries
- Velocity $\leq 1\text{m/s}$
- Percentage Change In Velocity
- $\leq -20\%$
- $-20 - 20\%$
- $> 20\%$

For Information Only


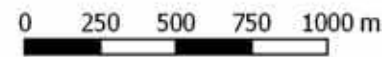

	 0 250 500 750 1000 m 1:25,000	 	Date: 22/3/2019	Inland Rail - Parkes to Narromine IFC - Cross Drainage Flood Impact Assessment Results Figure DE5VC21 <i>5% AEP Percentage Change In Velocity - CH 533.00</i>	
	Coordinate system: GDA 1994 MGA Zone 55 Inset Aerial Source: NSW Six Map Scale ratio correct when printed at A3		Rev: B - For Information Only		
			Prepared By: YeohM		



For Information Only

	0 250 500 750 1000 m 1:25,000		Date: 22/3/2019	Inland Rail - Parkes to Narromine IFC - Cross Drainage Flood Impact Assessment Results Figure DE5VC23 5% AEP Percentage Change In Velocity - CH 540.00
	Coordinate system: GDA 1994 MGA Zone 55 Inset Aerial Source: NSW Six Map Scale ratio correct when printed at A3		Rev: B - For Information Only	
	Prepared By: YeohM			



	 1:25,000 Coordinate system: GDA 1994 MGA Zone 55 Inset Aerial Source: NSW Six Map Scale ratio correct when printed at A3		Date: 22/3/2019 Rev: B - For Information Only Prepared By: YeohM	<p align="center">Inland Rail - Parkes to Narromine IFC - Cross Drainage Flood Impact Assessment Results</p> <p align="right">Figure DE5VC25 5% AEP Percentage Change In Velocity - CH 550.00</p>
---	--	--	--	---