

Appendix B

Design Conditions Flood Maps

B01 – Flood Level Change (Afflux) 18% AEP

B02 – Flood Level Change (Afflux) 5% AEP

B03 – Flood Level Change (Afflux) 2% AEP

B04 – Flood Level Change (Afflux) 0.05% AEP

B05 – Flood Velocity Change 18% AEP

B06 – Flood Velocity Change 5% AEP

B07 – Flood Velocity Change 2% AEP

B08 – Flood Velocity Change 0.05% AEP

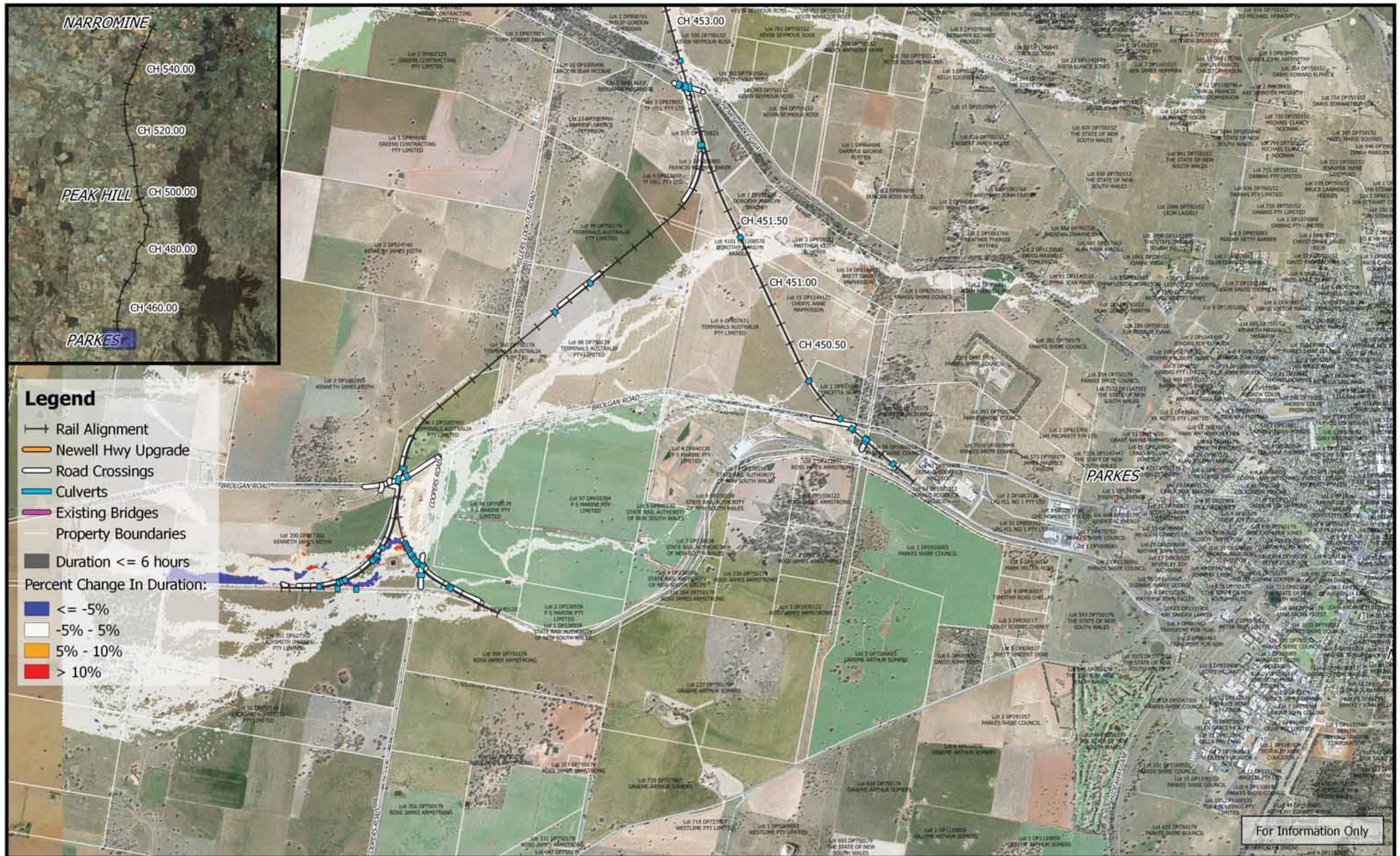
B09 – Flood Duration Change 18% AEP

B10 – Flood Duration Change 5% AEP

B11 – Flood Duration Change 2% AEP

B12 – Flood Duration Change 0.05% AEP



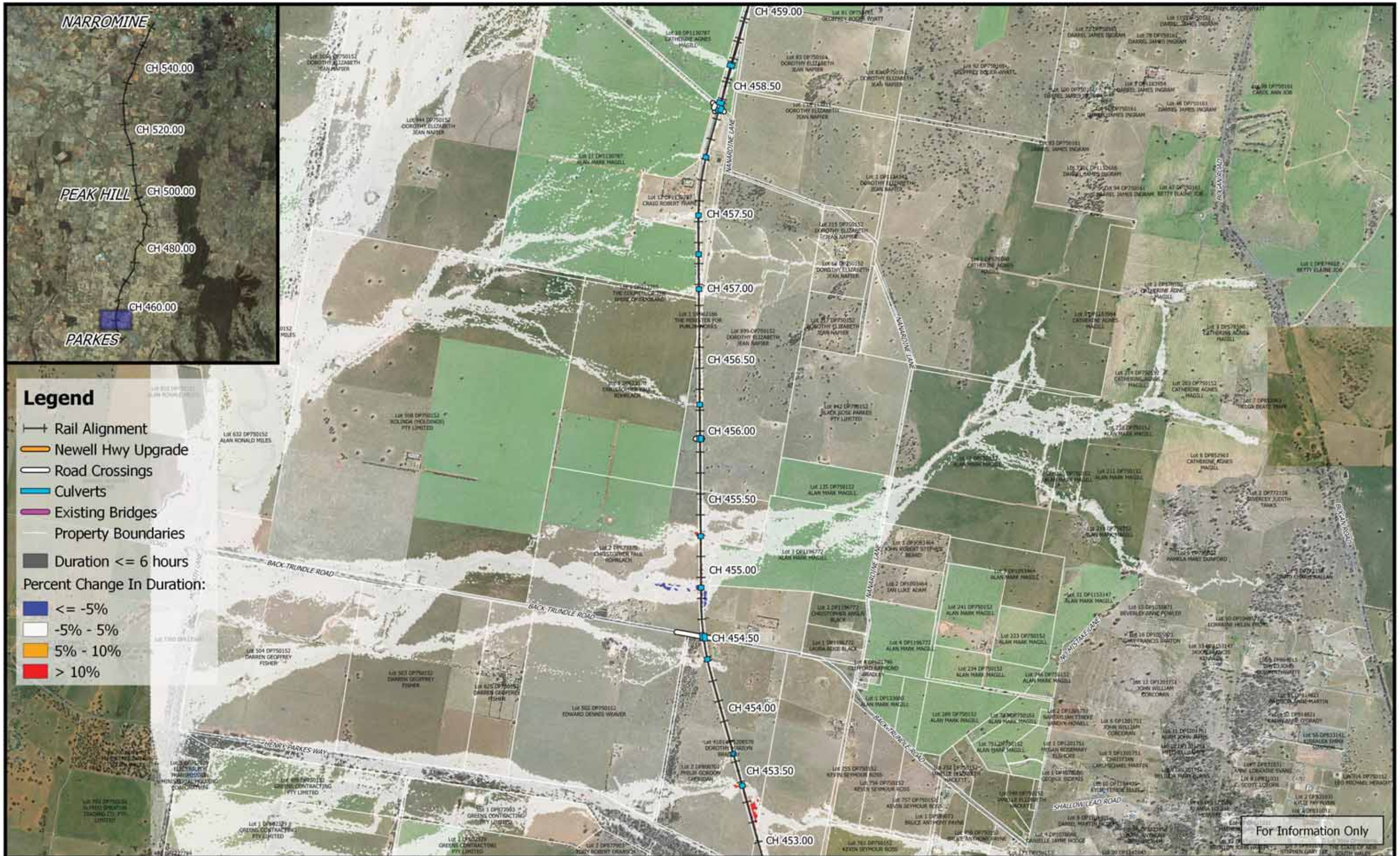


Legend

- Rail Alignment
- Newell Hwy Upgrade
- Road Crossings
- Culverts
- Existing Bridges
- Property Boundaries
- Duration <= 6 hours
- Percent Change In Duration:**
- <= -5%
- 5% - 5%
- 5% - 10%
- > 10%

For Information Only

	 1:25,000		Date: 26/3/2019 Rev: B - For Information Only Prepared By: YeohM	Inland Rail - Parkes to Narromine IFC - Cross Drainage Flood Impact Assessment Results Figure DE18DC1 <i>18% AEP Percentage Change In Duration For Flood Depths > 200mm - CH 450.00</i>
	Coordinate system: GDA 1994 MGA Zone 55 Inset Aerial Source: NSW Six Map Scale ratio correct when printed at A3			



Legend

- Rail Alignment
- Newell Hwy Upgrade
- Road Crossings
- Culverts
- Existing Bridges
- Property Boundaries
- Duration <= 6 hours
- Percent Change In Duration:
- <= -5%
- 5% - 5%
- 5% - 10%
- > 10%

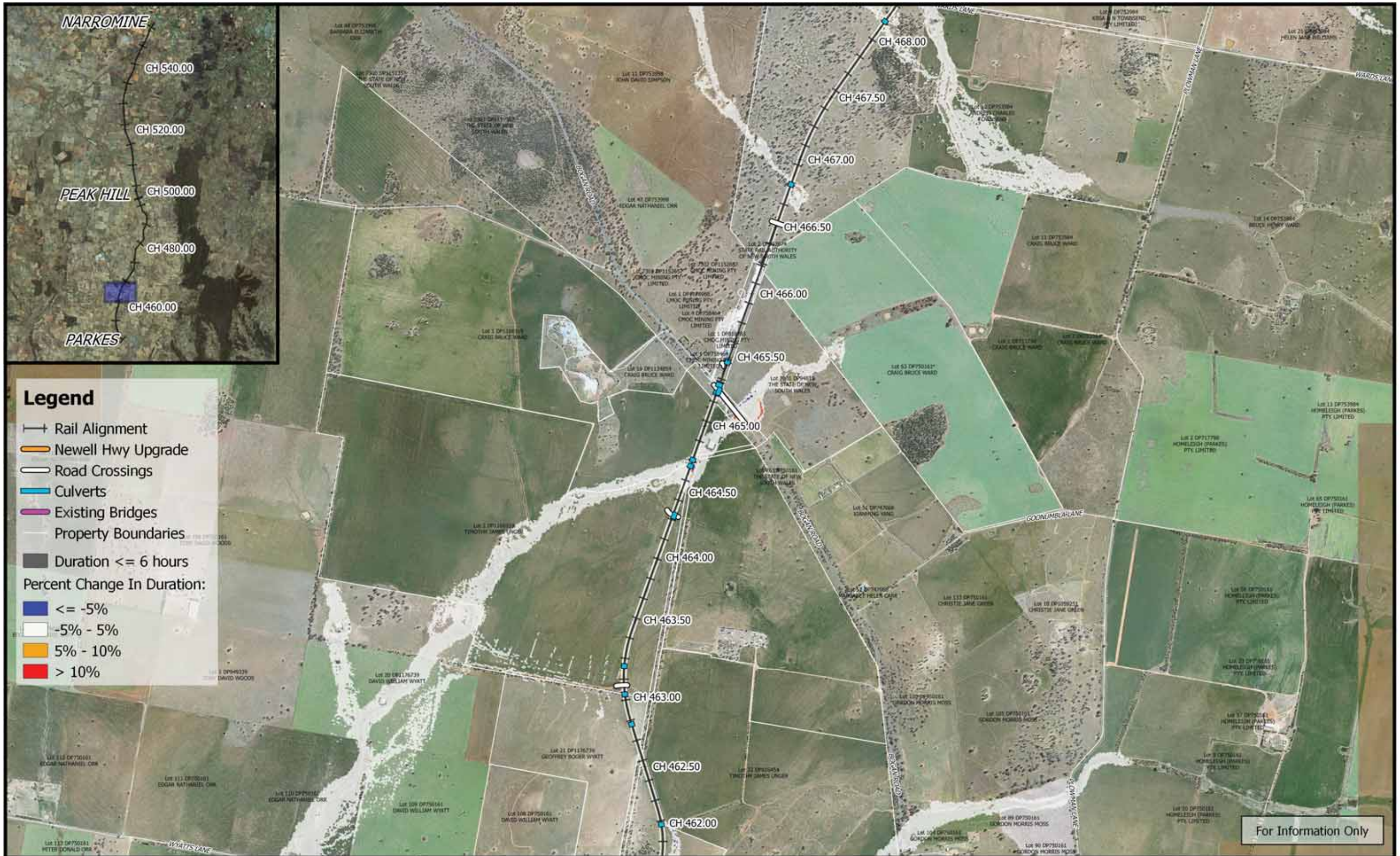
For Information Only

	 1:25,000		Date: 26/3/2019	<p style="margin: 0;">Inland Rail - Parkes to Narromine</p> <p style="margin: 0;">IFC - Cross Drainage Flood Impact Assessment Results</p> <p style="margin: 0;">Figure DE18DC2</p> <p style="margin: 0;"><i>18% AEP Percentage Change In Duration For Flood Depths > 200mm - CH 455.00</i></p>
	Coordinate system: GDA 1994 MGA Zone 55 Inset Aerial Source: NSW Six Map Scale ratio correct when printed at A3		Rev: B - For Information Only	

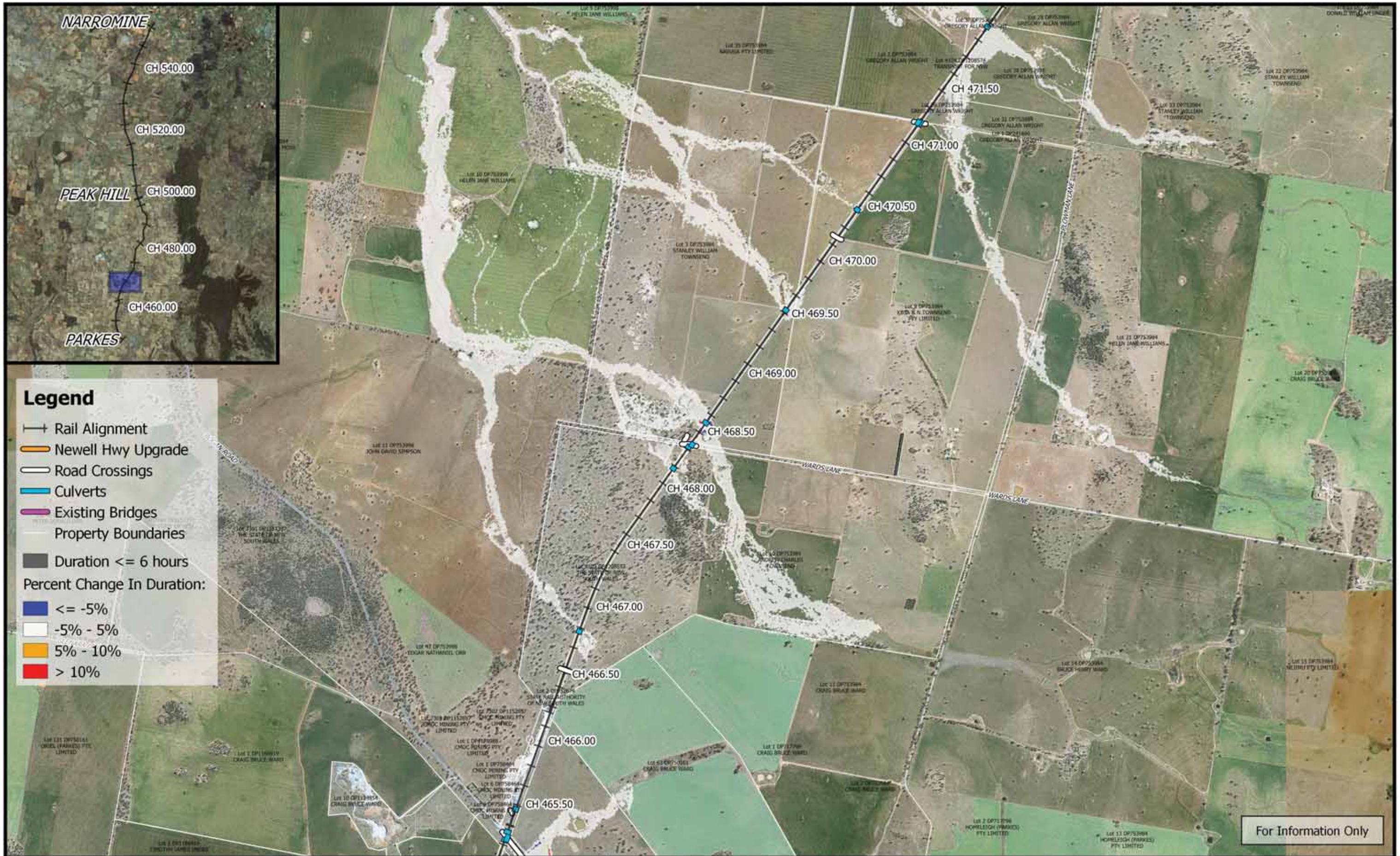


For Information Only

	<p>0 250 500 750 1000 m</p> <p>1:25,000</p> <p>Coordinate system: GDA 1994 MGA Zone 55 Inset Aerial Source: NSW Six Map Scale ratio correct when printed at A3</p>		Date: 26/3/2019	<p>Inland Rail - Parkes to Narromine IFC - Cross Drainage Flood Impact Assessment Results</p>
			Rev: B - For Information Only	
		Prepared By: YeohM		



	<p>0 250 500 750 1000 m</p> <p>1:25,000</p> <p>Coordinate system: GDA 1994 MGA Zone 55 Inset Aerial Source: NSW Six Map Scale ratio correct when printed at A3</p>		Date: 26/3/2019	<p>Inland Rail - Parkes to Narromine IFC - Cross Drainage Flood Impact Assessment Results</p>
			Rev: B - For Information Only	
		Prepared By: YeohM		



Legend

- +— Rail Alignment
- Newell Hwy Upgrade
- Road Crossings
- Culverts
- Existing Bridges
- Property Boundaries
- Duration <= 6 hours

Percent Change In Duration:

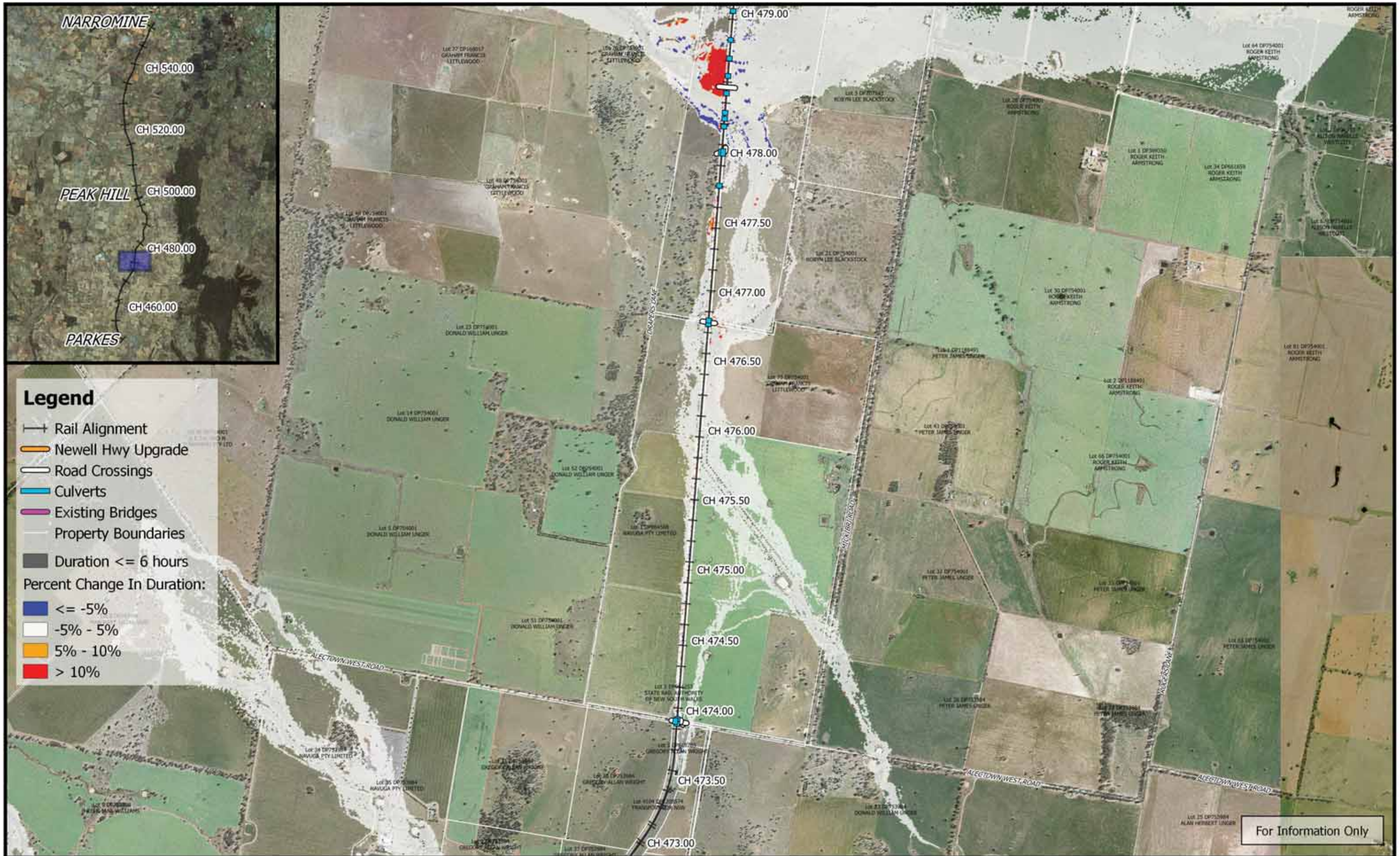
- <= -5%
- -5% - 5%
- 5% - 10%
- > 10%

For Information Only

	<p>0 250 500 750 1000 m</p> <p>1:25,000</p>		<p>Date: 26/3/2019</p>	<p>Inland Rail - Parkes to Narromine</p> <p>IFC - Cross Drainage Flood Impact Assessment Results</p>
	<p>Coordinate system: GDA 1994 MGA Zone 55 Inset Aerial Source: NSW Six Map Scale ratio correct when printed at A3</p>		<p>Rev: B - For Information Only</p>	<p>Figure DE18DC5</p> <p>18% AEP Percentage Change In Duration For Flood Depths > 200mm - CH 470.00</p>
		<p>Prepared By: YeohM</p>		



	<p>0 250 500 750 1000 m</p> <p>1:25,000</p> <p>Coordinate system: GDA 1994 MGA Zone 55 Inset Aerial Source: NSW Six Map Scale ratio correct when printed at A3</p>		Date: 26/3/2019	<p>Inland Rail - Parkes to Narromine IFC - Cross Drainage Flood Impact Assessment Results</p>
			Rev: B - For Information Only	
			Prepared By: YeohM	



Legend

- Rail Alignment
- Newell Hwy Upgrade
- Road Crossings
- Culverts
- Existing Bridges
- Property Boundaries
- Duration <= 6 hours
- Percent Change In Duration:
- <= -5%
- 5% - 5%
- 5% - 10%
- > 10%

For Information Only



0 250 500 750 1000 m
1:25,000

Coordinate system: GDA 1994 MGA Zone 55
Inset Aerial Source: NSW Six Map
Scale ratio correct when printed at A3



Date: 26/3/2019

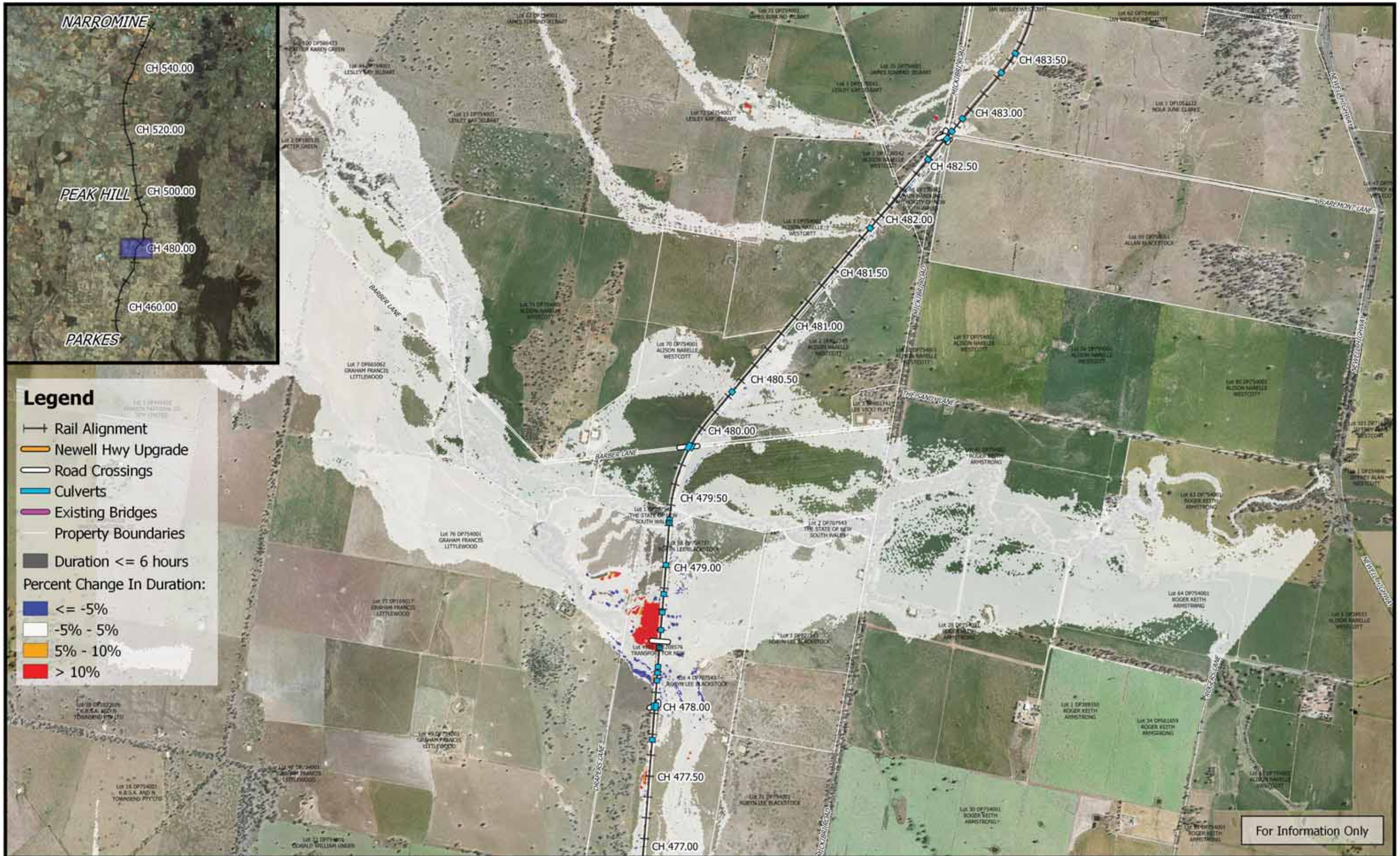
Rev: B - For Information Only

Prepared By: YeohM



Inland Rail - Parkes to Narromine
IFC - Cross Drainage Flood Impact Assessment Results

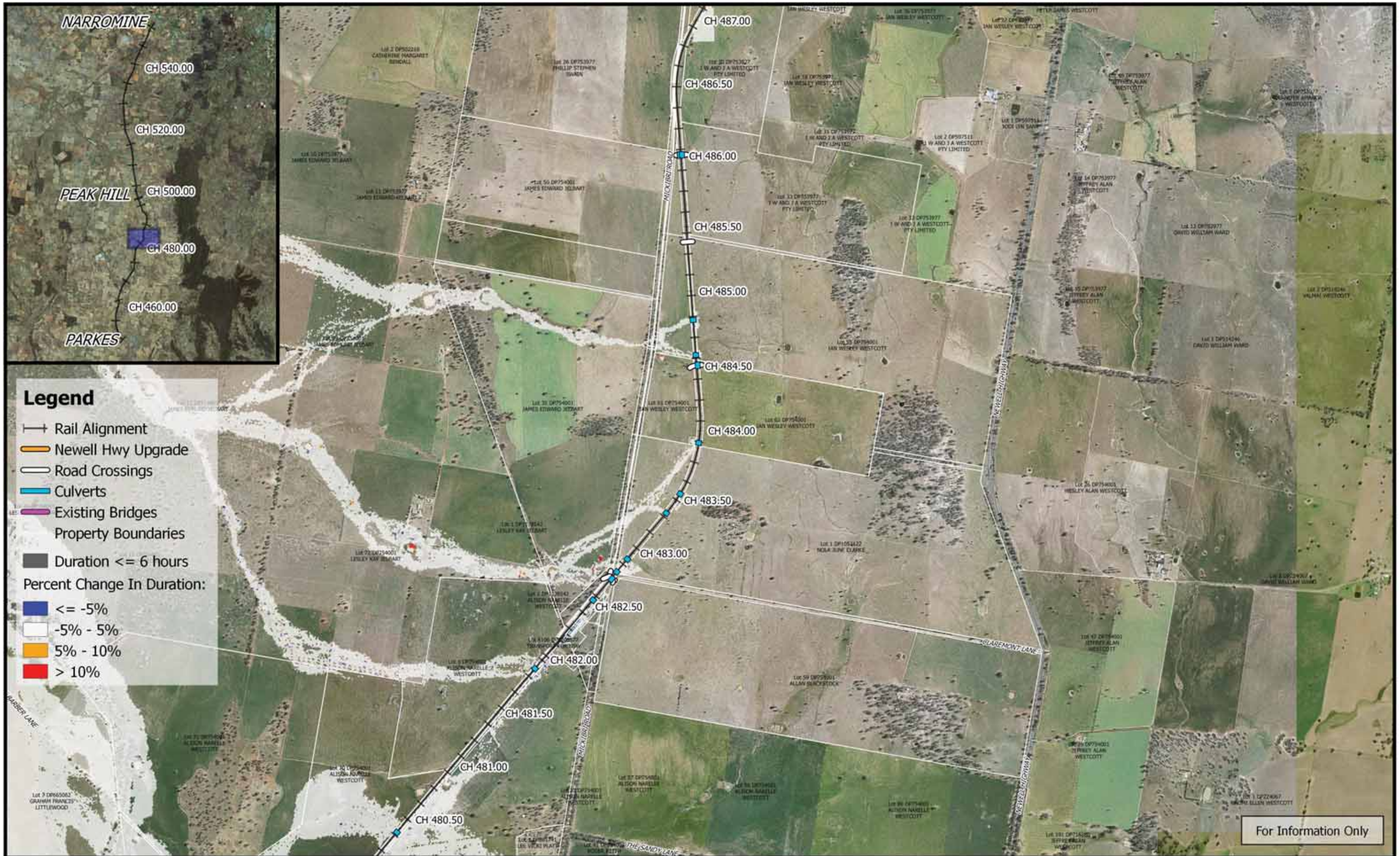
Figure DE18DC7

18% AEP Percentage Change In Duration For Flood Depths > 200mm - CH 475.00



For Information Only

	<p>0 250 500 750 1000 m</p> <p>1:25,000</p> <p>Coordinate system: GDA 1994 MGA Zone 55 Inset Aerial Source: NSW Six Map Scale ratio correct when printed at A3</p>		Date: 26/3/2019	<p align="center">Inland Rail - Parkes to Narromine IFC - Cross Drainage Flood Impact Assessment Results</p> <p align="right">Figure DE18DC8</p> <p align="center"><i>18% AEP Percentage Change In Duration For Flood Depths > 200mm - CH 480.00</i></p>
			Rev: B - For Information Only	
			Prepared By: YeohM	

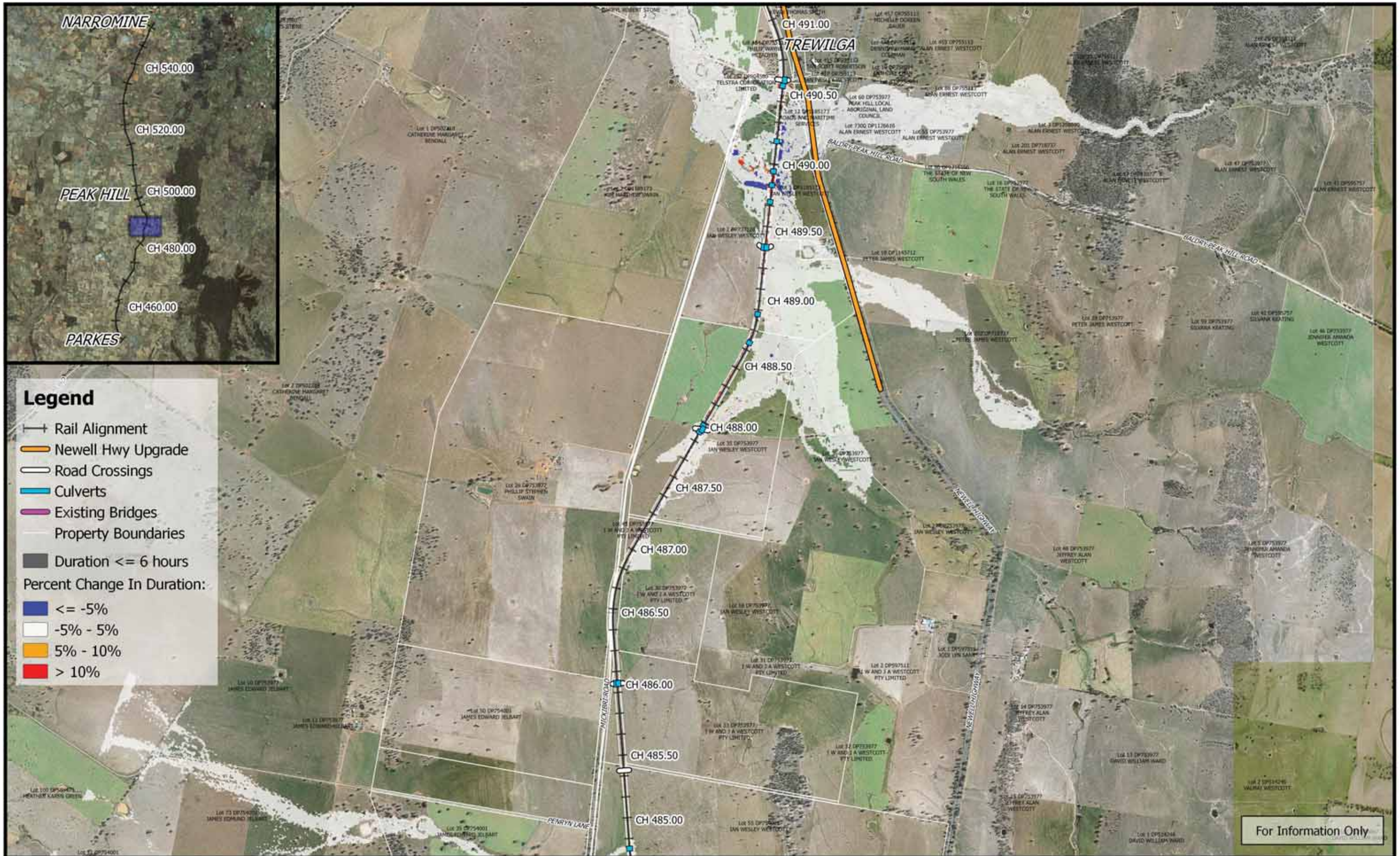


Legend

- +— Rail Alignment
- Newell Hwy Upgrade
- Road Crossings
- Culverts
- Existing Bridges
- Property Boundaries
- Duration <= 6 hours
- Percent Change In Duration:
- <= -5%
- -5% - 5%
- 5% - 10%
- > 10%

For Information Only

	<p>0 250 500 750 1000 m</p> <p>1:25,000</p>		<p>Date: 26/3/2019</p>	<p>Inland Rail - Parkes to Narromine IFC - Cross Drainage Flood Impact Assessment Results</p>
	<p>Coordinate system: GDA 1994 MGA Zone 55 Inset Aerial Source: NSW Six Map Scale ratio correct when printed at A3</p>		<p>Rev: B - For Information Only</p>	
		<p>Prepared By: YeohM</p>		



Legend



- +— Rail Alignment
- Newell Hwy Upgrade
- Road Crossings
- Culverts
- Existing Bridges
- Property Boundaries
- Duration <= 6 hours
- Percent Change In Duration:
- <= -5%
- -5% - 5%
- 5% - 10%
- > 10%

For Information Only

	<p>0 250 500 750 1000 m</p> <p>1:25,000</p>		Date: 26/3/2019	<p>Inland Rail - Parkes to Narromine</p> <p>IFC - Cross Drainage Flood Impact Assessment Results</p>
	Coordinate system: GDA 1994 MGA Zone 55 Inset Aerial Source: NSW Six Map Scale ratio correct when printed at A3		Rev: B - For Information Only	
		Prepared By: YeohM		

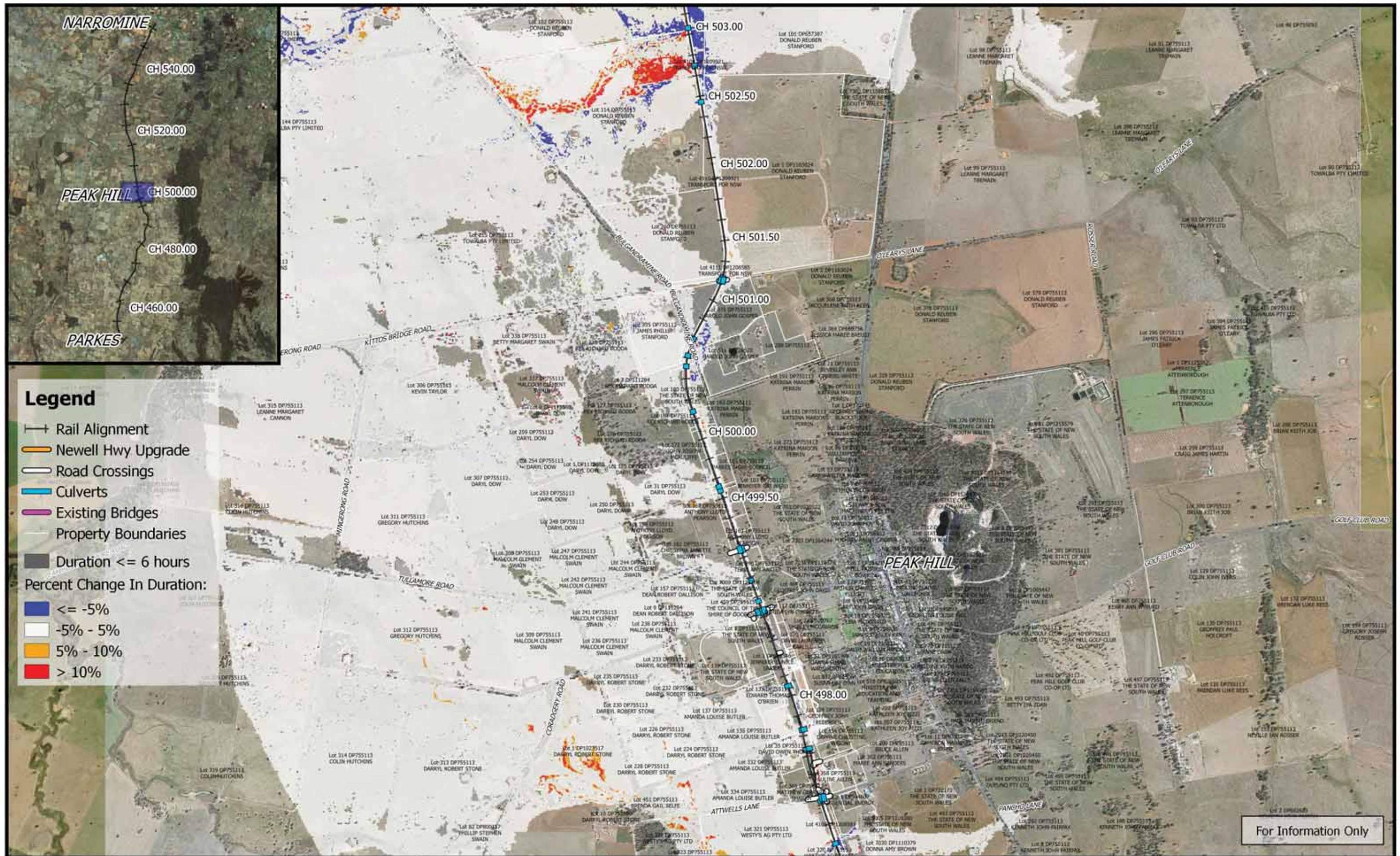


For Information Only


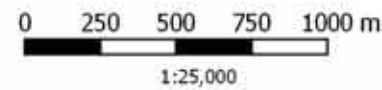

	<p>0 250 500 750 1000 m</p> <p>1:25,000</p> <p>Coordinate system: GDA 1994 MGA Zone 55 Inset Aerial Source: NSW Six Map Scale ratio correct when printed at A3</p>		Date: 26/3/2019	<p>Inland Rail - Parkes to Narromine IFC - Cross Drainage Flood Impact Assessment Results</p>
			Rev: B - For Information Only	
		Prepared By: YeohM		

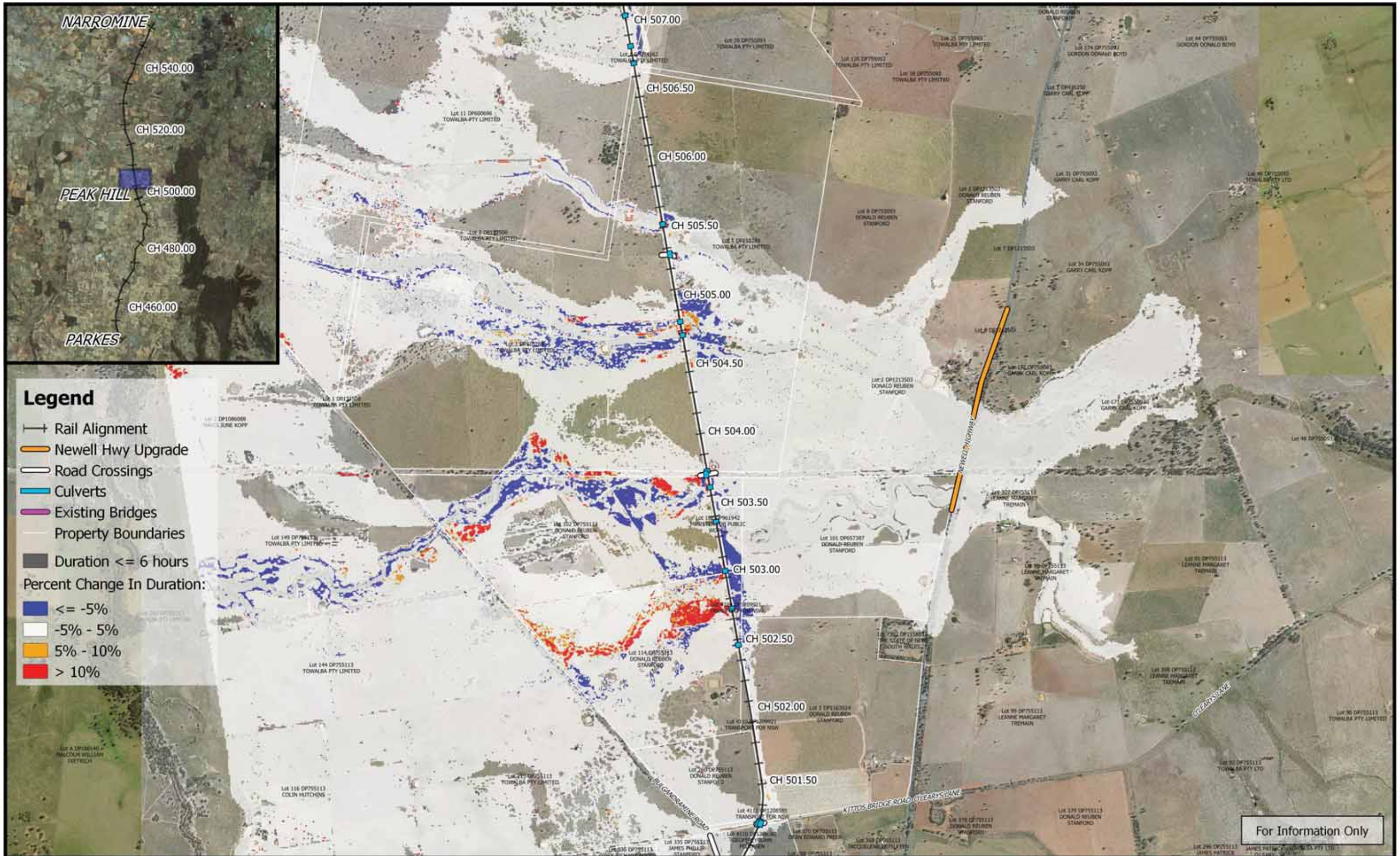


	<p>1:25,000</p> <p>Coordinate system: GDA 1994 MGA Zone 55 Inset Aerial Source: NSW Six Map Scale ratio correct when printed at A3</p>		Date: 26/3/2019	<p align="center">Inland Rail - Parkes to Narromine IFC - Cross Drainage Flood Impact Assessment Results</p> <p align="right">Figure DE18DC12 <i>18% AEP Percentage Change In Duration For Flood Depths > 200mm - CH 495.00</i></p>
			Rev: B - For Information Only	
			Prepared By: YeohM	



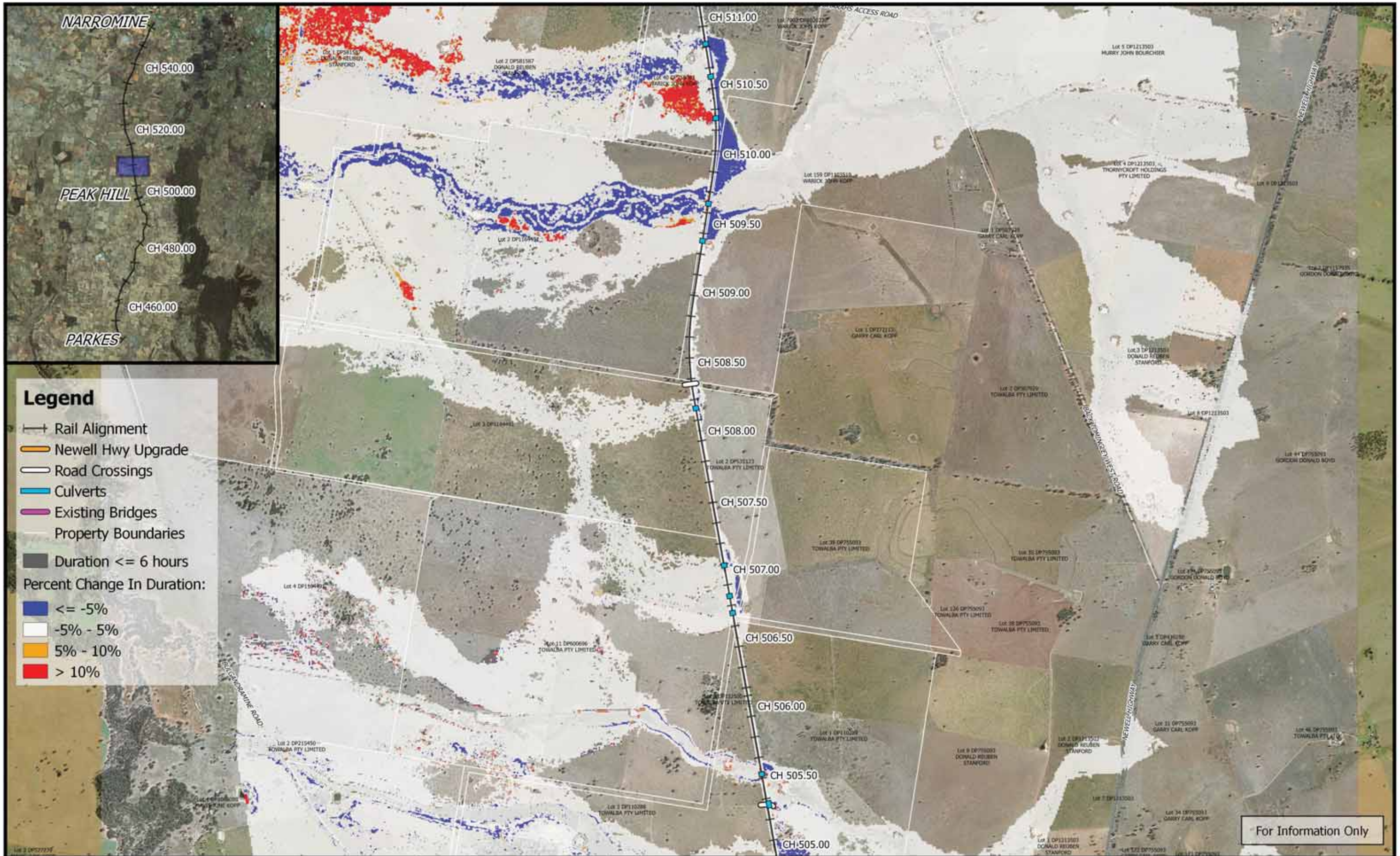
For Information Only

	 <p>Coordinate system: GDA 1994 MGA Zone 55 Inset Aerial Source: NSW Six Map Scale ratio correct when printed at A3</p>		Date: 26/3/2019	<p align="center">Inland Rail - Parkes to Narromine IFC - Cross Drainage Flood Impact Assessment Results</p>
			Rev: B - For Information Only	
Prepared By: YeohM			18% AEP Percentage Change In Duration For Flood Depths > 200mm - CH 500.00	



For Information Only

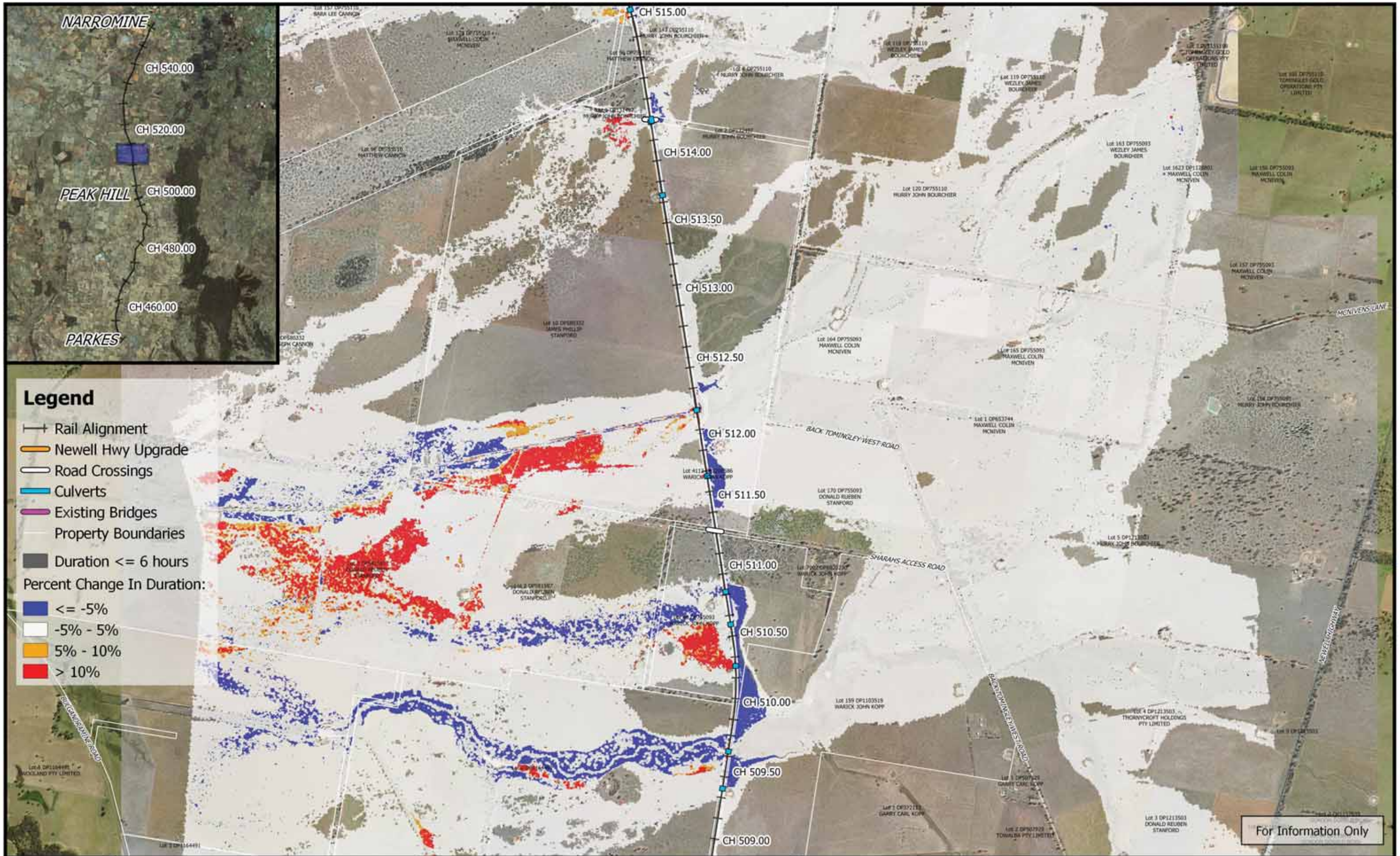
	<p>0 250 500 750 1000 m</p> <p>1:25,000</p> <p>Coordinate system: GDA 1994 MGA Zone 55 Inset Aerial Source: NSW Six Map Scale ratio correct when printed at A3</p>		Date: 26/3/2019	<p>Inland Rail - Parkes to Narromine IFC - Cross Drainage Flood Impact Assessment Results</p>
			Rev: B - For Information Only	
		Prepared By: YeohM		



- Legend**
- +— Rail Alignment
 - Newell Hwy Upgrade
 - Road Crossings
 - Culverts
 - Existing Bridges
 - Property Boundaries
 - Duration \leq 6 hours
- Percent Change In Duration:
- $\leq -5\%$
 - $-5\% - 5\%$
 - $5\% - 10\%$
 - $> 10\%$

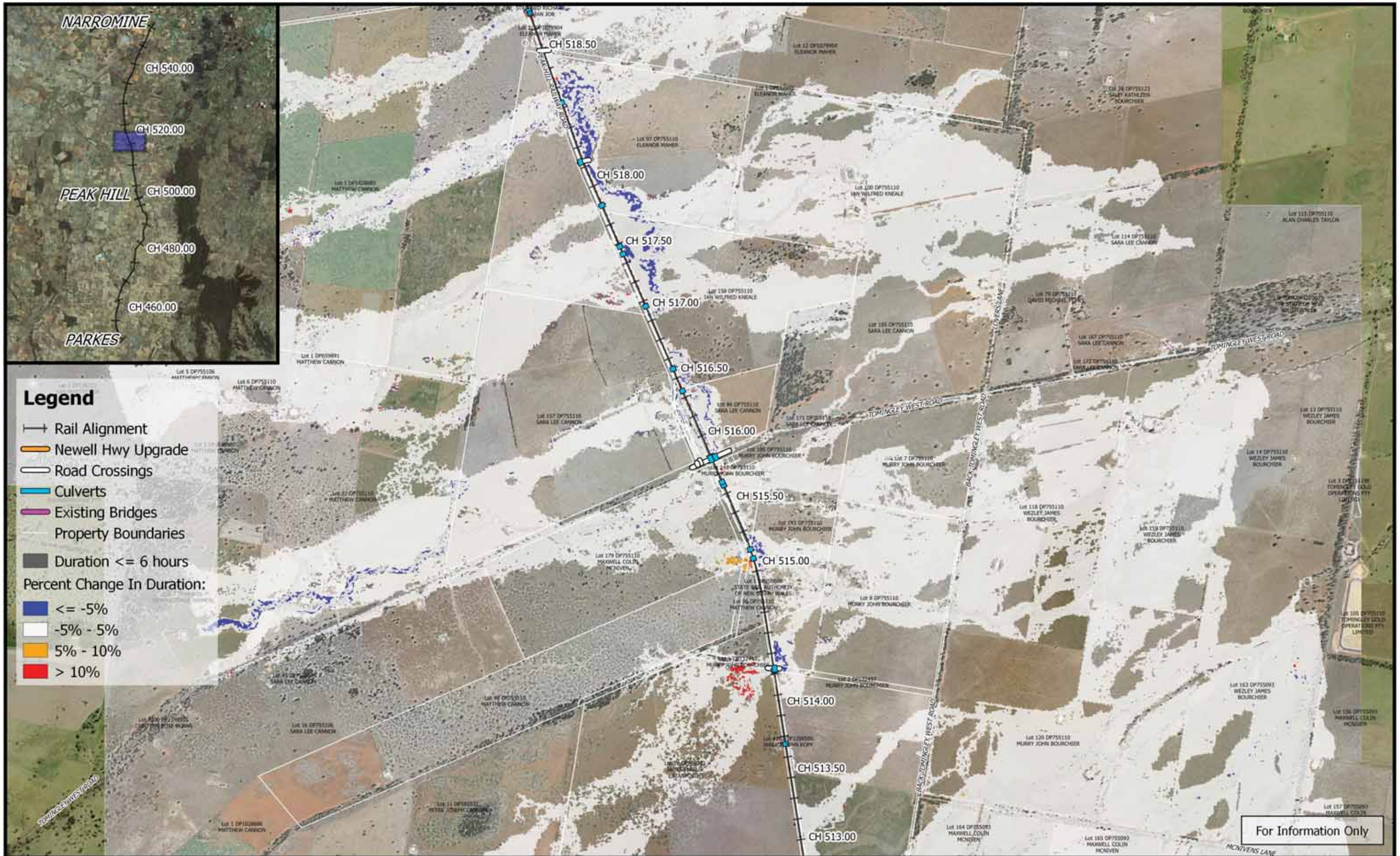
For Information Only

	<p>0 250 500 750 1000 m</p> <p>1:25,000</p> <p>Coordinate system: GDA 1994 MGA Zone 55 Inset Aerial Source: NSW Six Map Scale ratio correct when printed at A3</p>		Date: 26/3/2019	<p>Inland Rail - Parkes to Narromine IFC - Cross Drainage Flood Impact Assessment Results</p> <p>Figure DE18DC15 <i>18% AEP Percentage Change In Duration For Flood Depths > 200mm - CH 510.00</i></p>
			Rev: B - For Information Only	



For Information Only

	<p>0 250 500 750 1000 m</p> <p>1:25,000</p> <p>Coordinate system: GDA 1994 MGA Zone 55 Inset Aerial Source: NSW Six Map Scale ratio correct when printed at A3</p>		Date: 26/3/2019	<p>Inland Rail - Parkes to Narromine IFC - Cross Drainage Flood Impact Assessment Results</p>
			Rev: B - For Information Only	
			Prepared By: YeohM	



Legend

- Rail Alignment
- Newell Hwy Upgrade
- Road Crossings
- Culverts
- Existing Bridges
- Property Boundaries
- Duration <= 6 hours
- Percent Change In Duration:
- <= -5%
- -5% - 5%
- 5% - 10%
- > 10%

For Information Only

	<p>0 250 500 750 1000 m</p> <p>1:25,000</p>		Date: 26/3/2019	<p>Inland Rail - Parkes to Narromine IFC - Cross Drainage Flood Impact Assessment Results</p>
	Coordinate system: GDA 1994 MGA Zone 55 Inset Aerial Source: NSW Six Map Scale ratio correct when printed at A3		Rev: B - For Information Only	
		Prepared By: YeohM		



Legend

- Rail Alignment
- Newell Hwy Upgrade
- Road Crossings
- Culverts
- Existing Bridges
- Property Boundaries
- Duration <= 6 hours
- Percent Change In Duration:
- <= -5%
- -5% - 5%
- 5% - 10%
- > 10%

For Information Only

	<p>0 250 500 750 1000 m</p> <p>1:25,000</p>		<p>Date: 26/3/2019</p>	<p>Inland Rail - Parkes to Narromine IFC - Cross Drainage Flood Impact Assessment Results</p>
	<p>Coordinate system: GDA 1994 MGA Zone 55 Inset Aerial Source: NSW Six Map Scale ratio correct when printed at A3</p>		<p>Rev: B - For Information Only</p>	<p>Figure DE18DC18 <i>18% AEP Percentage Change In Duration For Flood Depths > 200mm - CH 520.00</i></p>
		<p>Prepared By: YeohM</p>		

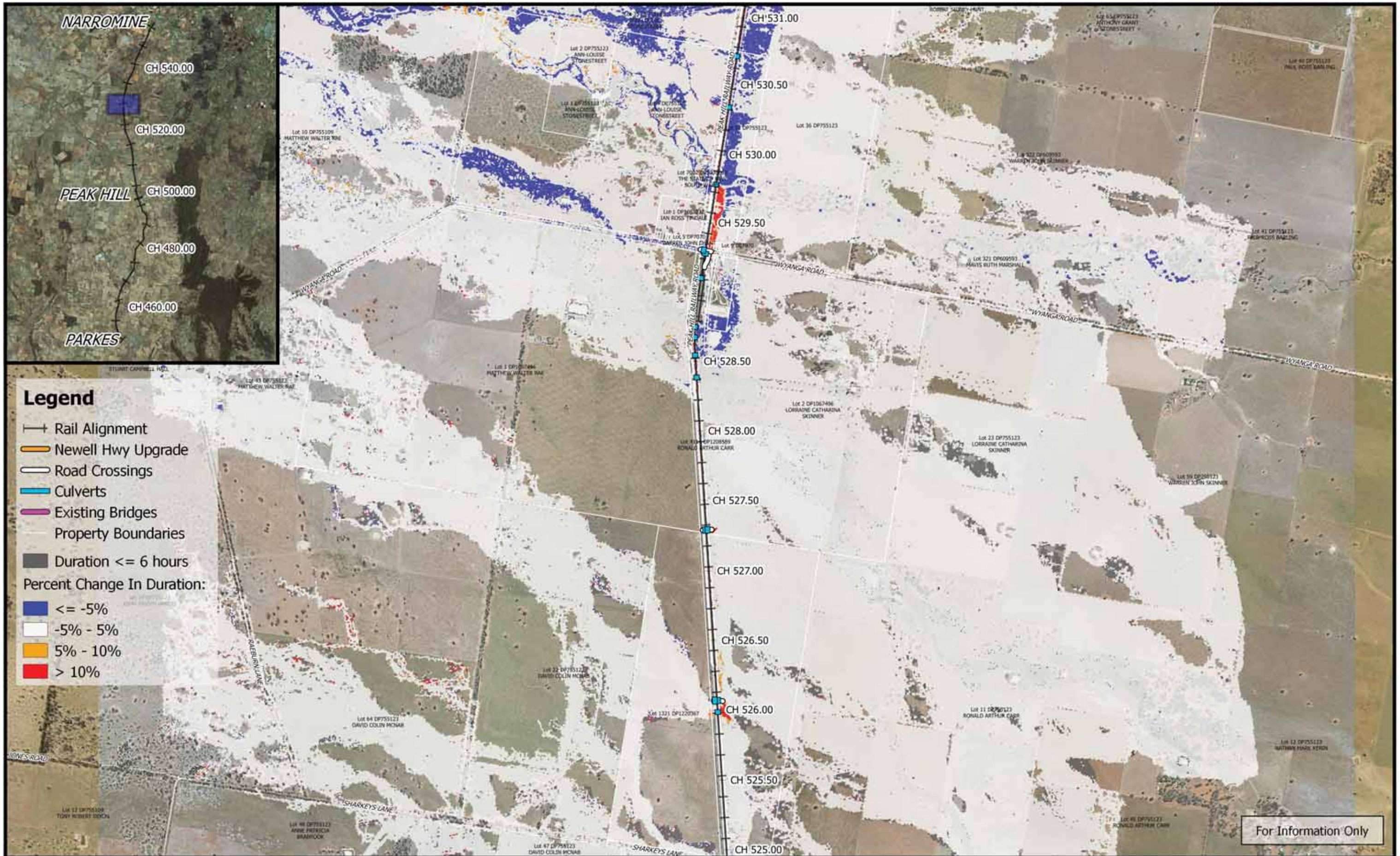


Legend

- +— Rail Alignment
- Newell Hwy Upgrade
- Road Crossings
- Culverts
- Existing Bridges
- Property Boundaries
- Duration <= 6 hours
- Percent Change In Duration:
- <= -5%
- -5% - 5%
- 5% - 10%
- > 10%

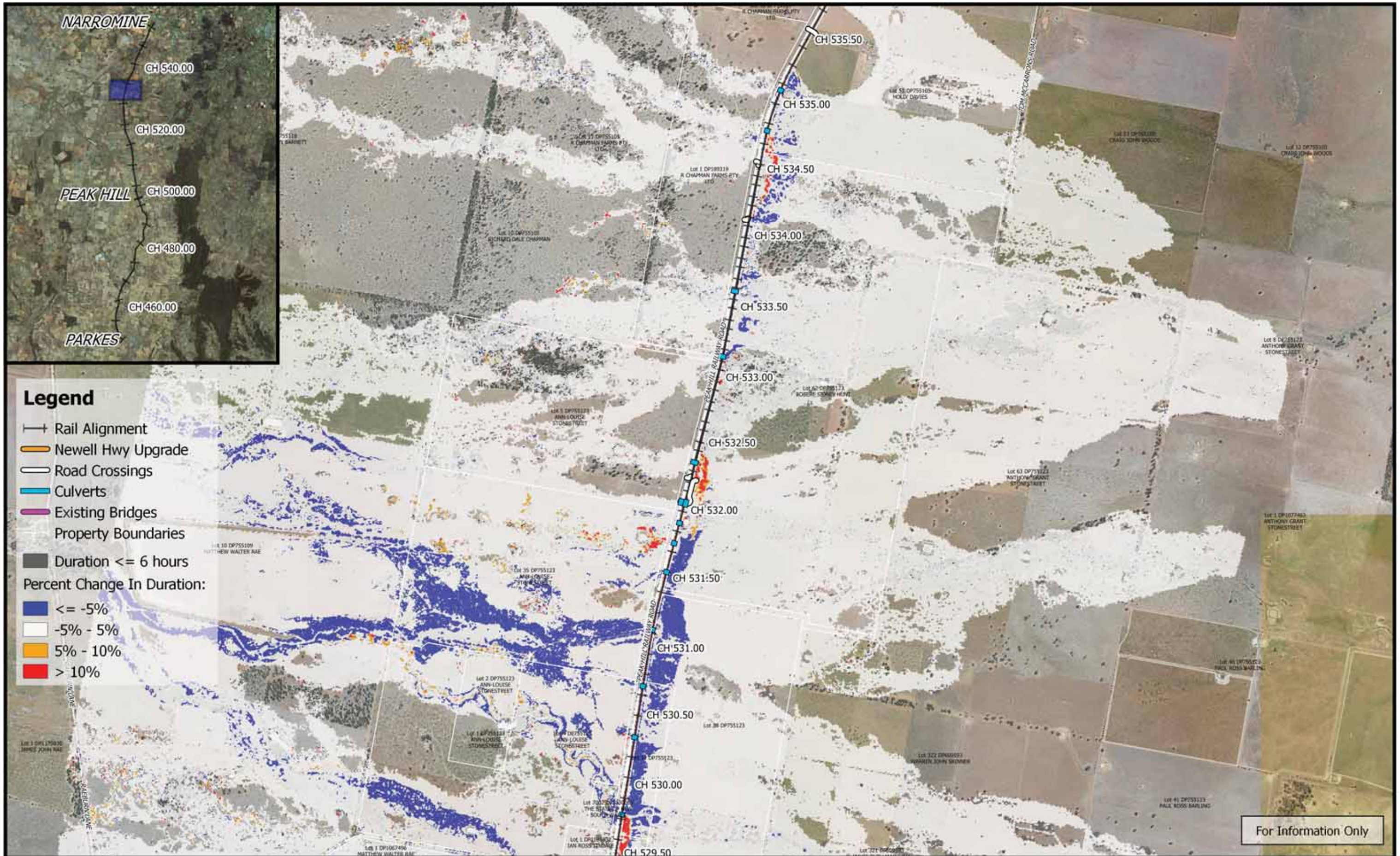
For Information Only

	<p>0 250 500 750 1000 m</p> <p>1:25,000</p> <p>Coordinate system: GDA 1994 MGA Zone 55 Inset Aerial Source: NSW Six Map Scale ratio correct when printed at A3</p>		Date: 26/3/2019	<p>Inland Rail - Parkes to Narromine IFC - Cross Drainage Flood Impact Assessment Results</p>
			Rev: B - For Information Only	
			Prepared By: YeohM	



For Information Only

	<p>0 250 500 750 1000 m</p> <p>1:25,000</p> <p>Coordinate system: GDA 1994 MGA Zone 55 Inset Aerial Source: NSW Six Map Scale ratio correct when printed at A3</p>		Date: 26/3/2019	<p align="center">Inland Rail - Parkes to Narromine IFC - Cross Drainage Flood Impact Assessment Results</p>
			Rev: B - For Information Only	
			Prepared By: YeohM	



	0 250 500 750 1000 m 1:25,000 Coordinate system: GDA 1994 MGA Zone 55 Inset Aerial Source: NSW Six Map Scale ratio correct when printed at A3		Date: 26/3/2019	Inland Rail - Parkes to Narromine IFC - Cross Drainage Flood Impact Assessment Results
			Rev: B - For Information Only	
			Prepared By: YeohM	

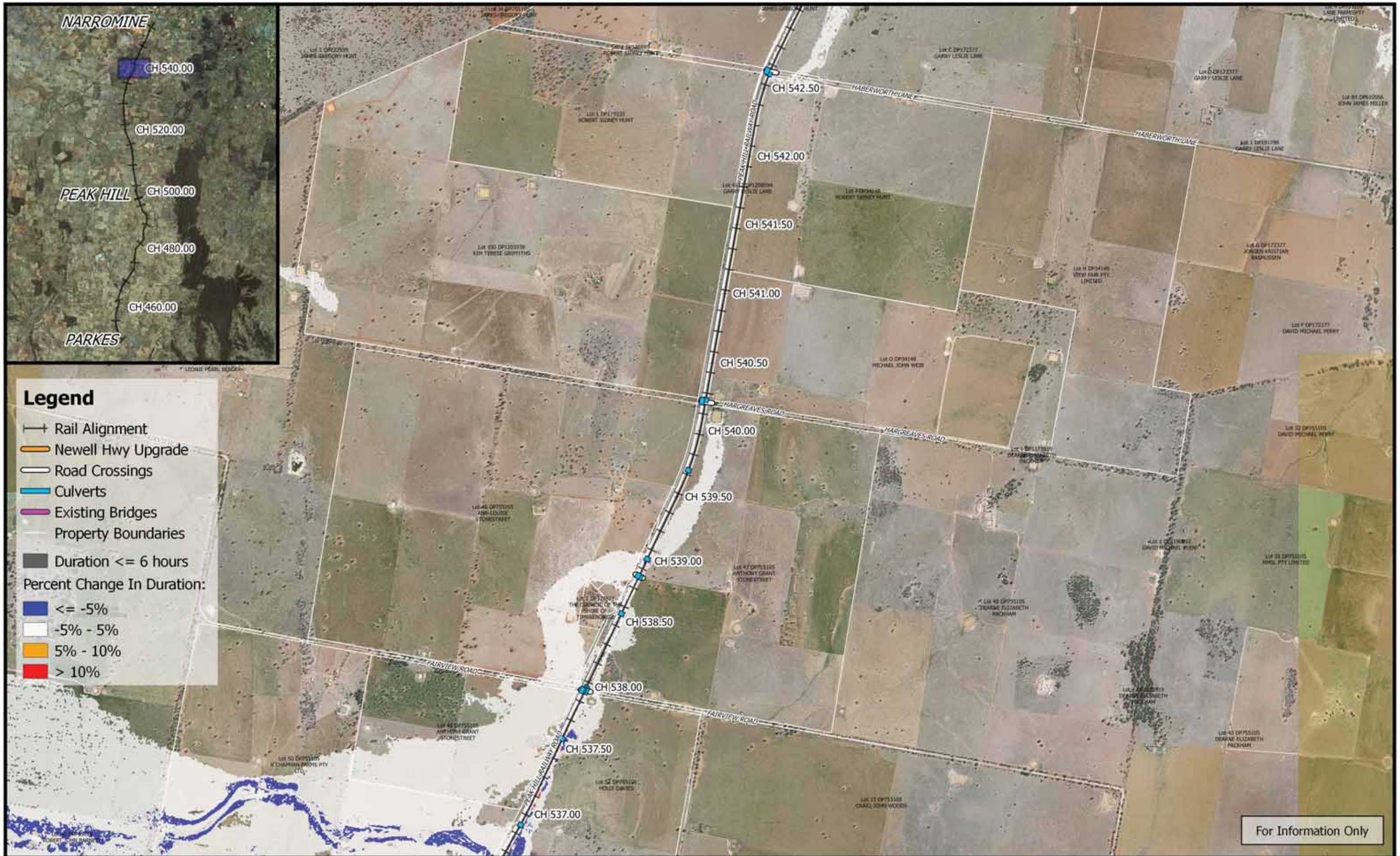


Legend


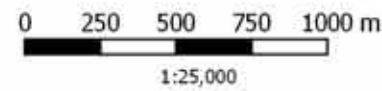


- +— Rail Alignment
- Newell Hwy Upgrade
- Road Crossings
- Culverts
- Existing Bridges
- Property Boundaries
- Duration <= 6 hours
- Percent Change In Duration:
- <= -5%
- -5% - 5%
- 5% - 10%
- > 10%

For Information Only

	<p>0 250 500 750 1000 m</p> <p>1:25,000</p> <p>Coordinate system: GDA 1994 MGA Zone 55 Inset Aerial Source: NSW Six Map Scale ratio correct when printed at A3</p>		Date: 26/3/2019	<p>Inland Rail - Parkes to Narromine IFC - Cross Drainage Flood Impact Assessment Results</p> <p>Figure DE18DC22 <i>18% AEP Percentage Change In Duration For Flood Depths > 200mm - CH 535.00</i></p>
	<p>Rev: B - For Information Only</p> <p>Prepared By: YeohM</p>			



For Information Only

	 1:25,000	 	Date: 26/3/2019	Inland Rail - Parkes to Narromine IFC - Cross Drainage Flood Impact Assessment Results	
	Coordinate system: GDA 1994 MGA Zone 55 Inset Aerial Source: NSW Six Map Scale ratio correct when printed at A3		Rev: B - For Information Only		
			Prepared By: YeohM		Figure DE18DC23 <i>18% AEP Percentage Change In Duration For Flood Depths > 200mm - CH 540.00</i>





For Information Only

	<p>0 250 500 750 1000 m</p> <p>1:25,000</p> <p>Coordinate system: GDA 1994 MGA Zone 55 Inset Aerial Source: NSW Six Map Scale ratio correct when printed at A3</p>		Date: 26/3/2019	<p align="center">Inland Rail - Parkes to Narromine IFC - Cross Drainage Flood Impact Assessment Results</p>
			Rev: B - For Information Only	
			Prepared By: YeohM	



For Information Only

	<p>0 250 500 750 1000 m</p> <p>1:25,000</p> <p>Coordinate system: GDA 1994 MGA Zone 55 Inset Aerial Source: NSW Six Map Scale ratio correct when printed at A3</p>		Date: 26/3/2019	<p align="center">Inland Rail - Parkes to Narromine IFC - Cross Drainage Flood Impact Assessment Results</p>
			Rev: B - For Information Only	
Prepared By: YeohM			18% AEP Percentage Change In Duration For Flood Depths > 200mm - CH 550.00	