

# PARKES TO NARROMINE INLAND RAIL

**NOTIFICATION  
No. 10 March 2019**

## Out-of-hours work on Inland Rail

Inland Rail is a once-in-a-generation project connecting regional Australia to domestic and international markets. Australian Rail Track Corporation (ARTC) has engaged INLink (a joint venture between BMD Constructions and Fulton Hogan) to upgrade and build the first section of the Inland Rail, from Parkes to Narromine.

### Out-of-hours work

As part of our construction work we need to do some activities out of hours. This will be from Saturday 23 March intermittently until late May 2019. This is from north of Tullamore-Peak Hill Road, Peak Hill to Narwonah, Narromine.

### Our standard working hours until mid-2020

- 7am to 6pm Monday to Friday
- 8am to 1pm Saturdays

### Out of hours until late May 2019

- 6am to 6pm on Saturdays
- 6am to 6pm Sundays

### What we will be doing

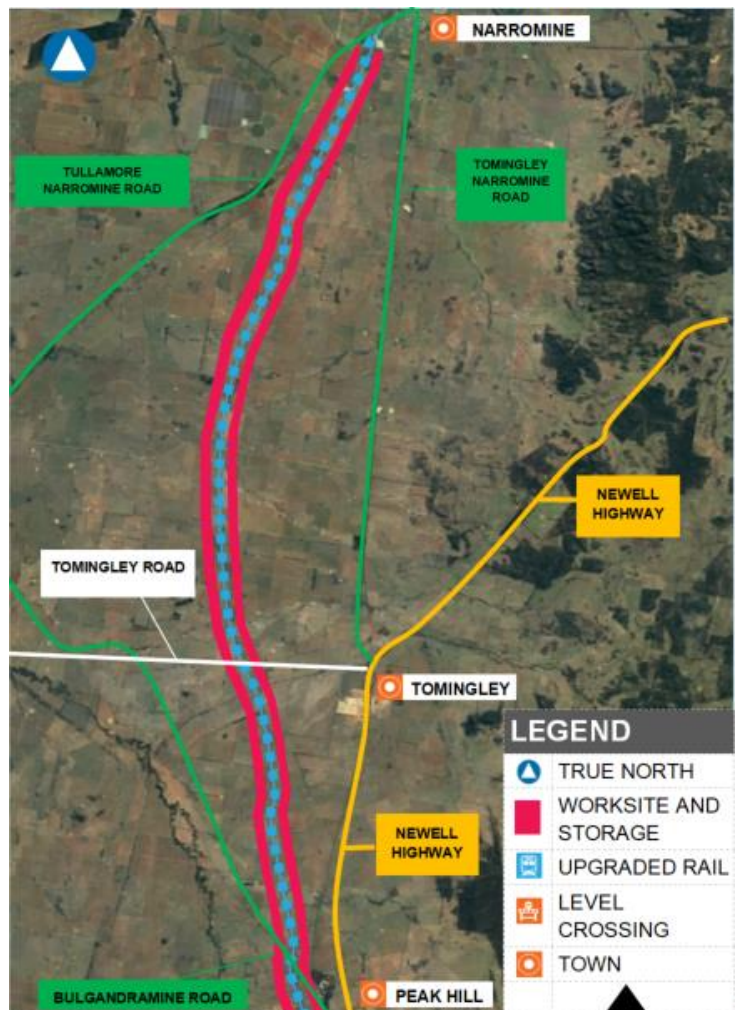
- Removing rail clips, rail and loading onto trains for removal
- Stacking old sleepers into piles
- Levelling ballast (large gravel) around level crossings

### We will use noise minimising techniques, including but not limited to:

- Non-tonal alarms (quackers) on all vehicles and equipment
- Equipment not in use for extended periods shall be switched off
- Pre-work briefs to all staff about noise minimisation

We appreciate your understanding as we build this once-in-a-generation project. We can be contacted **24 hours a day, 7 days a week on 1800 732 761**.

## Out of Hours Work Area



Document number: 5-0012-240-PCS-00-FS-0022

## FOR MORE INFORMATION

Contact us via **1800 732 761**, or email [inlandrailnsw@artc.com.au](mailto:inlandrailnsw@artc.com.au)  
Find out more on our website, [inlandrail.com.au](http://inlandrail.com.au)