

PARKES TO NARROMINE INLAND RAIL

**NOTIFICATION
No 15, April 2019**

Level Crossing upgrades and temporary closures – Laneway off Drapers Lane, Alectown

Inland Rail is a once-in-a-generation project connecting regional Australia to domestic and international markets. Australian Rail Track Corporation (ARTC) has engaged INLink (a joint venture between BMD Constructions and Fulton Hogan) to upgrade and build the first section of the Inland Rail, from Parkes to Narromine.

TEMPORARY LANE CLOSURE MAP

Temporary Laneway Closure

As part of this work, we are upgrading level crossings between Parkes and Narromine and need to temporarily close some public roads and lanes.

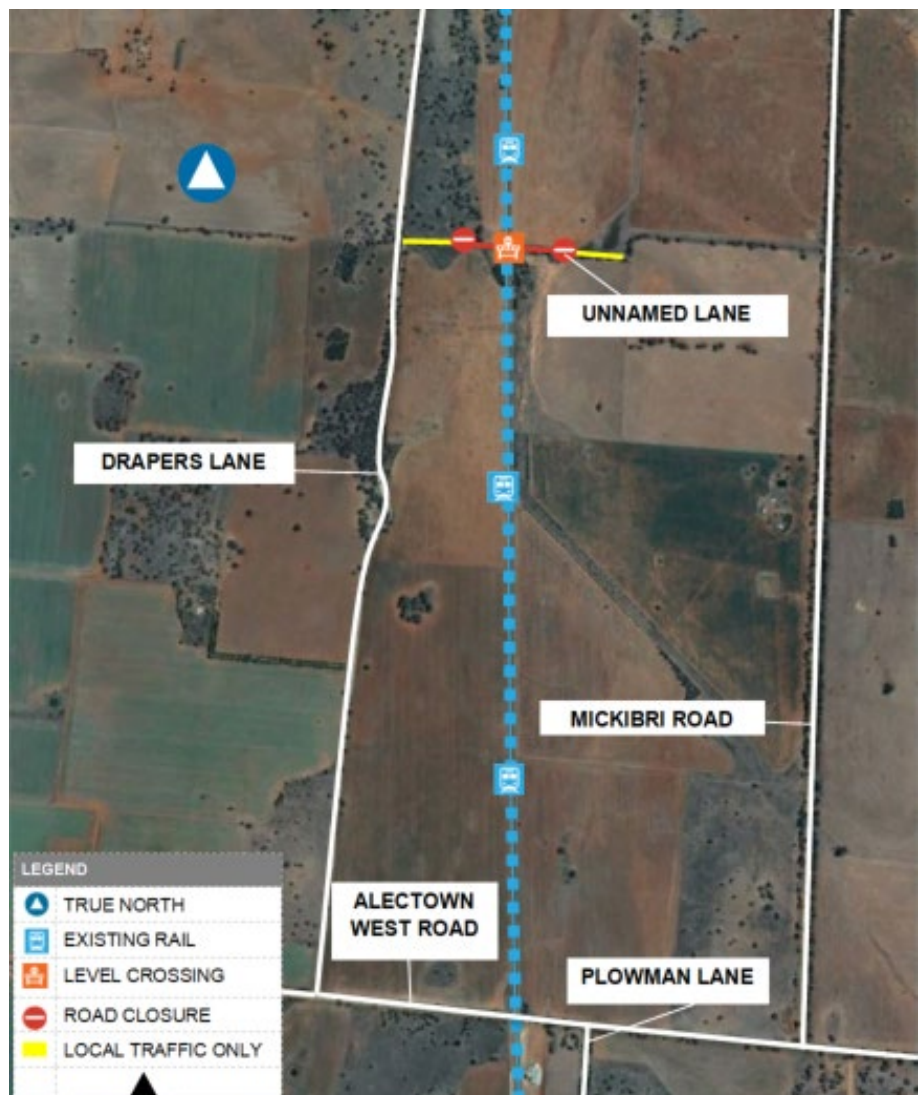
Local traffic will be maintained where ever possible.

Timing and location

Laneway closure

- Off Drapers Lane, Alectown
- From **Wednesday 10 April 2019 to end of May 2019**

More information about our work is over the page.



This is an artist impression only and is not to scale.

FOR MORE INFORMATION

Contact us via **1800 732 761**, or email inlandrailnsw@artc.com.au
Find out more on our website, inlandrail.com.au

PARKES TO NARROMINE INLAND RAIL

What we will be doing

- Remove existing rail and sleepers
- Install drainage and culverts
- Build road formations and new plate over rail
- Install new gravel (ballast), sleepers and rail, and then tamp (adjust) rail into place
- Install permanent signage and fencing

What to expect

- Signage will be in place to assist those impacted by the lane closure
- During the work there will be heavy vehicles travelling to and from the work sites
- Access to private properties will be maintained where possible across the lane closure

Work hours

Our standard working hours are between:
7:00 am to 6:00 pm Monday to Friday
8:00 am to 1:00 pm Saturday.

If work is required outside these hours, impacted residents will be notified in advance.

In some places we will be working on private property. We will consult with the landowner about the details of our work and seek permission before this occurs. ARTC and our contractors will not enter private property without landowner permission.

There will be an increase in noise and traffic movements in the area during our works. Every effort will be made to minimise impacts to the surrounding community.

We appreciate your understanding as we build this once-in-a-generation project. We can be contacted **24 hours a day, 7 days a week on 1800 732 761.**

FOR MORE INFORMATION

Contact us via **1800 732 761**, or email inlandrailnsw@artc.com.au
Find out more on our website, inlandrail.com.au

Document number: 5-0012-240-PCS-00-FS-0028