

# PARKES TO NARROMINE INLAND RAIL

**NOTIFICATION  
No. 17, April 2019**

## Heavy vehicle movements for rail construction

Inland Rail is a once-in-a-generation project connecting regional Australia to domestic and international markets. Australian Rail Track Corporation (ARTC) has engaged INLink (a joint venture between BMD Constructions and Fulton Hogan) to build the first section of Inland Rail, from Parkes to Narromine.

### From Parkes to Narromine

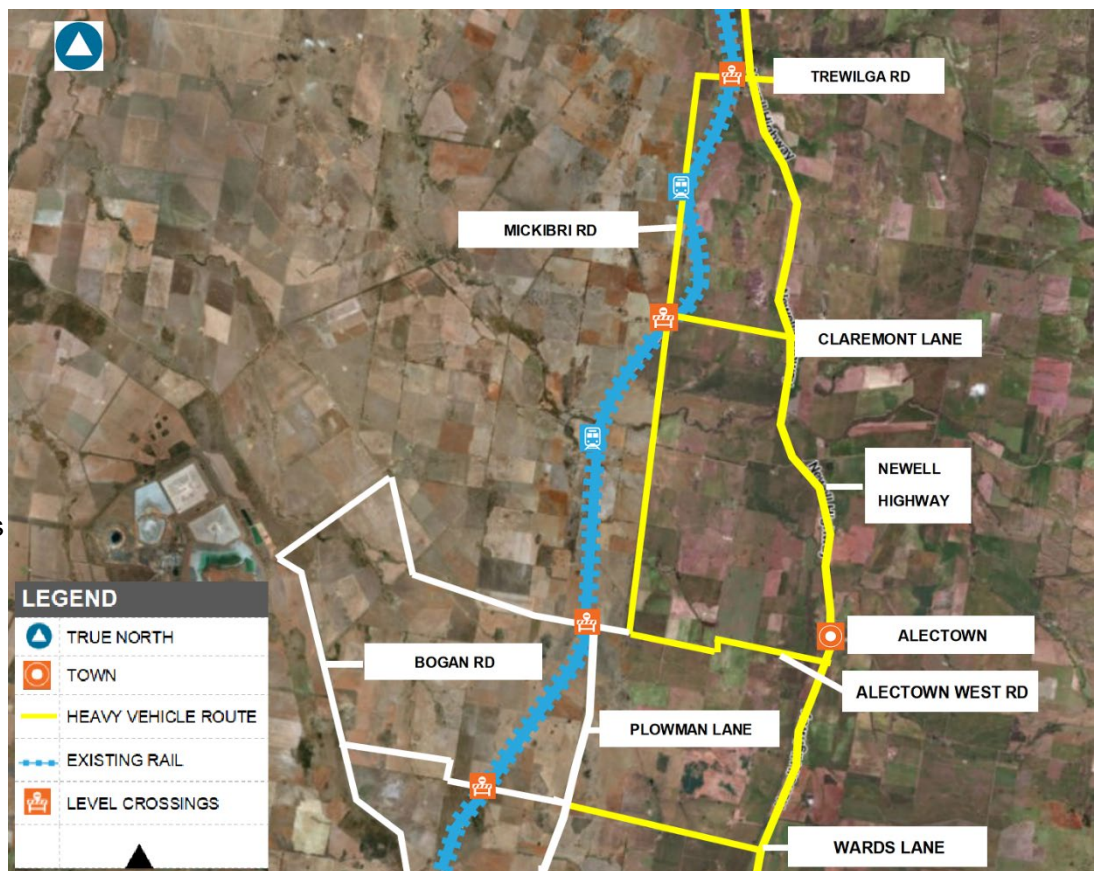
From Monday 6 May 2019 we will start building the rail formation (the supportive foundations of the track) made from soil and rock, from south of Wards Lane, Parkes, heading north to Trewilga. Between 20 to 50 trucks per day will be moving material from the quarry to our sites, traveling on the below heavy vehicle routes.

### Heavy vehicle routes – Map of heavy vehicle route from Monday 6 May until December 2019

To minimise impacts to local roads we will use National and State roads wherever possible.

We will be using the Newell Highway, Wards Lane, Alectown West Road, Claremont Lane, Mickibri Road, and Trewilga Road.

We appreciate your understanding as we build this once-in-a-generation project.



*This is an artist impression only and is not to scale.*

### FOR MORE INFORMATION

Contact us via **1800 732 761**, or email [inlandrailnsw@artc.com.au](mailto:inlandrailnsw@artc.com.au)  
Find out more on our website, [inlandrail.com.au](http://inlandrail.com.au)

Document number: 5-0012-240-PCS-00-FS-0031