

# PARKES TO NARROMINE INLAND RAIL

**NOTIFICATION 19**

## Inland Rail powerline upgrade near Bogan Road

In preparation for Inland Rail, we are lifting powerlines in the area. This is needed to allow double stacked trains to travel along the rail line. We will start this work from **Thursday 9 May 2019 until Wednesday 15 May 2019**.

Our work will be located near the railway line, south of the Bogan Road Level Crossing. Please see the map below for more information. We will start work on Inland Rail in the coming months. We will notify you again before we start.

As this work requires a shutdown of high voltage power cables, we need to do some of the work on the weekend. You will be notified by your electricity provider if your power supply is impacted.

### Our work hours

7am to 6pm Monday to Friday

7am to 5pm on Saturday and Sunday

### What we will be doing

We are lifting the powerlines in the area. We will be completing the following activities:

- Removing existing power poles and replacing with taller power poles
- Correcting the tightness of power lines.

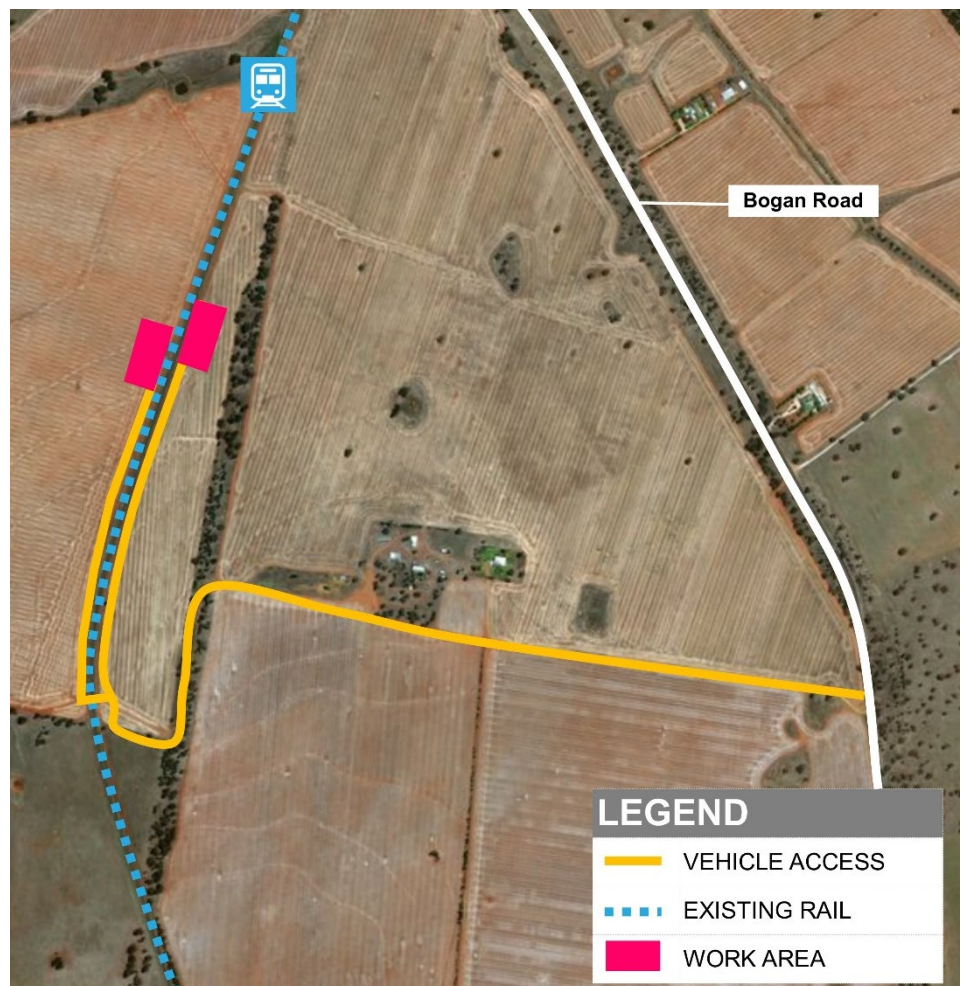
Trucks, heavy machinery and a 55 tonne crane will be used to complete this work.

We will access the site via private road off Bogan Road.

We appreciate your understanding as we build this once-in-a-generation project.

To know more please contact us **24 hours a day, 7 days a week on 1800 732 761**.

### Location of work



Document number: 5-0000-240-PCS-00-LT-0010

### FOR MORE INFORMATION

Contact us via **1800 732 761**, or email [inlandrailnsw@artc.com.au](mailto:inlandrailnsw@artc.com.au)  
Find out more on our website, [inlandrail.com.au](http://inlandrail.com.au)