

# PARKES TO NARROMINE INLAND RAIL

**NOTIFICATION  
No. 20, May 2019**

## Out of hours work on Inland Rail

Inland Rail is a once-in-a-generation project connecting regional Australia to domestic and international markets. Australian Rail Track Corporation (ARTC) has engaged INLink (a joint venture between BMD Constructions and Fulton Hogan) to upgrade and build the first section of the Inland Rail, from Parkes to Narromine.

### The North-West Connection

We are constructing 5.3km of new railway track from the existing Broken Hill Line to join the existing Parkes to Narromine railway line just south of Henry Parkes Way. This new track is called the North-West Connection.

### Out of hours work

As part of our construction work, we need to do some activities out of hours. This will be from **Saturday 25 May and Sunday 26 May 2019** intermittently until March 2020.

### Our standard working hours until mid-2020

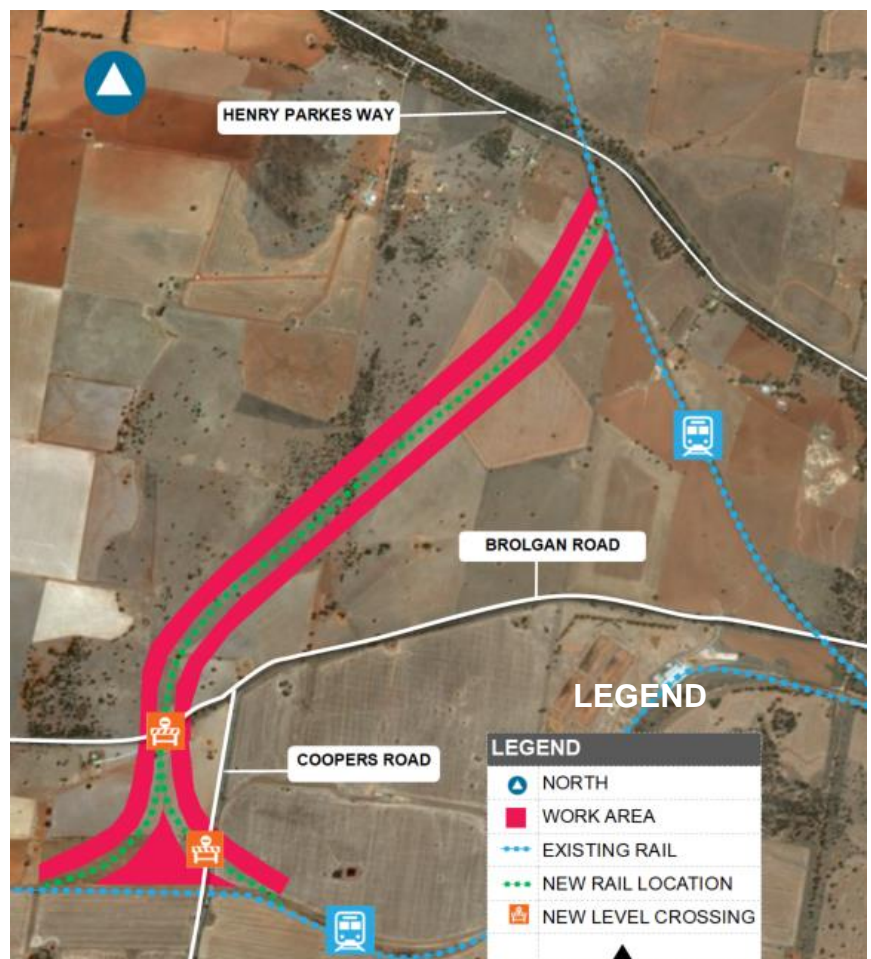
7am to 6pm Monday to Friday  
8am to 1pm Saturdays

### Out of hours until March 2020

6am to 6pm on Saturdays  
6am to 6pm Sundays

The work will take place along the 5.3km of new railway track starting from the existing Broken Hill Line heading North to join the existing Parkes to Narromine railway line (see map for details).

## Area of our works



*This is an artist impression only and is not to scale.*

## FOR MORE INFORMATION

Contact us via **1800 732 761**, or email [inlandrailnsw@artc.com.au](mailto:inlandrailnsw@artc.com.au)  
Find out more on our website, [inlandrail.com.au](http://inlandrail.com.au)

# PARKES TO NARROMINE INLAND RAIL

**NOTIFICATION**  
**May 2019**

## What we will be doing

- Building a new train line which involves earthworks – excavating, building rail formation, installing new tracks between the Broken Hill line and the Parkes to Narromine line
- Installing concrete culverts
- Level crossing installation including, excavating, installing new signals, road surfacing, line marking and concrete pours
- Installation of permanent fencing
- There will be a range of heavy vehicles and machinery operating including large trucks and excavators.

### **We will use noise minimising techniques out of hours, including but not limited to:**

- Non-tonal alarms on all vehicles and equipment
- Equipment not in use for extended periods will be switched off
- Pre-work briefs to all staff about noise minimisation.

### **Community Safety**

- All work areas will be protected or fenced to ensure safety to the public
- Our sites will be clearly signed to identify work zones, and the community will be notified where required.

In some places we will be working on private property. We will consult with the landowner about the details of our work and seek permission before this occurs. ARTC and our contractors will not enter private property without landowner permission.

There will be an increase in noise and traffic movements in the area during our works. Every effort will be made to minimise impacts to the surrounding community.

We appreciate your understanding as we build this once-in-a-generation project. We can be contacted **24 hours a day, 7 days a week on 1800 732 761.**

## FOR MORE INFORMATION

Contact us via **1800 732 761**, or email [inlandrailnsw@artc.com.au](mailto:inlandrailnsw@artc.com.au)  
Find out more on our website, [inlandrail.com.au](http://inlandrail.com.au)