

PARKES TO NARROMINE INLAND RAIL

**NOTIFICATION
No. 21, May 2019**

Level Crossing upgrade and temporary closure – Whitton Park Road

Inland Rail is a once-in-a-generation project connecting regional Australia to domestic and international markets. Australian Rail Track Corporation (ARTC) has engaged INLink (a joint venture between BMD Constructions and Fulton Hogan) to upgrade and build the first section of the Inland Rail, from Parkes to Narromine.

Temporary Road Closures

As part of our work Whitton Park Road level crossing, Peak Hill, will be temporarily closed to traffic from Monday 13 May 2019 to the end of June 2019, while we upgrade the level crossing. The upgrade will include installing booms and lights at this level crossing to make it safer to use. We will also close a section of the rail corridor (see map below and over the page). During the closure, we will have traffic management and planned detours in place.

Road Detour:

Traffic will be diverted via Atwells Lane, Coradgergy Road, Whitton Park Road and Jackson Road, while we upgrade the level crossing. We appreciate your understanding as we build this once-in-a-generation project.

DETOUR MAP



This is an artist impression only and is not to scale.

FOR MORE INFORMATION

Contact us via **1800 732 761**, or email inlandrailnsw@artc.com.au
Find out more on our website, inlandrail.com.au

The Australian Government is delivering Inland Rail through the Australian Rail Track Corporation (ARTC), in partnership with the private sector.

PARKES TO NARROMINE INLAND RAIL

NOTIFICATION
May 2019

Timing and location of Whitton Park Road and Railway Parade level crossing closure

- At the intersection of Whitton Park Road and Railway Parade, Peak Hill
- From Monday 13 May 2019 until the end of June 2019

What we will be doing

- Remove existing rail and sleepers
- Install drainage and culverts
- Build road formations and construct the level crossing (concrete treatment)
- Install new gravel (ballast), sleepers and rail, and then tamp (adjust) rail into place
- Install permanent signage and fencing.

What to expect

- Traffic management with detour signage will be in place to assist those impacted
- During the work there will be heavy vehicles travelling to and from the work sites
- Access to private properties will be maintained to either end of the road closure.

Community Safety

- All work areas will be protected or fenced to ensure safety to the public
- Our sites will be clearly signed to identify work zones, and the community will be notified where required
- Upgrading of level crossing to lights and booms to increase Safety.

Work hours

Our standard working hours are between:
7:00 am to 6:00 pm Monday to Friday
8:00 am to 1:00 pm Saturday.

If work is required outside these hours, impacted residents will be notified in advance.

In some places we will be working on private property. We will consult with the landowner about the details of our work and seek permission before this occurs. ARTC and our contractors will not enter private property without landowner permission.

There will be an increase in noise and traffic movements in the area during our works. Every effort will be made to minimise impacts to the surrounding community. We can be contacted **24 hours a day, 7 days a week on 1800 732 761.**

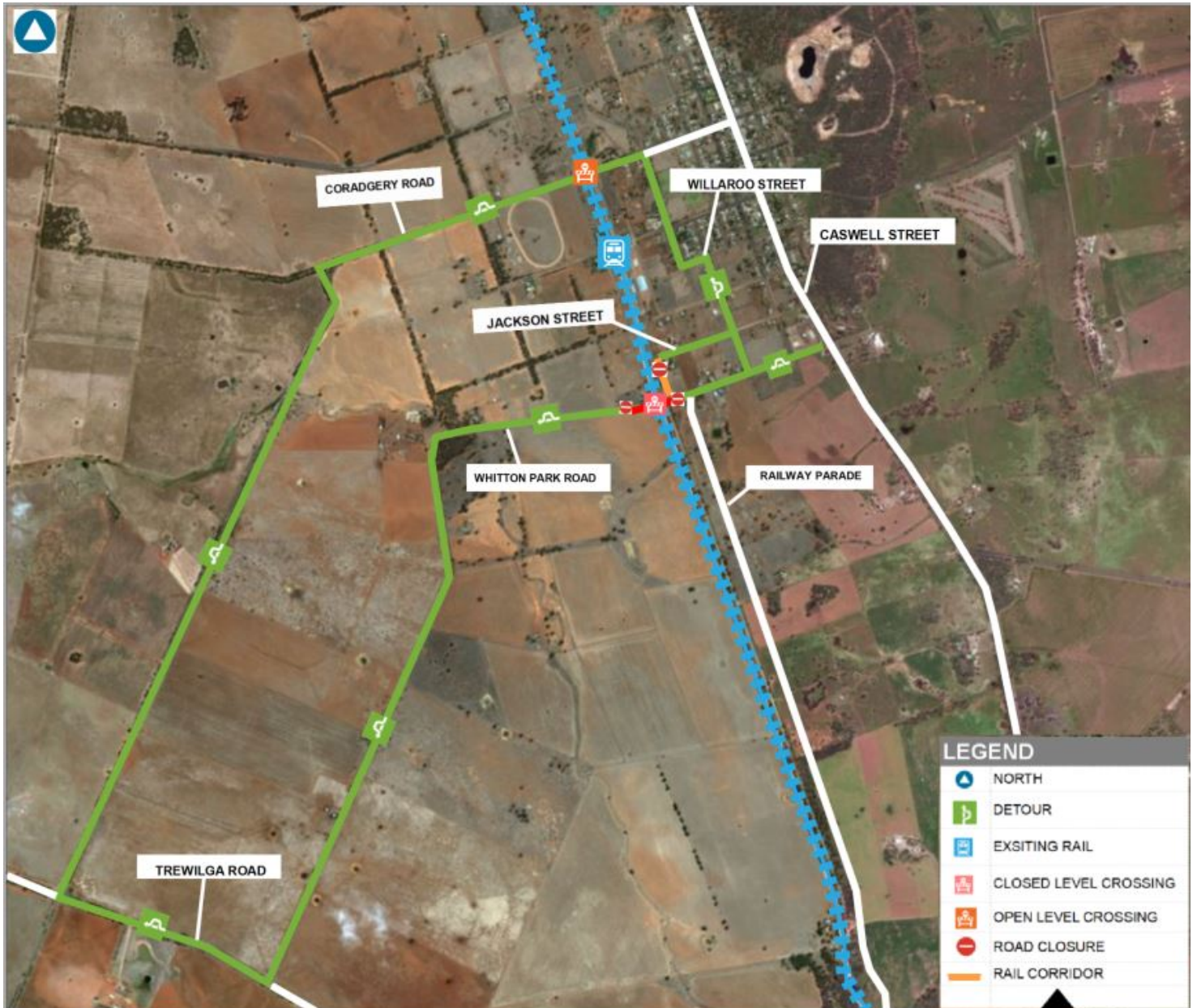
FOR MORE INFORMATION

Contact us via **1800 732 761**, or email inlandrailnsw@artc.com.au
Find out more on our website, inlandrail.com.au

**PARKES TO NARROMINE
INLAND RAIL**

**NOTIFICATION
May 2019**

Whitton Park Road detour map



FOR MORE INFORMATION

Contact us via **1800 732 761**, or email inlandrailnsw@artc.com.au
Find out more on our website, inlandrail.com.au

Document number: 5-0012-240-PCS-00-FS-0035