

P2N

PARKES TO NARROMINE

PROJECT NOTIFICATION

#23 | JUNE 2019

Level Crossing upgrades and temporary closures – Railway Parade and Taweni Road

Inland Rail is a once-in-a-generation project connecting regional Australia to domestic and international markets. Australian Rail Track Corporation (ARTC) has engaged INLink (a joint venture between BMD Constructions and Fulton Hogan) to upgrade and build the first section of the Inland Rail, from Parkes to Narromine.

What we will be doing

- ▶ Remove existing rail and sleepers
- ▶ Install drainage and culverts
- ▶ Build road formations and new plate over rail
- ▶ Install new gravel (ballast), sleepers and rail, and then tamp (adjust) rail into place
- ▶ Install permanent signage and fencing
- ▶ Install new flashing lights and booms

Temporary Road Closures

As part of the work we are upgrading level crossings between Parkes and Narromine. While we do this, we need to temporarily close public roads.

Timing and location of works:

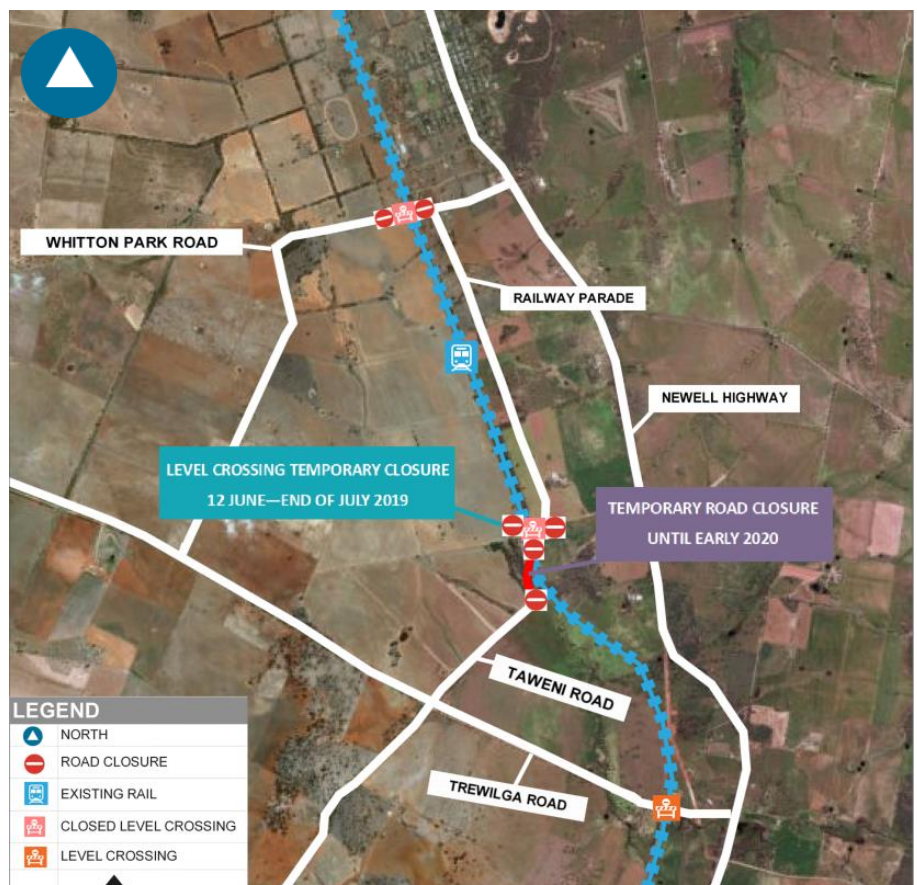
Taweni Road Level Crossing (Cookies Crossing) temporary closure

- ▶ Between Railway Parade and Taweni Road
- ▶ From **Wednesday 12 June 2019 to end July 2019**

Please note: the roadway between Railway Parade and Taweni Road has been temporarily closed from early April until early 2020.

Road upgrade map

(This is an artist's impression only and is not to scale.)



WANT TO KNOW MORE?

For more information, please contact us via phone number or email address. You can also find out more on the Inland Rail website

1800 732 761 (24 hours, 7 days)

inlandrailnsw@artc.com.au

inlandrail.com.au

What to expect

- ▶ Traffic management with detour signage will be in place to assist those impacted
- ▶ During the work there will be heavy vehicles travelling to and from the work sites
- ▶ Access to private properties will be maintained to either end of the road closure

Community Safety

- ▶ All work areas will be protected or fenced to ensure safety to the public
- ▶ Our sites will be clearly signed to identify work zones, and the community will be notified where required
- ▶ Upgrading of level crossing to lights and booms to increase Safety

Work hours

Our standard working hours are between:

7:00 am to 6:00 pm Monday to Friday

8:00 am to 1:00 pm Saturday.

If work is required outside these hours, impacted residents will be notified in advance.

We appreciate your understanding as we build this once-in-a-generation project. We can be contacted **24 hours a day, 7 days a week on 1800 732 761.**

WANT TO KNOW MORE?

For more information, please contact us via phone number or email address. You can also find out more on the Inland Rail website

 1800 732 761 (24 hours, 7 days)

 inlandrailnsw@artc.com.au

inlandrail.com.au