

# P2N

## PARKES TO NARROMINE

**PROJECT NOTIFICATION**  
#29 | JUNE 2019

### Level Crossing upgrades and temporary closures – Trewilga Road

Inland Rail is a once-in-a-generation project connecting regional Australia to domestic and international markets. Australian Rail Track Corporation (ARTC) has engaged INLink (a joint venture between BMD Constructions and Fulton Hogan) to upgrade and build the first section of the Inland Rail, from Parkes to Narromine.

### Temporary Road Closures

As part of the work we are upgrading level crossings between Parkes and Narromine. While we do this, we need to temporarily close public roads.

### Timing and location of works:

Before this closure, Mickibri and Whitton Park Road level crossings will be reopened.

#### Trewilga Road, Trewilga

- ▶ Trewilga Road, South
- ▶ From **Monday 8 July 2019** until late August 2019.

#### Road detour:

- ▶ South via Mickibri Road and Claremont Road, and Newell Highway.
- ▶ North via Trewilga Road, Whitton Park Road, and Newell Highway.

### What we will be doing

- ▶ Removing existing rail and sleepers
- ▶ Install drainage and culverts

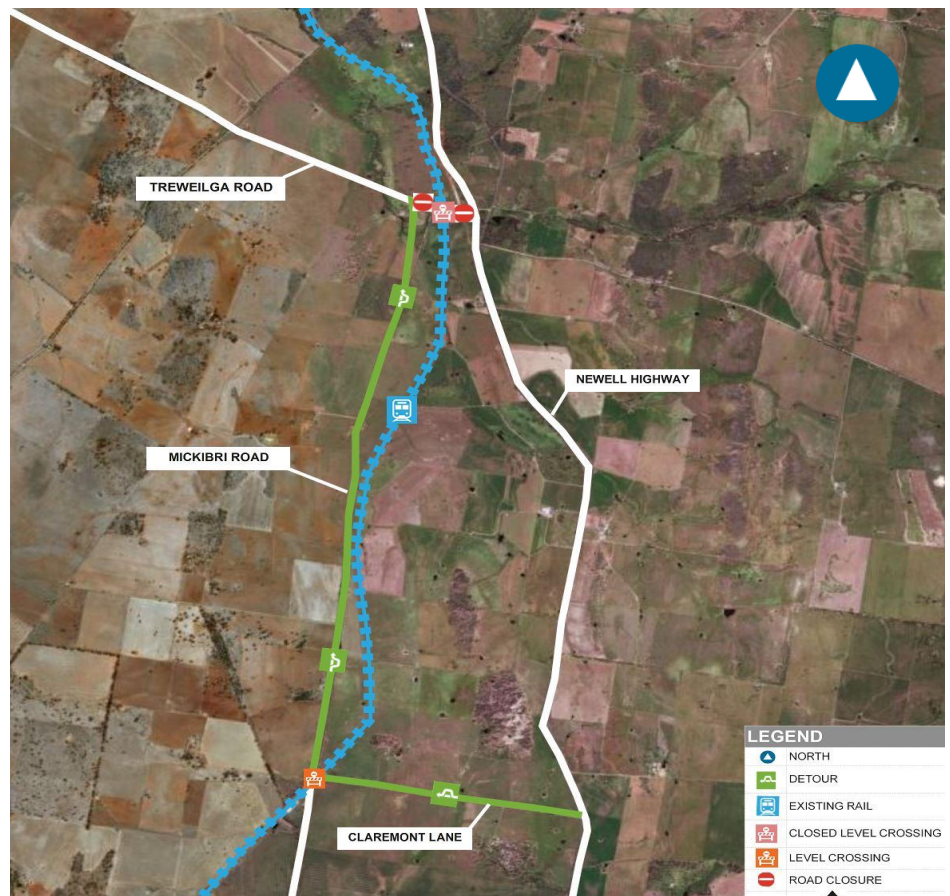
- ▶ Build road formations, with sealed road over the level crossing
- ▶ Install new gravel (ballast), sleepers and rail, and then tamp (adjust) rail into place
- ▶ Installing fences and permanent signage.

### What to expect

- ▶ Traffic management with detour signage will be in place to assist those impacted
- ▶ During the work there will be heavy vehicles travelling to and from the work sites
- ▶ Access to private properties will be maintained

### Detour Map South

(This is an artist's impression only and is not to scale.)



### WANT TO KNOW MORE?

For more information, please contact us via phone number or email address. You can also find out more on the Inland Rail website

1800 732 761 (24 hours, 7 days)

inlandrailnsw@artc.com.au

[inlandrail.com.au](http://inlandrail.com.au)

Document number: 5-0012-240-PCS-00-FS-0040

The Australian Government is delivering Inland Rail through the Australian Rail Track Corporation (ARTC), in partnership with the private sector.

- ▶ A second short term closure will be required for the final rail works to be completed in the future.

### Community Safety

- ▶ All work areas will be protected or fenced to ensure safety to the public
- ▶ Our sites will be clearly signed to identify work zones, and the community will be notified where required
- ▶ Upgrading of level crossing to lights and booms to increase Safety.

### Work hours

Our standard working hours are between:  
7:00 am to 6:00 pm Monday to Friday  
8:00 am to 1:00 pm Saturday.

If work is required outside these hours, impacted residents will be notified in advance.

We appreciate your understanding as we build this once-in-a-generation project. We can be contacted **24 hours a day, 7 days a week on 1800 732 761.**

### Detour Map North

(This is an artist's impression only and is not to scale.)



### WANT TO KNOW MORE?

For more information, please contact us via phone number or email address. You can also find out more on the Inland Rail website

📞 1800 732 761 (24 hours, 7 days)

✉️ inlandrailnsw@artc.com.au

[inlandrail.com.au](http://inlandrail.com.au)