

# P2N

## PARKES TO NARROMINE

### PROJECT NOTIFICATION

#35 | JULY 2019

### Out of hours work on Inland Rail

Inland Rail is a once-in-a-generation project connecting regional Australia to domestic and international markets. Australian Rail Track Corporation (ARTC) has engaged INLink (a joint venture between BMD Constructions and Fulton Hogan) to upgrade and build the first section of the Inland Rail, from Parkes to Narromine.

### Out of hours work

As part of our construction work, we need to do some activities out of hours. This will be intermittently on weekends from Saturday 27 July 2019 until late October 2019. The works will be from Bogan Road, Goonumbra to Narwonah silos, Narwonah.

### Our standard working hours until mid-2020

- ▶ 7am to 6pm Monday to Friday
- ▶ 8am to 1pm Saturdays

### Intermittent weekend out of hours works from Saturday 27 July 2019 until late October 2019

- ▶ 6am to 6pm Saturdays
- ▶ 6am to 6pm Sundays

### What we will be doing

- ▶ Install new gravel (ballast), sleepers and rail, and then tamp (adjust) rail into place. Activities such as ballast deliveries and tamping may create noise and vibrations. This work will progress along the rail corridor
- ▶ Importing material to site
- ▶ Use of machinery in the works area. Machinery may include excavators, loaders, tamping machine, dump trucks, rollers, graders, water carts, regulators, rail saw, rail grinders and cranes

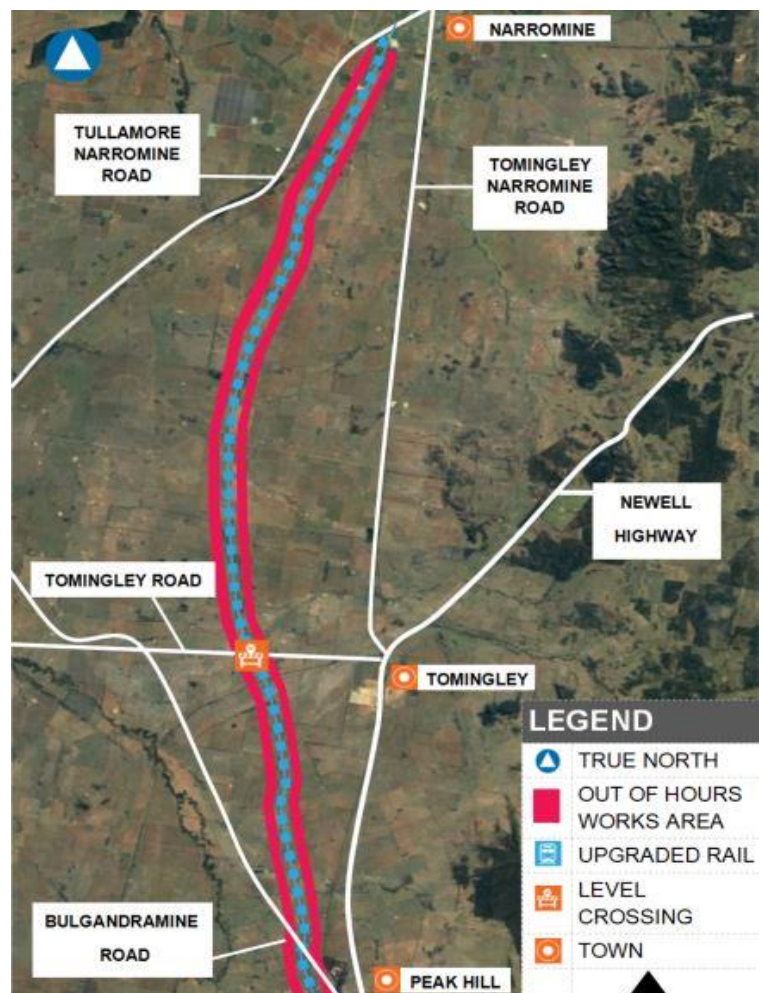
- ▶ Importing and moving material around the site.

### We will use noise minimising techniques out of hours, including but not limited to:

- ▶ Non-tonal alarms on all vehicles and equipment
- ▶ Equipment not in use for extended periods will be switched off
- ▶ Pre-work briefs to all staff about noise minimisation.

### Out of hours work area

(This is an artist's impression only and is not to scale.)



### WANT TO KNOW MORE?

For more information, please contact us via phone number or email address. You can also find out more on the Inland Rail website

📞 1800 732 761 (24 hours, 7 days)

✉ inlindrailnsw@artc.com.au

[inlindrail.com.au](http://inlindrail.com.au)

## Future level crossing closures

There will be future level crossing closures during our work. We will notify impacted landowners before these closures occur.

Roads that may be impacted include Bulgandramine Road, Kittos Bridge Road, Barrabadeen Road, Sharah's Access Road, Tomingley West Road, Tinks Lane, Wyanga Road, Fairview Siding Road, Hargreaves Road, Haberworth Lane and Narwonah Siding Road.

Some temporary closures and detours will be in place to allow for the works to be completed.

## Community Safety

- ▶ All work areas will be protected or fenced to ensure safety to the public
- ▶ Our sites will be clearly signed to identify work zones, and the community will be notified where required.

We appreciate your understanding as we build this once-in-a-generation project. We can be contacted **24 hours a day, 7 days a week on 1800 732 761.**

## WANT TO KNOW MORE?

For more information, please contact us via phone number or email address. You can also find out more on the Inland Rail website

 1800 732 761 (24 hours, 7 days)

 [inlandrailnsw@artc.com.au](mailto:inlandrailnsw@artc.com.au)

[inlandrail.com.au](http://inlandrail.com.au)