

# P2N

## PARKES TO NARROMINE

### PROJECT NOTIFICATION

#39 | AUGUST 2019

### Level Crossing Upgrade and Temporary Closure – Unnamed Lane

Inland Rail is a once-in-a-generation project connecting regional Australia to domestic and international markets. Australian Rail Track Corporation (ARTC) has engaged

INLink (a joint venture between BMD Constructions and Fulton Hogan) to upgrade and build the first section of the Inland Rail, from Parkes to Narromine.

### Temporary Road Closure

As part of our construction work, we are upgrading level crossings between Parkes and Narromine. While we do this, we need to temporarily close some public roads.

This second closure is required to install the new rail through the level crossing. Please find attached to this notification a fact sheet with more information about this work.

This follows on from the first closure where we upgraded the level crossing. This included constructing the formation of the rail line and road (earthworks) and installing drainage structures (culverts).

### Timing and location of works:

Unnamed Lane, Alectown;

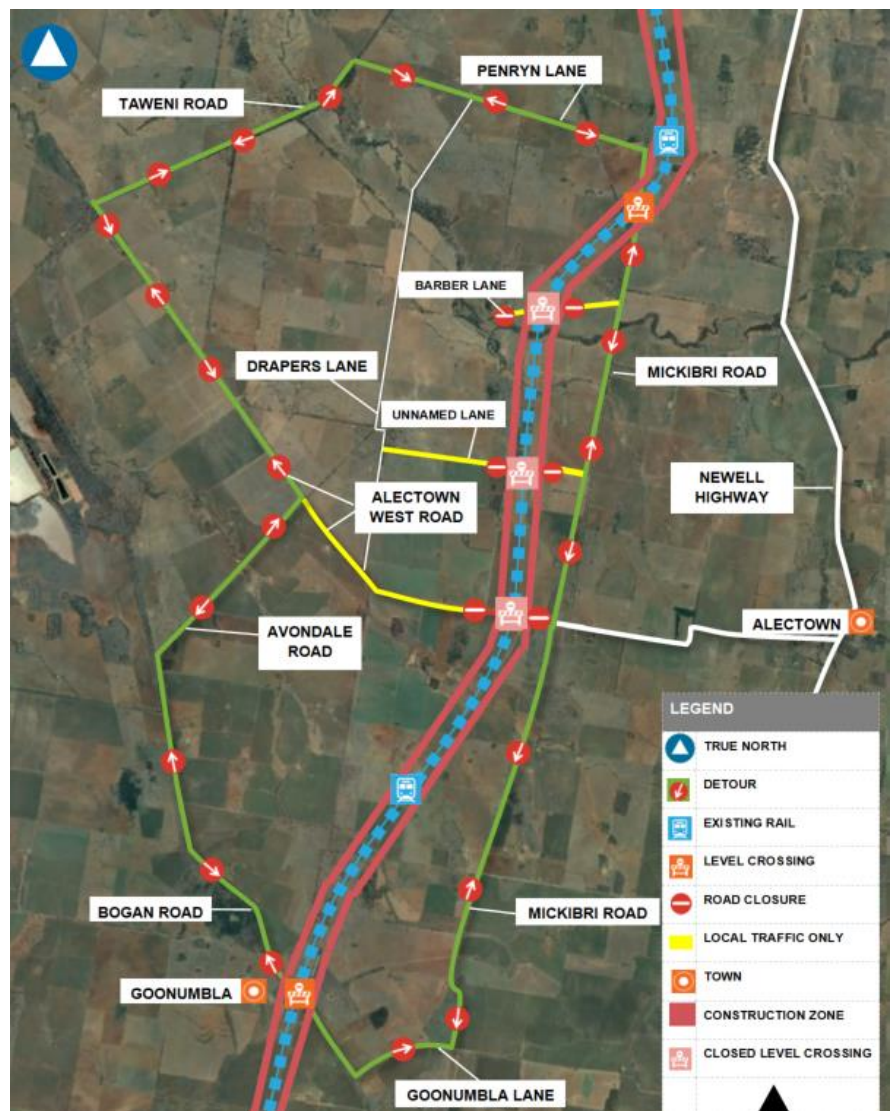
- ▶ Between Drapers Lane and Mickibri Road, Alectown
- ▶ From **Tuesday 20 August 2019 to early November 2019.**
- ▶ As soon as works are complete, the road will be reopened.

### What we will be doing

- ▶ Build road formations and new plate over rail
- ▶ Install new gravel (ballast), sleepers and rail, and then tamp (adjust) rail into place
- ▶ Install permanent signage and fencing

### Works location map

(This is an artist's impression only and is not to scale)



### WANT TO KNOW MORE?

For more information, please contact us via phone number or email address. You can also find out more on the Inland Rail website

📞 1800 732 761 (24 hours, 7 days)

✉ inlandrailnsw@artc.com.au

[inlandrail.com.au](http://inlandrail.com.au)

Document number: 5 0012 240 PCS 00 FS 0065

The Australian Government is delivering Inland Rail through the Australian Rail Track Corporation (ARTC), in partnership with the private sector.

Once rail has been installed in each section, the rail will be 'live' and construction trains will be using it. For your continued safety, please ensure you are stopping at level crossings

### **What to expect**

- ▶ During the work there will be heavy vehicles travelling to and from the work sites
- ▶ Access to private properties will be maintained

### **Community safety**

- ▶ All work areas will be protected or fenced to ensure safety to the public
- ▶ Our sites will be clearly signed to identify work zones, and the community will be notified where required
- ▶ Traffic will be maintained with traffic controllers conducting stop and go

### **Work hours**

Our standard working hours until mid-2020:

- ▶ 7:00 am to 6:00 pm Monday to Friday
- ▶ 8:00 am to 1:00 pm Saturday.

Intermittent weekend out of hours work from until late October 2019

- ▶ 6am to 6pm Saturdays
- ▶ 6am to 6pm Sundays

If work is required outside these hours, impacted residents will be notified in advance.

We appreciate your understanding as we build this once-in-a-generation project. We can be contacted **24 hours a day, 7 days a week on 1800 732 761.**

### **WANT TO KNOW MORE?**

For more information, please contact us via phone number or email address. You can also find out more on the Inland Rail website

 1800 732 761 (24 hours, 7 days)

 [inlandrailnsw@artc.com.au](mailto:inlandrailnsw@artc.com.au)

[inlandrail.com.au](http://inlandrail.com.au)