

P2N

PARKES TO NARROMINE

PROJECT NOTIFICATION

#43 | AUGUST 2019

Level Crossing upgrades and temporary closures – Sarah’s Access Road

Inland Rail is a once-in-a-generation project connecting regional Australia to domestic and international markets. Australian Rail Track Corporation (ARTC) has engaged INLink (a joint venture between BMD Constructions and Fulton Hogan) to upgrade and build the first section of the Inland Rail, from Parkes to Narromine.

Temporary road closures

As part of the work we are upgrading level crossings between Parkes and Narromine.

While we do this, we need to temporarily close public roads.

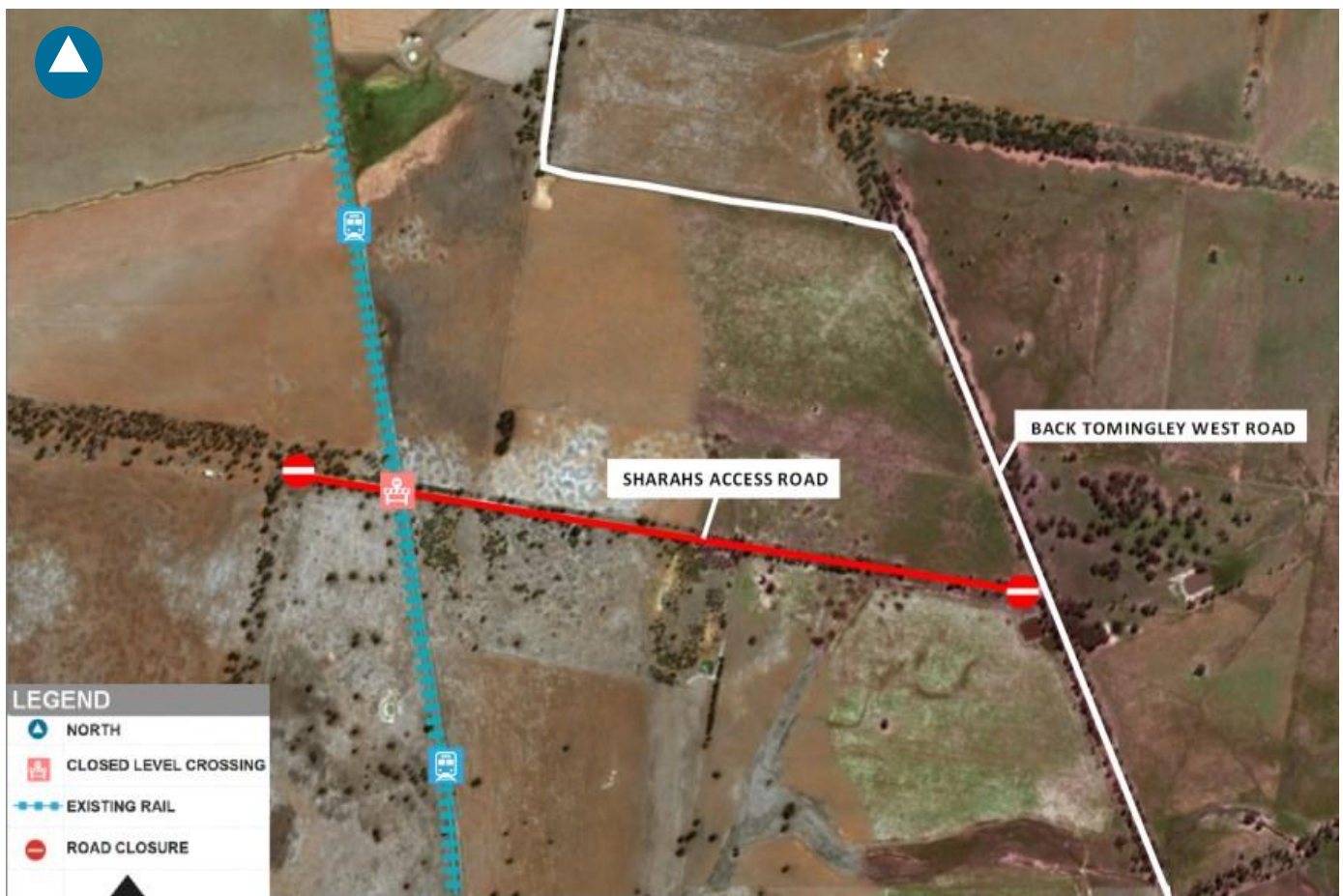
Timing and location of works:

Sarah’s Access Road, Tomingley

- ▶ Off Back Tomingley West Road, Tomingley

Detour map

(This is an artist’s impression only and is not to scale.)



WANT TO KNOW MORE?

For more information, please contact us via phone number or email address. You can also find out more on the Inland Rail website

1800 732 761 (24 hours, 7 days)

inlandrailnsw@artc.com.au

inlandrail.com.au

- ▶ From **Monday 26 August 2019 until end-October 2019**
- ▶ Local Traffic only to access Sarah's Access Road, Tomingley

What we will be doing

- ▶ Remove existing rail and sleepers
- ▶ Installing drainage and culverts
- ▶ Building road formations
- ▶ Constructing level crossing (concrete treatment)
- ▶ Installing new gravel (ballast), sleepers and rail, and then tamp (adjust) rail into place
- ▶ Install fences and permanent signage

What to expect

- ▶ Traffic management with detour signage will be in place to assist those impacted
- ▶ During the work there will be heavy vehicles travelling to and from the work sites
- ▶ Access to private properties will be maintained
- ▶ A second closure will be required for the final rail works to be completed in the future

Community safety

- ▶ All work areas will be protected or fenced to ensure safety to the public
- ▶ Our sites will be clearly signed to identify work zones, and the community will be notified where required
- ▶ We will be upgrading of level crossing and installing stop signs to ensure community safety

Work hours

Our standard working hours are between:
7:00 am to 6:00 pm Monday to Friday
8:00 am to 1:00 pm Saturday

If work is required outside these hours, impacted residents will be notified in advance.

We appreciate your understanding as we build this once-in-a-generation project. We can be contacted **24 hours a day, 7 days a week on 1800 732 761.**

WANT TO KNOW MORE?

For more information, please contact us via phone number or email address. You can also find out more on the Inland Rail website

 1800 732 761 (24 hours, 7 days)

 inlandrailnsw@artc.com.au

inlandrail.com.au

Document number: 5-0012-240-PCS-00-FS-0052

The Australian Government is delivering Inland Rail through the Australian Rail Track Corporation (ARTC), in partnership with the private sector.