

# P2N

## PARKES TO NARROMINE

**PROJECT NOTIFICATION**

**#68 | NOVEMBER 2019**

### Level Crossing upgrade and temporary closure – Barrabadeen Creek Road, Peak Hill

Inland Rail is a once-in-a-generation project connecting regional Australia to domestic and international markets. Australian Rail Track Corporation (ARTC) has engaged INLink (a joint venture between BMD Constructions and Fulton Hogan) to upgrade and build the first section of the Inland Rail, from Parkes to Narromine.

#### Temporary road closure

As part of our construction work, we are upgrading level crossings between Parkes and Narromine. While we do this, we need to temporarily close level crossings. **Barrabadeen Creek Road closure will be extended to install the new rail, eliminating the need for a second closure** in the future. Barrabadeen Creek Road will now remain closed until **end December 2019**.

Local traffic will be maintained wherever possible.

#### Timing and location of works:

Barrabadeen Creek Road, Peak Hill

- ▶ Barrabadeen Creek Road between Bulgandramine Road and Newell Highway, Peak Hill
- ▶ Extended to **end December 2019**
- ▶ As soon as works are complete, the road will be reopened.

#### What we will be doing

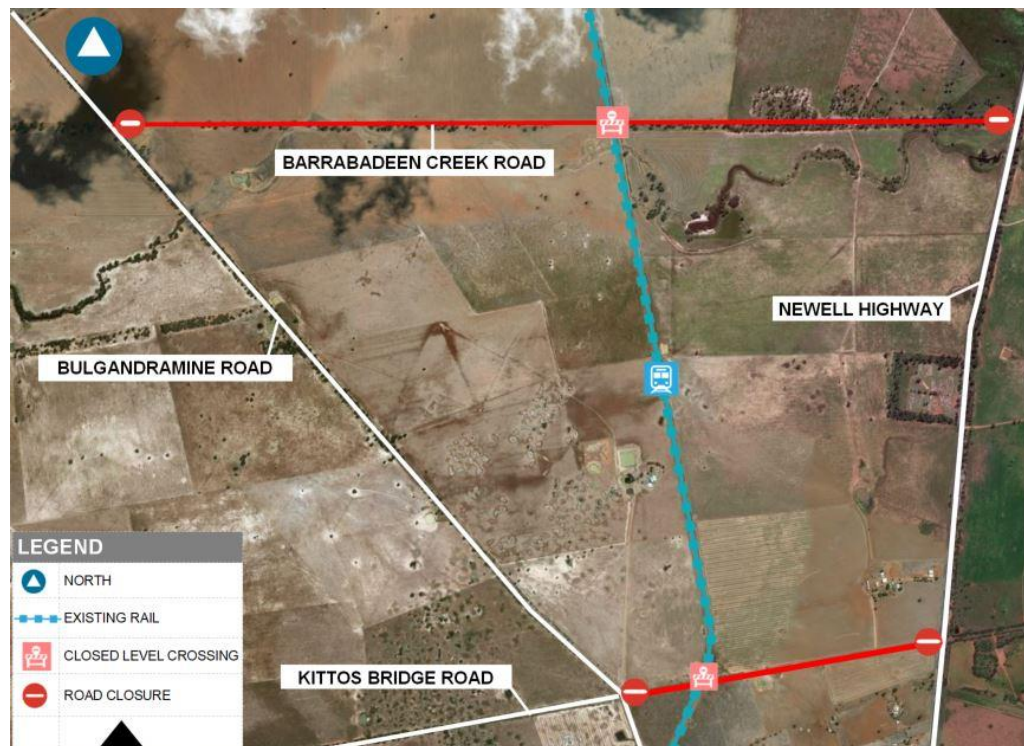
- ▶ Laying new rail and sleepers
- ▶ Build road formations and new plate over rail
- ▶ Welding rail into place
- ▶ Install new gravel (ballast), tamp (adjust) rail into place
- ▶ Install permanent signage and fencing

#### What to expect

- ▶ During the work there will be heavy vehicles travelling to and from the work sites
- ▶ Traffic management with detour signage will be in place to assist those impacted by the road closure.

#### Detour map

(This is an artist's impression only and is not to scale)



#### WANT TO KNOW MORE?

For more information, please contact us via phone number or email address. You can also find out more on the Inland Rail website

1800 732 761 (24 hours, 7 days)

inlandrailnsw@artc.com.au

[inlandrail.com.au](http://inlandrail.com.au)

## Community safety

- ▶ All work areas will be protected or fenced to ensure safety to the public
- ▶ Our sites will be clearly signed to identify work zones, and the community will be notified where required
- ▶ Once rail has been installed in each section, the rail will be 'live' and construction trains will be intermittently passing across the level crossing. For your continued safety, please ensure you obey all signage at level crossings.

## Work hours

Our standard working hours until mid-2020:

- ▶ 7:00 am to 6:00 pm Monday to Friday
- ▶ 8:00 am to 1:00 pm Saturday.

If work is required outside these hours, impacted residents will be notified in advance.

We appreciate your understanding as we build this once-in-a-generation project. We can be contacted **24 hours a day, 7 days a week on 1800 732 761.**

## WANT TO KNOW MORE?

For more information, please contact us via phone number or email address. You can also find out more on the Inland Rail website

 1800 732 761 (24 hours, 7 days)

 [inlandrailnsw@artc.com.au](mailto:inlandrailnsw@artc.com.au)

[inlandrail.com.au](http://inlandrail.com.au)