

PARKES TO NARROMINE INLAND RAIL

**NOTIFICATION
No.7, February 2019**

Start of construction on Inland Rail

Inland Rail is a once-in-a-generation project connecting regional Australia to domestic and international markets. It will complete the spine of the national freight network between Melbourne and Brisbane.

Australian Rail Track Corporation (ARTC) has engaged INLink (a joint venture between BMD Constructions and Fulton Hogan) to upgrade and build the first section of the Inland Rail, from Parkes to Narromine.

Start of construction

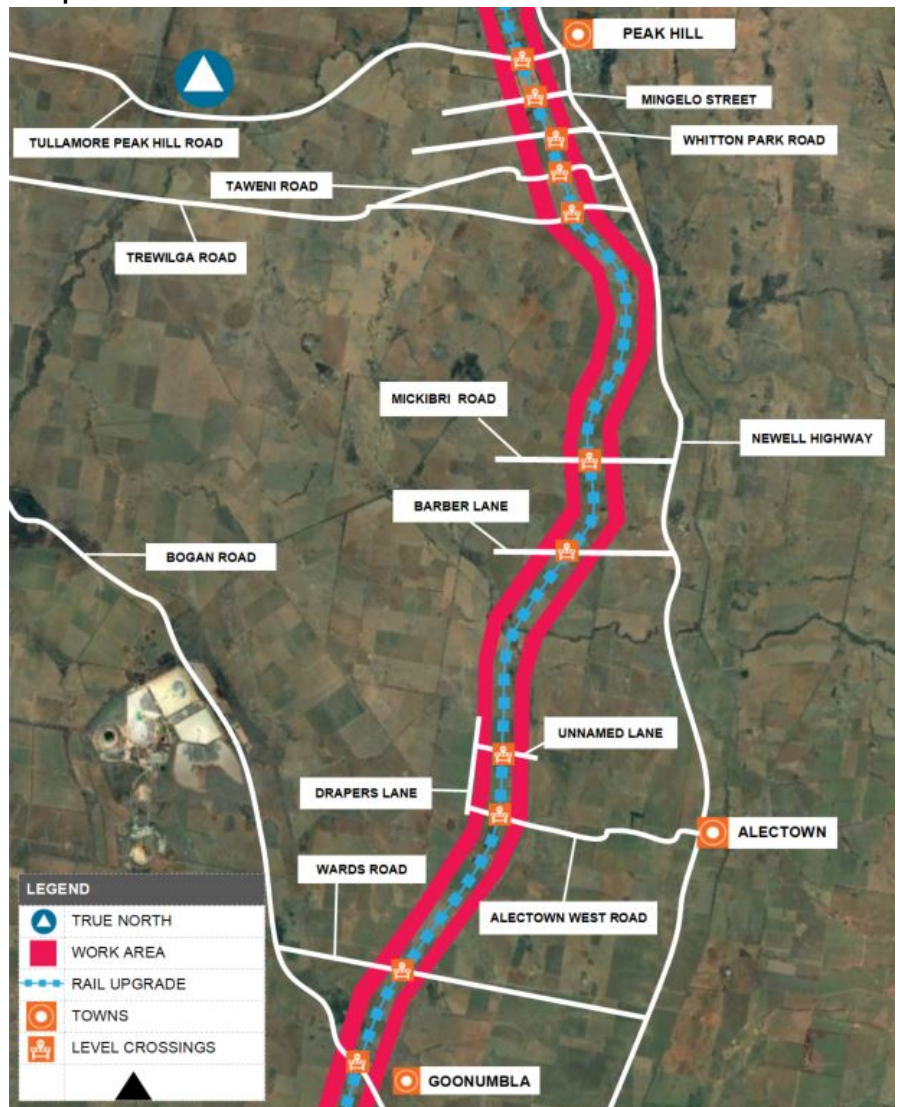
Following on from our low impact works, we will be starting construction along the railway line between Bogan Road, Goonumbla and Tullamore Road, Peak Hill from **Monday 18 February 2019**.

We expect to finish all work on Inland Rail by mid-2020.

What we will be doing

- Removing the existing railway line, sleepers, ballast and formation
- Rebuilding with new formation, ballast, concrete sleepers and tracks
- Installing new concrete culverts
- Upgrading public level crossings
- Upgrading and in some cases with landowner permission removing private level crossings
- There will be a range of heavy vehicles and machinery operating including large trucks travelling to and from the corridor and machinery such as excavators operating.

Map of work area



FOR MORE INFORMATION

Contact us via **1800 732 761**, or email inlandrailnsw@artc.com.au
Find out more on our website, inlandrail.com.au

PARKES TO NARROMINE INLAND RAIL

**NOTIFICATION
No.7, February 2019**

What we will be doing (continued)

Temporary road detours and closures from late February 2019

- We will be upgrading public level crossings including Wards Lane, Alectown West Road, Unnamed Road (off Drapers Lane), Barbers Lane, Mickibri Road, Trewilga Road, Taweni Road, Whitton Park Road, Mingelo Street, and Tullamore - Peak Hill Road. Some temporary closures and detours will be temporarily in place to allow for the works to be completed
- We will work with landowners and groups that are immediately impacted by these works, on both private and public level crossings
- When we upgrade level crossings we will install signage and notify affected road users before any temporary road closures or detours occur

Vegetation removal and fencing

- Removing trees and shrubs in the road and railway corridor
- Installing temporary and permanent fencing around our work

Environmental management

- Fauna spotters will be used for native animal safety during work
- Environmental monitoring including noise, air quality and vibration.

Work hours

Our standard working hours are between:
7:00 am to 6:00 pm Monday to Friday
8:00 am to 1:00 pm Saturday.

If work is required outside these hours, impacted residents will be notified in advance.

In some places we will be working on private property. We will consult with the landowner about the details of our work and seek permission before this occurs. ARTC and our contractors will not enter private property without landowner permission.

There will be an increase in noise and traffic movements in the area during our works. Every effort will be made to minimise impacts to the surrounding community.

We appreciate your understanding as we build this once-in-a-generation project. We can be contacted **24 hours a day, 7 days a week on 1800 732 761.**

FOR MORE INFORMATION

Contact us via **1800 732 761**, or email inlandrailnsw@artc.com.au
Find out more on our website, inlandrail.com.au

Document number: 5-0012-240-PCS-00-FS-0014