

P2N

PARKES TO NARROMINE

PROJECT NOTIFICATION

#83 | JANUARY 2020

Out of hours work on Inland Rail – Trewilga Road, Trewilga to Kittos Bridge Road, Peak Hill

Inland Rail is a once-in-a-generation project connecting regional Australia to domestic and international markets. Australian Rail Track Corporation (ARTC) has engaged INLink (a joint venture between BMD Constructions and Fulton Hogan) to upgrade and build the first section of the Inland Rail, from Parkes to Narromine.

Out of hours work

As part of our construction work, we will be doing some activities out of hours. They include **Australia Day Sunday 26 January and Australia Day Public Holiday Monday 27 January 2020.**

The work will be between Taweni Road and Whitton Park Road, and Bulgandramine Road to Kittos Bridge Road. There will be no work within Peak Hill township on Australia Day.

Our working hours on Sunday 26 January and Monday 27 January 2020 will be from 6am to 6pm

Intermittent out of hours works until mid-2020

- ▶ 6am to 6pm Monday to Friday
- ▶ 6am to 6pm Saturdays and Sundays

Our standard working hours until mid-2020

- ▶ 7am to 6pm Monday to Friday
- ▶ 8am to 1pm Saturdays

What we will be doing

Rail works include;

- ▶ Cutting the rail at the stressing location, unclip the rail from the sleepers, tensioning the rail with hydraulic jacks, clipping up the rail to the sleepers, and welding the rail at the cut location

- ▶ Install new gravel (ballast), sleepers and rail, and then tamp (adjust) rail into place. Activities such as ballast deliveries and tamping may create noise and vibrations

Signalling works include;

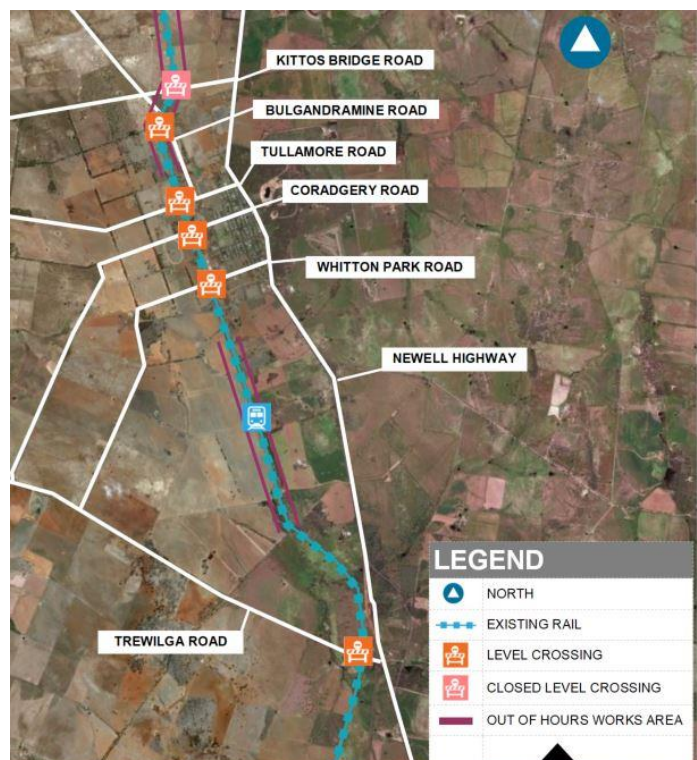
- ▶ Cable hauling, cable installation, boom gate changeover, signage posts installation

Use of machinery in the works area may include;

- ▶ Ballast train, excavators, loaders, tamping machine, dump trucks, light vehicles, rollers, graders, water carts, regulators, rail saw, rail grinders, cranes, small petrol-powered clipping machines, rail tensors, vac truck, welding machinery, and hand tools

Out of hours work map

(This is an artist's impression only and is not to scale.)



WANT TO KNOW MORE?

For more information, please contact us via phone number or email address. You can also find out more on the Inland Rail website

📞 1800 732 761 (24 hours, 7 days)

✉ inlandrailnsw@artc.com.au

inlandrail.com.au

We will use noise minimising techniques out of hours, including but not limited to:

- ▶ Non-tonal alarms on all vehicles and equipment
- ▶ Equipment not in use for extended periods will be switched off
- ▶ Pre-work briefs to all staff about noise minimisation


Community safety

- ▶ All work areas will be protected or fenced to ensure safety to the public
- ▶ Our sites will be clearly signed to identify work zones, and the community will be notified where required
- ▶ Once rail has been installed in each section, the rail will be 'live' and construction trains will be intermittently passing across the level crossing. For your continued safety, please ensure you obey all signage at level crossings.

We appreciate your understanding as we build this once-in-a-generation project. We can be contacted **24 hours a day, 7 days a week on 1800 732 761.**

WANT TO KNOW MORE?

For more information, please contact us via phone number or email address. You can also find out more on the Inland Rail website

 1800 732 761 (24 hours, 7 days)

 inlandrailnsw@artc.com.au

inlandrail.com.au