

PARKES TO NARROMINE INLAND RAIL

**NOTIFICATION
No.9, February 2019**

Out-of-hours work on Inland Rail

Inland Rail is a once-in-a-generation project connecting regional Australia to domestic and international markets. Australian Rail Track Corporation (ARTC) has engaged INLink (a joint venture between BMD Constructions and Fulton Hogan) to build the first section of Inland Rail, from Parkes to Narromine.

Out-of-hours work

As part of our construction work we need to do some activities out of hours. This will be from Saturday 9 March intermittently until late April 2019. This is from north of Bogan Road, Goonumbla to Tullamore-Peak Hill Road, Peak Hill.

Our standard working hours until mid-2020

- 7am to 6pm on Monday to Friday
- 8am to 1pm Saturdays

Out of hours work until late April 2019

- 6am to 6pm on Saturdays
- 6am to 6pm Sundays

What we will be doing out of hours

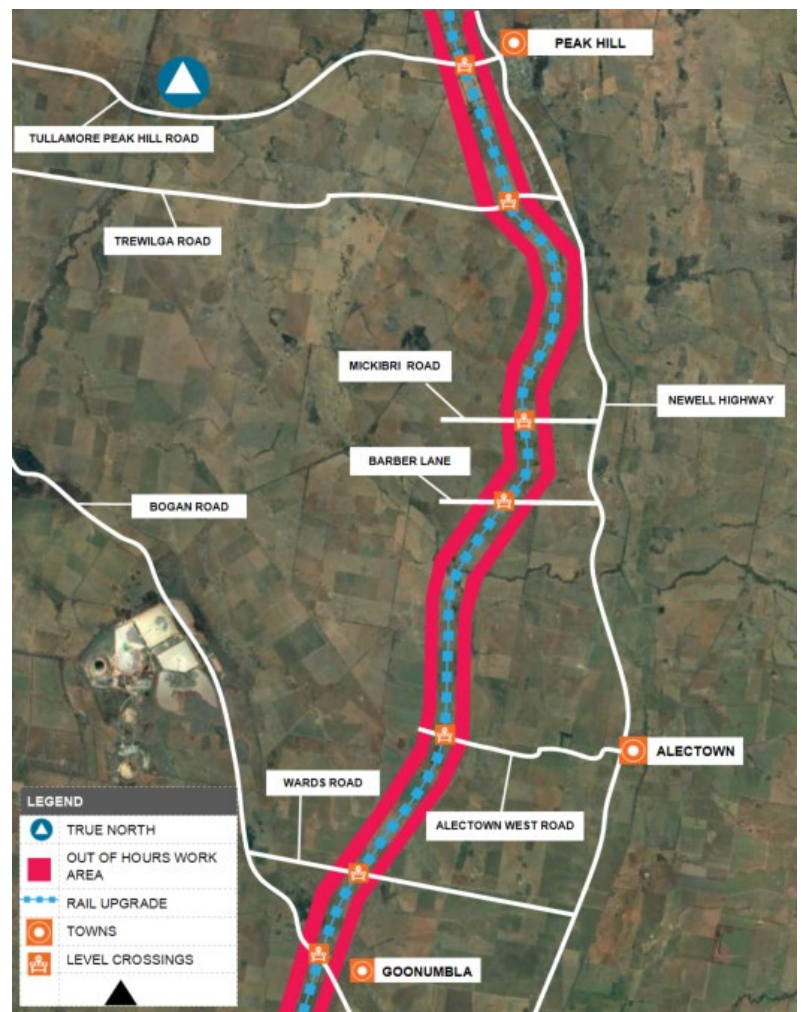
- Removing rail clips, rail and loading onto trains for removal
- Stacking old sleepers into piles
- Levelling ballast (large gravel) around level crossings

We will use noise minimising techniques, including but not limited to:

- Non-tonal alarms (quackers) on all vehicles and equipment
- Equipment not in use for extended periods shall be switched off

We appreciate your understanding as we build this once-in-a-generation project. We can be contacted **24 hours a day, seven days a week on 1800 732 761.**

Work area



FOR MORE INFORMATION

Contact us via **1800 732 761**, or email inlandrailnsw@artc.com.au
Find out more on our website, inlandrail.com.au

Document number: 5-0012-240-PCS-00-FS-0017