

PARKES TO NARROMINE INLAND RAIL

NOTIFICATION

Start of construction on Inland Rail

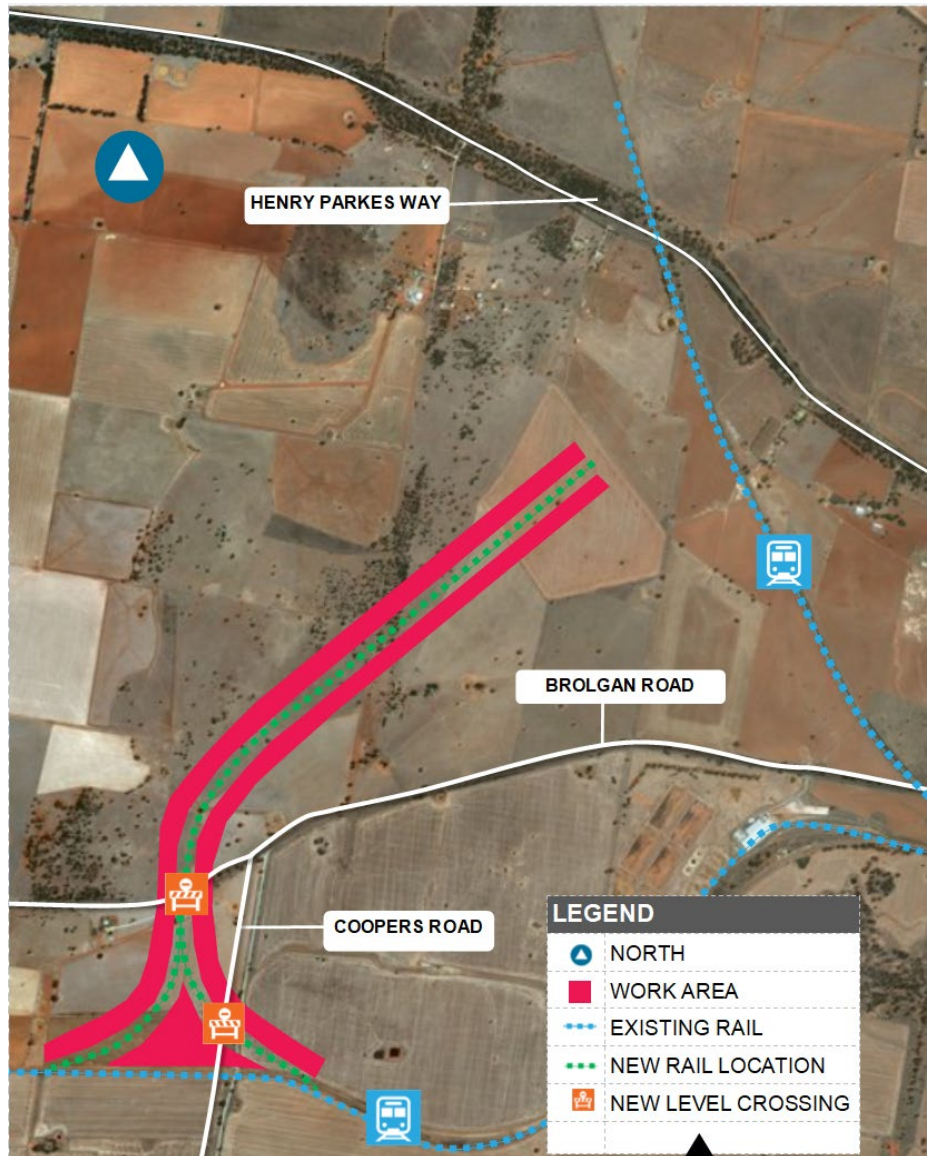
Inland Rail is a once-in-a-generation project connecting regional Australia to domestic and international markets. It will complete the spine of the national freight network between Melbourne and Brisbane.

Australian Rail Track Corporation (ARTC) has engaged INLink (a joint venture between BMD Constructions and Fulton Hogan) to upgrade and build the first section of the Inland Rail, from Parkes to Narromine.

The North–West Connection

The first part of work is to construct 5.3km of new rail track from the existing Broken Hill Line to join the existing rail track south of Henry Parkes Way. This new track is called the North–West Connection.

We will start construction on the North–West Connection from **Wednesday 13 February 2019** and expect to finish this work by late-2019.



This is an artist's impression only and is not to scale

FOR MORE INFORMATION

Contact us via **1800 732 761**, or email inlandrailnsw@artc.com.au
 Find out more on our website, inlandrail.com.au

PARKES TO NARROMINE INLAND RAIL

NOTIFICATION

What we will be doing

Construction work

- Building new train line which involves rail earthworks, including excavating and building rail formation and tracks between the Broken Hill line and Henry Parkes Way
- Installing concrete culverts
- Building new level crossing on Coopers Road – this includes new signals, road surfacing and line marking
- There will be a range of heavy vehicles and machinery operating including large trucks and excavators

Vegetation removal and fencing

- Removing trees and shrubs in the road and railway corridor
- Installing temporary and permanent fencing around our work

Temporary road detours and closures

- Road closures and detours are required as part of our work. Please see over the page for more details

Environmental management

- Fauna spotters will be scoping the site to identify native animals that may be impacted by works
- Environmental monitoring including noise, air quality and vibration

Geotechnical and service investigation

- Drill holes to collect soil samples
- Dig holes with a vacuum truck to find underground services
- Survey the area to determine official boundaries of properties

Work hours

Our standard working hours are between:

7:00 am to 6:00 pm Monday to Friday

8:00 am to 1:00 pm Saturday.

If work is required outside these standards working hours, impacted residents will be notified in advance.

There may be an increase in noise and traffic movements in the area during our works. Every effort will be made to minimise impacts to the surrounding community.

We appreciate your understanding as we build this once-in-a-generation project.

FOR MORE INFORMATION

Contact us via **1800 732 761**, or email inlandrailnsw@artc.com.au

Find out more on our website, inlandrail.com.au

PARKES TO NARROMINE INLAND RAIL

NOTIFICATION

Temporary road and lane closures

Coopers Road

Coopers Road, between Brolgan Road and London Road, Parkes, will have traffic control from Wednesday 13 February 2019. From early to mid-March 2019 for approximately three months, Coopers Road will be closed while we build a new level crossing. Please see map below for detour.

Brolgan Road

Brolgan Road, Parkes, will remain open. However, from Wednesday 13 February traffic control will be in place. We will also build a new level crossing on Brolgan Road, Parkes. We will notify impacted residents, landowners and road users again before we start to build this new level crossing.

Traffic management will be in place to direct road users around our work. We will access our work site via both Coopers Road and Brolgan Road. During the work there will be heavy vehicles travelling to and from our work site.

Detour Map

We appreciate your understanding during this once in a generation project.

We can be contacted 24 hours a day, 7 days a week on **1800 732 761**.



This is an artist's impression only and is not to scale

Document number: 5-0012-240-PCS-00-FS-0004

FOR MORE INFORMATION

Contact us via **1800 732 761**, or email inlandrailnsw@artc.com.au
Find out more on our website, inlandrail.com.au

The Australian Government is delivering Inland Rail through the Australian Rail Track Corporation (ARTC), in partnership with the private sector.