

Parkes to Narromine Inland Rail

NOTIFICATION

Preparing to build Inland Rail – low impact works

Inland Rail is a once-in-a-generation project connecting regional Australia to domestic and international markets. It will complete the spine of the national freight network between Melbourne and Brisbane via regional VIC, NSW, and QLD.

Australian Rail Track Corporation (ARTC) has engaged INLink (a joint venture between BMD Constructions and Fulton Hogan) to upgrade and build the first section of the Inland Rail, from Parkes to Narromine.

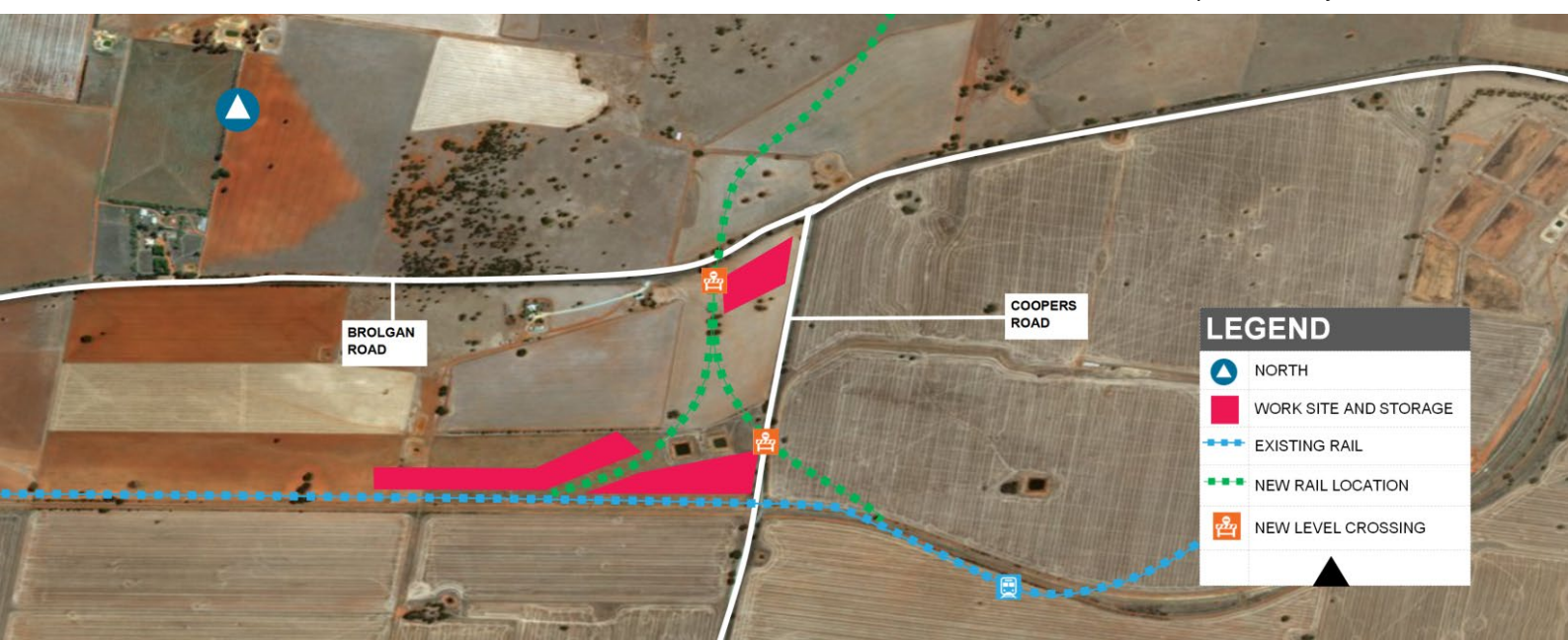
Start of work

From Thursday 15 November 2018 we will start low impact works near Coopers Road and Brolgan Road, Parkes. This work is in preparation for the start of construction on Inland Rail. We expect to finish this work by late December 2018. Please see the map below and over the page for more information.

In the coming months we will start construction on this section of Inland Rail. We will let you know again before we start this work. We expect to finish all work on Inland Rail in this area by mid-2019.

MAP OF WORK

This is an artist's impression only and is not to scale



FOR MORE INFORMATION

Contact us via **1800 732 761**, or email inlandrailnsw@artc.com.au
Find out more on our website, inlandrail.com.au/p2n

Parkes to Narromine Inland Rail

NOTIFICATION

What we will be doing

Constructing a site facility

- Clear the area including earth works and removing vegetation.
- Create new access roads and hardstand areas for use as car parks and for equipment storage.
- Install demountable buildings, storage areas and temporary fencing.
- Deliver machinery and other construction equipment.

Environmental monitoring

- Conduct environmental monitoring including noise, air quality, vibration.
- Installation of environmental monitoring equipment.

Geotechnical investigation

- Drill holes to collect soil samples.

Service utilities location and survey

- Dig holes with a vacuum truck to find underground utilities and services.
- Survey the area to determine official boundaries of properties.

Vegetation removal and fencing

- Remove trees and shrubs in the road and railway corridor.
- Install temporary fencing around the low impact works.

Work hours

We will work from 7:00 am to 6:00 pm Monday to Friday and 8:00 am to 1:00 pm Saturday. If we need to work outside these hours, we will let impacted residents know before we do this work.

There may be an increase in noise and traffic movements in the area during our works.

We appreciate your understanding as we build this once-in-a-generation project.

Document number: 5-0012-240-PCS-00-FS-0001

FOR MORE INFORMATION

Contact us via **1800 732 761**, or email inlandrailnsw@artc.com.au
Find out more on our website, inlandrail.com.au/p2n

The Australian Government is delivering Inland Rail through the Australian Rail Track Corporation (ARTC), in partnership with the private sector.