

# PARKES TO NARROMINE INLAND RAIL

## NOTIFICATION

### Preparing to build Inland Rail – low impact works

Inland Rail is a once-in-a-generation project connecting regional Australia to domestic and international markets. It will complete the spine of the national freight network between Melbourne and Brisbane via regional VIC, NSW, and QLD.

Australian Rail Track Corporation (ARTC) has engaged INLink (a joint venture between BMD Constructions and Fulton Hogan) to upgrade and build the first section of the Inland Rail, from Parkes to Narromine.

#### Start of work

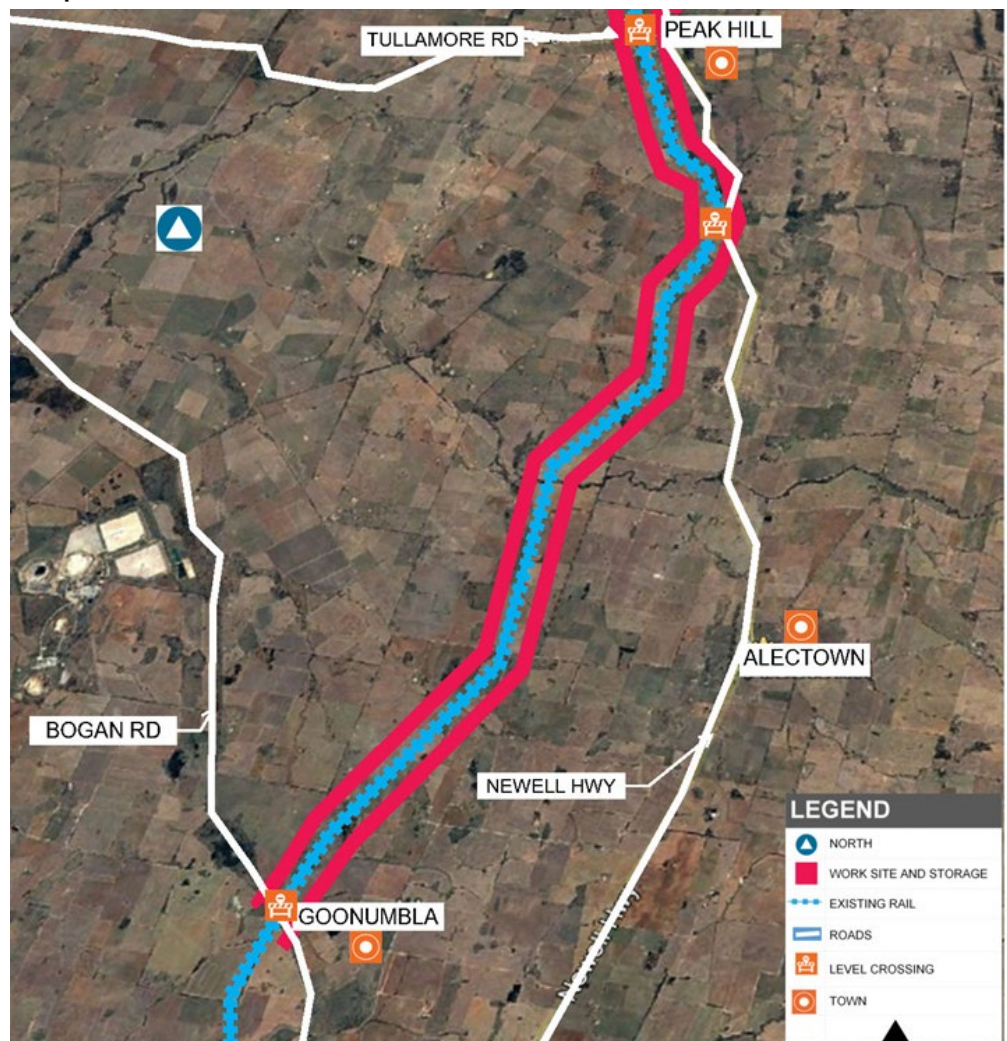
From Monday 7 January 2019, we will be starting low impact works along the railway line between Bogan Road, Goonumbla and Tullamore Road, Peak Hill.

This work is in preparation for the start of construction on Inland Rail.

Following the low impact works, construction will start on Inland Rail. We will let you know again before we start this work. We expect to finish all work on the Inland Rail between Parkes and Narromine by mid-2020.

More information about what we will be doing is over the page.

Map of work area



#### FOR MORE INFORMATION

Contact us via **1800 732 761**, or email [inlandrailnsw@artc.com.au](mailto:inlandrailnsw@artc.com.au)  
Find out more on our website, [inlandrail.com.au/p2n](http://inlandrail.com.au/p2n)

# PARKES TO NARROMINE INLAND RAIL

## NOTIFICATION

### What we will be doing

#### Environmental monitoring

- Conduct environmental monitoring including noise, air quality, vibration.
- Install environmental monitoring equipment and complete environmental surveys.

#### Geotechnical investigation

- Drill holes to collect soil samples.

#### Service utilities location, relocation and survey

- Dig holes with a vacuum truck to find underground utilities and services.
- Survey the area to determine official boundaries of properties.
- Relocate services such as watermains, telephone cables and optic fibre cables

#### Vegetation removal and fencing

- Remove trees and shrubs in the road and railway corridor.
- Install temporary and permanent fencing around the low impact works where required.

#### Constructing storage compounds

- Clear the area including earth works and removing vegetation.
- Create new access roads and hardstand areas for use as car parks and for equipment storage.
- Deliver machinery, construction equipment, rail lengths, concrete sleepers and culverts.

#### Community safety

- All work areas will be protected or fenced to ensure safety to the public.
- Our sites will be clearly signed to identify work zones, and the community will be notified where required.

### Work hours

We will work from 7:00 am to 6:00 pm Monday to Friday and 8:00 am to 1:00 pm Saturday. If we need to work outside these hours, we will let impacted residents know before we do this work.

There may be an increase in noise and traffic movements in the area during our works.

We appreciate your understanding as we build this once-in-a-generation project.

Document number: 5-0012-240-PCS-00-FS-0011

### FOR MORE INFORMATION

Contact us via **1800 732 761**, or email [inlandrailnsw@artc.com.au](mailto:inlandrailnsw@artc.com.au)  
Find out more on our website, [inlandrail.com.au/p2n](http://inlandrail.com.au/p2n)