

Parkes to Narromine Inland Rail

NOTIFICATION

Preparing to build Inland Rail – service relocation

Inland Rail is a once-in-a-generation project connecting regional Australia to domestic and international markets. It will complete the spine of the national freight network between Melbourne and Brisbane via regional VIC, NSW, and QLD.

Australian Rail Track Corporation (ARTC) has engaged INLink (a joint venture between BMD Constructions and Fulton Hogan) to upgrade and build the first section of the Inland Rail, from Parkes to Narromine.

Service relocation

From Tuesday 15 January 2019 we will start work to relocate Telstra services near the Back Trundle Road level crossing, Parkes. This work is in preparation for the start of construction on Inland Rail. We expect to finish this work by early February 2019.

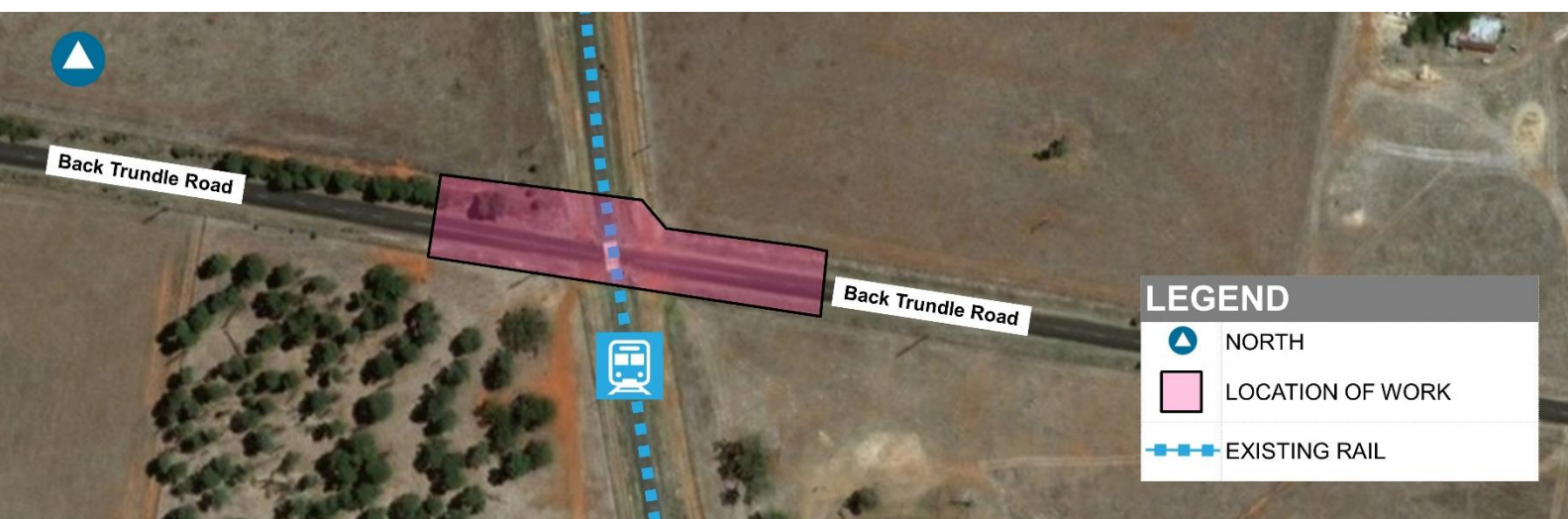
There will be an increase in noise and traffic movements in the area during the work. We will be using trucks, excavators and horizontal directional drilling equipment. Back Trundle Road will remain open during the work.

Work hours

We will work from 7:00 am to 6:00 pm Monday to Friday and 8:00 am to 1:00 pm Saturday.

We appreciate your understanding as we build this once-in-a-generation project. For more information, please contact us on the details below.

MAP OF WORK



FOR MORE INFORMATION

Contact us via **1800 732 761**, or email inlandrailnsw@artc.com.au
Find out more on our website, inlandrail.com.au/p2n