

NORTH STAR TO BORDER (NS2B) PROJECT



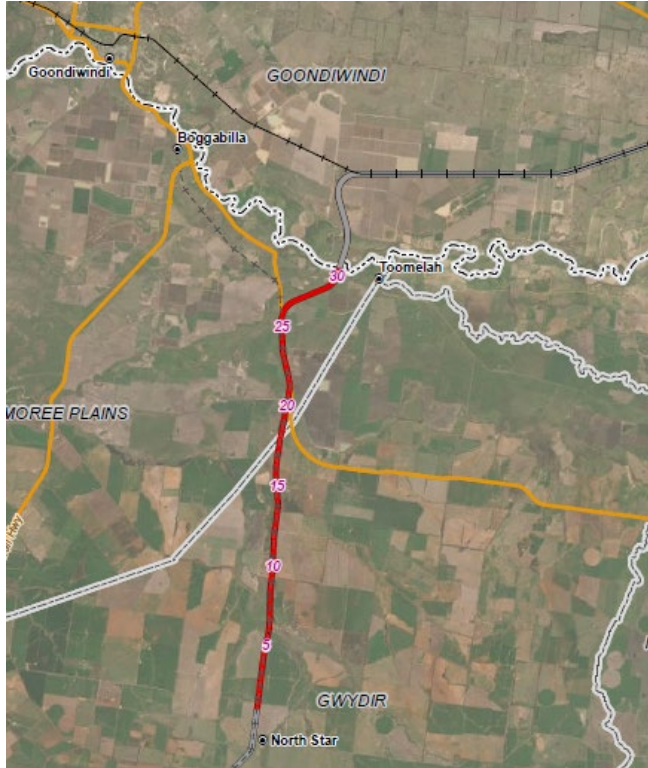
COMMUNITY CONSULTATIVE COMMITTEE MEETING

11 August 2020

AGENDA

1. PROJECT OVERVIEW
2. ENVIRONMENTAL IMPACT STATEMENT (EIS) STATUS
3. COMMUNITY CONSULTATION
4. FLY-THROUGH
5. HOW TO MAKE A SUBMISSION
6. NEXT STEPS
7. KEY CONTACTS

PROJECT OVERVIEW



Macintyre River flood model

- ← BMT's independent review found the extended and updated model to be 'Fit for Purpose'
- ← Addressed all stakeholder questions received in March '20
- ← WRM conducting a further review of the model on behalf of Goondiwindi Regional Council (GRC) and Inland Rail Working Group – NS2B

NS2B Alignment

- ← The reference design remains Alignment D1 for inclusion in the EIS

DRAFT EIS STATUS

Draft EIS submission for Public Exhibition

- Submitted draft EIS (option D1) for adequacy to Department of Planning Industry Environment (DPIE) – 12 May 2020
- Adequacy comments received – 11 June 2020
- Technical updates and response to comments – 30 July 2020
- Public Exhibition – late August / early September

Planned consultation in advance of Public Exhibition

- Directly affected landowners informed
- Local flood specialists informed
- Government agencies informed – DIRDTC and TfNSW
- Elected representatives informed



COMMUNITY CONSULTATION

Work completed

- Addition local flood specialist engagement
- First meeting with GRC and WRM to handover flood model and reports for additional independent review
- NS2B Flythrough released
- New stakeholder engagement advisor based in Goondiwindi – Welcome Lauren
- Geotechnical sampling and investigations
- Additional ground survey work

Work planned

- Support GRC with additional Macintyre River model review
- Consultation on response from stakeholders to 52 questions
- Further geotechnical sampling and investigations
- Ongoing landowner meetings



NS2B FLY-THROUGH



HOW TO MAKE A SUBMISSION

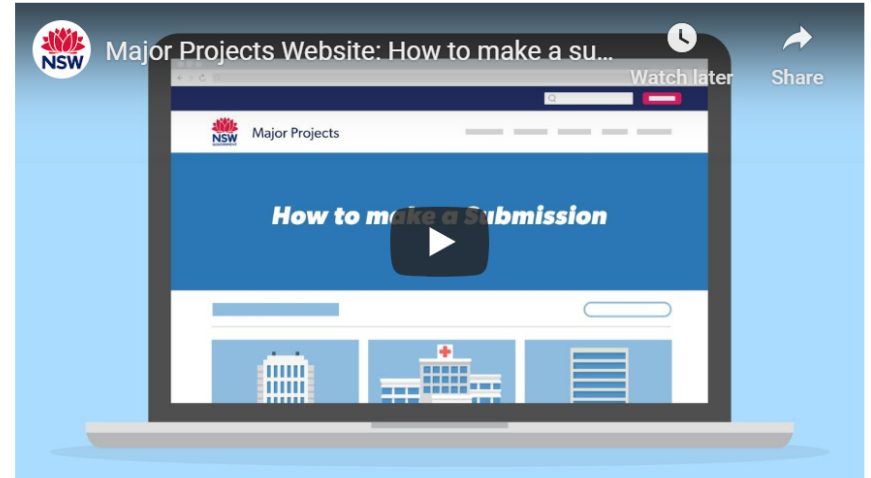
www.planningportal.nsw.gov.au/major-projects/have-your-say

Have Your Say Online!

You can make a submission online by signing up and creating an account. This will allow you to save submissions in progress, view a history of all the submissions you have made, and stay up-to-date with the progress of an application through automated email alerts.

Once you have signed up, find a project on exhibition and click 'Make Submission' or click 'Sign In' in the top right corner and then 'Make Submission'.

[Click Here to Sign Up](#)



Write to DPIE

Can't make a submission online? You can still send a physical copy of your submission to us by post or hand deliver it to one of the Department's offices. Your submission must include:

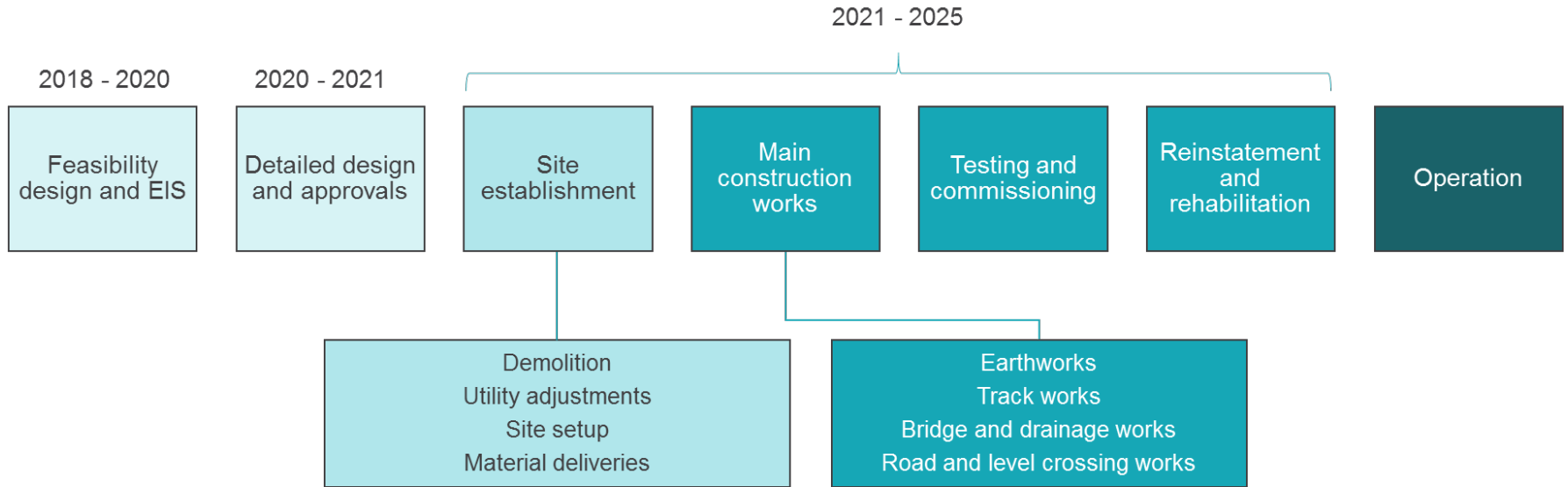
- Your name and address, at the top of the letter only;
- The name of the application and the application number;
- A statement on whether you support or object to the proposal;
- The reasons why you support or object to the proposal; and
- A declaration of any reportable political donations made in the previous two years.

Your submission must reach us before the close of the exhibition period and should be addressed to:

Planning and Assessment
Department of Planning, Industry and Environment
Locked Bag 5022
Parramatta NSW 2124

NEXT STEPS

Current Project Schedule



** Indicative timelines

NEXT STEPS

Community consultation

- Meeting to discuss the 52 questions – 12 Aug '20
- Continue to engage leading up to public exhibition period
 - E-newsletters
 - Meetings and briefings as required
- EIS public exhibition – late August / early September '20
- Goondiwindi Office – opened for business with Lauren
- Skills development programs – seeking approval from QLD State Government:
 1. Goondiwindi Show grounds – camp ground upgrade
 2. Land Conservation project – along the Macintyre River
 3. Fencing project with Toomelah LALC



CONTACTS

Naomi Tonscheck – Stakeholder Engagement Lead NS2B & Southern B2G

M 0438 736 054

E ntonscheck@artc.com.au