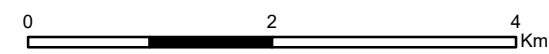


**NARROMINE TO NARRABRI**

**General Corridor and Construction Impact Zone**

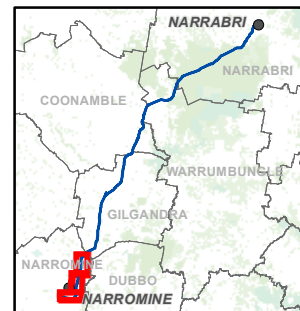
Sections 1 - 3 MAP 1



Coordinate System: GDA 1994 MGA Zone 55  
 ARTC makes no representation or warranty and assumes no duty of care or other responsibility to any party as to the completeness, accuracy or suitability of the information contained in this GIS map. The GIS map has been prepared from material provided to ARTC by an external source and ARTC has not taken any steps to verify the completeness, accuracy or suitability of that material.  
 ARTC will not be responsible for any loss or damage suffered as a result of any person whatsoever placing reliance upon the information contained within this GIS map.

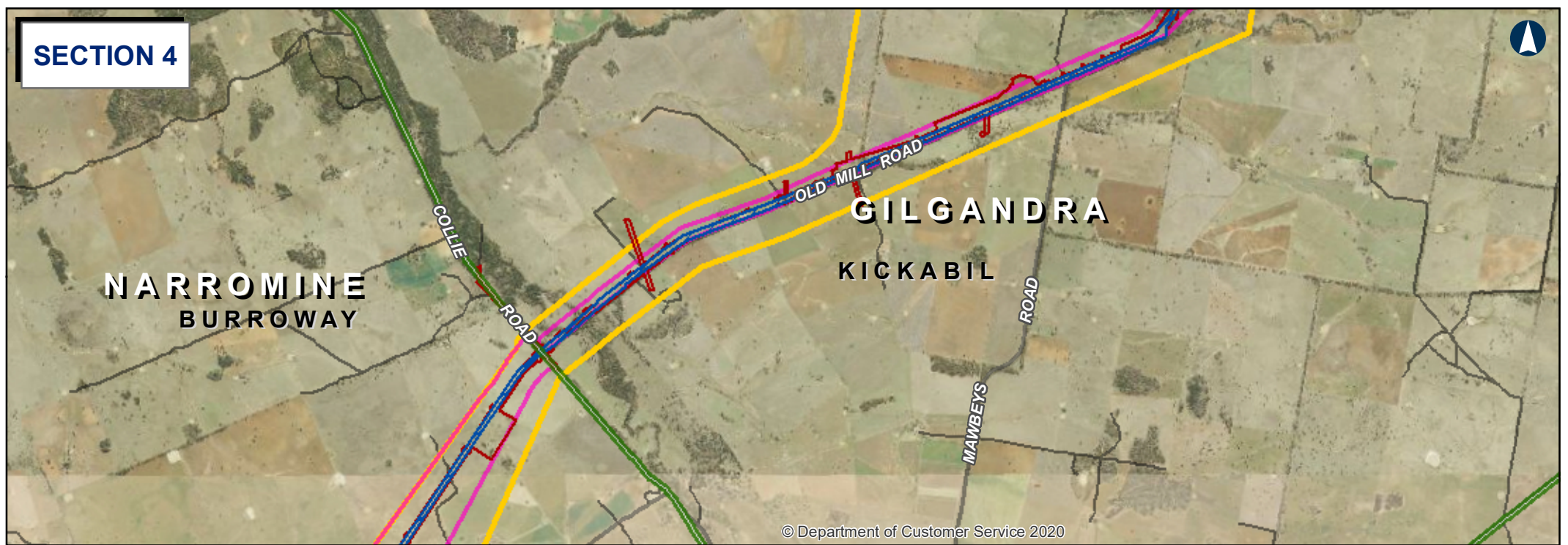
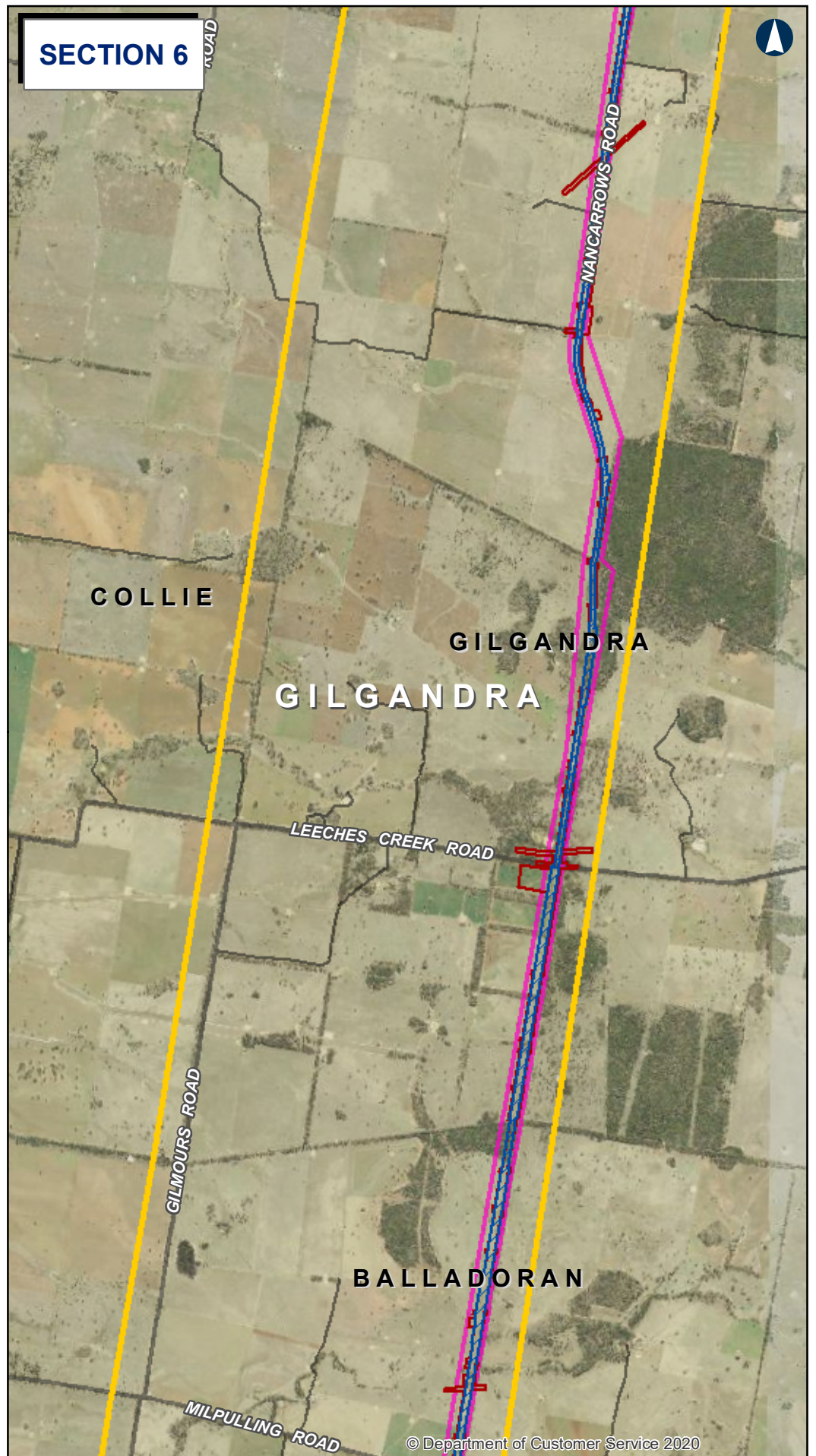
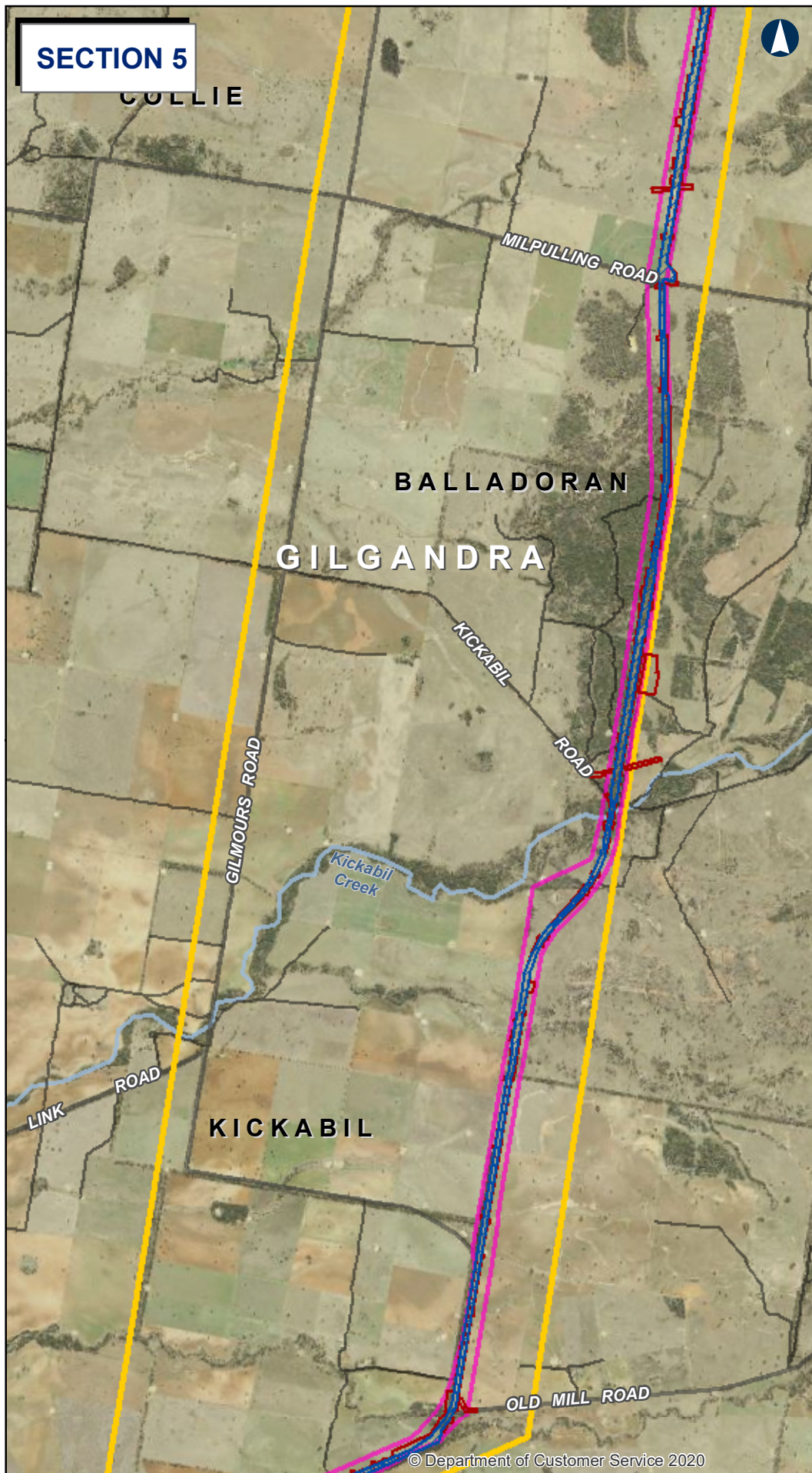
Date: 15/11/2020 Paper: A3  
 Author: IR.GIS Scale: 1:62,000  
 Data Sources:

- Rail corridor
- Construction impact zone
- Focused area
- Study area - Phase 1
- Local government area



The Australian Government is delivering Inland Rail through the Australian Rail Track Corporation (ARTC), in partnership with the private sector.

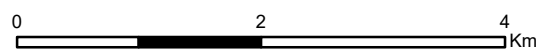




**NARROMINE TO NARRABRI**

**General Corridor and Construction Impact Zone**

**Sections 4 - 6 MAP 2**



Coordinate System: GDA 1994 MGA Zone 55

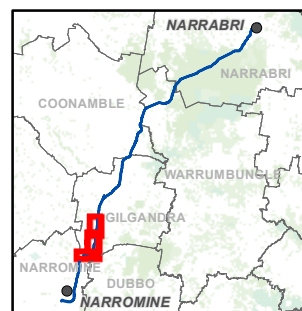
ARTC makes no representation or warranty and assumes no duty of care or other responsibility to any party as to the completeness, accuracy or suitability of the information contained in this GIS map. The GIS map has been prepared from material provided to ARTC by an external source and ARTC has not taken any steps to verify the completeness, accuracy or suitability of that material.

ARTC will not be responsible for any loss or damage suffered as a result of any person whatsoever placing reliance upon the information contained within this GIS map.

Date: 15/11/2020  
 Author: IR.GIS  
 Data Sources:

Paper: A3  
 Scale: 1:62,000

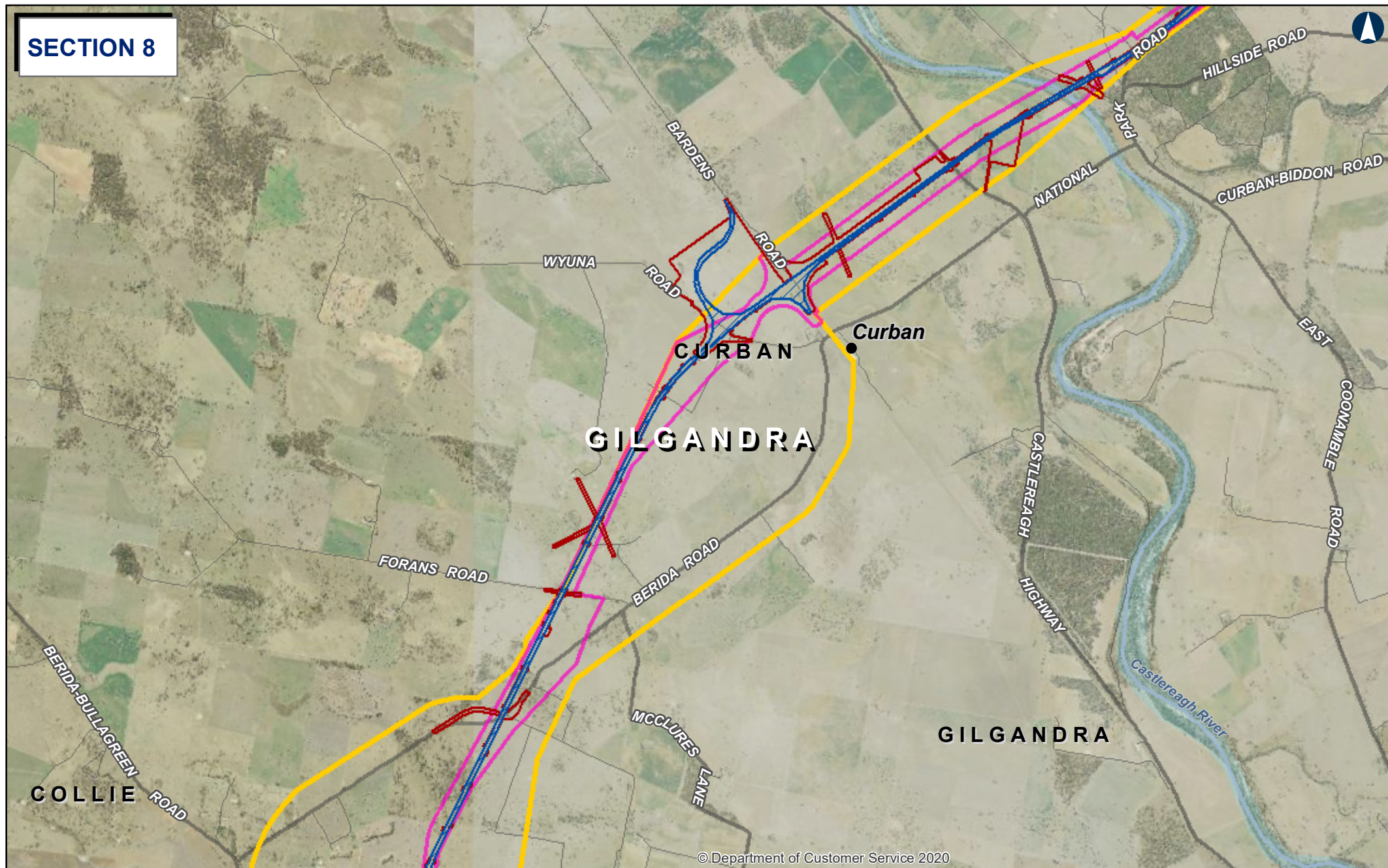
- Rail corridor
- Construction impact zone
- Focused area
- Study area - Phase 1
- Local government area



The Australian Government is delivering Inland Rail through the Australian Rail Track Corporation (ARTC), in partnership with the private sector.



**SECTION 8**



© Department of Customer Service 2020

**SECTION 7**

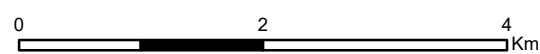


© Department of Customer Service 2020

**NARROMINE TO NARRABRI**

**General Corridor and Construction Impact Zone**

**Sections 7 & 8 MAP 3**

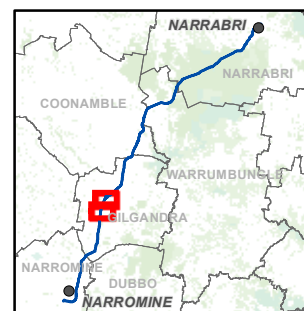


Coordinate System: GDA 1994 MGA Zone 55

ARTC makes no representation or warranty and assumes no duty of care or other responsibility to any party as to the completeness, accuracy or suitability of the information contained in this GIS map. The GIS map has been prepared from material provided to ARTC by an external source and ARTC has not taken any steps to verify the completeness, accuracy or suitability of that material. ARTC will not be responsible for any loss or damage suffered as a result of any person whatsoever placing reliance upon the information contained within this GIS map.

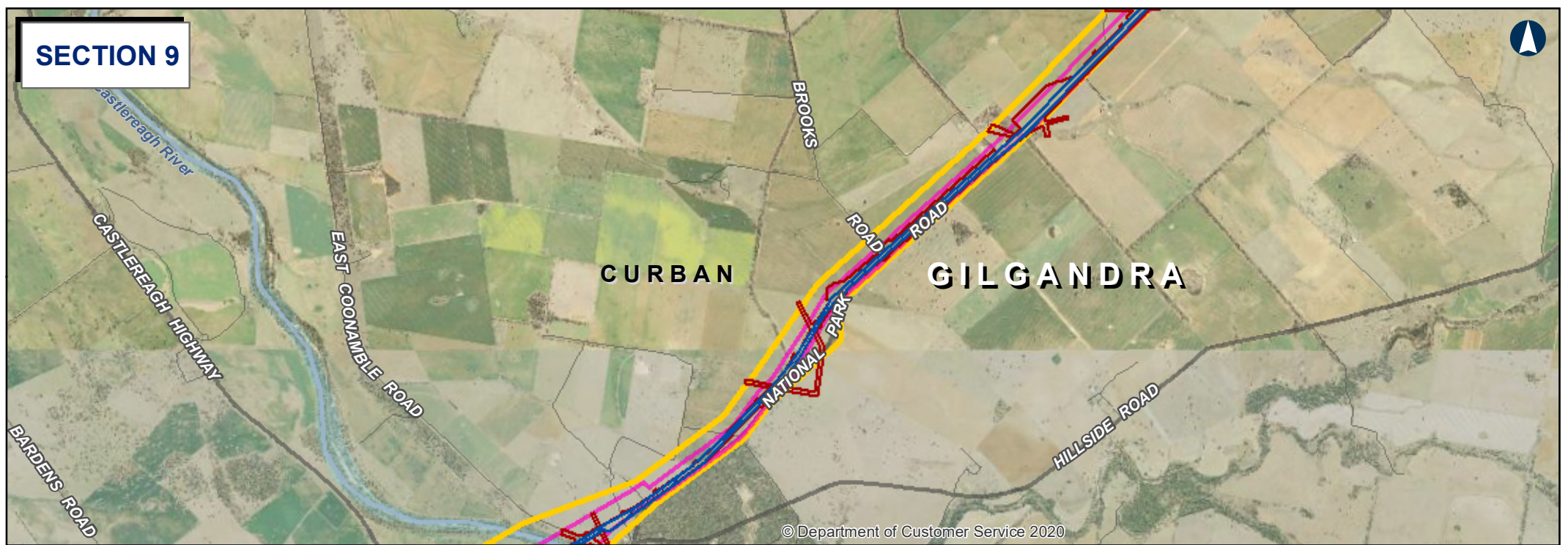
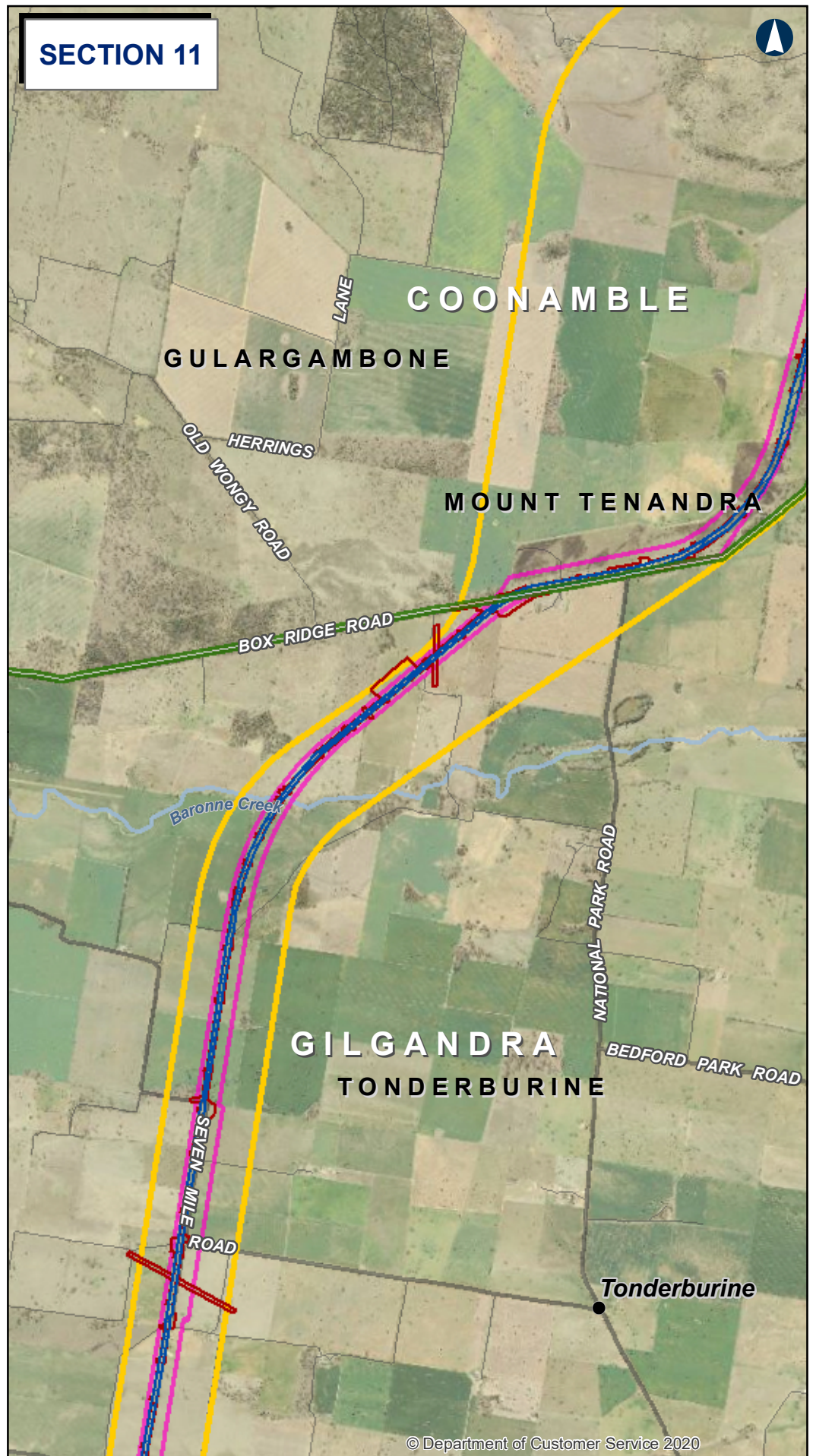
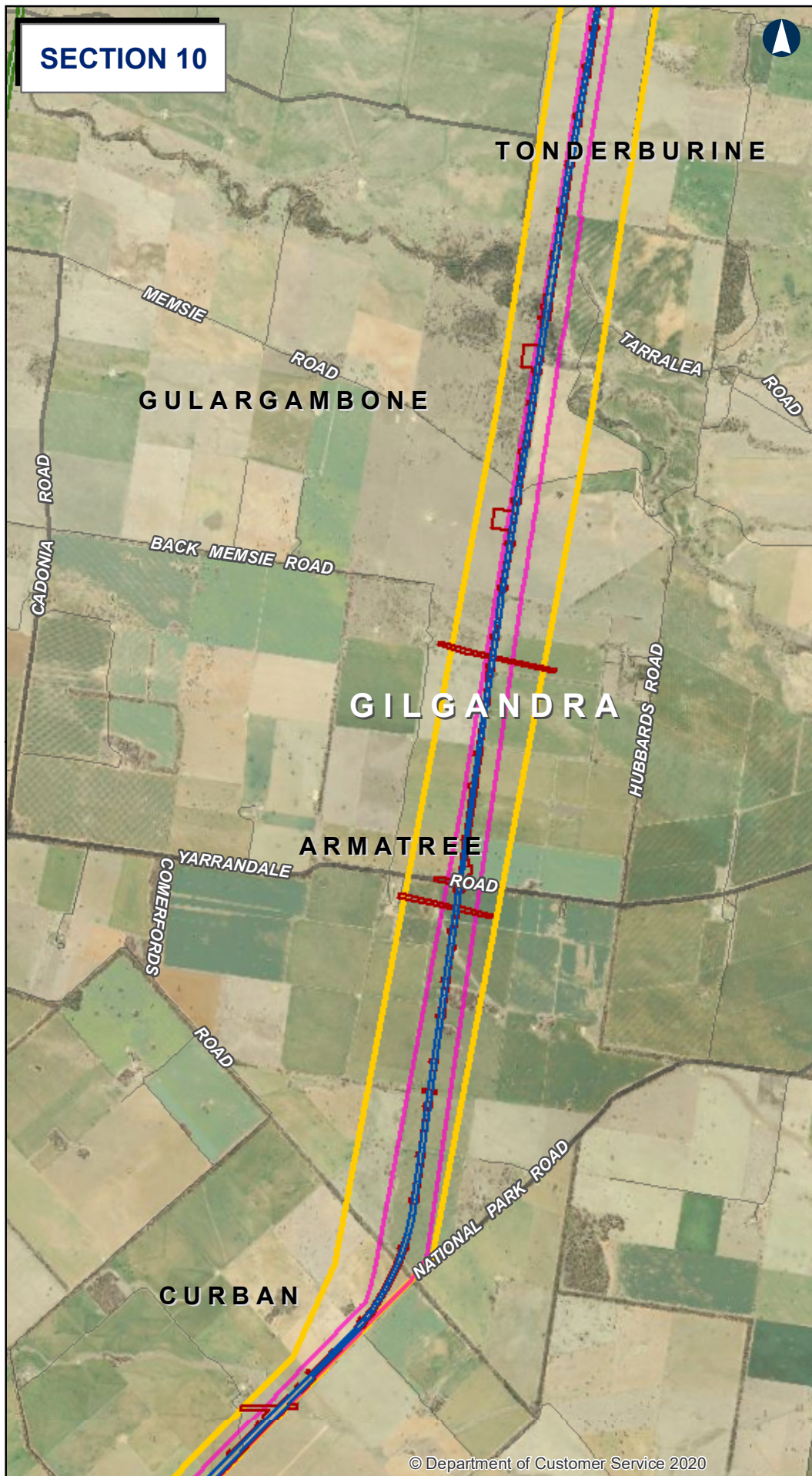
Date: 15/11/2020  
 Author: IR.GIS  
 Data Sources:  
 Paper: A3  
 Scale: 1:62,000

- Rail corridor
- Construction impact zone
- Focused area
- Study area - Phase 1
- Local government area



The Australian Government is delivering Inland Rail through the Australian Rail Track Corporation (ARTC), in partnership with the private sector.

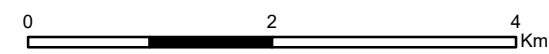




**NARROMINE TO NARRABRI**

**General Corridor and Construction Impact Zone**

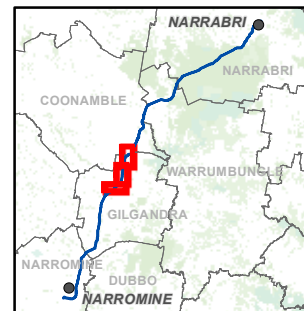
Sections 9 - 11 MAP 4



Coordinate System: GDA 1994 MGA Zone 55  
 ARTC makes no representation or warranty and assumes no duty of care or other responsibility to any party as to the completeness, accuracy or suitability of the information contained in this GIS map. The GIS map has been prepared from material provided to ARTC by an external source and ARTC has not taken any steps to verify the completeness, accuracy or suitability of that material.  
 ARTC will not be responsible for any loss or damage suffered as a result of any person whatsoever placing reliance upon the information contained within this GIS map.

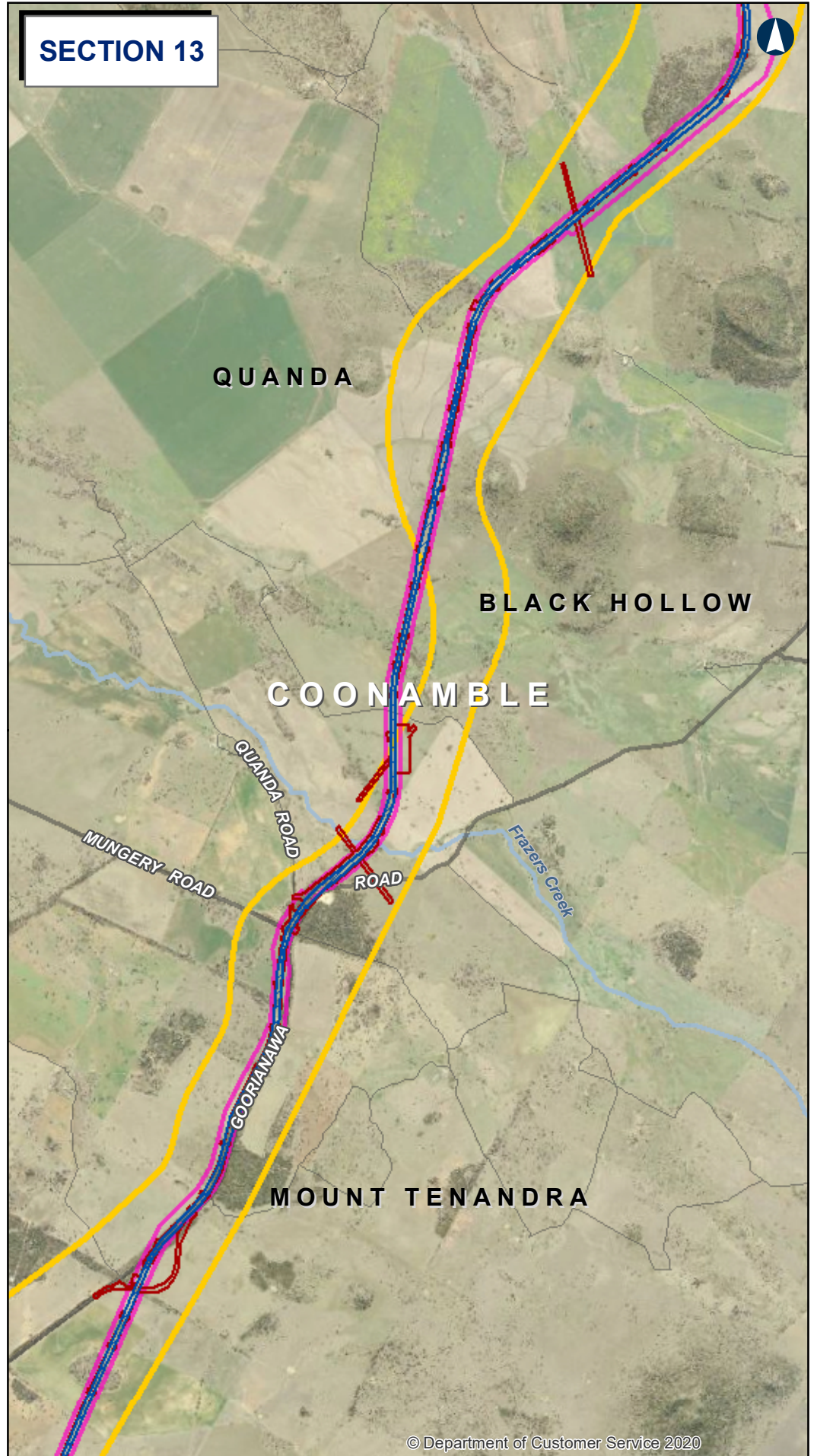
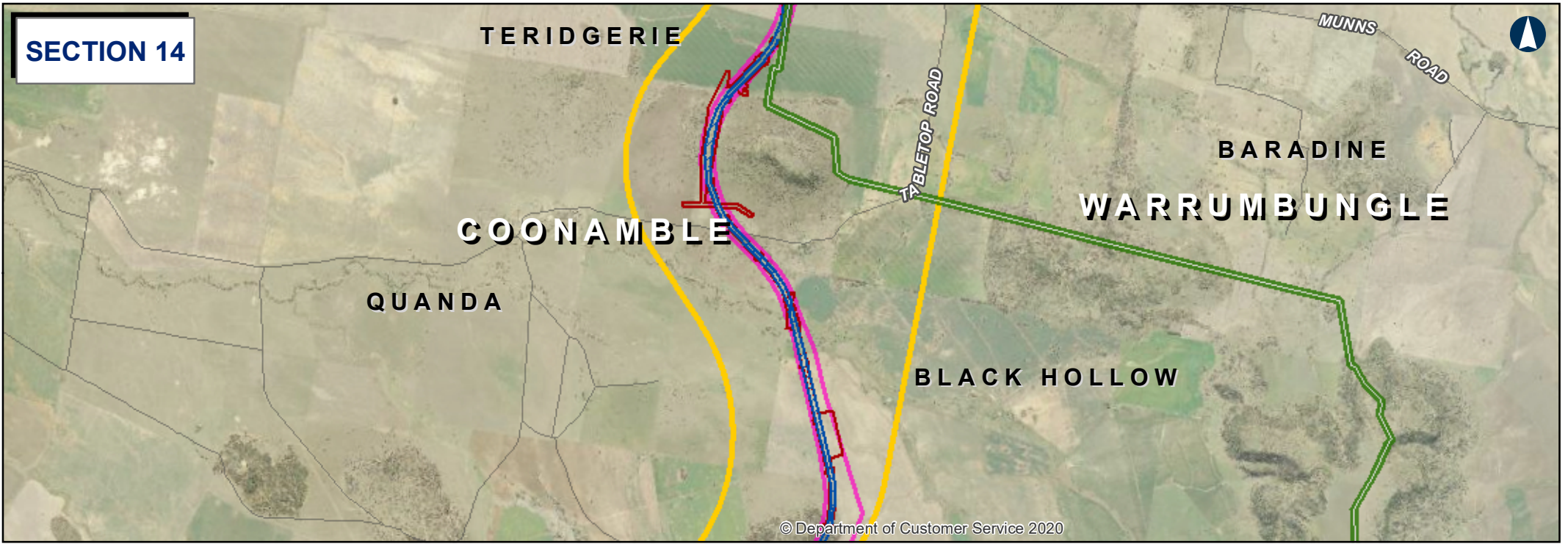
Date: 15/11/2020  
 Author: IR.GIS  
 Paper: A3  
 Scale: 1:62,000  
 Data Sources:

- Rail corridor
- Construction impact zone
- Focused area
- Study area - Phase 1
- Local government area



The Australian Government is delivering Inland Rail through the Australian Rail Track Corporation (ARTC), in partnership with the private sector.

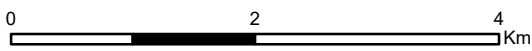




**NARROMINE TO NARRABRI**

**General Corridor and Construction Impact Zone**

Sections 12 - 14 **MAP 5**



Coordinate System: GDA 1994 MGA Zone 55  
 ARTC makes no representation or warranty and assumes no duty of care or other responsibility to any party as to the completeness, accuracy or suitability of the information contained in this GIS map. The GIS map has been prepared from material provided to ARTC by an external source and ARTC has not taken any steps to verify the completeness, accuracy or suitability of that material.  
 ARTC will not be responsible for any loss or damage suffered as a result of any person whatsoever placing reliance upon the information contained within this GIS map.

Date: 15/11/2020  
 Author: IR.GIS  
 Paper: A3  
 Scale: 1:62,000  
 Data Sources:

- Rail corridor
- Construction impact zone
- Focused area
- Study area - Phase 1
- Local government area



The Australian Government is delivering Inland Rail through the Australian Rail Track Corporation (ARTC), in partnership with the private sector.

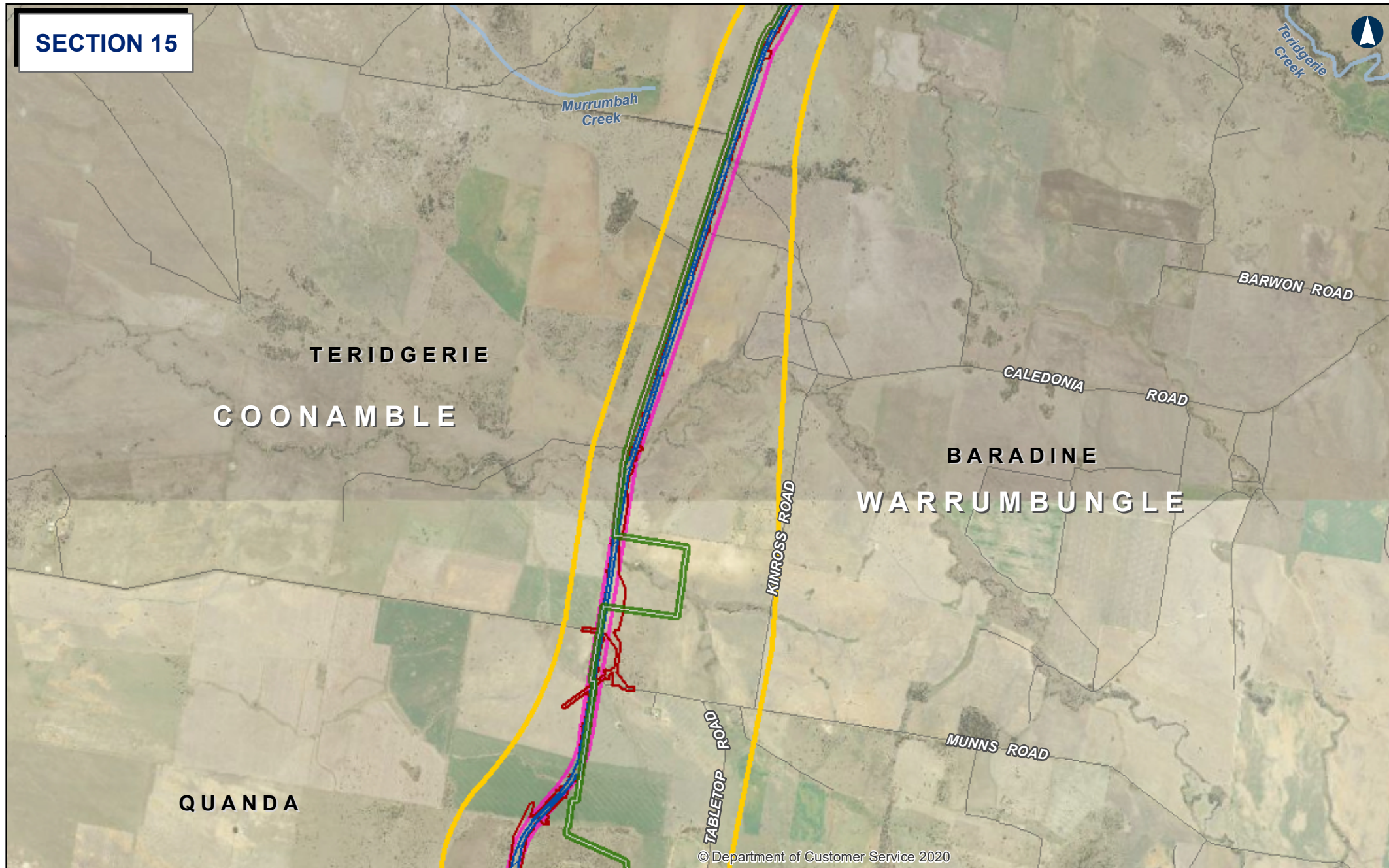


**SECTION 16**



© Department of Customer Service 2020

**SECTION 15**

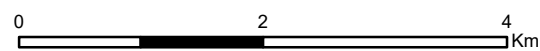


© Department of Customer Service 2020

**NARROMINE TO NARRABRI**

**General Corridor and Construction Impact Zone**

Sections 15 & 16 **MAP 6**



Coordinate System: GDA 1994 MGA Zone 55

ARTC makes no representation or warranty and assumes no duty of care or other responsibility to any party as to the completeness, accuracy or suitability of the information contained in this GIS map. The GIS map has been prepared from material provided to ARTC by an external source and ARTC has not taken any steps to verify the completeness, accuracy or suitability of that material. ARTC will not be responsible for any loss or damage suffered as a result of any person whatsoever placing reliance upon the information contained within this GIS map.

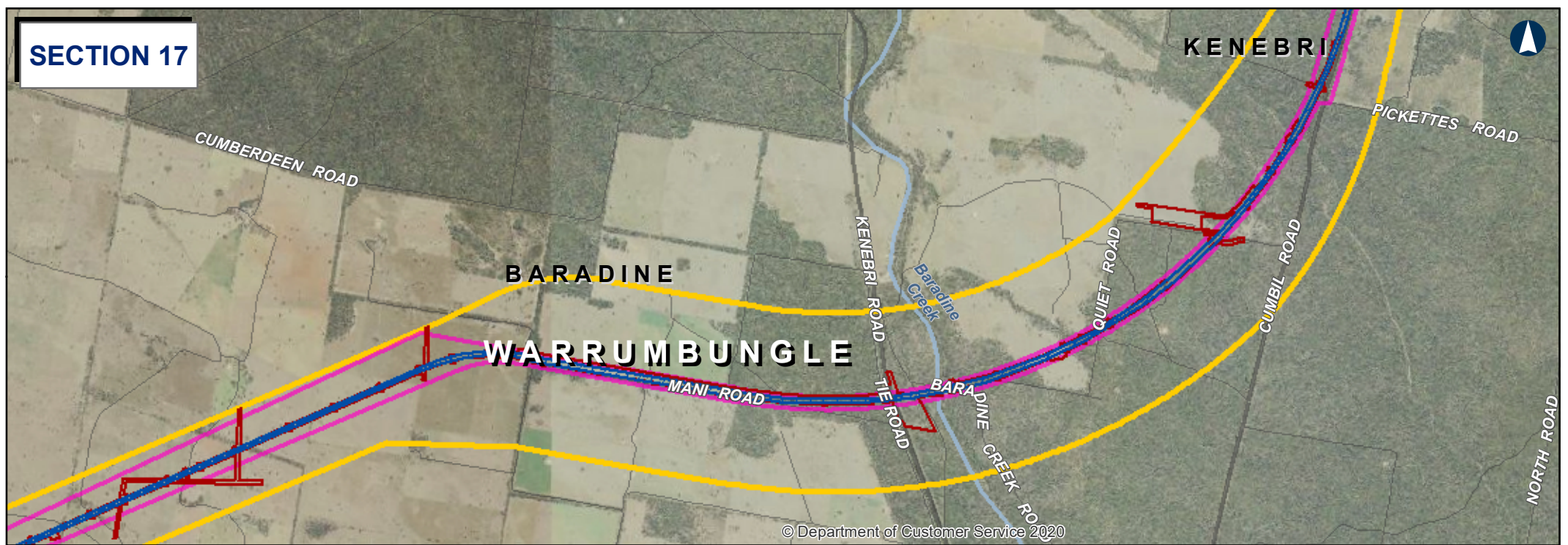
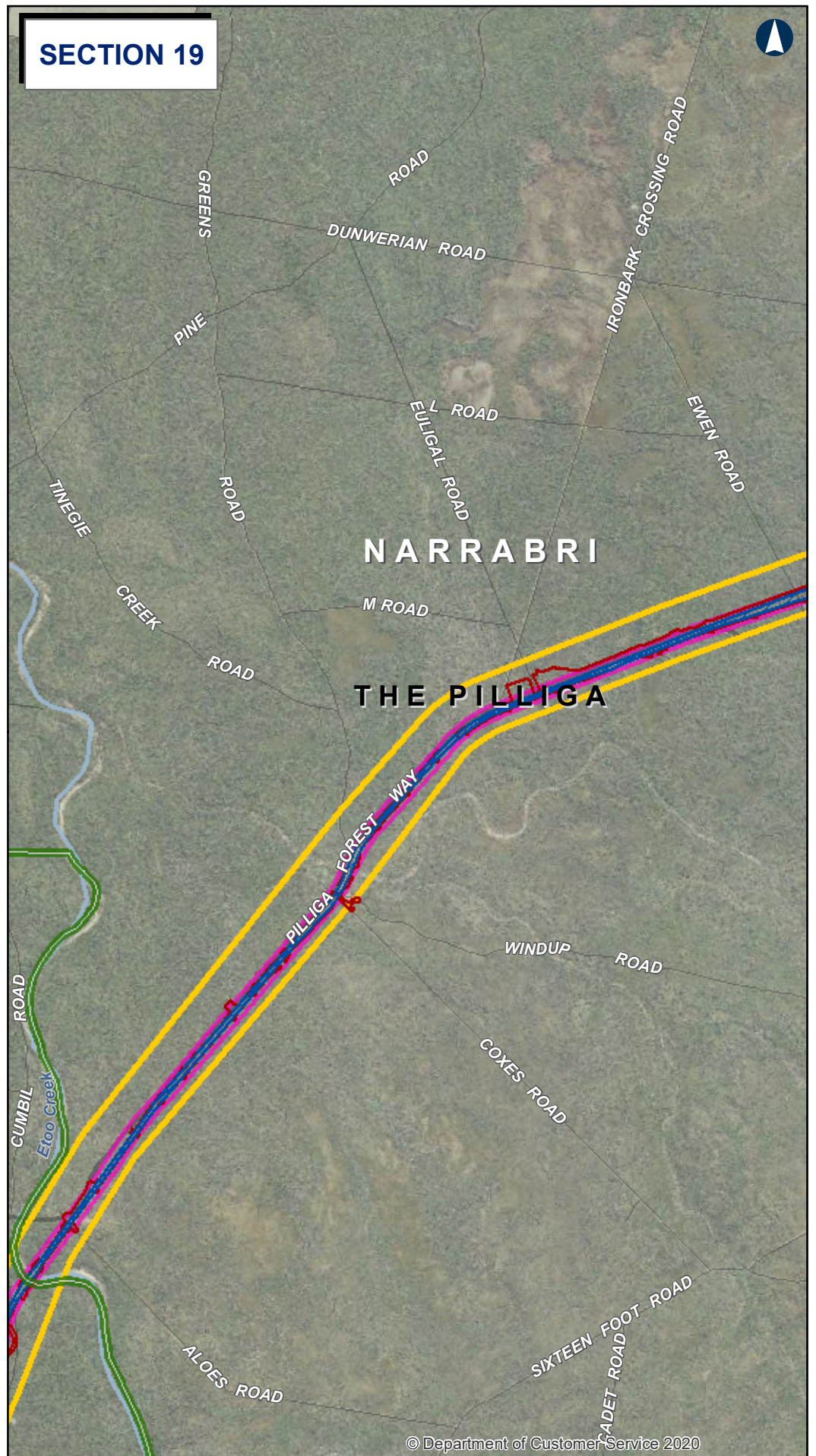
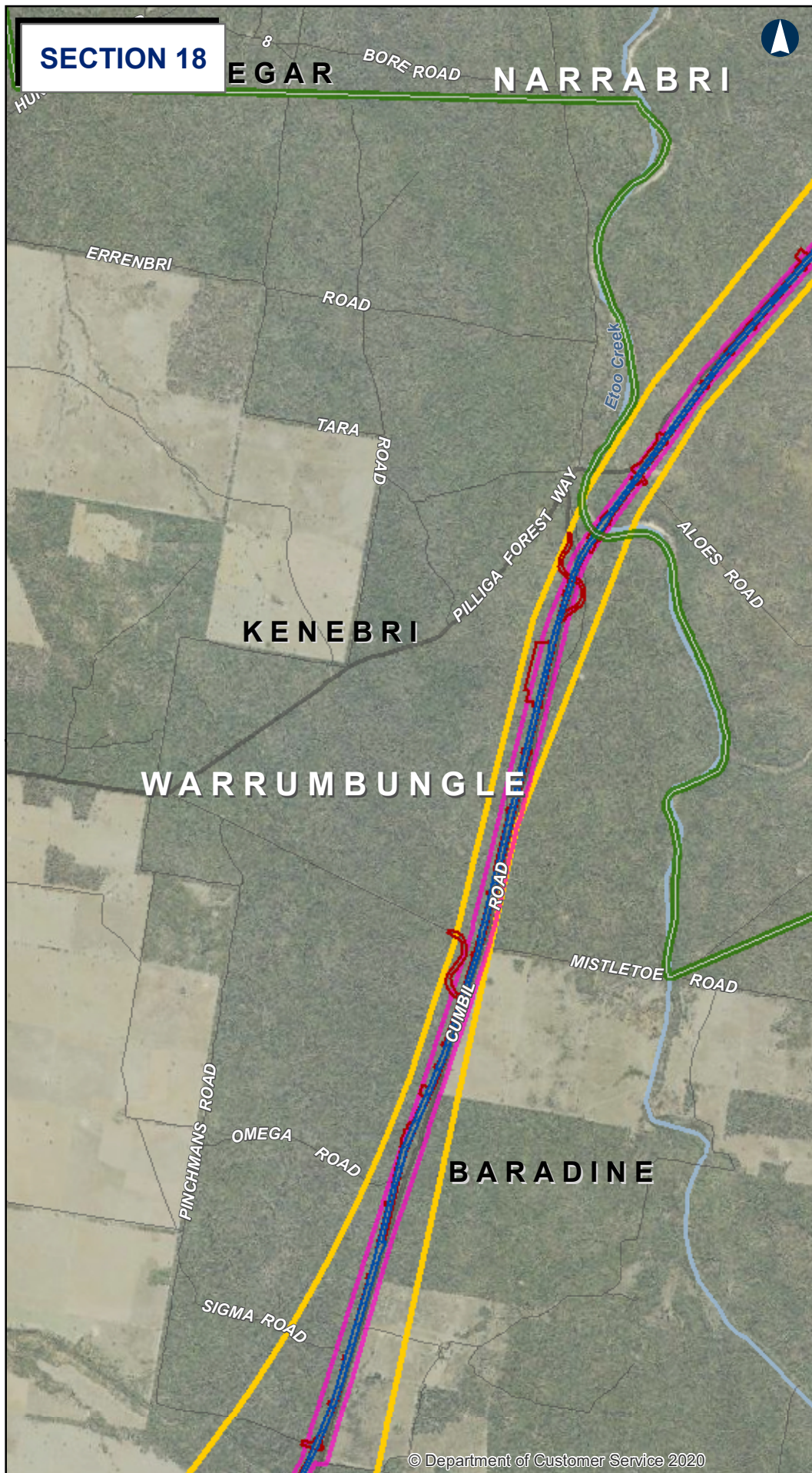
Date: 15/11/2020  
 Author: IR.GIS  
 Paper: A3  
 Scale: 1:62,000  
 Data Sources:

- Rail corridor
- Construction impact zone
- Focused area
- Study area - Phase 1
- Local government area



The Australian Government is delivering Inland Rail through the Australian Rail Track Corporation (ARTC), in partnership with the private sector.

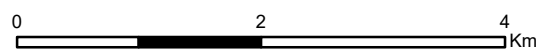




## NARROMINE TO NARRABRI

## General Corridor and Construction Impact Zone

Sections 17 - 19 MAP 7



Coordinate System: GDA 1994 MGA Zone 55

ARTC makes no representation or warranty and assumes no duty of care or other responsibility to any party as to the completeness, accuracy or suitability of the information contained in this GIS map. The GIS map has been prepared from material provided to ARTC by an external source and ARTC has not taken any steps to verify the completeness, accuracy or suitability of that material. ARTC will not be responsible for any loss or damage suffered as a result of any person whatsoever placing reliance upon the information contained within this GIS map.

Date: 15/11/2020  
 Author: IR.GIS  
 Data Sources:  
 Paper: A3  
 Scale: 1:62,000

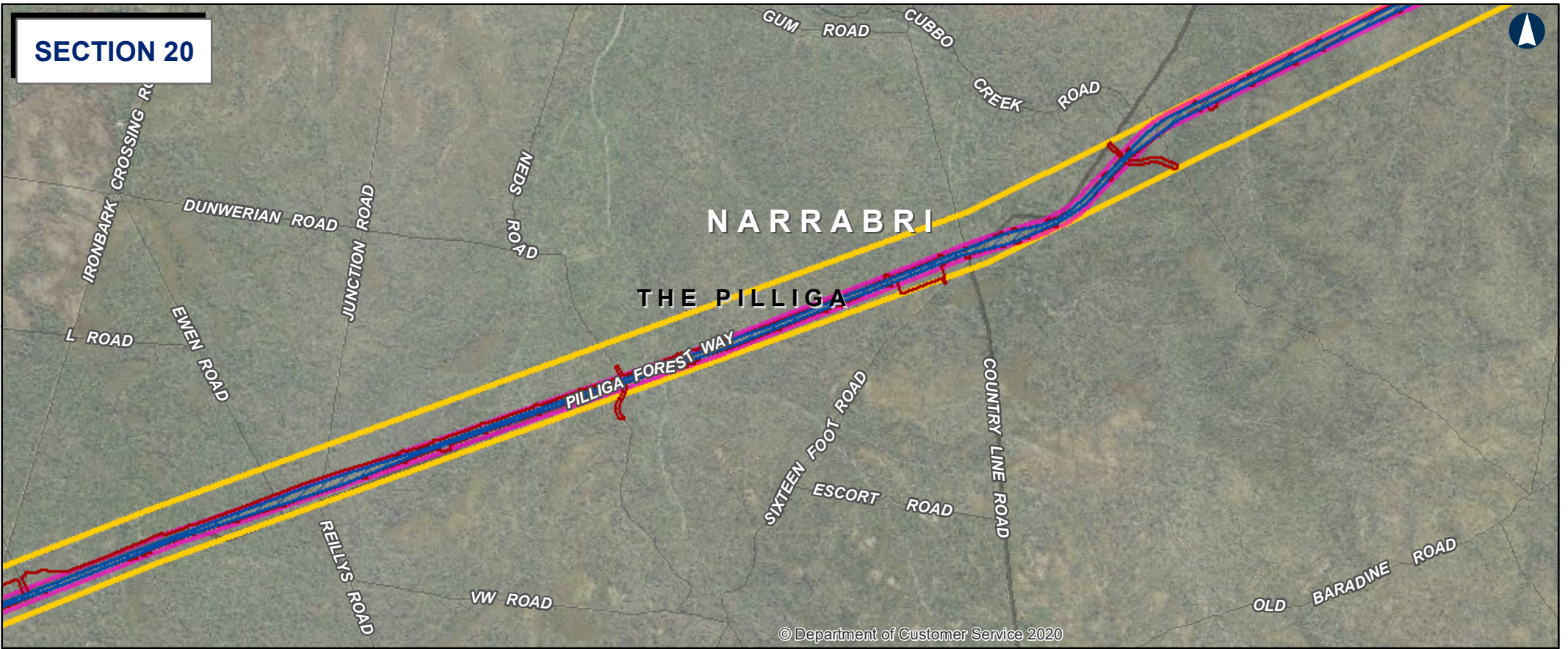
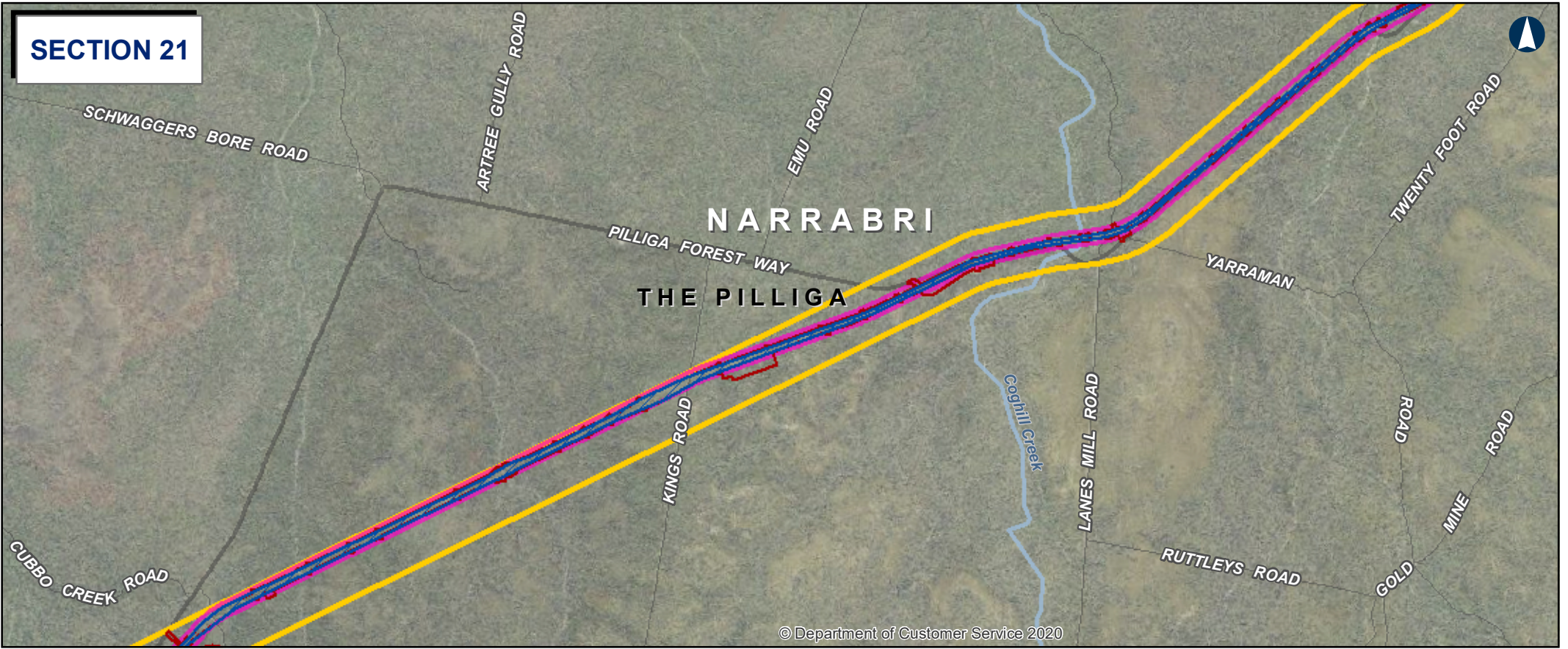
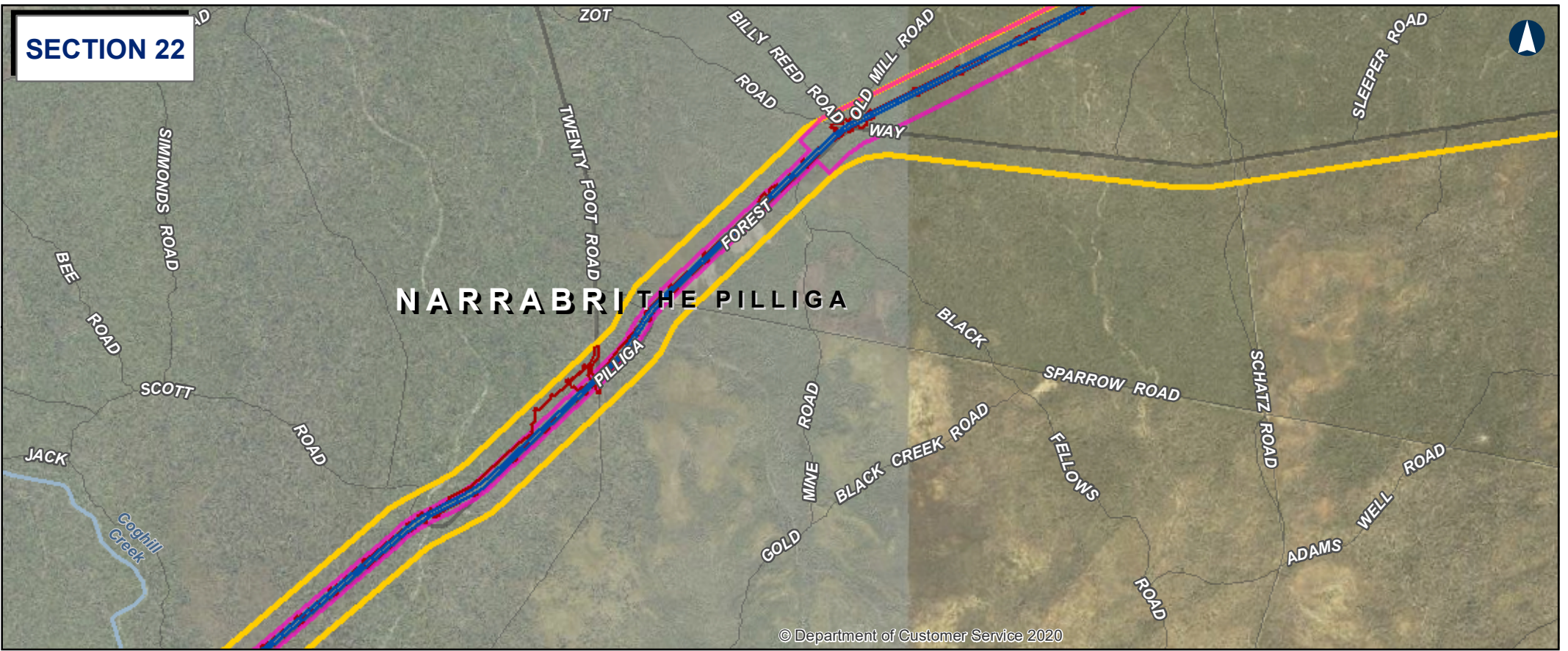
- Rail corridor
- Construction impact zone
- Focused area
- Study area - Phase 1
- Local government area



**INLAND RAIL** **ARTC**

The Australian Government is delivering Inland Rail through the Australian Rail Track Corporation (ARTC), in partnership with the private sector.





**NARROMINE TO NARRABRI**      **General Corridor and Construction Impact Zone**      **Sections 20 - 22**      **MAP 8**

0      2      4 Km

Coordinate System: GDA 1994 MGA Zone 55

ARTC makes no representation or warranty and assumes no duty of care or other responsibility to any party as to the completeness, accuracy or suitability of the information contained in this GIS map. The GIS map has been prepared from material provided to ARTC by an external source and ARTC has not taken any steps to verify the completeness, accuracy or suitability of that material. ARTC will not be responsible for any loss or damage suffered as a result of any person whatsoever placing reliance upon the information contained within this GIS map.

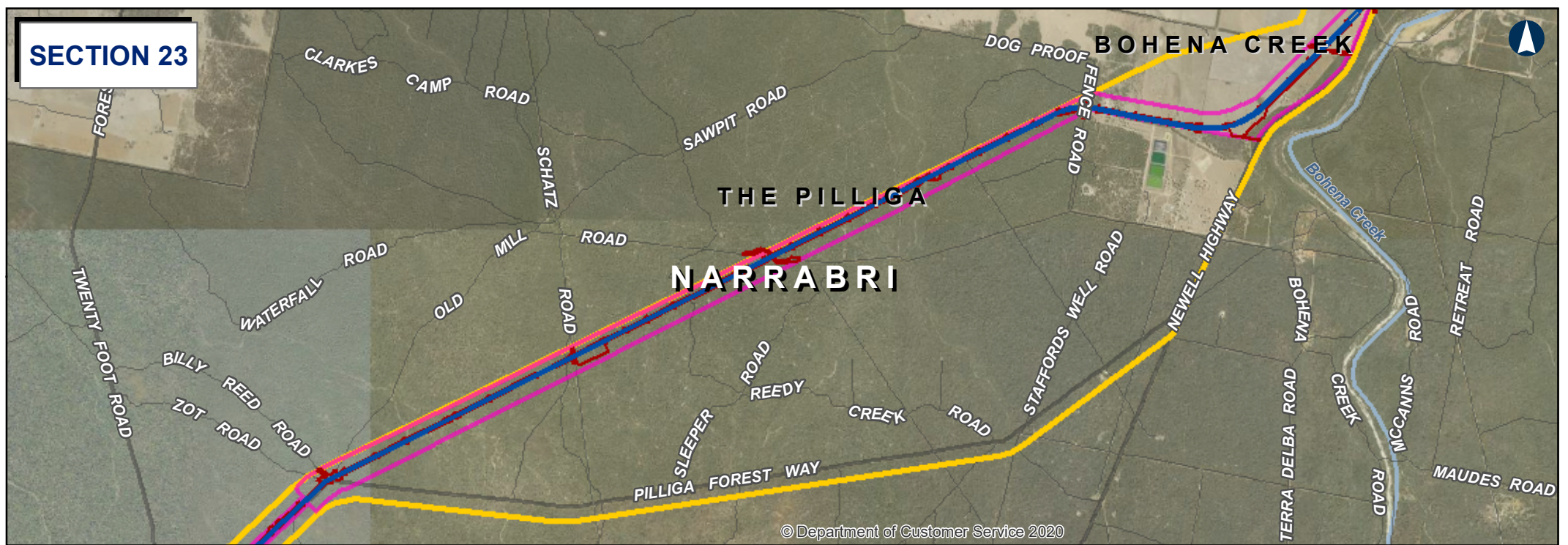
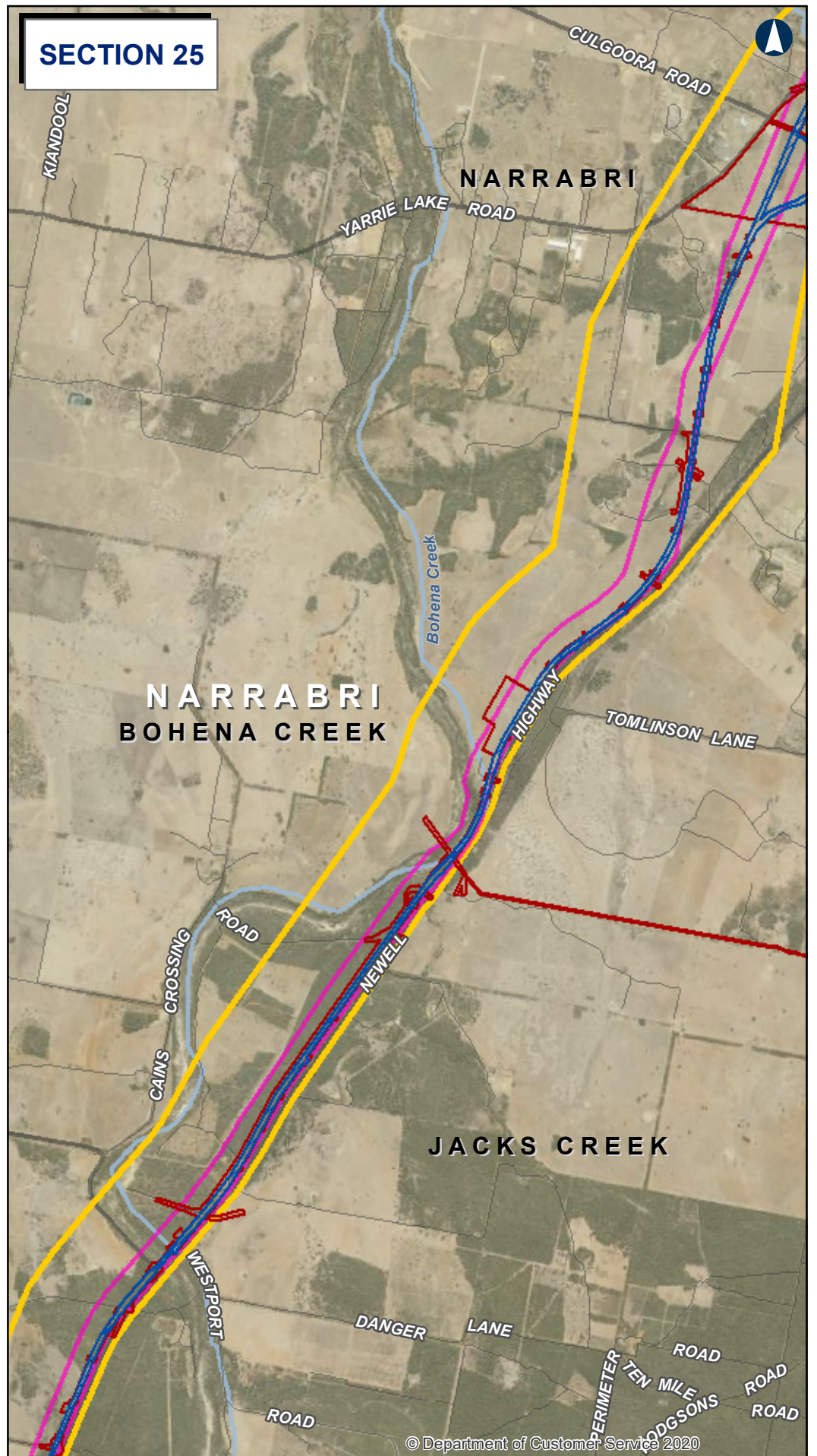
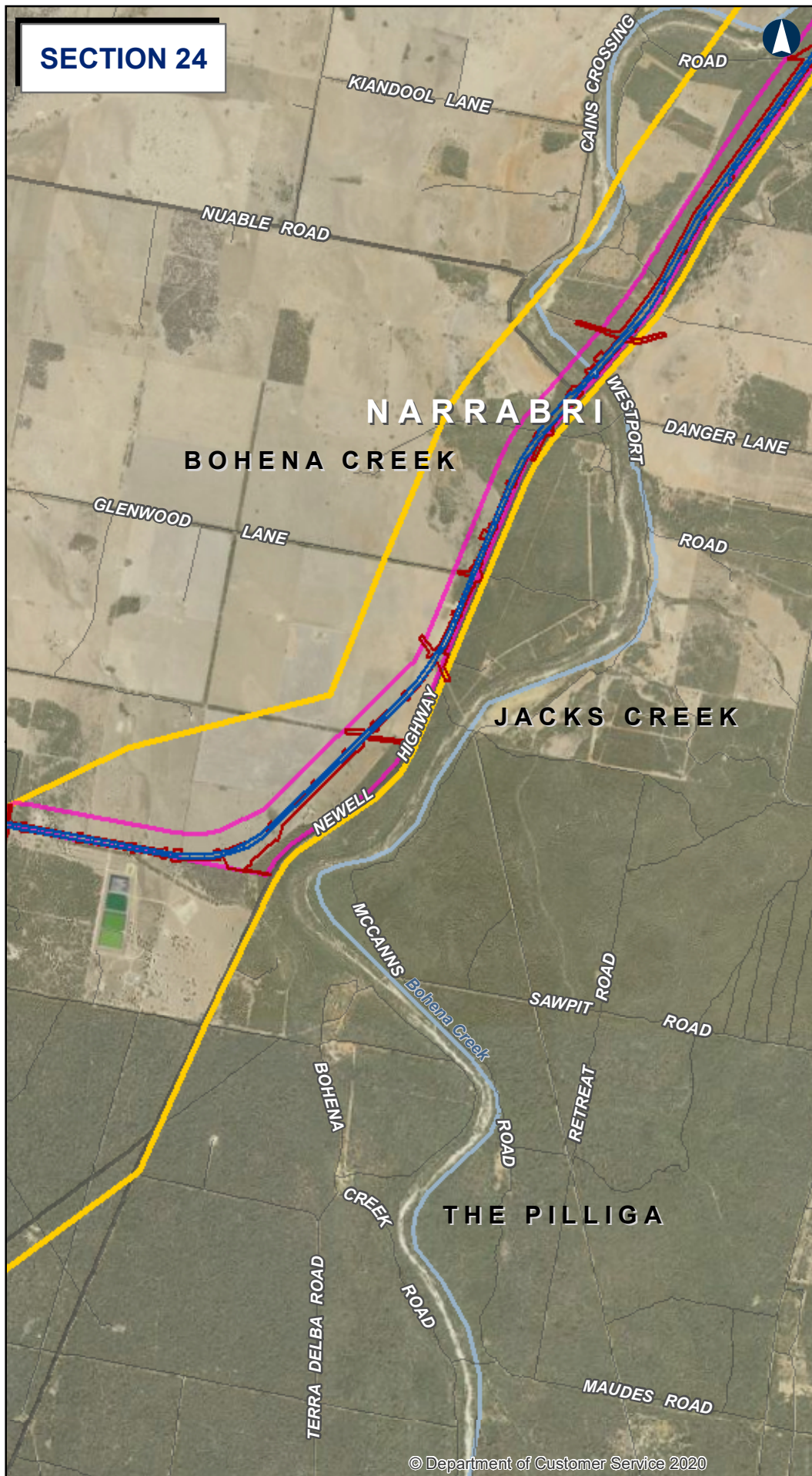
Date: 15/11/2020      Paper: A3  
 Author: IR.GIS      Scale: 1:62,000  
 Data Sources:

- Rail corridor
- Construction impact zone
- Focused area
- Study area - Phase 1
- Local government area

**INLAND RAIL**      **ARTC**

The Australian Government is delivering Inland Rail through the Australian Rail Track Corporation (ARTC), in partnership with the private sector.

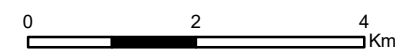




**NARROMINE TO NARRABRI**

**General Corridor and Construction Impact Zone**

**Sections 23 - 25 MAP 9**

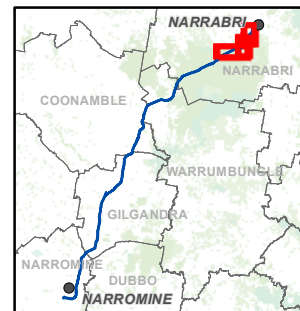


Coordinate System: GDA 1994 MGA Zone 55

ARTC makes no representation or warranty and assumes no duty of care or other responsibility to any party as to the completeness, accuracy or suitability of the information contained in this GIS map. The GIS map has been prepared from material provided to ARTC by an external source and ARTC has not taken any steps to verify the completeness, accuracy or suitability of that material. ARTC will not be responsible for any loss or damage suffered as a result of any person whatsoever placing reliance upon the information contained within this GIS map.

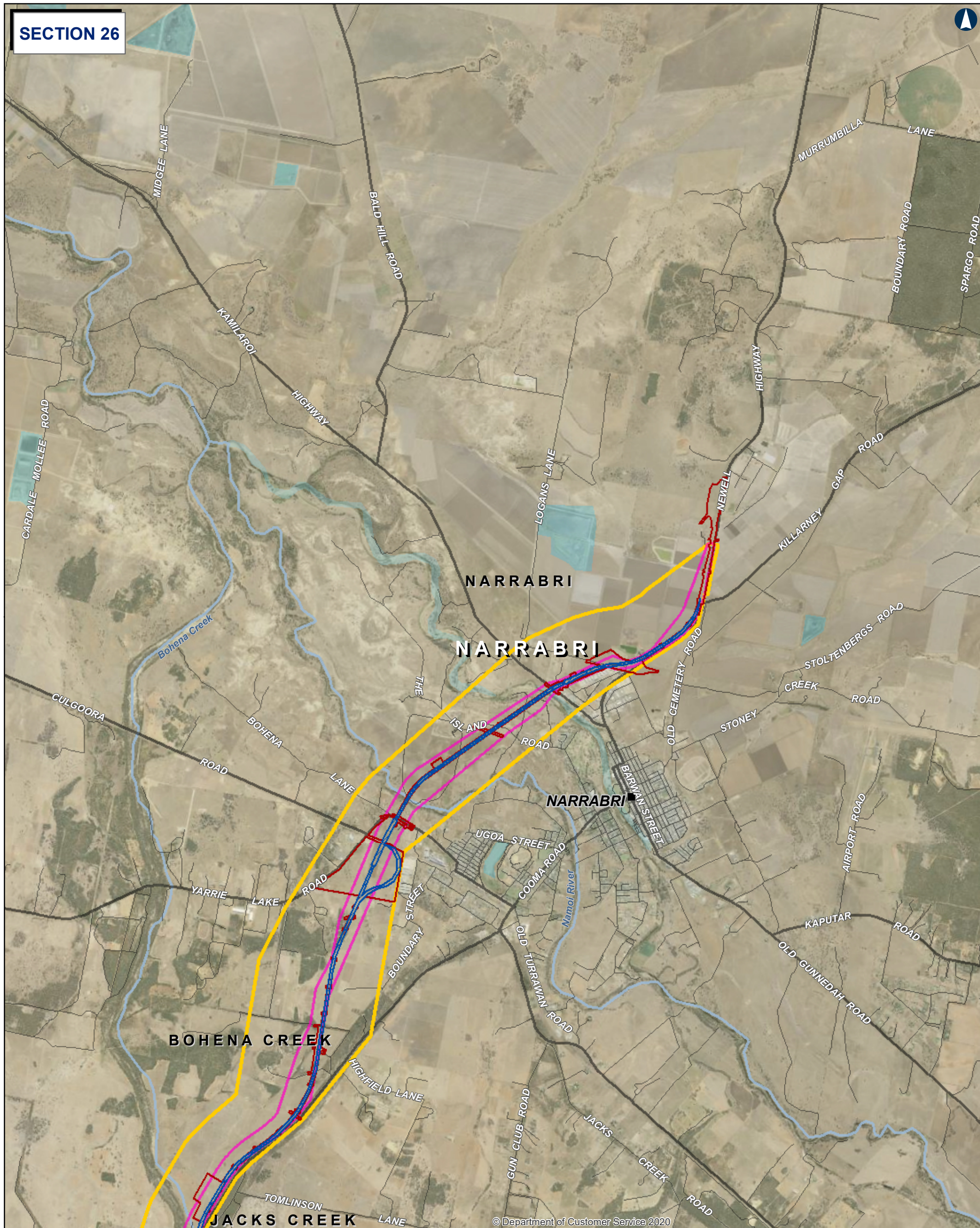
Date: 15/11/2020  
 Author: IR.GIS  
 Data Sources:  
 Paper: A3  
 Scale: 1:90,000  
 1:90,000 (Section 23)

- Rail corridor
- Construction impact zone
- Focused area
- Study area - Phase 1
- Local government area



The Australian Government is delivering Inland Rail through the Australian Rail Track Corporation (ARTC), in partnership with the private sector.



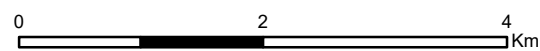


© Department of Customer Service 2020

**NARROMINE TO NARRABRI**

**General Corridor and Construction Impact Zone**

Sections 26 MAP 10

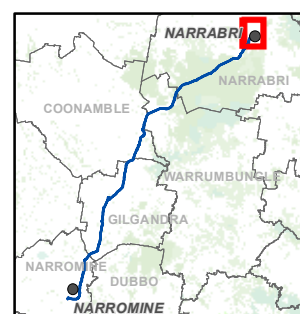


Coordinate System: GDA 1994 MGA Zone 55

ARTC makes no representation or warranty and assumes no duty of care or other responsibility to any party as to the completeness, accuracy or suitability of the information contained in this GIS map. The GIS map has been prepared from material provided to ARTC by an external source and ARTC has not taken any steps to verify the completeness, accuracy or suitability of that material. ARTC will not be responsible for any loss or damage suffered as a result of any person whatsoever placing reliance upon the information contained within this GIS map.

Date: 15/11/2020  
 Author: IR.GIS  
 Paper: A3  
 Scale: 1:62,000  
 Data Sources:

- Rail corridor
- Construction impact zone
- Focused area
- Study area - Phase 1
- Local government area



The Australian Government is delivering Inland Rail through the Australian Rail Track Corporation (ARTC), in partnership with the private sector.