



ARTC

INLAND  
RAIL

# WANGARATTA

—  
PROJECT  
REFERENCE  
GUIDE



# INLAND RAIL IN WANGARATTA

Wangaratta Station Precinct is located along the existing North East Rail corridor in Victoria. This site needs modifications to provide the clearances needed to enable the safe passage of double-stacked freight trains. Taller freight trains need 7.1m in vertical clearance and around 4.5m of horizontal clearance to safely run on the track.

## WHAT IS INLAND RAIL?

Inland Rail is a fast freight backbone from Melbourne to Brisbane that will transform how we move goods around Australia, with a direct rail transit time of less than 24 hours between these cities. It will better link businesses, farmers and producers to national and global markets and generate new opportunities for industries and regions.

Tottenham to Albury (T2A) is one of 13 projects that complete Inland Rail. T2A is planned along 305km of existing rail corridor from metropolitan Melbourne to the Victoria-NSW border at Albury-Wodonga.

This project will see modifications to existing structures and increased clearances along the rail corridor to provide sufficient height and width to support the safe running of double-stacked freight trains of 1,800 metres in length to be run on the track.

The first stage (north of Beveridge) of the T2A project to be delivered includes modifications to 12 sites along the North East Rail Line from Beveridge to Albury.

## WHAT'S HAPPENED IN WANGARATTA?

Options considered during our early design phase included lowering the track, raising or removing the existing footbridges to enable the safe movement of double-stacked freight trains. Each option has been considered by heritage and technical specialists, and have been open to community feedback to help determine the most appropriate option for Wangaratta.

Taking into account the heritage values, amenity, accessibility and connectivity in and around the station precinct, we are proposing to:

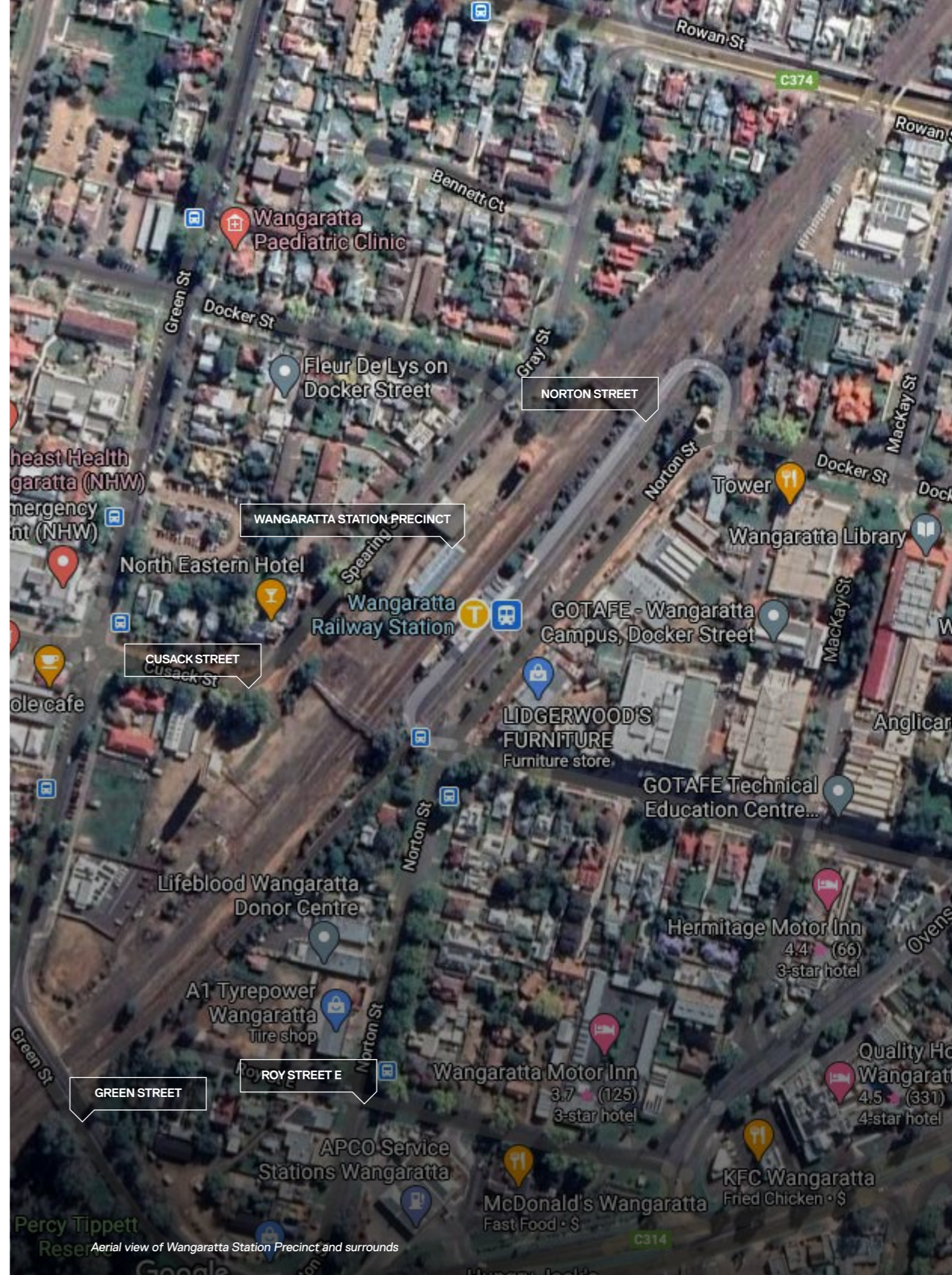
- ▶ remove the Cusack and Docker Street pedestrian footbridges and replace them with a open shared user underpass
- ▶ replace the existing Green Street bridge and lower the track in this area
- ▶ relocate the existing track on the eastern side of Wangaratta Station to the western side of the station and build a new platform on the western side of the station.

The design we're initially presenting to the community includes a shared user underpass.

The underpass will be in line with contemporary underpass design and construction, with an emphasis on clear lines of site, lighting and safety features.

This option will improve connectivity to both sides of the City, enhance mobility and align with the Victorian Government's Urban Design Framework. Other design elements in the station precinct area include:

- ▶ redeveloping "The Dive" east track area of the station, with a possibility of backfilling and linking it to the shared rail trail
- ▶ creating opportunities to reflect heritage features of the site.



## HAVE YOUR SAY ON INLAND RAIL IN WANGARATTA

We are seeking submissions on our proposed Planning Scheme Amendment application from **19 April to 17 May, 2021**.

Visit [inlandrail.artc.com.au/t2a-status](http://inlandrail.artc.com.au/t2a-status) to make a submission and find out more. See back cover for more ways to share your views and ideas.





Wangaratta Station, Wangaratta

### WHAT'S NEXT FOR WANGARATTA?

We're continuing consultation and engagement with the community over the coming months as we continue to work through various Project Approvals. A key part of this process for the first half of 2021 relates to the proposed Planning Scheme Amendment for local government areas including Wangaratta Rural City Council and the Heritage Permit process in Wangaratta.

### PLANNING SCHEME AMENDMENT

We are requesting the Victorian Minister for Planning to amend the Planning Scheme for Wangaratta Rural City Council. This means the project can progress without the need for additional planning permits, as long as conditions of the Incorporated Document are met to the satisfaction of the Minister for Planning or other relevant authority.

We are voluntarily exhibiting our Planning Scheme Amendment application to the public. Residents, businesses and other stakeholders have an opportunity to submit feedback on the proposed amendments by **17 May 2021**.

### WHAT HAVE WE HEARD SO FAR?

ARTC started engaging with the Wangaratta community in 2018, seeking local insight and feedback from residents, businesses and community groups.

We understand the community strongly desires to increase safety around the station precinct, including increased lighting and support for more security

We've heard the existing footbridges become slippery in wet weather and concerns have been raised about improving passenger services.

The community have requested to be included in engagement activities in the precinct to allow for quality connection opportunities within ARTC designs to allow for accessibility for all and that includes mobility scooters and elderly pedestrians.

### HERITAGE

The project intersects with the Victorian Heritage Register listed place and the Wangaratta Railway Station Complex. This place is protected under the *Heritage Act 2017*, which identifies and protects heritage places and objects that are of State-level significance to Victoria. Inland Rail will apply to Heritage Victoria for a permit to carry out works or activities in relation to this heritage place.

We have engaged technical advisors for on-site inspection and assessment of this heritage place. Assessment results will be entered into the relevant government databases, so this information will be available for future generations.

# MEET THE STAKEHOLDER TEAM



### SHONDELLE MATHEWS - STAKEHOLDER ENGAGEMENT ADVISOR

Meet Shondelle who has an employment history that spans 20+ years' experience working on different disciplines across Australia that include health, safety, energy and environment for the WA mining sector throughout the Pilbara, the Federal Government's Green Army programme, managing public transport services for all major events in Melbourne city and major infrastructure projects and rail.

Most recently, Shondelle worked as an Environmental Advisor for the North East Rail Line upgrade and is currently a Stakeholder and Engagement Advisor at ARTC working on the Inland Rail project. Shondelle loves the North East and enjoys the meaningful engagement that has transpired since communing with ARTC. Shondelle believes being able to listen to a community at the right time is what's most important to stay connected and empower them to work with us on delivering a world class project. When Shondelle's not working you can find her enjoying the arts, being creative, riding and watching motorcycles.



### JACINTA PIAZZA - COMMUNITY RELATIONS OFFICER

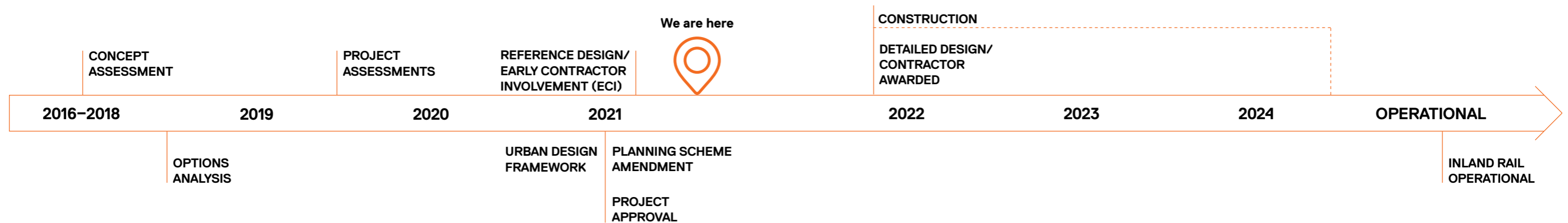
Jacinta has spent most of her adult life living in our beautiful North East Region. She was born and raised in Wangaratta and has raised her family in this area also.

For the past 10 years, Jacinta has had the opportunity to work within both larger cities and rurally in the mining and construction industry.

Jacinta is passionate about seeing our North East towns progressing into the future for our younger generations. One of her favorite activities is spending time outdoors in our wonderful valleys.



# KEY STEPS TO DEVELOP THE WANGARATTA PRECINCT UPGRADE



## Developing Inland Rail in consultation with communities

### CONCEPT ASSESSMENT (2016–2018)

Identify and assess project objectives, outcomes, benefits and route options.

Document technical issues, regulatory requirements, estimated costs, timings and potential risks and opportunities.

### CONSULTATION AND OPTIONS ANALYSIS (2018–2019)

Consultation with Council and communities to inform design principles.

### REFERENCE DESIGN/EARLY CONTRACTOR INVOLVEMENT (ECI) (2021)

Produce draft reference design to be provided for community discussion, feedback, and refinement.

Engage construction contractor before designs are finalised to review plans and suggest any revisions needed to deliver the project.

#### HAVE YOUR SAY

This ECI process will produce reference designs for each site which will be presented to the community throughout 2021. This will be presented with visualisations to help further understand the concepts.

### PLANNING AND ENVIRONMENTAL APPROVALS (2019–2021)

Undertake site investigations and specialist studies to understand environmental features, technical challenges, progress State and Federal planning and environment approvals.

### URBAN DESIGN FRAMEWORK (2020–2021)

Comprehensive design and consultation process that brings together the way the infrastructure needs to function with how it looks, feels and works for locals.

Ensure the project design is well-integrated and responds to community ideas.

#### LEARN MORE

Find out more about the Urban Design Framework by downloading our fact sheet [inlandrail.artc.com.au/urban-design-framework](http://inlandrail.artc.com.au/urban-design-framework)

### PLANNING SCHEME AMENDMENT (2021)

We're currently focused on the proposed Planning Scheme Amendment, which incorporates site-specific controls via an Incorporated Document.

This means the project can progress without the need for additional planning permits, as long as conditions of the Incorporated Document are met to the satisfaction of the Minister for Planning or other relevant authority. We are requesting the Minister for Planning amend the Planning Scheme for City of Wangaratta.

#### HAVE YOUR SAY

The Wangaratta community, council and other stakeholders can comment the proposed Planning Scheme Amendment from **April 19 to May 17, 2021**. Visit [inlandrail.artc.com.au/t2a-status](http://inlandrail.artc.com.au/t2a-status) for more information.

### DETAILED DESIGN/CONTRACTOR AWARDED (2021–2022)

Produce detailed design to be provided for further community discussion, feedback, and refinement.

Detailed design prepared by construction contractor to define specifics like car parking location, lighting, walkway locations and landscaping.

#### HAVE YOUR SAY

The detailed designs will be presented to the public for consultation. We will work closely with the community and stakeholders throughout the ECI and D&C process to ensure community feedback is incorporated into the final designs wherever possible.



Artist impression of Wangaratta Railway Station historical building, Wangaratta



### HAVE YOUR SAY ON THE DESIGN OF THE WANGARATTA RAIL UPGRADE

In April and May 2021 we'll be seeking your feedback on our proposed Planning Scheme Amendment, which includes Strathbogie Shire.

Email [victoriaprojects@artc.com.au](mailto:victoriaprojects@artc.com.au)

Drop by every **Wednesday at the kiosk on the corner of Reid and Murphy Streets, Wangaratta (10am–4pm)**

Visit [inlandrail.artc.com.au/events](http://inlandrail.artc.com.au/events) for more information.

### LEARN MORE

The Tottenham to Albury website is a comprehensive resource where we publish regular project updates, documents such as fact sheets and working group minutes, and is where you will find the interactive map.


Check out some recently updated fact sheets:

- [inlandrail.artc.com.au/managing-noise-and-vibration-fact-sheet](http://inlandrail.artc.com.au/managing-noise-and-vibration-fact-sheet)
- [inlandrail.artc.com.au/urban-design-framework](http://inlandrail.artc.com.au/urban-design-framework)
- [inlandrail.artc.com.au/flora-fauna-vic](http://inlandrail.artc.com.au/flora-fauna-vic)
- [inlandrail.artc.com.au/aboriginal-cultural-heritage-vic](http://inlandrail.artc.com.au/aboriginal-cultural-heritage-vic)
- [inlandrail.artc.com.au/vic-land-access](http://inlandrail.artc.com.au/vic-land-access)
- [inlandrail.artc.com.au/planning-scheme-amendment](http://inlandrail.artc.com.au/planning-scheme-amendment)

For more information on the latest approvals processes for the project, visit [inlandrail.artc.com.au/t2a-status](http://inlandrail.artc.com.au/t2a-status)

### WANT TO KNOW MORE?

ARTC is committed to working with communities and landowners, state and local government as a vital part of our planning and consultation work, and we value your input. If you have any questions or comments, please let us know.

 **1800 732 761**

 **[victoriaprojects@artc.com.au](mailto:victoriaprojects@artc.com.au)**

 **[inlandrail.artc.com.au/t2a](http://inlandrail.artc.com.au/t2a)**

# ARTC

The Australian Government is delivering Inland Rail through the Australian Rail Track Corporation (ARTC), in partnership with the private sector.