



INLAND RAIL

COMMUNITY CONSULTATIVE COMMITTEE

Albury to Illabo

23 June 2021

PRESENTATION OVERVIEW

- + Program Status and Project Overview
- + Community Consultation
- + Project Solutions
- + Environmental Approvals Process
- + Procurement
- + Questions

PROGRAM STATUS & PROJECT OVERVIEW

Melvyn Maylin

Project Director

QUESTIONS RECEIVED

- + How many passing loops are in the A2I project?
 - + Five existing passing loops (Gerogery, Culcairn North, Yerong Creek, Uranquinty, Bowmen and the twin tracks between Junee and Illabo)
- + What works are planned to extend or build passing loops for the Inland Rail Project?
 - + The only works planned for the A2P project is the construction of a new passing loop in Daroobalgie (near Forbes)
- + How many level crossings are in the A2I project?
 - + A2I - Approx. 50 level crossings (public and private) – Agreements under review
 - + Approx. 40% of public level crossings have active controls
 - + At this stage, Inland Rail have no plans to close any level crossings

QUESTIONS RECEIVED

+ More information on axle loads?

AXLE	MAX SPEED
21 tonnes	115km/h
25 tonnes	80km/h

Albury to Illabo

Enhancing the rail corridor in southern NSW



INLAND
RAIL



RAIL CORRIDOR

Enhancements or modifications to 12 major project sites along the existing 185km rail corridor



CAPACITY

Accommodating 1.8km-long double-stacked freight trains



TRACKWORK

Existing tracks may be:

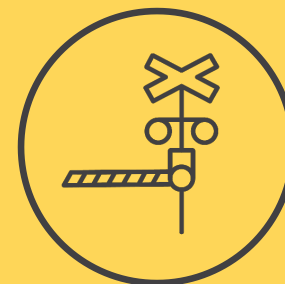
- + lowered to provide clearance under some road bridges
- + moved sideways to provide clearances between tracks



BRIDGES

Anticipated modifications to:

- + footbridges
- + road bridges



LEVEL CROSSINGS

Anticipated modifications to level crossings (horizontal and vertical clearances)



INFRASTRUCTURE

Anticipated modifications to:

- + signal structures
- + aerial cables

Removing rundown and out-of-use structures in the clearance zone

PROJECT PROGRESS



LEGEND

● CURRENT STATUS
Q1 2021

PROJECTS

PROJECT STAGES

VICTORIA		CONCEPT ASSESSMENT	REFERENCE DESIGN	DETAILED DESIGN	PROJECT APPROVAL	CONSTRUCTION	OPERATION
1	Tottenham to Albury		●				
NEW SOUTH WALES		CONCEPT ASSESSMENT	REFERENCE DESIGN	DETAILED DESIGN	PROJECT APPROVAL	CONSTRUCTION	OPERATION
2	Albury to Illabo		●				
3	Illabo to Stockinbingal		●				
4	Stockinbingal to Parkes		●	●			
5	Parkes to Narromine						●
6	Narromine to Narrabri		●				
7	Narrabri to North Star (Phase 1)					●	
	Narrabri to North Star (Phase 2)		●				
8	North Star to NSW/Qld Border		●				
QUEENSLAND		CONCEPT ASSESSMENT	REFERENCE DESIGN	PROJECT APPROVAL	DETAILED DESIGN	CONSTRUCTION	OPERATION
9	NSW/Qld Border to Gowrie		●				
10	Gowrie to Helidon	PPP	●				
11	Helidon to Calvert		●				
12	Calvert to Kagaru		●				
13	Kagaru to Acacia Ridge and Bromelton		●				

PROJECT OVERVIEW

ALBURY TO ILLABO

- + Spans 185kms of existing rail corridor from the Victoria-New South Wales border at Albury, travelling north-northeast through Wagga Wagga and Junee to Illabo.
- + An 'Enhancement' project requiring horizontal and vertical clearance works at specific sites, to accommodate the operation of double stacked trains.
- + State Significant Infrastructure declaration in May 2018.
- + Environmental Impact Statement (EIS) approvals pathway has commenced.
- + Appointment of a service provider, WSP, to deliver the Reference Design and EIS was announced in October 2020.
- + Early Reference Design delivered in January 2021.
- + Declared Critical State Significant Infrastructure in March 2021.



ALBURY TO ILLABO PROJECT OVERVIEW



Feasibility includes:

- + Community consultation
- + Site Investigations
- + Feasibility design
- + Environment Impact Statement

Investigations include:

- + Ecological surveys
- + Geotechnical surveys
- + Cultural heritage surveys
- + Utility identification surveys
- + Noise, air quality and vibration surveys



COMMUNITY CONSULTATION
Heath Martin
Stakeholder Engagement Manager

COMMUNITY CONSULTATION

Completed engagement activities since February 2021

- + Held initial CCC's in February - Albury and Wagga Wagga
- + Briefed local MPs for Albury and Wagga Wagga, Cootamundra
- + Completed 30% reference design engagement
- + Land Access Agreements and Investigations (Noise, Heritage, Fauna Investigations, Ground water monitoring, Geo-tech)
- + Monthly engagement meetings with TfNSW
- + Progressed Master Inland Rail Development Agreements (MIRDA) with all A2I Council's
- + Mail out to site neighbours and affected landowners, with project update and enhancement site design solutions brochure.
- + Currently undertaking 70% reference design engagement

COMMUNITY CONSULTATION – MAY, JUNE & JULY 2021



Reference design engagement (70%)

Information Sessions

- + 4 x community info sessions
- + 1 x online information presentation

Stakeholder Meetings & Presentations

- + Albury, Greater Hume, Lockhart, Wagga Wagga and Junee Councils
- + Wagga Business Chamber, Department of Education, Emergency Services, Impacted Schools
- + TfNSW, ARTC, MPs, Crown Lands
- + Inland Rail Conference
- + Social Impact Assessment

COMMUNITY CONSULTATION

Date/Time	Location	Type
Saturday 29 th May 2021 10:30am-12:30pm	Wagga Marketplace, Baylis Street, Wagga Wagga	Community Information Session
Thursday 17 th June 2021 11:00am-1:00pm	7 Humphrys Street, Junee (outside the Newsagency)	Community Information Session
Wednesday 23 rd June 2021 9:00am-12:00pm	Robert Brown Room Albury City Council	Community Consultative Committee (CCC) – Albury and Greater Hume Subcommittee
Wednesday 23 rd June 2021 2:00pm-5:00pm	Quest Wagga Wagga	Community Consultative Committee (CCC) – Lockhart, Wagga Wagga and Junee Subcommittee
Friday 25 th June 2021 10:30am-12:30pm	QEII Square, Dean Street Albury	Community Information Session
Thursday 8 th July 2021 11:00am-1:00pm	Balfour street Culcairn (outside the Bakery)	Community Information Session



A2I COMMUNITY CONCERNS

- + Operational concerns:
 - + more frequent and higher trains
 - + Safety and delays at crossings
 - + Noise and visual amenity impacts
 - + Pedestrian access
- + Construction impact concerns:
 - + Noise and traffic impacts
 - + Alternate routes causing impacts to vehicles, pedestrian and bicycles
 - + Staging of construction sites and closure timeframes for bridge replacements
- + General concerns:
 - + Pedestrian access and DDA compliant Footbridges
 - + Road-Rail Interfaces including grade separation and level crossings



HOW WE ARE LISTENING

- ▶ Incorporating DDA compliance and the addition of a ramp on the Eastern side of the Albury Station/Hume Highway Footbridge.
- ▶ Provided in principle agreement to Greater Hume Council to gift the decommissioned Culcairn footbridge.
- ▶ Agreement to work collaborative on associated works required at Pearson Street Bridge track lowering
- ▶ DDA compliance and working to accommodate the active travel plan at Cassidy footbridge
- ▶ Pedestrian access on Edmondson Street Bridge and future proofing for school drop off zone stairs
- ▶ Retaining the footbridge at Wagga Station and including DDA compliance
- ▶ Exploring HML in the Kemp Street Bridge design and extra wide pedestrian access to allow a viewing area.
- ▶ Provided in principle agreement to Junee Council to gift the decommissioned Junee Station footbridges.

SPONSORSHIPS & DONATIONS

Funding between \$1000 – \$4000 for individuals and organisations in regional areas along the Inland Rail route that contribute to local and regional prosperity, well-being and sustainability.

- + For activities, events or projects that will benefit the local community.
- + 4 rounds per year.

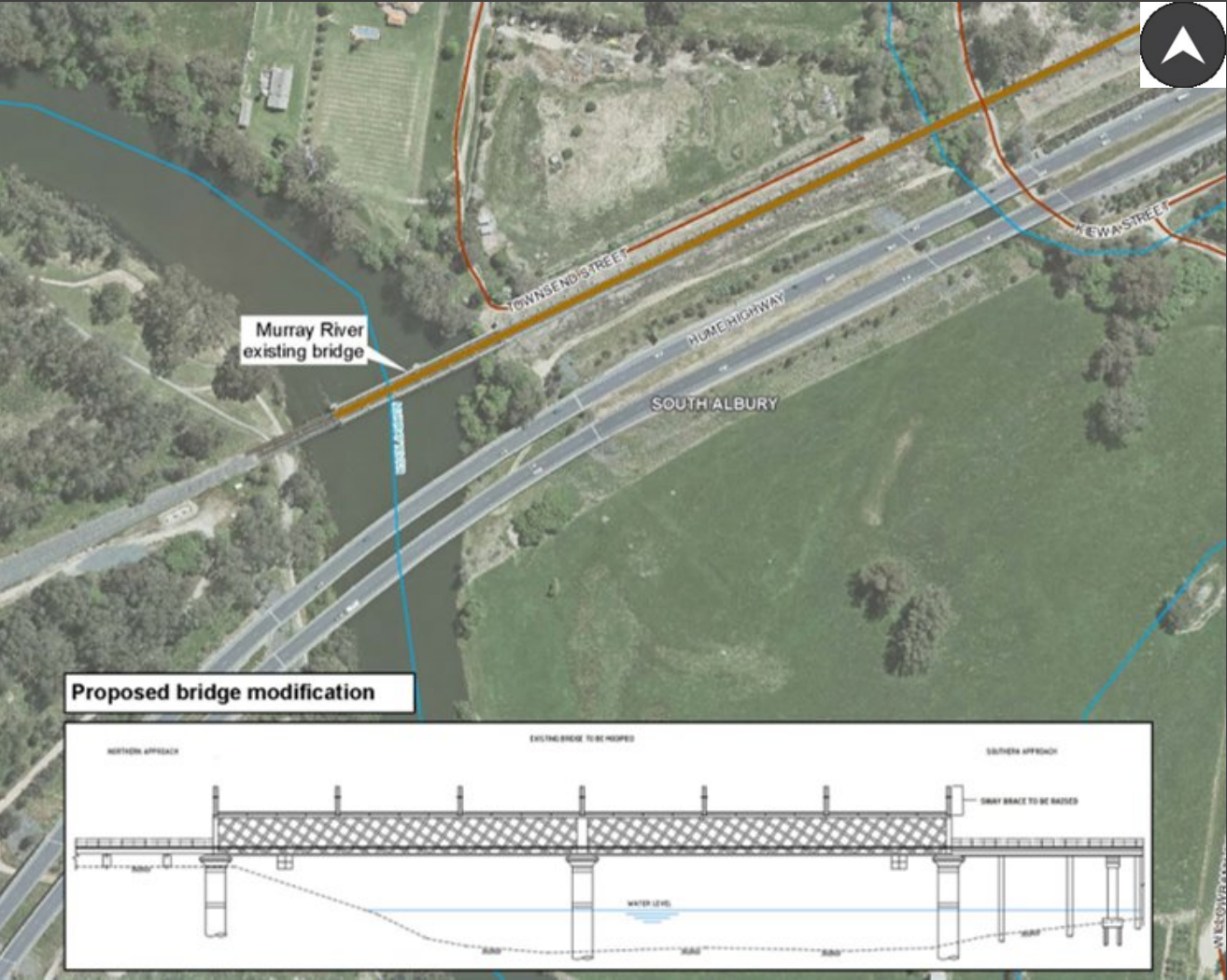
Recent Local Recipients

- + Albury Historical Society
- + Albury Wodonga Food Share
- + Table Top Rural Fire Brigade
- + AFL Riverina
- + Kurrajong
- + Wagga Wagga Women’s Health Centre
- + Junee High School

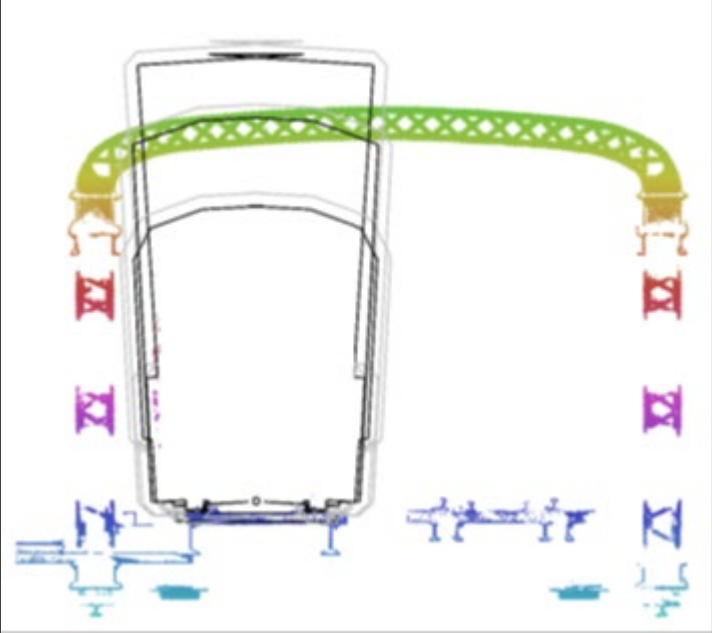


ALBURY PACKAGE

MURRAY RIVER BRIDGE



+ Bridge modification



MURRAY RIVER BRIDGE

Current



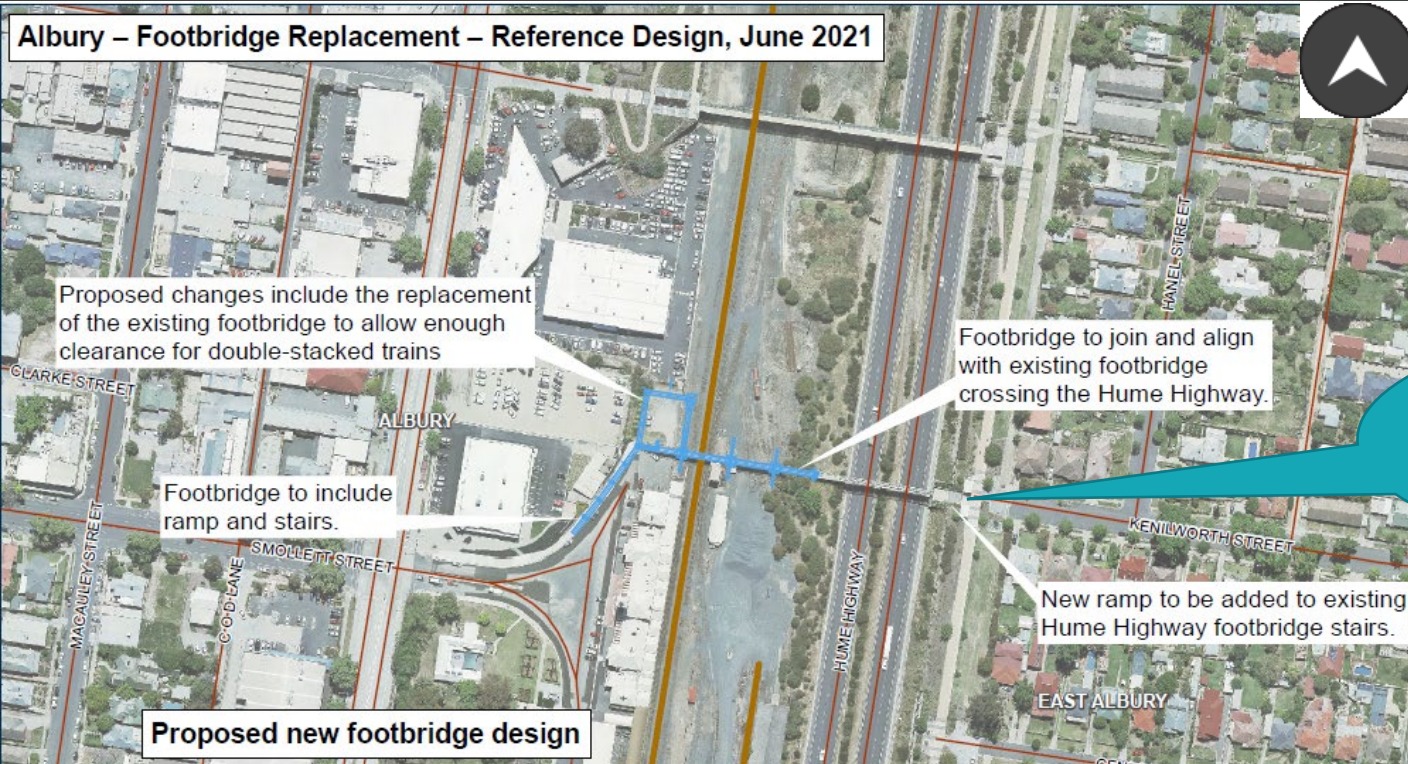
- + Lifting sway braces approx. 1.9m to enable Double-stacked trains.
- + Associated steel bridge modifications and strengthening works.

Proposed
(indicative only)



ALBURY STATION FOOTBRIDGE

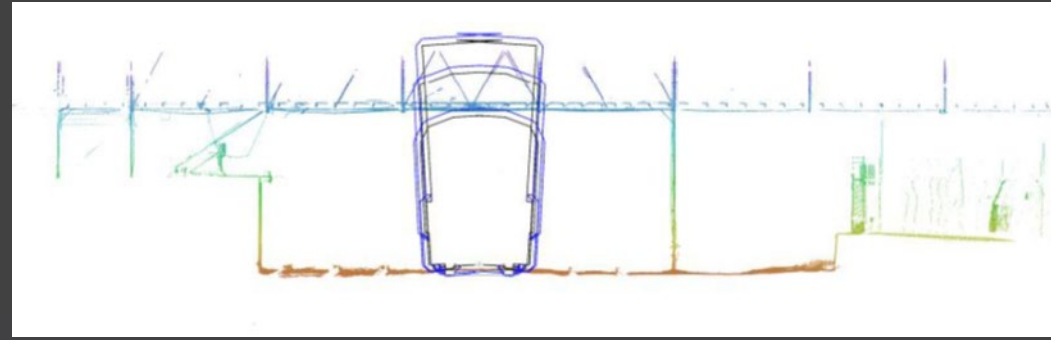
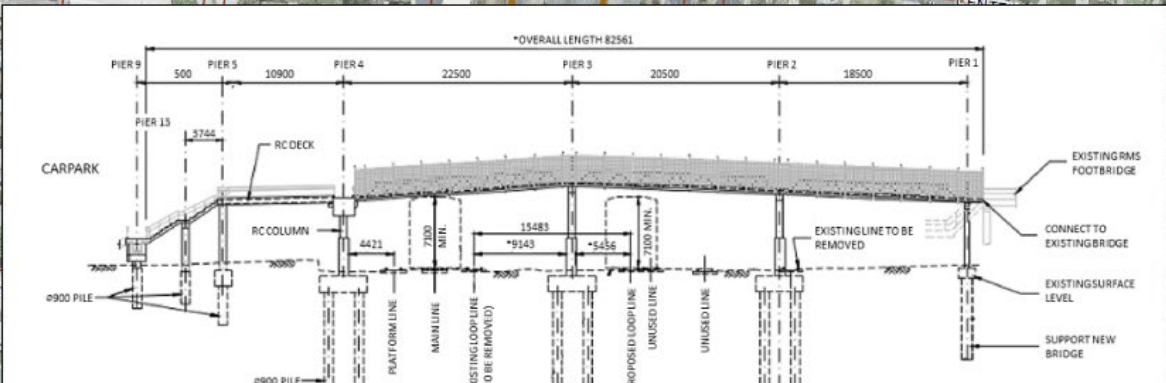
Albury – Footbridge Replacement – Reference Design, June 2021



+ Bridge replacement and associated works.

DDA compliance and the addition of a ramp on the eastern side

Proposed new footbridge design



ALBURY STATION FOOTBRIDGE

Current



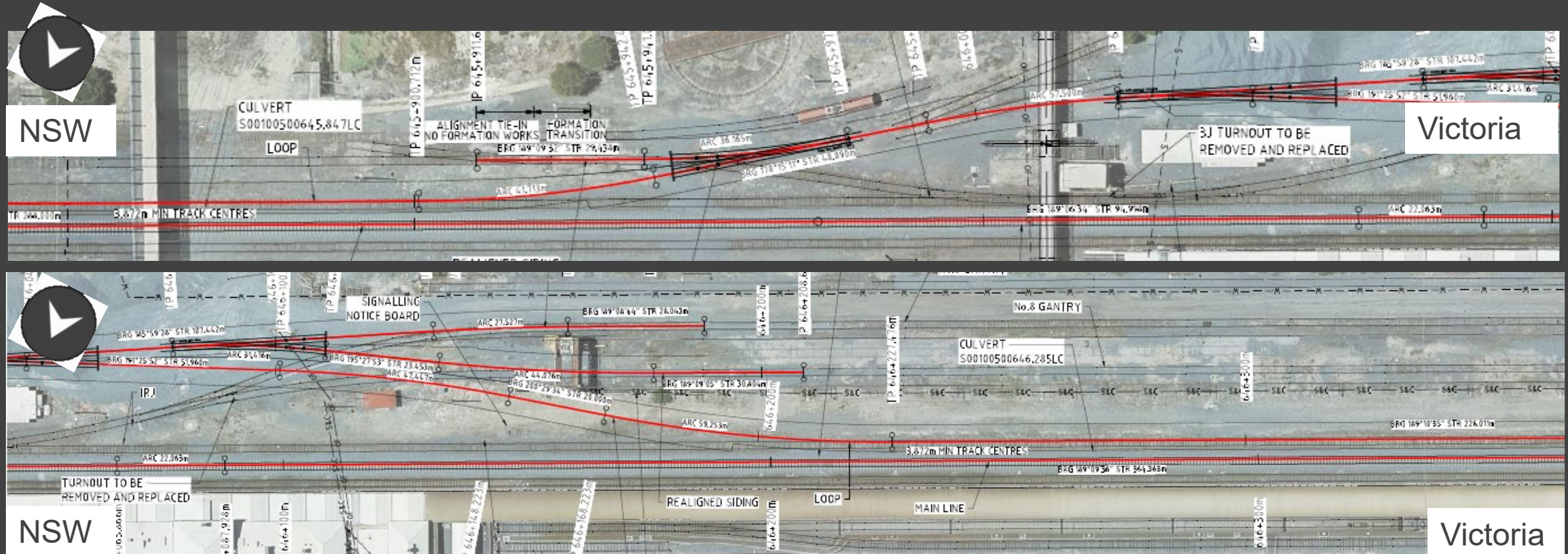
- + Lift footbridge for vertical clearance
- + Tie into existing footbridge over highway
- + DDA compliant ramps on both sides
- + Vertical protection screens

Proposed
(indicative only)



ALBURY STATION YARD

+ Track slews and associated works



ALBURY STATION YARD

Current

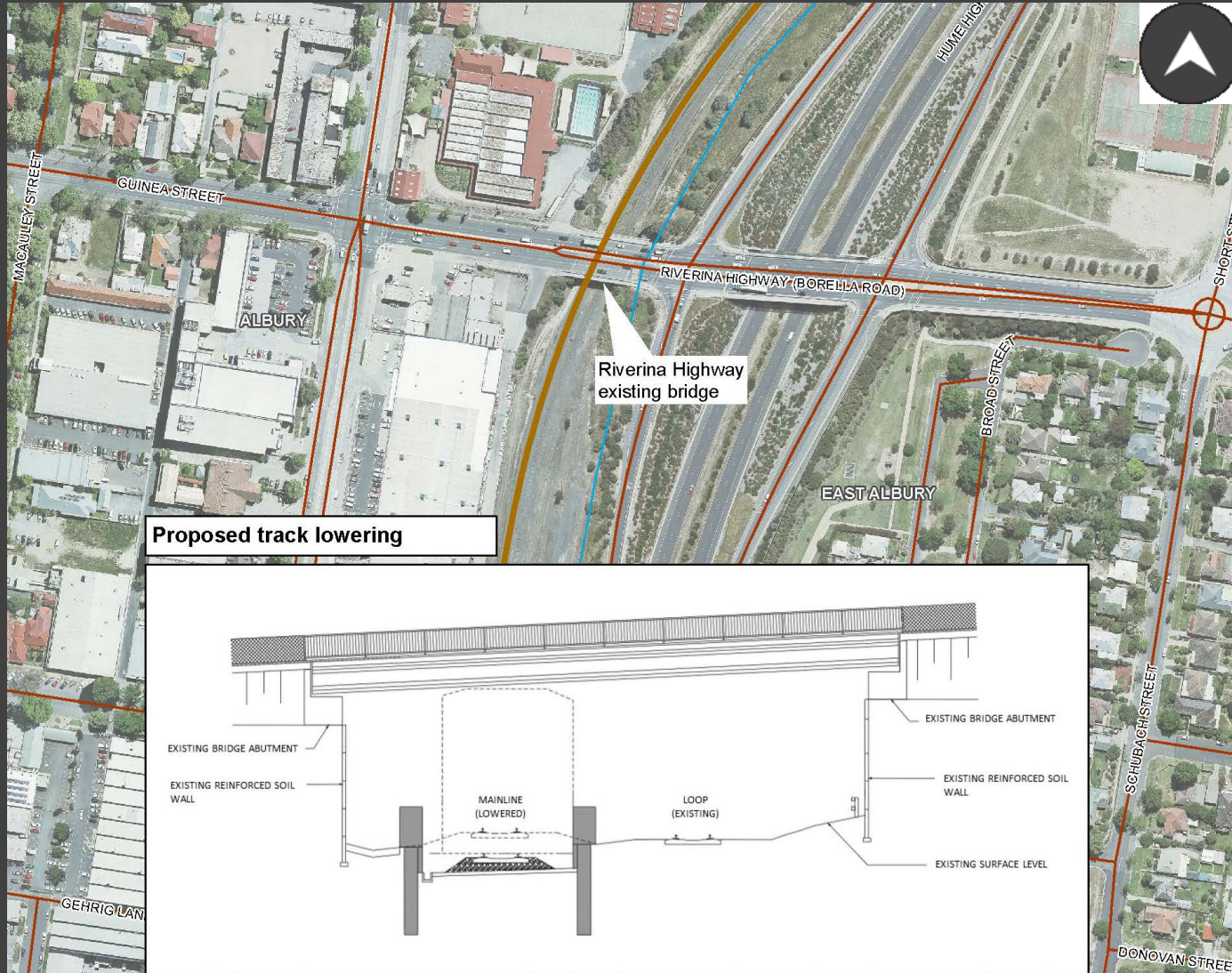


- + Slew track around around signal box
- + Signal box is heritage listed

Proposed
(indicative only)



BORELLA RD BRIDGE



+ Track lowering and associated works.



BORELLA RD BRIDGE

Current

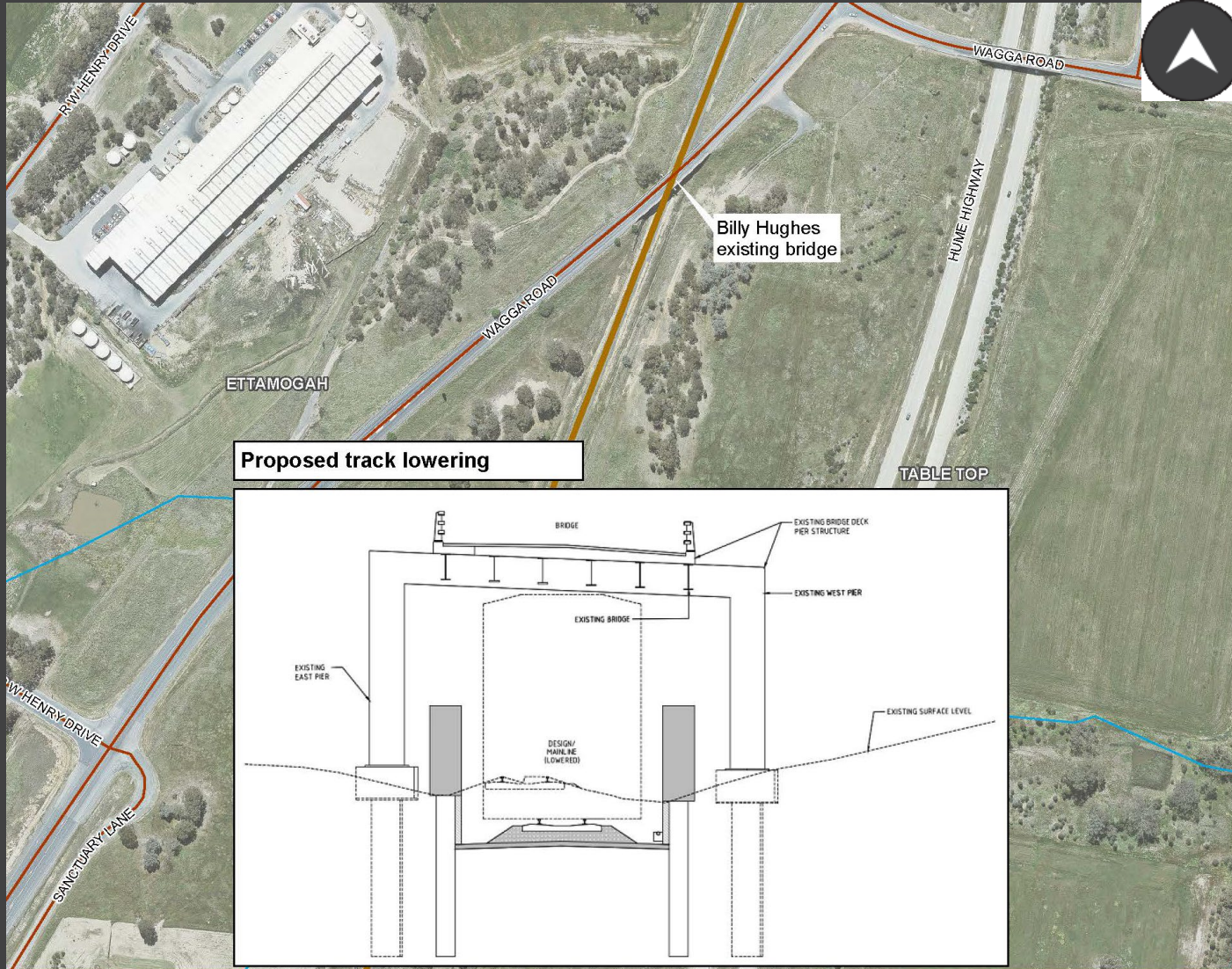


- + Track lower for vertical clearance
- + Concrete retaining walls
- + Collision protection

Proposed
(indicative only)



BILLY HUGHES BRIDGE



- + Track lowering and associated works.

BILLY HUGHES BRIDGE

Current



- + Track lower for vertical clearance
- + Concrete retaining walls

Proposed
(indicative only)



GREATER HUME – LOCKHART PACKAGE

CULCAIRN FOOTBRIDGE

- + Footbridge Removal and associated works.
- + Currently decommissioned.



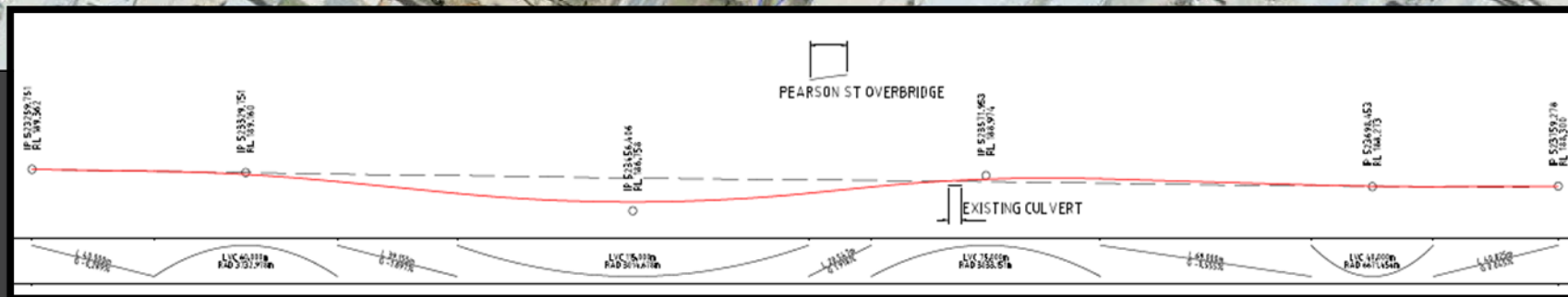
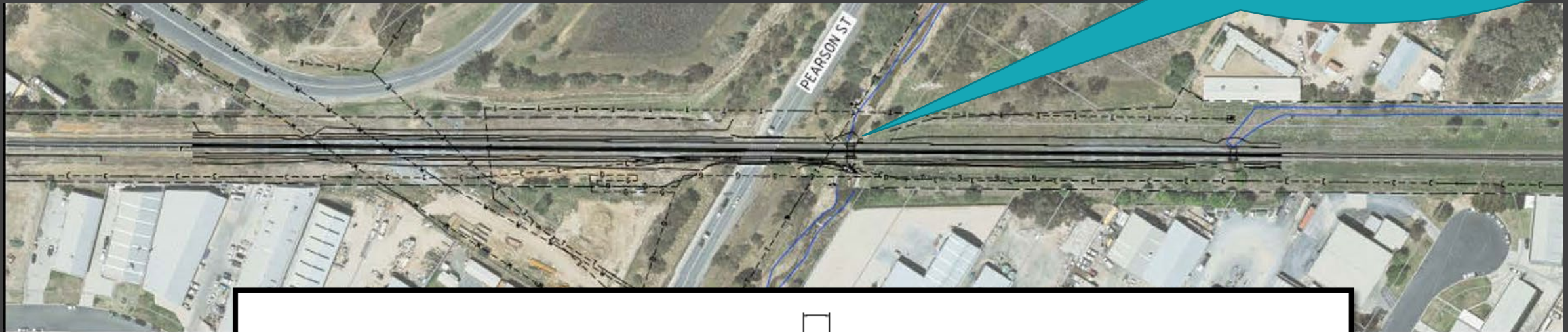
In principle agreement to gift council the decommissioned footbridge

WAGGA WAGGA PACKAGE

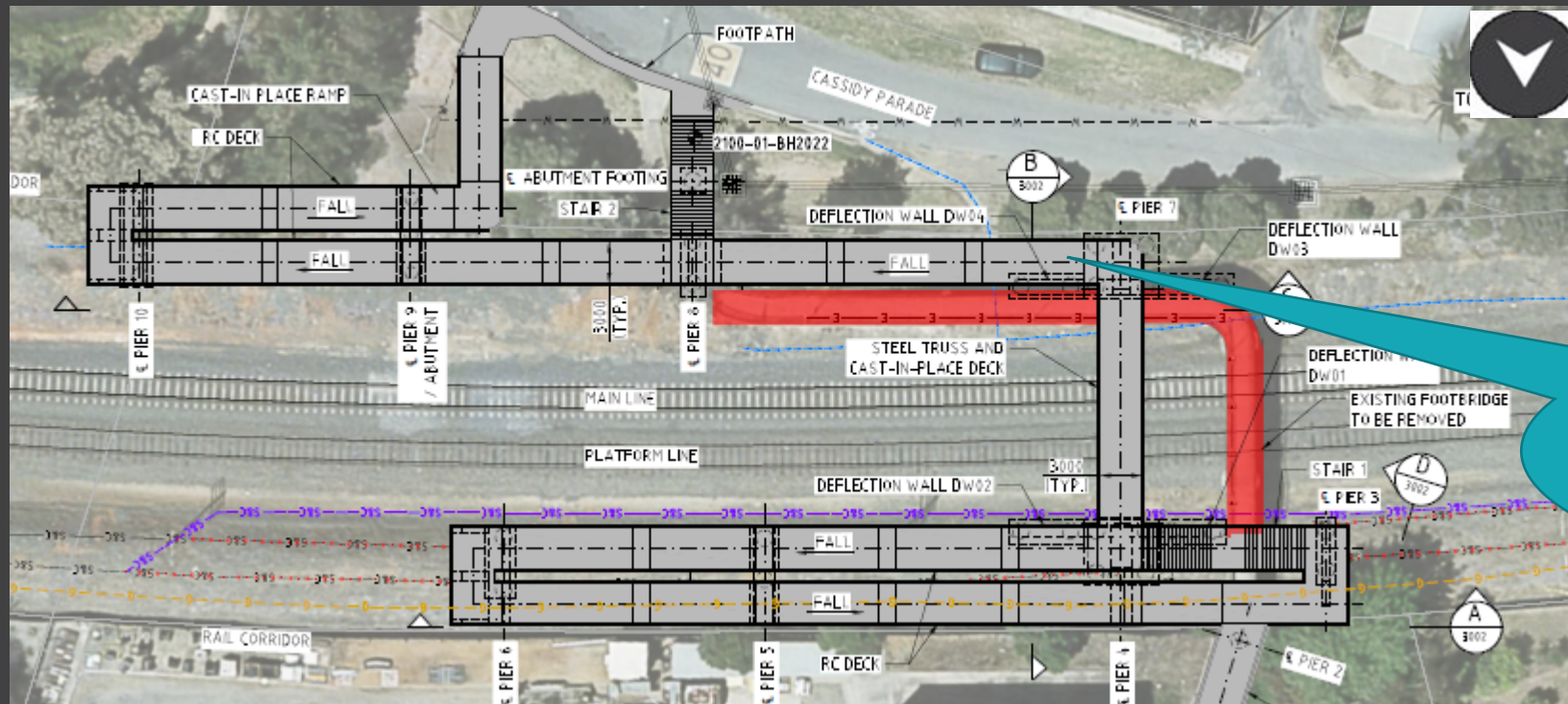
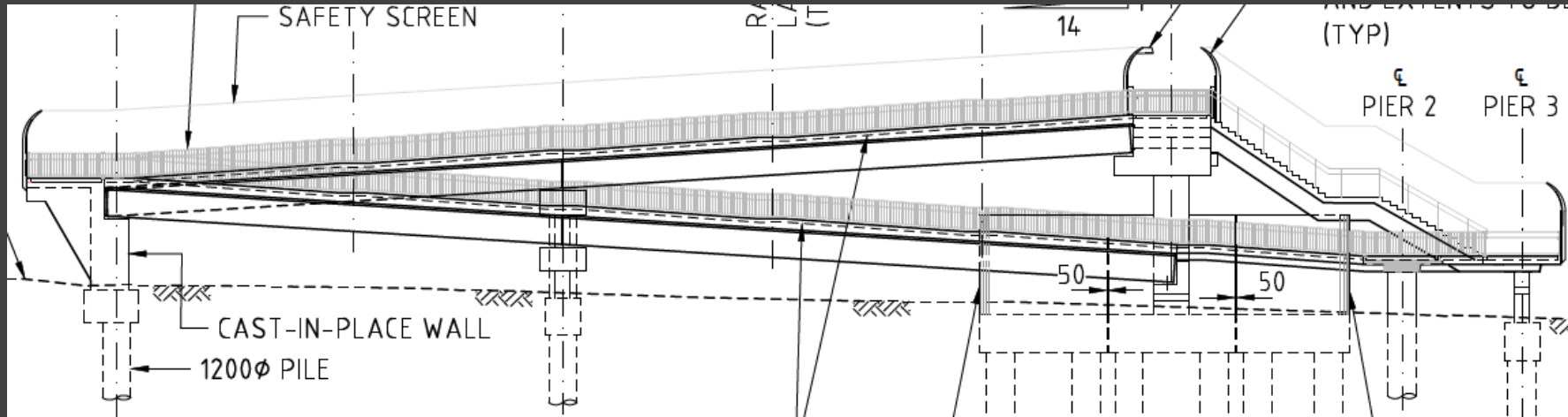
PEARSON ST BRIDGE

- + Track lowering and associated works.

Agreement to work collaborative on associated works



CASSIDY FOOTBRIDGE



+ Bridge replacement and associated works.

DDA compliance and working to accommodate the active travel plan

CASSIDY FOOTBRIDGE



- + Replacement - Raised bridge
approx. 2 m

- + 3 m wide path to accommodate
Active cycle path

- + DDA compliant ramps

- + Vertical pedestrian safety screens

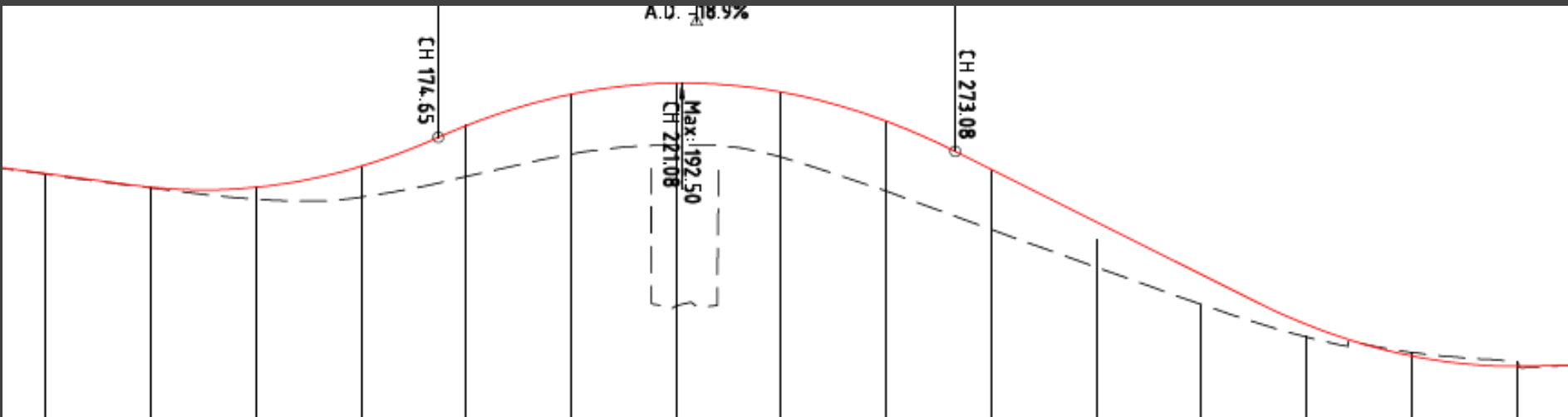


Proposed
(indicative only)

EDMONDSON STREET BRIDGE

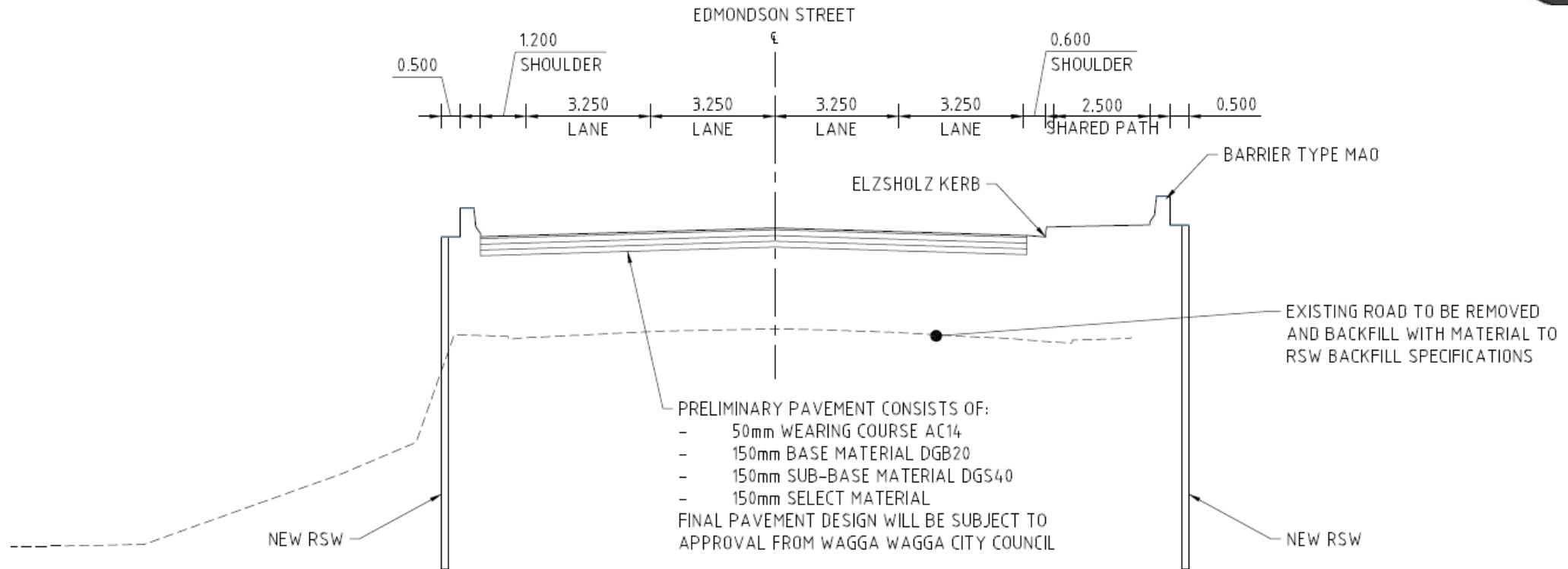


Pedestrian access



+ Bridge replacement and associated works.

EDMONDSON STREET BRIDGE



TYPICAL SECTION
EDMONDSON STREET - NORTH OF BRIDGE
SCALE 1:100

EDMONDSON STREET BRIDGE

- + Raised bridge approx. 2 m
- + Re-Build abutments
- + Tie into existing road interfaces
- + 2.5 m wide pedestrian path on eastern side
- + Vertical pedestrian safety screens



EDMONDSON ST BRIDGE CONSTRUCTION

Schedule

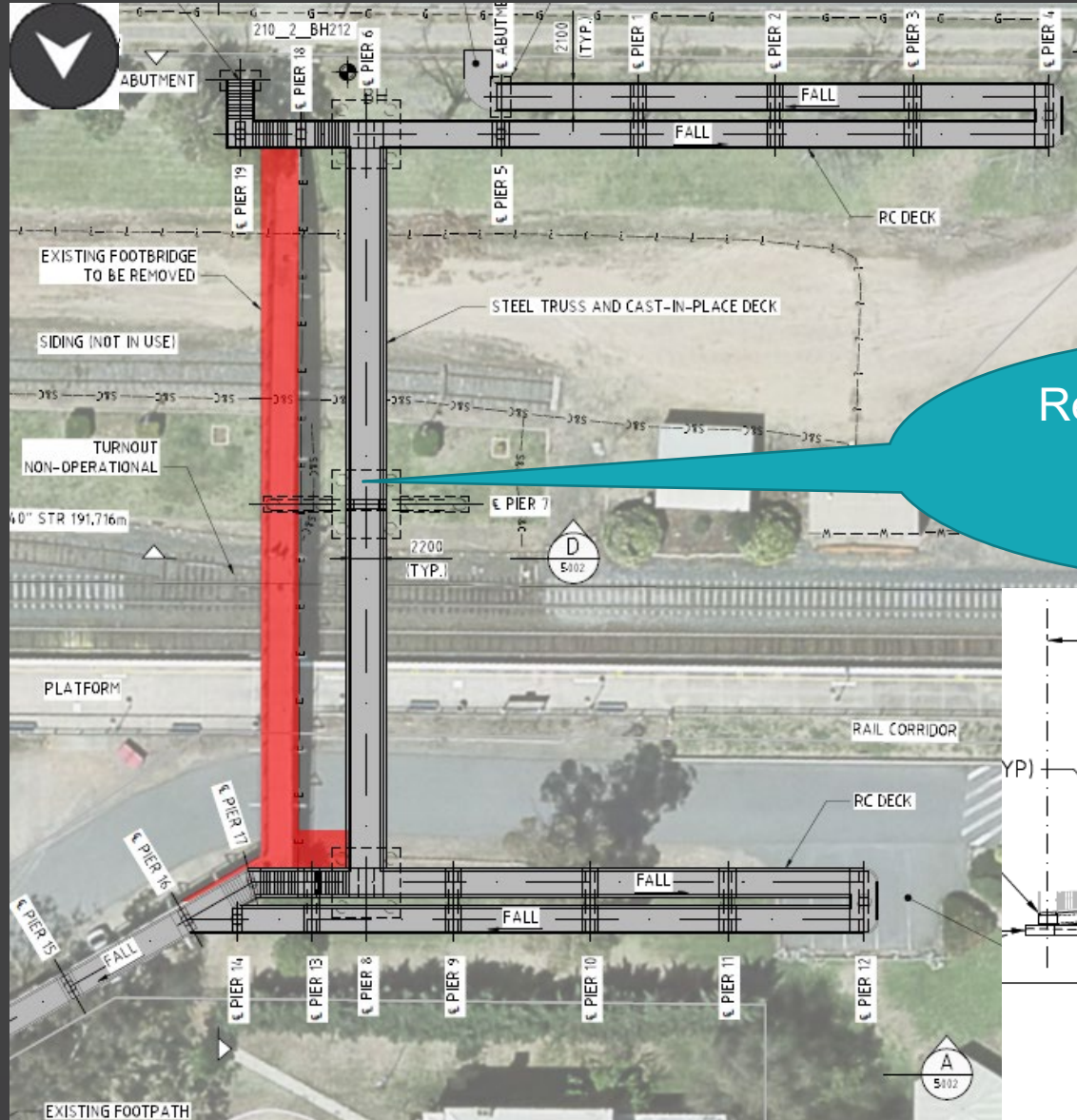
- + Currently shows 8-month closure, assumes standard working hours. Assumptions to be revised in collaboration with Council and community.
- + Detour via Docker St proposed

Site office and access

- + Office in rail corridor
- + Access via Erin St

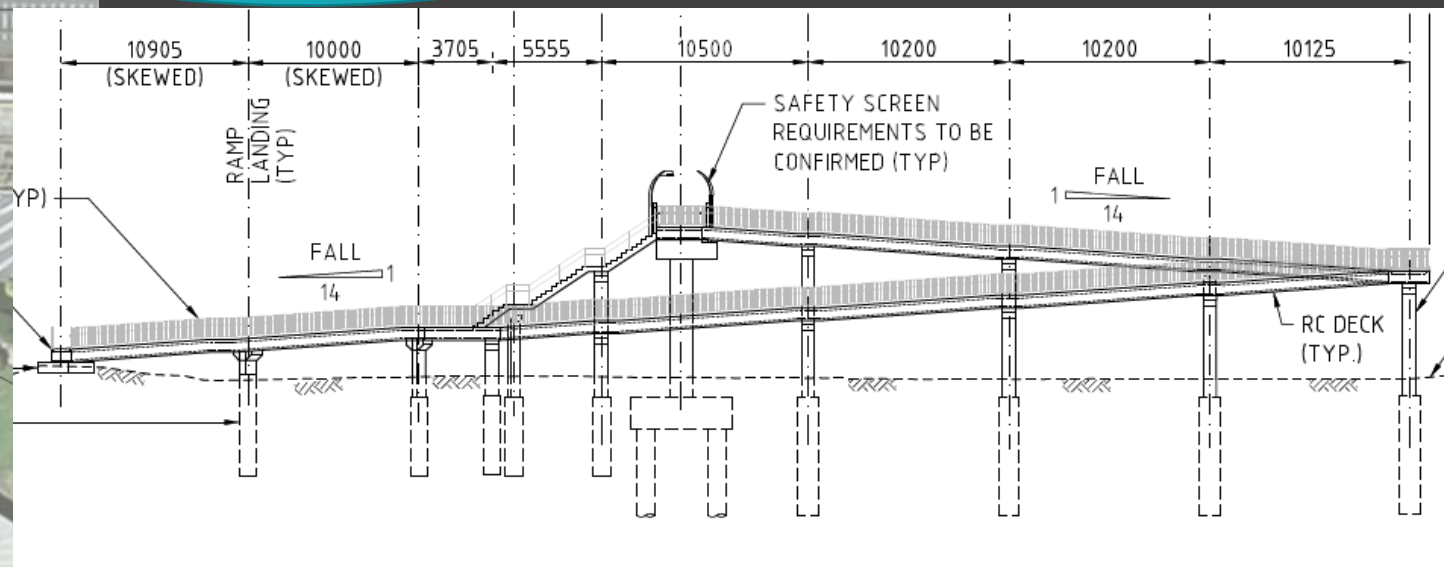


WAGGA STATION FOOTBRIDGE



+ Bridge replacement and associated works.

Retaining the footbridge and including DDA compliance



WAGGA STATION FOOTBRIDGE

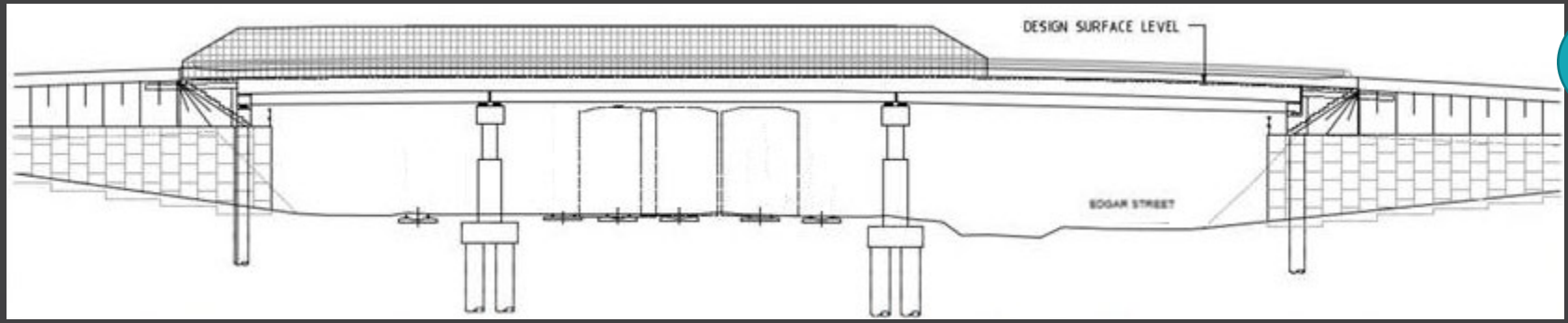
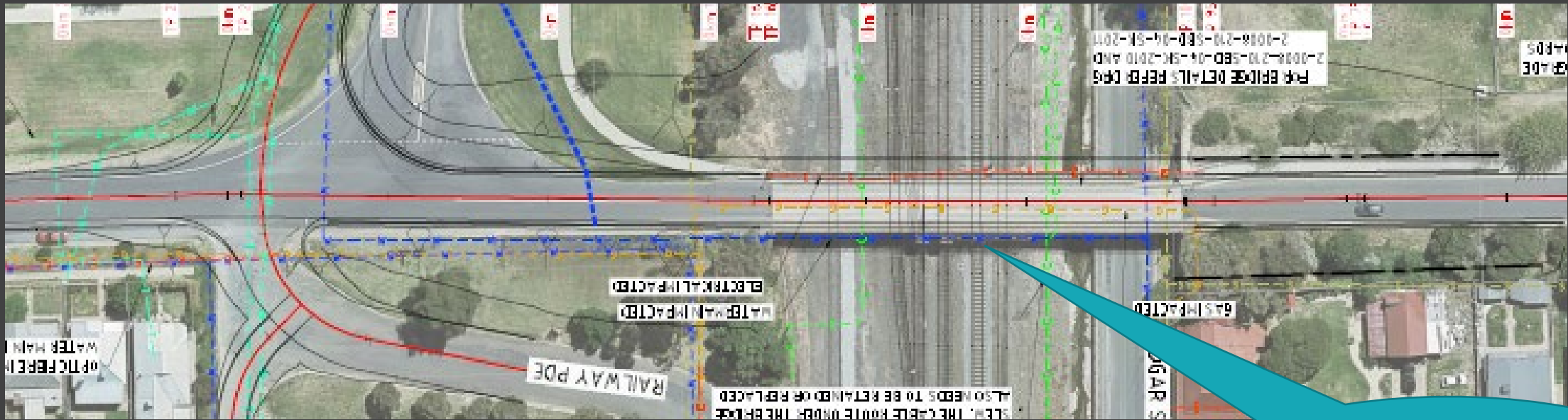
- + Raised bridge approx. 2 m
- + 2 m wide pedestrian path on eastern side
- + DDA compliant ramps
- + Vertical pedestrian safety screens



JUNEE PACKAGE

KEMP STREET BRIDGE

- + Bridge replacement (online) and associated works.



Exploring HML and extra wide pedestrian access

KEMP STREET BRIDGE- REPLACEMENT (ONLINE)

- Pedestrian access and throw screens
- lifted for vertical clearance
- HML capacity
- 8-month construction timeframe.



JUNEE STATION FOOTBRIDGE - REMOVAL



- + The Junee Station footbridge will be removed to allow for the passage of double-stacked freight trains.
- + Current vertical clearance 4.9m (7.1m required).

In principle agreement to gift council the decommissioned footbridge

Visualisations are for illustrative purposes and not to scale.

OLYMPIC HIGHWAY OVERPASS – TRACK MODIFICATION

←
Cootamundra

→
Junee



- + Track reconfiguration works to allow a single track to run across the bridge (currently two tracks) to enable safe passage of double-stacked trains.
- + Associated minor modification and strengthening works to bridge superstructure.

YARD & TRACK WORK



SITE	TREATMENT
Albury Station Yard	Track modifications - Relocation of Loop Line behind signal box adjacent to Kenilworth St Pedestrian Bridge (Station footbridge)
Table Top	Removal of gantry and attached redundant signals
Culcairn Yard	Loop Line track slews
Henty Yard	Main Line track slews
Yerong Creek Yard	Main Line track slews
The Rock Yard	Gantry replacement with alternative forms
Uranquinty Yard	Main Line track slews
Bomen Yard	Main Line and Loop Line track slews
Harefield Yard	Loop Line track slews
Junee to Illabo Dual Track	Main Lines track slews (both tracks)

ENVIRONMENTAL APPROVALS PROCESS

Wayne Window

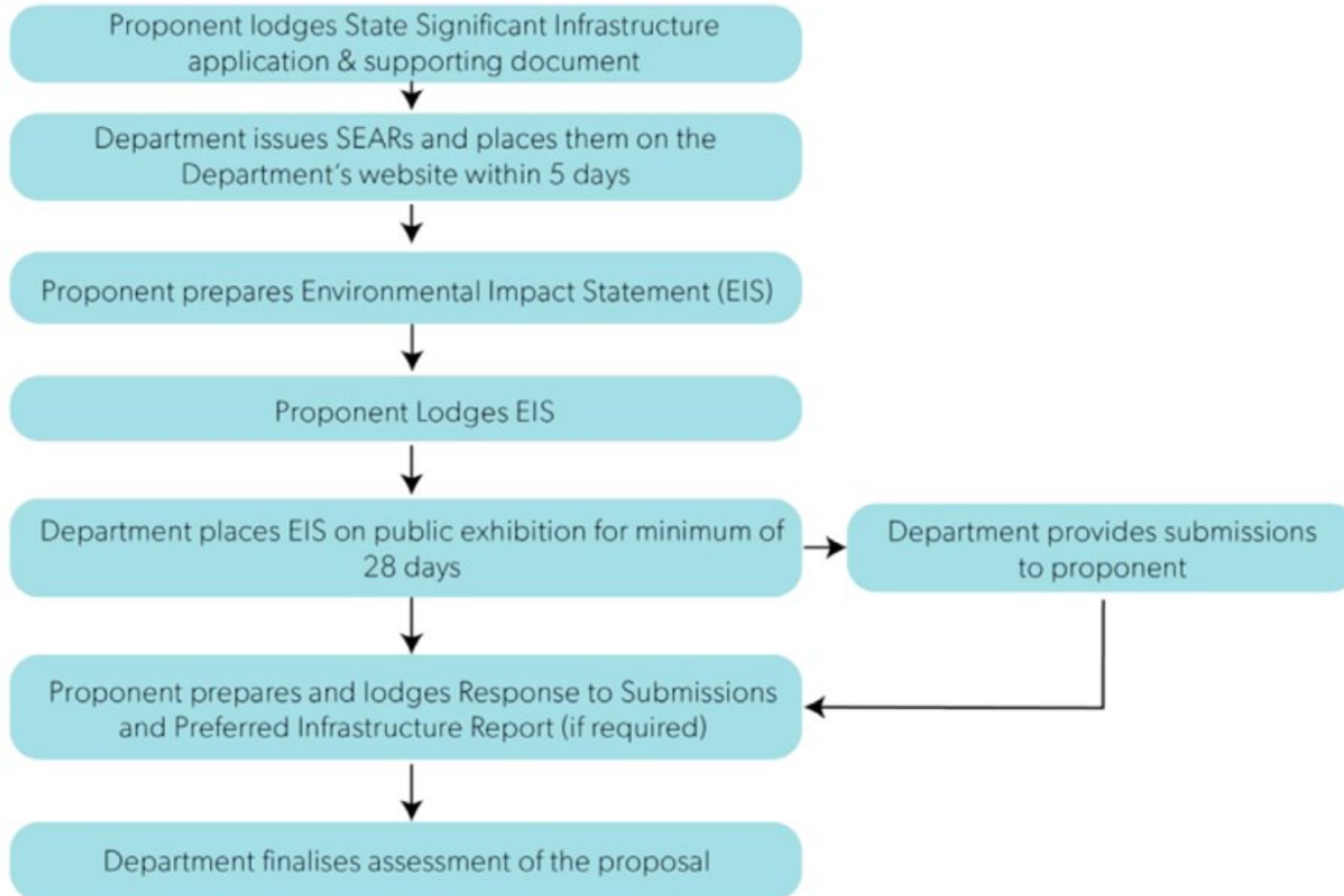
Senior Environment Advisor NSW

EIS APPROVALS PATHWAY



- + An Environmental Impact Statement (EIS) is required for the project.
- + Scoping Report lodged with the NSW Department of Planning, Industry and Environment (DPIE) in 2020.
- + The Secretary's Environmental Assessment Requirements (SEARs) have been issued in response to guide the project's environmental controls.
- + Continuing investigations and gathering information to feed into the EIS.
- + Considerations include environmental and social impacts of the project.

PLANNING APPROVAL PROCESS



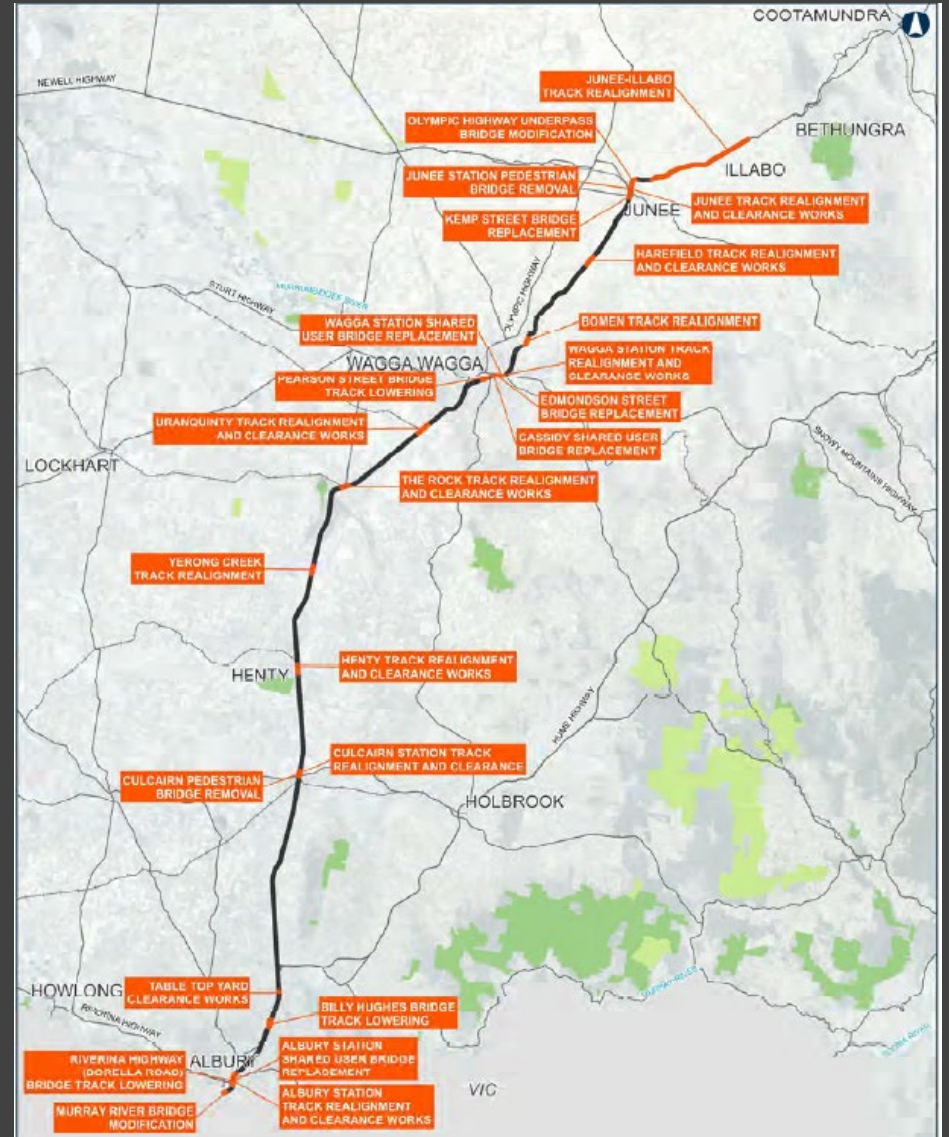
EIS APPROVALS PATHWAY

- + The EIS will be lodged in early 2022.
- + EIS placed on public exhibition for 28 days for community feedback and formal submissions.
- + Minister for Planning and Public Spaces will make a decision on the project's approval.
- + Department of Agriculture, Water and the Environment determined A2I does not require assessment and approval under the *Environment Protection and Biodiversity Conservation Act 1999* (EPBC Act) – non controlled action.



EIS PROJECT DESCRIPTION

- + Reference design and the EIS. What both entail
- + Draft project description:
 - + Modification of bridges, under bridges and culverts.
 - + Replacement of two road bridges and adjustment to intersections
 - + Replacement of share pedestrian and cyclist bridge
 - + Demolition of redundant pedestrian bridges
 - + Adjustment at level crossings



INVESTIGATIONS TO INFORM THE EIS

Investigations	Scheduled
Biodiversity – terrestrial	Sept 20 – Aug 21 (ongoing)
Biodiversity – aquatic	Dec 20 – May 21 (complete)
Groundwater	Feb 21 – May 21 (complete)
Cultural Heritage	Mar 21 (complete)
Noise and Vibration	Mar 21 – Apr 21 (complete)
Traffic and Transport	Jun 21
Landscape and Visual	Apr 21 (complete)
Geotech/ Contamination	Jan 21 – Mar 21 (complete)

INVESTIGATIONS TO INFORM THE EIS

Investigations	Summary
Biodiversity – terrestrial	Patches of remnant native vegetation have been identified. No threatened flora identified. Fauna species of note inc squirrel glider, superb parrot, little eagle.
Biodiversity – aquatic	The results to date of the field survey indicate that potential impacts from the project are considered minor. Further assessment still required.
Cultural Heritage	One site identified – Murray River Bridge (either side of railway) Isolated artefact finds at Yerong Creek and Junee (surface lying quartz flakes)
Historic Heritage	Number of listed items with heritage value
Geotech/ Contamination	Areas of stockpiled ballast and waste material – minor in size, and indicate a historic use of the study area as a railway

CSSI DECLARATION

ARTC applied to the New South Wales Government Department of Planning, Infrastructure and Environment to have Inland Rail considered 'Critical State Significant Infrastructure' (CSSI)

The New South Wales Government considered that application and determined the project as 'Critical State Significant Infrastructure' in addition to its previous recognition as 'State Significant Infrastructure' given the size and complexity of the NSW projects.

This CSSI declaration reflects that Inland Rail is considered essential infrastructure by the state of New South Wales.

The declaration does not change the approval pathway that must be followed, but it does allow for some pre-construction activities to progress with approval.

These include minor utilities work, surveys and investigations, or the storage of materials in existing rail facilities along the alignment.

The pre-construction activities are tightly controlled under the declaration by the New South Wales Government.



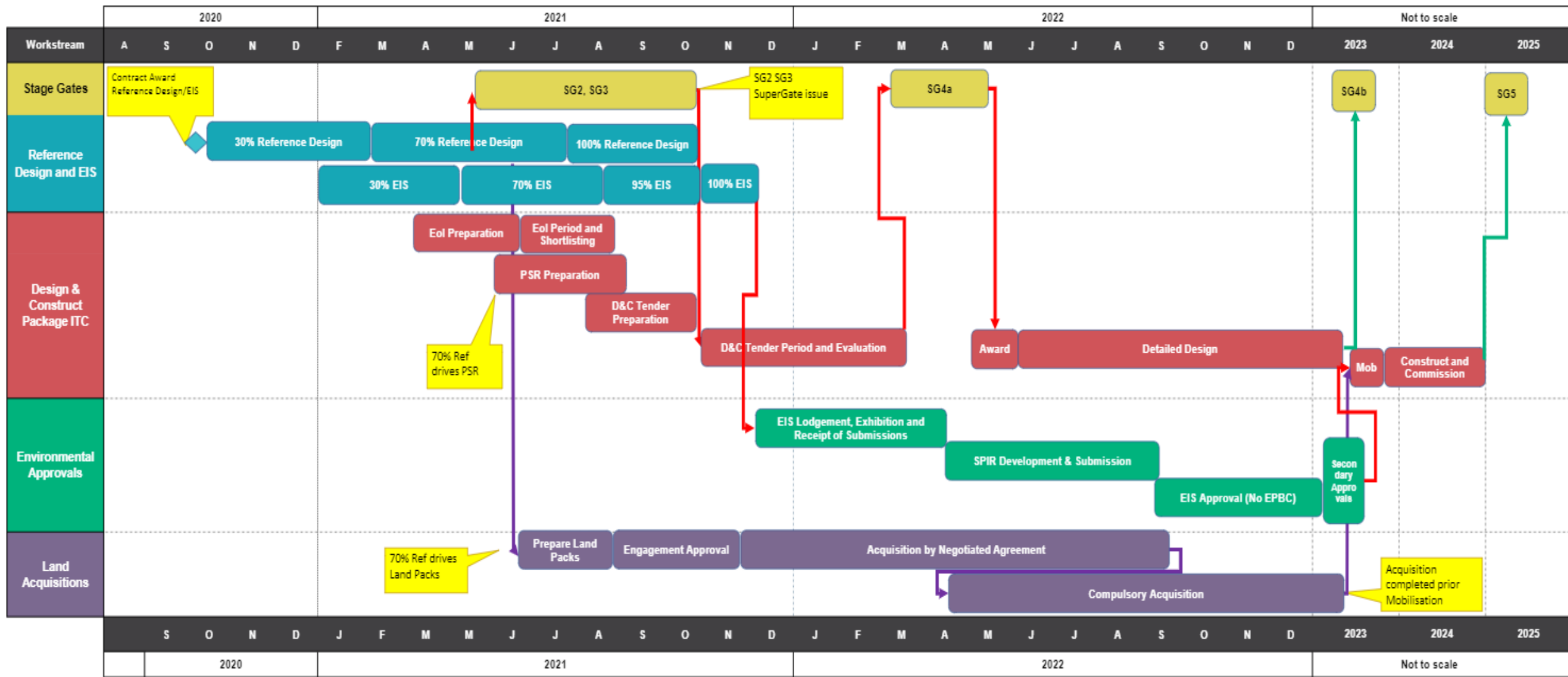
PROCUREMENT
Melvyn Maylin
Project Director

PROCUREMENT

A2I and S2P single contract

- + Construct only Darroobalgie Loop and Wyndham Ave
- + Design and Construct all other items
- + Incentivised Target Cost (ITC) form of Contract
- + Industry briefing 21st June 2021

A2I HIGH LEVEL SCHEDULE



QUESTIONS?

FOR FURTHER INFORMATION

MELVYN MAYLIN

Project Director A2P

Email: mmaylin@artc.com.au

Phone: 0400 266 101

HEATH MARTIN

Stakeholder Engagement Manager

Email: hmartin@artc.com.au

Phone: 0417 832 509

Wayne Window

Senior Environmental Advisor

Email: wwindow@artc.com.au

Phone: 0447 553 401

**INLAND
RAIL** 

ARTC

The Australian Government is delivering Inland Rail through the Australian Rail Track Corporation (ARTC), in partnership with the private sector.

THANK YOU

FOR FURTHER INFORMATION



Website: InlandRail.ARTC.com.au/a2i

Phone: 1800 732 781

Email: InlandRailNSW@artc.com.au

Interactive Map: Maps.InlandRail.com.au/a2i

THANK YOU



The Australian Government is delivering Inland Rail through the Australian Rail Track Corporation (ARTC), in partnership with the private sector.

EDMONDSON STREET BRIDGE REPLACEMENT

