

Prepared for
Australian Rail Track Corporation Ltd
ABN: 75 081 455 754



Environment Report

Appendices

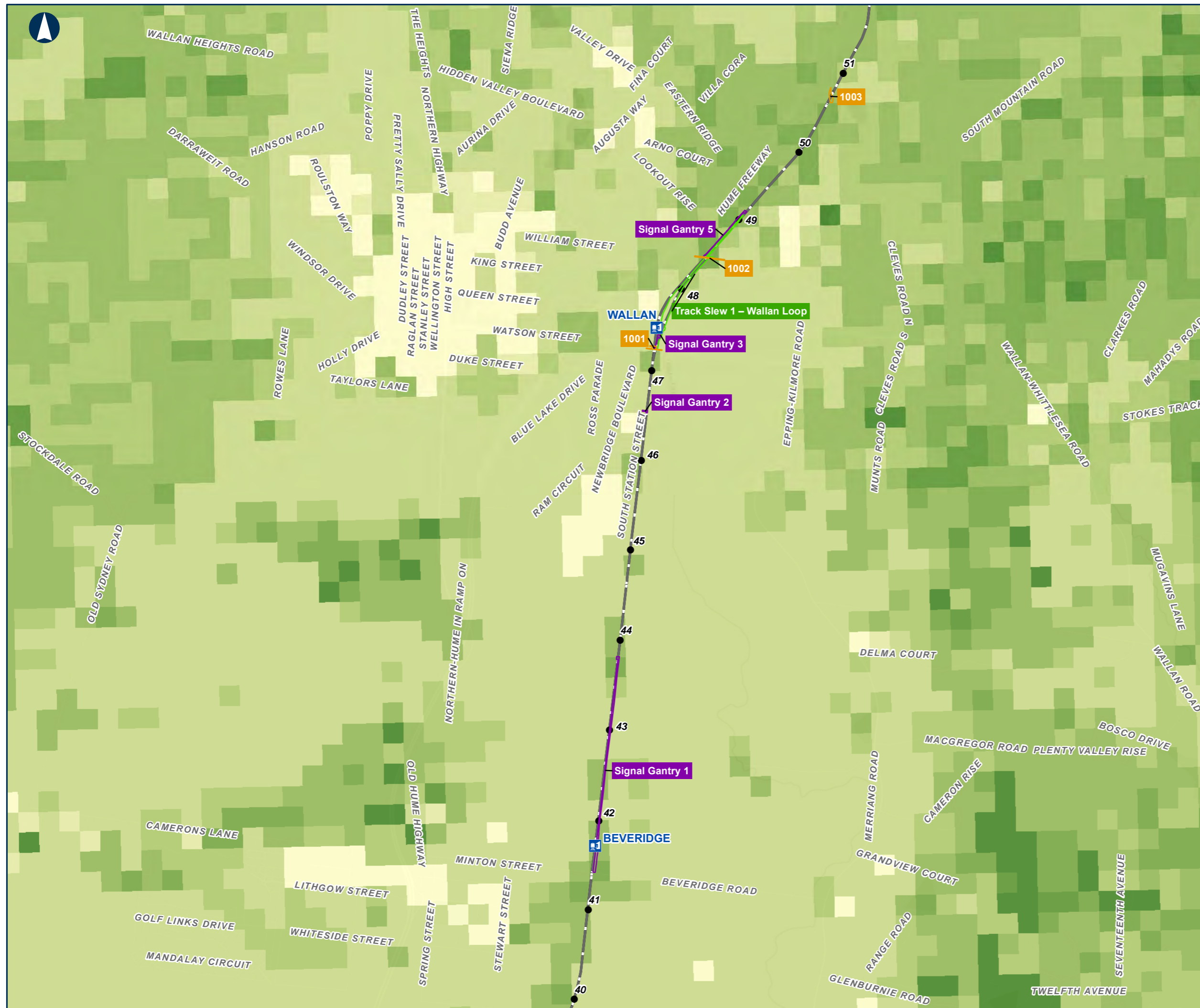
Inland Rail - Beveridge to Albury

Appendix B

Map Books

Appendix B – Figures

Figure 18 Strategic biodiversity value



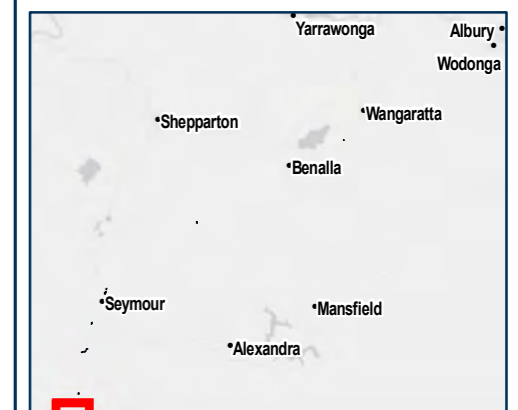
Strategic Biodiversity Value

MAP 1 OF 16

- Overhead Powerline Project Areas
- Track Slew Area
- Signal Gantry Area
- Train Station
- KM Posts
- Railway

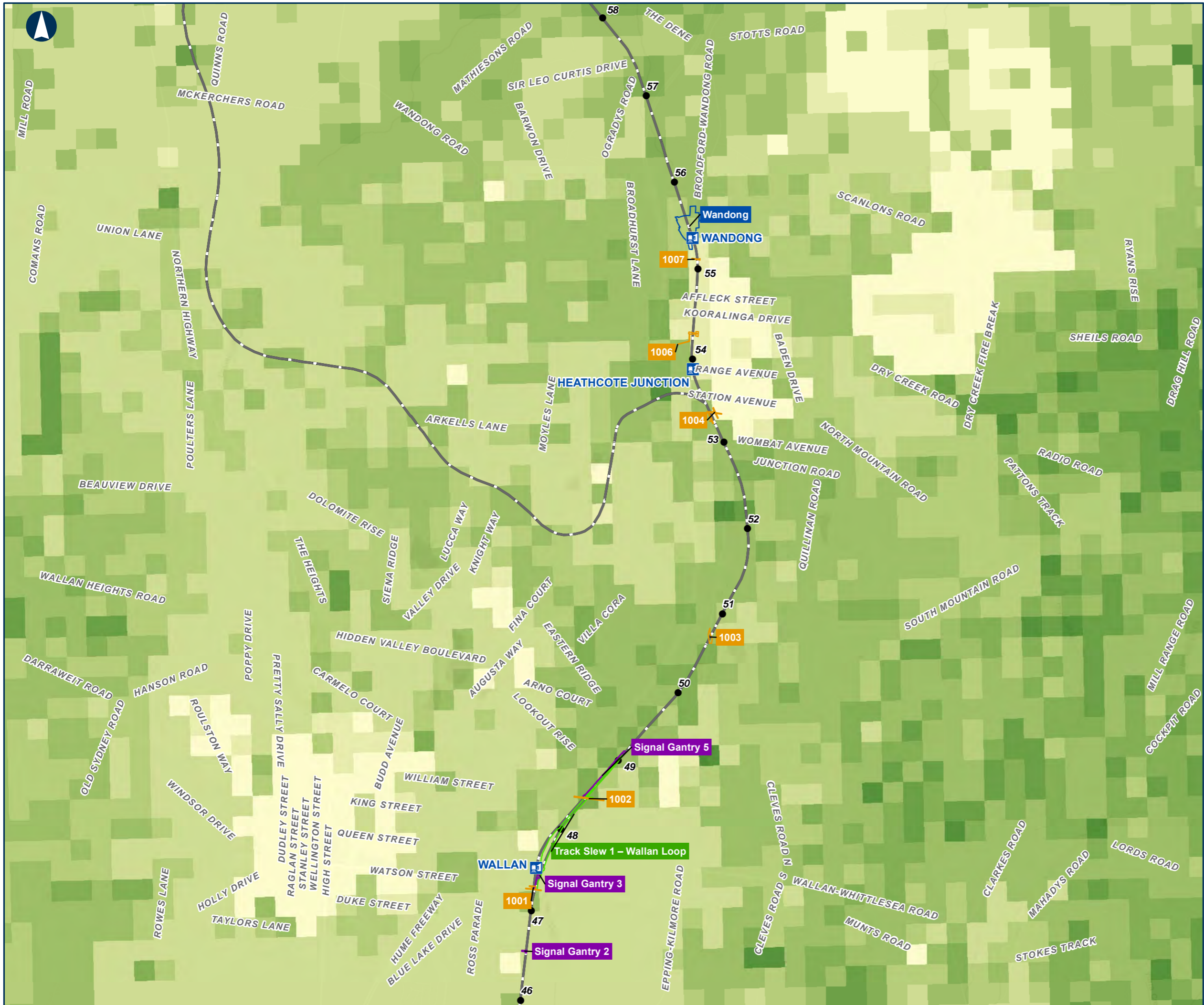
Strategic biodiversity values

- 90 - 100
- 80 - 90
- 65 - 80
- 50 - 65
- 40 - 50
- 25 - 40
- 15 - 25
- 1 - 15



Coordinate System: GDA 1994 MGA Zone 55

ARTC makes no representation or warranty and assumes no duty of care or other responsibility to any party as to the completeness, accuracy or suitability of the information contained in this GIS map. The GIS map has been prepared from material provided to ARTC by an external source and ARTC has not taken any steps to verify the completeness, accuracy or suitability of that material. ARTC will not be responsible for any loss or damage suffered as a result of any person whatsoever placing reliance upon the information contained within this GIS map.



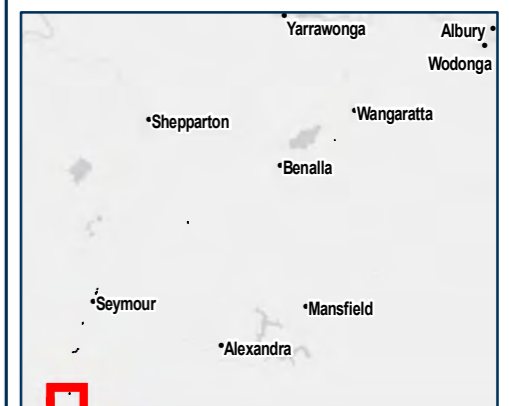
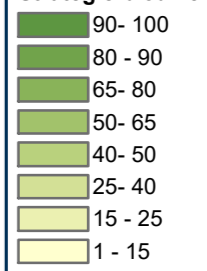
The Australian Government is delivering Inland Rail through the Australian Rail Track Corporation (ARTC), in partnership with the private sector.

Strategic Biodiversity Value

MAP 2 OF 16

- Enhancement Sites
- Overhead Powerline Project Areas
- Track Slew Area
- Signal Gantry Area
- Train Station
- KM Posts
- Railway

Strategic biodiversity values

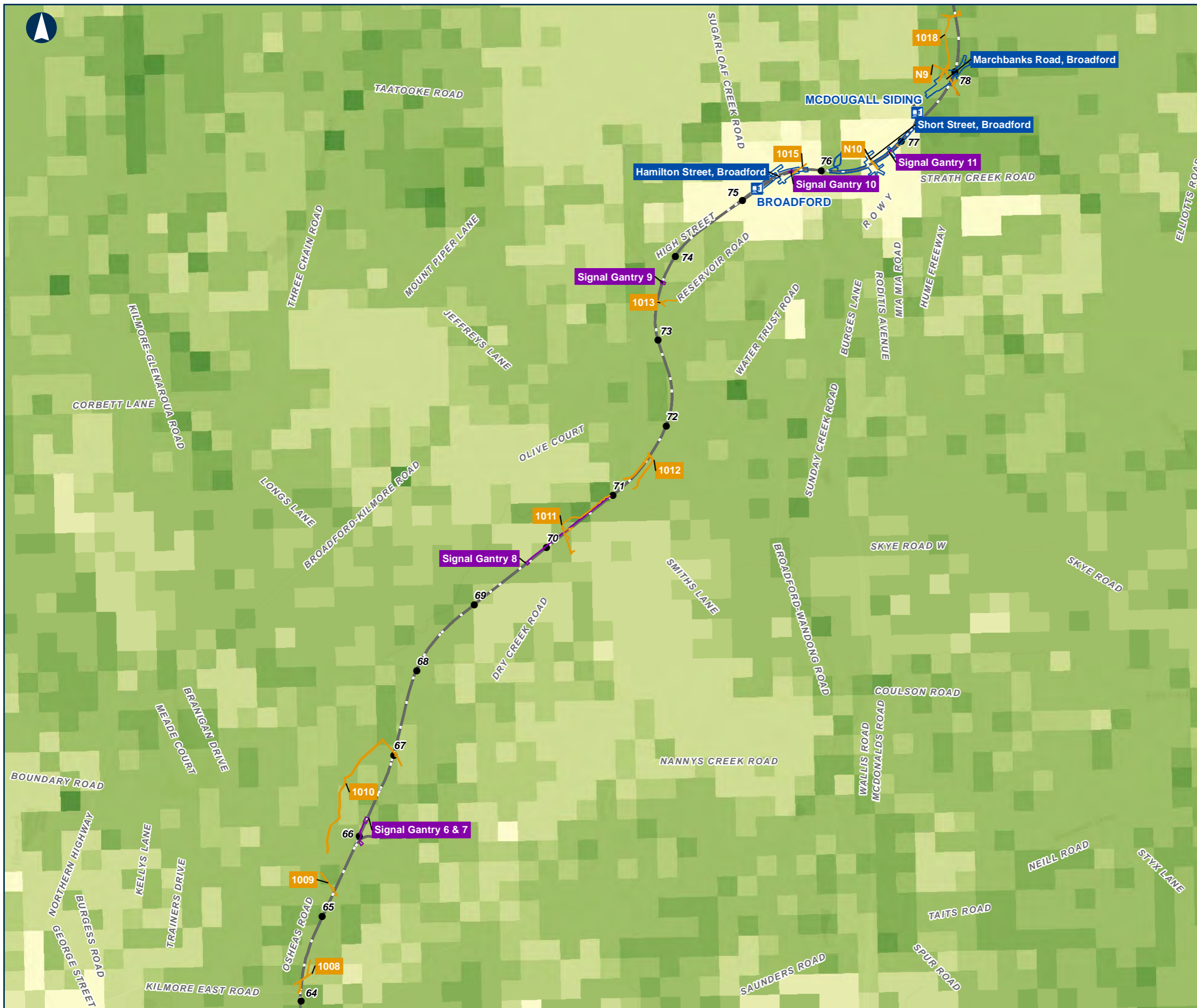


Coordinate System: GDA 1994 MGA Zone 55

ARTC makes no representation or warranty and assumes no duty of care or other responsibility to any party as to the completeness, accuracy or suitability of the information contained in this GIS map. The GIS map has been prepared from material provided to ARTC by an external source and ARTC has not taken any steps to verify the completeness, accuracy or suitability of that material. ARTC will not be responsible for any loss or damage suffered as a result of any person whatsoever placing reliance upon the information contained within this GIS map.

Date: 5/07/2021
 Author: JB
 Data Sources: DELWP (2020)

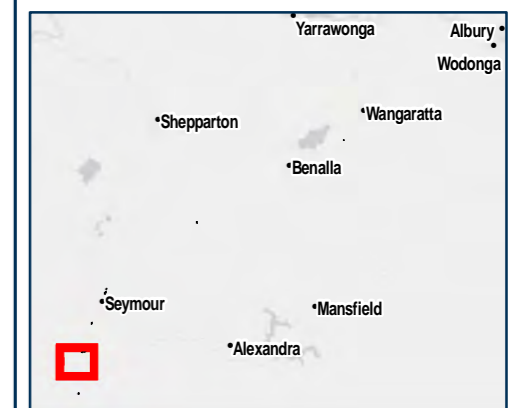
Paper: A3
 Scale: 1:40,000
 Figure 18



Strategic Biodiversity Value

MAP 3 OF 16

- Enhancement Sites
 - Overhead Powerline Project Areas
 - Signal Gantry Area
 - Train Station
 - KM Posts
 - Railway
- Strategic biodiversity values**
- 90- 100
 - 80 - 90
 - 65- 80
 - 50- 65
 - 40- 50
 - 25- 40
 - 15 - 25
 - 1 - 15



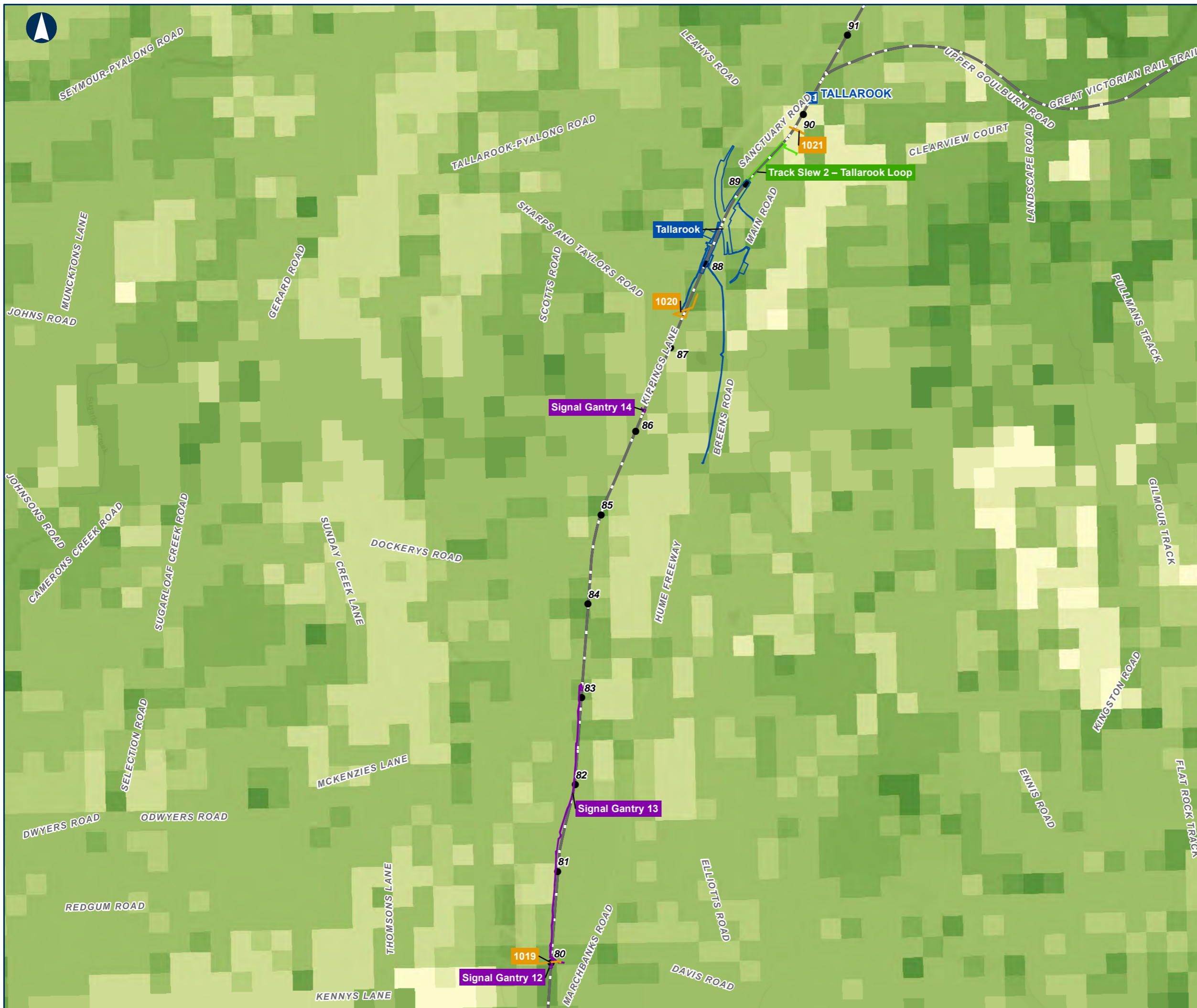
0 925 1,850 Meters

Coordinate System: GDA 1994 MGA Zone 55

ARTC makes no representation or warranty and assumes no duty of care or other responsibility to any party as to the completeness, accuracy or suitability of the information contained in this GIS map. The GIS map has been prepared from material provided to ARTC by an external source and ARTC has not taken any steps to verify the completeness, accuracy or suitability of that material. ARTC will not be responsible for any loss or damage suffered as a result of any person whatsoever placing reliance upon the information contained within this GIS map.

Date: 5/07/2021
 Author: JB
 Data Sources: DELWP (2020)

Paper: A3
 Scale: 1:41,000
 Figure 18



The Australian Government is delivering Inland Rail through the Australian Rail Track Corporation (ARTC), in partnership with the private sector.

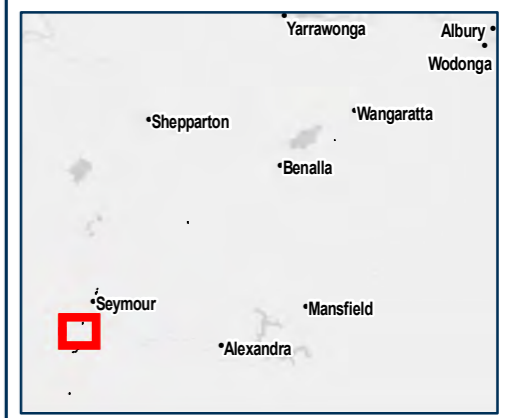
Strategic Biodiversity Value

MAP 4 OF 16

- Enhancement Sites
- Overhead Powerline Project Areas
- Track Slew Area
- Signal Gantry Area
- + Train Station
- KM Posts
- Railway

Strategic biodiversity values

- 90 - 100
- 80 - 90
- 65 - 80
- 50 - 65
- 40 - 50
- 25 - 40
- 15 - 25
- 1 - 15

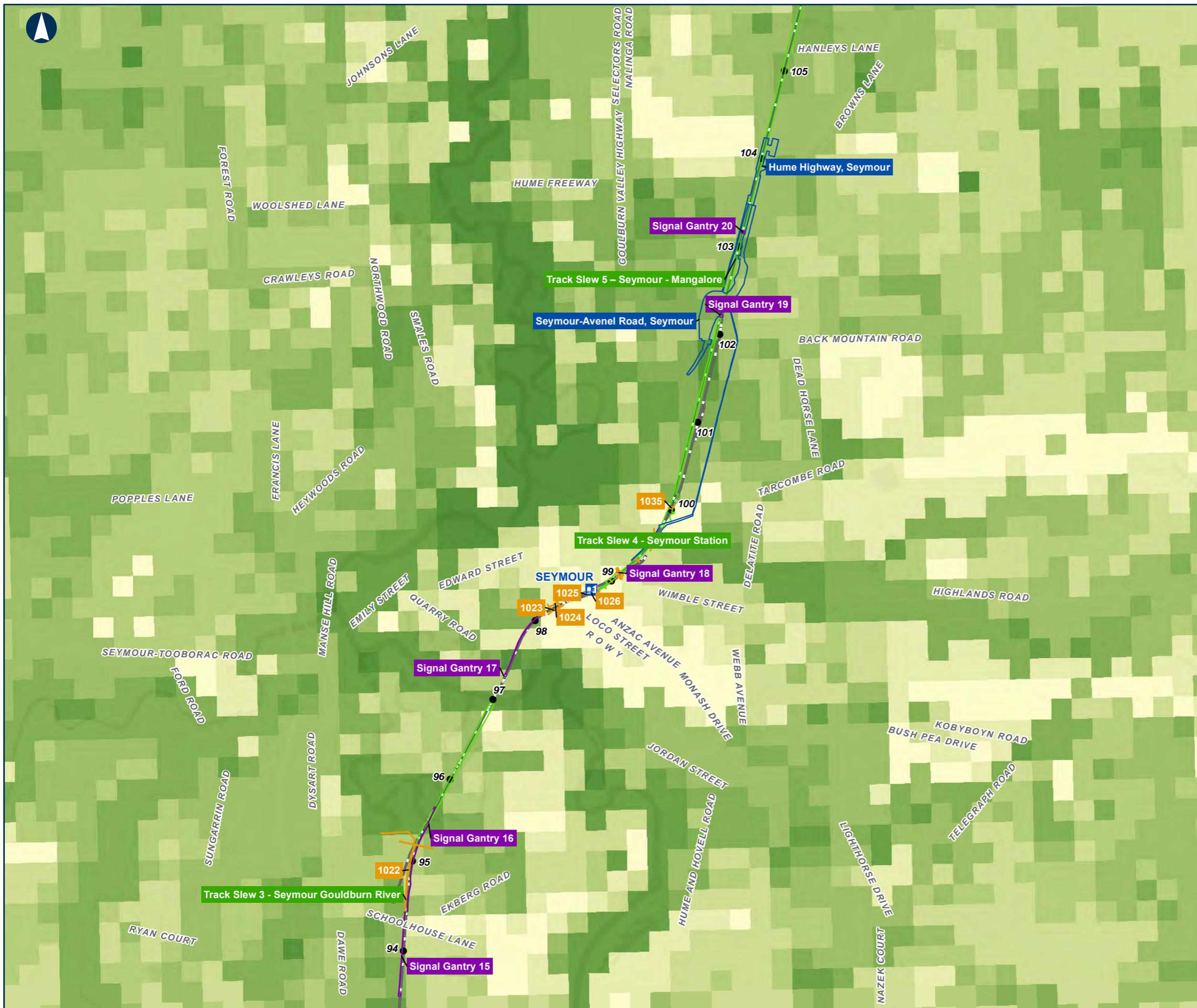


0 910 1,820 Meters

Coordinate System: GDA 1994 MGA Zone 55

ARTC makes no representation or warranty and assumes no duty of care or other responsibility to any party as to the completeness, accuracy or suitability of the information contained in this GIS map. The GIS map has been prepared from material provided to ARTC by an external source and ARTC has not taken any steps to verify the completeness, accuracy or suitability of that material. ARTC will not be responsible for any loss or damage suffered as a result of any person whatsoever placing reliance upon the information contained within this GIS map.

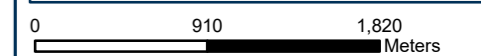
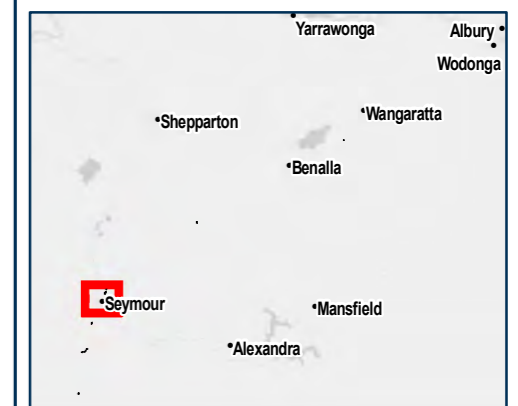
Date: 5/07/2021 Paper: A3
 Author: JB Scale: 1:40,000
 Data Sources: DELWP (2020) Figure 18



Strategic Biodiversity Value

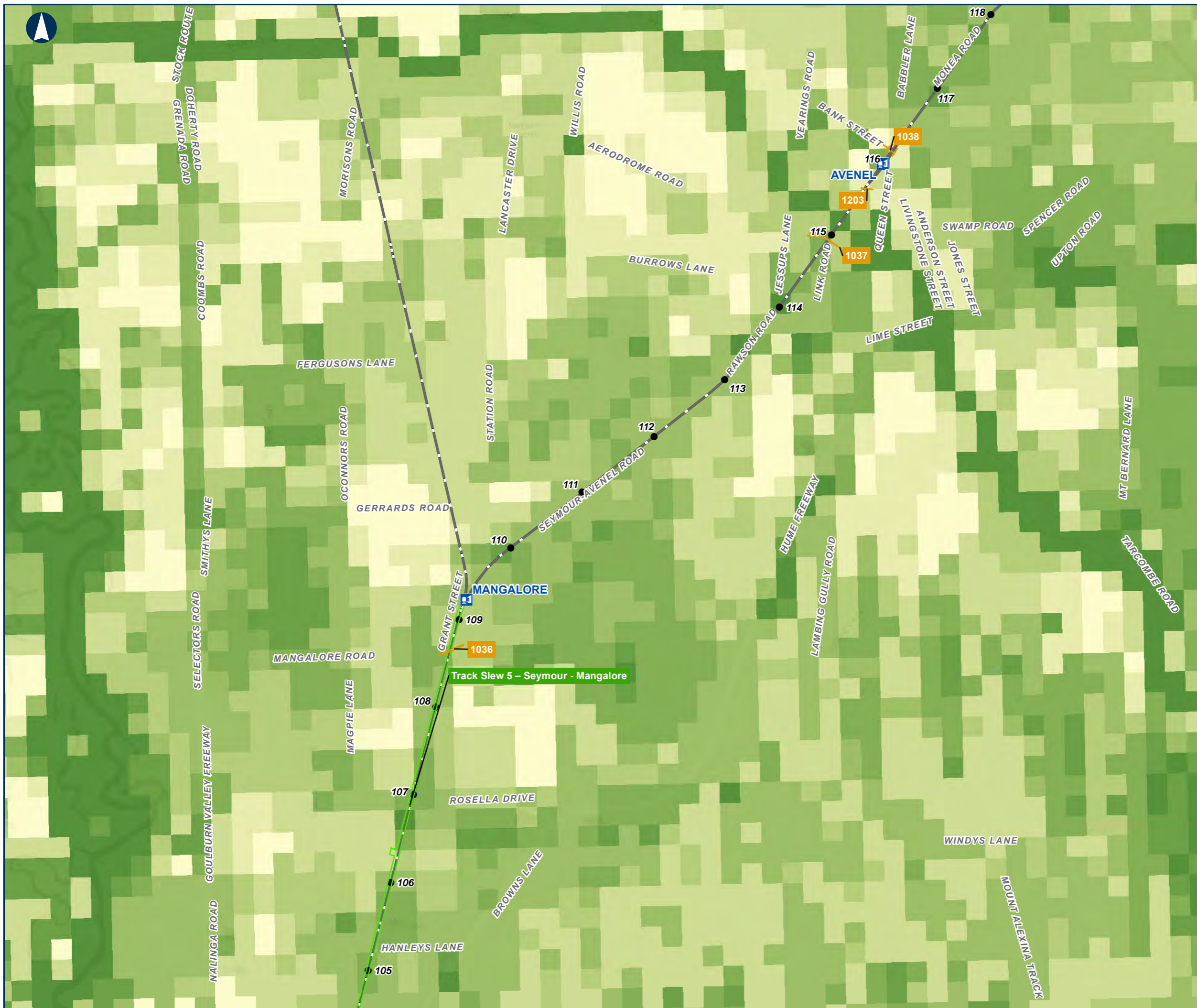
MAP 5 OF 16

- Enhancement Sites
 - Overhead Powerline Project Areas
 - Track Slew Area
 - Signal Gantry Area
 - Train Station
 - KM Posts
 - Railway
- Strategic biodiversity values**
- 90- 100
 - 80 - 90
 - 65- 80
 - 50- 65
 - 40- 50
 - 25- 40
 - 15 - 25
 - 1 - 15



Coordinate System: GDA 1994 MGA Zone 55

ARTC makes no representation or warranty and assumes no duty of care or other responsibility to any party as to the completeness, accuracy or suitability of the information contained in this GIS map. The GIS map has been prepared from material provided to ARTC by an external source and ARTC has not taken any steps to verify the completeness, accuracy or suitability of that material. ARTC will not be responsible for any loss or damage suffered as a result of any person whatsoever placing reliance upon the information contained within this GIS map.

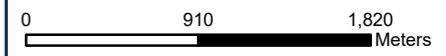
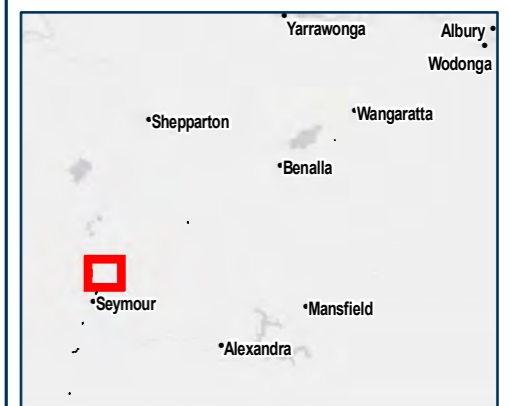


The Australian Government is delivering Inland Rail through the Australian Rail Track Corporation (ARTC), in partnership with the private sector.

Strategic Biodiversity Value

MAP 6 OF 16

- Overhead Powerline Project Areas
 - Track Slew Area
 - + Train Station
 - KM Posts
 - Railway
- Strategic biodiversity values**
- 90- 100
 - 80 - 90
 - 65- 80
 - 50- 65
 - 40- 50
 - 25- 40
 - 15 - 25
 - 1 - 15



Coordinate System: GDA 1994 MGA Zone 55

ARTC makes no representation or warranty and assumes no duty of care or other responsibility to any party as to the completeness, accuracy or suitability of the information contained in this GIS map. The GIS map has been prepared from material provided to ARTC by an external source and ARTC has not taken any steps to verify the completeness, accuracy or suitability of that material. ARTC will not be responsible for any loss or damage suffered as a result of any person whatsoever placing reliance upon the information contained within this GIS map.

Date: 5/07/2021
 Author: JB
 Data Sources: DELWP (2020)

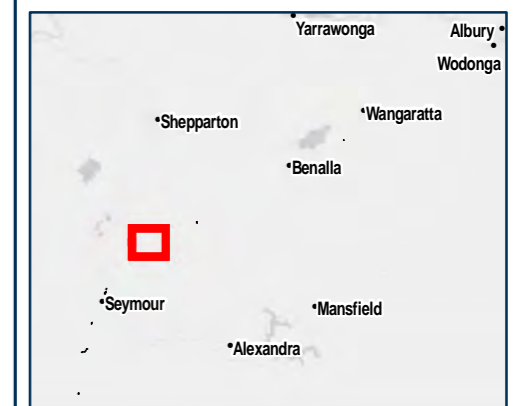
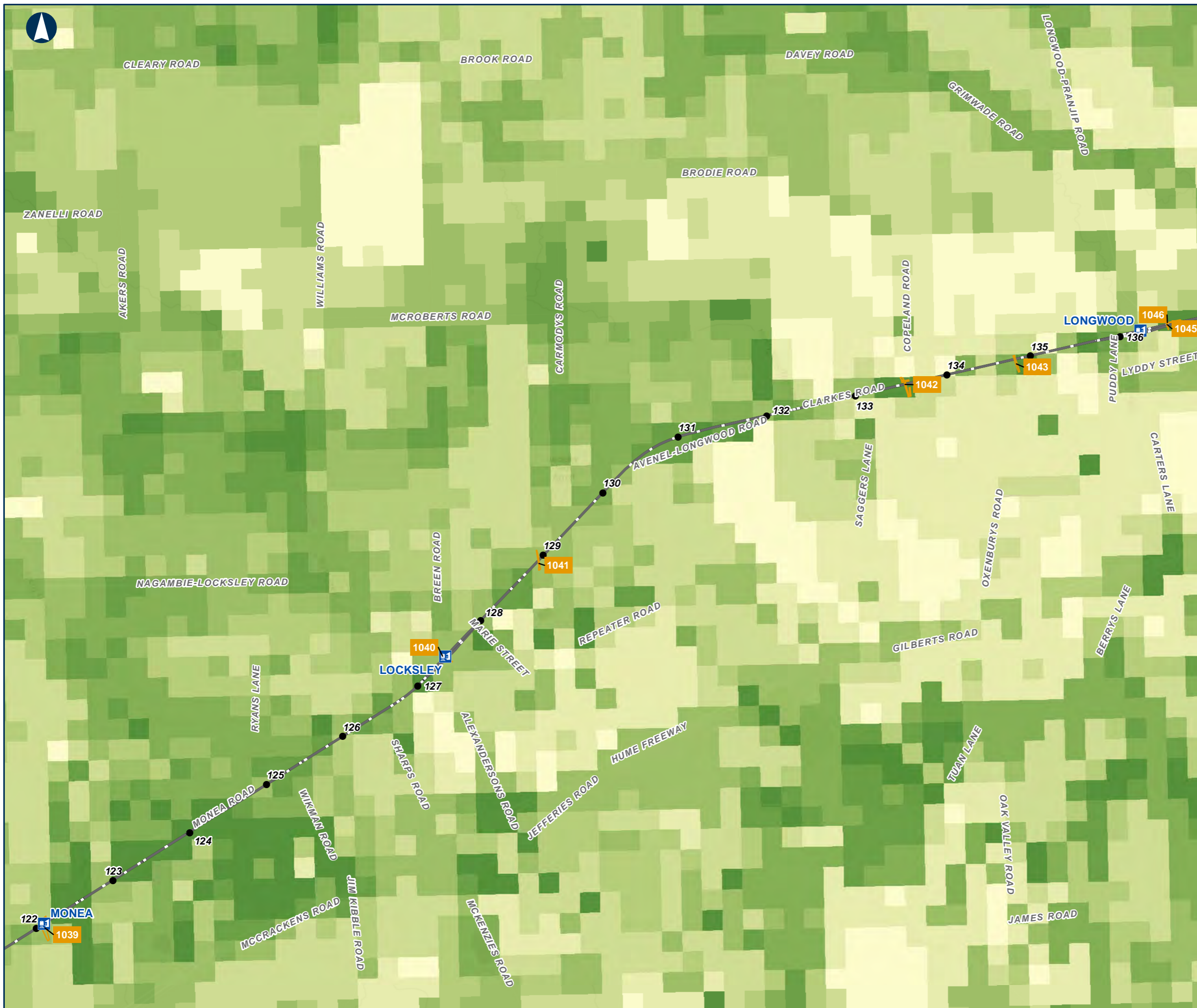
Paper: A3
 Scale: 1:40,000
 Figure 18



Strategic Biodiversity Value

MAP 7 OF 16

- Overhead Powerline Project Areas
 - Train Station
 - KM Posts
 - Railway
- Strategic biodiversity values**
- 90 - 100
 - 80 - 90
 - 65 - 80
 - 50 - 65
 - 40 - 50
 - 25 - 40
 - 15 - 25
 - 1 - 15

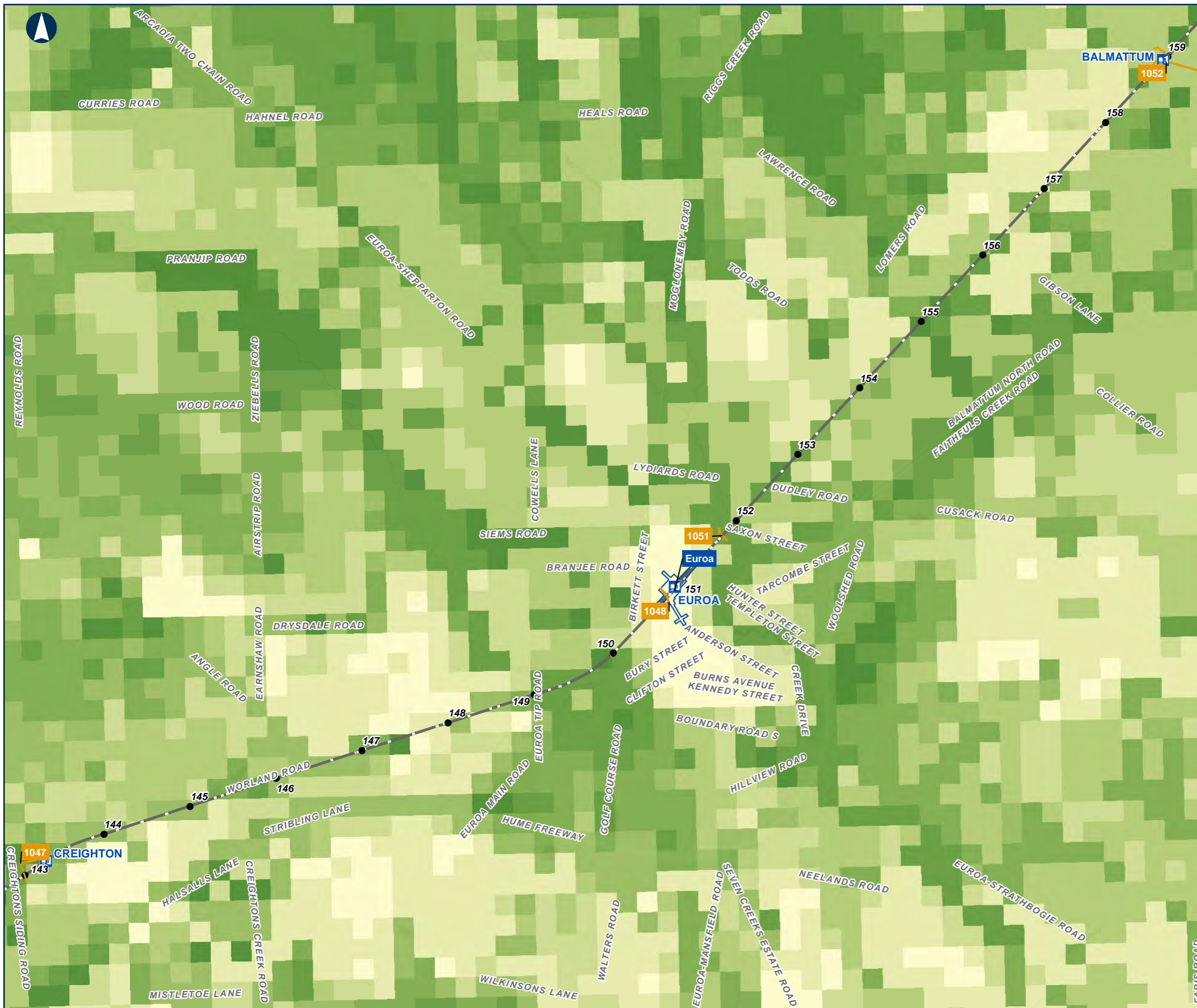


0 910 1,820 Meters

Coordinate System: GDA 1994 MGA Zone 55

ARTC makes no representation or warranty and assumes no duty of care or other responsibility to any party as to the completeness, accuracy or suitability of the information contained in this GIS map. The GIS map has been prepared from material provided to ARTC by an external source and ARTC has not taken any steps to verify the completeness, accuracy or suitability of that material. ARTC will not be responsible for any loss or damage suffered as a result of any person whatsoever placing reliance upon the information contained within this GIS map.

Date: 5/07/2021 Paper: A3
 Author: JB Scale: 1:40,000
 Data Sources: DELWP (2020) Figure 18

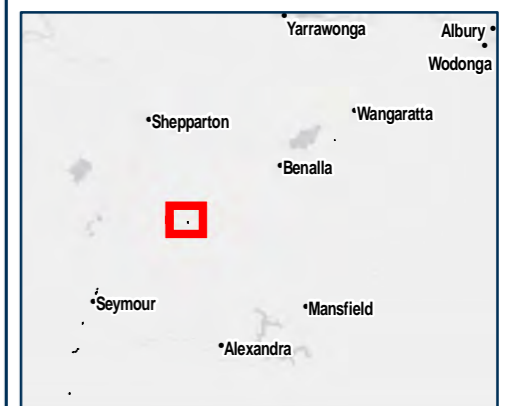


The Australian Government is delivering Inland Rail through the Australian Rail Track Corporation (ARTC), in partnership with the private sector.

Strategic Biodiversity Value

MAP 8 OF 16

- Enhancement Sites
 - Overhead Powerline Project Areas
 - Train Station
 - KM Posts
 - Railway
- Strategic biodiversity values**
- 90- 100
 - 80 - 90
 - 65- 80
 - 50- 65
 - 40- 50
 - 25- 40
 - 15 - 25
 - 1 - 15

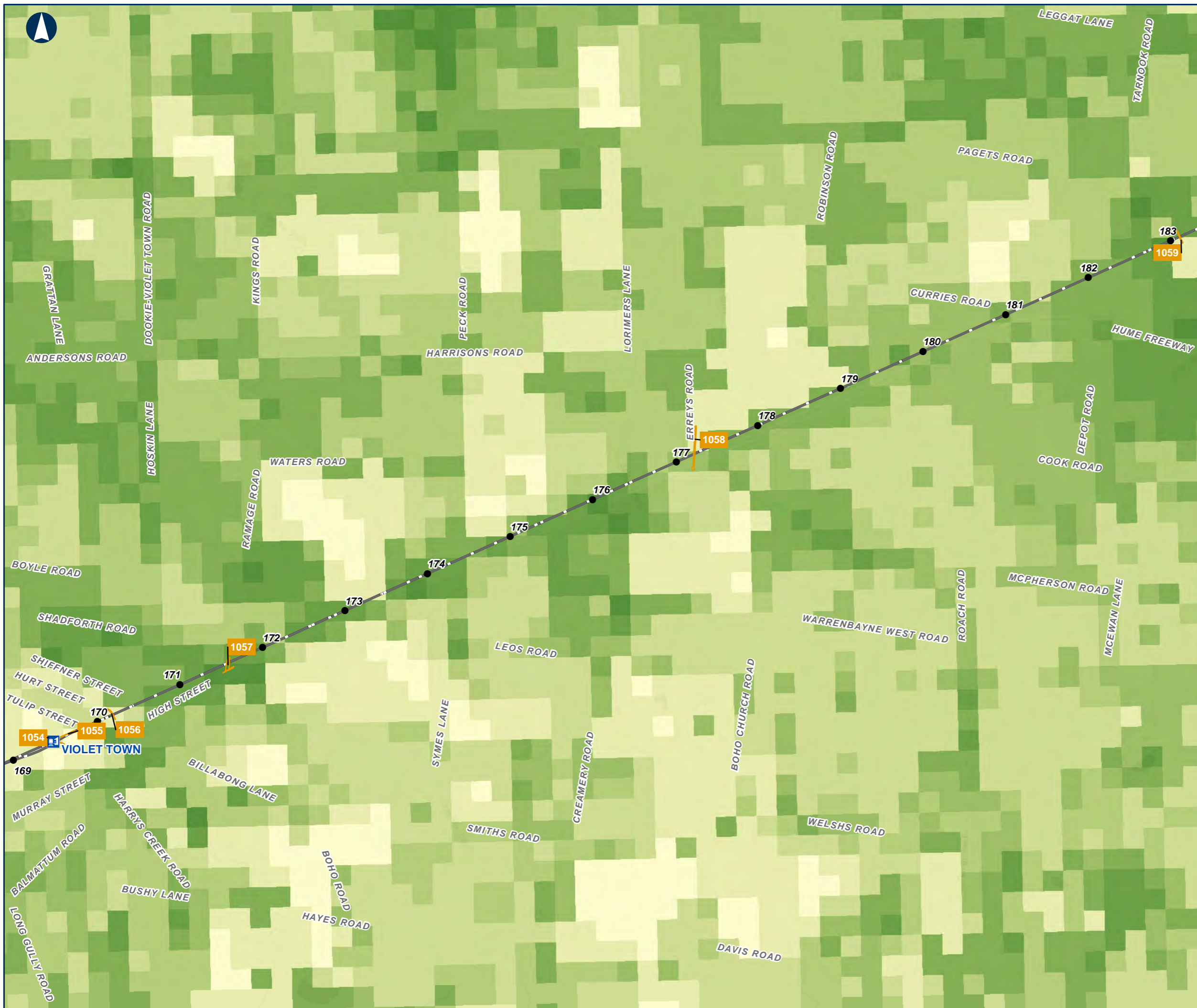


Coordinate System: GDA 1994 MGA Zone 55

ARTC makes no representation or warranty and assumes no duty of care or other responsibility to any party as to the completeness, accuracy or suitability of the information contained in this GIS map. The GIS map has been prepared from material provided to ARTC by an external source and ARTC has not taken any steps to verify the completeness, accuracy or suitability of that material. ARTC will not be responsible for any loss or damage suffered as a result of any person whatsoever placing reliance upon the information contained within this GIS map.

Date: 5/07/2021
 Author: JB
 Data Sources: DELWP (2020)

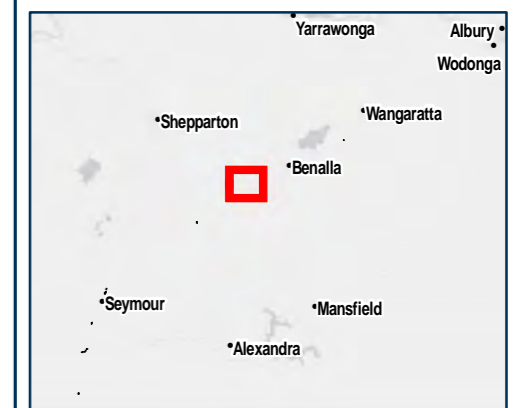
Paper: A3
 Scale: 1:40,000
 Figure 18



Strategic Biodiversity Value

MAP 9 OF 16

- Overhead Powerline Project Areas
 - Train Station
 - KM Posts
 - Railway
- Strategic biodiversity values**
- 90 - 100
 - 80 - 90
 - 65 - 80
 - 50 - 65
 - 40 - 50
 - 25 - 40
 - 15 - 25
 - 1 - 15



0 910 1,820 Meters

Coordinate System: GDA 1994 MGA Zone 55

ARTC makes no representation or warranty and assumes no duty of care or other responsibility to any party as to the completeness, accuracy or suitability of the information contained in this GIS map. The GIS map has been prepared from material provided to ARTC by an external source and ARTC has not taken any steps to verify the completeness, accuracy or suitability of that material. ARTC will not be responsible for any loss or damage suffered as a result of any person whatsoever placing reliance upon the information contained within this GIS map.

Date: 5/07/2021 Paper: A3
 Author: JB Scale: 1:40,000
 Data Sources: DELWP (2020) Figure 18



WEBB ROAD

The Australian Government is delivering Inland Rail through the Australian Rail Track Corporation (ARTC), in partnership with the private sector.

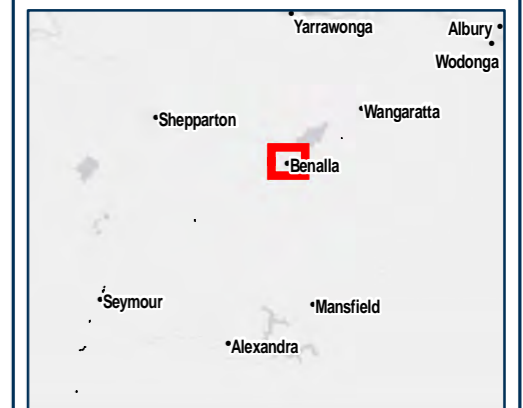
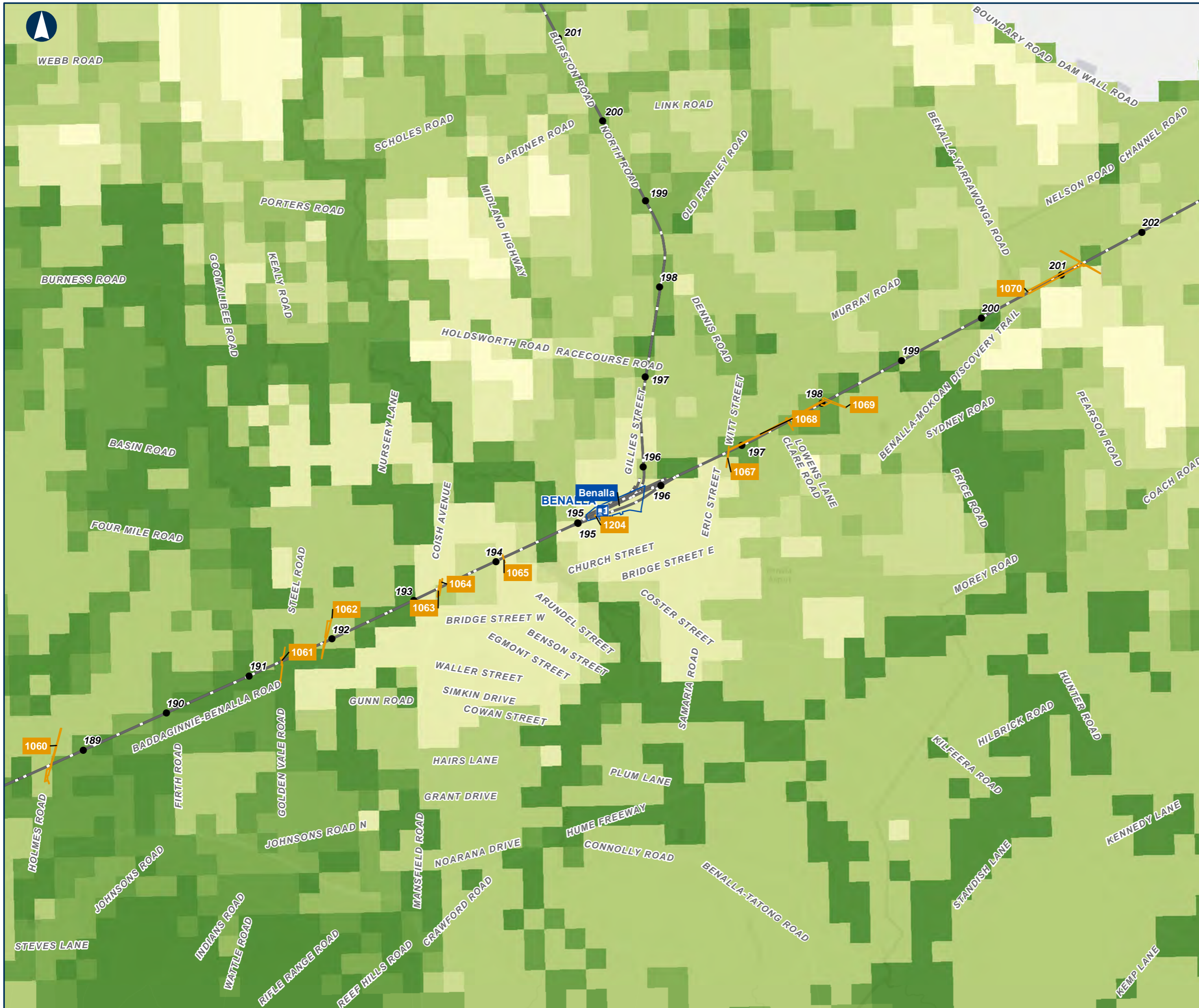
Strategic Biodiversity Value

MAP 10 OF 16

- Enhancement Sites
- Overhead Powerline Project Areas
- Train Station
- KM Posts
- Railway

Strategic biodiversity values

- 90-100
- 80-90
- 65-80
- 50-65
- 40-50
- 25-40
- 15-25
- 1-15



0 910 1,820 Meters

Coordinate System: GDA 1994 MGA Zone 55

ARTC makes no representation or warranty and assumes no duty of care or other responsibility to any party as to the completeness, accuracy or suitability of the information contained in this GIS map. The GIS map has been prepared from material provided to ARTC by an external source and ARTC has not taken any steps to verify the completeness, accuracy or suitability of that material. ARTC will not be responsible for any loss or damage suffered as a result of any person whatsoever placing reliance upon the information contained within this GIS map.

Date: 5/07/2021
Author: JB
Data Sources: DELWP (2020)

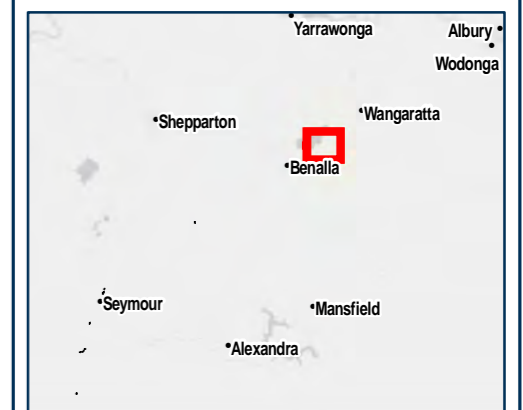
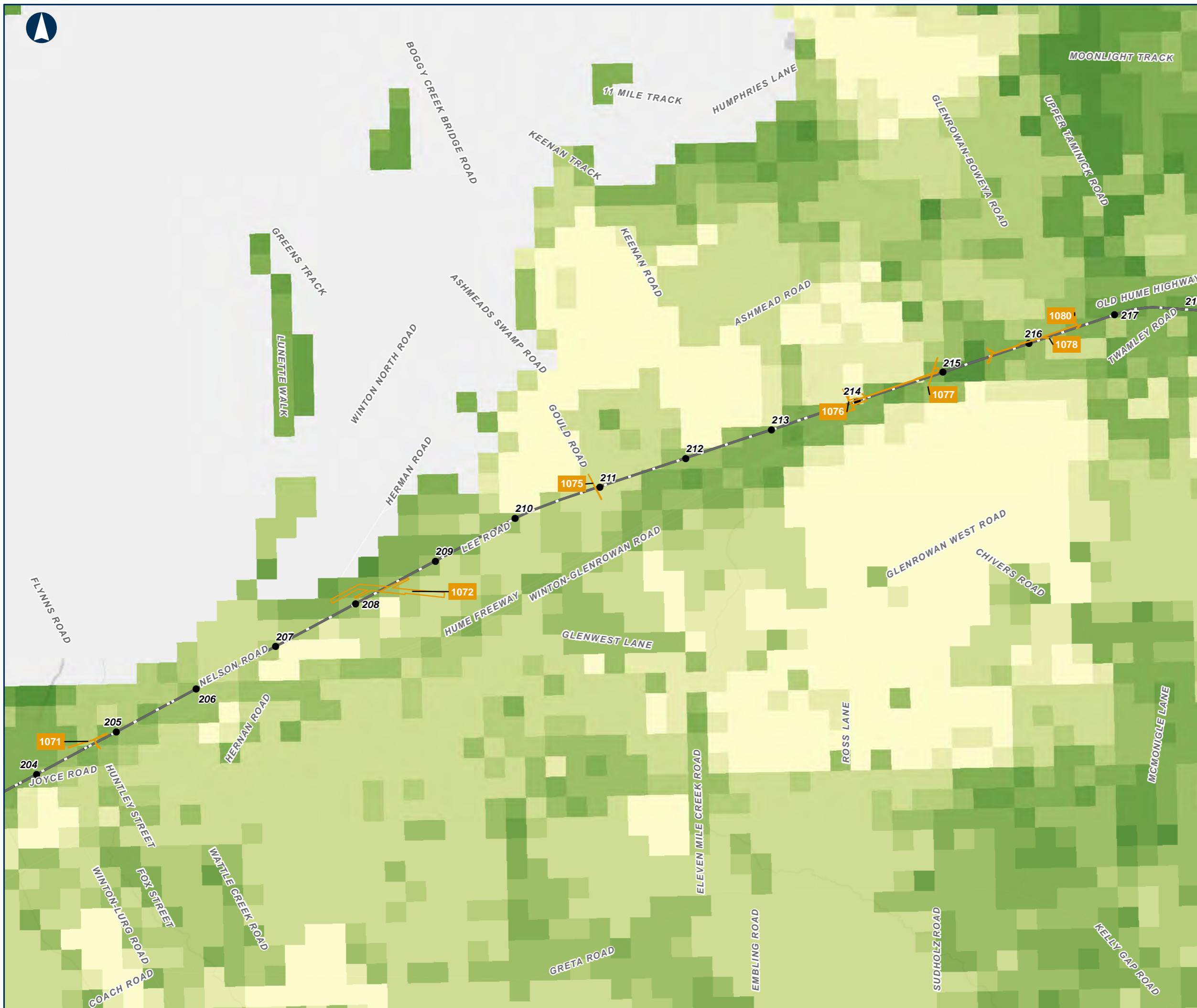
Paper: A3
Scale: 1:40,000
Figure 18



Strategic Biodiversity Value

MAP 11 OF 16

- Overhead Powerline Project Areas
 - KM Posts
 - Railway
- Strategic biodiversity values**
- 90- 100
 - 80 - 90
 - 65- 80
 - 50- 65
 - 40- 50
 - 25- 40
 - 15 - 25
 - 1 - 15

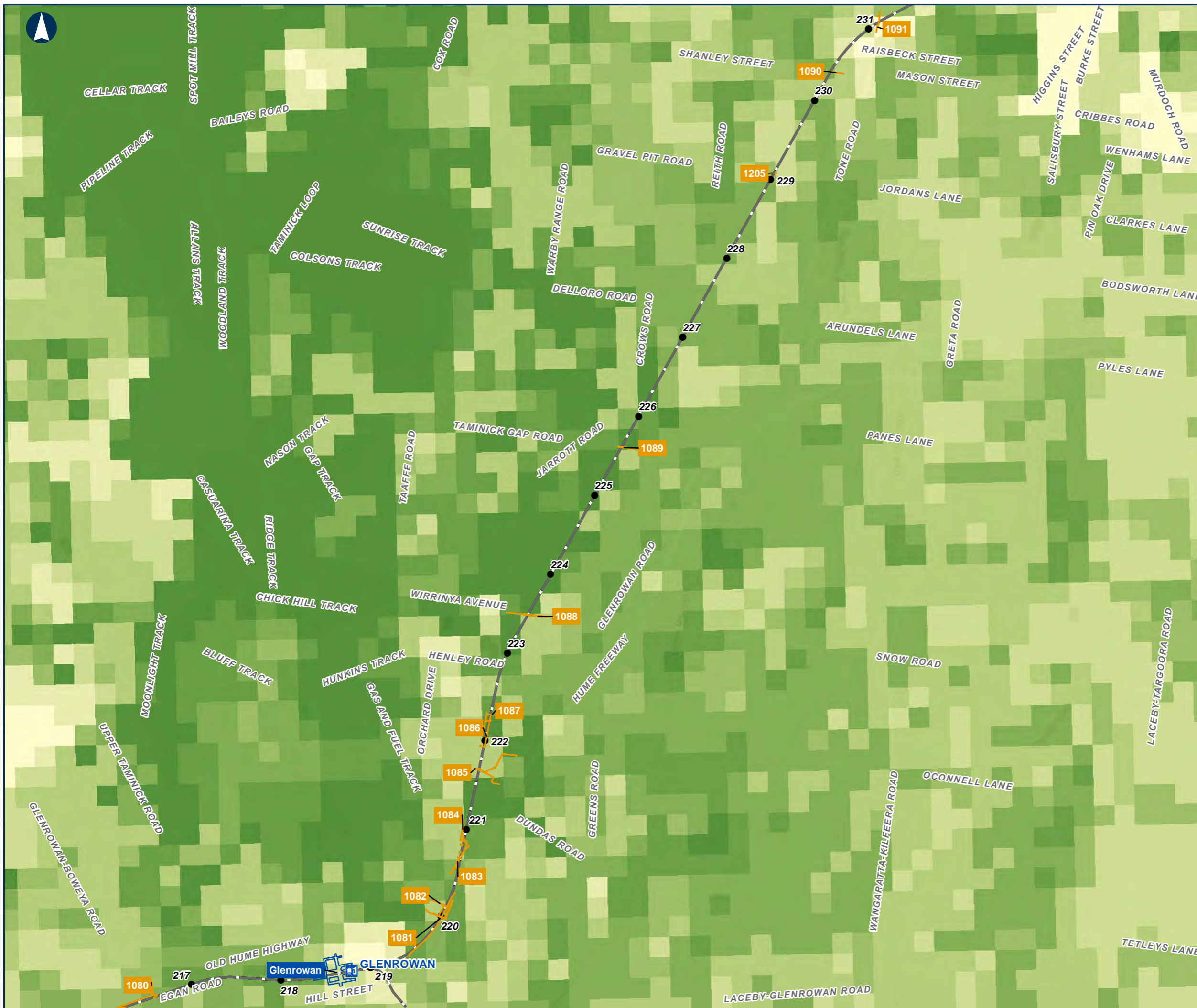


0 910 1,820 Meters

Coordinate System: GDA 1994 MGA Zone 55

ARTC makes no representation or warranty and assumes no duty of care or other responsibility to any party as to the completeness, accuracy or suitability of the information contained in this GIS map. The GIS map has been prepared from material provided to ARTC by an external source and ARTC has not taken any steps to verify the completeness, accuracy or suitability of that material. ARTC will not be responsible for any loss or damage suffered as a result of any person whatsoever placing reliance upon the information contained within this GIS map.

Date: 5/07/2021 Paper: A3
 Author: JB Scale: 1:40,000
 Data Sources: DELWP (2020) Figure 18

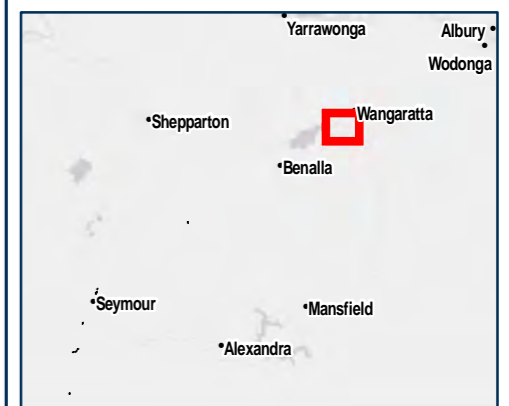


The Australian Government is delivering Inland Rail through the Australian Rail Track Corporation (ARTC), in partnership with the private sector.

Strategic Biodiversity Value

MAP 12 OF 16

- Enhancement Sites
 - Overhead Powerline Project Areas
 - Train Station
 - KM Posts
 - Railway
- Strategic biodiversity values**
- 90 - 100
 - 80 - 90
 - 65 - 80
 - 50 - 65
 - 40 - 50
 - 25 - 40
 - 15 - 25
 - 1 - 15

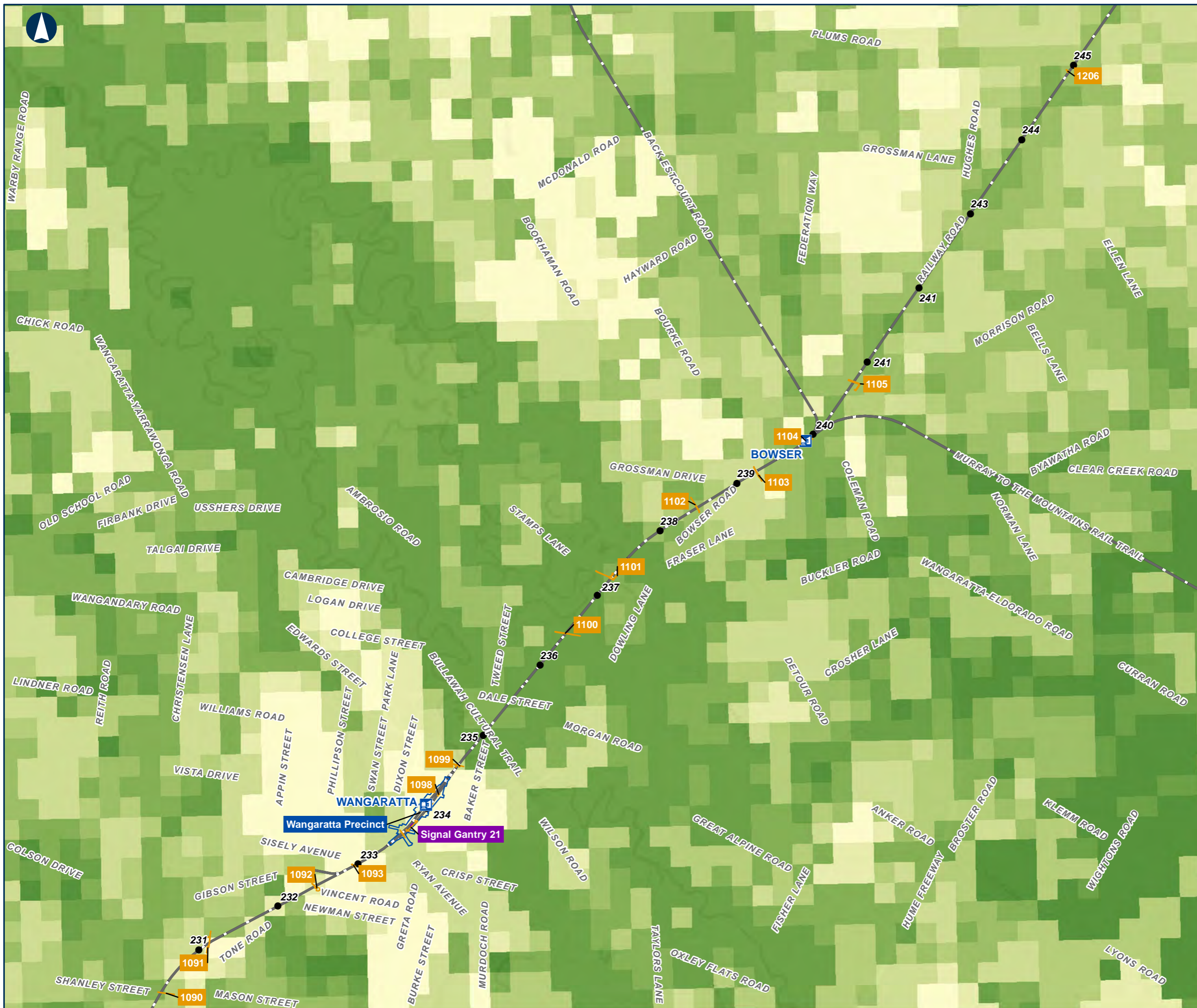


Coordinate System: GDA 1994 MGA Zone 55

ARTC makes no representation or warranty and assumes no duty of care or other responsibility to any party as to the completeness, accuracy or suitability of the information contained in this GIS map. The GIS map has been prepared from material provided to ARTC by an external source and ARTC has not taken any steps to verify the completeness, accuracy or suitability of that material. ARTC will not be responsible for any loss or damage suffered as a result of any person whatsoever placing reliance upon the information contained within this GIS map.

Date: 5/07/2021
 Author: JB
 Data Sources: DELWP (2020)

Paper: A3
 Scale: 1:40,000
 Figure 18



The Australian Government is delivering Inland Rail through the Australian Rail Track Corporation (ARTC), in partnership with the private sector.

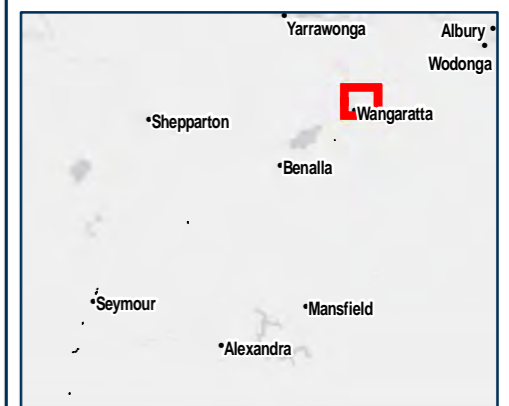
Strategic Biodiversity Value

MAP 13 OF 16

- Enhancement Sites
- Overhead Powerline Project Areas
- Signal Gantry Area
- + Train Station
- KM Posts
- Railway

Strategic biodiversity values

	90 - 100
	80 - 90
	65 - 80
	50 - 65
	40 - 50
	25 - 40
	15 - 25
	1 - 15

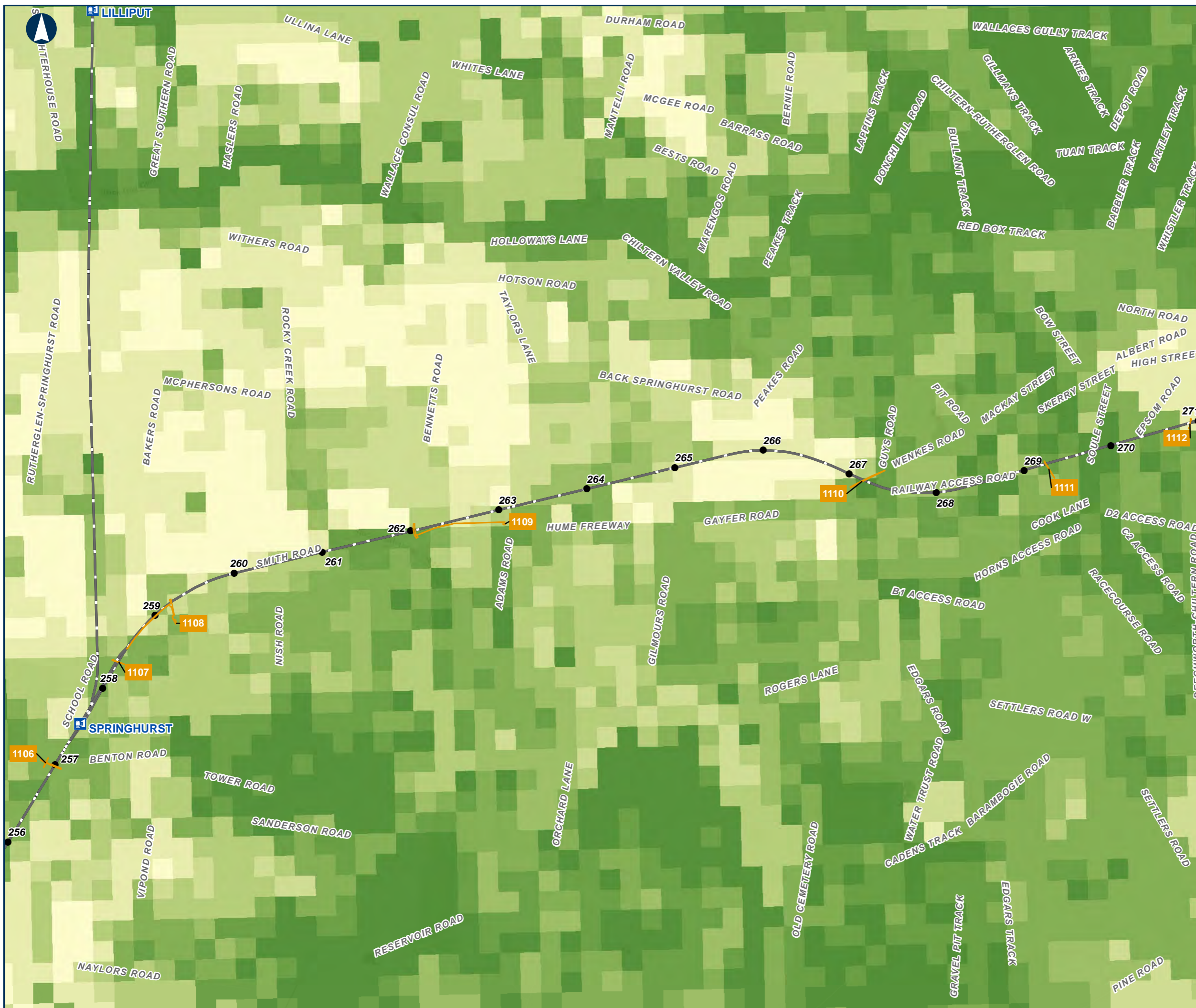


0 910 1,820 Meters

Coordinate System: GDA 1994 MGA Zone 55

ARTC makes no representation or warranty and assumes no duty of care or other responsibility to any party as to the completeness, accuracy or suitability of the information contained in this GIS map. The GIS map has been prepared from material provided to ARTC by an external source and ARTC has not taken any steps to verify the completeness, accuracy or suitability of that material. ARTC will not be responsible for any loss or damage suffered as a result of any person whatsoever placing reliance upon the information contained within this GIS map.

Date: 5/07/2021 Paper: A3
 Author: JB Scale: 1:40,000
 Data Sources: DELWP (2020) Figure 18

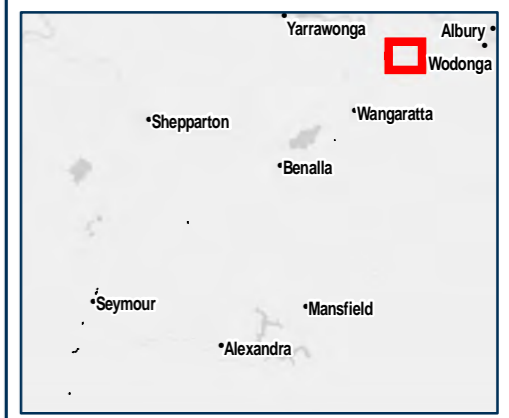


The Australian Government is delivering Inland Rail through the Australian Rail Track Corporation (ARTC), in partnership with the private sector.

Strategic Biodiversity Value

MAP 14 OF 16

- Overhead Powerline Project Areas
 - Train Station
 - KM Posts
 - Railway
- Strategic biodiversity values**
- 90 - 100
 - 80 - 90
 - 65 - 80
 - 50 - 65
 - 40 - 50
 - 25 - 40
 - 15 - 25
 - 1 - 15

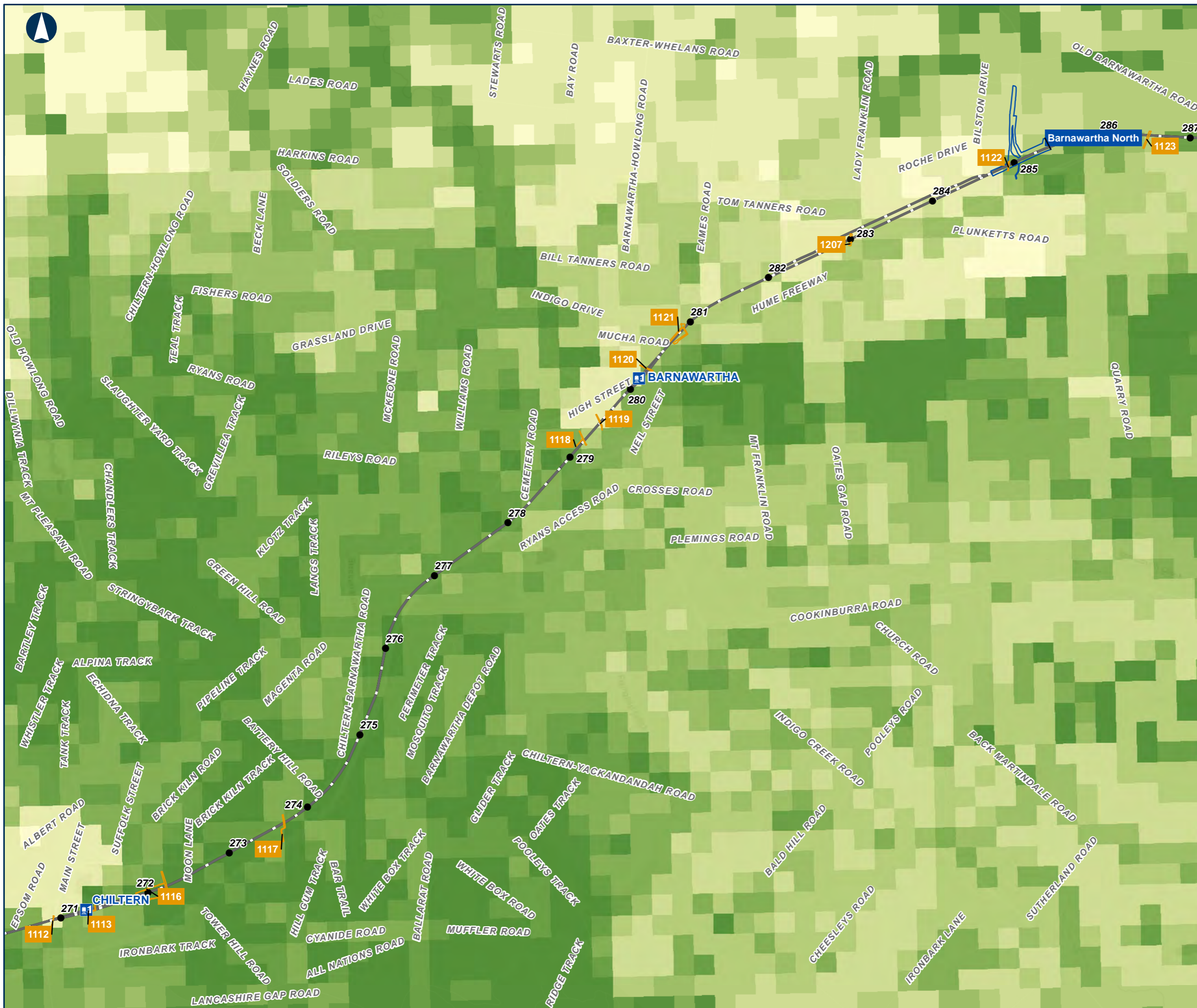


Coordinate System: GDA 1994 MGA Zone 55

ARTC makes no representation or warranty and assumes no duty of care or other responsibility to any party as to the completeness, accuracy or suitability of the information contained in this GIS map. The GIS map has been prepared from material provided to ARTC by an external source and ARTC has not taken any steps to verify the completeness, accuracy or suitability of that material. ARTC will not be responsible for any loss or damage suffered as a result of any person whatsoever placing reliance upon the information contained within this GIS map.

Date: 5/07/2021
 Author: JB
 Data Sources: DELWP (2020)

Paper: A3
 Scale: 1:40,000
 Figure 18



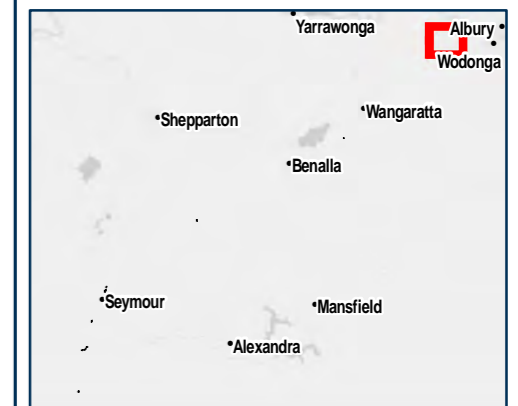
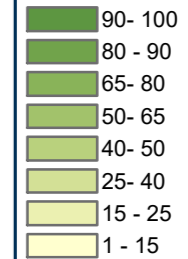
The Australian Government is delivering Inland Rail through the Australian Rail Track Corporation (ARTC), in partnership with the private sector.

Strategic Biodiversity Value

MAP 15 OF 16

- Enhancement Sites
- Overhead Powerline Project Areas
- Train Station
- KM Posts
- Railway

Strategic biodiversity values



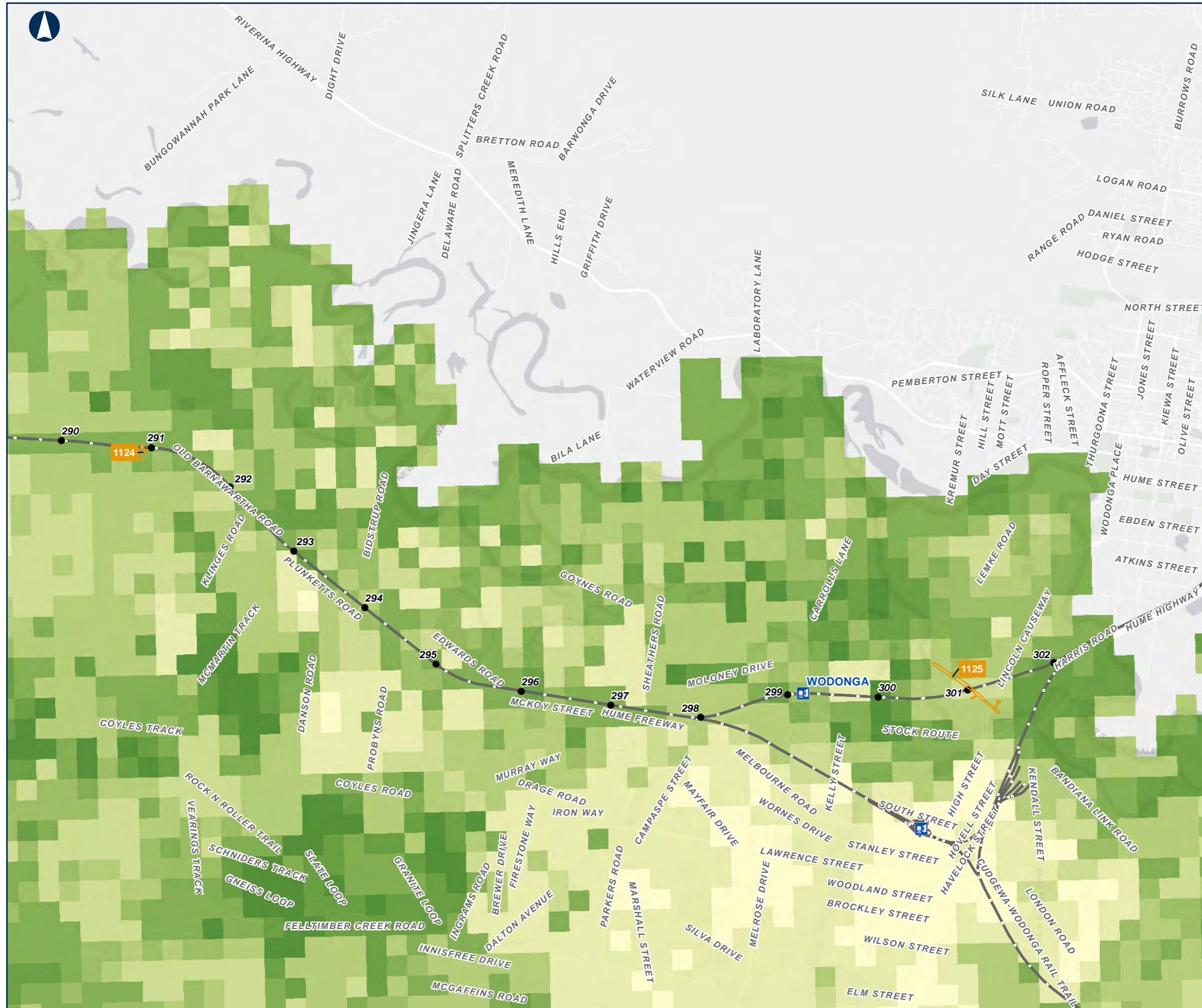
0 910 1,820 Meters

Coordinate System: GDA 1994 MGA Zone 55

ARTC makes no representation or warranty and assumes no duty of care or other responsibility to any party as to the completeness, accuracy or suitability of the information contained in this GIS map. The GIS map has been prepared from material provided to ARTC by an external source and ARTC has not taken any steps to verify the completeness, accuracy or suitability of that material. ARTC will not be responsible for any loss or damage suffered as a result of any person whatsoever placing reliance upon the information contained within this GIS map.

Date: 5/07/2021
 Author: JB
 Data Sources: DELWP (2020)

Paper: A3
 Scale: 1:40,000
 Figure 18



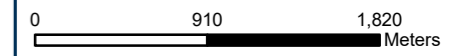
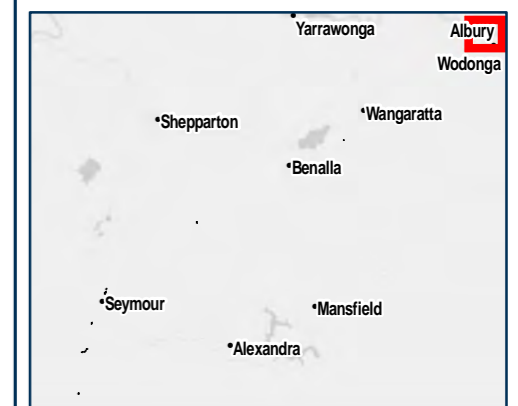
Strategic Biodiversity Value

MAP 16 OF 16

- Overhead Powerline Project Areas
- Train Station
- KM Posts
- Railway

Strategic biodiversity values

- 90- 100
- 80 - 90
- 65- 80
- 50- 65
- 40- 50
- 25- 40
- 15 - 25
- 1 - 15



Coordinate System: GDA 1994 MGA Zone 55

ARTC makes no representation or warranty and assumes no duty of care or other responsibility to any party as to the completeness, accuracy or suitability of the information contained in this GIS map. The GIS map has been prepared from material provided to ARTC by an external source and ARTC has not taken any steps to verify the completeness, accuracy or suitability of that material. ARTC will not be responsible for any loss or damage suffered as a result of any person whatsoever placing reliance upon the information contained within this GIS map.

Appendix B – Figures

Figure 19 Environmental overlays