

# Rail Corridor Program

## Narromine Materials Distribution Centre

### PROJECT FACT SHEET

NSW

ARTC Inland Rail has identified a requirement for two materials distribution centres to service the future installation of ballast, sleepers, rail and turnouts along approximately 570km of the Inland Rail alignment between Narromine and Gowrie, in Queensland. Narromine has been selected as the preferred location for the southern materials distribution centre.

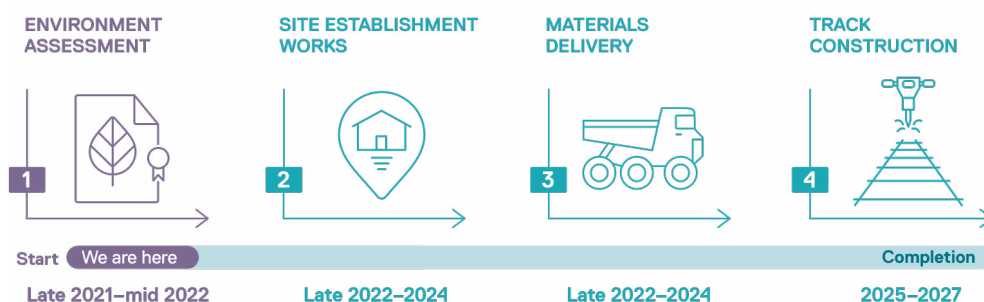
The 400ha Narromine facility is proposed to be located on ARTC-owned land adjacent to the existing Narwonah siding, off Narwonah Siding Road, approximately 8km south of the Narromine township (see map over page). Australian-owned company Martinus has been awarded a contract to deliver the Rail Corridor Program.

#### Key features

Key features of the proposed temporary facility include:

- + Ballast stockpile
- + Ballast loading conveyors
- + Sleeper and other precast concrete product stockpile
- + Rail stockpile
- + Sleeper and rail handling gantries
- + Area to prepare and weld rail
- + Locomotive provisioning and maintenance facilities
- + General construction laydown and container storage.

#### Project timeline



*\*Timeframes are indicative and are subject to change. Please note major construction will not start until statutory approvals have been received.*

#### Environmental investigations

Development of the Narromine Materials Distribution Centre, including environmental approvals, is being progressed separately to the Narromine to Narrabri section of Inland Rail.

We are carrying out environmental investigations at the site, including cultural heritage, air quality, noise and vibration, and flooding to assess the potential impacts and inform the development of mitigation measures. These studies will be detailed in a Review of Environmental Factors report (REF). The REF will be placed on public exhibition and open for public submissions in mid-2022.

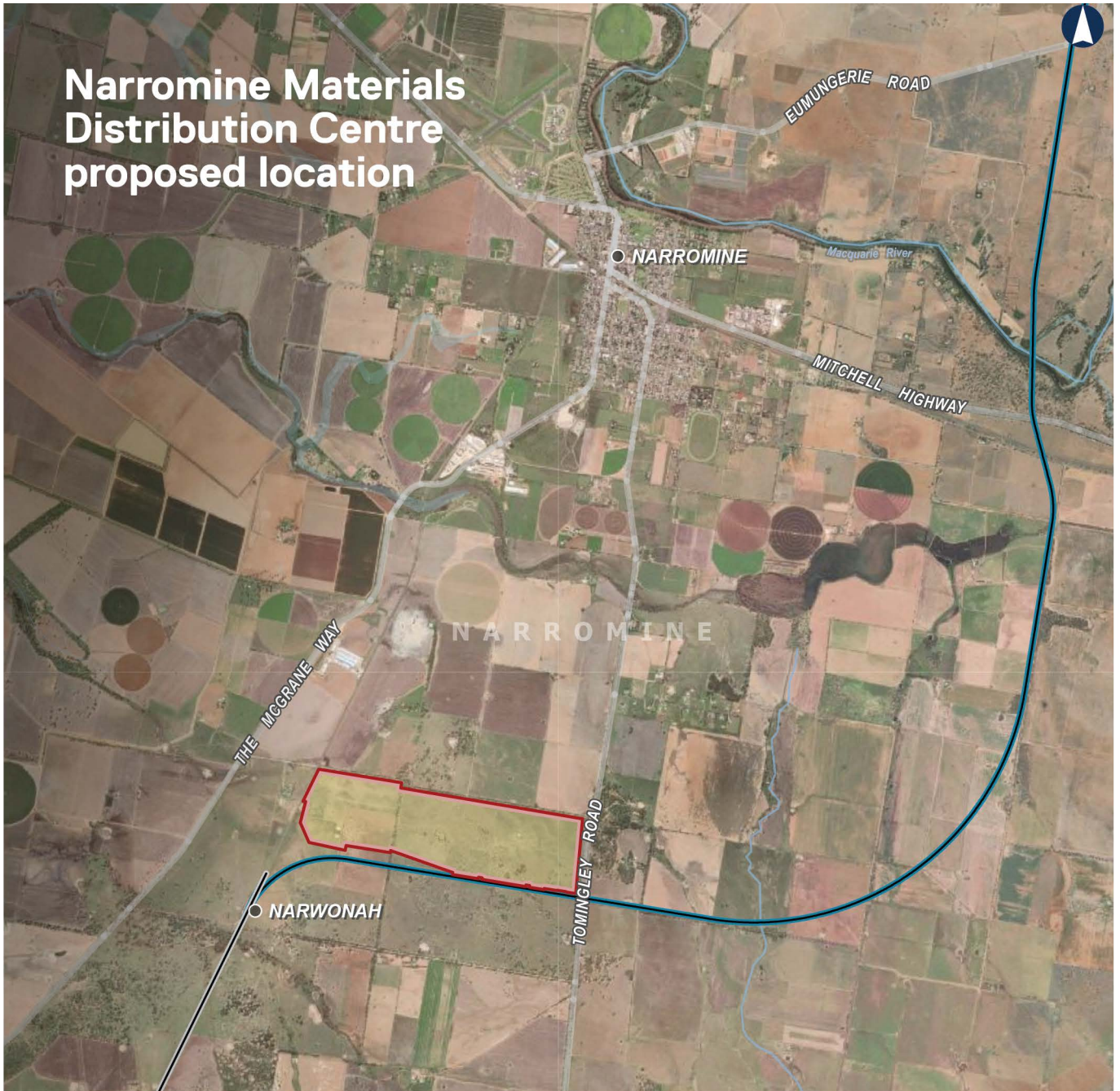
#### Hours of operation

During site establishment and the materials delivery phase, work will be carried out between 6am and 6pm, up to seven days per week.

During the track construction phase, activities at the facility may also take place out of hours. If out-of-hours work is required, prior notification will be provided to nearby residents.

Activities to be undertaken at site include, but are not limited to: unloading, loading and movement of materials, including ballast, rail and sleepers; welding and grinding of rail; locomotive provisioning and maintenance; and other general construction activities.

# Narromine Materials Distribution Centre proposed location



## Have your say

Please contact the stakeholder engagement team on **1800 732 761** or email [inlandrailnsw@artc.com.au](mailto:inlandrailnsw@artc.com.au) if you have any questions or feedback about the Narromine Materials Distribution Centre.

## LEGEND

 Proposed Narromine Materials Distribution Centre


### Inland Rail Alignment

 N2N – Narromine to Narrabri

 P2N – Parkes to Narromine

## Want to know more?

ARTC is committed to working with landowners, communities, state and local governments as a vital part of our planning and consultation work, and we value your input. If you have any questions or comments, please let us know.

 1800 732 761

 [inlandrailnsw@artc.com.au](mailto:inlandrailnsw@artc.com.au)

 ARTC Inland Rail, GPO Box 14, Sydney NSW 2001

[inlandrail.com.au](http://inlandrail.com.au)

