

# Border to Gowrie Proposed road network changes in Athol

## FACT SHEET

## QLD

The Border to Gowrie project is currently in the approvals stage.

During the project's reference design stage, we carried out field investigations and consulted widely with landowners and key stakeholders. The information and feedback we collected helped us complete a project reference design and deliver a draft Environmental Impact Statement (EIS) which was released for public notification and comment by the Queensland Coordinator-General in 2021. This design included details such as the proposed rail alignment, public road/rail crossings, and the project footprint.

In developing the reference design, we considered technical viability, safety, operational restrictions, constructability, environment, and community and property impacts.

**After extensive engagement with the local community and road managers, we are proposing to update the design of Purcell Road and Athol School Road.**

### The proposed updated design in this area

- + allows for a rail-over-road grade separation at Athol School Road, rather than a closure as previously proposed in the project's draft EIS
- + includes closing Purcell Road at the rail interface, rather than a passive level crossing as previously proposed in the project's draft EIS, increasing safety benefits for the community
- + proposes a new road and intersection connecting Purcell Road and Athol School Road
- + directs motorists to the Athol School Road/Gore Highway intersection for safer turn movements
- + provides a more direct route to and from Toowoomba via Athol School Road compared to the reference design solution
- + seeks to minimise property severance and impacts to dwellings.

### Technical constraints considered

- + motorists' safety and intersection sight distances
- + property severance and land use
- + existing critical farming infrastructure
- + compliant rail geometries
- + road vehicle clearance at Athol School Road
- + maintaining existing road speed environment.

Although we're seeking formal approval of the proposed alignment via the Border to Gowrie project's EIS, some changes (such as bridge heights) may occur as a result of further investigations or during the detailed design process.

Any changes will need to be in line with the project's environmental approval process and associated conditions. We will continue to seek community feedback on the project's design and will keep you informed of any updates.

Detailed design will be carried out by BHQ Joint Venture. BHQ Joint Venture is the preferred proponent appointed to design and construct the Northern Civil Works Program within the Border to Gowrie project between Whetstone and Gowrie.

### How we engaged

- + landowner meetings
- + site and property visits
- + Community Consultative Committee (CCC) meetings
- + technical working group meetings with road managers
- + community information sessions
- + Social Impact Assessment community survey and workshops
- + community workshops
- + online interactive map.

## Who we engaged with

- + potentially impacted landowners
- + local businesses
- + government agencies and local councils
- + community members
- + industry and economic development groups
- + CCC members.

## What you told us was important

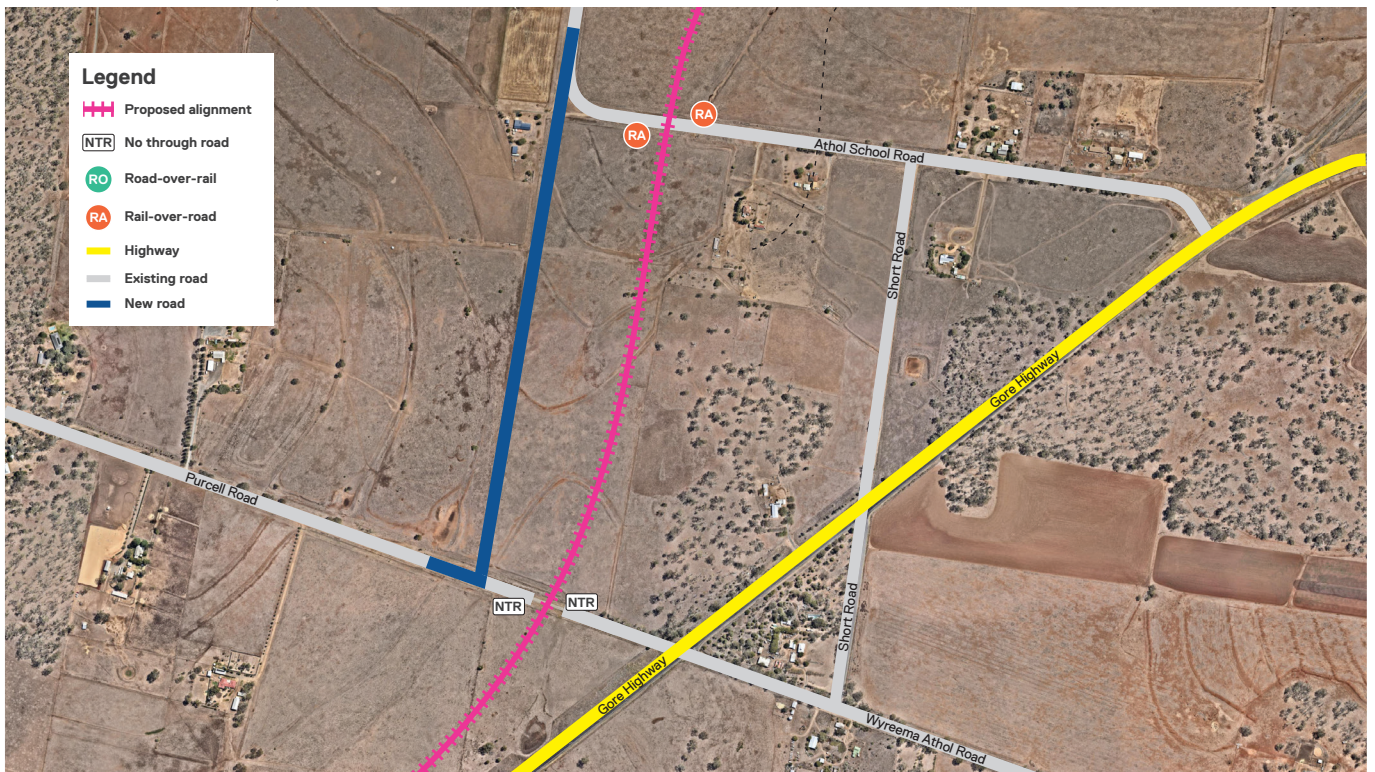


Information from residents, government agencies and road authorities, as well as traffic counts were used to develop the proposed Purcell Road and Athol School Road redesign.

Feedback from the community included:

- + requests to accommodate the movement of large trucks and farming machinery
- + concerns about maintaining access for emergency services
- + concerns about maintaining access to properties
- + requests to remove private level crossings and improve safety at road intersections
- + sharing information about the types and quantities of road movements
- + safe sighting distances at road intersections
- + impacts to property (value/severance)
- + maintaining access to farming infrastructure and not disrupting business operations
- + changes to roads, especially those used frequently by heavy machinery.

Athol School Road / Purcell Road, Athol



Disclaimer: Artist impression for consultation

## How your feedback is used

Your feedback has helped us identify issues to be addressed in the project's EIS, Social Impact Assessment and during detailed design. This information is also being used to influence the current design process, where possible.

## More information

To view the proposed alignment, learn more about proposed changes to roads or to provide feedback, please visit our interactive map at [maps.inlandrail.com.au/b2g#/](https://maps.inlandrail.com.au/b2g#/) or visit our project page [inlandrail.com.au/b2g](https://inlandrail.com.au/b2g)

## Want to know more?

ARTC is committed to working with landowners, communities, state and local governments as a vital part of our planning and consultation work, and we value your input. If you have any questions or comments, please let us know.

📞 1800 732 761

✉ [inlandrailqld@artc.com.au](mailto:inlandrailqld@artc.com.au)

📧 ARTC Inland Rail, PO Box 3093, Toowoomba QLD 4350

[inlandrail.com.au](https://inlandrail.com.au)

