



**LOCKYER VALLEY
COMMUNITY CONSULTATIVE COMMITTEE**

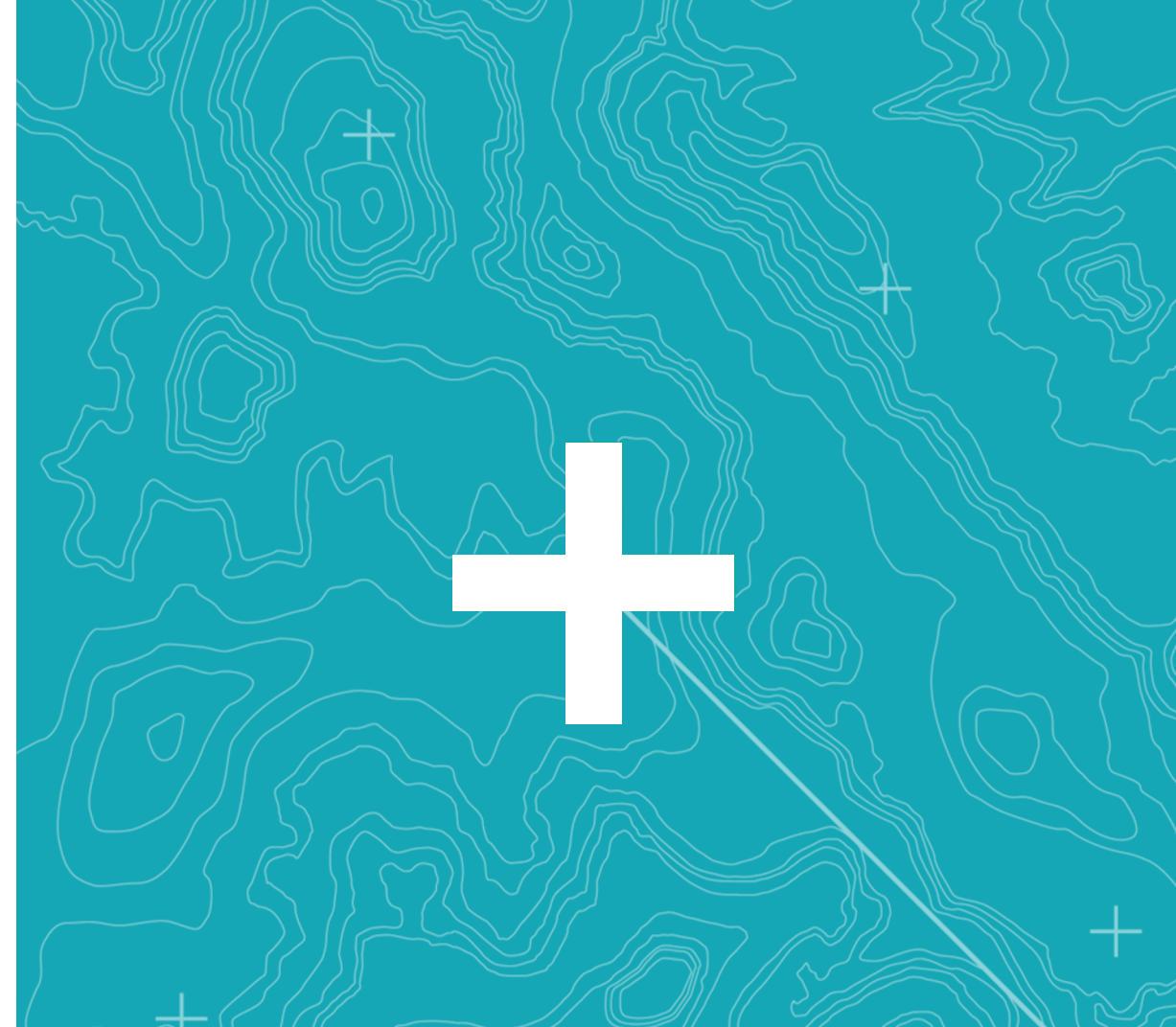
12 April 2022

LOCKYER VALLEY CCC MEETING

Introductions and apologies

Conflicts of interest

Welcome to Country





ACKNOWLEDGMENT OF COUNTRY

Inland Rail acknowledges the Traditional custodians of the land on which we work, and we pay our respects to Elders past and present.

AGENDA

1. Introductions, conflicts of interest, Welcome to Country
2. Actions from previous meeting
3. Announcement of PPP
4. Cultural Heritage
5. Social Performance
6. H2C project overview
7. G2H project overview
8. Stakeholder Engagement (G2H & H2C)
9. EIS update
10. Flood modelling
11. Toowoomba to Brisbane passenger rail
12. General business
13. Observer questions / general discussion
14. Meeting close

ANNOUNCEMENT / INTRODUCTION OF PREFERRED PROPONENT

TONY LUBOFSKY

DESIGN AND CONSTRUCT	MAINTENANCE	EQUITY	FINANCIAL ADVISOR / SPONSOR
<ul style="list-style-type: none"> ▶ GS Engineering & Construction (E&C) Australia Pty Ltd ▶ Webuild S.p.A ▶ Clough Projects Australia Pty Ltd <p>Design consultants: GHD, Arcadis, Italferr.</p>	<p>Service Stream Maintenance Pty Ltd</p>	<ul style="list-style-type: none"> ▶ Plenary Group Holdings Pty Ltd ▶ Webuild S.p.A ▶ GS E&C Corporation ▶ Clough Limited 	<p>Plenary Origination Pty Ltd</p>

REGIONERATE RAIL

The Regionerate Rail Design & Construct (D&C) Subcontractor Joint Venture members are shown below. The D&C Subcontractor is an integrated unincorporated joint venture between three entities:

GS Engineering and Construction

- Global construction company from South Korea
- Has completed >US\$65B of international projects incl 315km rail, 186km tunnels
- Recently won the Vic North East Link PPP (as part of the Spark consortium with Webuild and CPB).

Webuild (formerly Salini Impreglio)

- Global construction company from Italy
- Have constructed >10,000 km of rail over their 115 year history
- Currently involved in Vic North East Link Project, Snowy 2 (in joint venture with Clough)

Clough Projects Australia

- Clough is an engineering and construction company established in Perth in 1919
- Clough's infrastructure experience is generally in the resources sector.
- Currently delivering the Snowy 2.0 hydropower scheme in Tasmania (JV with Webuild).

The Regionerate Rail D&C joint venture parties will perform all tunnelling excavation, support and heavy civil fit-out activities including precast segment production.

Regionerate Rail's delivery strategy also includes local Tier 2 Subcontractors BMD, Bielby and Martinus Rail.

- **BMD** will be responsible for delivery of roads, rail civils and majority of bridge substructures for the H2C and C2K project sections. BMD's recent experience includes Inland Rail P2N section (JV with Fulton Hogan)
- **Bielby** will be responsible for delivery of roads, rail civils and majority of bridge substructures in the Gowrie to Helidon (G2H) project section. Currently engaged on the Inland Rail Northern Civil Works Program (part of BHQ JV).
- **Martinus Rail** will be responsible for delivery of project-wide rail ballast, sleeper and track installation. Currently engaged on the IR Rail Corridor Program in NSW and Southern Queensland.

CULTURAL HERITAGE

COREY DORAN

ABORIGINAL CULTURAL HERITAGE

- Recently met with Yuggera Ugarapul to discuss Social Performance matters.
- The pedestrian Aboriginal Cultural Heritage Surveys are ongoing. They have been underway since mid 2016.
- Stone artefact scatters and isolated artefacts were most common Aboriginal heritage sites that were identified during the surveys, followed by scarred trees.
- These sites, items and places will be managed under the measures set out in the approved Cultural Heritage Management Plan that Yuggera Ugarapul and Western Wakka Wakka have with Inland Rail.
- Some of these management activities will include avoidance, salvaging of surface artefact scatters and archaeological test-pitting to determine site extents and deposit depth.

ABORIGINAL CULTURAL HERITAGE



Selina Nalatu

Cultural Heritage Advisor

0428 186 301

SNalatu@ARTC.com.au

Corinne Harvey

Cultural Heritage Advisor

0488 774 280

CHarvey@ARTC.com.au

SOCIAL PERFORMANCE UPDATE

ASHLEY WILLIAMS

SOCIAL PERFORMANCE UPDATE

Artwork Program

Artwork Title (left) – Family Feast

Description - Ugarapul artist Keith Simpson describes his artwork as elders taking the young ones out to hunt food and sitting at the bora rings to feast, impart their wisdom on the ways of hunting and tell dream time stories.

Artwork Title (right) – Yuggera Country

Description - Created by Yuggera artist Ashley Kemp, the artwork depicts the sand goanna which is the totem of the Yuggera Peoples. The sun in each corner represents the Yuggera people travelling North, South, East and West of the Yuggera country.



Skills and Training Program

Skilling Queenslanders for Work (SQW Program)

- Program owner Energy Skills Queensland
Delivered by Centre Excellence Rail Training (CERT)
- 12 participants (7 Indigenous) completed 8 week –
Certificate 2 Rail Infrastructure
- three-quarter of the cohort working on rail currently
(rail labour companies)



SOCIAL PERFORMANCE UPDATE

Community engagement

- Laidley NAIDOC 2021, members from our project teams assisted in flipping burgers and serving beverages (top photo)
- Newtown Park (Toowoomba) Yuggera Ugarapul Community BBQ / Project update (bottom photo)
- Queens Park (Ipswich) Yuggera Ugarapul Community BBQ / Project update.



SOCIAL PERFORMANCE UPDATE

Supporting Men's Group

- Inland Rail supporting Men's and young Men's group through funding
- Certificate 4 Mental Health Training
- Regular Men's group yarning sessions (weekly)
- Weekend camps on country (Cultural Practices)
- Families and Fathers fun days
- Artefact making.



HELIDON TO CALVERT OVERVIEW

ROBERT WALKER

HELIDON TO CALVERT (H2C) UPDATE

Focus over the next 6 months:

- Regionerate Rail to lock in a baseline for the construction contract
 - LVRC – at Gatton confirming traffic modelling and extent of road works for closure of Gaul Street level crossing
 - ICC and ARTC continue to discuss the level crossings at Grandchester Mount-Mort Road and Calvert Station Road
 - Coordinating with QR to agree to details and timing of enabling works
- EIS team to ensure any updates go into the draft EIS
- Property Team to update land acquisition requirements.

GOWRIE TO HELIDON OVERVIEW

NAWAR SPEAR

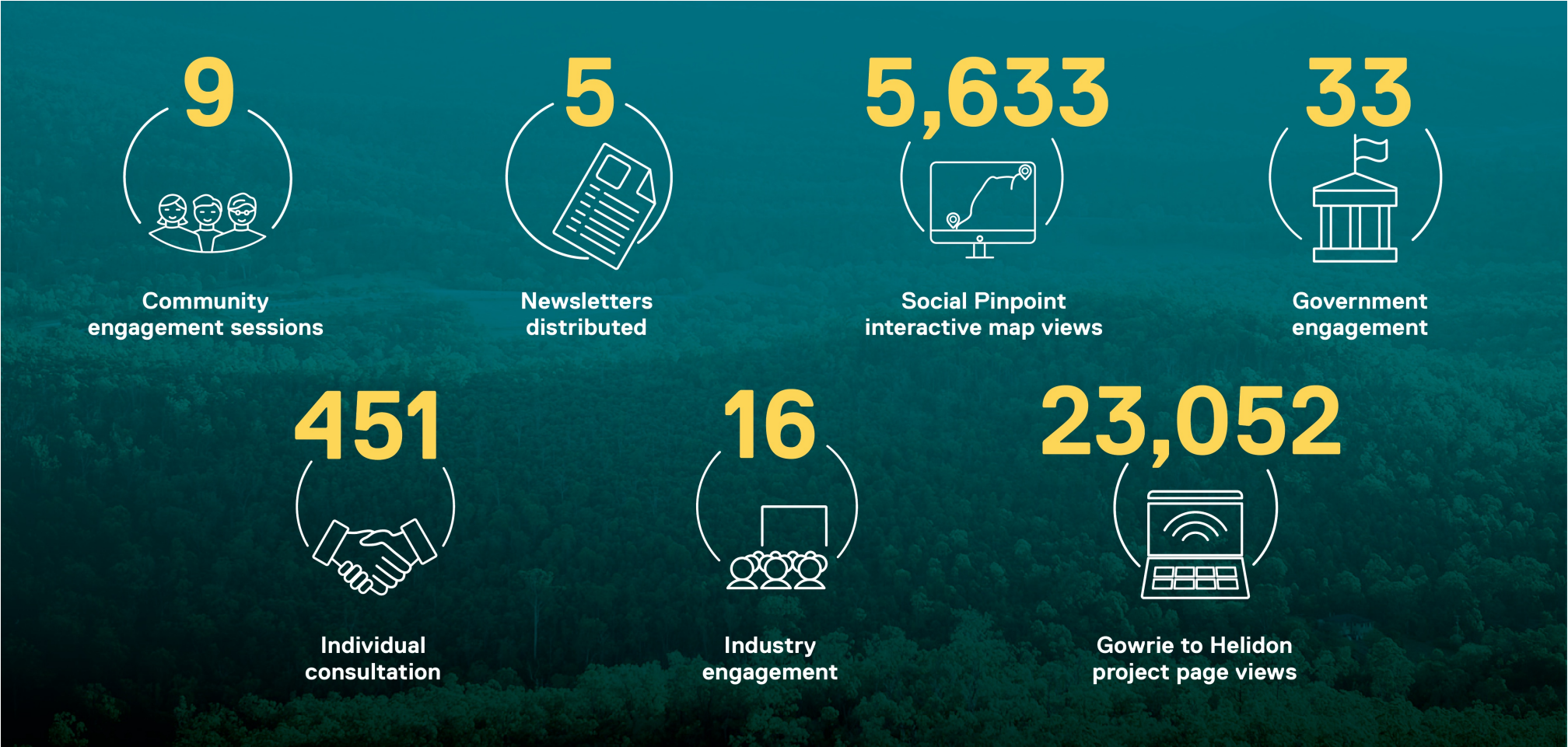
Local Government Authorities

- Road rail interfaces (RRIs) are a key matter of the Local Government Authorities impacted by the G2K PPP.
- ARTC are working collaboratively with Local Government Authorities to progress and resolve outstanding matters.
- ARTC continues to work with Toowoomba Regional Council (TRC) and Lockyer Valley Regional Council (LVRC) to resolve their respective RRIs and other matters.
- Council Interface

STAKEHOLDER ENGAGEMENT UPDATE (G2H & H2C)

COREY DORAN

G2H COMMUNICATION ENGAGEMENT ACTIVITIES FY20-21



H2C COMMUNICATION ENGAGEMENT ACTIVITIES FY20-21



ENGAGEMENT ACTIVITIES

Planned and ongoing

- PPP preferred bidder announcement
- Groundwater bore survey
- Interactive noise map available for stakeholders
- Review of existing Interactive Map comments
- Early works have been identified in the Boundary Street/Western Tunnel portal area, engagement will commence once works receive necessary approvals
- Withcott Family Fun Day, 24 April 2022 – sponsorship applicant
- Laidley RSL markets, 30 April 2022.



ONGOING COMMUNICATION CHANNELS

Inland Rail email

inlandrailqld@artc.com.au

Inland Rail phone

1800 732 761

Social media



Facebook, Instagram, LinkedIn, Twitter, YouTube

Online interactive maps

Consultation interactive map & operational noise modeling map

Project posters

Social Impact Assessment, Terms of Reference, EIS, Qld assessment of projects

Project fact sheets

Air, hydrology, level crossings, land access, flood studies, noise and vibration, geotechnical activities,

Presentations

Councils (Lockyer Valley and Toowoomba), CCC meetings, information sessions, workshops, industry, business and community groups

Enewsletters

(encompassing the 3 PPP projects)

Sent to more than 24,500 recipients since March 2017

EIS UPDATE AND INTERACTIVE NOISE MAPS

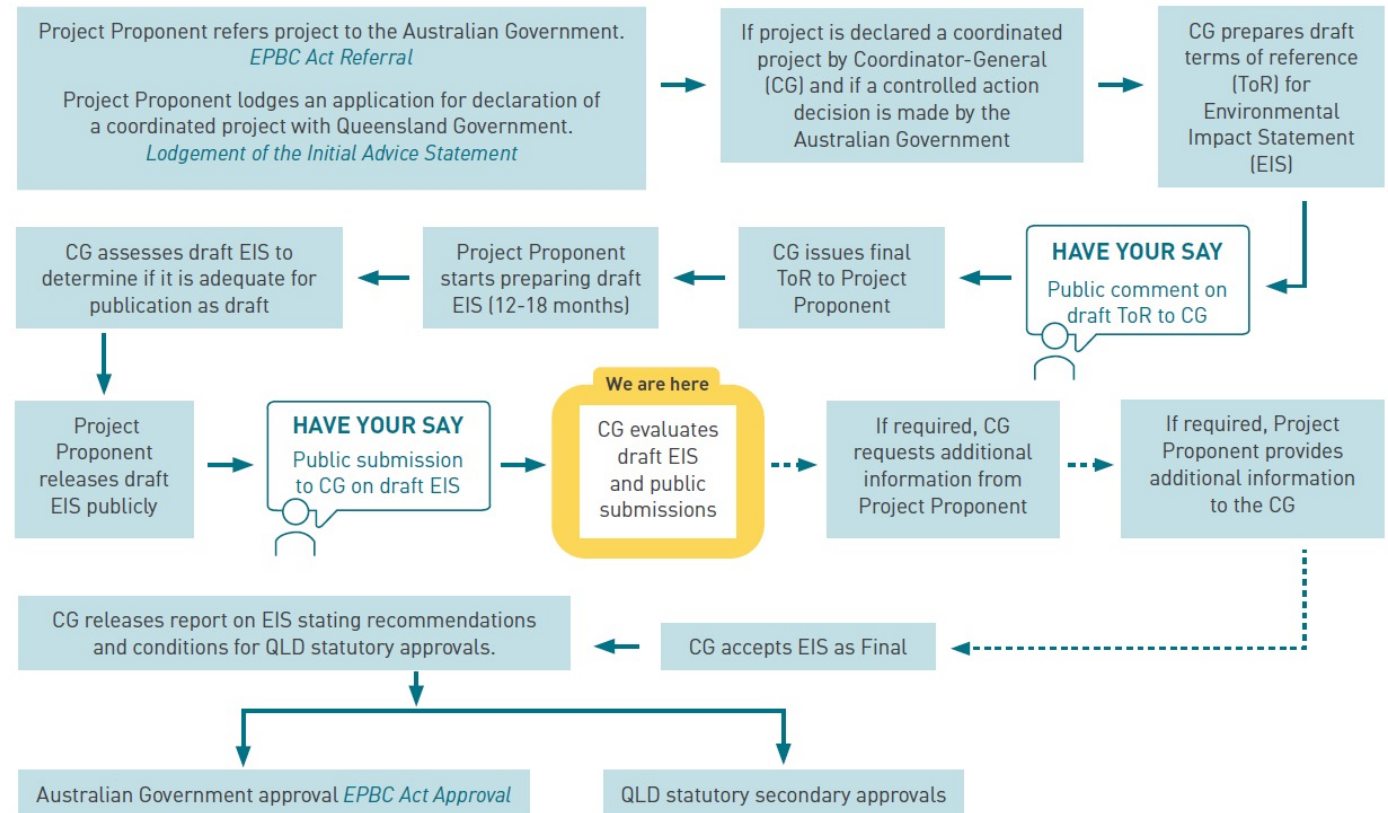
MICHAEL PRICE

WHERE ARE WE AT IN THE EIS PROCESS

Office of Coordinator General

- Evaluated all submissions
- Awaiting formal feedback
- Consulting with the OCG on how and when certain items in the Border to Gowrie and Calvert to Kagaru RFIs will be addressed

Approvals process for Queensland major projects

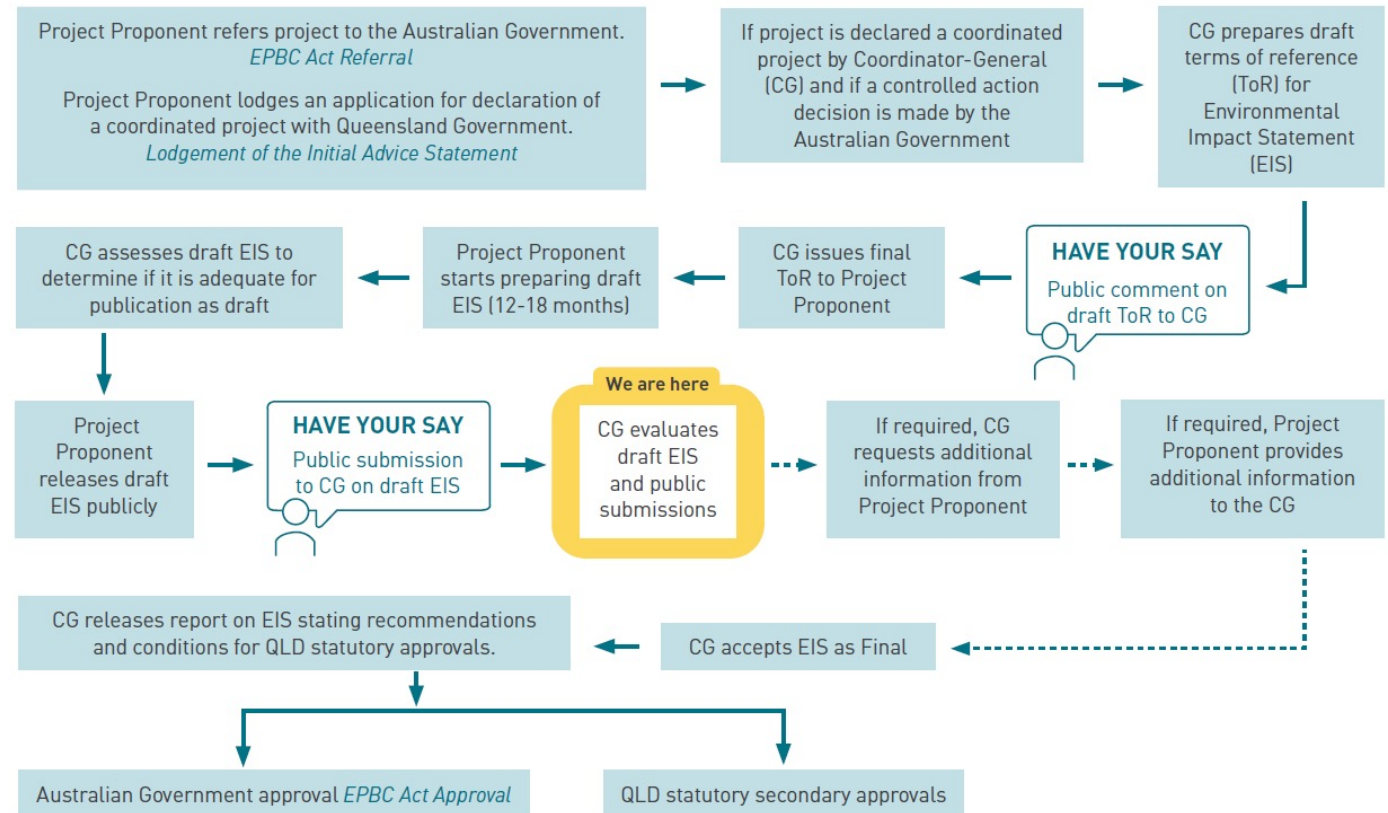


WHAT ARE ARTC DOING IN THE EIS SPACE

- Reviewed the RFIs and submissions and developed a response and/or action plan. Needs to be updated to reflect:
 - the Regionerate Rail bid
 - any changes to the Project (internal & external) and approval processes
 - changes to legislation, policies and guidelines etc

Key piece will be consultation and engagement with the public.

Approvals process for Queensland major projects



Independent International Panel of Experts for Flood Studies in Queensland

- Draft report issued 2 June 2021 for H2C and 5 August 2021 (G2H)
- Comments to be addressed on each of the catchment areas:
 - Western Creek – 9 comments (H2C)
 - Lockyer Creek – 15 comments (G2H/Upper Lockyer) and 21 comments (H2C)
 - Gowrie Creek – 21 comments (G2H)
- ARTC has responded to each comment
- Regularly met with Expert Panel to discuss and agree on:
 - Flood impact objectives
 - Approach to addressing issues raised in each comment
 - Present outcomes from additional investigation on comments
 - Agree outcomes and stage of project at which each item will be addressed (majority in revised Draft EIS)

ARTC are looking to undertake a workshop on this matter having recently undertaken one for C2K.

HYDROLOGY AND FLOODING UPDATES

RFI item details from the OCG	ARTC response
Address the matters raised in the Independent Panel of Experts for flood studies in Queensland's <i>Draft Report on Review of the Calvert to Kagaru Section</i> (C2K draft report).	ARTC will respond to all items raised by the Panel. Please see next slide for further detail.
Incorporate quantitative flood impact objectives (FIOs) as per Expert Panel Report	ARTC will include quantitative objectives.
Impact assessment to consider all events up to 1% AEP event using the quantitative FIOs.	ARTC will include this.
Demonstrate that the project incorporates consultation with landholders regarding the proposed impacts to their property.	ARTC will continue to discuss proposed landholders impacts to properties.
Include geomorphological assessment of waterways.	ARTC will include this assessment.
Provide a Quantitative assessment of flow distribution for all events up to the PMF.	ARTC will provide this assessment.
Provide an assessment and mitigation of potential flood impacts on evacuation routes for communities.	ARTC will provide this assessment and mitigation.
Identify additional inputs for detailed design stage modelling – e.g. noise barriers etc	ARTC will identify and include these.
Updated flood impact mapping.	ARTC will update and include these maps.

ONGOING WORKS

Ecology

- EMM Consulting are still undertaking fieldwork along the alignment – temporal variation
- Engaged a koala specialist to develop a koala management plan
- ARTC have developed fauna sensitive design guidelines for Inland Rail
 - Engaging a consultant to develop a fencing and fauna passage strategy
- Community input will be part of the process

Hydrology

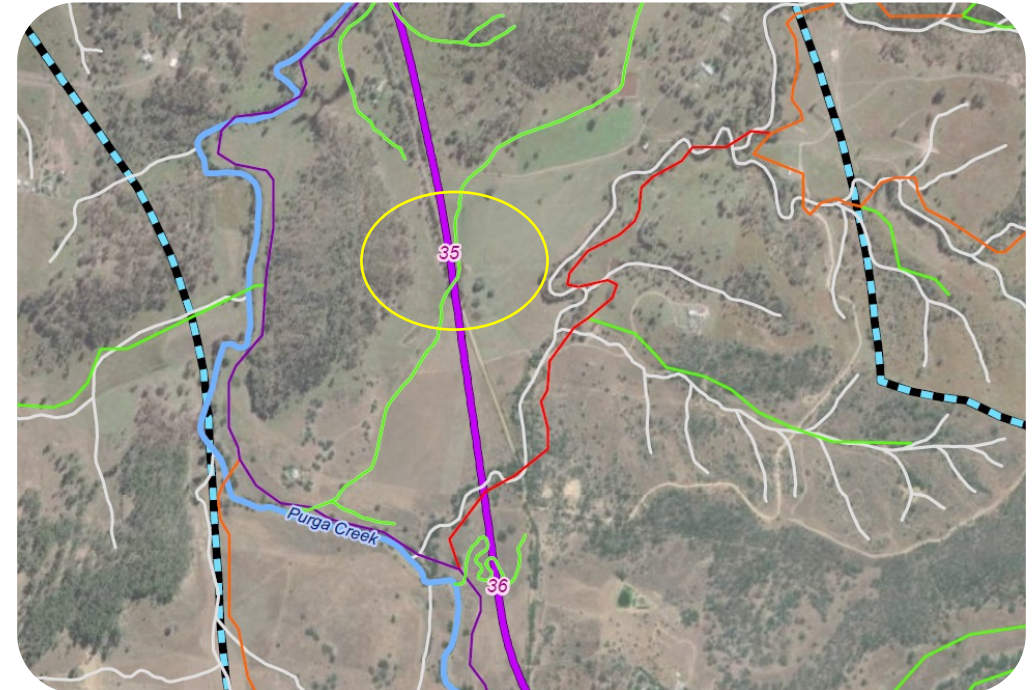
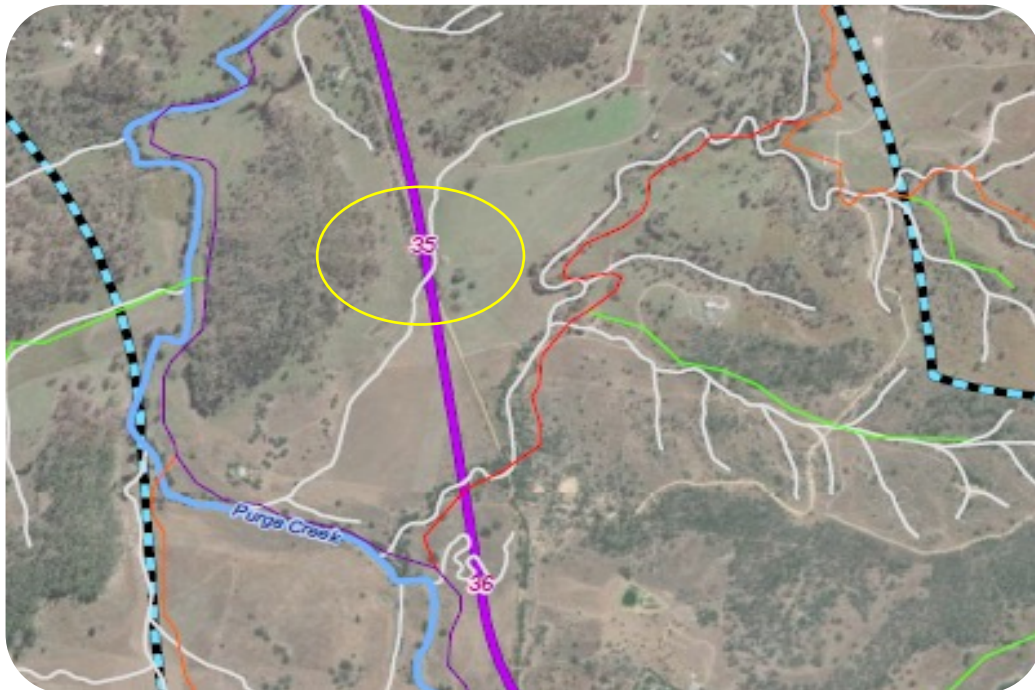
- Collecting flood data from the February event, including meeting with landholders to map out flood markers

Groundwater and surface water

- Monitoring is still ongoing on a monthly basis (commenced February 2021)
- Groundwater model has been updated in consultation with the Department of Regional Development, Manufacturing and Water.

SURFACE WATERWAY CLASSIFICATIONS

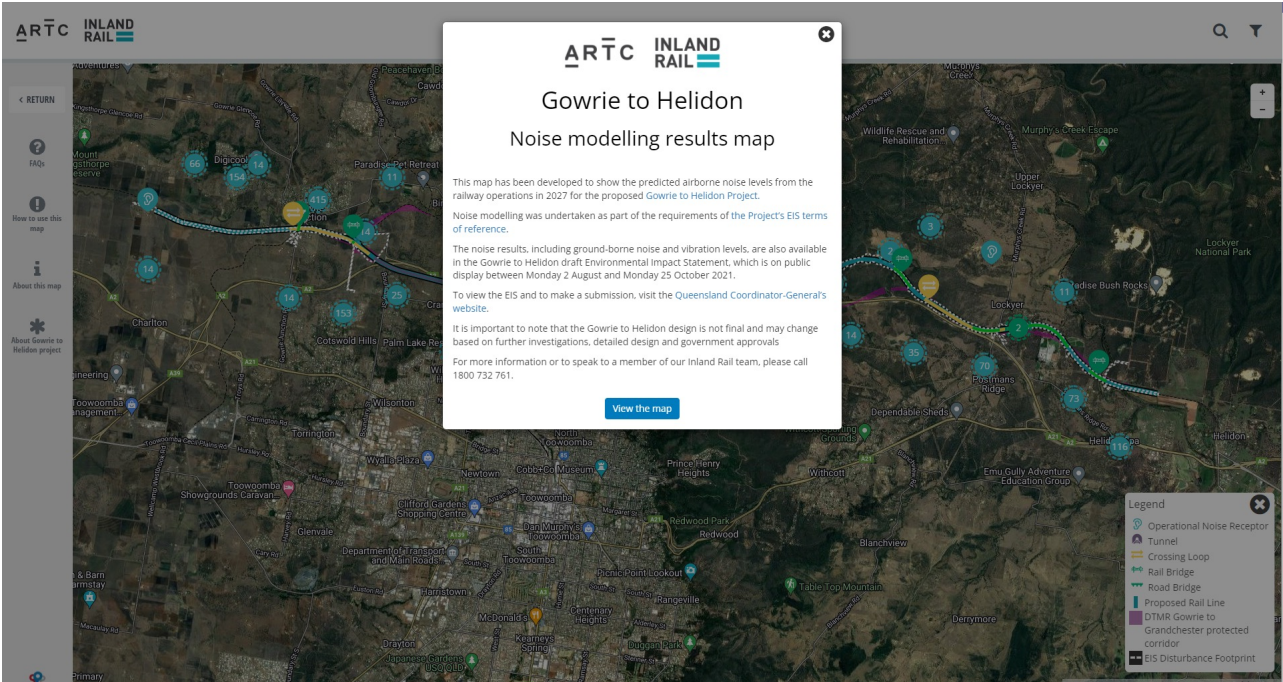
- Waterways classified under the *Fisheries Act 1994* are being refined in accordance with new guidelines
- The Department of Regional Development, Manufacturing and Water are currently in the process of updating the watercourse identification mapping.



H2C & G2H INTERACTIVE NOISE MAPS

Now publicly available on the Inland Rail website:

- Gowrie to Helidon: [G2H noise map](#)
- Helidon to Calvert: [H2C noise map](#)



FLOOD MODELLING

MICHAEL PRICE

QUESTIONS FROM COMMITTEE MEMBERS

- During the rain events in February and March, did Inland Rail collect any flood data from key flood areas in the Lockyer Valley?
- If data was collected, what happens with it, will it be used in any way? IE, will ARTC update / redo the flood modelling?
- If data was collected, were there any positive findings? IE, where flood modelling indicated flooding in a particular area, did the recent events show a different result?
- The flood report is still being finalised and isn't available yet, will the flood panel take the recent events in to consideration and how do they assess the additional information / data? Will it delay finalising the report?
- For future rain events, will any data be taken into consideration in the planning of building Inland Rail? Or once the flood panel has finalised its report, its complete and never to be revisited?
- Will the proponent do their own flood modelling?

PASSENGER RAIL DISCUSSION

SIMON WARNER, CHAIR

TOOWOOMBA TO BRISBANE PASSENGER RAIL

(NOT INLAND RAIL SCOPE)

This information has been provided by the Department of Infrastructure, Transport, Regional Development and Communications (DITRDC) who has a representative on the TMR-led technical working group that is exploring this business case.

- The Queensland Government's Department of Transport and Main Roads (TMR) and the Australian Government's Department of Infrastructure, Transport, Regional Development and Communications (DITRDC) have partnered to undertake a strategic business case to progress initial phases of investigations that has examined the benefits, options and timing to deliver improved passenger rail service connections in the Toowoomba to Brisbane corridor.
- The findings from the strategic business case are currently being considered by both governments, and will inform the next steps for the project, including whether the project proceeds to a detailed business case.
- The strategic business case has considered the opportunity for integrating passenger rail services with future freight operations on the new Inland Rail infrastructure between Gowrie and Calvert based on the Inland Rail reference design. If the project proceeds to a detailed business case, any developments to the Inland Rail design since the strategic business case was completed will be considered.
- Ongoing engagement with all local governments within the study area (Toowoomba, Lockyer Valley, Ipswich, Brisbane and Somerset) has been critical to capturing local insights. Local government and ARTC have provided input to the project through a technical working group, including assessment of options to deliver improved passenger rail services. TMR and DITRDC have also provided project updates to these Councils.
- Broader stakeholder engagement on the project would occur as part of the detailed business case.

1. Sponsorships and Donations – round 13 – closes 30 April 2022
2. Next meeting – August 2022 (TBA)

OBSERVER QUESTIONS

THANK YOU

ARTC

INLAND
RAIL 
An Australian Government Initiative