

ARTC

INLAND
RAIL
An Australian Government Initiative



Scenic Rim and Ipswich Community Consultative Committee meeting

5 May 2022

SCENIC RIM AND IPSWICH CCC

- **Welcome to country**
- **Introductions**
- **Conflicts of interest**

ACKNOWLEDGEMENT OF COUNTRY

ARTC

We acknowledge the Traditional Custodians of this Country and their deep connection to land, sea, and community. We respect Elders past and present who have looked after the land and waters for millennia. In the spirit of reconciliation we extend that respect to all Aboriginal and Torres Strait Islander people

Journey artwork created by Elenore Binge, proud Goomerol/Karrilaroi woman



PREVIOUS ACTIONS

NO.	CONCLUSION AND CONFIRMATION OF ACTIONS	ACTION BY	DUE DATE	RESPONSE
1	Ongoing updates to members regarding the C2K EIS interactive workshops.	ARTC	05/05/2022	To be provided tonight. Closed.
2	Ongoing mental health updates in SRICCC meetings	ARTC	05/05/2022	To be provided tonight. Closed.
3	Distribute email address for intermodal terminal updates	ARTC	05/05/2022	Provided on 28/03/2022. Closed
4	Share the reverse timing information to Toowoomba (Gowrie Junction to Acacia Ridge and Bromelton	ARTC	05/05/2022	Provided on 21/04/22. Closed
5	Follow up meeting regarding the train timing information, coordinated via AD-G.	ARTC	05/05/2022	Meeting held. Closed.
6	ARTC to liaise with the OCG regarding the submitters being contacted directly about ARTC consultation activities.	ARTC	ASAP	Submitters are being contacted. Closed.
7	Chair to email SRICCC members regarding next meeting date.	KB	05/05/2022	Closed.

COMMITTEE MEMBER QUESTIONS

CULTURAL HERITAGE UPDATE



SOCIAL PERFORMANCE – MENTAL HEALTH UPDATE

SOCIAL PERFORMANCE AND MENTAL HEALTH

- PHN Mental Health Partnership (NewAccess Program)
 - All GPs engaged (via PHN Liaison Officers)
 - Inland Rail promotion and communications
 - Service providers attending upcoming community workshop
- Indigenous mental health (men's group) support
- Independent wellbeing measures: Living in Place Survey
- Social & Business Opportunity Workshop 18 May:
 - Community Health and Wellbeing
 - Workforce Management
 - Accommodation Management
 - Industry Participation (Business Opportunities)



SOCIAL PERFORMANCE PROGRAM

ARTC recognises its responsibility to deliver and operate Inland Rail with the least social impact possible, while enhancing the benefits Inland Rail will deliver to the people of Australia at both a local and national scale



SOCIAL PERFORMANCE – INDIGENOUS PARTICIPATION

ARTWORK PROGRAM

Artwork Title (left) – Family Feast

Description - Ugarapul artist Keith Simpson describes his artwork as elders taking the young ones out to hunt food and sitting at the bora rings to feast, impart their wisdom on the ways of hunting and tell dream time stories.

Artwork Title (right) – Yuggera Country

Description - Created by Yuggera artist Ashley Kemp, the artwork depicts the sand goanna which is the totem of the Yuggera Peoples. The sun in each corner represents the Yuggera people travelling North, South, East and West of the Yuggera country.



SKILLS AND TRAINING PROGRAM

Skilling Queenslanders for Work (SQW Program)

- Program owner Energy Skills Queensland
- Delivered by Centre Excellence Rail Training (CERT)
- 12 participants (7 Indigenous) completed 8 week – Certificate 2 Rail Infrastructure
- 3/4 of the cohort working on rail currently (Rail Labour Companies)



COMMUNITY ENGAGEMENT

- Laidley NAIDOC 2021, members from our project teams assisted in flipping burgers and serving beverages (top photo)
- Newtown Park (Toowoomba) Yuggera Ugarapul Community BBQ / Project update (bottom photo)
- Queens Park (Ipswich) Yuggera Ugarapul Community BBQ / Project update.



SUPPORTING MEN'S GROUP

- Inland Rail supporting Men's and young Men's group through funding
- Certificate 4 Mental Health Training
- Regular Men's group yarning sessions (weekly)
- Weekend camps on country (Cultural Practices)
- Families and fathers' fun days
- Artefact making.



INTRODUCTION TO SUSTAINABILITY

JODY FINSEN

AGENDA

1. Introduction to sustainability
2. Sustainability objectives
3. Achievements to date
4. Aspirations

What is sustainability on Inland Rail?

CUSTOMER DEMANDS



■ **CONNECTED**

■ **FAST**

└ Straight and flat

■ **RELIABLE**

└ 98%

■ **COST EFFECTIVE**

└ 35%

NOW
33hrs

FUTURE
< 24

**MELBOURNE
TO BRISBANE**

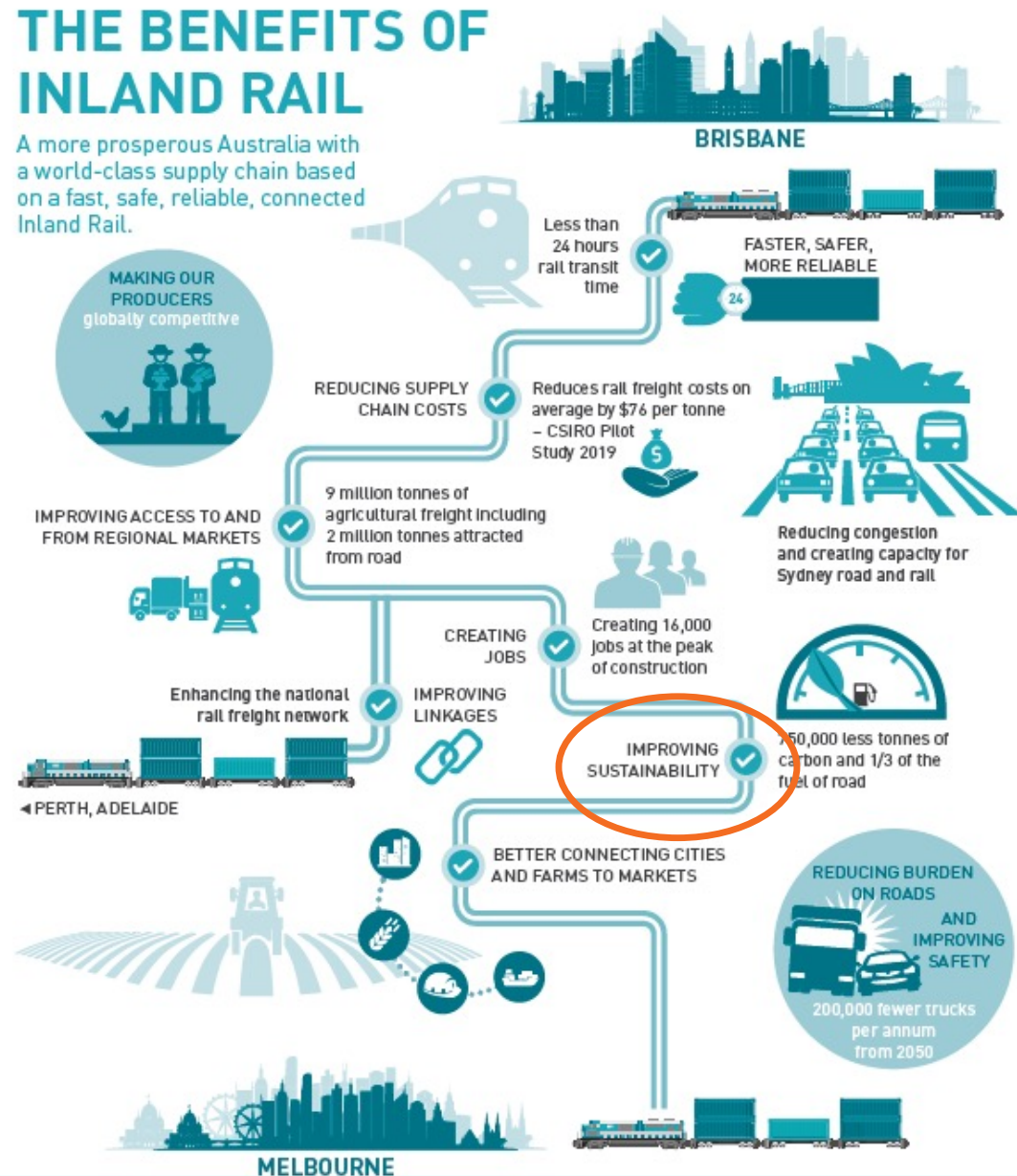
**Express trains
close to that
of trucks**

35%



THE BENEFITS OF INLAND RAIL

A more prosperous Australia with a world-class supply chain based on a fast, safe, reliable, connected Inland Rail.



INFRASTRUCTURE SUSTAINABILITY

**Infrastructure that is
Planned, designed, constructed and operated
to optimise environmental, societal, and economic
outcomes over the long term**

Or Infrastructure with well measured and considered value

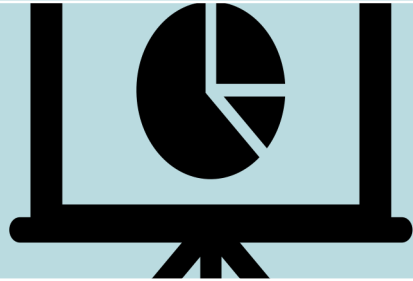
SNAPSHOT

Sustainability = Going beyond business as usual & finding ways to provide lasting benefits to people & the environment through everything we do. Sustainability is relevant to the office, design, on site construction and through our supply chain.



CULTURE

- Staff training
- Induction
- Lunch N Learn
- Info sharing
- Empowering teams
- Communication



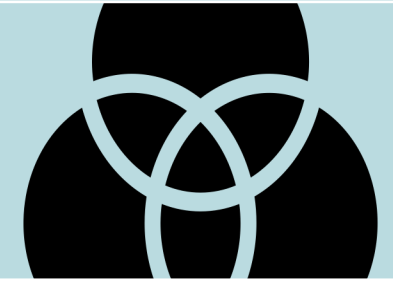
INTEGRATION

- Governance systems
- Sustainable Procurement
- Social, environmental & economic targets
- Project Sustainability Management Plans
- Facilitation & engagement



REPORTING

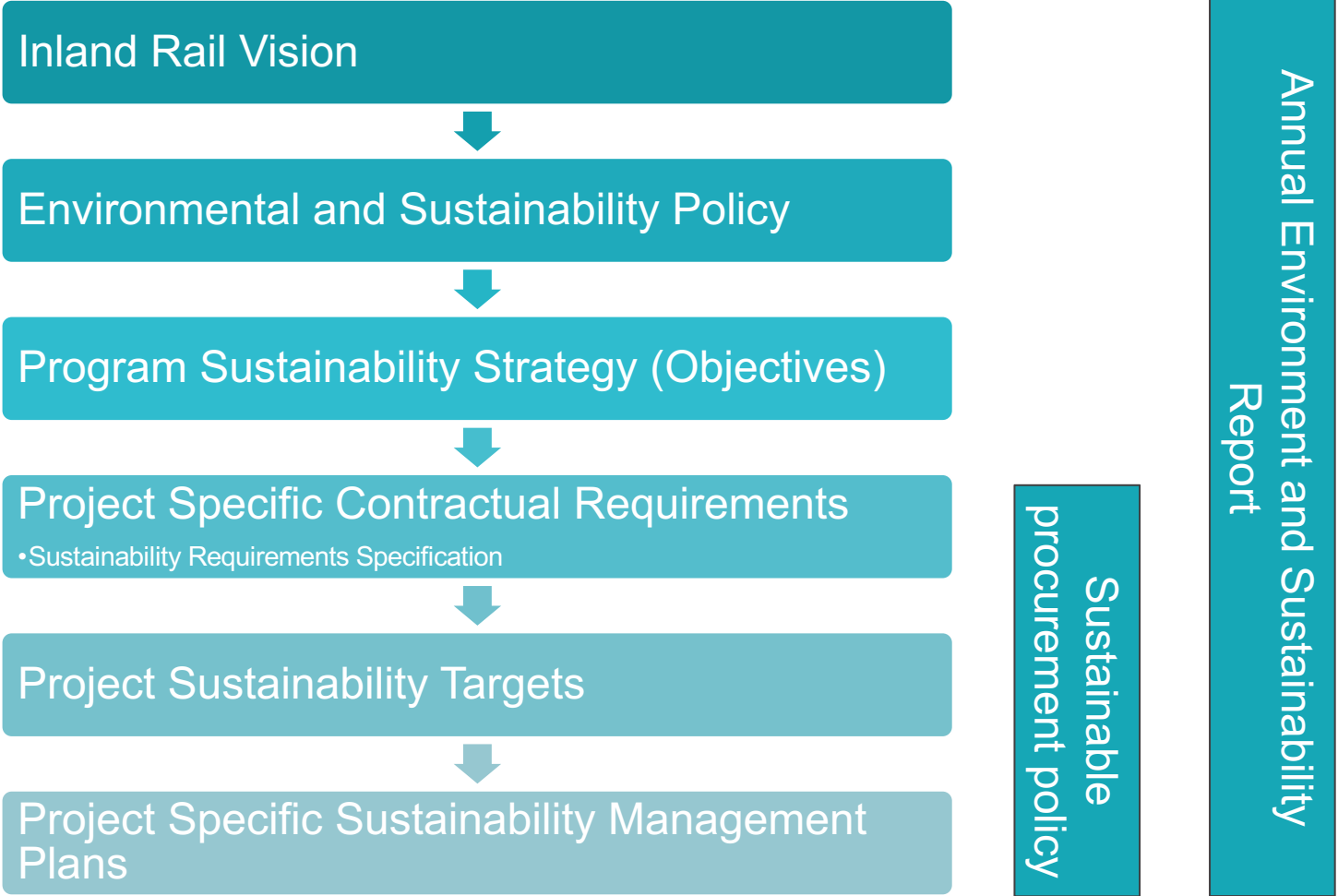
- Monthly projects updates
- Quarterly sustainability reporting to executive
- Annual public report



VERIFICATION

- Independent evaluation
- Infrastructure Sustainability Rating tool
- Excellent score
- Program wide rating

SUSTAINABILITY HIERARCHY



SUSTAINABILITY POLICY

Inland Rail Environment and Sustainability Policy

Inland Rail commit to the following throughout design, construction and operation:

- ▶ **No harm:**
 - ▶ Our goal is that no-one is harmed at work or on our network.
- ▶ **Engage early and meaningfully with stakeholders, including Indigenous organisations, communities, industry and government:**
 - ▶ Build effective working relationships and a shared understanding of the Program and solutions.
- ▶ **Promote long-term economic benefits within communities:**
 - ▶ Create lasting opportunities for development of skilled local and Indigenous workers;
 - ▶ Support local and Indigenous businesses to ensure they are prepared for and provided with opportunities to participate; and
 - ▶ Enable Inland rail to be a catalyst for complementary private sector investment.
- ▶ **Protect the environment by minimising the environmental footprint:**
 - ▶ Apply the principles to avoid, minimise, offset to manage impacts to receiving environments and ecological values;
 - ▶ Reduce greenhouse gas emissions and minimise waste;
 - ▶ Minimise water use;
 - ▶ Continually investigate opportunities to improve environmental values and prevent pollution, and;
 - ▶ Obtain and comply with all environmental approvals and compliance obligations.
- ▶ **Future-proof Inland Rail so it is efficient and effective in the long term:**
 - ▶ Design for client change resilience;
 - ▶ Incorporate the future demand requirements and corridor uses in current design.
- ▶ **Base decisions on a balanced consideration of technical, economic, environmental and social elements:**
 - ▶ Adopt a consistent approach across the Program.
- ▶ **Regularly review and audit processes and performance:**
 - ▶ Challenge the way we have always done things – ensure we are doing what we said we would do.
- ▶ **Drive a culture of continuous improvement:**
 - ▶ Seek to improve, collaborate and value add throughout delivery, and;
 - ▶ Continually improve our Environmental Management System to enhance environmental performance.



Rebecca Pickering

Chief Executive Officer - Inland Rail

August 2024

Our policy sets the intent of sustainability on Inland Rail with 7 focus areas

- No Harm *
- Engage early and meaningfully with stakeholders, including indigenous organisations, communities, industry and government
- Promote long-term economic benefits within communities
- Future-proof Inland Rail so it is efficient and effective in the long term *
- Base decisions on a balanced consideration of technical, economic, environmental and social elements *
- Regularly review and audit processes and performance
- Drive a culture of continuous improvement *

SUSTAINABILITY OBJECTIVES

1 Leadership and awareness



2 Governance



3 Community and economy



4 Environment and heritage



5 Resource use



6 Sustainable procurement



7 Future operations

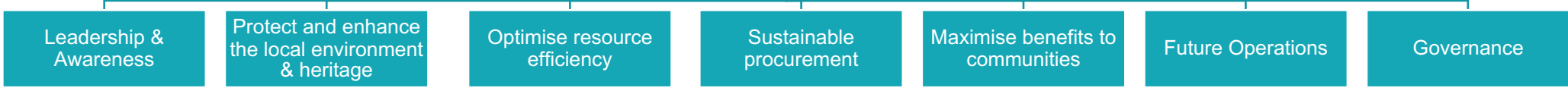


SUSTAINABILITY OBJECTIVES AND TARGETS

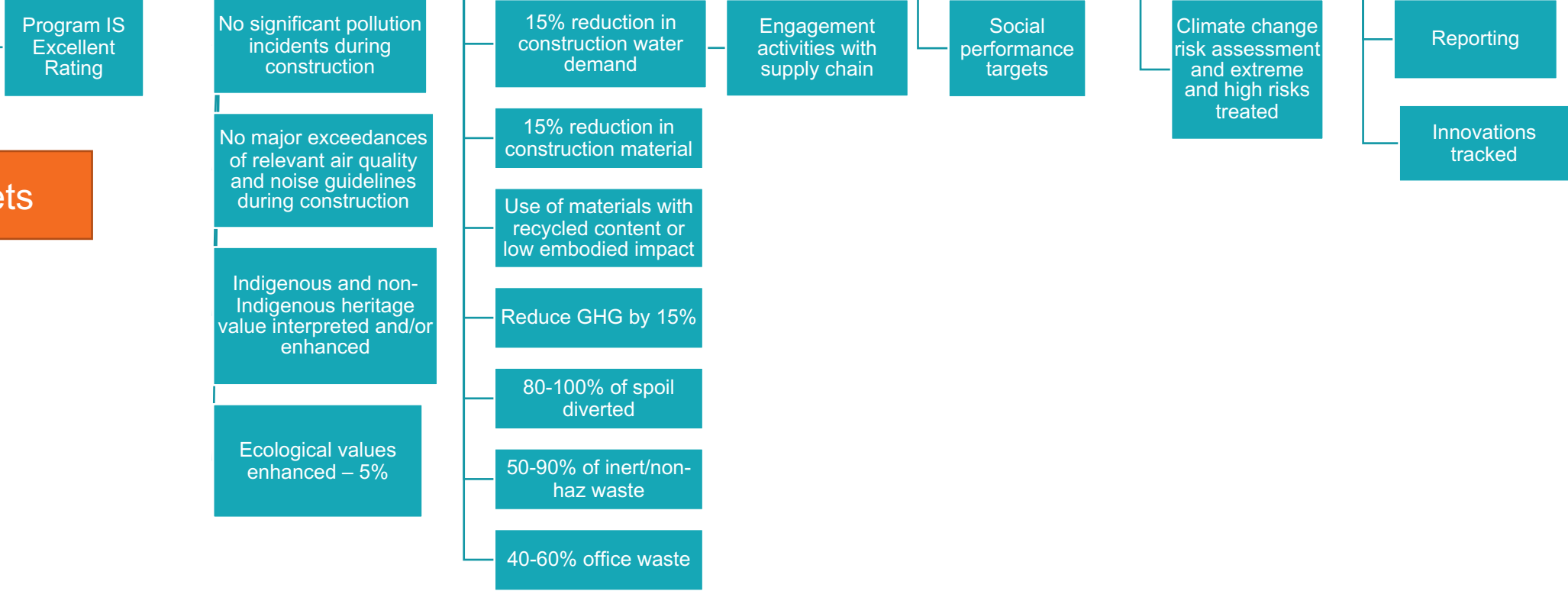
Objectives

Environment and Sustainability Policy

Sustainability Strategy



Targets



SUSTAINABILITY VERIFICATION

HOW WE WILL MEASURE PROJECT SUCCESS

Third party independent verification - ISCA

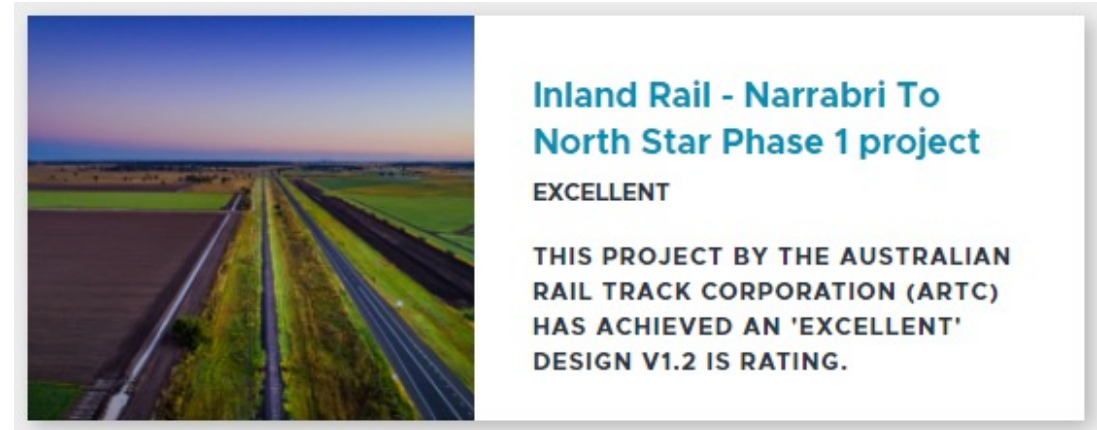
All projects & Program registered for ISCA Design & As-Built Rating

Achieve Infrastructure Sustainability rating of “Excellent” (50-74 points)

Condition of Approval on NSW CSSI projects

Details

- Rating Type **Rail**
- Rating Score **53**
- Registered Date **April 2016**
- Certification Date **November 2020**
- Jurisdiction **Australia**
- States **NSW**



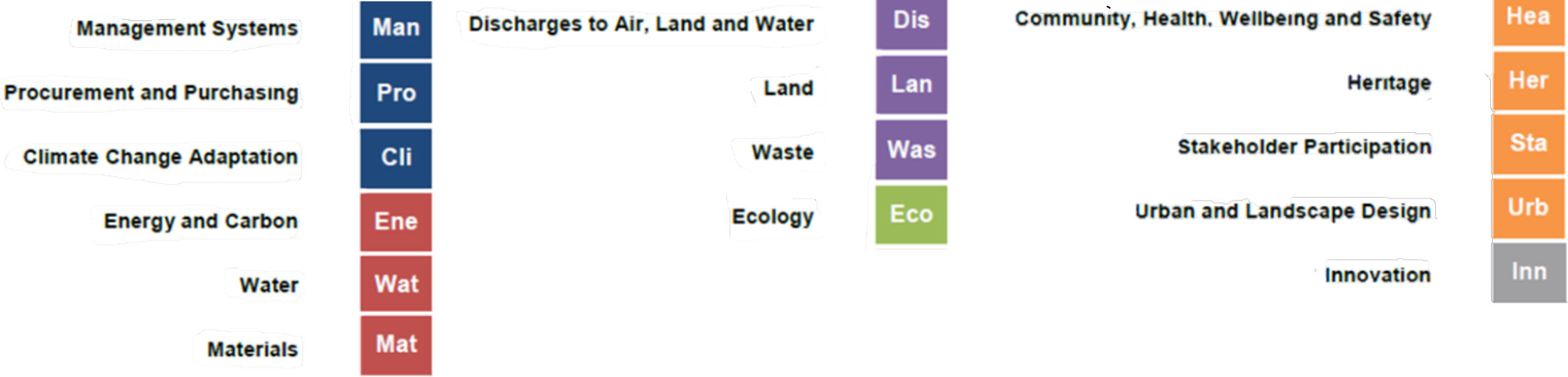
This project by Australian Rail Track Corporation (ARTC) has achieved an 'Excellent' Design v1.2 IS Rating.



MEMBERS



WHAT ISCA CONSIDERS



ISCA BY DISCIPLINE

Project Discipline	ISCA Credit areas	Key Focus and Consideration	Key inter-related outputs and examples
Project Director/ Project Manager	<ul style="list-style-type: none"> • Management • Procurement and Purchasing 	To integrate sustainability into the projects management and procurement systems and approach.	<ul style="list-style-type: none"> • Project Scope • Procurement approach • Reporting Frameworks
Design and Engineering	<ul style="list-style-type: none"> • Climate Change Adaptation • Energy & Carbon • Water • Materials • Discharge • Waste • Community Health, Wellbeing, and Safety (CPTED) • Urban Design 	The Focus for design relates to material selection and quantities – How do design decisions impact resilience and other whole of life considerations now and for the life of the asset?	<ul style="list-style-type: none"> • Material Selection and Quantity • Reduction in earthworks (= less water, energy and resources) • Reuse of spoil • Stakeholder feedback in design • Approvals and Monitoring programs
Hydrology	<ul style="list-style-type: none"> • Climate Change Adaptation • Water • Materials • Discharge 	<p>Focus is on Water use in construction and the interactions with Stormwater and Groundwater</p> <p>This is also a subset of Design and Engineering, so what are the decisions relating to resilience and other whole of life considerations with regards to Aflux now and for the life of the asset?</p>	<ul style="list-style-type: none"> • Aflux modelling • Stormwater design • Approvals and Monitoring programs
Environment, Heritage, Stakeholder, Sustainability	<ul style="list-style-type: none"> • Discharge • Waste • Ecology • Land • Community Health, Wellbeing, and Safety • Heritage • Urban design 	Key parts of these credits focus on how impacts of the project are mitigated or enhance the broader community and environment the project occurs in.	<ul style="list-style-type: none"> • Approvals and Monitoring programs • Stakeholder engagement • Indigenous participation

DE-RISKING SUSTAINABILITY

- Program wide sustainability policies, strategy, and guidance documents
- Monthly dashboard reporting template; Quarterly progress reviews & Annual internal & external Audits
- Program wide Deconstruction plan
- Program Climate change risk assessment framework
- Program GHG footprint calculator & guide
- Program Base Case BAU assumptions document – verified by ISCA
- Program credits – approved for project specific input
- Sustainability Requirements Specification – contract
- Sustainability built into procurement documents

HOW CAN WE INTEGRATE SUSTAINABILITY INTO PROJECTS

1.

Understand our commitment

Sustainability vision & integrated into policies, strategies, approvals & contracts

2.

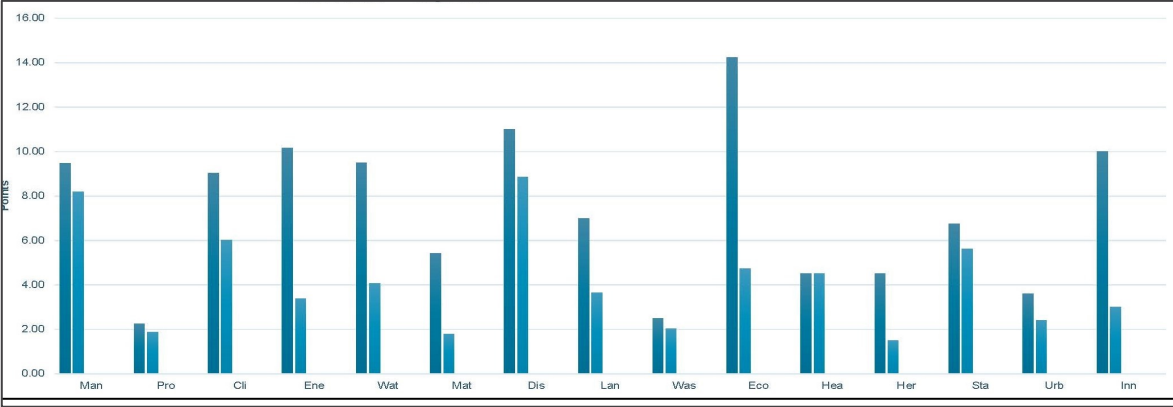
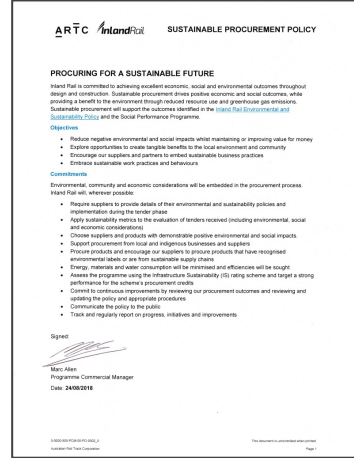
Sustainability requirements specification

Clearly stated sustainability requirements included in project contracts

3.

Collaborate to deliver sustainability rating

Entire team delivering an IS 'Excellent' rating



Inland Rail will complete the backbone of our nation's freight rail network

We are partnering to deliver a project of national significance

FURTHER INFORMATION OR QUESTIONS?

Jody Finsen

Sustainability Manager Program

0416 464 138

Jfinsen@ARTC.com.au

BREAK



10 minutes

PROJECT UPDATE

DON PIGGOTT-MCKELLAR

PROJECT UPDATE

Preferred Proponent Phase

- Regionerate Rail are the Preferred Proponent – presentation to follow.

Environment Impact Statement (EIS)

- Updates ongoing to develop the revised draft EIS
- Ongoing engagement with Federal, State and Local Governments
- Working on request for information from CG
- Expect to re-submit revised draft EIS to Coordinator General late 2022.
- Second round of Public Consultation will follow, likely 2023
- Construction commencement will occur after EIS approval, dependent on land resumption process.
- Reviewing construction program with Regionerate Rail, updated construction timeline will be included in revised draft EIS.

INTERACTIVE SESSIONS

Format: 2-hour sessions, approx. 15min presentation by ARTC per topic, followed by Q&A and community led discussion/break out groups.

Interactive sessions	Proposed Date	Event details
Surface Water, Hydrology, Flooding, Groundwater	Saturday 26 March	Harrisville, 9 – 11am (Complete)
Flora & Fauna, Sustainability and Offsets	Thursday 28 April	Peak Crossing, 6 – 8pm (Complete)
Social Performance and Business Opportunities	Wednesday 18 May	Ipswich, 5 – 7pm
Noise and Vibration	Saturday 11 June 2022	Purga, 9 – 11am
Traffic and Level Crossings	<u>Was:</u> Tuesday 24 May 2022. <u>New date:</u> TBC	Peak Crossing, 6 – 8pm (Location TBC dependent on availability)
Project Description – introduce proponent to CCC, community via markets/pop-ups	TBC	TBC

WORKSHOP UPDATE – SURFACE WATER, FLOODING, HYDROLOGY, GROUNDWATER

- Held in Harrisville on Saturday 26 March from 9 – 12 (extended by 1 hour due to demand on the day)
- 22 community members attended in person with 3 external stakeholders attending online

Key feedback provided by community members	ARTC response
Request for viewing of local flood-impacted areas by subject matter experts in person.	<ul style="list-style-type: none"> - Subject matter experts and ARTC staff viewed some flood-impacted locations on Thursday 31 March. This information will be incorporated into ARTC’s modelling. - ARTC emailed landowners for recent images of flooding to share with the hydrologists. - ARTC will include February 2022 floods as a validation event in their modelling. A range of different flood events will be used in the models.
Request for a more local presence in the Peak Crossing community, similar to the Gatton office.	<ul style="list-style-type: none"> - ARTC staff to investigate holding some ‘drop-in’ sessions held closer to the C2K alignment e.g in Ipswich.
It was difficult to locate bores in the EIS maps – needs to be presented at a more micro level.	<ul style="list-style-type: none"> - ARTC will review the way the bore information is presented in the EIS maps with the intent of making it more visible.

REGIONERATE RAIL UPDATE

REGIONERATE RAIL

DESIGN AND CONSTRUCT	MAINTENANCE	EQUITY	FINANCIAL ADVISOR / SPONSOR
<ul style="list-style-type: none"> ▶ GS Engineering & Construction (E&C) Australia Pty Ltd ▶ Webuild S.p.A ▶ Clough Projects Australia Pty Ltd <p>Design consultants: GHD, Arcadis, Italferr.</p>	<p>Service Stream Maintenance Pty Ltd</p>	<ul style="list-style-type: none"> ▶ Plenary Group Holdings Pty Ltd ▶ Webuild S.p.A ▶ GS E&C Corporation ▶ Clough Limited 	<p>Plenary Origination Pty Ltd</p>

REGIONERATE RAIL

The Regionerate Rail D&C Subcontractor Joint Venture members are shown below. The D&C Subcontractor is an integrated unincorporated joint venture (D&C JV) between the three entities.

GS Engineering and Construction

- Global construction company from South Korea
- Has completed >US\$65B of international projects incl 315km rail, 186km tunnels
- Recently won the Vic North East Link PPP (as part of the Spark consortium with Webuild and CPB).

Webuild (formerly Salini Impreglio)

- Global construction company from Italy
- Have constructed >10,000 km of rail over their 115-year history
- Currently involved in Vic North East Link Project, Snowy 2 (in joint venture with Clough)

Clough Projects Australia

- Clough is an engineering and construction company established in Perth in 1919
- Clough's infrastructure experience is generally in the resources sector.
- Currently delivering the Snowy 2.0 hydropower scheme in Tasmania (JV with Webuild).

REGIONERATE RAIL

Regionerate Rail (D&C JV) intends to self-perform all tunnelling excavation, support and heavy civil fit out activities including precast segment production.

Regionerate Rail's delivery strategy also includes local Tier 2 Subcontractors BMD, Bielby and Martinus Rail.

- **BMD** will be responsible for delivery of roads, rail civils and majority of bridge substructures for the H2C and C2K project sections. BMD's recent experience includes Inland Rail P2N section (JV with Fulton Hogan)
- **Bielby** will be responsible for delivery of roads, rail civils and majority of bridge substructures in the Gowrie to Helidon (G2H) project section. Currently engaged on the Inland Rail Northern Civil Works Program (part of BHQ JV).
- **Martinus Rail** will be responsible for delivery of project-wide rail ballast, sleeper and track installation. Currently engaged on the IR Rail Corridor Program in NSW and Southern Qld.

GENERAL BUSINESS

- Round One 2022 – Peak Crossing State School, Ipswich State School and Ipswich Table Tennis Association.
- Sponsorships and Donations – next round opens 1 May, closes 31 July 2022:
<https://inlandrail.artc.com.au/opportunities/sponsorships-and-donations/>
- Date for next SRICCC meeting.
- Cultural Awareness training for CCC members to be held prior to the next CCC meeting.



Beaudesert State High School STEM Mastery Program
(2021 successful applicant)

OBSERVER QUESTIONS

CONFIRMATION OF ACTIONS

THANK YOU

ARTC

INLAND
RAIL 
An Australian Government Initiative