



Scenic Rim and Ipswich Community Consultative Committee meeting

4 August 2022

- **Acknowledgement of Country**
- **Introductions**
- **Conflicts of interest**

ACKNOWLEDGEMENT OF COUNTRY

ARTC

We acknowledge the Traditional Custodians of this Country and their deep connection to land, sea, and community. We respect Elders past and present who have looked after the land and waters for millennia. In the spirit of reconciliation we extend that respect to all Aboriginal and Torres Strait Islander people

Journey artwork created by Elenore Binge, proud Goomerol/Kamilaroi woman



PREVIOUS ACTIONS

NO.	CONCLUSION AND CONFIRMATION OF ACTIONS	ACTION BY	DUE DATE	RESPONSE
1	Presentation/update at the next SRICCC meeting re land parcel information	ARTC	04/08/2022	To be provided tonight. Closed.
2	Provide a summary of the mental health presentation for SRICCC members	ARTC	04/08/2022	Provided on 28/07/22. Closed.
3	Share the K2ARB Public Health Network information with SRICCC members	ARTC	04/08/2022	Provided on 28/07/2022. Closed.
4	Re-visit promotional messaging for the C2K EIS interactive workshop – Social Performance and Business Opportunities to clarify what Social Performance includes eg in e-DM and online materials.	ARTC	04/08/2022	Provided by 18/05/22. Closed.
5	Provide more information regarding what the 5% enhancement of ecological values means for the C2K project.	ARTC	04/08/2022	Provided on 28/07/22. Closed.
6	Undertake a koala management plan meeting with SRICCC/community member input.	ARTC	04/08/2022	Scheduled for 18/08/22. Closed.
7	Undertake a follow-up online Flora and Fauna, Sustainability and Offsets meeting	ARTC	04/08/2022	Undertaken on 30/07/22. Closed.

CULTURAL HERITAGE

The Cultural Heritage Team will be out in the field undertaking further field work in the upcoming months to inform the revised draft EIS.



LAND ACQUISITION

SEVERANCE AND RATIONALISATION

AMANDA REED

LAND ACQUISITION

Who will acquire the land required for Inland Rail?

The Department of Transport and Main Roads (TMR), on behalf of the Queensland Government, is the acquiring authority for the Queensland section of Inland Rail and will manage the compulsory land acquisition process under the Queensland legislation as set out in the *Acquisition of Land Act 1967 (ALA)*.

When will land be acquired or resumed?

- Compulsory land acquisition for the rail corridor will occur only after the Environmental Impact Statement is final and the Coordinator-General has provided an evaluation report.
- The Project is acquiring impacted land now on a voluntary sale basis.

LAND ACQUISITION

Compulsory Land Acquisition Process

- Following relevant approvals, ARTC will request TMR compulsory acquire required land (that has not already been acquired).
- Each impacted landowner will be consulted to be made aware of the land requirements, and their rights and entitlements under the acquisition process.
- TMR will adhere to the land acquisition process as set out in the ALA, including providing landowners with a Notice of Intention to Resume, objection rights, and should the acquisition go ahead, a Taking of Land Notice. Should land be taken under this process, then interest holders are entitled to compensation.
- More information is available at: <https://www.tmr.qld.gov.au/Community-and-environment/Property-information>

LAND ACQUISITION

Land Parcel Severance

- The Project has made a commitment to work with landowners to reduce impacts (including severance issues), where possible.
- The *Planning Regulation 2017* contains exemptions for “reconfiguring a lot” where it relates to the acquisition of land under the ALA.
- The State does have powers to acquire additional land in instances where the Project leaves land severed from other land. Landowners are encouraged to talk to the Project in these situations.
- Any land acquired that is not required for the operating rail corridor will be reviewed as part of a future rationalisation process for surplus land.

LAND ACQUISITION

Land Rationalisation

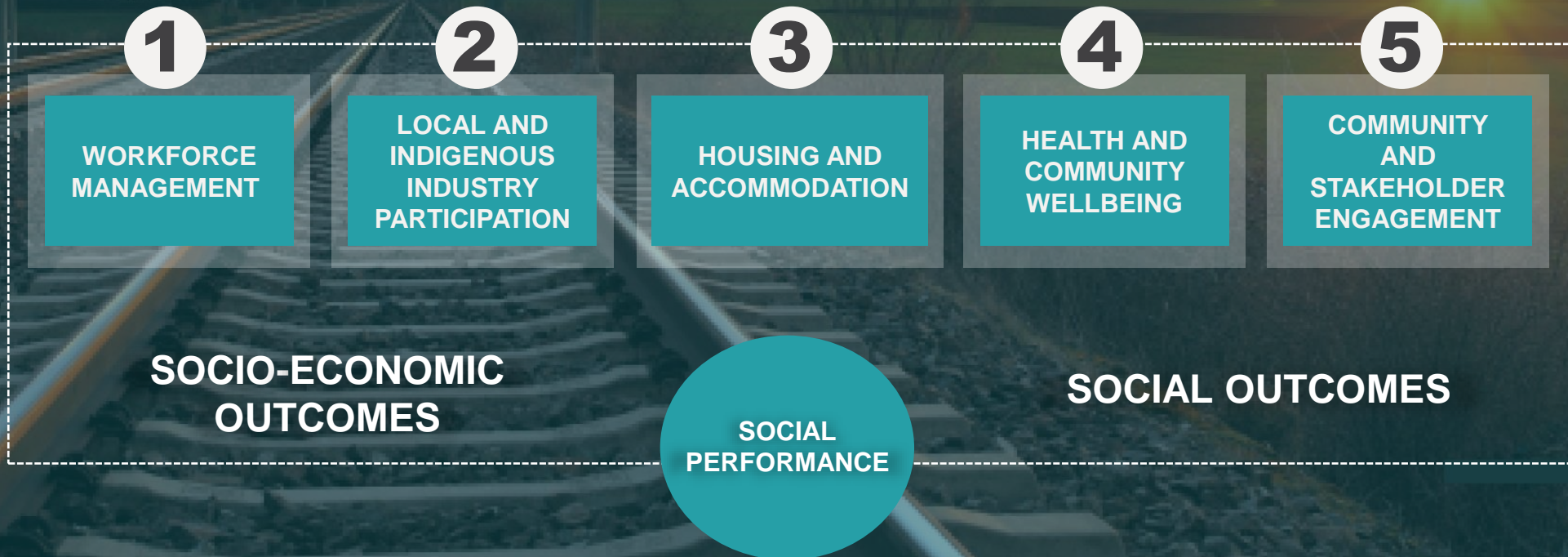
- ARTC and TMR will jointly agreed the rationalisation strategy for surplus land
- Surplus land is generally disposed of following establishment of the rail corridor.
- The sale of any surplus land will have regard to legislative requirements (offer backs), and TMR/ARTC policy position with generally the preferred method being sale to the open market.
- Factors to consider in determining the rationalisation approach include how the land was acquired, practical and legal access, parcel size, potential uses etc.

SOCIAL PERFORMANCE – COMMUNITY WELLBEING ACTIVITY

MYF JAGGER

SOCIAL PERFORMANCE PROGRAM

ARTC recognises its responsibility to deliver and operate Inland Rail with the least social impact possible, while enhancing the benefits Inland Rail will deliver to the people of Australia at both a local and national scale



C2K SOCIAL IMPACT ASSESSMENT

SIA consultation:

- Community & property owner engagement through series of community events and information sessions
- Community Consultative Committee
- Community Survey
- Council meetings (Scenic Rim/ Ipswich)
- SIA Workshops: Community / Social Infrastructure Providers / Government Agencies
- Meetings with Traditional Owners
- Meetings with business and industry stakeholders and organisations
- Continued input from Inland Rail Engagement Program
- Draft SIA Public Display & Submissions Process

SIA process:



SOCIAL PERFORMANCE - NEXT STEPS



ARTC

Maintain Social Performance program
Revise SIA for resubmission



ARTC/Proponent

Social Performance responsibilities being worked through with Regionerate Rail for Revised EIS & SIA.



ARTC/Proponent

Implement C2K Social Impact Management Plan when Revised EIS is approved



EIS

Social Impact Assessment (SIA)
Social Impact Management Plan (SIMP)



Refine

Planning and scoping



Plan and implement

Actions and activities for each of the five Social Performance areas

INTERACTIVE WORKSHOP

What is a Community Wellbeing Plan?

- 1 Avoid and minimise impacts that may affect community wellbeing, including mental health
- 2 Maximise communication and cooperation with local stakeholders to address social impacts, including focus on vulnerable group
- 3 Mitigate impacts on the amenity of schools, community facilities and parks

To participate in this activity online visit:
<https://forms.office.com/r/qK49yzYVy6>

Community Wellbeing Plan
Scoping Activity

The Community Wellbeing Plan includes initiatives that address impacts on quality of life, as the result of Project impacts on **amenity**, local character, **community cohesion**, **connectivity**.

Here are some initial ideas shared by stakeholders to date. Select the top three ideas by placing a sticker next to the idea. If you have a comment to make on the ideas pop it on a post-it note next to the idea.

Scoping Initiatives aligned to:

- AMENITY
- CHARACTER
- COHESION
- CONNECTIVITY

SCOPING IDEAS FROM STAKEHOLDERS	COMMUNITY SUPPORT	YOUR IDEAS ADD A POST-IT NOTE
Rosewood Community Hub (initial planning or program support)		Place notes here

Community Wellbeing Plan
Scoping Activity

Do you have new ideas to share? Add your idea to a post-it note and stick on this poster.

AMENITY CHARACTER

Community inputs to legacy benefits
Scoping Activity

ARTC | **INLAND RAIL**

- What would a positive legacy from Inland Rail look like in your community?
- Enhanced public spaces, such as parks or streetscapes?
 - Better physical or digital connectivity?
 - An increase in industry experience or skills?
 - Stronger community organisations or networks?
 - Lasting projects that support local industry strengths (e.g. tourism, logistics)?
 - Project facilities or infrastructure left for community use?

Add your idea to a post-it and add to this poster. Please provide as much detail as possible for example which area would you like to see this legacy? Your feedback will help shape Inland Rail's plans.

Place notes here

BREAK



10 minutes

PROJECT UPDATE

DON PIGGOTT-MCKELLAR

PROJECT UPDATE

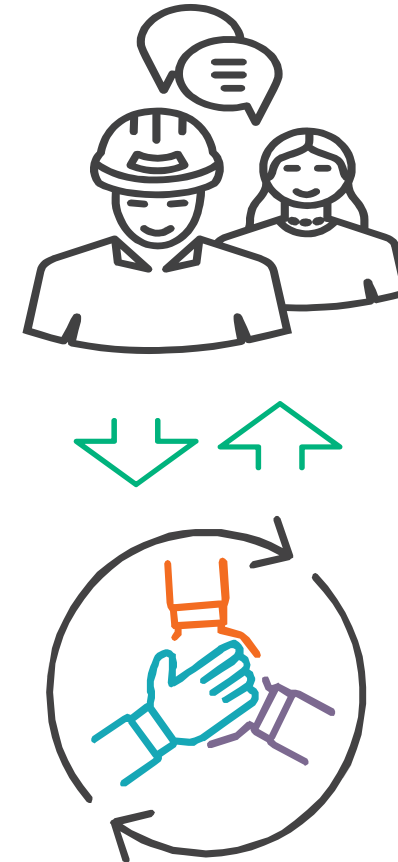
Environment Impact Statement (EIS)

- Updates ongoing to develop the revised draft EIS
- Ongoing engagement with the community and Federal / State / Local Governments
- Working on request for information from the Coordinator-General
- Formal second round of Public Consultation will follow in 2023
- Construction commencement will occur after EIS approval, and land resumption

PROJECT UPDATE – REGIONERATE RAIL

Engagement with Regionerate Rail (RR)

- Ongoing consultation between ARTC IR & RR
- ARTC IR introduce RR to the community
- Second round of Public Notification on revised draft EIS (2023)



INTERACTIVE SESSIONS

2-hour sessions with a short presentation by ARTC per topic, followed by Q&A and community led discussion/break out groups.

Interactive sessions	Proposed Date	Event details
Surface Water, Hydrology, Flooding, Groundwater	Saturday 26 March	Harrisville, 9 – 11am (Complete)
Flora & Fauna, Sustainability and Offsets	Thursday 28 April	Peak Crossing, 6 – 8pm (Complete)
Social Performance Business Opportunities	Wednesday 18 May	Ipswich, 5 – 7pm (Complete)
Ecology workshop	Saturday 30 July	Peak Crossing, 10 – 12pm (Complete)
Koala workshop	Thursday 18 August	Rosewood, 6 – 8pm
Social Performance Community Wellbeing activity and sausage sizzle	Saturday 10 September	Peak Crossing, 10 – 12pm
Traffic and Level Crossings	TBC	Peak Crossing
Noise and Vibration	TBC	Peak Crossing
Project Description – introduce Regionerate Rail to CCC and community members	TBC	TBC

WORKSHOP UPDATE – FLORA & FAUNA, SUSTAINABILITY AND OFFSETS

- Held at Peak Crossing on Thursday 28 April from 6 – 8pm
- 23 community members attended in-person, 9 external stakeholders attended online (32 attendees in total)

Key feedback provided by community members	ARTC response
Brush-tailed rock wallaby colony at the peak of Mt Welcome	Stakeholder identified the area and it will be added to the relevant documentation.
Frogs at Washpool/Ephemeral wetland/many frogs recorded in other areas of the alignment.	Consultants noted that the waterhole was dry during the surveys they undertook. They will undertake another survey re frogs in this area.
Additional ecology workshops requested (feedback received after the initial Flora & Flora, Sustainability and Offsets workshop was held)	<p>Stakeholders provided information regarding sightings of fauna, fauna movements during floods and other key information.</p> <p>A C2K koala workshop for the Koala Management Plan will also be held to engage with environmental groups and other key stakeholders to understand the current level of knowledge and awareness of koalas and threatening processes associated with the C2K project via local inputs.</p>

WORKSHOP UPDATE – SOCIAL PERFORMANCE / BUSINESS OPPORTUNITIES

- Held in Ipswich on Wednesday 18 May from 5 – 7pm
- 9 community members attended in person, 8 external stakeholders attending online (17 attendees in total)

Key feedback provided by community members	ARTC response
Indigenous training	Program Indigenous & Training Advisor will follow up with stakeholders regarding their feedback/enquiries and provide more information on training and work opportunities. Program Indigenous & Training Advisor to attend future Indigenous BBQ to discuss training/work opportunities.
Noise mitigation in Peak Crossing	ARTC is still working with Regionerate Rail on the design and EIS development and will work with impacted residents in Peak Crossing and along the alignment regarding anticipated noise impacts. Noise mitigation will be offered on a case-by-case basis where exceedances apply, including to residents in Peak Crossing.
Living in Place survey	The survey is an independent measure of community values. It is owned by a consultancy group (ID Consultancy) and will be administered across local government areas that Inland Rail traverses. It is a way for baseline data to be provided. Commitment to share the Living in Place survey programme with SRICCC members as well as the results, when available.

WORKSHOP UPDATE - ECOLOGY

- Held in Peak Crossing on Saturday 30 July from 10 – 12pm.
- 11 community members attended in person with 2 external stakeholders attending online (13 attendees in total).
- Attendees were issued maps and forms to fill out and assist the project team with additional information/feedback during the workshop. This information is being reviewed with some forms still pending.
- Healthy Land and Water provided good context on their Koala Rehabilitation Program in Scenic Rim (Teviot Range).
- Identification of Quolls in proximity to project area – by Quoll Seekers Network.
- Landowners provided information on key fauna sightings and movements.

GENERAL BUSINESS

- Round Two 2022 successful applicant – Queensland Pioneer Steam Railway for their sleeper upgrade project.
- Sponsorships and Donations – current round opened 1 August, closes 31 October 2022: <https://inlandrail.artc.com.au/opportunities/sponsorships-and-donations/>
- Date for next SRICCC meeting.
- Cultural Awareness training for CCC members to be held prior to the next CCC meeting.

OBSERVER QUESTIONS

CONFIRMATION OF ACTIONS

THANK YOU

ARTC

INLAND
RAIL 
An Australian Government Initiative