



# The Inland Rail Skills Academy



Excellence in collaboration, learning and delivery



## What is Social Performance?

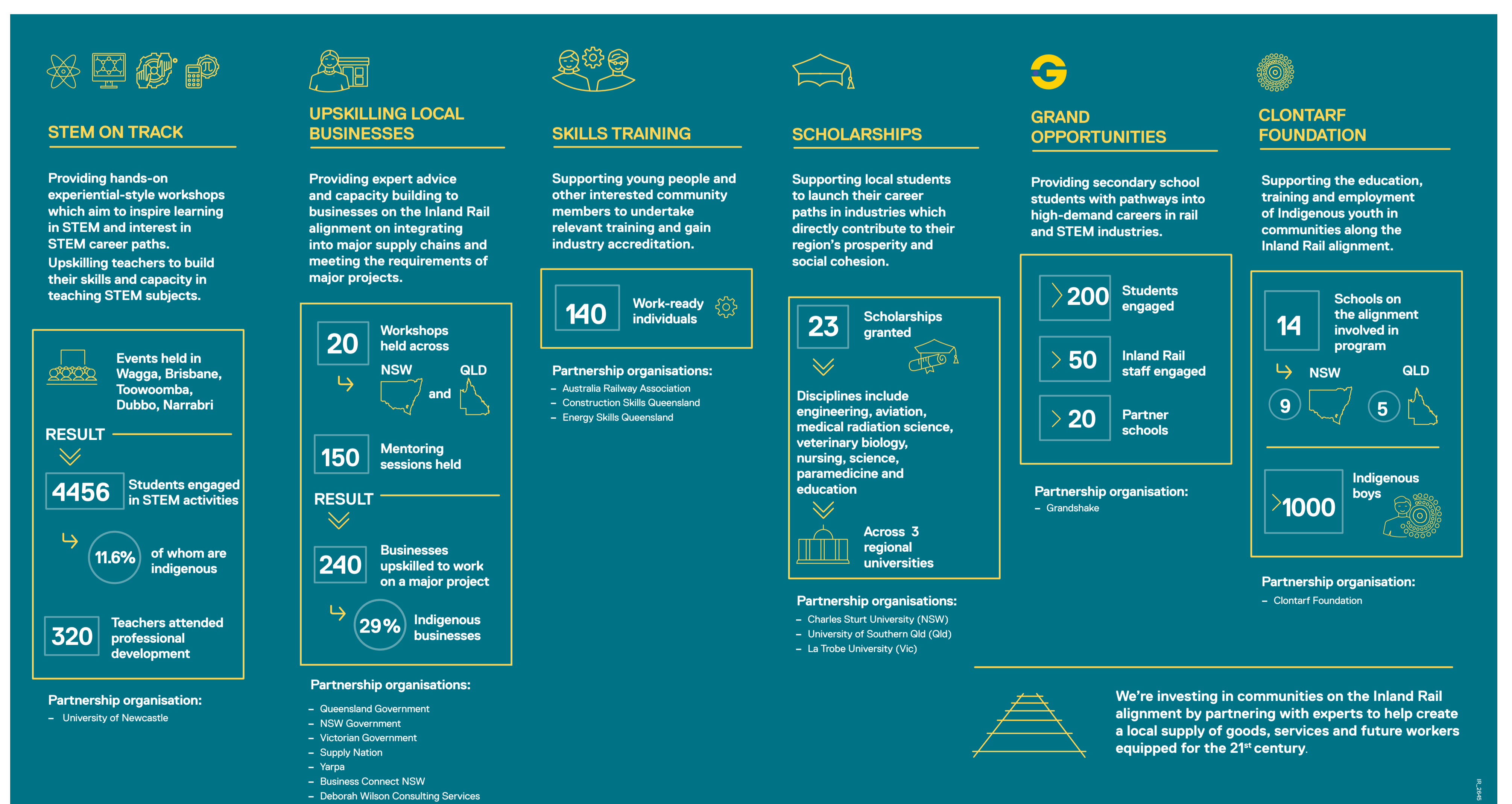
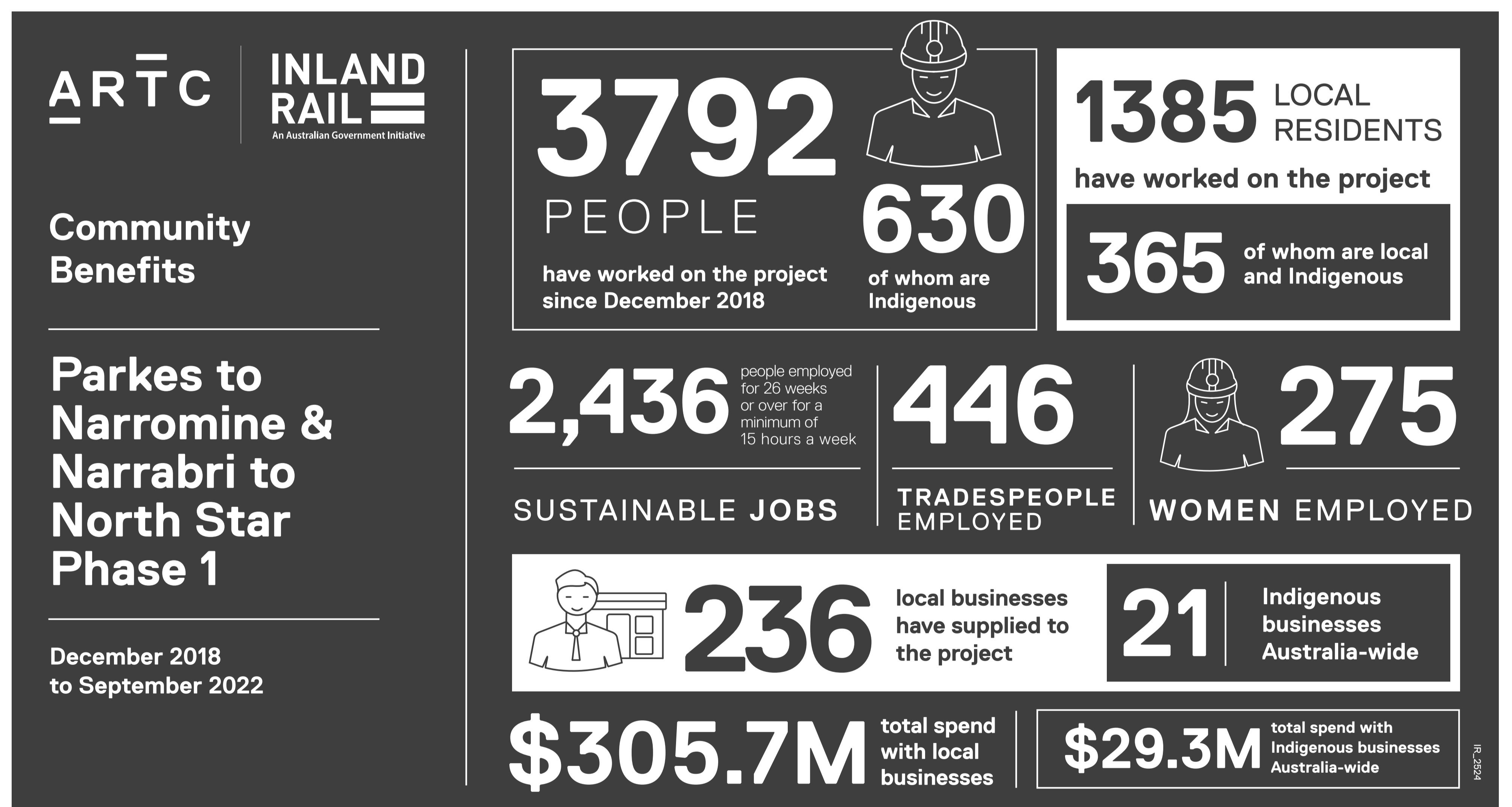
Social performance describes how we maximise the benefits to communities during the planning, construction, and operation of Inland Rail, whilst minimising disruption at every opportunity. Social performance focuses on five pillars – workforce management, industry participation, housing and accommodation, community health and wellbeing, and communication and stakeholder engagement.

Inland Rail will continue to benefit regional communities by providing job opportunities for local residents, regional communities, and First Nations people, contributing to building skills in the communities along our alignment and supporting local businesses. Inland Rail is committed to:

- providing local employment opportunities where possible
- working with local communities (including First Nations communities) to strengthen the capacity of the local workforce, encouraging participation in Inland Rail
- working with all levels of government to provide long-term outcomes through training, mentoring and other support programs
- working with schools and local training providers to provide appropriate training, and having a clear and efficient process for people to seek information about employment opportunities and register their interest in Inland Rail.

## The Inland Rail Skills Academy

The Inland Rail Skills Academy (the Academy) partners with education and training providers to deliver programs that upskill local people and businesses. Through the Academy, Inland Rail is creating opportunities, during construction, for the communities and regions along the alignment, including training and skills development, education, and employment. Partnerships with the Clontarf Foundation and regional universities (amongst others) have created tangible connections to supply of labour for skilling and employment opportunities.



### Authors

Jane Roberts, Program Social Investment and Inland Rail Academy Principal, ARTC Inland Rail  
Peta Tucker, Social Performance Manager, ARTC Inland Rail

[inlandrail.com.au](http://inlandrail.com.au)