

ARTC

INLAND
RAIL
An Australian Government Initiative



GOWRIE TO CALVERT COMMUNITY CONSULTATIVE COMMITTEE MEETING

18 April 2023

AGENDA

1. **Introductions, welcome and apologies, conflicts of interest, Welcome to Country**
2. **Actions from previous meeting**
3. **Cultural Heritage**
4. **Mayoral update - Ipswich City Council**
5. **Inland Rail Review**
6. **EIS update**
7. **Project updates (incorporating G2H and H2C)**
8. **Land acquisition process**
9. **Stakeholder Engagement (G2H and H2C)**
10. **Social Performance**
11. **Community Wellbeing Plan and Legacy Scoping Activity**
12. **General business**
13. **Observer questions**
14. **Conclusion, confirmation of actions, meeting close**

ACKNOWLEDGEMENT OF COUNTRY

Inland Rail acknowledges the Traditional custodians of the land on which we work, and pays our respects to Elders past and present.



ACTIONS FROM PREVIOUS MEETING

ACTION:

1. Social Impact Assessment sub plans (part of Social Impact Management Plan) – CLOSED (addressed tonight)
2. Community Wellbeing Plan and Legacy Scoping Activity – CLOSED (addressed tonight)
3. Supply chain/ ICN Gateway information – DEFERRED to next meeting
4. Overall delivery strategy and Tier 1 contractors – DEFERRED to next meeting



CULTURAL HERITAGE

Donna Cannon

Cultural Heritage Manager

ABORIGINAL CULTURAL HERITAGE

- Cultural Heritage in the project area is managed in accordance with approved Cultural Heritage Management Plans (CHMPs) that the Yuggera Ugarapul People (YUP) and the Western Wakka Wakka People (WWW) have developed with Inland Rail.
- ARTC has met recently with both YUP and WWW to discuss upcoming works for 2023:
 - Early Works Surveys – geotechnical and soil investigations
 - Project Activities Surveys – additional and remaining areas
 - Mitigation activities

CULTURAL HERITAGE TEAM

Selina Nalatu
Senior Cultural Heritage Advisor
0428 186 301
SNalatu@ARTC.com.au

Donna Cannon
Cultural Heritage Manager
0408 606 729
DCannon@ARTC.com.au

MAYORAL UPDATE IPSWICH CITY COUNCIL

Teresa Harding

Mayor, Ipswich City Council

INLAND RAIL CHALLENGES AND OPPORTUNITIES

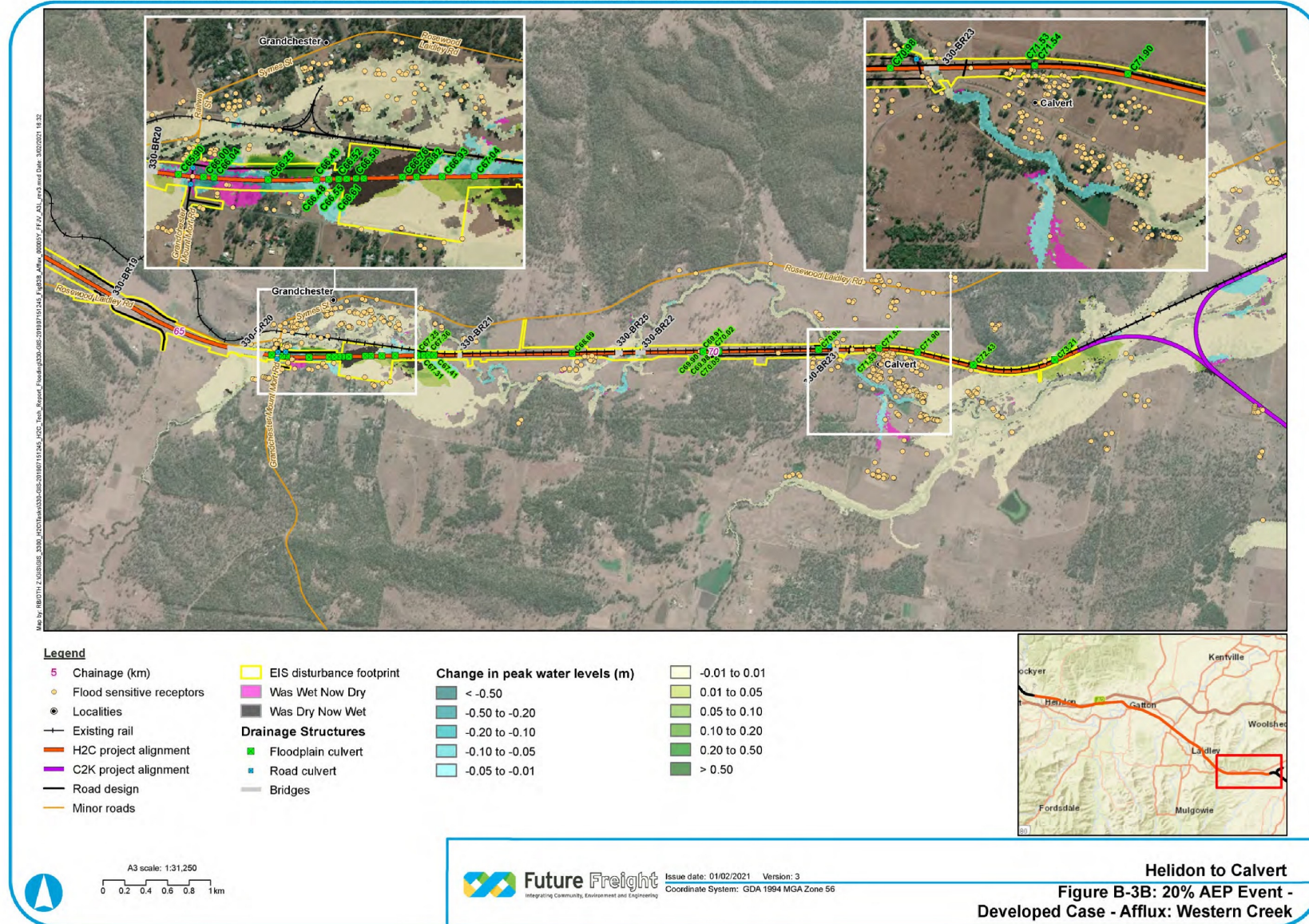
18 April 2023

Inland Rail in Ipswich



Community concerns

Service Layer Credits: Source: Esri, Maxar, GeoEye, Earthstar Geographics, CNES/Airbus DS, USDA, USGS, AeroGRID, IGN, and the GIS User Community
 Sources: Esri, HERE, Garmin, USGS, Intermap, INCREMENT P, NRCan, Esri Japan, METI, Esri China (Hong Kong), Esri Korea, Esri (Thailand), NGCC, (c) OpenStreetMap contributors, and the GIS User Community



Waste in Ipswich

42%

of
Queensland's
waste



55%

of the
South-East's
waste



94%

is Commercial &
Industrial and
Construction & Demolition
non-household waste



20,000

complaints to
Odour Abatement
Taskforce



VISION FOR IPSWICH-BRISBANE FREIGHT TUNNEL

Underground idea could be a rail hit

EXCLUSIVE

MADURA McCORMACK

PRECIOUS freight could be transported to and from the Port of Brisbane via an underground tunnel stretching all the way out to Ipswich under a visionary plan by former Thies boss Martin Albrecht.

And the bid to solve the \$14.5bn Inland Rail missing link could be a game-changer for



Martin Albrecht, Ross Vasta

Inland Rail's freight movements from Melbourne to Brisbane, PortConnex provides the final missing link to the Port of Brisbane, offering removal of double-track

structure Minister Barnaby Joyce, as well as with state authorities.

The pitch comes at a time when the end destination of Inland Rail or how it will get from Gowrie to Brisbane is not yet locked in.

The federal government's investment of up to \$14.5bn will upgrade 1100km of track along the existing rail route and the full investment of \$20.5bn of

prosperous, liveable and sustainable future for generations to come, ensuring the once-in-a-century opportunity to host the 2032 regional Olympics can be realised," he said.

"The focus in 2032 will be on technological innovation and best practice, rather than congestion and poor planning," he added.

The \$21.5bn investment

Thank you

INLAND RAIL REVIEW

Department of Infrastructure, Transport,
Regional Development, Communications
and the Arts



Australian Government

**Department of Infrastructure, Transport,
Regional Development, Communications and the Arts**

The Delivery of Inland Rail: An Independent Review

- On 6 April 2023 the Government released its response to the independent review of the delivery of the Inland Rail program conducted by Dr Kerry Schott AO.
- Dr Schott's report and the Government's response to her recommendations can be accessed on line at www.inlandrail.gov.au



EIS UPDATE

Fleur McPherson

EIS Technical Lead, Gowrie to Kagaru

EIS UPDATE

- Existing case flood models updated in response to Expert Panel Report
- Completed baseline ecological surveys in Helidon to Calvert
- Additional noise monitoring to inform baseline conditions required following wilful damage to equipment
- Drafting of updated reports continues building on lessons from Border to Gowrie and Calvert to Kagaru revised draft EISs.

PROJECT UPDATES - GOWRIE TO HELIDON & HELIDON TO CALVERT

Max Nichols

Area Director, Gowrie to Kagaru

GOWRIE TO HELIDON PROJECT

- Regionerate Rail is currently performing following the activities to inform their design:
 - *Ecology Survey*
 - *Utilities Investigation*
 - *Geotechnical borehole drilling*
- Independent Verifier appointed
- Utility relocation work in the InterlinkSQ site is progressing and nearing completion.



GOWRIE TO HELIDON PROJECT

- Studies being undertaken to inform the EIS include:
 - Monthly surface water monitoring
 - Surface water sampling
 - Quarterly ground water monitoring
 - Ground water monitoring, accessing existing bores
 - Noise monitoring
 - Geomorphology survey
 - Soils investigations (G2H & H2C)
 - European Cultural Heritage.



HELIDON TO CALVERT PROJECT

- EIS tranche 2 being finalised for submission to the Office of the Coordinator-General
- Grade change at Little Liverpool
- Little Liverpool rail connection with QR
- Crossover and turnout reduction (prioritisation of the Inland Rail route).



LAND ACQUISITION

Amanda Reed

Property Access & Acquisition Manager QLD

LAND ACQUISITION PROCESS

Who will acquire or resume the land required for Inland Rail?

- The Department of Transport and Main Roads (TMR) is the acquiring authority for the Queensland section of Inland Rail and will manage the compulsory land acquisition process set out in the *Acquisition of Land Act 1967* legislation.

When will land be acquired or resumed?

- Compulsory land acquisition for the rail corridor will only occur after the Environmental Impact Statement is final and the Coordinator-General has provided an evaluation report.

LAND ACQUISITION PROCESS

Compulsory Land Acquisition Process

- Following relevant approvals, ARTC will request TMR compulsory acquire required land (that has not already been acquired).
- Each impacted landowner will be consulted to be made aware of the land requirements, and their rights and entitlements under the acquisition process.
- TMR will adhere to the land acquisition process as set out in the ALA, including providing landowners with a Notice of Intention to Resume, objection rights, and should the acquisition go ahead, a Taking of Land Notice. Should land be taken under this process, then interest holders are entitled to compensation.
- More information is available at: <https://www.tmr.qld.gov.au/Community-and-environment/Property-information>

LAND ACQUISITION PROCESS

Compensation

- Eligibility for compensation – compensation can be claimed if you have a legal interest in the land taken e.g. if you are the owner or have other legal interest in the land e.g. a lease.
- Compensation claims – to be lodged with TMR following the taking of land gazettal, application for payments as an advance against compensation can be made, with the final claim settled at a later date.
- Compensation assessment – assessment is based on market value of the property (or interest), plus any loss in value due to severance and/or injurious affection to other land, plus disturbance costs (e.g. legal, valuation or other professional fees, storage and removal costs).
- Settlement – an offer of compensation will be made following TMR consideration of the claim, if agreement on compensation cannot be reached, either part can refer the matter to the Land Court.
- Title correction – a survey of the resumed land will be undertaken to show the new boundaries, no cost to landowners.

LAND ACQUISITION PROCESS

Land Rationalisation

- ARTC and TMR will jointly agree the rationalisation strategy for surplus land.
- Surplus land is generally disposed of following establishment of the rail corridor.
- The sale of any surplus land will have regard to legislative requirements (offer backs), and TMR/ARTC policy position with generally the preferred method being sale to the open market.
- Factors to consider in determining the rationalisation approach include how the land was acquired, practical and legal access, parcel size, potential uses etc.

STAKEHOLDER ENGAGEMENT GOWRIE TO HELIDON & HELIDON TO CALVERT

Kim Wheatley

Stakeholder Engagement Lead, Gowrie to Helidon

ENGAGEMENT UPDATE

Recent engagement for G2H and H2C:

- Meetings with tourism and accommodation providers
- Meetings with schools along the alignments
- Meetings with new landowners in Gowrie Junction, Laidley and Helidon

Recent events:

- Grandchester consultation (H2C), 15 March
- Social and Sustainability EIS Workshop (G2H), 16 March
- Laidley street markets (H2C), 24 March
- Toowoomba Show (G2H), 30 March through to 1 April



ENGAGEMENT UPDATE

Upcoming engagement events:

- Flora and Fauna EIS workshop (combined G2H and H2C)
Wednesday 19 April, 6-8pm
Murphys Creek Community Centre
- Social Performance and Sustainability EIS workshop (H2C)
Thursday 27 April, 6-8pm
Lockyer Valley Cultural Centre, Gatton
- Laidley RSL markets
Saturday 29 April, 7am – 12pm
- Forest Hill consultation
Wednesday 3 May, 9am – 3pm



SOCIAL PERFORMANCE

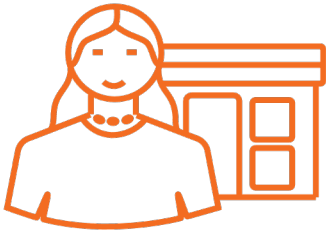
Myf Jagger

Social Performance Principal QLD

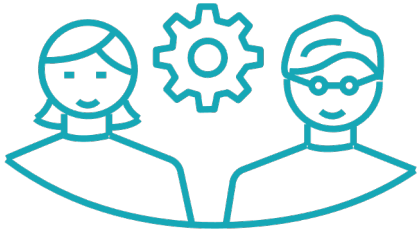
SOCIAL PERFORMANCE IN THE G2C AREA – CURRENT SKILLS ACADEMY PROGRAMS



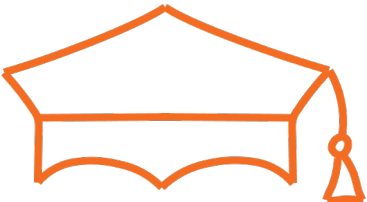
STEM on Track



Upskilling local businesses



Skills training



Scholarships



Grand Opportunities



Clontarf Foundation

SOCIAL IMPACT MANAGEMENT PLAN (SIMP) - SOCIAL OUTCOME MONITORING

*Examples from Draft H2C SIA Housing & Accommodation and Community
Health & Wellbeing sub-plans*

SOCIAL IMPACT ASSESSMENT REFERENCES

Helidon to Calvert Social Impact Assessment

(released 31 Mar 2021):

https://www.statedevelopment.qld.gov.au/data/assets/pdf_file/0031/52789/Q_Social.pdf

Gowrie to Helidon Social Impact Assessment

(released 2 August 2021):

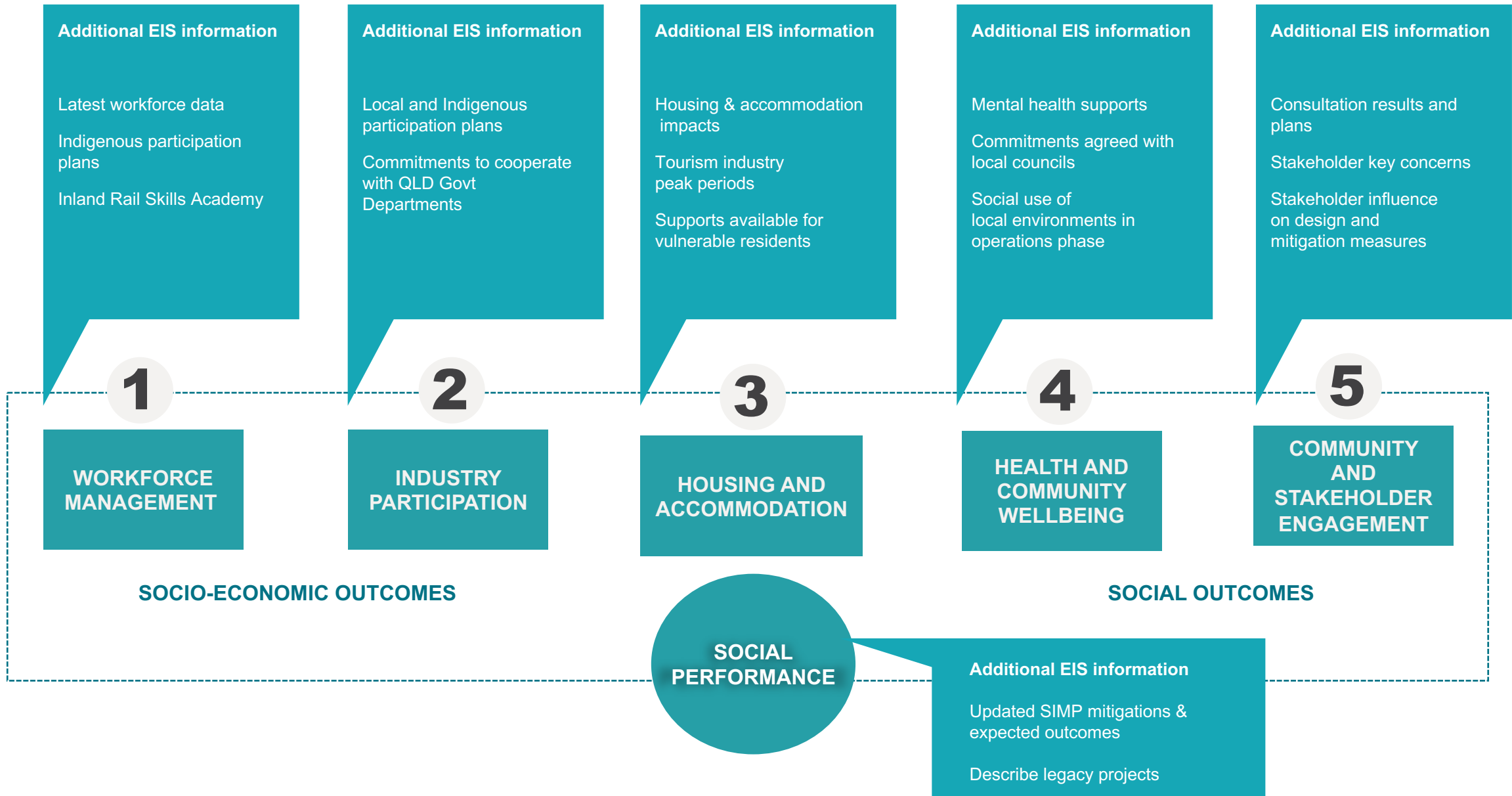
https://eisdocs.dsdp.qld.gov.au/Inland%20Rail%20Gowrie%20to%20Helidon/draft-EIS/Q_Social-Impact-Assessment.pdf

H2C Social Impact Management Plan sections:

- Community & Stakeholder Engagement – Section 8.2, Page 261
- Workforce Management – Section 8.3, Page 290
- Housing & Accommodation – Section 8.4, Page 299
- Health & Community Wellbeing – Section 8.5, Page 307
- Local Business & Industry Participation – Section 8.6, page 319
- Monitoring, reporting and review – Section 8.7, Page 329

G2H Social Impact Management Plan sections:

- Community & Stakeholder Engagement – Section 8.2, Page 258
- Workforce Management – Section 8.3, Page 288
- Housing & Accommodation – Section 8.4, Page 297
- Health & Community Wellbeing – Section 8.5, Page 303
- Local Business & Industry Participation – Section 8.6, page 316
- Monitoring, reporting and review – Section 8.7, Page 324



SOCIAL OUTCOME MONITORING

ARTC

INLAND
RAIL
An Australian Government Initiative

Workforce Management

1

Industry Participation

2

Discussed at
previous meeting

Housing &
Accommodation

3

Community Health &
Wellbeing

4

Discuss at this
meeting

Stakeholder
Engagement

5

Discuss at next
meeting

MONITORING SOCIAL OUTCOMES – PERFORMANCE MEASURES

Housing & Accommodation

- ✓ **# local residents displaced** from housing due to Project increases in housing demand
- ✓ All **directly impacted DTMR tenants** have access to **support to relocate** and re-establish social networks
- ✓ Mitigation measures implemented if Project contributes to **loss of available tourism or seasonal workers' accommodation** in the Lockyer Valley LGA
- ✓ **Local accommodation providers** used for short-term workforce accommodation where desirable
- ✓ Corrective actions implemented if **negative trends in housing and accommodation availability** are attributed to cumulative Inland Rail impacts

Community Health & Wellbeing

- ✓ **# complaints** about noise and dust
- ✓ Landowners and tenants in and adjacent to the disturbance footprint have **access to timely Project information** and a Project contact
- ✓ Support provided to all **residents who would need to relocate** from the disturbance footprint (if required)
- ✓ **# people accessing mental health service** provided by PHN partnership
- ✓ **Increased support for mental health/other services** implemented if needed
- ✓ Impacted **community facilities maintain availability** of activities, events and networks and **are supported to enhance** amenity and/or functionality
- ✓ Confirmation from **health and emergency services** that advice and **cooperative arrangements are adequate**, including measures to manage any **changes to emergency vehicle response rates**
- ✓ **#, financial value and outcomes of community partnerships** and programs in potentially impacted communities
- ✓ Benefits for local community provided by **Community Donations and Sponsorship-funded projects**

**Summaries only – see Project Social Impact Assessments for full detail*

COMMUNITY WELLBEING PLAN AND LEGACY SCOPING ACTIVITY

Myf Jagger

Social Performance Principal QLD

INTERACTIVE ACTIVITY

What is a Community Wellbeing Plan?

- 1 Avoid and minimise impacts that may affect community wellbeing, including mental health
- 2 Maximise communication and cooperation with local stakeholders to address social impacts, including focus on vulnerable group
- 3 Mitigate impacts on the amenity of schools, community facilities and parks

Community Wellbeing Plan Scoping Activity ARTC INLAND RAIL

The Community Wellbeing Plan includes initiatives that address impacts on quality of life, as the result of Project impacts on amenity, local character, community cohesion

Scoping Initiatives aligned to:

Here are some initial ideas shared by stakeholder
Select the top three ideas by placing a sticker
If you have a comment to make on the ideas p

SCOPING IDEAS FROM STAKEHOLDERS	COMMUNITY SUPPORT
Rosewood Community Hub (initial planning or program support)	
Support for local community/tourism events	
Land / environment projects (linking skills and training opportunities)	
Art installation / signage reflecting local or Aboriginal heritage	
Peak Crossing community - coordinated strategy for projects / investment	
Peak Mountain View Park enhancements (equipment, skatepark/youth space, story board projects)	
Ipswich to Boonah Trail upgrades/missing links	
Improvement to green spaces / parks	
Cycle paths / Bikeway extensions and improvements	

Community Wellbeing Plan Scoping Activity ARTC INLAND RAIL

Do you have new ideas to share? Add them here

AMENITY

Community inputs to legacy benefits Scoping Activity ARTC INLAND RAIL

What would a positive legacy from Inland Rail look like in your community?

- Enhanced public spaces, such as parks or streetscapes?
- Better physical or digital connectivity?
- An increase in industry experience or skills?
- Stronger community organisations or networks?
- Lasting projects that support local industry strengths (e.g. tourism, logistics)?
- Project facilities or infrastructure left for community use?

Add your idea to a post-it and add to this poster. Please provide as much detail as possible for example which area would you like to see this legacy? Your feedback will help shape Inland Rail's plans.

Place notes here

COHESION

GENERAL BUSINESS

OBSERVER QUESTIONS / GENERAL DISCUSSION

CONCLUSION AND CONFIRMATION OF ACTIONS

ARTC

INLAND
RAIL

Thank you