

# Narromine to Narrabri

The Narromine to Narrabri (N2N) project comprises 306km of new rail corridor and track. When complete, it will enable freight trains to connect with the section of Inland Rail under construction between Narrabri and North Star and the Parkes to Narromine section that is already complete and supports freight transport to Adelaide and Perth.



## New mobile towers boost reception for two local communities

Two new mobile network towers are bringing better coverage and more reliable service to communities in the Narromine and Warrumbungle shires.

The 50-metre towers, funded by Inland Rail, will facilitate train system connectivity once Inland Rail is operational and improve community coverage.

Mobile users should see improved service quality near Kickabil, from the tower on Cobboco Road, close to Collie Road. The second tower, near Mount Tenandra on Box Ridge Road near National Park Road, should also deliver better depth of coverage and performance for the area.

Both tower upgrades will help families and friends feel safer and more connected and support improved productivity and safety on farms.

Both towers are fitted with 5G-capable antennae, enabling local homes and businesses to receive 5G services without additional future network upgrades.



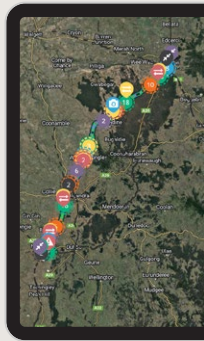
Recently installed 50m mobile tower at Mount Tenandra

Through initiatives like this, Inland Rail is realising benefits from regional development and leaving a long-term positive legacy for communities along the alignment.

As the mobile telecommunication enhancements are rolled out along the Inland Rail alignment, Telstra will manage ongoing operations and maintenance.

## Check out our updated Interactive Online Map

View the detailed map of the N2N alignment and all the features of the rail corridor. The new map incorporates design refinements informed by feedback from the Environmental Impact Statement public exhibition process. It also includes new visualisations to show you what level crossings, bridges and viaducts will look like when they're built.



For more information visit [inlandrail.info/N2Nmap](http://inlandrail.info/N2Nmap)



Visualisation of the bridge over Yarrie Lake Road, Narrabri

## Pop by and see us!

Our community shopfront remains open every weekday, at 85 Maitland Street, Narrabri. We would love to update you on the latest Inland Rail developments and answer any questions you may have.



Inland Rail Narrabri office

## Completion of Narrabri to North Star Phase 1 major works around the corner

Engineers and construction crews are applying the finishing touches to the northern sections of the Narrabri to North Star Phase 1 (N2NS P1) alignment. Meanwhile, landscaping works continue along the whole route in preparation for completion of Trans4m Rail's construction contract.

The line between Narrabri and Moree has been operational since November last year and the section between Camurra and North Star will soon be back in service after being in construction since March 2021. We urge residents and visitors to the area to be extra vigilant around the rail line and at level crossings.



Upgraded passive level crossing north of Moree

### Did you know?

Safety is being improved at 57 level crossings along the N2NS P1 project alignment. This includes upgrading 10 public level crossings from passive to active – meaning they will now have boom barriers, bells and flashing lights.

All crossings will get bigger and brighter signage (see above), upgraded road approaches and new rubber crossing panels, which reduce the time it takes for a vehicle to traverse the level crossing.

Inland Rail utilises a consistent safety-based approach for determining public level crossing treatments. This includes a national system called the Australian Level Crossing Assessment Model (ALCAM) which considers factors including road and rail traffic numbers, vehicle types, speeds, and sighting distances.



Example of machinery used during geotechnical investigations

## In the field – site investigations

From October 16, we'll continue geotechnical investigations (GI) to help us understand ground conditions and assist in refining the project's design. Inland Rail engineers and ecologists will accompany crews from our GI contractor Macquarie Geotech to locations along the alignment in Narrabri.

### 🕒 Work hours

Work will occur between 7am and 6pm Monday to Saturday, and every second Sunday between 16 October and 13 December 2023. Work will happen every day for 10 days followed by a four-day break.

### 👁️ What you will see

Clearing of isolated areas to enable access to site locations. Site supervision vehicles, mobile machinery, drill rigs and equipment accessing and operating on site. Traffic management when required.

As always we will maintain regular contact with impacted landowners and affected residents. Please call our Community Infoline with any questions on **1800 732 761**. For more info go to [inlandrail.info/N2NGI2023](http://inlandrail.info/N2NGI2023).

## New Inland Rail subsidiary and Board directors

The Australian Government has established Inland Rail Pty Ltd, a new subsidiary of Australian Rail Track Corporation and appointed a new Chair and five board members to oversee the building of Inland Rail in partnership with regional communities.

These announcements are a significant milestone for Inland Rail and will help the new subsidiary focus on project delivery with improved agility and efficiency.

For more information visit [inlandrail.artc.com.au/inland-rail-a-new-way-forward](http://inlandrail.artc.com.au/inland-rail-a-new-way-forward)



## Approvals update

Since our last update in July, we've continued liaising with the Commonwealth Department of Climate Change, Energy, the Environment and Water (DCCEEW) as part of the Australian Government's assessment of the project under the *Environment Protection and Biodiversity Conservation Act 1999*.

We've also progressed developing the various management plans, sub-plans and protocols that address the NSW Government's conditions of approval. Surveys and investigations to support secondary approvals include cultural heritage field surveys; ecology field surveys; water quality monitoring; air quality monitoring and construction water investigations.

**Want to know more?** We are committed to working with property owners, communities, state and local governments as a vital part of our planning and consultation work, and we value your input. If you have any questions or comments, please let us know.

**p** 1800 732 761  
**e** [inlandrailnsw@artc.com.au](mailto:inlandrailnsw@artc.com.au)  
**w** [inlandrail.com.au/n2n](http://inlandrail.com.au/n2n)