



# Narwonah Material Distribution Centre

Inland Rail has identified a requirement for two material distribution centres to service the stockpiling and future installation of ballast, sleepers, rail turnouts and other materials along the Inland Rail alignment. Narwonah, near Narromine, has been selected as the location for the southern material distribution centre.

The 200-hectare facility is located adjacent to the existing Hunter Valley main line, approximately 8km south of the Narromine township (see map over page). Australian-owned company Martinus has been awarded a contract to deliver these works.

## Key features

Key features of the temporary facility include:

- Ballast stockpile
- Sleeper and other precast concrete product stockpile
- Rail stockpile
- Sleeper and rail handling gantries
- Turnout storage
- Area to prepare and weld rail
- Rollingstock provisioning and maintenance facilities
- General construction laydown and container storage.

## Environmental assessment

Development of the Narwonah Material Distribution Centre, including environmental approvals, is being progressed separately to the Narromine to Narrabri section of Inland Rail.

In 2022, Inland Rail prepared a Review of Environmental Factors (REF) to assess the impacts of the Narwonah Material Distribution Centre.

The REF was placed on public display in May 2022. During this time, the community had the opportunity to make a submission about the project to the Australian Rail Track Corporation (ARTC) to consider in its assessment of the project.

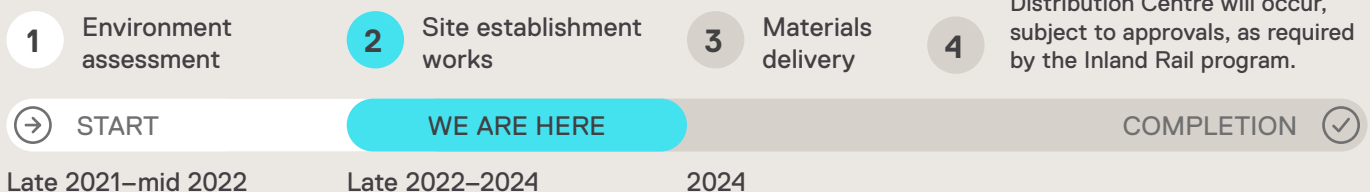
The REF was approved in June 2022 and construction of the Narwonah Material Distribution Centre started in September 2022.

## Hours of operation for construction

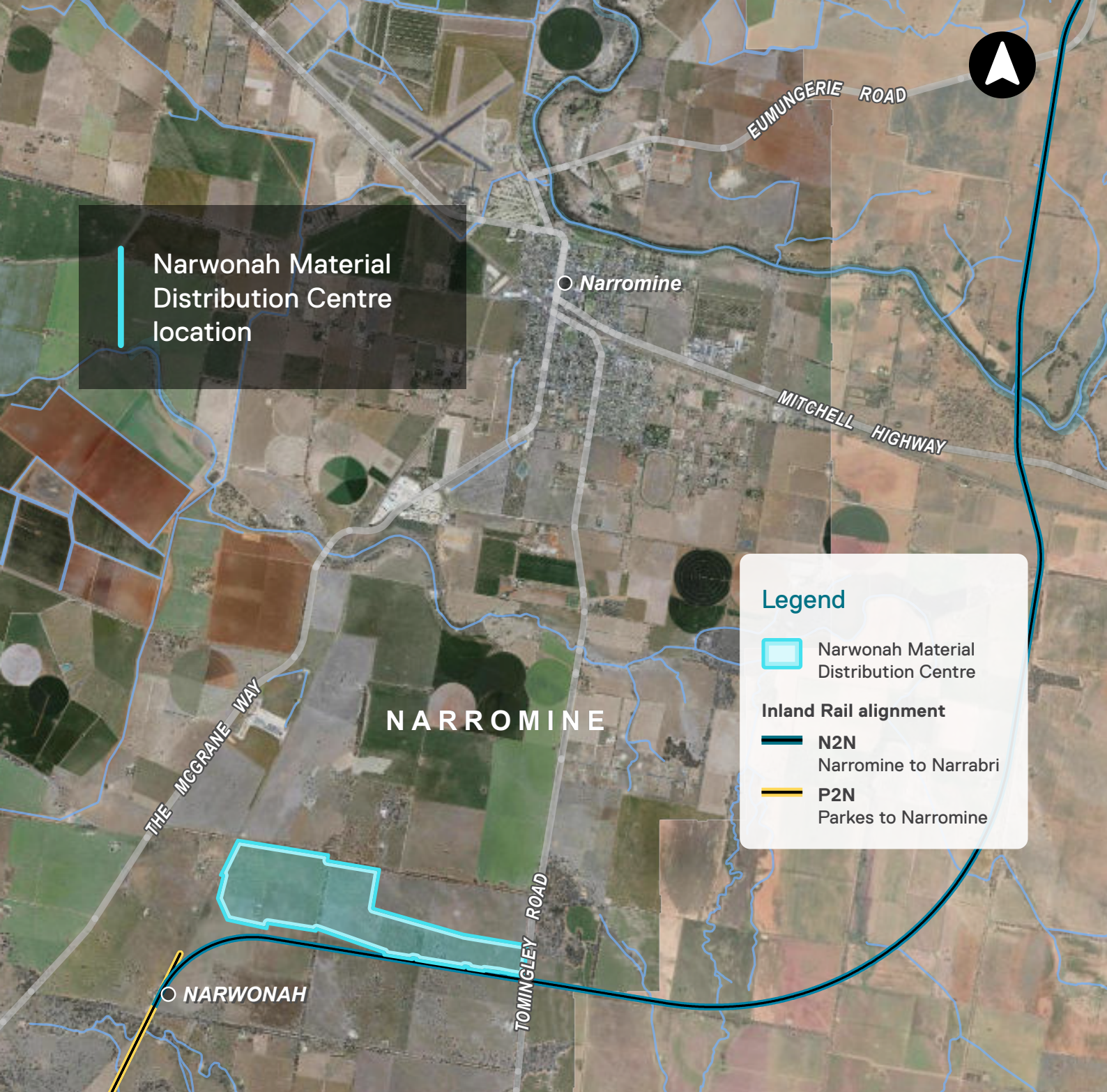
During the site establishment phase, work will be carried out between 6am and 6pm, up to seven days per week.

If out-of-hours work is required, prior notification will be provided to nearby residents.

## ---🕒 Project timeline






\* Timeframes are indicative and are subject to change



Narwonah Material Distribution Centre location

### Legend

-  Narwonah Material Distribution Centre
- Inland Rail alignment**
  -  **N2N**  
Narromine to Narrabri
  -  **P2N**  
Parkes to Narromine



### Have your say

Please contact the stakeholder engagement team on **1800 732 761** or email [inlandrailnsw@artc.com.au](mailto:inlandrailnsw@artc.com.au) if you have any questions or feedback about the Narwonah Material Distribution Centre.



### Want to know more?

Inland Rail is committed to working with landowners, communities, state and local governments as a vital part of our planning and consultation work, and we value your input. If you have any questions or comments, please let us know.