

Albury to Illabo Site investigations (extension) – Edmondson Street, Wagga Wagga 23 March to 30 April 2024

Martinus Rail will undertake site investigations on the Edmondson Street bridge, from 23 March 2024 to 30 April 2024. The works were due to be completed by mid-March but due to unforeseen circumstances the timing has had to be extended.

These investigations are to identify and locate utilities and does not mean approval has been given for major construction to begin on the Albury to Illabo section.

The site investigations will occur during normal construction hours of 7am to 6pm Monday to Friday, and 8am to 1pm on Saturdays.

The investigations at will involve boreholes and other groundworks and may sometimes be noisy.

Works to be undertaken

- Utilities investigations involving potholing and use of a vacuum truck
- Geotechnical investigations using a drill rig

Vehicle movements

During the works, vehicle movements will be limited to moving equipment on and off the sites. There will be some impact with a temporary, partial road closure on Edmondson Street.

Traffic controllers will be available to direct traffic where needed.

- Survey and testing equipment operating will be on-site within and outside the rail corridor during the hours noted above
- Some of these works may be noisy. You may hear truck engines and engine noise from machines such as the drill rig used to make the test holes.
- Use of non-tonal reversing alarms on all equipment and turning off equipment when not in use
- Instructing workers to keep noise to a minimum and being respectful of our neighbours.

Machinery used

Equipment used for work includes but is not limited to hand tools, excavators, vacuum trucks, elevated work platform, track machines, drill rigs, heavy and light vehicles.

How we're managing impacts

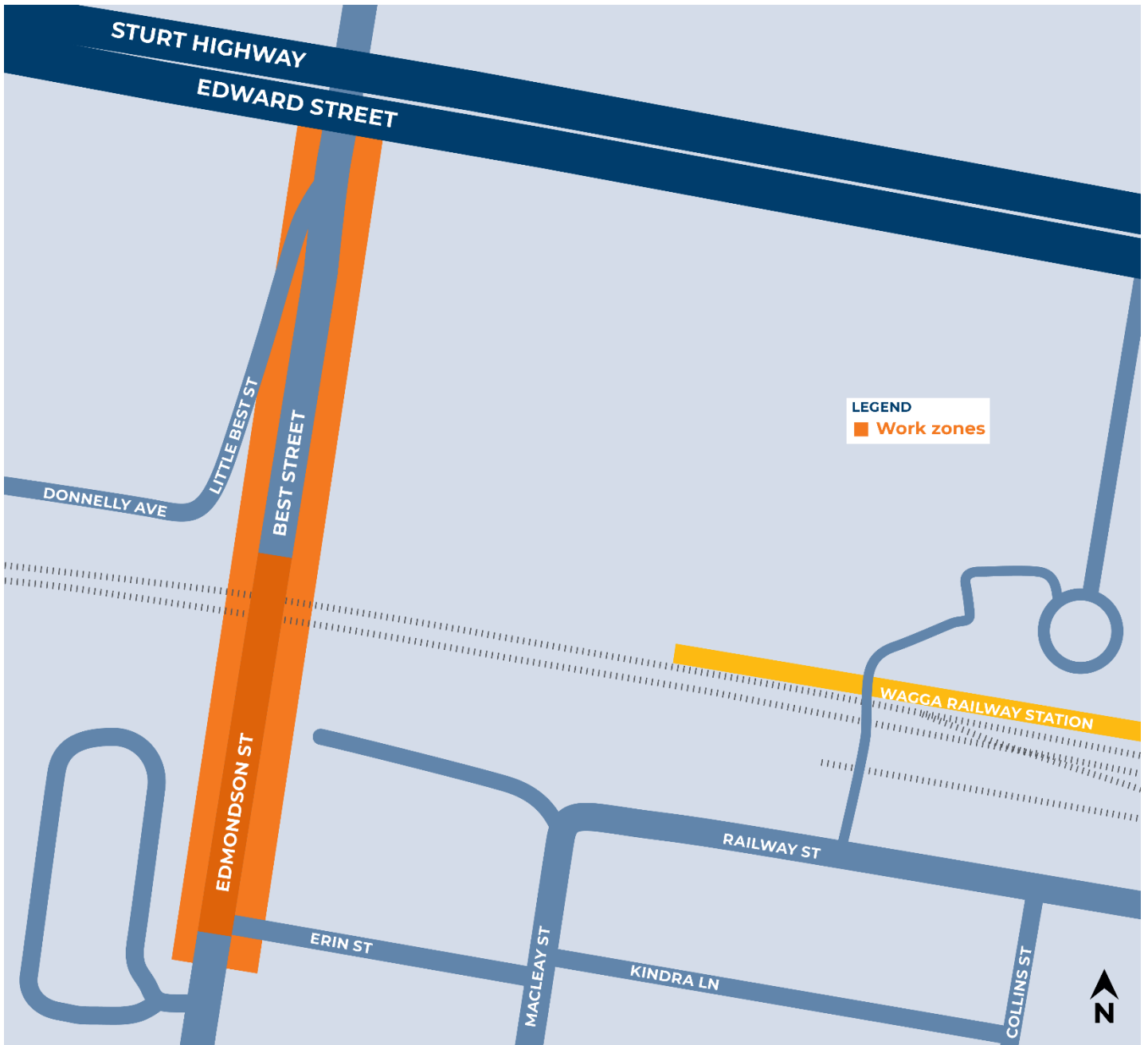
- Traffic controls will be in place.
- Works programmed to best minimise noise impacts.
- Works will be monitored to ensure compliance with Project Approval Conditions.

Thank you for your patience and cooperation while we carry out these works.

If you have any questions please contact 1800 732 761 or email inlandrail@artc.com.au

Information about Inland Rail is available at <https://inlandrail.artc.com.au/>

What can I expect?



Complaints and enquiries about the works may also be made to the number or email address below. We will continue to keep you updated on the progress of work in your area.

1800 732 761

inlandrailnsw@artc.com.au

**INLAND
RAIL** 