

Powerline works North East rail line, Benalla Sunday 28 April 2024

McConnell Dowell has been engaged by the Australian Rail Track Corporation (ARTC) to undertake construction for the Inland Rail project.

Work being done

To enable the safe running of double-stacked freight trains additional height clearance between the rail and powerlines is required in some locations along the North East rail line near Lowens Lane, Benalla.

To achieve this, McConnell Dowell will replace or extend some power poles and cables to create the required clearance.

What can I expect?

- Works will occur between 7am-7pm
- Construction noise during the day
- Traffic management and reduced speeds will be in place during some works, which may cause traffic delays
- Trucks and other vehicles entering and exiting construction sites, may cause minor traffic delays
- Heavy machinery and equipment operating onsite
- Delivery of materials and equipment
- Any directly affected properties will be notified by AusNet if interruptions to power supply are expected.

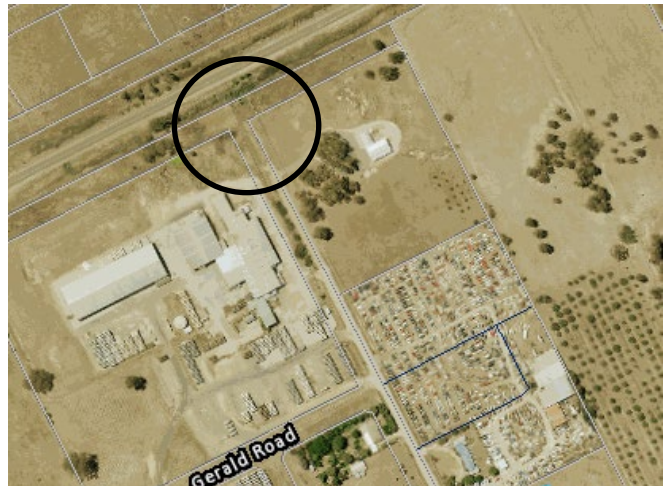
Machinery used

- Power trucks, elevated work platform, crane, excavators, non-destructive digging truck and light vehicles will be used within the works areas.

How we're managing impacts

- Water carts will be onsite to wet down areas to assist in managing dust
- Traffic controls will be in place, where required.

Thank you for your patience and cooperation while we carry out these works.



Works area at the end of Lowens Lane, Benalla.

Contact us

📞 1800 929 244

✉ victoriaprojects@artc.com.au

📍 39 Bakehouse Road, Kensington, Vic 3031

Please call our free translation and interpreter service on **131 450** (24 hours a day) if English is your second language and you need help reading this document