

# Ground investigation and survey works

## Various locations, Euroa

### May-June 2024

---

Inland Rail is a fast freight backbone that will transform how goods are moved around Australia, generating opportunities for our regions and our economy, now and into the future.

John Holland is delivering Tranche 2 early works for the Beveridge to Albury section of Inland Rail.

#### Work being done

Specialist contractors will be undertaking site survey and investigation works at various locations in and around the Euroa Station Precinct and along adjoining roads including Scott Street, Anderson Street, Hinton Street, Brock Street, Campbell Street, Railway Street, Elliot Street, Frost Street and Birkett Street.

Activities will include:

- Surveying road and pavement levels at multiple locations using handheld equipment
- Locating and mapping underground services using non-destructive digging (NDD) and vacuum extraction vehicles
- Drilling into the ground and taking soil samples for testing and assessment. Once the works are complete at each location the hole will be filled.

Works will occur between **7am-6pm weekdays and 7am-1pm on Saturdays from late-May to the end of June.**

During this time pedestrians and motorists are asked to take care and observe all traffic management instructions and signage.

*Turn over for map showing approximate work locations.*

#### What can I expect?

- **Works 7am-6pm Monday to Friday and 7am-1pm Saturdays**
- Traffic management will be in place where required
- Reduced speed limits of 40km/h near works
- Workers using machinery, equipment, hand tools and service vehicles operating at each site
- The drilling process will create small holes in the ground which will be filled in at the completion of the works
- Nearby residents can expect some noise during daylight hours and some additional construction workers and vehicles in the area.

#### Machinery used

Small truck mounted drill rig, non-destructive digging (NDD) vehicle, support vehicles, workers using hand tools and survey equipment, traffic management equipment and signage.

#### How we're managing impacts

- Traffic management and reduced road speeds
- Environmental controls in place
- Access to private properties will not be impacted.

#### Cancellation of works

Works can sometimes be cancelled at short notice depending on weather and other factors. Should this occur, works will be rescheduled.

For any concerns or enquiries phone 1800 732 761 or email [inlandrailvic@inlandrail.com.au](mailto:inlandrailvic@inlandrail.com.au)

**Thank you for your patience and cooperation while we carry out these works.**

---

#### Contact us

 1800 732 761

 [inlandrailvic@inlandrail.com.au](mailto:inlandrailvic@inlandrail.com.au)

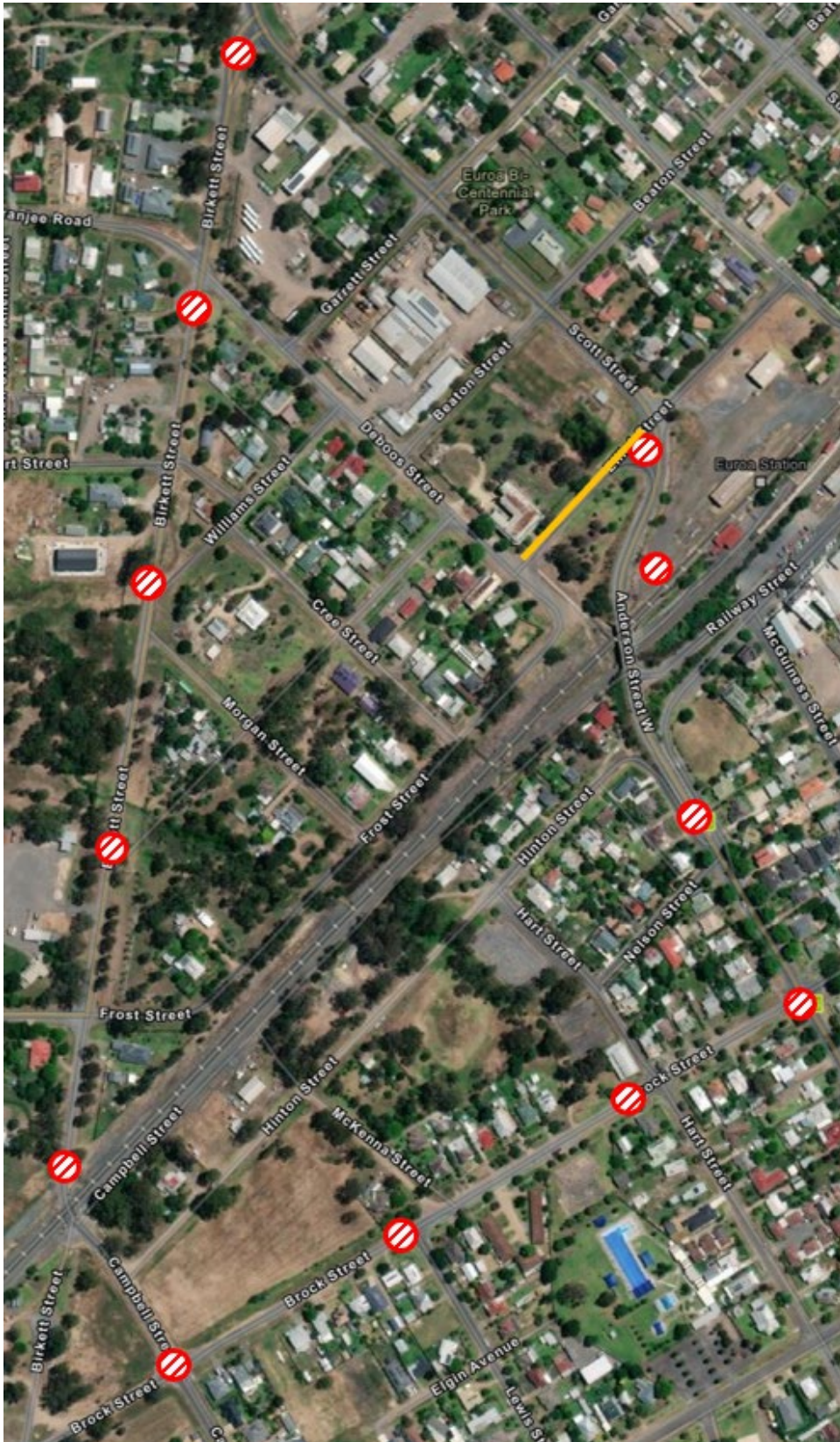
 39 Bakehouse Road, Kensington, Vic 3031

Please call our free translation and interpreter service on 131 450 (24 hours a day) if English is your second language and you need help reading this document

**INLAND  
RAIL**   
An Australian Government Initiative

## Location of works

Geotech test pits, non-destructive digging (NDD) and borehole drilling works will take place at various locations along Birkett, Campbell, Brock, Anderson and Elliott streets and within the Euroa Station Precinct.



### Legend



Geotech test pit, NDD and borehole drilling locations.

Traffic management, including speed reductions, will be located around worksites as needed.



Short term single lane closure of the northbound lane on Elliott Street between De Boos and Scott streets.