

Kemp Street bridge, Junee

Gas services relocations

May 2024 – August 2024

Utilities contractors, working on behalf of Inland Rail, will undertake works to relocate gas services in the vicinity of Kemp Street bridge, Junee between **Monday 27 May 2024 and Friday 9 August 2024**.

These works have been assessed through a Review of Environmental Factors under the *Environmental Planning and Assessment Act 1979*.

We want to reassure residents that starting these works now does not mean approval has been given for major construction to begin on the Albury to Illabo section.

Completing works before the Albury to Illabo project obtains approval from the Department of Planning and Environment means we can start major construction more efficiently once approvals are issued.

Overview of early works

- Relocate existing and install new gas pipelines between Railway Parade and Edgar Street

When are early works occurring?

Early works are expected to commence late May 2024 and be completed by August 2024.

See over page for a map showing the proposed early works areas in the vicinity of Kemp Street bridge.

Hours of work

The works will occur during normal working hours of **7am to 6pm Monday to Friday, 8am to 1pm Saturdays and 7am to 6pm Sundays**.

There may be a requirement for night works at some locations to minimise the impact on the community. We will notify impacted residents in advance if any nightworks are required.

Sites access roads used

Construction contractors will access the work sites from Seignior Street, Kemp Street, Edgar Street and Railway Parade.

What can I expect?

- Potential temporary road closures at Edgar Street (between Hill Street and George Street); at Railway Lane (between Thomas Street and Kemp Street); and Seignior Street
- Construction machinery and equipment operating on site
- Delivery of materials and equipment to site
- Temporary service interruptions may be required. Impacted residents will be notified in advance

Machinery used

Small and large trucks, water cart, vacuum trucks, flood lights, generator, welding equipment, concrete saw, elevated work platforms, hand tools, excavators, directional drilling/boring machine, light vehicles.

How we're managing impacts

- Traffic controls will be in place at each street and property access will be maintained for all impacted residents
- Some of these works will be noisy and mitigation measures will be in place.

Thank you for your patience and cooperation while these works are carried out.

Contact us

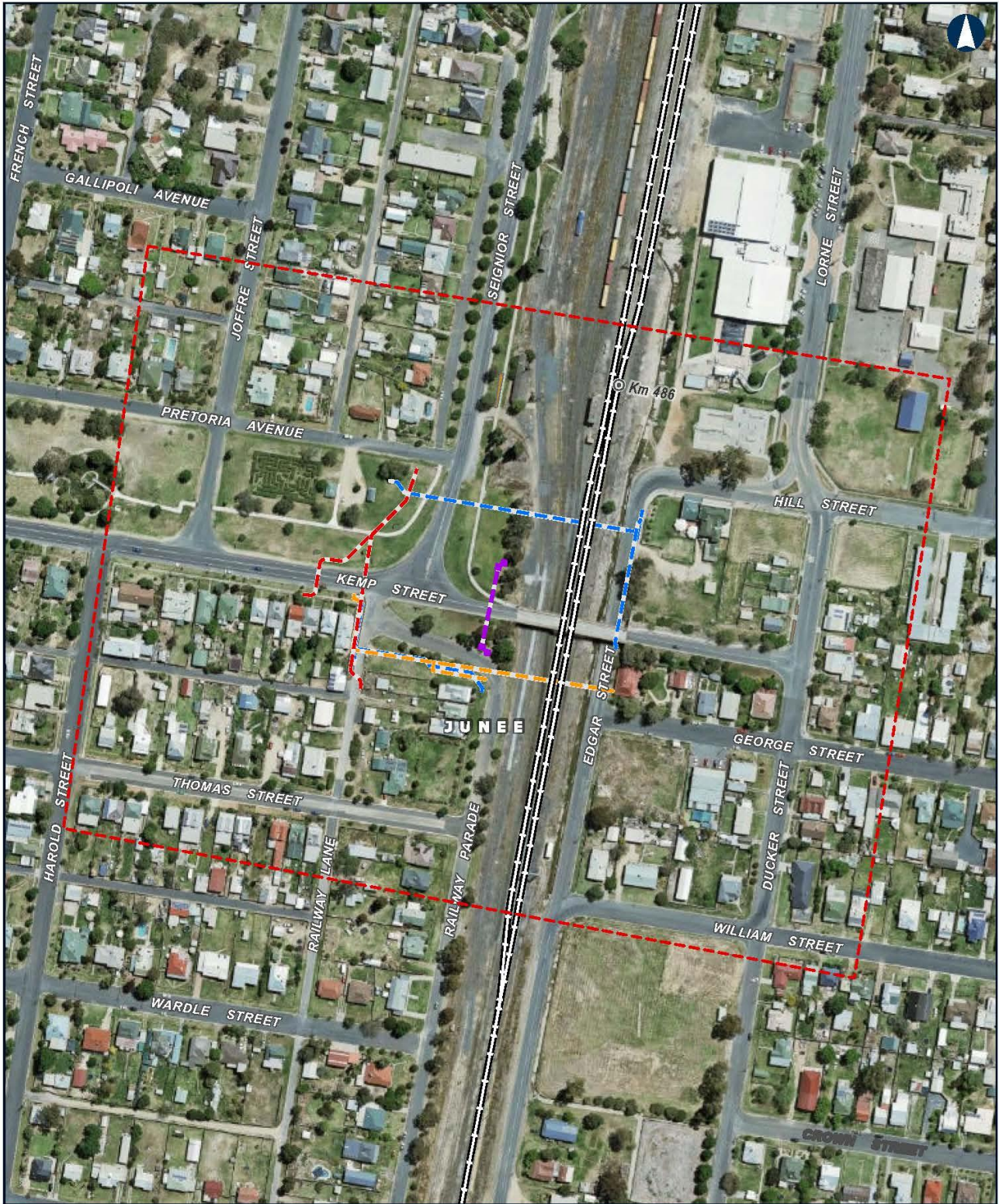
 1800 732 761

 inlandrailnsw@inlandrail.com.au

 Inland Rail, GPO Box 14, Sydney NSW 2001

**INLAND
RAIL** 

Construction works locations – Kemp Street bridge, Junee



ALBURY TO ILLABO		Kemp Street Supplementary REF - Site Layout		Figure 5	
<p>0 50 100 m</p> <p>Coordinate System: GDA 1994 MGA Zone 55</p> <p>Date: 23/11/2022 Paper: A4 Author: IR GIS (JB) Scale: 1:3,000 Approver: Rachel Gray Rev: 0</p> <p>Data Sources: NSWDTDB</p>		<ul style="list-style-type: none"> ⊙ KM posts — Track alignment ⬜ Kemp Street Design Utilities — New gas utility — New water utility — New sewer utility — New telecommunication utility 			
<p><small>This data is provided for information purposes only. As this GIS plan has been prepared from material provided to ARTC by an external source, ARTC cannot and does not attest to its completeness, accuracy or suitability. While every care is taken to ensure the accuracy of the data, ARTC makes no representation or warranty and assumes no duty of care or other responsibility as to the completeness, accuracy or suitability of the information contained in this GIS plan. ARTC will not be responsible for any loss or damage suffered as a result of any person who ever placing reliance upon the information contained within this GIS plan.</small></p>					