

# Ground investigation and survey works

## Short Street, Broadford

### 20 June – mid-August 2024

---

Inland Rail is a fast freight backbone that will transform how goods are moved around Australia, generating opportunities for our regions and our economy, now and into the future.

John Holland is delivering Tranche 2 early works for the Beveridge to Albury section of Inland Rail.

#### Work being done

Specialist contractors will be undertaking site survey and investigation works at various locations along Short Street, Rupert Street, Catherine Court, Sutherland Street and within the nearby rail corridor.

Activities will include:

- Establishing a temporary site office near Broadford train station
- Undertaking a survey of the ARTC railway track, road and pavement levels at multiple locations using handheld equipment. Surveys will also be required at a small number of private properties. Impacted property owners will be contacted regarding access prior to these works commencing
- Locating and mapping underground services using non-destructive digging (NDD)
- Borehole drilling using a small truck mounted drill rig to take soil samples for testing and assessment. Once the works are complete at each location the hole will be filled
- Establishing a groundwater well on Short Street. This involves drilling into the ground, installing a narrow pipe and fixing a cover to allow access as required
- Overnight works involving surveying the V/Line track while trains are not running. Workers will use hand held tools and equipment within the rail corridor. Workers will access the rail corridor at Broadford train station and via Jamieson Street.

During this time pedestrians and motorists are asked to take care and observe all traffic management instructions and signage.

*Turn over for map showing approximate work locations.*

#### What can I expect?

- **Works 7am-6pm Monday to Friday and 7am-1pm Saturdays**
- **Overnight low impact works in the rail corridor between Sunday 30 June and Wednesday 3 July, 9pm-5am**
- Traffic management, including a short period (up-to a week) where temporary traffic lights and shuttle flow over the Short Street bridge will be in place
- Reduced speed limits of 40km/h near works
- Workers using machinery, equipment, hand tools and service vehicles operating at each site
- The drilling process will create small holes in the ground which will be filled in at the completion of the works
- Nearby residents can expect some noise during daylight hours and some additional construction workers and vehicles in the area
- The groundwater well on Short Street will require regular monitoring and traffic management will be in place during these times.

#### Machinery used

Small truck mounted drill rig, non-destructive digging vehicle, support vehicles, workers using hand tools and survey equipment, traffic management equipment and signage.

#### How we're managing impacts

- Traffic management and reduced road speeds
- Environmental controls in place
- Access to private properties will not be impacted.

#### Cancellation of works

Works can sometimes be cancelled at short notice depending on weather and other factors. Should this occur, works will be rescheduled.

For any concerns or enquiries phone 1800 732 761 or email [inlandrailvic@inlandrail.com.au](mailto:inlandrailvic@inlandrail.com.au)

**Thank you for your patience and cooperation while we carry out these works.**

---

#### Contact us

 1800 732 761

 [inlandrailvic@inlandrail.com.au](mailto:inlandrailvic@inlandrail.com.au)

 39 Bakehouse Road, Kensington, Vic 3031

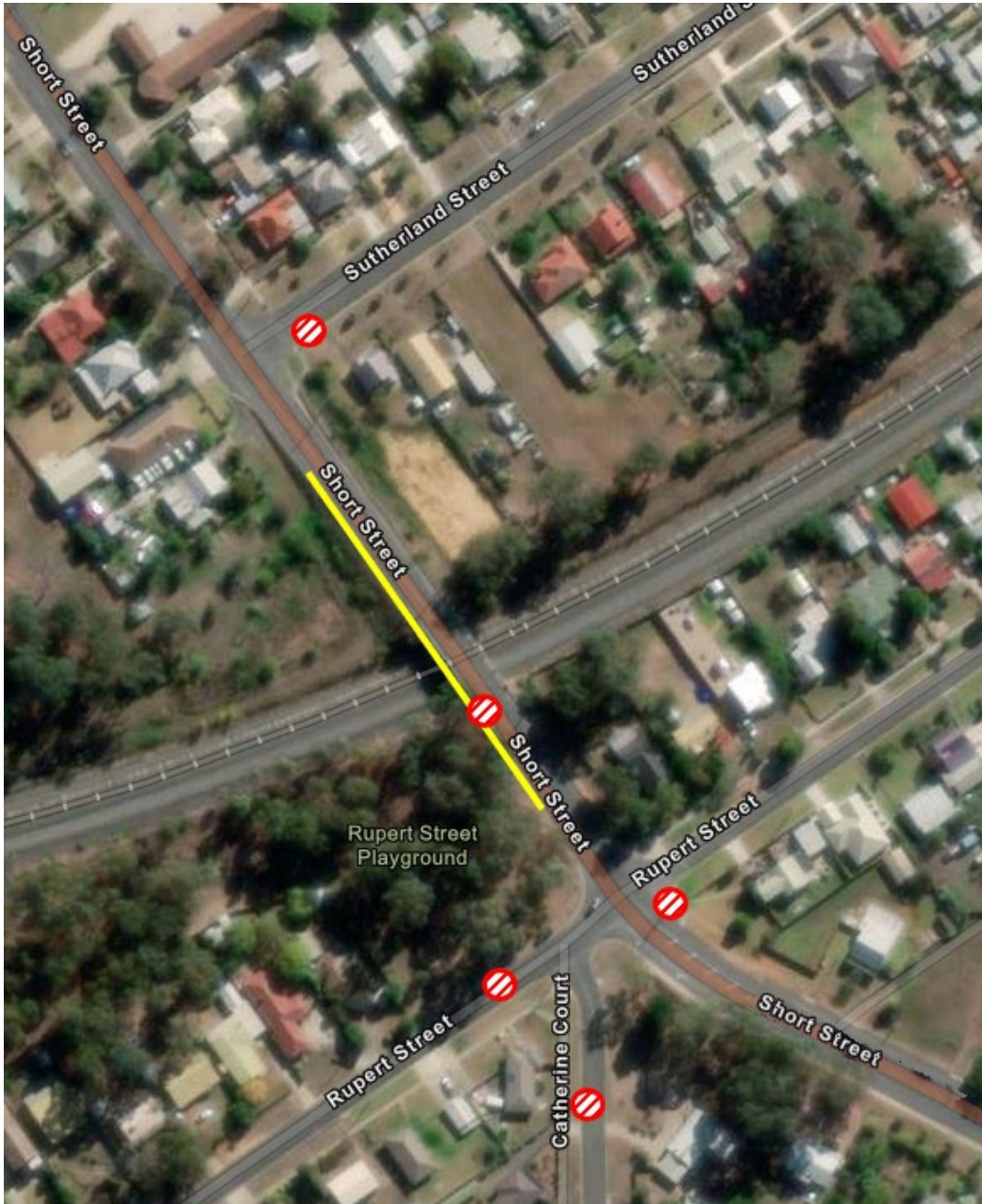
Please call our free translation and interpreter service on 131 450 (24 hours a day) if English is your second language and you need help reading this document

**INLAND  
RAIL**   
An Australian Government Initiative

## Location of works

Low impact survey works will take place at various locations along Short Street, Rupert Street, Catherine Court, Sutherland Street and within the nearby rail corridor.

Non-destructive digging (NDD), groundwater well and borehole drilling works will take place at locations along Short Street, Rupert Street, Sutherland Street and Catherine Court. Approximate site locations have been marked in the below map. Locations may change or additional sites may be required at times.



### Legend



NDD, groundwater well and borehole drilling locations



Temporary shuttle flow arrangements at times

## Inland Rail works in Broadford

At times, Inland Rail works will be taking place at other locations in Broadford. Scan the QR code for works notifications detailing construction activities taking place in other areas.

