

An aerial photograph showing a blue and yellow locomotive pulling a long freight train on a newly constructed rail line. The train is moving through a vast, green agricultural landscape under a clear blue sky. The rail line is flanked by reddish-brown earth, and the surrounding fields are lush and green.

Illabo to Stockinbingal Community Consultative Committee

Date: Thursday, 8 August 2024

Time: 1pm – 3pm

Venue: Junee Ex-Services Memorial Club
75 Broadway Street, Junee NSW 2663

Acknowledgement of Country

Inland Rail acknowledges the Traditional custodians of the land on which we work, and pays our respects to Elders past and present.

Journey artwork created by Elenore Binge, proud Gomeroi/Kamilaroi woman

INLAND
RAIL 





Conflicts of interest – Garry West, Chair CCC

Introduction/Presenters

James Kennedy

Delivery Director – A2P

Conrad Strachan

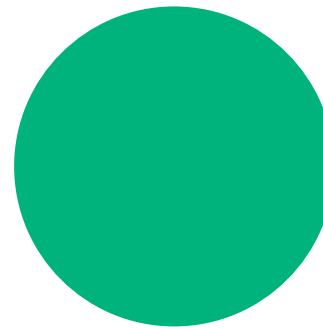
Project Director I2S

Wayne Window

Environment Manager – NSW and Victoria

Grant Johnson

Stakeholder Engagement Lead, I2S





Program update James Kennedy – Delivery Director A2P

INLAND
RAIL 



Inland Rail Program update



April 2023

- Inland Rail Review released

August 2023

- IRPL Board appointment

Jan - March 2024

- Final review and submission of governing documents

July 2023

- Legal establishment of IRPL
- Statement of Expectations released

December 2023

- IRPL CEO appointed

1 May 2024

- IRPL operational
- Inland Rail Pty Ltd has now established a separate governance and delivery arrangement for Inland Rail and its daily operations
- Email change to name@inlandrail.com

Looking ahead

- Supporting our new ways of operating and focusing on performance and achieving our delivery milestones
- Prioritising the construction of Inland Rail sections between Beveridge, Victoria and Parkes, NSW by the end of 2027
- Progressing planning for North of Narromine – securing the corridor through forward planning, approvals and land acquisition

Program Update

Section	Nature of works	Status
B2A – Beveridge to Albury	Enhancement	In construction (Tranche 1) Procurement (Tranche 2)
A2I – Albury to Illabo	Enhancement	Construction contract awarded; subject to environmental approval
I2S – Illabo to Stockinbingal	New track	In procurement; subject to environmental approval
S2P – Stockinbingal to Parkes	Enhancement	In construction
P2N – Parkes to Narromine	New track and upgrade	Completed & operational
N2N – Narromine to Narrabri	New track	Environmental approvals secured; corridor acquisition underway; subject to funding
N2NS – Narrabri to North Star Phase 1	Upgrade	Completed & operational
N2NS – Narrabri to North Star Phase 2	New track	In procurement; subject to environmental approval; subject to funding
NS2B – North Star to NSW/QLD Border	New track	Environmental approvals secured; corridor acquisition underway; subject to funding
B2G – NSW / QLD Border to Gowrie	New track and upgrade	Subject to environmental approval and funding
G2H – Gowrie to Helidon	New track	Subject to environmental approval and funding
H2C – Helidon to Calvert	New track	Subject to environmental approval and funding
C2K – Calvert to Kagaru	New track	Subject to environmental approval and funding

Funded & prioritised for completion by 2027



Construction Progress South of Parkes





Project update

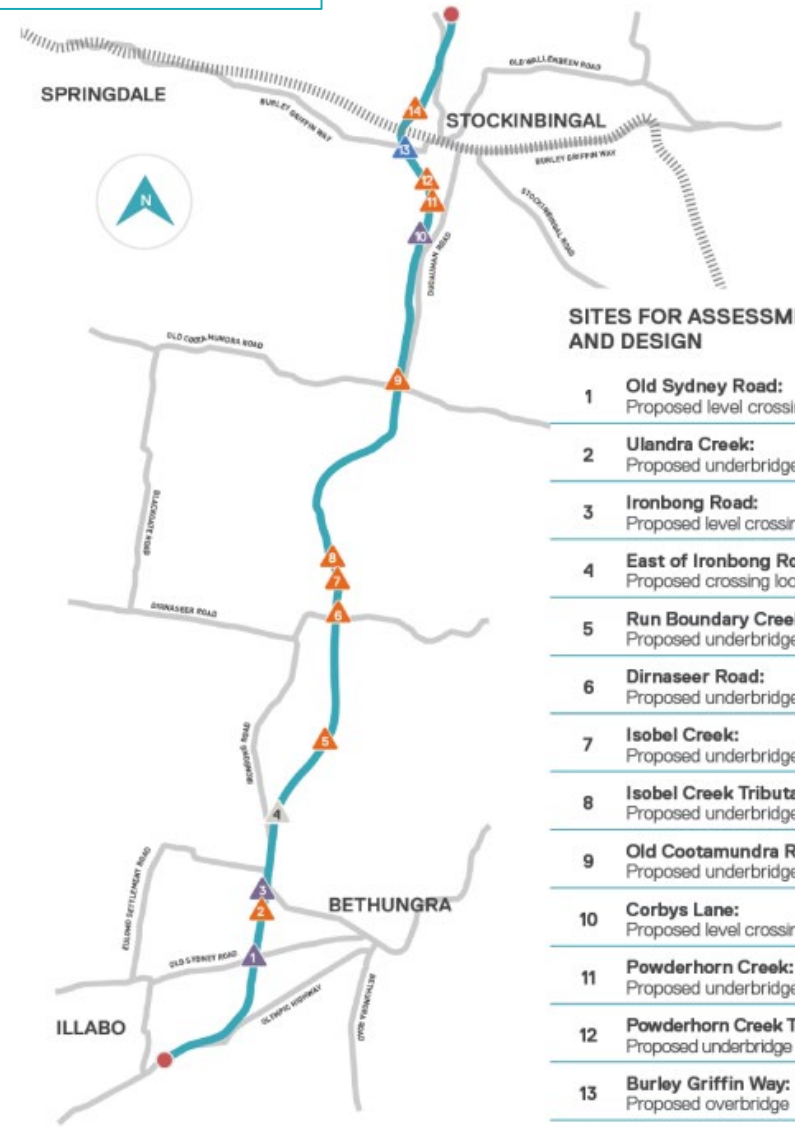
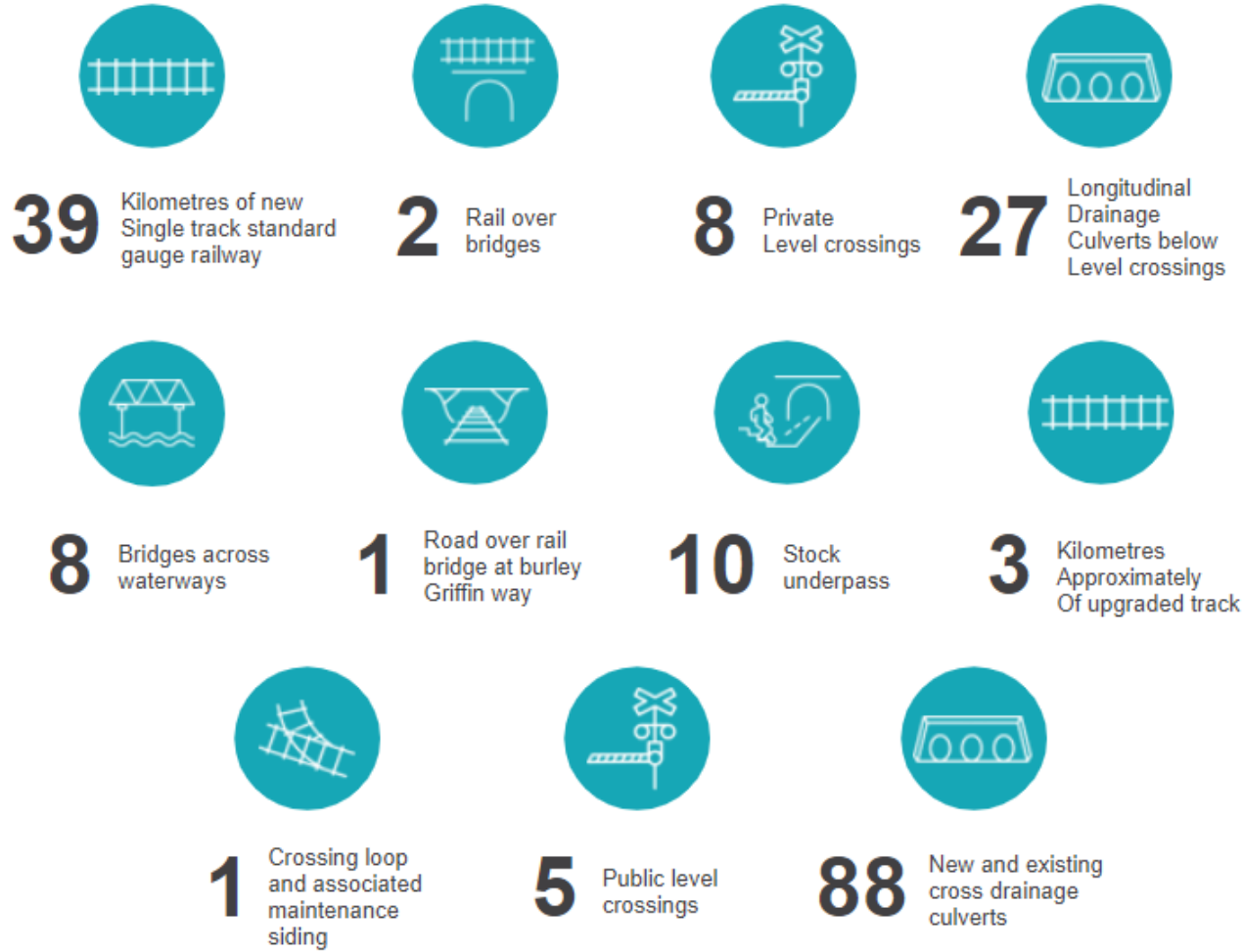
Conrad Strachan- Project Director I2S

**INLAND
RAIL** 

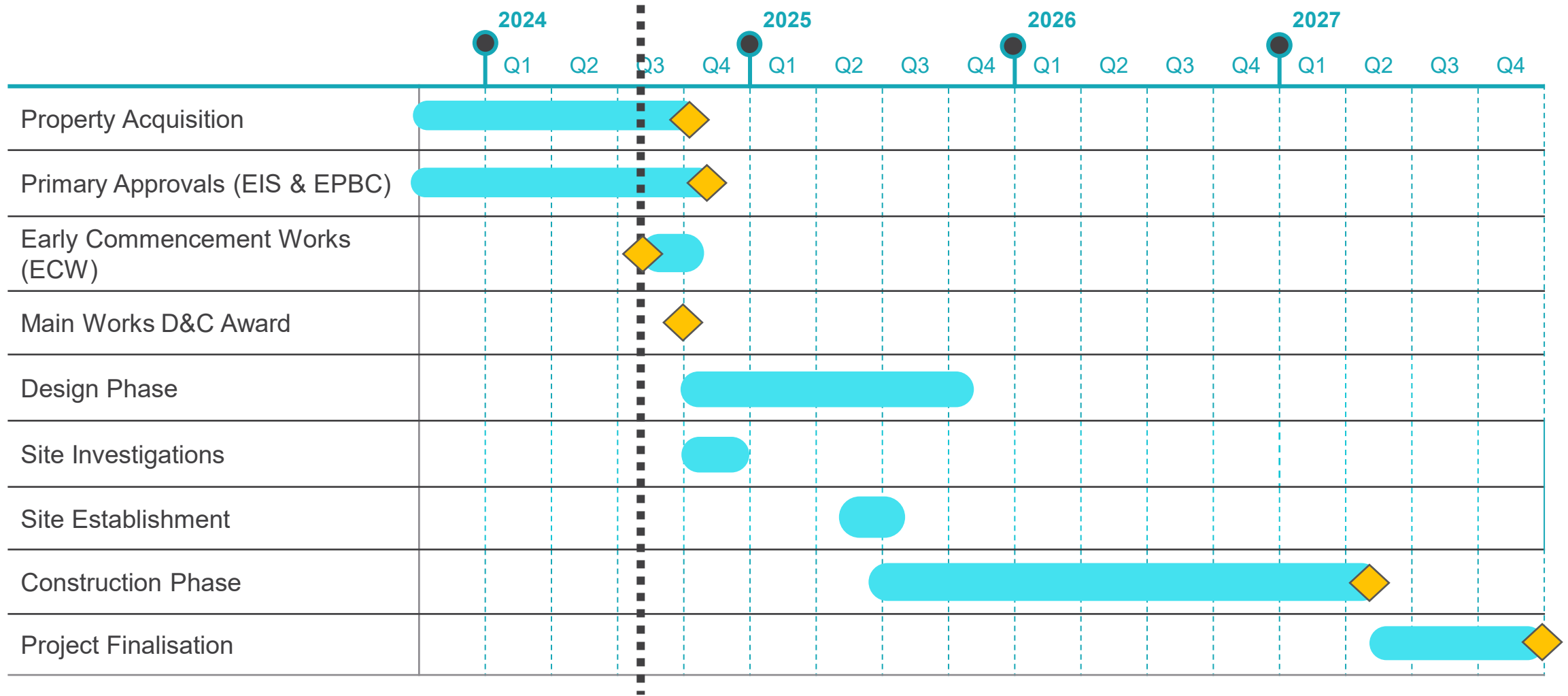


I2S Scope

Illabo to Stockinbinal greenfield sites



I2S Program





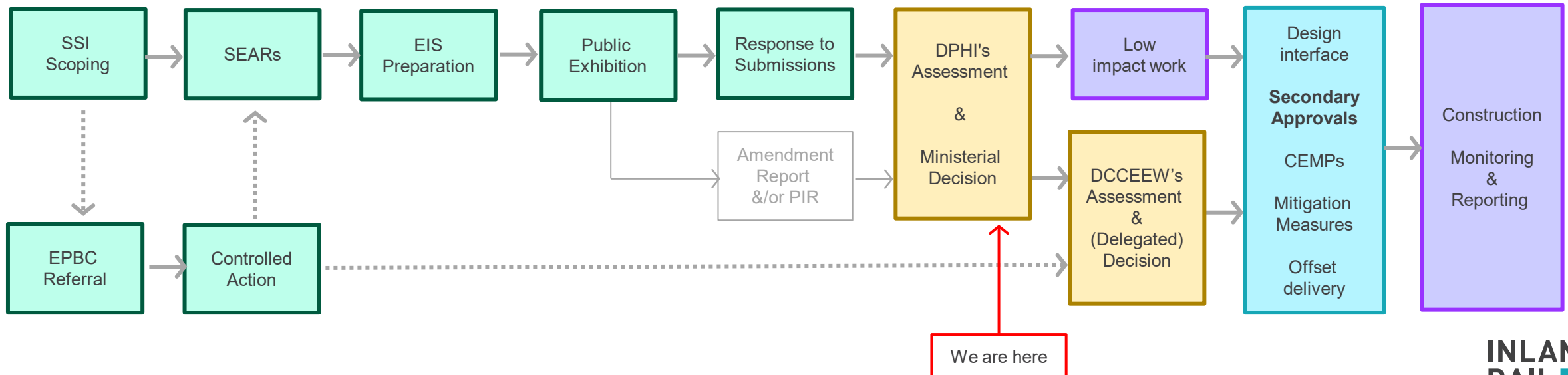
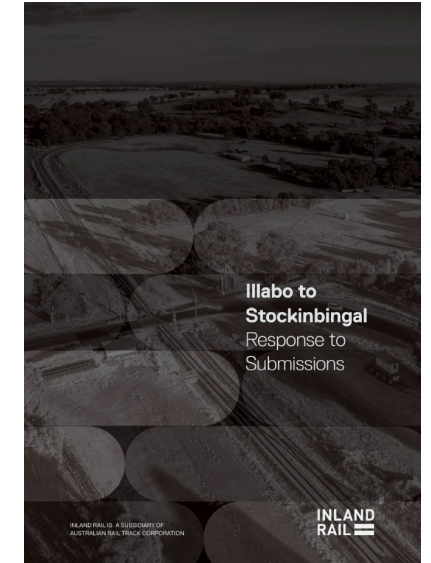
Environmental Approvals

**Wayne Window - Environment Manager -
NSW and Victoria**

**INLAND
RAIL** 

Approval Pathway

- NSW: CSSI and Commonwealth: EPBC Controlled Action
- EIS exhibition: September 2022.
- Response to Submissions: November 2023
Addressed 12 public, 2 community group and 15 agency/council submissions.
- Issues resolution and conditions negotiation has occurred since then
- Post approval tasks critical to successful delivery of the project



Negotiations and CSSI Approval Conditions

- Hydrology
 - Flood management outcomes
- Construction noise
 - Hours of work
- Operational noise
- Biodiversity
 - Additional biodiversity studies
 - Limits to clearing
 - Biodiversity outcomes
- Conditions
 - Limit or restrict
 - Require further actions
- Parts of the conditions package
 - Definitions
 - A – Administrative Matters
 - B – Community consultation
 - C – Construction focused
 - D – Operations
 - E – Key issues

EPBC approval

- Commonwealth assessment
- Bilateral agreement process with NSW
- Uses NSW CSSI assessment report and BDAR
- Targeted scope around impacts to Matters of National Environmental Significance
 - Threatened Ecological Communities
 - Threatened Flora and Fauna
- Targeted conditions
 - Reinforce impact limits
 - Focus on management outcomes

Secondary approvals – unlocking construction

- Construction Environmental Management Plans
 - Biodiversity and biosecurity
 - Flood and emergencies
 - Heritage
 - Noise and vibration
 - Soil and Water
 - Traffic
- Environmental Representative
- Environmental Protection Licence for “rail construction” via EPA
- Site establishment management plans
- Accommodation management plan
- Code of Conduct
- Social impact management plan
- Road works approvals via Councils or TfNSW

Awareness and outcomes

- Flood Design Consultation Protocol
 - Drainage structures
 - Dams
- Heritage assessments and reports
- Design outcome reports
 - Flood design reports
 - Noise mitigation reporting
 - Road safety audits
- Level crossing treatment reports

Bushfires and RFS corridor access

- ARTC has an emergency management plan
- Applies to all events reported to the Network Control Centre that are deemed an emergency, either by the relevant State emergency services or by ARTC Network Control
- Network Control and ARTC Incident Site representatives coordinate access and establish site protection (ie, stopping trains)
- Emergency Services can access the sites
- Backed up by a condition

ARTC	Division / Business Unit:	Safety & Systems		
	Function:	Rail Safety		
	Document Type:	Procedure		
Emergency Management				
RLS-PR-044				
Applicability				
ARTC Network Wide SMS				
Publication Requirement				
Internal / External				
Primary Source				
Emergency Management TA44				
Document Status				
Version #	Date Approved	Prepared by	Endorsed	Approved
2.0	31 May 2024	Corp Safety		GM Safety & Environment



Community update

Grant Johnson – Stakeholder Engagement Lead



Community grants

Inland Rail is supporting communities along the alignment by making voluntary financial contributions

Round 19 – October 2023 – Total \$1,300

Elwood's Hall s355 Committee

Round 20 – January 2024 – Total \$9,606

Ariah Park Community Projects - Robotics Club

Arts Centre Cootamundra

Cootamundra Picnic Races Club

Round 21 – April 2024 – Total \$6,263

Temora Arts Centre

Soroptimist International of Cootamundra



*Eligible organisations can apply for amounts between \$1,000 and \$4,000

Community Benefits

Inland Rail Program

December 2018
to May 2024

5,349
people

have worked on the
Inland Rail project



749

of whom are
First Nations
People

2,641 local
residents
have worked on the project

455 of whom are local
and First Nations People



420
women
employed

694
tradespeople
employed

2,844

people employed for 26 weeks or over
for a minimum of 15 hours a week



617 local businesses
have supplied to
the project

33 First Nations
businesses
Australia-wide

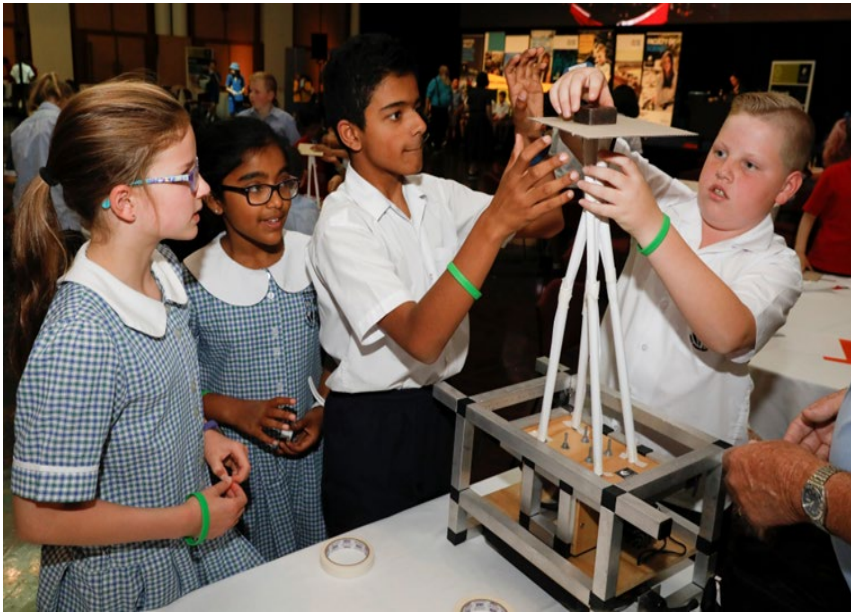


\$449.66m total spend
with local
businesses

\$44m total spend with
First Nations businesses
Australia-wide

IR Skills Academy

Partnership extension signed with the Clontarf Foundation in November 2023 for a further two years. It will focus on academies in the Albury to Parkes (A2P) footprint. The partnership launch event was held in Albury in March 2024.



IR Supplier Capability Workshops - 148 regional businesses, including 14 First Nations business, have participated in workshops in Albury, Wagga Wagga, Parkes, and Forbes. What major project buyers want from suppliers, and how to be more competitive suppliers.

'STEM on Track' event held in Albury and Wagga Wagga in April 2024 with 18 local schools attending.



Landholder interactions & property acquisition update

Property acquisition status:

- 25 properties in total
- 8 acquisitions settled
- 1 partial property compulsorily acquired
- all others agreed and progressing to exchange or settlement

Landholder interactions:

- Property Adjustment Plans prepared for all properties
 - Crossing arrangements (private LX, stock underpass)
 - Fencing & gates
- Individual Property Management Plans in preparation
 - Condition of Approval

Individual Property Management Plans

Purpose: Documents agreed outcomes of engagement

Evolving plan:

- Reference Design
- Detailed Design (70%, 100% and IFC)
- Construction Phase
- Commissioning and handover (includes remediation of temporary land occupation)

Content:

- Property information
- Pre-construction access and infrastructure
- Access and private infrastructure arrangements during construction
- Private crossing design criteria
 - Private utilities (e.g. enveloper pipes)
 - Fencing and gates
 - LX and stock underpass arrangements

Next steps

Communication of:

- NSW Government approval
- Early commencement works contract
- Preferred contractor announcement
- Announcement of Design and Construct contract award
- Communication of Federal Government approval

Coordination and notification of early works

Progression of Individual Property Management Plans



General Business – Garry West, Chair CCC

INLAND
RAIL 





Conclusion and confirmation of actions

Garry West, Chair CCC

**INLAND
RAIL** 



Thank you

INLAND
RAIL 

