



Albury to Illabo Community Consultative Committee

Albury sub-committee

Wednesday 7 May 2025

**INLAND
RAIL** 

Acknowledgement of Country

Inland Rail acknowledges the Traditional Custodians of the land on which we meet today, and pay our respects to their Elders past and present. We extend that respect to Aboriginal and Torres Strait Islander peoples here today.

**INLAND
RAIL** 



Conflicts of interest

Garry West – Chair CCC

INLAND
RAIL 

Agenda

- **Program update**
- **Project update**
- **Planning and Environmental update**
 - **Operational Noise and Vibration (ONVR)**
- **Community update**
- **General Business**

Introduction/Presenters

James Kennedy

Delivery Director – A2P

Malcolm Clark

Project Director - A2I/S2P

Rachael Labruyere

Environmental Manager – A2P

Susan Kay

Program Principal Advisor

Kate Hardy

Stakeholder Engagement Lead A2I





Program Update

James Kennedy – Delivery Director A2P

**INLAND
RAIL** 



Annual Sustainability Report

Highlights

FY24



\$226,144

in community grants
to 70 recipients



27,523

offset credits acquired
in NSW



86% enhancement
of ecological value

verified by the Infrastructure
Sustainability Council on the Narrabri
to North Star Phase 1 project



1,019

local construction-related
jobs created



123 First Nations
workers

on construction projects



3 sustainability
contractor forums



\$78.3m

spent with local businesses
and \$6m spent with
First Nations businesses



53 | **30**
people | businesses

attended workforce development
events held in regional NSW



133 webinars

Inland Rail-developed Business
Sustainability webinars completed*



20,000
tonnes of steel

diverted from landfill on Narrabri
to North Star Phase 1 project



23 construction and
rail skills courses

delivered to 207 participants
by the Inland Rail Skills Academy



549 downloads

of sustainability capacity toolkits
from the Inland Rail website*



167 schools

participated in Inland Rail-supported
STEM activities, taking the total
to 609 schools involved since 2020



11 local business
capability workshops

upskilling 121 local businesses



1,500+ students

participated in Inland Rail-supported
STEM activities in FY24, taking
the total to over 11,500 students
since 2020

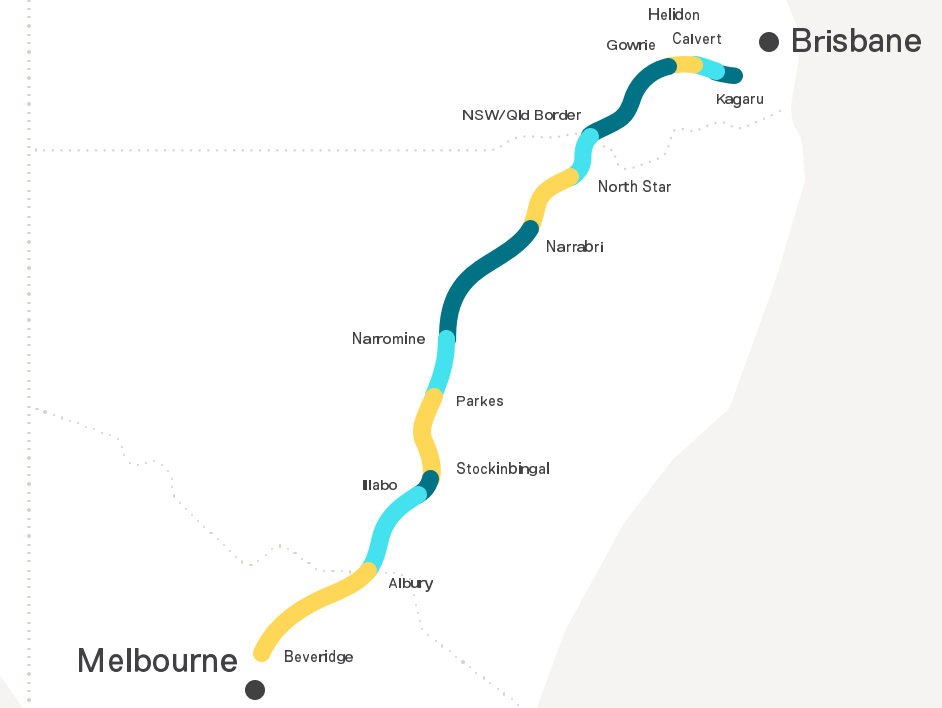
Adjacent Projects Update

Illabo to Stockinbingal (I2S)

- Detailed design and consultation
- Site sheds/compounds/laydown establishment
- Ongoing investigations:
 - Biodiversity investigations
 - Geotechnical investigations
 - Utility investigations
 - Heritage investigations

Stockinbingal to Parkes (S2P)

- Working towards closing out Darroobalgie Loop, Wyndham Avenue and Lachlan River Bridge
- Ongoing works at Wirrinya (track slew)
- Surveying and design checks— power poles



Beveridge to Albury (B2A) Update

- **Tranche 1 – first 4 sites in Victoria**
 - March - Project completion at Glenrowan
 - March – Pedestrian underpass opens in Wangaratta
 - April - Seymour-Avenel Road opens to public
 - April – first trains stop at new Wangaratta station platform
- **Tranche 2 – remaining 8 sites in Victoria**
 - Over the last 6 months community engagement for preliminary design on all 8 sites
 - Site establishment and early works commenced across all Tranche 2 sites
 - May – major construction commencing in Euroa



Birkett St level crossing upgrade works for Euroa detour route.

B2A - Green Street Bridge, Wangaratta





Project Update

Malcolm Clark – Project Director A2I/S2P

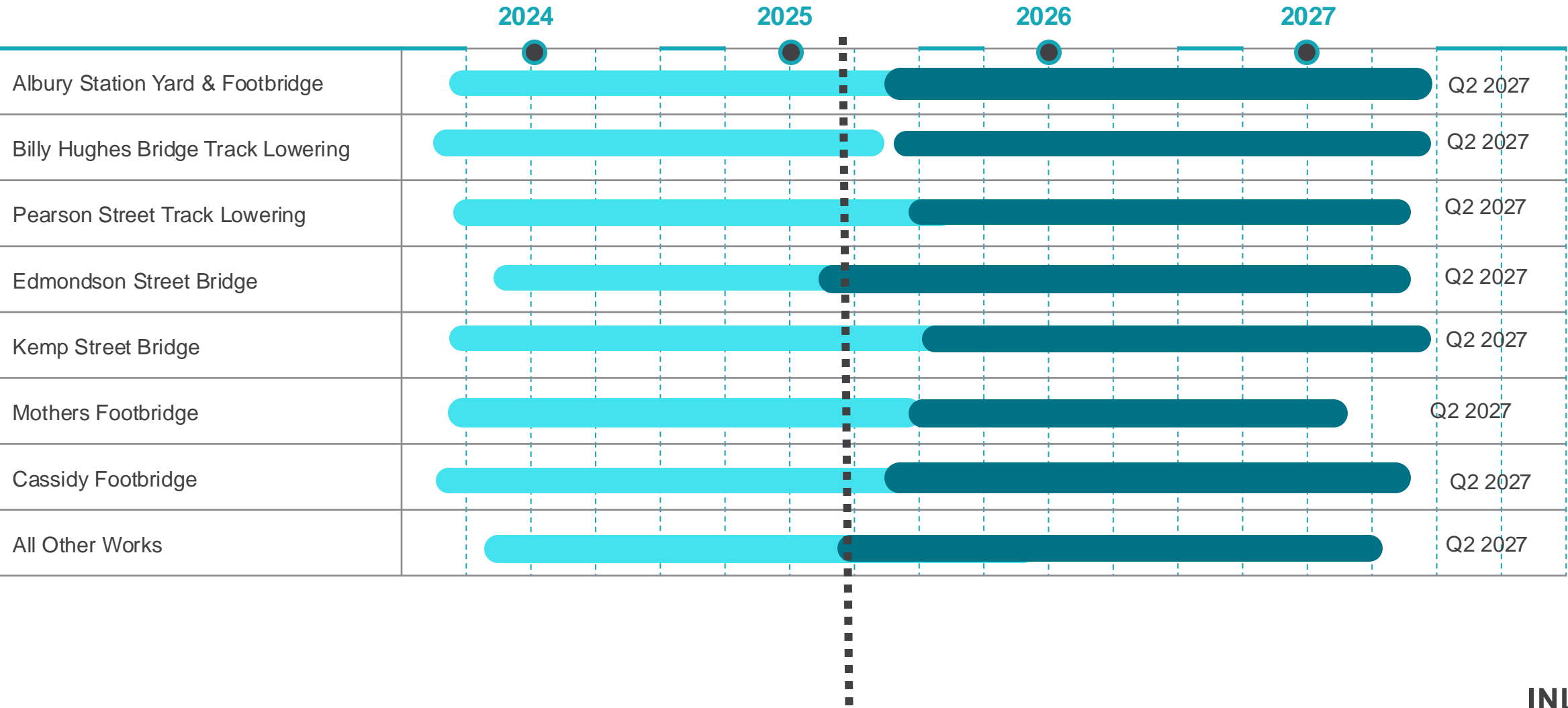
**INLAND
RAIL** 



A2I Program

Design development

Early works & Construction



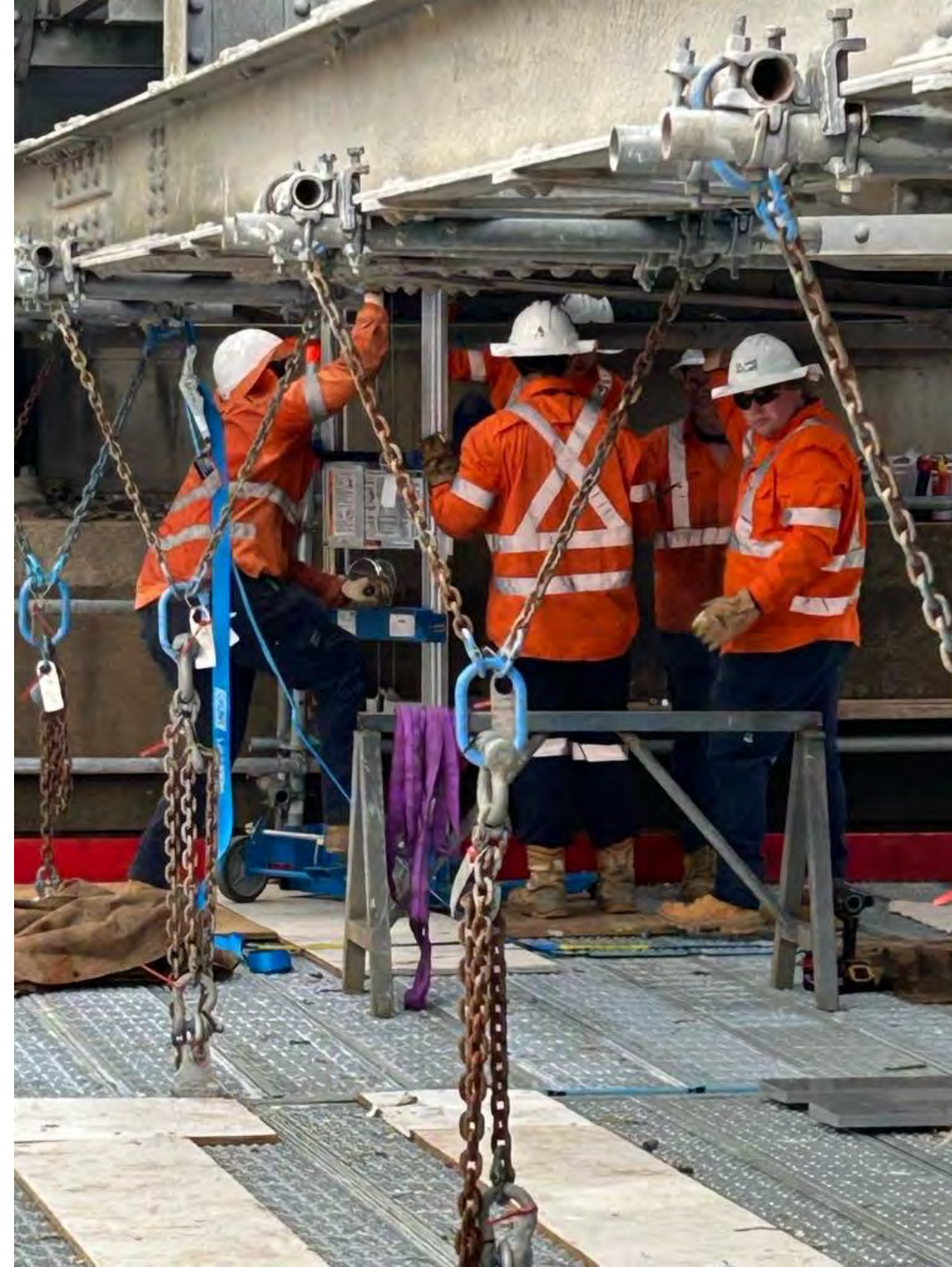


A2I Project Update

- The A2I/S2P Construction Contractor, Martinus, is working through Secondary Environmental Approvals and Detailed Design
- The NSW State Design Review Panel (SDRP) is ongoing, with the 6th SDRP session recently held; Inland Rail are continuing to work with SDRP as the project completes design development
- A2I are moving from Construction Stage A to Stage B
- Enabling works and site compound establishment are continuing around Edmondson St, Kildare College, Bomen, Junee and Illabo.
- Albury site establishment to begin in Q3 2025
- Major construction to commence in Q3 2025

March Possession

- Track possession occurred from 6pm on Friday 21 March, to 6pm on Monday 24 March
- Site establishment and construction works across multiple sites in the Junee to Illabo section of A2I were completed over this period as well as other works in S2P
- Works included:
 - Track works
 - Drainage works
 - Track formation reconstruction



May Possession

Works occurring from **Junee to Illabo** from 6am on Saturday 3 May until 3am on Monday 5 May 2025

Overview of works being completed

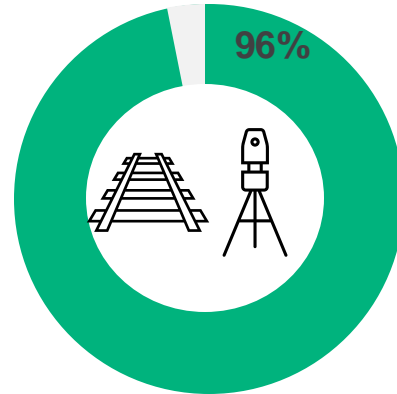
- Delivery of materials and equipment to sites
- Drainage works including culvert extensions
- Track related excavation works
- Track slews and tamping activities



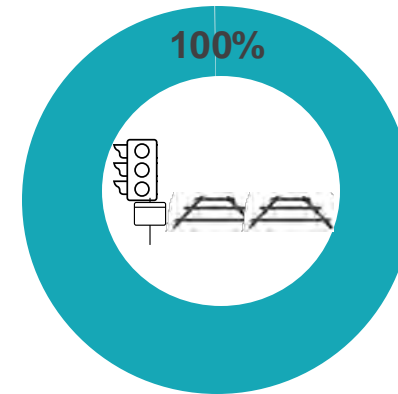
A2I Design Progress

Martinus
Design – ITC
Contract

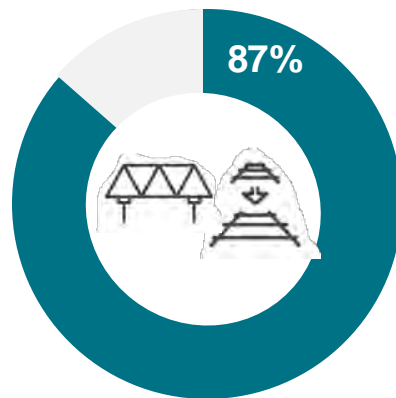
Clearance Sites



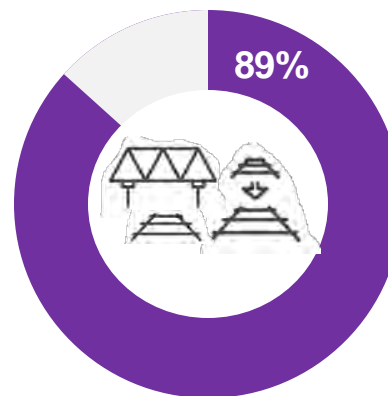
Junee to Illabo



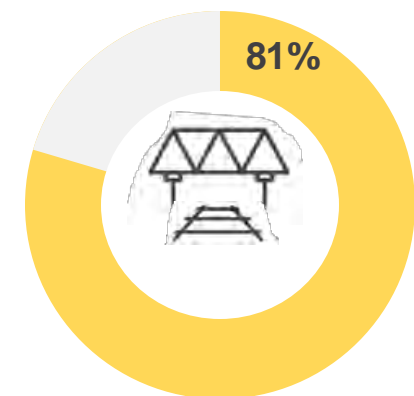
Albury Sites



Wagga Sites



Junee Sites



Lookahead to September 2025

Timing	Activity
Quarter 2, 2025	<ul style="list-style-type: none">• Continuation of enabling works• Continue Junee to Illabo works in May extended track possession• Commence some mobilise to Albury precinct
Quarter 3, 2025	<ul style="list-style-type: none">• September possession• Planned demolition of Edmondson Street (Wagga) and Kemp Street (Junee) bridges• Commence site compound facilities in Albury• Commence works in Albury precinct – Albury Station and Billy Hughes Bridge

What we've achieved at S2P!





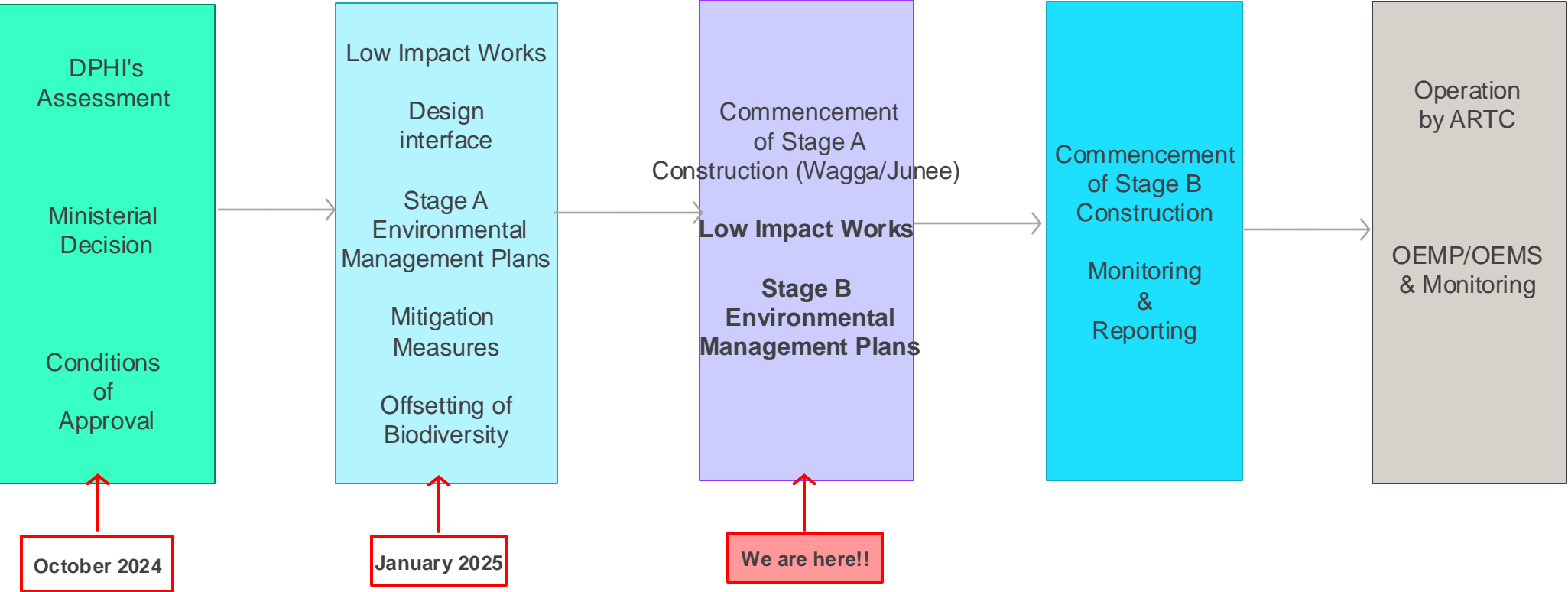
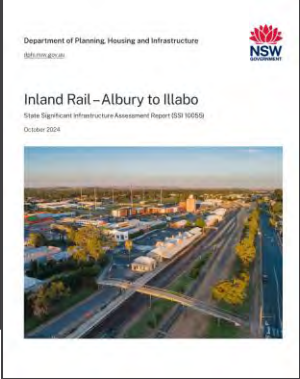
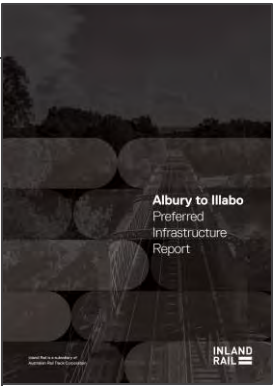
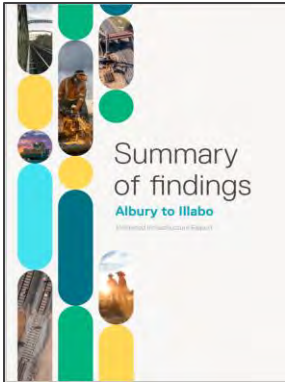
Planning and Environment

Rachael Labruyere - Environment Manager A2P

**INLAND
RAIL** 



Approvals and Construction



Heritage and Urban Design

1. Corridor wide approach

2. Re-use of salvaged materials including:

- Inclusion in landscape features
- Interpretive signage
- Inclusion in functional elements including seating, screens, shade structures and the body of bridges

2. Inclusion of Ground Plane Elements

3. Landscaping and Plantings

4. Temporary Hoardings

5. Public Events

- Consultation





Operational Noise and Vibration

Susan Kay – Program Principal Advisor

INLAND
RAIL 

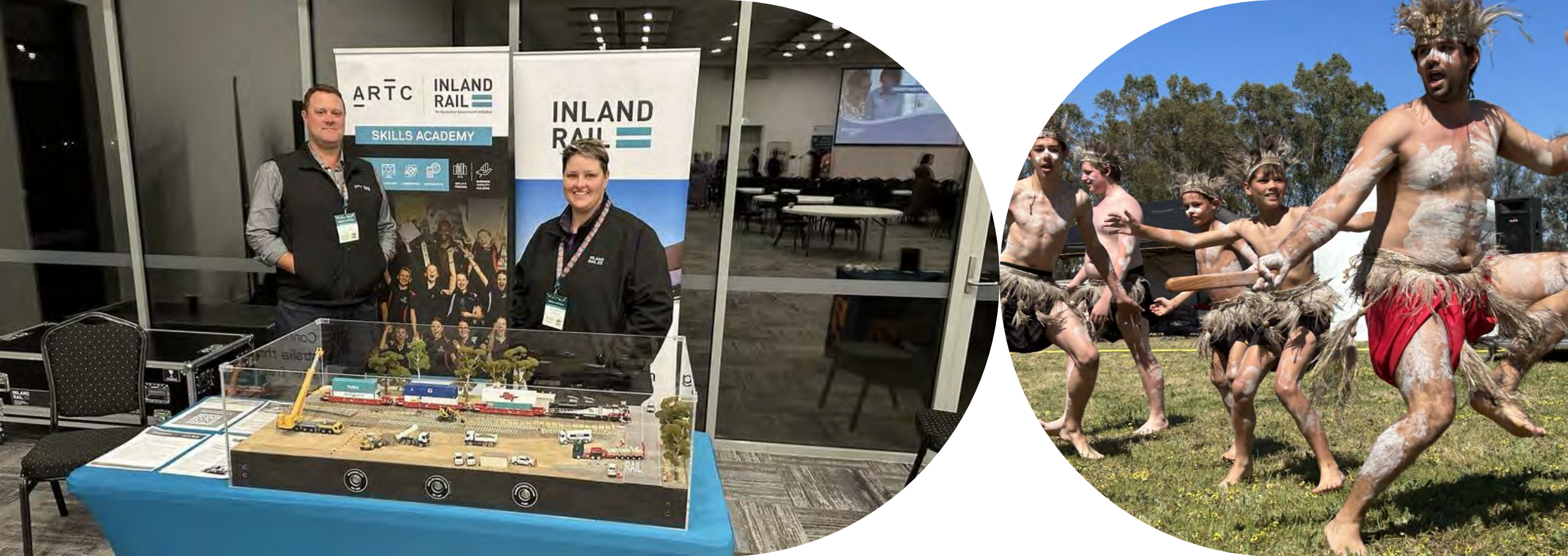
Operational Noise and Vibration (ONVR)

- The **Preferred Infrastructure Report (PIR)** identified the Locomotive Noise Control Program (LNCP) and at-property treatments (1 in Albury and 39 in Culcairn) as potential mitigation options
- The LNCP aims to install exhaust silencers on older, noisier locomotives
- The noise model in the PIR is updated as part of the ONVR
- The ONVR is IRPL's commitment to noise mitigation and incorporates additional noise monitoring, data from PN locomotives and community feedback

Operational Noise and Vibration (ONVR)

- Prior to the LNCP being included in the ONVR, **Department of Planning Housing and Infrastructure (DPHI)** requires an LNCP Report to demonstrate program effectiveness
- LNCP Report is in draft and expected to be submitted to DPHI mid-May
- ONVR will commence mid-year





Community Update

Kate Hardy – Stakeholder Engagement Lead A2I

**INLAND
RAIL**

Engagement Update

- Continuing our work with Councils and key stakeholders along the A2I alignment through regular engagement
- Monthly monitoring meetings with Councils and our delivery partner, Martinus
- Meet the Contractor event for A2I (Martinus), Wagga April 10
- STEM on Track events – Wagga and Albury, April 1-3
- SMART Workshop Tours – Albury, Culcairn, March 24-27



STEM on Track Discovery Day Albury



Upcoming Community Engagement Activities

- Quarter 2 - Councillor briefings occurring throughout May 2025
- Martinus *'Meet the Contractor'* event, Albury 8 May 2025
- Community drop in information sessions
- Planning for Henty Field Days and local shows
- SMART Workshop Tours – Lockhart LGA and Wagga LGAs, Term 2



First Nations Partnerships

- First Nations Cultural Appreciation Tours
 - Albury – 28 February
 - Wagga – 8 April
- Mentor panel discussion with STARS program in Albury on 1 April

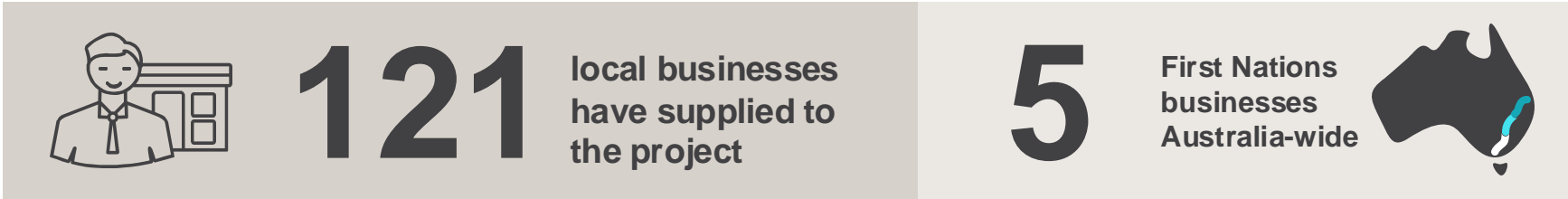




Community Benefits

A2I - S2P

July 2023
to January 2025



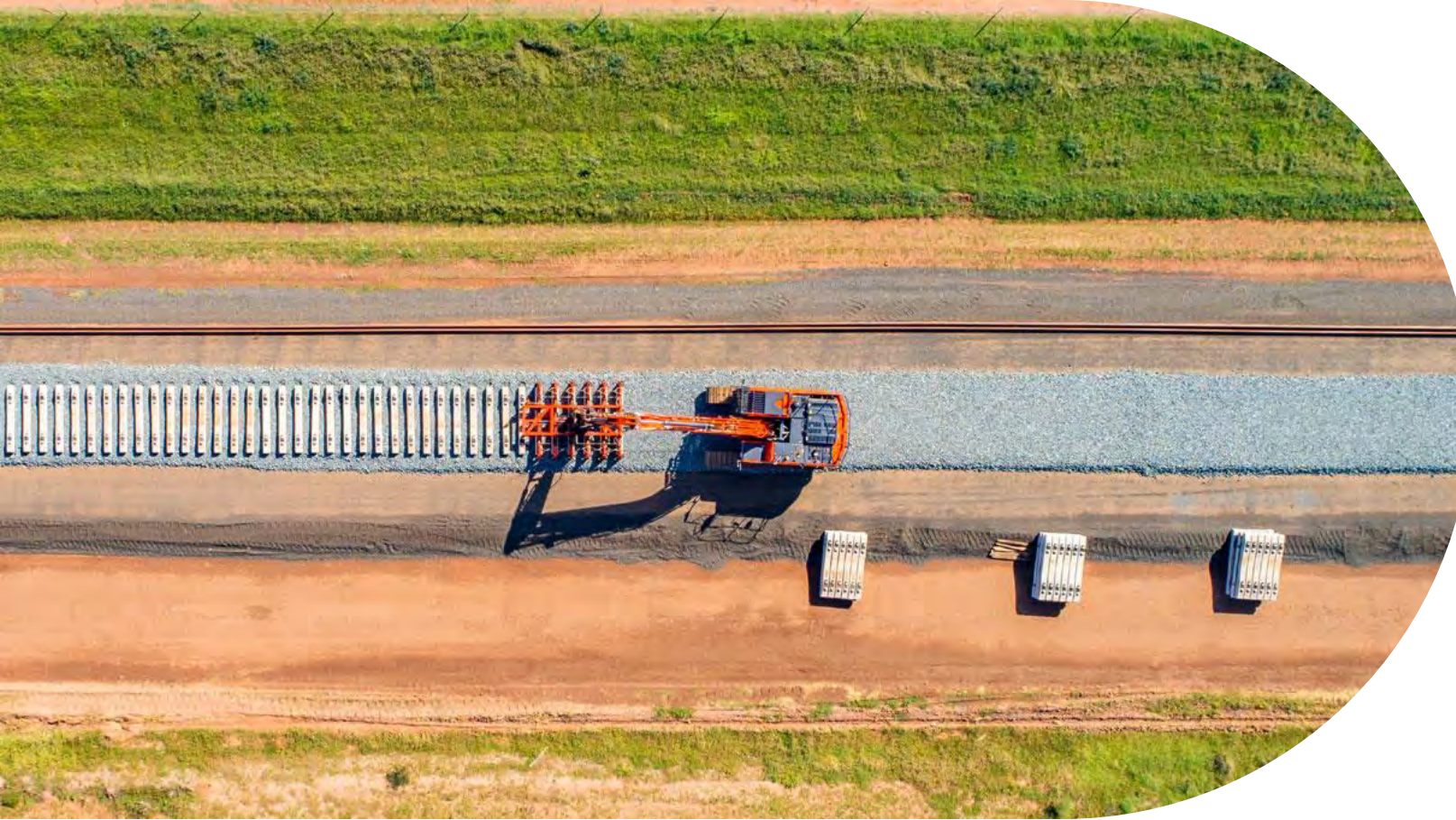


General Business

Garry West – Chair CCC

**INLAND
RAIL** 





Conclusion and confirmation of actions

Garry West – Chair CCC

**INLAND
RAIL** 





Thank you

INLAND
RAIL 