



Albury to Illabo Community Consultative Committee

Wagga Wagga sub-committee

Wednesday 7 May 2025

**INLAND
RAIL** 

Acknowledgement of Country

Inland Rail acknowledges the Traditional Custodians of the land on which we meet today, and pay our respects to their Elders past and present. We extend that respect to Aboriginal and Torres Strait Islander peoples here today.

**INLAND
RAIL** 



Conflicts of interest

Garry West – Chair CCC

INLAND
RAIL

Agenda

- Actions from previous meeting
- Program update
- Project update
- Planning and Environmental update
 - Construction Traffic and Transport Approval Process
 - Operational Noise and Vibration (ONVR)
- Community update
- General Business

Actions from Previous Meetings



LINK TO THE COMMUNITY GRANTS
TO BE CIRCULATED TO COMMITTEE
MEMBERS



PROVIDE LINK IN THE MINUTES TO
THE APPROPRIATE DPHI WEBSITE
WHERE THE SIMP IS LOCATED



AVAILABILITY OF THE UPDATED
BUSHFIRE MANAGEMENT PLAN

Introduction/Presenters

James Kennedy

Delivery Director – A2P

Malcolm Clark

Project Director - A2I/S2P

Rachael Labruyere

Environmental Manager – A2P

Susan Kay

Program Principal Advisor

Kate Hardy

Stakeholder Engagement Lead A2I





Program Update

James Kennedy – Delivery Director A2P

INLAND
RAIL 

Annual Sustainability Report

Highlights

FY24



\$226,144

in community grants
to 70 recipients



27,523

offset credits acquired
in NSW



86% enhancement
of ecological value

verified by the Infrastructure
Sustainability Council on the Narrabri
to North Star Phase 1 project



1,019

local construction-related
jobs created



123 First Nations
workers

on construction projects



3 sustainability
contractor forums



\$78.3m

spent with local businesses
and \$6m spent with
First Nations businesses



53 | **30**
people | businesses

attended workforce development
events held in regional NSW



133 webinars

Inland Rail-developed Business
Sustainability webinars completed*



20,000
tonnes of steel

diverted from landfill on Narrabri
to North Star Phase 1 project



23 construction and
rail skills courses

delivered to 207 participants
by the Inland Rail Skills Academy



549 downloads

of sustainability capacity toolkits
from the Inland Rail website*



167 schools

participated in Inland Rail-supported
STEM activities, taking the total
to 609 schools involved since 2020



11 local business
capability workshops

upskilling 121 local businesses



1,500+ students

participated in Inland Rail-supported
STEM activities in FY24, taking
the total to over 11,500 students
since 2020

Adjacent Projects Update

Illabo to Stockinbingal (I2S)

- Detailed design and consultation
- Site sheds/compounds/laydown establishment
- Ongoing investigations:
 - Biodiversity investigations
 - Geotechnical investigations
 - Utility investigations
 - Heritage investigations

Stockinbingal to Parkes (S2P)

- Working towards closing out Darroobalgie Loop, Wyndham Avenue and Lachlan River Bridge
- Ongoing works at Wirrinya (track slew)
- Surveying and design checks— power poles



Beveridge to Albury (B2A) Update

- **Tranche 1 – first 4 sites in Victoria**
 - March - Project completion at Glenrowan
 - March – Pedestrian underpass opens in Wangaratta
 - April - Seymour-Avenel Road opens to public
 - April – first trains stop at new Wangaratta station platform
- **Tranche 2 – remaining 8 sites in Victoria**
 - Over the last 6 months community engagement for preliminary design on all 8 sites
 - Site establishment and early works commenced across all Tranche 2 sites
 - May – major construction commencing in Euroa



Birkett St level crossing upgrade works for Euroa detour route.

B2A - Green Street Bridge, Wangaratta





Project Update

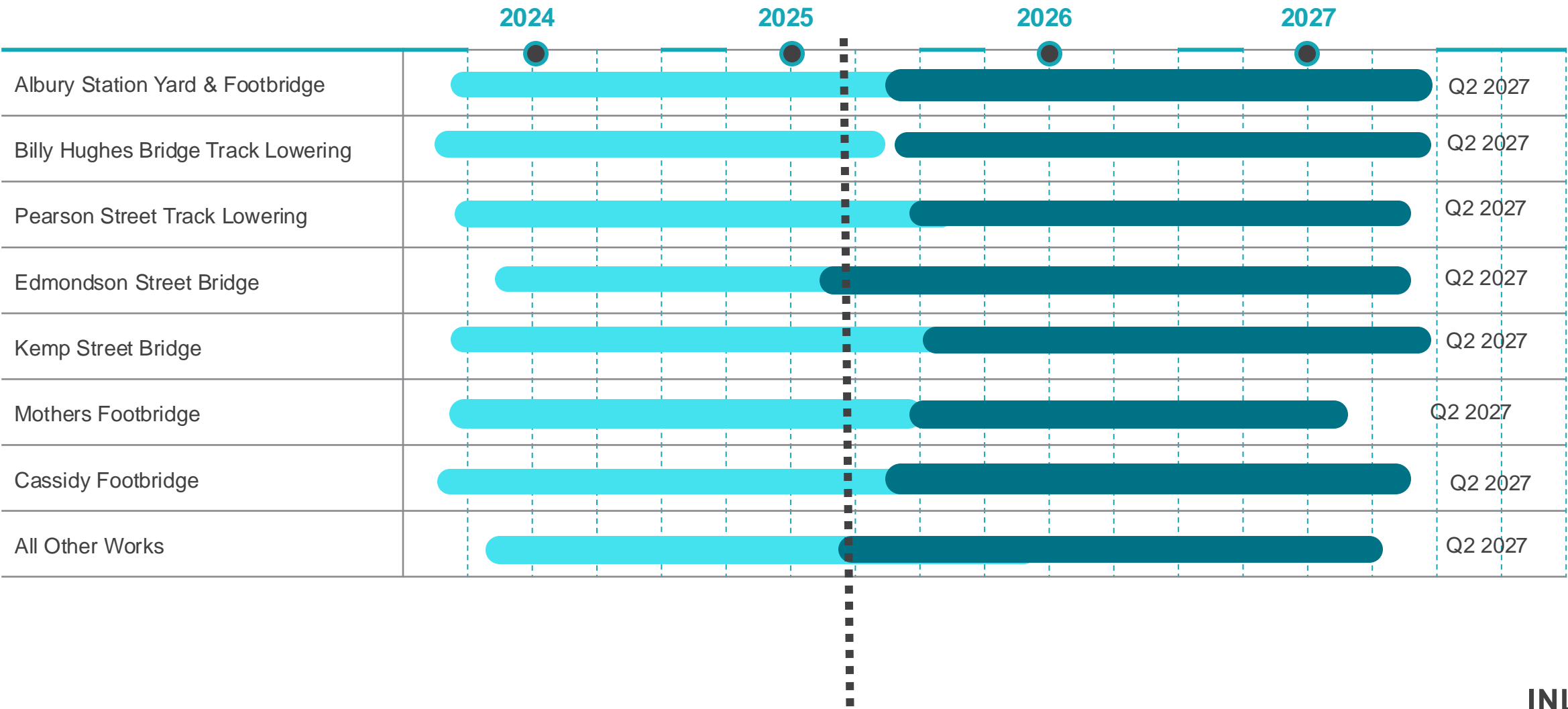
Malcolm Clark – Project Director A2I/S2P

**INLAND
RAIL** 

A2I Program

Design development

Early works & Construction



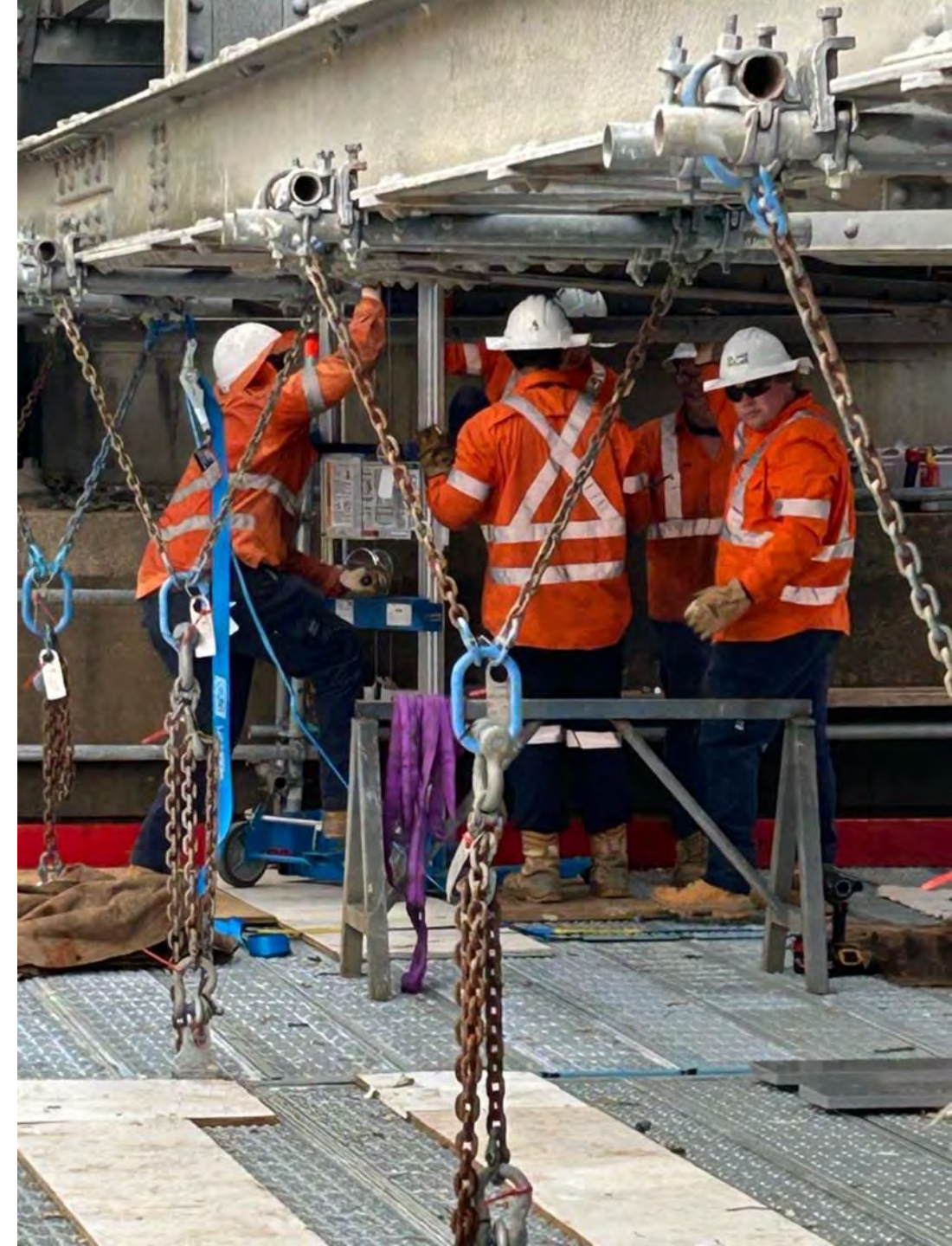


A2I Project Update

- The A2I/S2P Construction Contractor, Martinus, is working through Secondary Environmental Approvals and Detailed Design
- The NSW State Design Review Panel (SDRP) is ongoing, with the 6th SDRP session recently held; Inland Rail are continuing to work with SDRP as the project completes design development
- A2I are moving from Construction Stage A to Stage B
- Enabling works and site compound establishment are continuing around Edmondson St, Kildare College, Bomen, Junee and Illabo.
- Major construction to begin in Q3 2025

March Possession

- Track possession occurred from 6pm on Friday 21 March, to 6pm on Monday 24 March
- Site establishment and construction works across multiple sites in the Junee to Illabo section of A2I were completed over this period as well as other works in S2P
- Works included:
 - Track works
 - Drainage works
 - Track formation reconstruction



May Possession

Works occurring from **Junee to Illabo** from 6am on Saturday 3 May until 3am on Monday 5 May 2025

Overview of works being completed

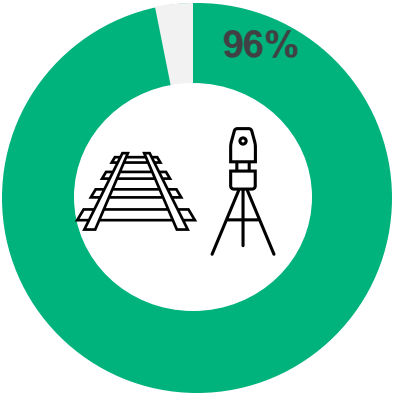
- Delivery of materials and equipment to sites
- Drainage works including culvert extensions
- Track related excavation works
- Track slews and tamping activities



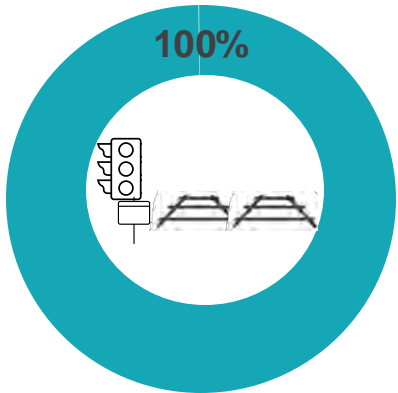
A2I Design Progress

Martinus
Design – ITC
Contract

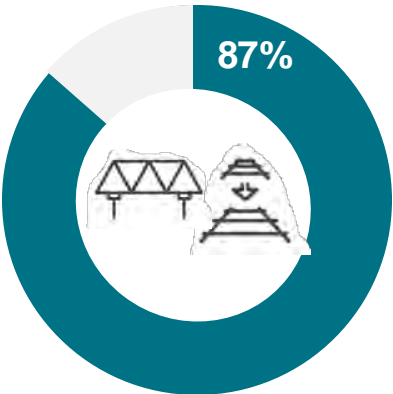
Clearance Sites



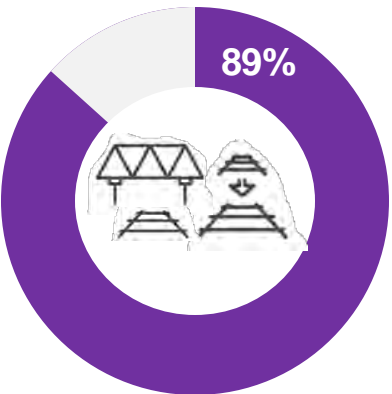
Junee to Illabo



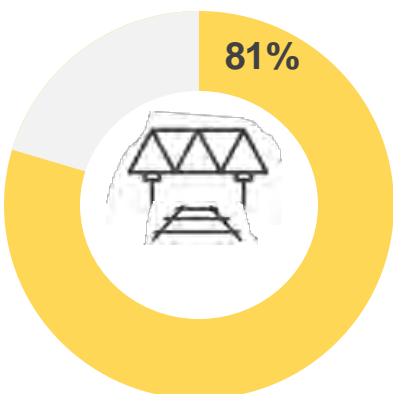
Albury Sites



Wagga Sites



Junee Sites



Cassidy Footbridge



Cassidy Footbridge, Wagga Wagga

3D fly-through

Note: Indicative representation for illustrative purposes only.

Edmondson Street Bridge



Edmondson Street Bridge

3D fly-through

Note: Indicative representation for illustrative purposes only.

Mother's Footbridge



Mother's Bridge - Wagga Wagga Station

3D fly-through

Note: Indicative representation for illustrative purposes only.

Lookahead to September 2025

Timing	Activity
Quarter 2, 2025	<ul style="list-style-type: none">• Continuation of enabling works• Continue Junee to Illabo works in May extended track possession• Commence mobilisation to Albury precinct• Continue preparatory works related to Edmondson St utilities relocations• Carry out geotechnical investigations works related to Edmondson St demolition
Quarter 3, 2025	<ul style="list-style-type: none">• Implement traffic mitigation measures related to Edmondson St (Wagga) and Kemp St (Junee)• Edmondson St Bridge: Relocation of APA medium pressure gas main• Edmondson St Bridge: Final cutover of Essential Energy 66kV electrical overheads• Mobilise Junee / Kemp Street site compound (Junee)• Commence construction of the Junee Train Driver Change Platforms• Establishment of Pearson St site compound (Wagga)• September possession• Construct temporary footbridge access at Cassidy & Wagga Station• Continuation of track works between Junee and Illabo• Commence works in Albury precinct – Albury Station and Billy Hughes Bridge

What we've achieved at S2P!





Planning and Environment

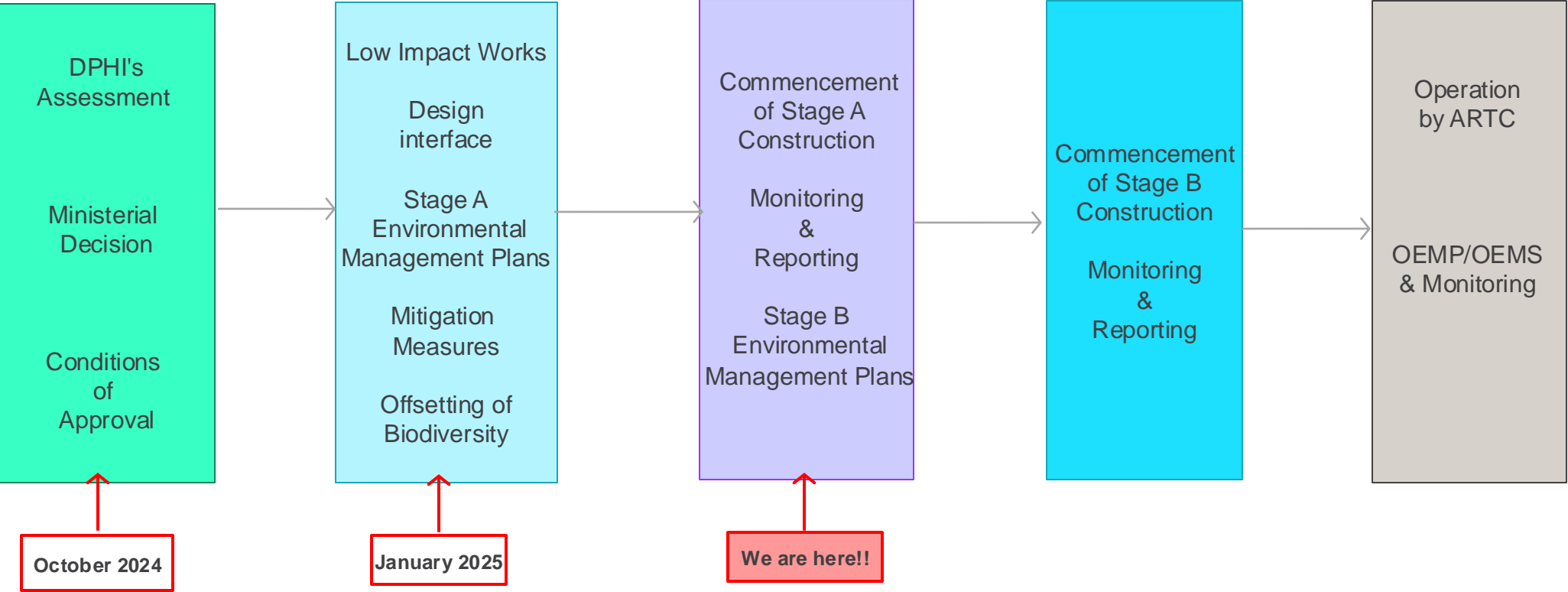
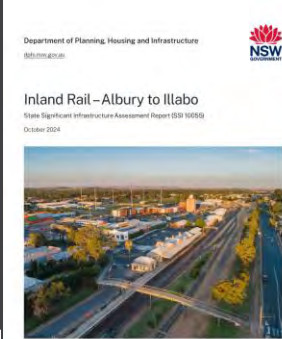
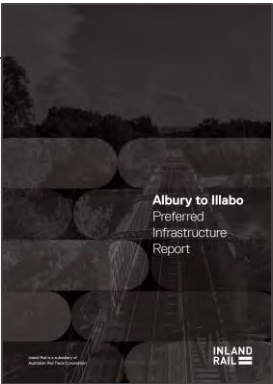
Rachael Labruyere - Environment Manager A2P

**INLAND
RAIL** 



Approvals and Construction

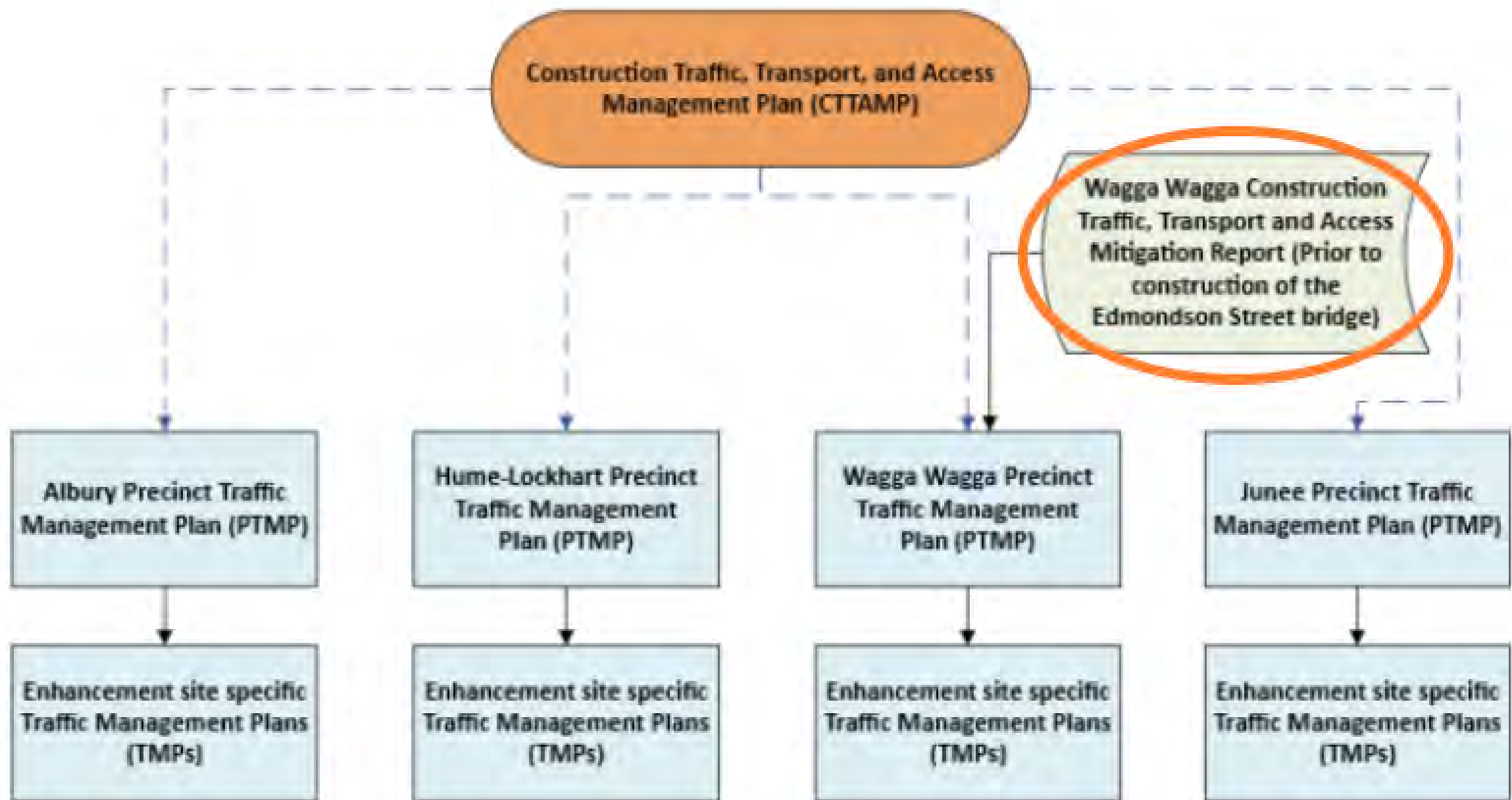
Summary
of findings
Albury to Illabo
Preferred Infrastructure Project





Construction Traffic and Transport Approval Process

INLAND
RAIL 



Conditions of Approval

Traffic, Transport and Access

E133 Maintaining pedestrian and cyclist access during construction.

E134 Consultation with education providers on construction and detour impacts.

E135 Maintaining pedestrian access across two of the three bridges (in Wagga Wagga).

E136 Edmondson Street traffic diversions and construction traffic mitigation measures, speed limitations, service targets and consultation requirements.

E137 Wagga Wagga Construction Traffic Transport and Access Mitigation Report and requirements.

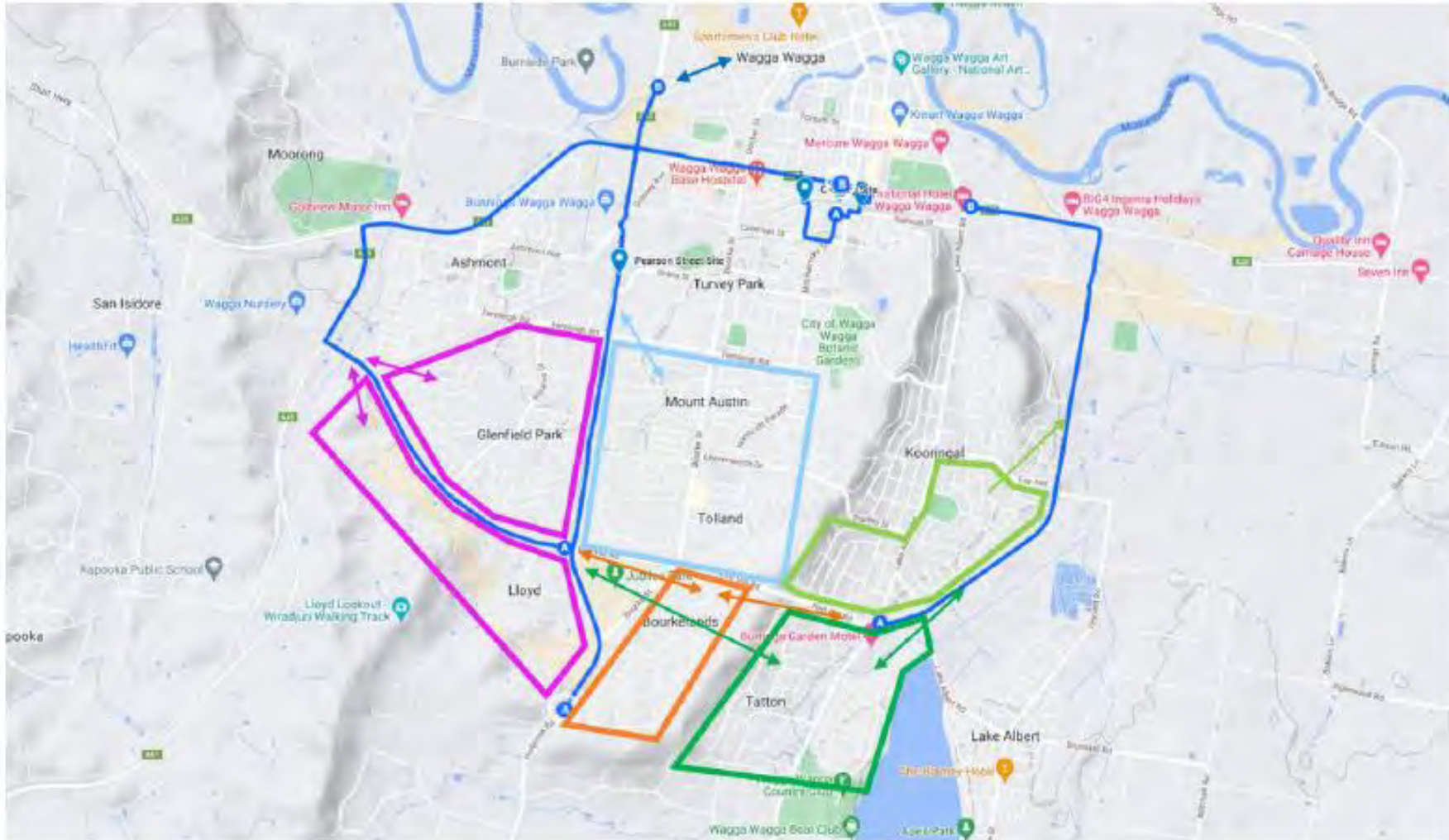


Construction Traffic and Transport Approval Process

Report	Purpose and Inclusions	Status
Wagga Wagga Construction Traffic, Transport and Access Mitigation Report	<ul style="list-style-type: none">• Condition of Approval requirement• Mitigation measures• Consultation with TfNSW and Council• Edmondson Street Closure details including intersections, communications strategy and detour routes.	<ul style="list-style-type: none">• Stakeholder Review• May workshop - comment assessment (mid-May)• Final approval scheduled (early-July)
Construction Transport and Access Management Plan (CTTAMP)	<ul style="list-style-type: none">• Condition of Approval requirement• Monitoring and implementation of mitigation measures• Details management measures during construction for pedestrians, active transport users, emergency services, buses, road dilapidation requirements, haulage routes etc.	<ul style="list-style-type: none">• Stakeholder Review• Final approval scheduled (early-July)
Wagga Wagga Precinct Traffic Management Plan (PTMP)	<ul style="list-style-type: none">• Specific details for the Wagga Wagga area from the information in the CTTAMP	<ul style="list-style-type: none">• Issued for stakeholder review in May• Final approval (early-July)

Note: Once all reports approved by DPHI individual Traffic Management Plans and Roads Act Approvals (ROL/Section 138) are obtained for each location.

Construction Traffic and Transport Approval Process



There are several alternate routes between the southern suburbs of Wagga Wagga and the Central Business District (CBD) which although slightly longer travel distances, play a crucial role in preserving overall network functionality by redistributing traffic volumes away from congested corridors (Dockers Street and Lake Albert Road) during construction.

By encouraging commuters to adopt less trafficked routes the critical corridors (Dockers and Lake Albert Road) will experience a lower demand and reduced queuing. This in turn improves the overall level of service at key intersections, as signal phasing and coordination become more responsive to localised, rather than funnelled network-wide, demand.

Commuters travelling along these critical corridors benefit from less delay and more reliable travel times.



Operational Noise and Vibration

Susan Kay – Program Principal Advisor

INLAND
RAIL 

Operational Noise and Vibration

Preferred Infrastructure Report (PIR) included concept mitigation measures:

- **Wagga:**
 - 5 noise walls (4-5 m high), 129 at-property treatments and LNCP
- **Junee:**
 - 1 noise wall (5m high), 23 at-property treatments and LNCP
- **The Rock:**
 - 24 at-property treatments and LNCP
- **Yerong Creek:**
 - 13 at-property treatments and LNCP

LNCP is the **Locomotive Noise Control Program** and aims to install exhaust silencers on older, noisier locomotives to prevent noise emanating from the source, providing the most effective mitigation overall



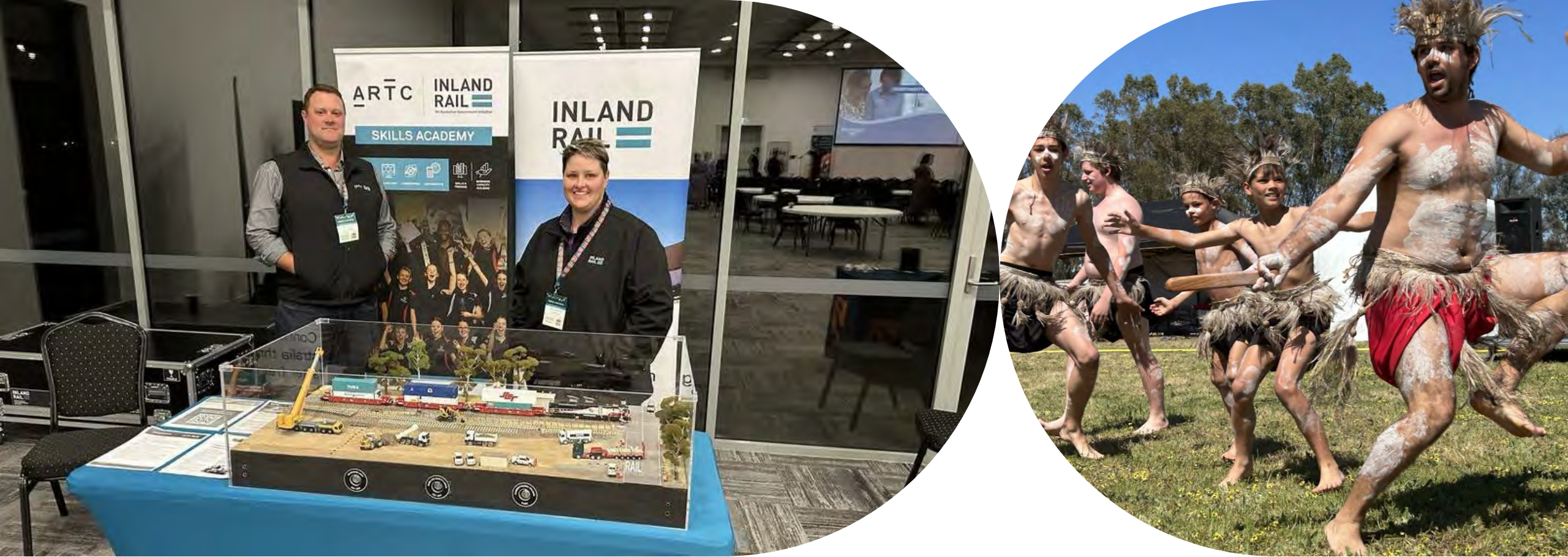
Concept noise wall locations Wagga Wagga (PIR)



Operational Noise and Vibration Review (ONVR)

What is the ONVR?

- ONVR is IRPL's commitment to noise mitigation
- Updated noise model based on the final project design. Includes new noise and vibration monitoring and PN locomotive data
- Incorporates community feedback on mitigation options
- Prior to the LNCP being included in the ONVR, DPHI requires submission of an LNCP Report to demonstrate effectiveness
- LNCP Report is in draft
- ONVR will commence mid-year and incorporate community feedback



Community Update

Kate Hardy – Stakeholder Engagement Lead A2I

**INLAND
RAIL**

Engagement Update

- Continuing our work with Councils and key stakeholders along the A2I alignment through regular engagement
- Monthly monitoring meetings with Councils and our delivery partner, Martinus
- Meet the Contractor events for I2S (JHG) - Wagga and Cootamundra, March 17 and 18
- Meet the Contractor event for A2I (Martinus) held in Wagga 10 April
- STEM on Track events – Wagga and Albury, April 1-3
- SMART Workshop Tours – Albury, Culcairn, March 24-27
- Junee engagement regarding Kemp St modifications – meetings with Council, schools, door knocks and community information stall



STEM on Track Discovery Day Albury



Upcoming Community Engagement Activities

- Quarter 2 - Councillor briefings occurring throughout May 2025
- Martinus *'Meet the Contractor'* event, Albury 8 May 2025
- Community drop in information sessions
- Door knock local residents – visualisations
- Planning for Henty Field Days and local shows along the A2I alignment
- SMART Workshop Tours – Lockhart LGA and Wagga LGAs, Term 2



First Nations Partnerships

- First Nations Cultural Appreciation Tours
 - Albury – 28 February
 - Wagga – 8 April
- Mentor panel discussion with STARS program in Albury on 1 April





Community Benefits

A2I - S2P

July 2023
to January 2025

586
people

have worked on the
Inland Rail project



55

of whom are
First Nations
People

173 local
residents

have worked on this project

29

of whom are local
and First Nations People



57

women
employed

39

tradespeople
employed

61

people employed for 26 weeks or over
for a minimum of 15 hours a week



121

local businesses
have supplied to
the project

5

First Nations
businesses
Australia-wide



\$12M

total spend
with local
businesses

\$426K

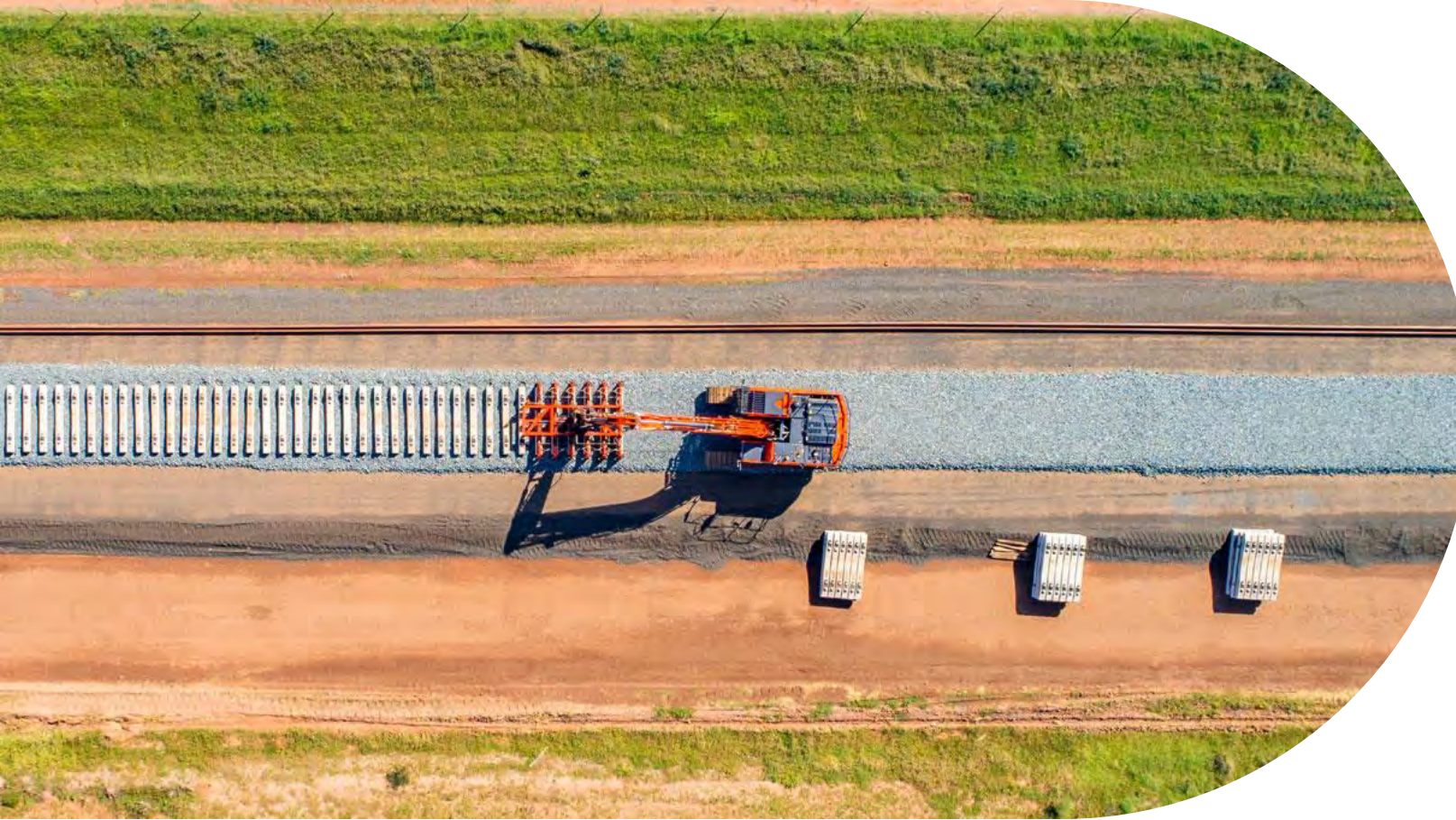
total spend with
First Nations businesses
Australia-wide



General Business

Garry West – Chair CCC

**INLAND
RAIL** 



Conclusion and confirmation of actions

Garry West – Chair CCC

INLAND
RAIL 





Thank you

INLAND
RAIL 