



Illabo to Stockinbingal Community Consultative Committee

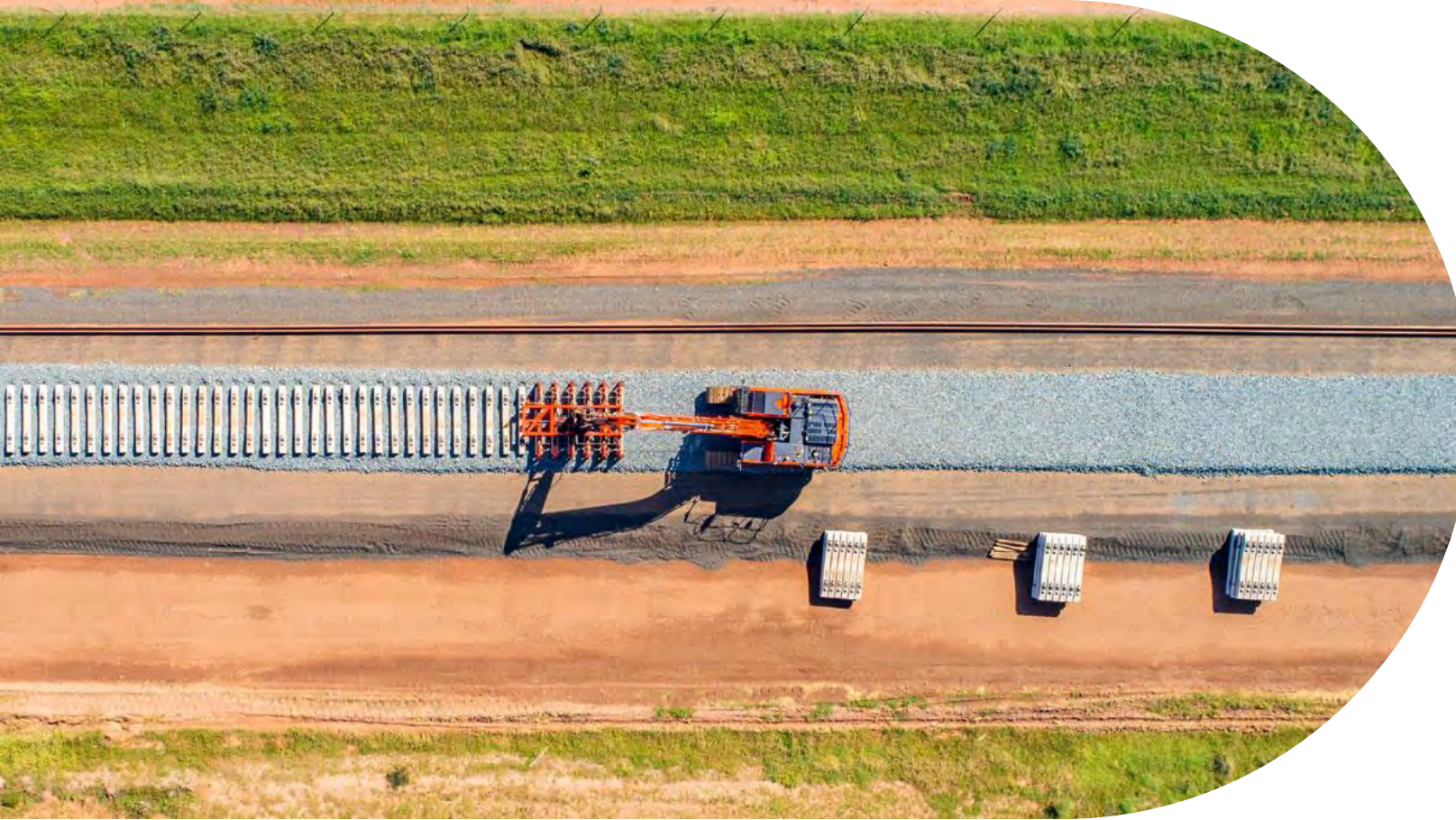
Cootamundra

8 May 2025

Acknowledgement of Country

Inland Rail acknowledges the Traditional Custodians of the land on which we meet today, and pay our respects to their Elders past and present. We extend that respect to Aboriginal and Torres Strait Islander peoples here today.

**INLAND
RAIL** 



Conflicts of interest

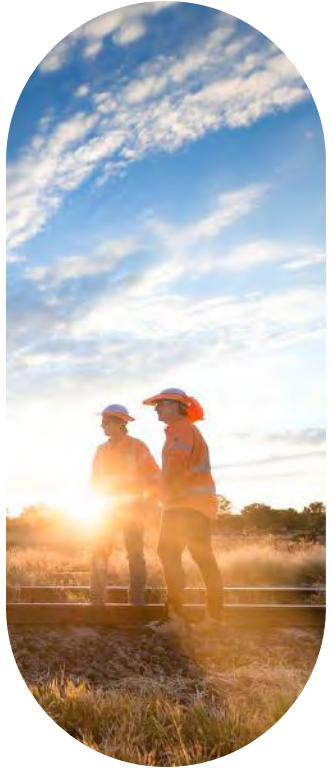
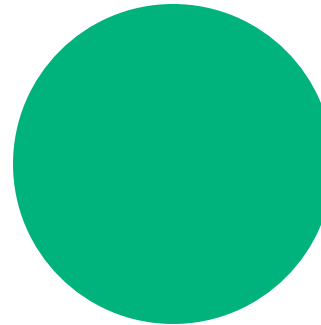
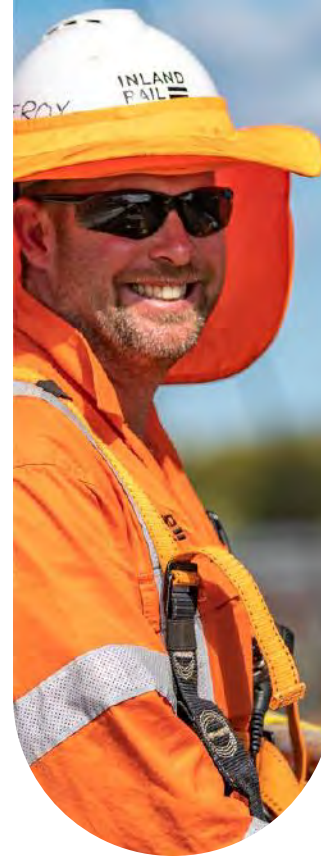
Garry West – Chair CCC

**INLAND
RAIL** 



Agenda

1. Actions from Previous Meeting
2. Program overview
3. Adjacent Projects Update
4. Project Update
5. Planning and Environmental Update
6. Operational Noise and Vibration
7. Engagement Update
8. General Business



Actions from previous meeting

Item	Action
General arrangement design of Burley Griffin Way bridge at Stockinbingal	Addressed in Project Update of this presentation
Noise modelling and mitigation	Covered in Planning and Environment section of this presentation
Review project communications methods	Covered in Community Update section of this presentation
Provide CCC members link to EIS assessment of workforce accommodation camp	Link distributed via email by CCC Chair on 17 March

Introduction/Presenters

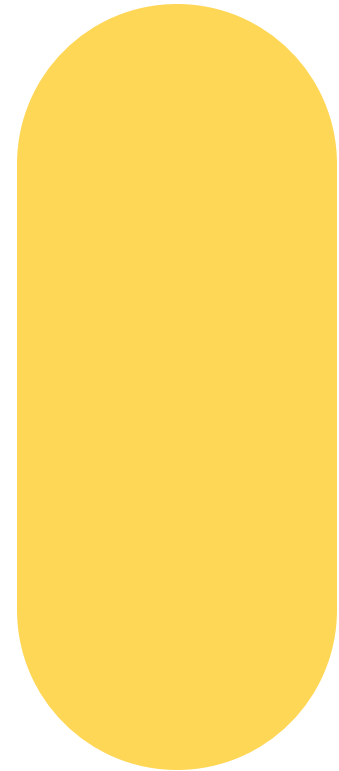
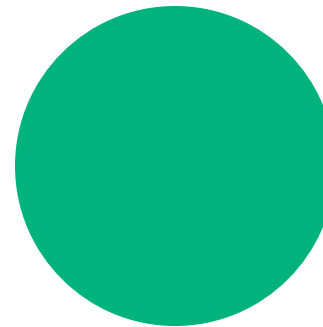
James Kennedy
Delivery Director – A2P

Conrad Strachan
Project Director – I2S

Rachael Labruyere
Environmental Manager – A2P

Susan Kay
Program Principal Advisor

Eleanor Falkiner
Stakeholder Engagement Lead





Program update

James Kennedy – Delivery Director - A2P

**INLAND
RAIL** 



What you can expect to see in 2025



Inland Rail Team mobilisation – our team will be on site and in towns, from site inspections to door knocks and community events



Contractor (John Holland) mobilisation – John Holland are on site along the alignment completing early enabling works. In the second half of 2025 you can expect to see the commencement of construction across many sites.



You will also see an increased presence from Martinus, the delivery contractor for the Albury to Illabo (A2I) section of the project, in the Illabo area

Annual Sustainability Report



*Data was impacted by a change from Google Universal Analytics to GA4. Data is only reliable after 1 Jan 2024.

Adjacent Projects Update

Albury to Illabo (A2I)

- State Approval received in October 2024
- Contractor Martinus is currently working through detailed design and secondary approvals
- Enabling works near Edmondson Street Bridge to be undertaken in Q1 2025, includes electricity pole relocations and gas relocations
- Major construction to begin in Q3 2025

Stockinbingal to Parkes (S2P)

- Closing out Daroobalgie Loop and Lachlan River Bridge
- Surveying and design checks— power poles
- Works expected to be completed mid 2025



Beveridge to Albury (B2A) Update

Tranche 1 – first 4 sites in Victoria

- March - Project completion at Glenrowan
- March – Pedestrian underpass opens in Wangaratta
- April - Seymour-Avenel Road opens to public
- April – first trains stop at new Wangaratta station platform

Tranche 2 – remaining 8 sites in Victoria

- Over the last 6 months community engagement for preliminary design on all 8 sites
- Site establishment and early works commenced across all Tranche 2 sites
- May – major construction commencing in Euroa



Birkett St level crossing upgrade works for Euroa detour route.

B2A - Green Street Bridge, Wangaratta





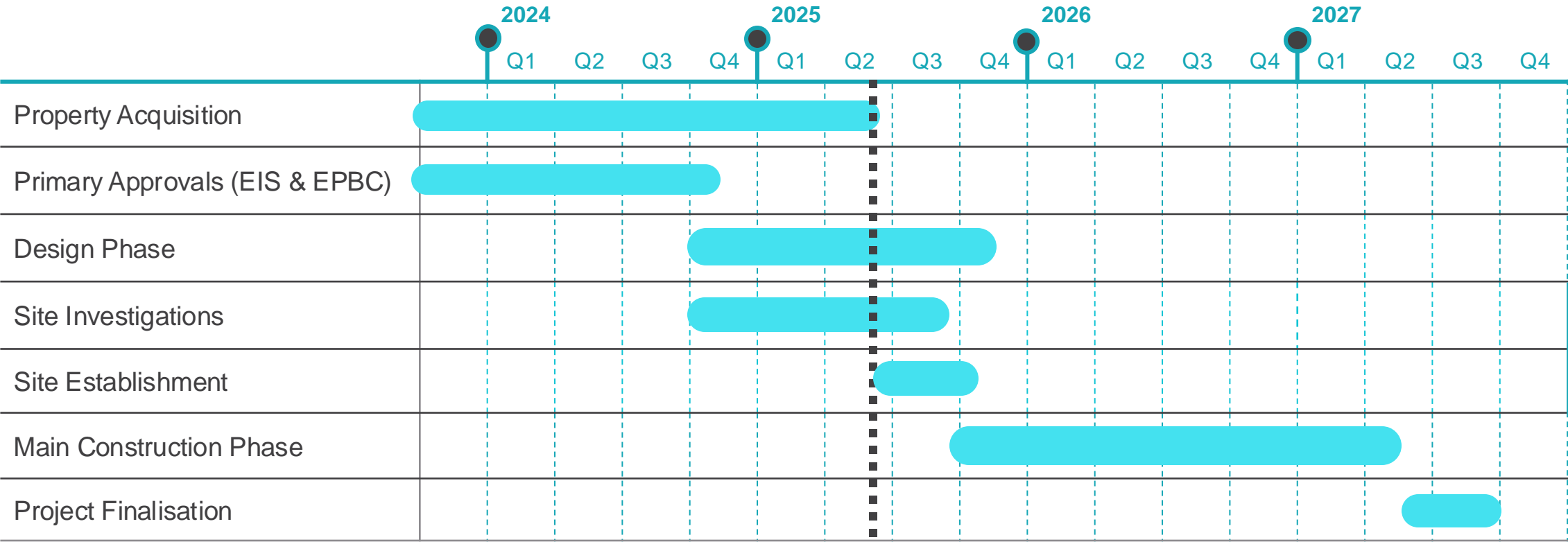
Project update

Conrad Strachan – Project Director I2S

**INLAND
RAIL** 



Illabo to Stockinbingal Program



Three month lookahead

- Ongoing investigations including:
 - Biodiversity investigations
 - Geotechnical investigations
 - Utility investigations & relocations
 - Heritage investigations
- Rail Possession – 3-5 May 2025
- Management Plan development
- Design development and consultation
- Procurement
- Site sheds/compounds/laydown establishment
- Temporary Workers' Accommodation establishment at Stockinbingal



Utility Relocations

- Utilities relocation designs continuing in Q2 2025, these works include:
 - Goldenfields Water relocation
 - APA Gas relocation
 - Communications relocations (Telstra, NBN and Optus)
- Consultation with key stakeholders will be undertaken on designs of relocated services



Temporary Workers' Accommodation, Stockinbingal



Grogan Road

Indicative design only

Temporary Workers' Accommodation, Stockinbingal

- Grogan Road, Stockinbingal between Racecourse Lane and McLaughlins Lane
- Site Area: 7.7ha
- location assessed in the NSW Government Planning approval / Inland Rail EIS
- Consultation underway to develop a Social Impact Management Plan
- the Plan must be endorsed by the Environmental Representative and submitted to the Planning Secretary for approval one (1) month prior to establishment of the accommodation facility
- Camp Establishment period Jun-25 – Aug-25



Temporary Workers' Accommodation

- Specialist private camp operator to set up, manage, demobilise camp for duration of project
- Accommodate up to 350+ beds
- Demobilised at the end of use and site rehabilitated
- Code of Conduct for all employees/contractors

The accommodation facility will include the following facilities:

- Room including desk and ensuite
- Administration office
- Kitchen and dining facilities
- Car, bus and truck parking
- Recreation room and gymnasium
- Laundry facilities
- Landscaping



Traffic management around camp

- Transport – Buses have designated pickup/drop off zone within camp
- Traffic control measures – signage, speed limit changes, traffic control to be confirmed with Cootamundra Gundagai Council
- Working Hours
 - 7am – 6pm Monday to Friday
 - 7am – 6pm Saturday
 - No time on Sunday/Public Holidays
- Staff Roster - 14 days on/7 days off
 - Buses transporting workers from regional airports to Site
 - Bus transport workers to site and back each day



Utility requirements for Camp

- Areas of hardstand for carparking and demountables
- Potable Water – mains connection or water trucks (subject to approvals)
- Sewerage/Wastewater – stored onsite in tanks and trucked offsite
- Electricity – connected to network or onsite generators
- Telecommunications – Satellite (eg Starlink)
- Final details determined when contract awarded to private operator



Burley Griffin Way, Stockinbingal

Visualisation of works

[Illabo to Stockinbingal: Works & Planning Information - Inland Rail](#)



Indicative design visualisation only

- Removal of existing Burley Griffin Way Level Crossing





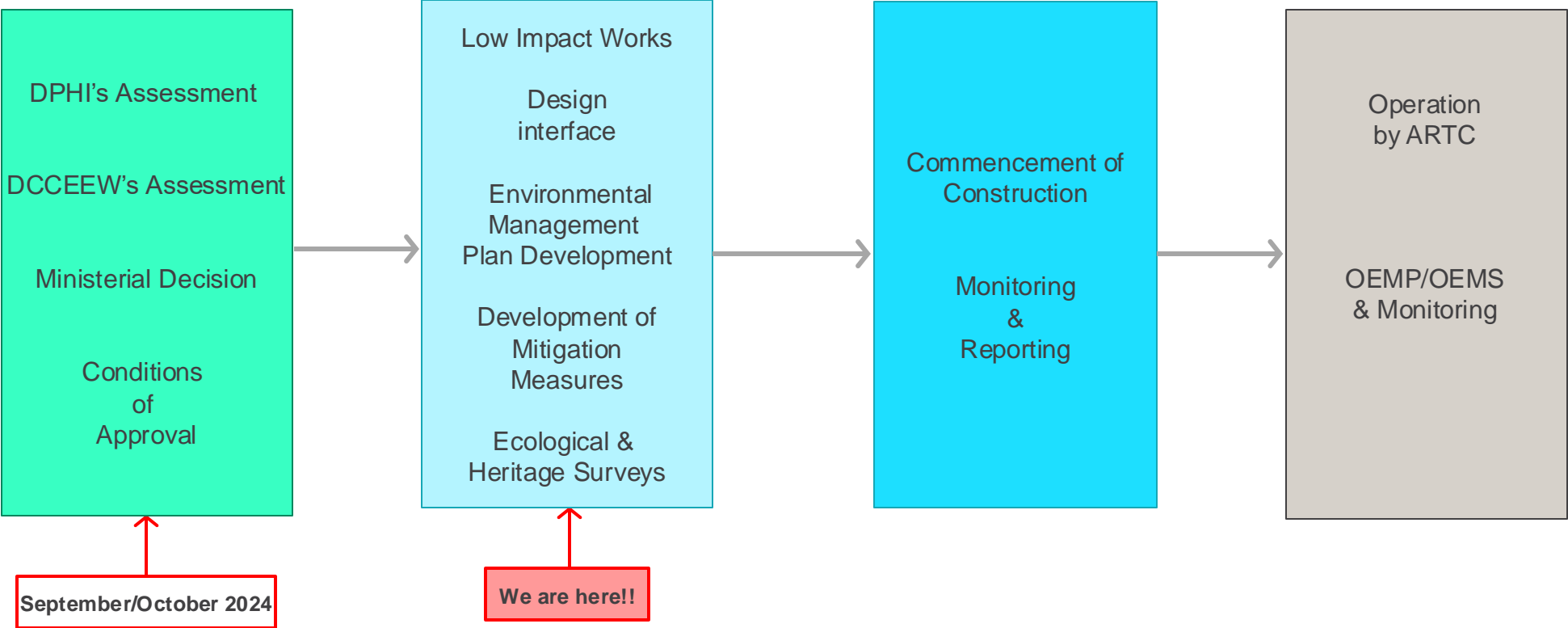
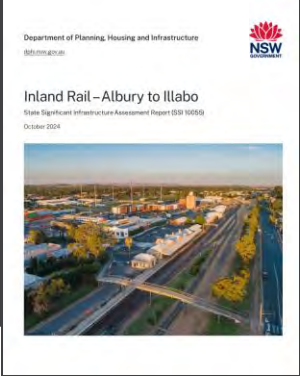
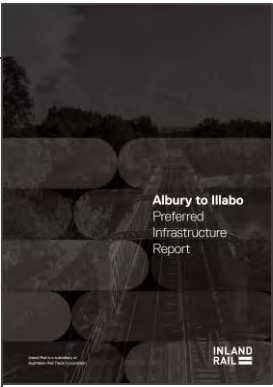
Planning and Environment

Rachael Labruyere

INLAND
RAIL 



Approvals and Construction



Hydrology

- Design of railway drainage has strict criteria around changes to flood behaviours and discharge of water
- Investigations and field studies inform the design (ongoing)
- Conditions of Approval (29 total)
- Peer Review and Consultation



Conditions of Approval – Flooding and Hydrology

E47 All practicable measures to be implemented to ensure the CSSI will not adversely affect flood behaviour, cause erosion, siltation, destruction of riparian vegetation or impact on watercourses.

E48 Flood modelling to be undertaken during design including an assessment of the associated flood impacts.

E54 and E55 The CSSI must be designed to meet or improve on flood performance from the reference design within the Quantitative Design Limits for flooding

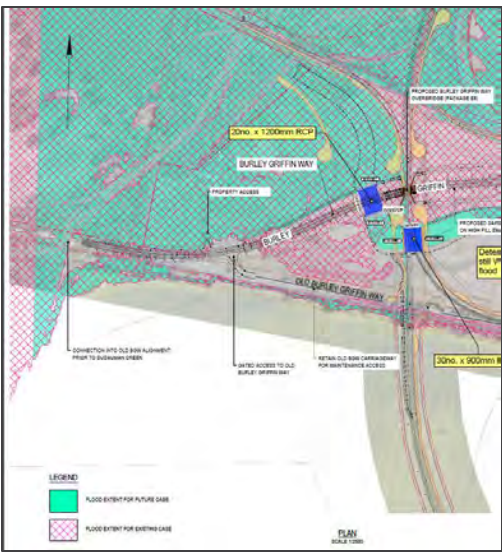
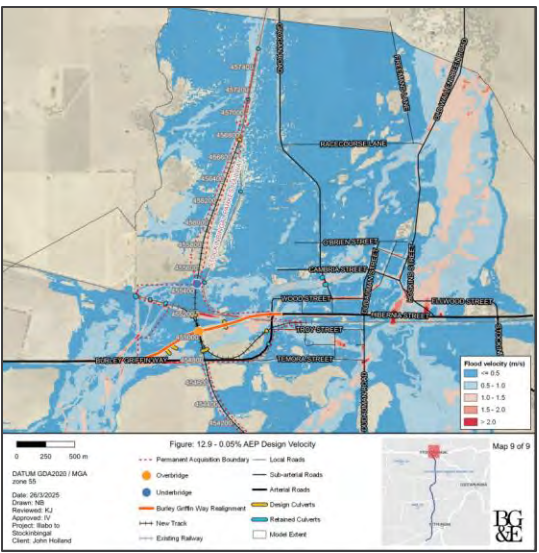
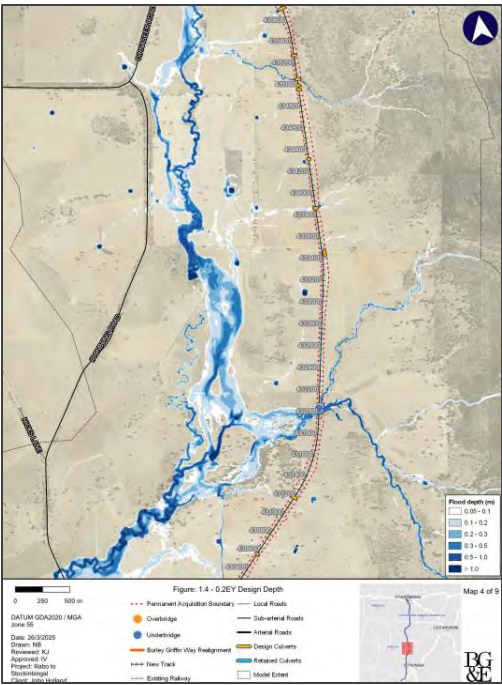
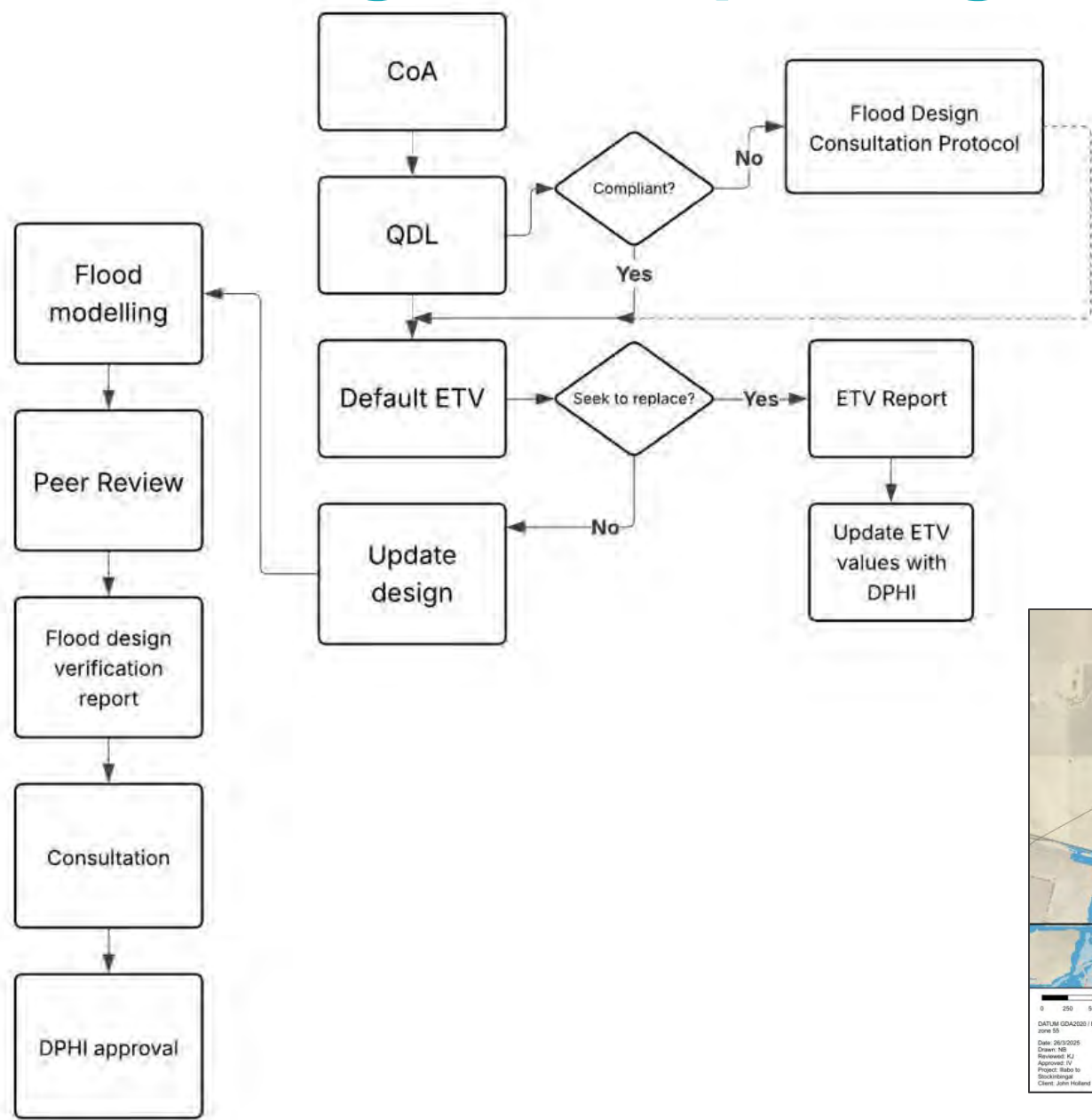
E64 A Flood Design Verification Report must be prepared to demonstrate compliance of the CSSI design.

E66 The Flood Design Verification Report must be submitted to the Planning Secretary for approval

E71 Following substation completion and for 15 years of operation Flood Review Reports must be prepared.



Flood Modelling and Reporting Process



I2S – Ecological Surveys

- Completion of the Summer and Autumn Woodland Bird Surveys
- Commencement of Squirrel Glider Surveys
- Surveys are aimed at determining fauna movements and controls to be implemented during construction and mitigations post construction.
- The survey timing and periods has been based on the number of sightings of species throughout the year.
- Surveyors will be trapping and tracking the gliders during the day and night between May and July 2025
- Use of collars to track squirrel glider movements
- Survey results are used to inform the Fauna Connectivity Strategy.





Operational Noise and Vibration

Susan Kay – Program Principal Advisor

**INLAND
RAIL** 



Operational Noise and Vibration Review (ONVR)

- Rail and Road ONVR
- **Rail:** EIS identified 6 residential and 2 non-residential exceedances:
 - Stockinbingal – 4 residential and 2 non-residential exceedances
 - Bethungra / Illabo Junction – 1 residential exceedance
 - Illabo – 1 residential exceedance
- **Road:** EIS identified 1 residential exceedance in Stockinbingal
- Operational Noise and Vibration Review is based on the final project design and is IRPL's commitment to mitigation. Includes:
 - Updated noise model
 - Results of façade inspection for non-residential receivers (internal criteria) – rail only
 - Community consultation
- Verified by an independent expert and approved by DPHI

Operational Noise Mitigation

- The EIS identified at-property treatments as the most reasonable and feasible mitigation measure for residential properties
- The type of property treatment is dependent on the type of property, the impacted rooms and the exceedance above the criteria
 - Includes air conditioning, ceiling fans, upgraded glazing, solid core doors, blocking gaps in eaves - tailored to each property
- Locomotive Noise Control Program will benefit I2S. Targets four locomotive classes (C, CLF, AN and EL)
- Following completion of ONVR, the scope of work for each property will be developed in consultation with property owners.

Operational Noise CoAs

- **E15** - Prepare an ONVR (rail) in consultation with EPA and impacted sensitive receivers
- **E16** - Operational rail noise monitoring within 1 year and after 10 years of operation
- **E17** - Prepare an ONVR (road) in consultation with EPA and impacted sensitive receivers
- **E18** - Operational road noise monitoring within 1 year and after 10 years of operation
- **E19** - Measures identified in ONVRs must be implemented
- **E20** - Timing of implementation of mitigation measures



Community Update

Eleanor Falkiner – Stakeholder Engagement Lead I2S

**INLAND
RAIL** 



Engagement Review

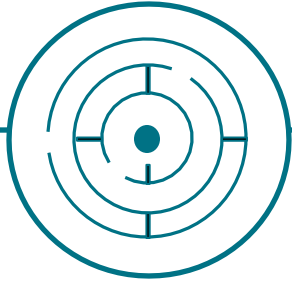
- I2S Team have reviewed communications methods, channels and distribution lists
- Working with John Holland on a program of comprehensive consultation
 - Project Updates and Fact Sheets to directly and indirectly impacted landowners (5-10km from the alignment)
 - Community Drop In Sessions in Junee and Illabo
 - Presentations to Community Groups in Stockinbingal
 - Advertising in local papers and social media
 - Community Drop In Session Stockinbingal
 - Utilising Council communications channels
 - Seeking feedback on how/where community likes to receive information



Engagement Overview Q1 2025

ACTIVITY	PURPOSE
Establish Monthly meetings with Junee and Cootamundra – Gundagai Regional Councils	<ul style="list-style-type: none">• introduce John Holland,• review management plans and• manage MIRDA commitments
Meet the Contractor Events – 17 & 18 March <ul style="list-style-type: none">• Cootamundra (approx. 140 attendees)• Wagga Wagga (approx. 90 attendees)	<ul style="list-style-type: none">• Introduce John Holland to the community & local business• Inform of employment & training opportunities
STEM on Track events – Wagga and Albury, April 1-3	Build STEM capability in local schools & communities
Social Impact Management Plan Consultation – April	<ul style="list-style-type: none">• CoA E109, E110• Develop SIMP to mitigate impacts from construction & operation
Land Access negotiations for Low Impact Works / Site Investigations	Inform design, construction and operation of Inland Rail
Communication & Engagement Review	<ul style="list-style-type: none">• Increase awareness of project• improve communications reach and outline channels for feedback

Social Impact Management Plan Engagement approach

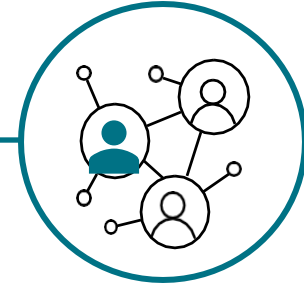


Targeted Engagement

Focused engagement with specific stakeholder groups on social impacts most relevant to their particular business, interests, or community.



- Councils
- Emergency services
- Business and industry
- Aboriginal and First Nations
- Education and Employment
- Community Groups and services
- Tourism and Accommodation
- Nearby projects



Broader engagement

Community drop-in session in Junee and Illabo, posters and community feedback survey.

I2S social impact themes

Workforce
Management

Community Health
and Wellbeing

Housing
availability and
affordability

Community
Engagement

Industry
Participation

Cumulative
impacts from other
infrastructure
projects.

SIMP Consultation Outcomes

- Approx 16 meetings held, received feedback from 47 stakeholders
- Top Issues; impact on local traffic (harvest, Burley Griffin Way, driver etiquette), engaging local workforce and industry, communication methods, cumulative impacts
- Outcomes (examples)
 - Specialised consultation on hydrology and the camp in Stockinbingal
 - Consultation with local group fire captains Illabo and Stockinbingal
 - Legacy Projects
 - Bus operator consultation
- Next Steps
 - Survey available to the community until 16/05/25
 - SIMP plan submitted to IR and ER and DPHI
 - SIMP publicly available
 - Monitored Quarterly and reported against every 6 months



Upcoming engagement activities – Q2 2025

ACTIVITY	TIMING
Detailed Design Consultation with private landowners	May to July
Social Impact Management Plan consultation	w/c 28 April w/c 5 May
Community Drop In Sessions Junee and Illabo	Monday 5 May
Presentation to Stockinbingal Community Group	w/c 5 May
Ecological Surveys including woodland bird surveys and squirrel glider surveys	May – July
Establishment Works of Temporary Workers Accommodation – Stockinbingal	TBC – June to August
Consultation, Awareness and Education pre-construction	June – September





General Business

Garry West – Chair CCC

INLAND
RAIL 





Conclusion and confirmation of actions

Garry West – Chair CCC

**INLAND
RAIL** 





Thank you

INLAND
RAIL 