



<b>Inland Rail – Illabo to Stockinbingal</b> Premise Boundary Map EPL Number – 22021 Revision – 01 Sheet 1 of 27	<b>Drafted:</b> Ryan Maxwell	<b>Legend</b> <div><div></div> EPL Premise Boundary</div> <div><div></div> Cadastral/Property Boundary</div> <div><div></div> Chainage marker</div>
	<b>Reviewed:</b> Dan Lidbetter	
	<b>Approved:</b> Andy Robertson	
	<b>Issue date:</b> 11/08/2025	





**Inland Rail – Illabo to Stockinbingal**

Premise Boundary Map  
EPL Number – 22021  
Revision – 01  
Sheet 2 of 27




**Drafted:** Ryan Maxwell

**Reviewed:** Dan Lidbetter

**Approved:** Andy Robertson

**Issue date:** 11/08/2025

**Legend**

-  EPL Premise Boundary
-  Cadastral/Property Boundary
-  Chainage marker





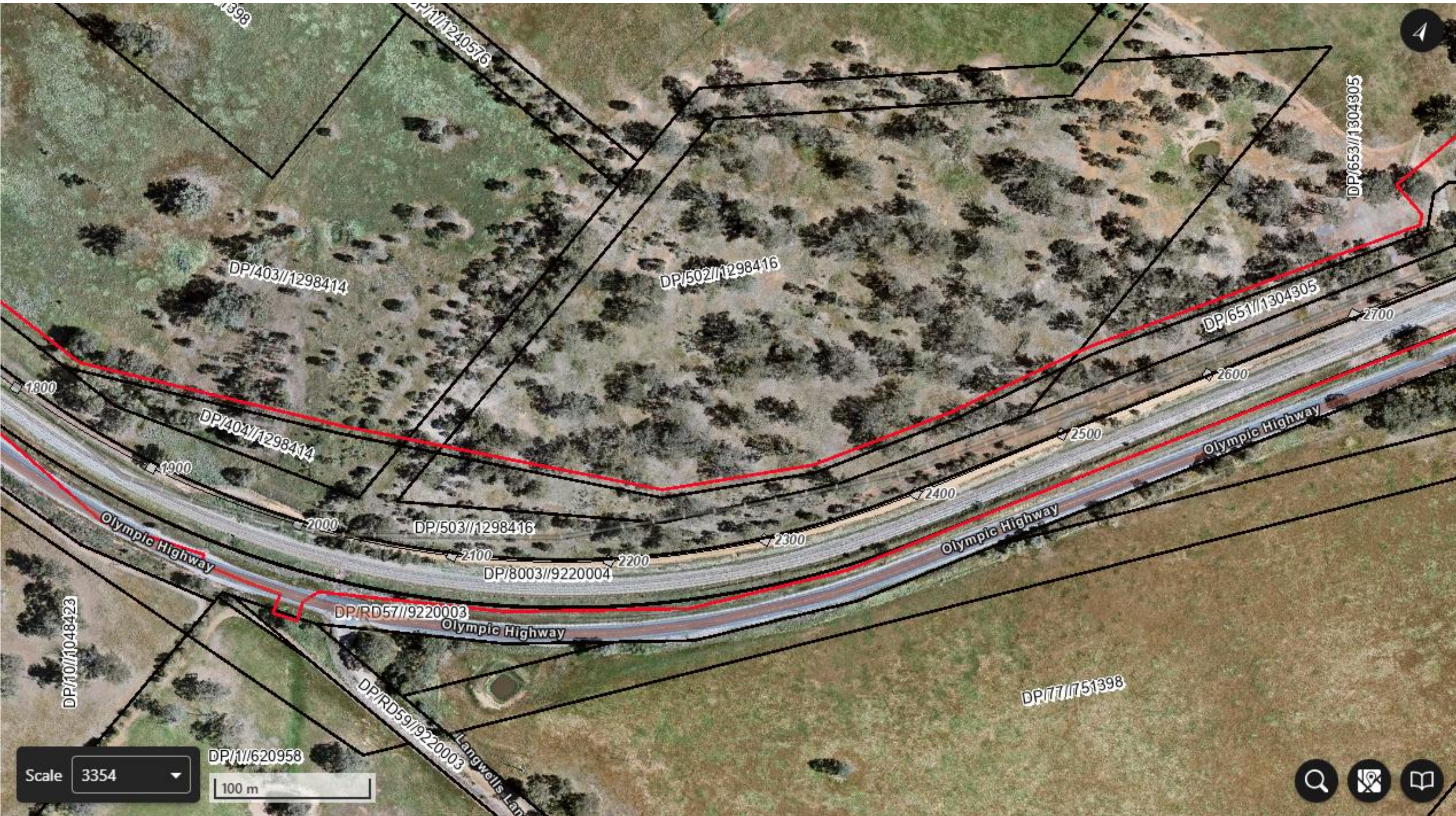
<b>Inland Rail – Illabo to Stockinbingal</b> Premise Boundary Map EPL Number – 22021 Revision – 01 Sheet 3 of 27	<b>Drafted:</b> Ryan Maxwell	<b>Legend</b>  — EPL Premise Boundary — Cadastral/Property Boundary ◆ Chainage marker
	<b>Reviewed:</b> Dan Lidbetter	
	<b>Approved:</b> Andy Robertson	
	<b>Issue date:</b> 11/08/2025	





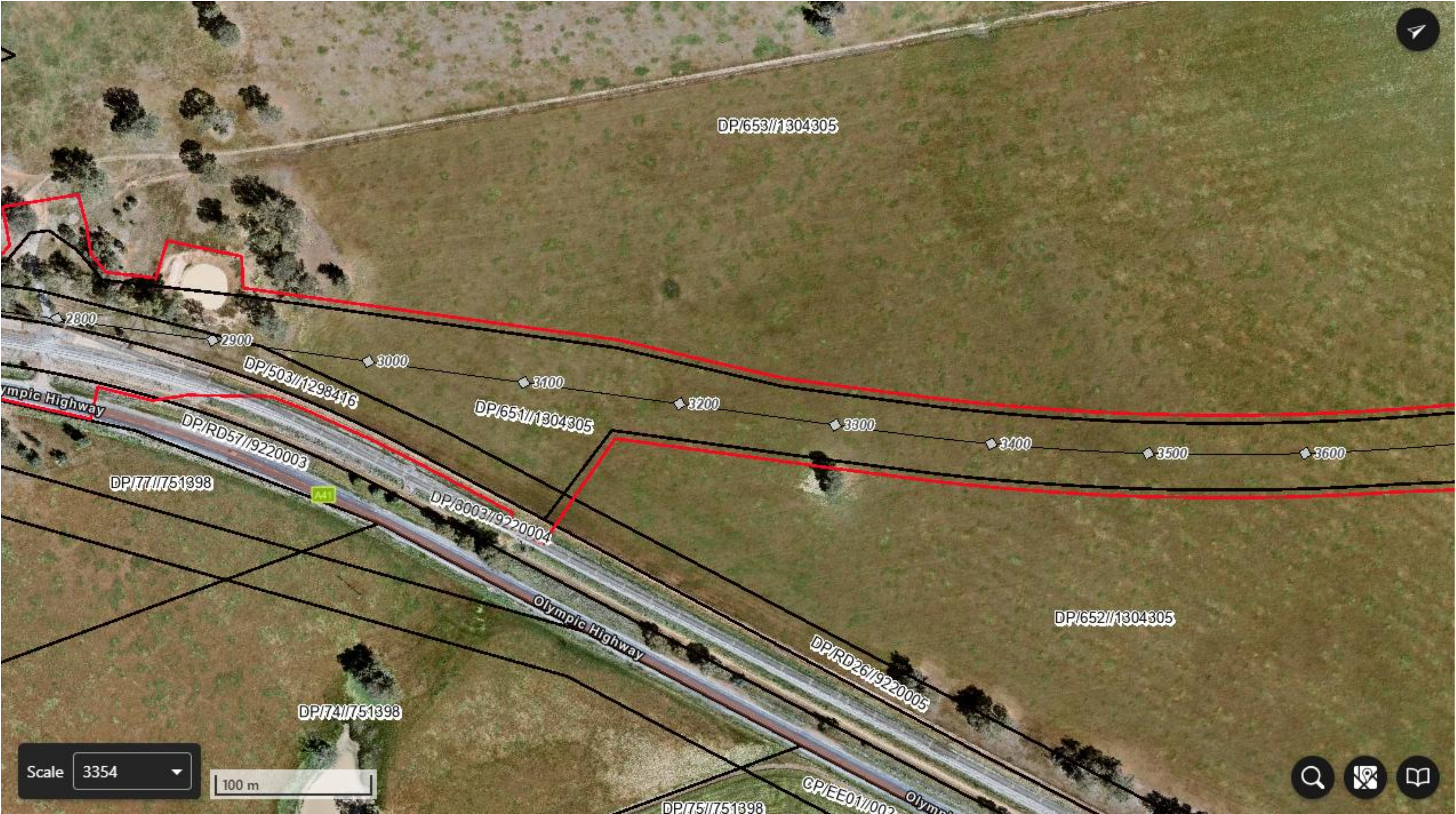
<b>Inland Rail – Illabo to Stockinbingal</b> Premise Boundary Map EPL Number – 22021 Revision – 01 Sheet 4 of 27	<b>Drafted:</b> Ryan Maxwell	<b>Legend</b> <div><div></div> EPL Premise Boundary</div> <div><div></div> Cadastral/Property Boundary</div> <div><div></div> Chainage marker</div>
	<b>Reviewed:</b> Dan Lidbetter	
	<b>Approved:</b> Andy Robertson	
	<b>Issue date:</b> 11/08/2025	





<b>Inland Rail – Illabo to Stockinbingal</b> Premise Boundary Map EPL Number – 22021 Revision – 01 Sheet 5 of 27	<b>Drafted:</b> Ryan Maxwell	<b>Legend</b> <div><div></div> EPL Premise Boundary</div> <div><div></div> Cadastral/Property Boundary</div> <div><div></div> Chainage marker</div>
	<b>Reviewed:</b> Dan Lidbetter	
	<b>Approved:</b> Andy Robertson	
	<b>Issue date:</b> 11/08/2025	





**Inland Rail – Illabo to Stockinbingal**

Premise Boundary Map  
EPL Number – 22021  
Revision – 01  
Sheet 6 of 27

**Drafted:** Ryan Maxwell

**Reviewed:** Dan Lidbetter

**Approved:** Andy Robertson

**Issue date:** 11/08/2025

**Legend**

- EPL Premise Boundary
- Cadastral/Property Boundary
- ◆ Chainage marker





**Inland Rail – Illabo to Stockinbingal**

Premise Boundary Map  
EPL Number – 22021  
Revision – 01  
Sheet 7 of 27

**Drafted:** Ryan Maxwell

**Reviewed:** Dan Lidbetter

**Approved:** Andy Robertson

**Issue date:** 11/08/2025

**Legend**

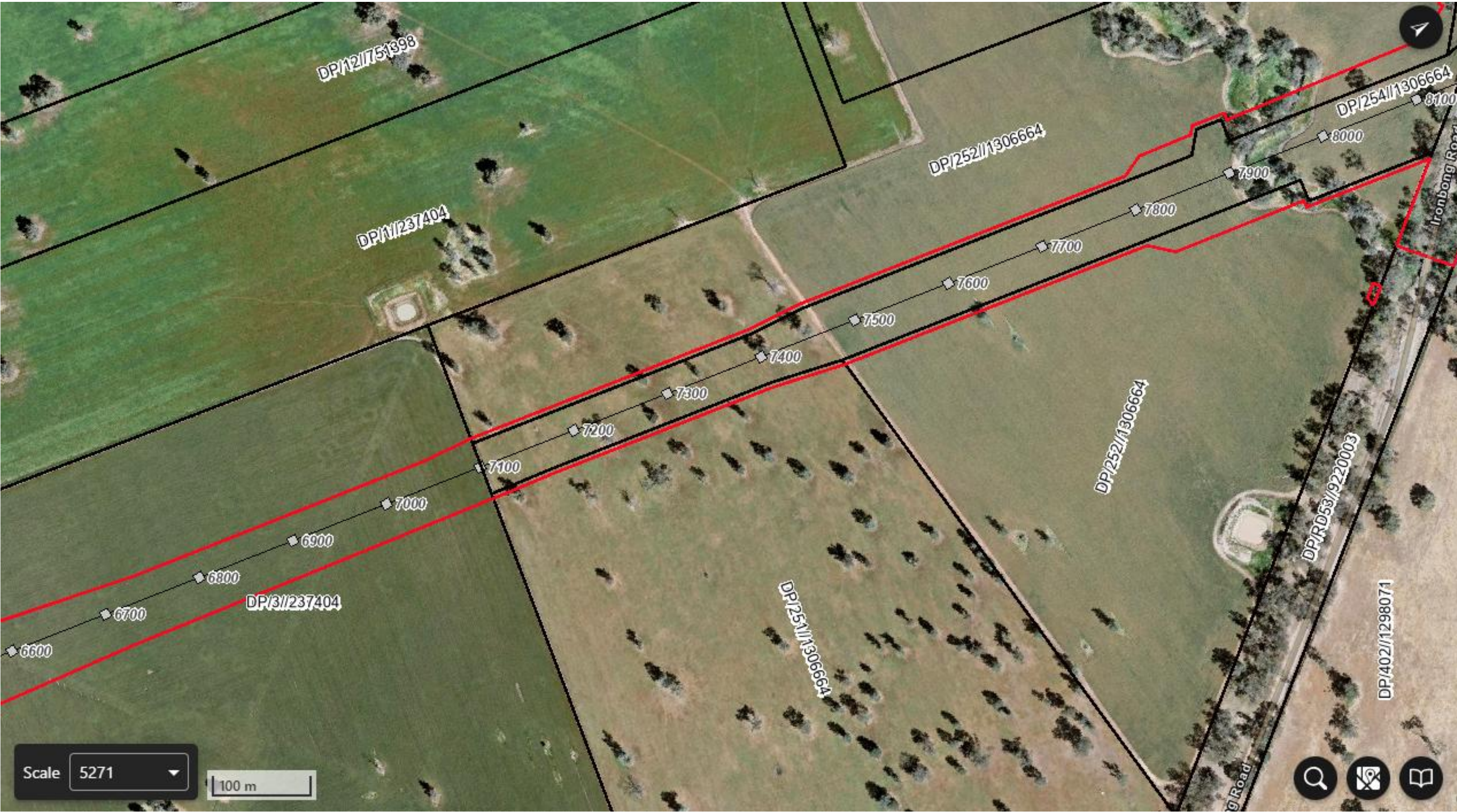
- EPL Premise Boundary
- Cadastral/Property Boundary
- ◆ Chainage marker





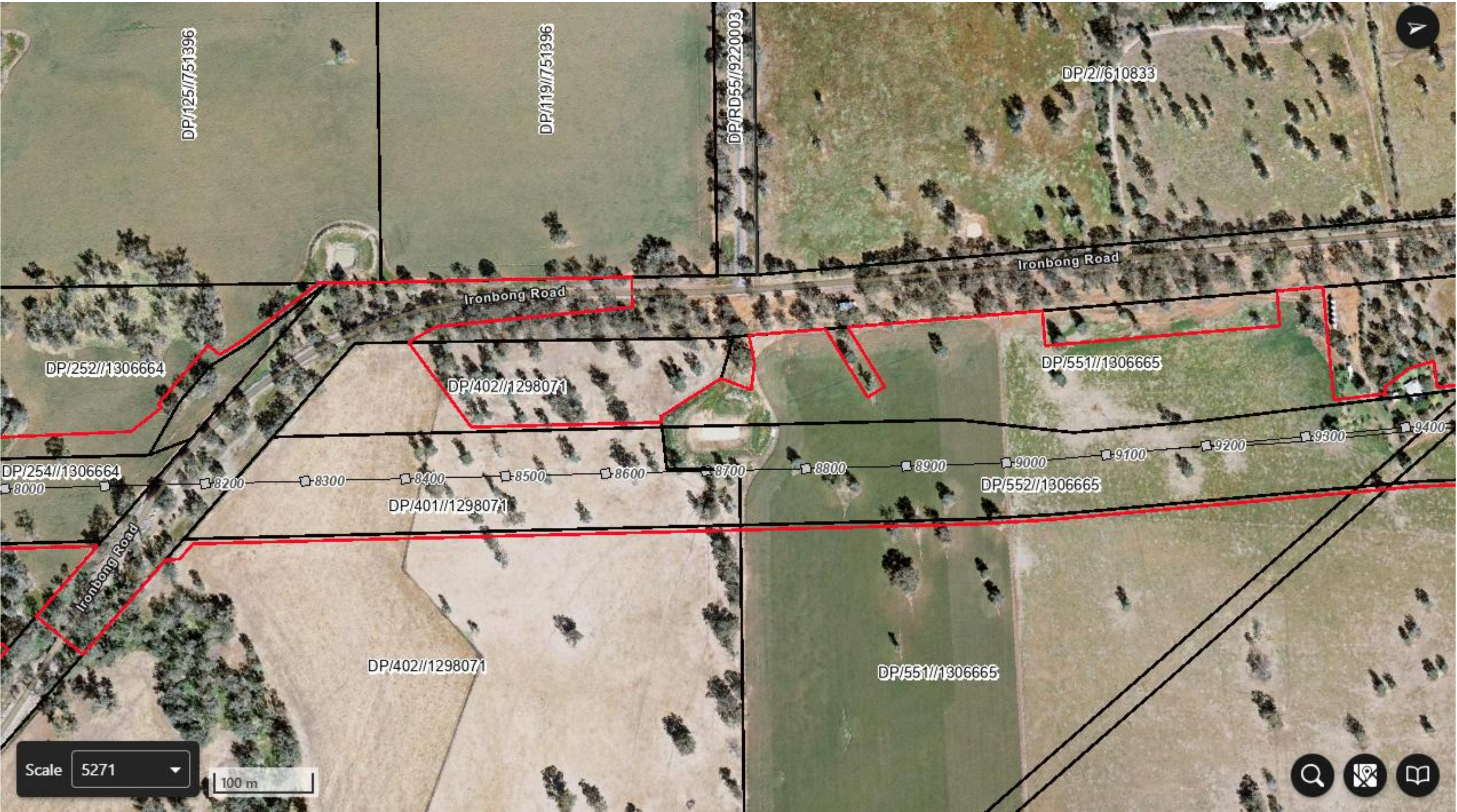
<b>Inland Rail – Illabo to Stockinbingal</b> Premise Boundary Map EPL Number – 22021 Revision – 01 Sheet 8 of 27	<b>Drafted:</b> Ryan Maxwell	<b>Legend</b>  — EPL Premise Boundary — Cadastral/Property Boundary ◆ Chainage marker
	<b>Reviewed:</b> Dan Lidbetter	
	<b>Approved:</b> Andy Robertson	
	<b>Issue date:</b> 11/08/2025	





<b>Inland Rail – Illabo to Stockinbingal</b> Premise Boundary Map EPL Number – 22021 Revision – 01 Sheet 9 of 27	<b>Drafted:</b> Ryan Maxwell	<b>Legend</b>  — EPL Premise Boundary — Cadastral/Property Boundary ◆ Chainage marker
	<b>Reviewed:</b> Dan Lidbetter	
	<b>Approved:</b> Andy Robertson	
	<b>Issue date:</b> 11/08/2025	





**Inland Rail – Illabo to Stockinbingal**  
Premise Boundary Map  
EPL Number – 22021  
Revision – 01  
Sheet 10 of 27

**Drafted:** Ryan Maxwell

**Reviewed:** Dan Lidbetter

**Approved:** Andy Robertson

**Issue date:** 11/08/2025

**Legend**

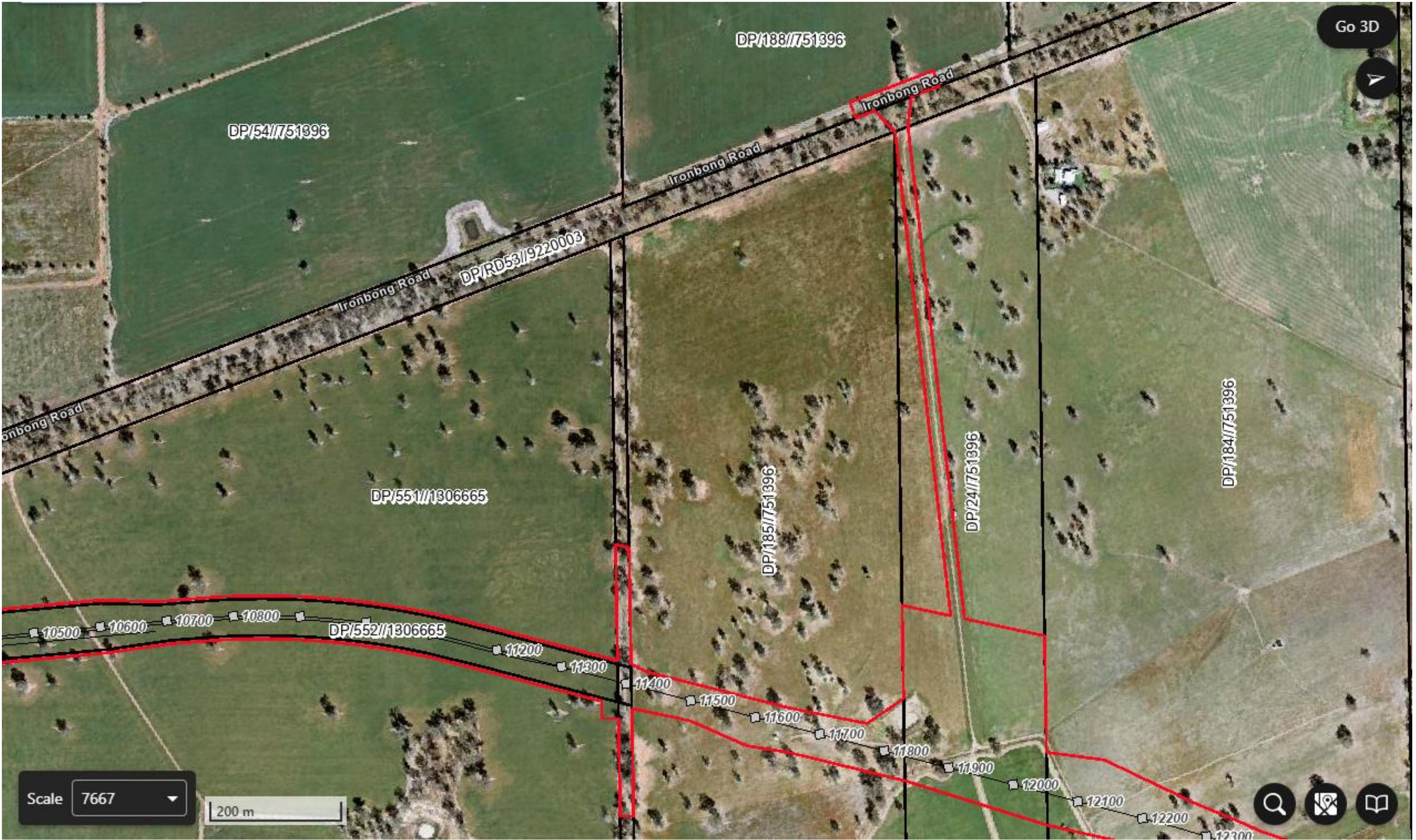
- EPL Premise Boundary
- Cadastral/Property Boundary
- ◆ Chainage marker





<b>Inland Rail – Illabo to Stockinbingal</b> Premise Boundary Map EPL Number – 22021 Revision – 01 Sheet 11 of 27	<b>Drafted:</b> Ryan Maxwell	<b>Legend</b>  — EPL Premise Boundary — Cadastral/Property Boundary ◆ Chainage marker
	<b>Reviewed:</b> Dan Lidbetter	
	<b>Approved:</b> Andy Robertson	
	<b>Issue date:</b> 11/08/2025	





**Inland Rail – Illabo to Stockinbingal**

Premise Boundary Map  
EPL Number – 22021  
Revision – 01  
Sheet 12 of 27

**Drafted:** Ryan Maxwell

**Reviewed:** Dan Lidbetter

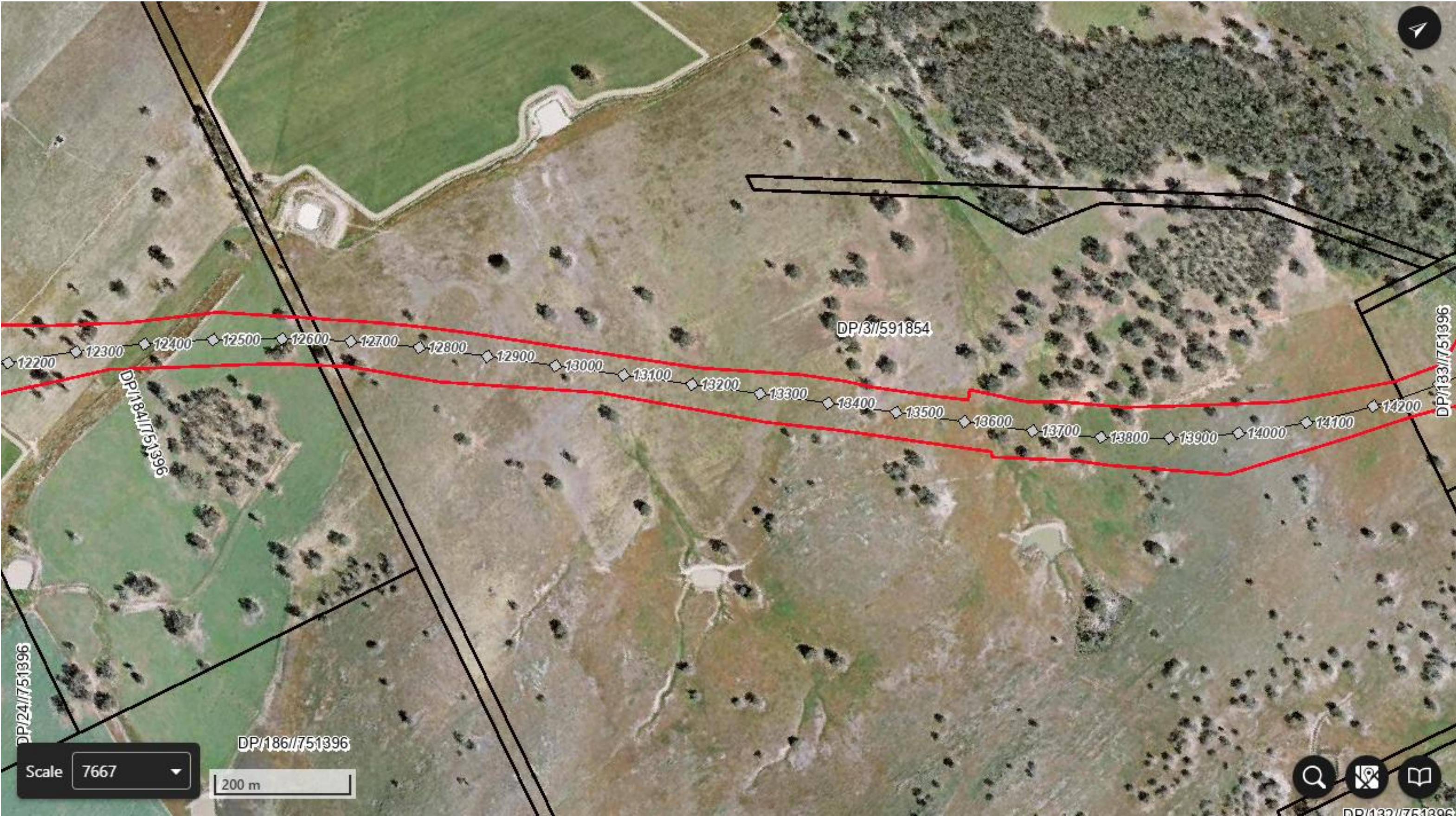
**Approved:** Andy Robertson

**Issue date:** 11/08/2025

**Legend**

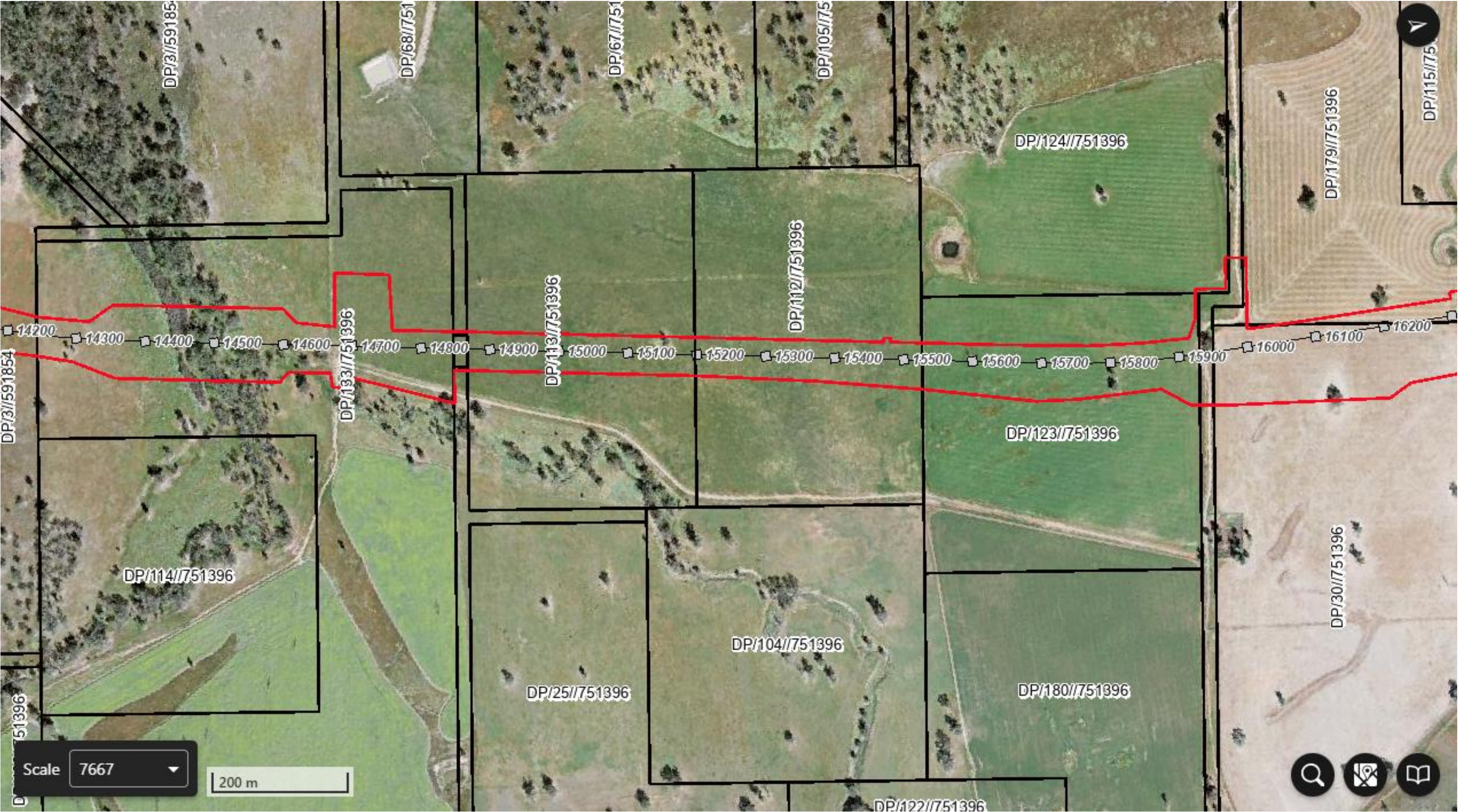
- EPL Premise Boundary
- Cadastral/Property Boundary
- ◆ Chainage marker





<b>Inland Rail – Illabo to Stockinbingal</b> Premise Boundary Map EPL Number – 22021 Revision – 01 Sheet 13 of 27	<b>Drafted:</b> Ryan Maxwell	<b>Legend</b>  — EPL Premise Boundary — Cadastral/Property Boundary ◆ Chainage marker
	<b>Reviewed:</b> Dan Lidbetter	
	<b>Approved:</b> Andy Robertson	
	<b>Issue date:</b> 11/08/2025	



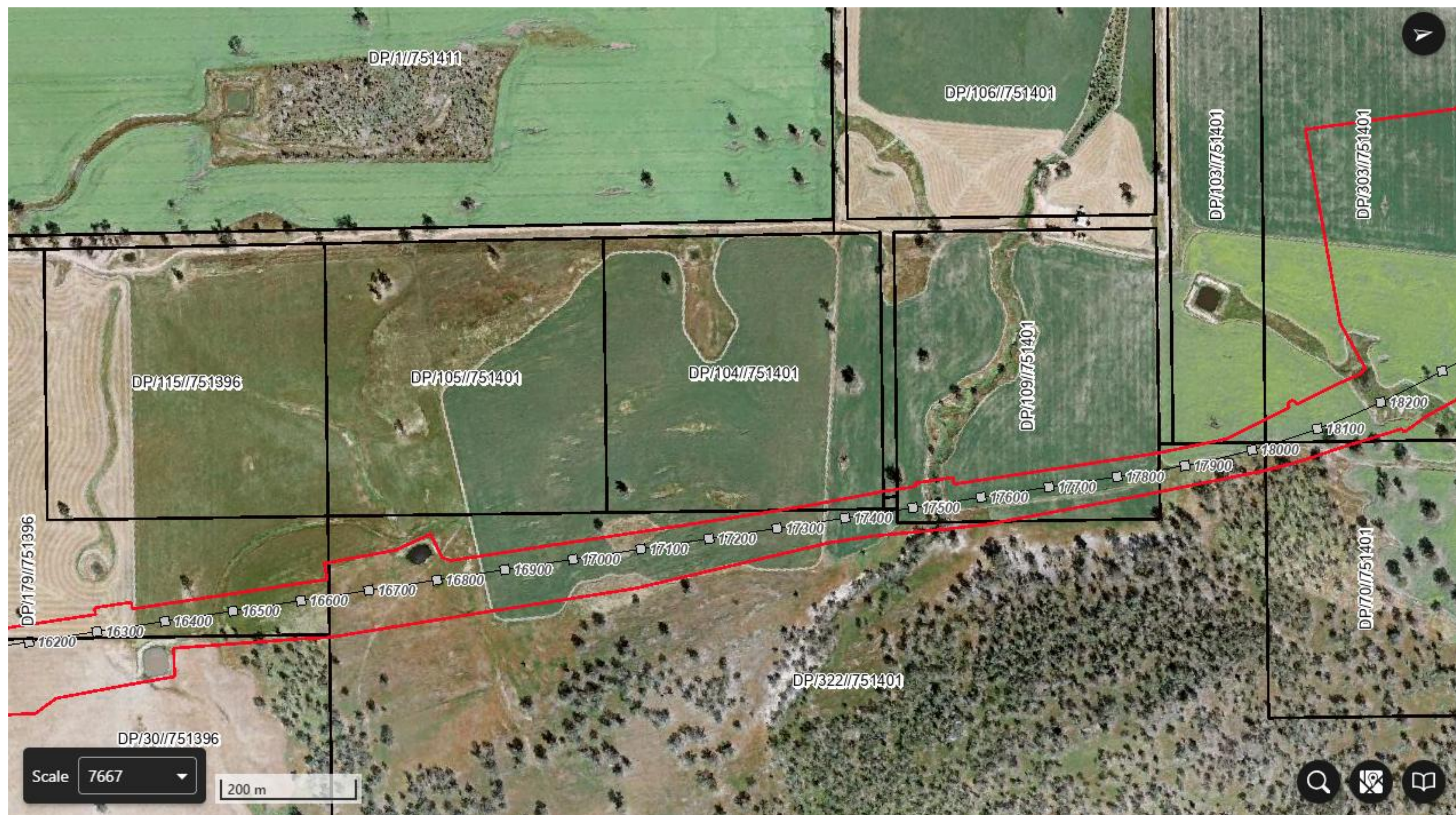


**Inland Rail – Illabo to Stockinbingal**  
Premise Boundary Map  
EPL Number – 22021  
Revision – 01  
Sheet 14 of 27

<b>Drafted:</b> Ryan Maxwell
<b>Reviewed:</b> Dan Lidbetter
<b>Approved:</b> Andy Robertson
<b>Issue date:</b> 11/08/2025

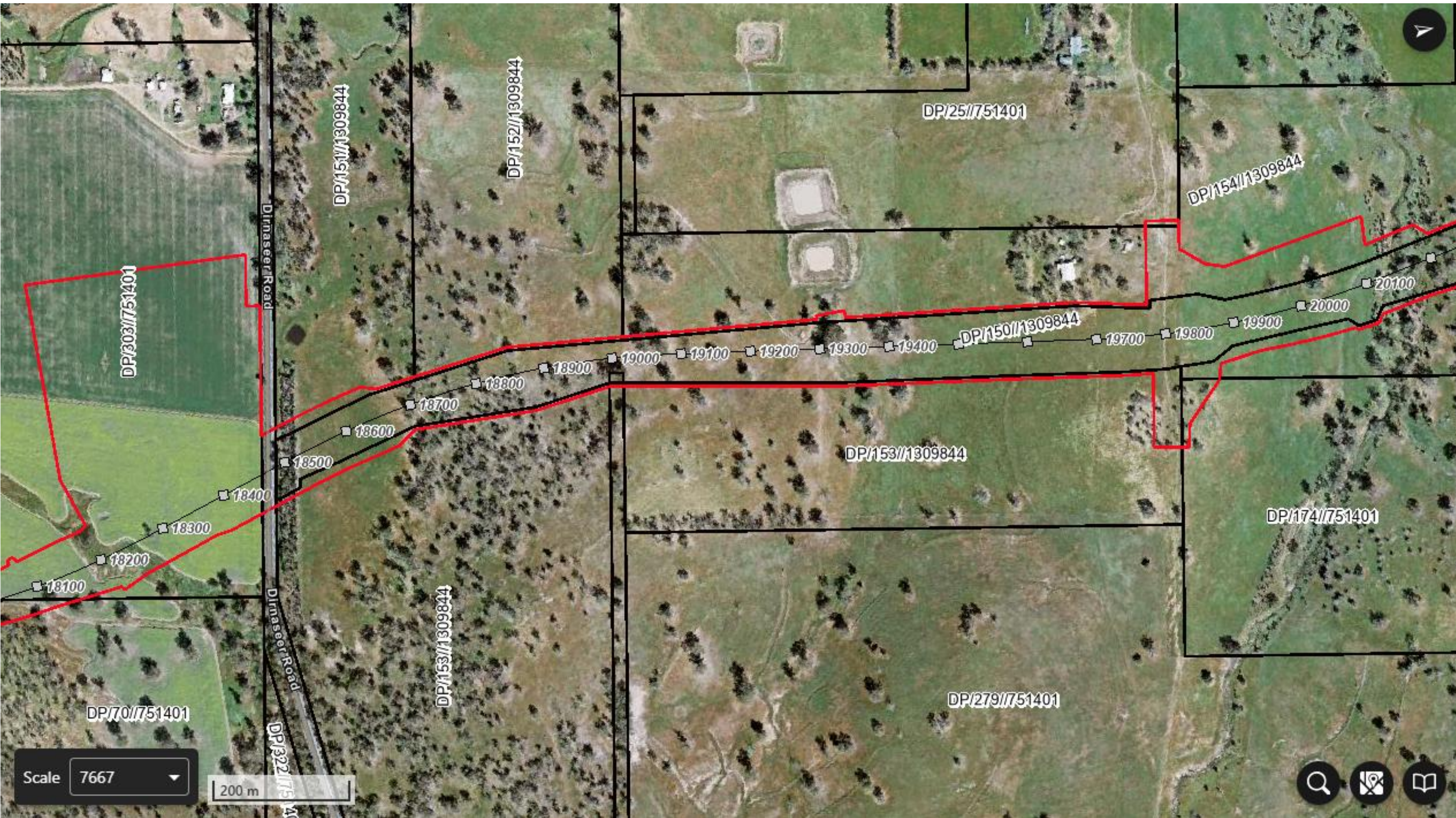
- Legend**
- EPL Premise Boundary
  - Cadastral/Property Boundary
  - ◆ Chainage marker





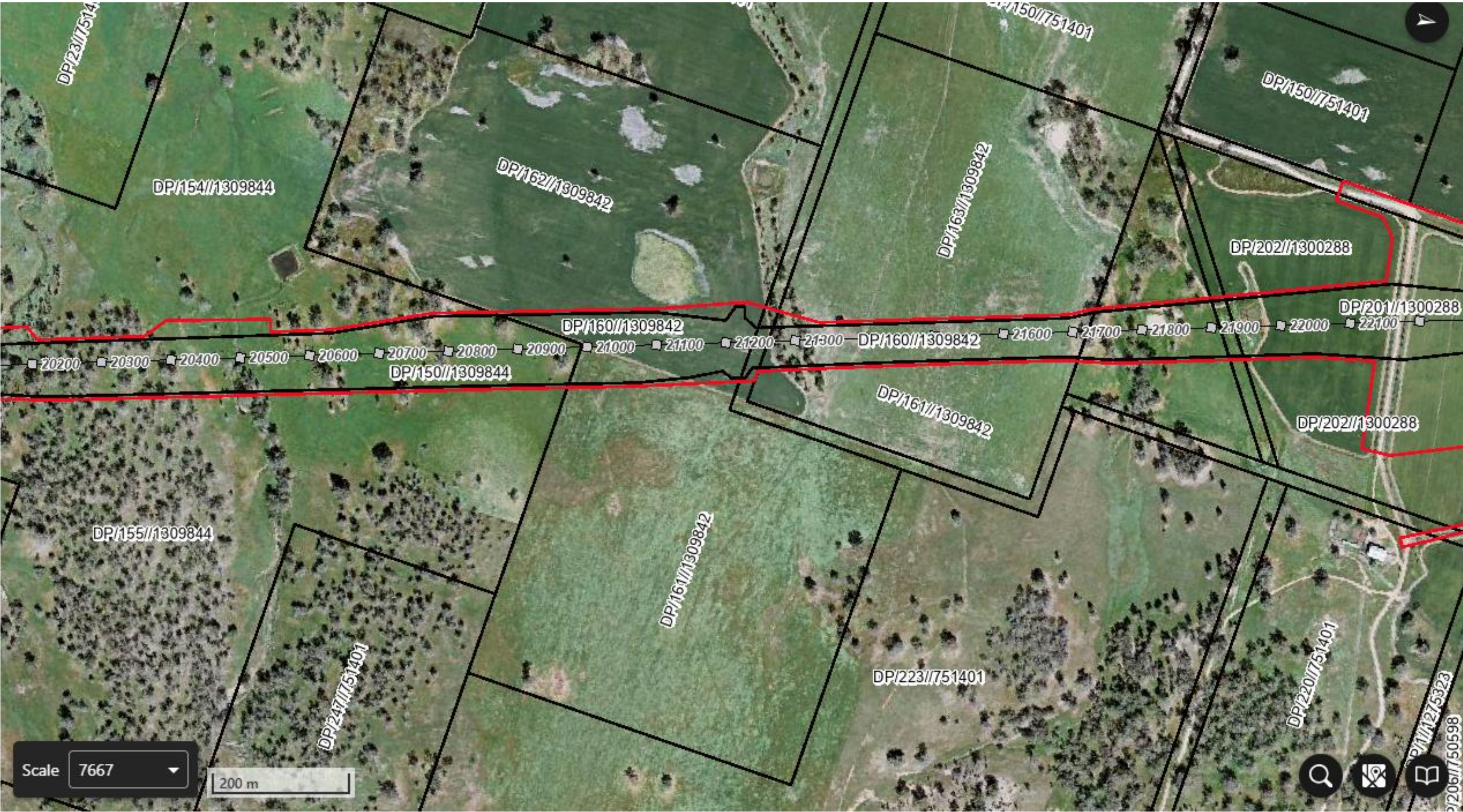
<b>Inland Rail – Illabo to Stockinbingal</b> Premise Boundary Map EPL Number – 22021 Revision – 01 Sheet 15 of 27	<b>Drafted:</b> Ryan Maxwell	<b>Legend</b> <div> <div></div> EPL Premise Boundary <div></div> Cadastral/Property Boundary <div></div> Chainage marker </div>
	<b>Reviewed:</b> Dan Lidbetter	
	<b>Approved:</b> Andy Robertson	
	<b>Issue date:</b> 11/08/2025	





<b>Inland Rail – Illabo to Stockinbingal</b> Premise Boundary Map EPL Number – 22021 Revision – 01 Sheet 16 of 27	<b>Drafted:</b> Ryan Maxwell	<b>Legend</b>  EPL Premise Boundary Cadastral/Property Boundary Chainage marker
	<b>Reviewed:</b> Dan Lidbetter	
	<b>Approved:</b> Andy Robertson	
	<b>Issue date:</b> 11/08/2025	





<b>Inland Rail – Illabo to Stockinbingal</b> Premise Boundary Map EPL Number – 22021 Revision – 01 Sheet 17 of 27	<b>Drafted:</b> Ryan Maxwell	<b>Legend</b>  EPL Premise Boundary  Cadastral/Property Boundary  Chainage marker
	<b>Reviewed:</b> Dan Lidbetter	
	<b>Approved:</b> Andy Robertson	
	<b>Issue date:</b> 11/08/2025	





<b>Inland Rail – Illabo to Stockinbingal</b> Premise Boundary Map EPL Number – 22021 Revision – 01 Sheet 18 of 27	<b>Drafted:</b> Ryan Maxwell	<b>Legend</b> <div> <div></div> EPL Premise Boundary <div></div> Cadastral/Property Boundary <div></div> Chainage marker </div>
	<b>Reviewed:</b> Dan Lidbetter	
	<b>Approved:</b> Andy Robertson	
	<b>Issue date:</b> 11/08/2025	





**Inland Rail – Illabo to Stockinbingal**  
Premise Boundary Map  
EPL Number – 22021  
Revision – 01  
Sheet 19 of 27

**Drafted:** Ryan Maxwell

**Reviewed:** Dan Lidbetter

**Approved:** Andy Robertson

**Issue date:** 11/08/2025

**Legend**

- EPL Premise Boundary
- Cadastral/Property Boundary
- ◆ Chainage marker





**Inland Rail – Illabo to Stockinbingal**

Premise Boundary Map

EPL Number – 22021

Revision – 01

Sheet 20 of 27

**Drafted:** Ryan Maxwell

**Reviewed:** Dan Lidbetter

**Approved:** Andy Robertson

**Issue date:** 11/08/2025

**Legend**

- EPL Premise Boundary
- Cadastral/Property Boundary
- ◆ Chainage marker





**Inland Rail – Illabo to Stockinbingal**

Premise Boundary Map  
EPL Number – 22021  
Revision – 01  
Sheet 21 of 27

**Drafted:** Ryan Maxwell

**Reviewed:** Dan Lidbetter

**Approved:** Andy Robertson

**Issue date:** 11/08/2025

**Legend**

- EPL Premise Boundary
- Cadastral/Property Boundary
- ◆ Chainage marker





**Inland Rail – Illabo to Stockinbingal**  
Premise Boundary Map  
EPL Number – 22021  
Revision – 01  
Sheet 22 of 27

**Drafted:** Ryan Maxwell

**Reviewed:** Dan Lidbetter

**Approved:** Andy Robertson

**Issue date:** 11/08/2025

**Legend**

- EPL Premise Boundary
- Cadastral/Property Boundary
- ◆ Chainage marker





**Inland Rail – Illabo to Stockinbingal**  
Premise Boundary Map  
EPL Number – 22021  
Revision – 01  
Sheet 23 of 27

**Drafted:** Ryan Maxwell

**Reviewed:** Dan Lidbetter

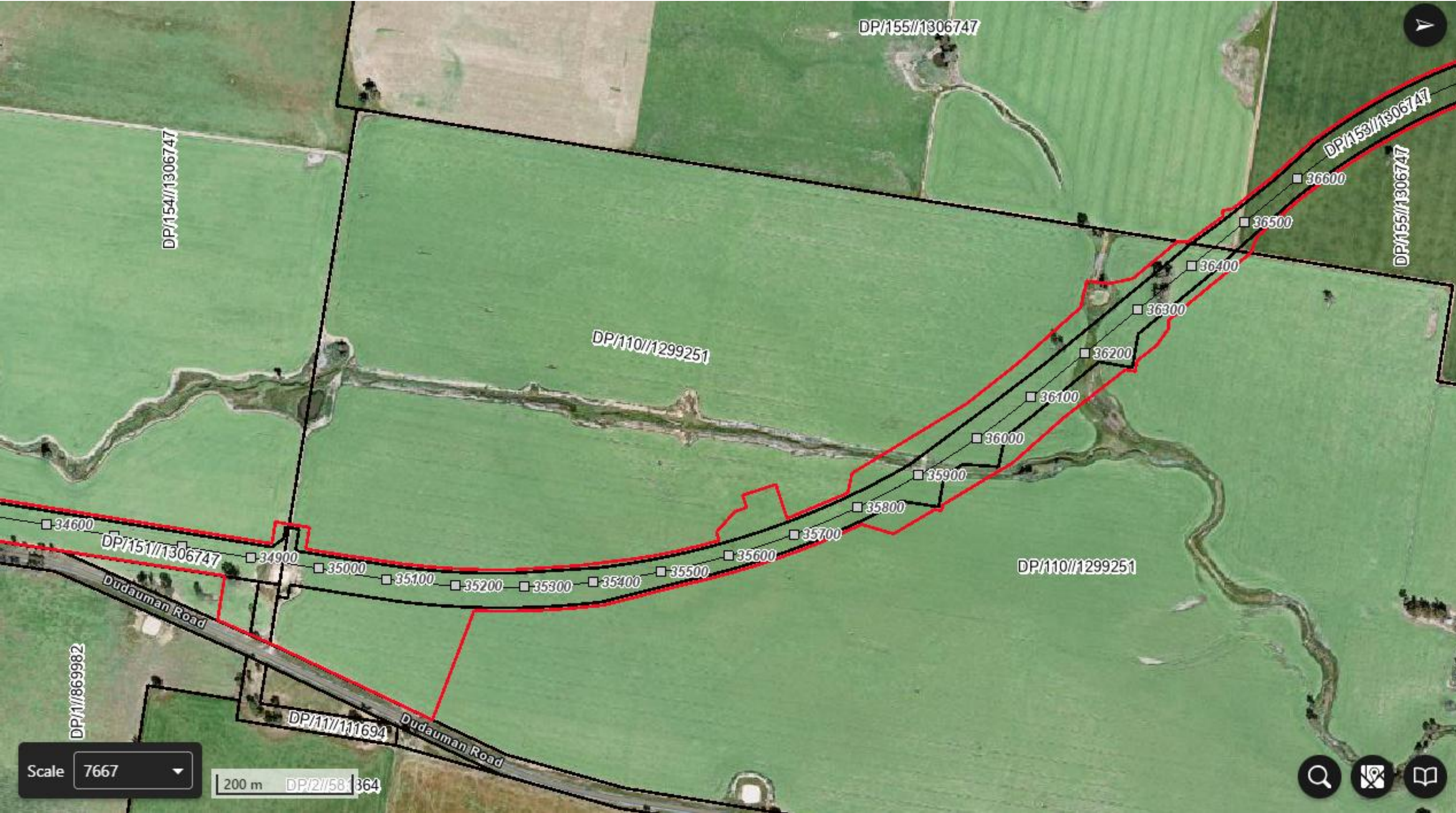
**Approved:** Andy Robertson

**Issue date:** 11/08/2025

**Legend**

- EPL Premise Boundary
- Cadastral/Property Boundary
- ◆ Chainage marker





**Inland Rail – Illabo to Stockinbingal**  
Premise Boundary Map  
EPL Number – 22021  
Revision – 01  
Sheet 24 of 27

<b>Drafted:</b> Ryan Maxwell
<b>Reviewed:</b> Dan Lidbetter
<b>Approved:</b> Andy Robertson
<b>Issue date:</b> 11/08/2025

- Legend**
- EPL Premise Boundary
  - Cadastral/Property Boundary
  - ◆ Chainage marker





<b>Inland Rail – Illabo to Stockinbingal</b> Premise Boundary Map EPL Number – 22021 Revision – 01 Sheet 25 of 27	<b>Drafted:</b> Ryan Maxwell	<b>Legend</b>  — EPL Premise Boundary — Cadastral/Property Boundary ◆ Chainage marker
	<b>Reviewed:</b> Dan Lidbetter	
	<b>Approved:</b> Andy Robertson	
	<b>Issue date:</b> 11/08/2025	





**Inland Rail – Illabo to Stockinbingal**  
Premise Boundary Map  
EPL Number – 22021  
Revision – 01  
Sheet 26 of 27

**Drafted:** Ryan Maxwell

**Reviewed:** Dan Lidbetter

**Approved:** Andy Robertson

**Issue date:** 11/08/2025

**Legend**

- EPL Premise Boundary
- Cadastral/Property Boundary
- ◆ Chainage marker





**Inland Rail – Illabo to Stockinbingal**  
Premise Boundary Map  
EPL Number – 22021  
Revision – 01  
Sheet 27 of 27




**Drafted:** Ryan Maxwell

**Reviewed:** Dan Lidbetter

**Approved:** Andy Robertson

**Issue date:** 11/08/2025

**Legend**

-  EPL Premise Boundary
-  Cadastral/Property Boundary
-  Chainage marker