



# Albury to Illabo Community Consultative Committee

Albury sub-committee

Wednesday 5 November 2025

**INLAND  
RAIL** 

# Acknowledgement of Country

Inland Rail acknowledges the Traditional Custodians of the land on which we meet today, and pay our respects to their Elders past and present. We extend that respect to Aboriginal and Torres Strait Islander peoples here today.

**INLAND  
RAIL** 





# Conflicts of interest

Garry West – Chair CCC

INLAND  
RAIL 



# Agenda

- ▶ Actions from previous meeting
- ▶ Program and project update
- ▶ Planning and Environmental update
- ▶ Community update
- ▶ General Business

# Actions from Previous Meetings



No actions from previous meeting

# Introduction/Presenters

## **Malcolm Clark**

Project Director - A2I/S2P

## **Rachael Labruyere**

Environmental Manager – A2P

## **Kate Hardy**

Stakeholder Engagement Lead - A2I







# Program and Project Update

Malcolm Clark – Project Director A2I/S2P

INLAND  
RAIL 

# Adjacent Projects Update

## Illabo to Stockinbingal (I2S)

- Fencing of the rail corridor commenced at multiple locations with priority to secure the alignment and establish a clear and safe working area with direct access for site teams
- Establishing site compounds along the alignment
- Low impact works such as survey works, site investigations, cultural investigations and preparation of site laydowns and compound locations are nearing completion
- Temporary workers accommodation - works are progressing well, the camp kitchen, laundry and first 100 beds installed. In operation since September possession.

## Stockinbingal to Parkes (S2P)

- Overhead wires investigations underway with relocations to commence in the new year



Temporary Workers Accommodation



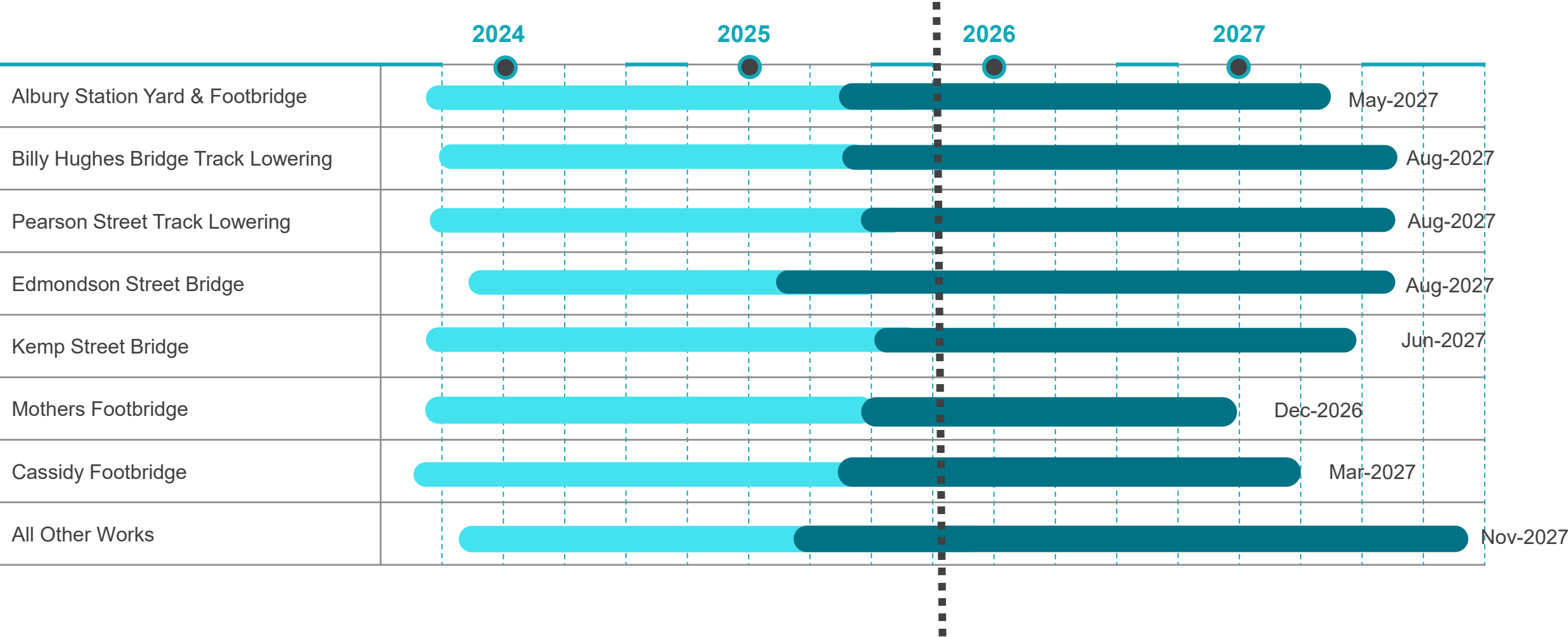
Recreation  
& wet mess



# A2I Program

Design

Construction





# A2I Project Update

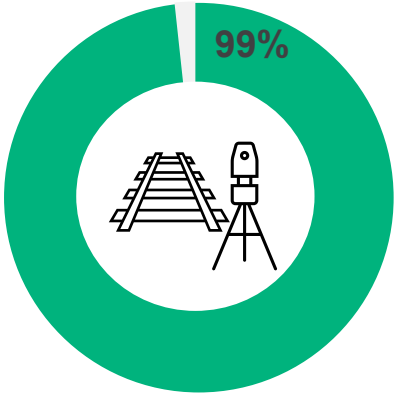
- ▶ Major works completed during the September possession
- ▶ Temporary closure of Edmondson St bridge Wagga Wagga to commence late November for a 2-week traffic trial, including the implementation of new school and community bus timetables and routes
- ▶ Upcoming possession scheduled for early December

# A2I Design Progress

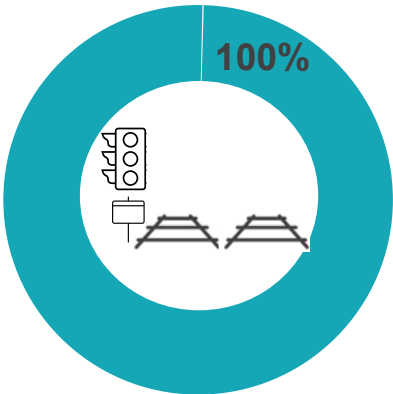
Martinus  
Design – ITC  
Contract

INLAND  
RAIL

Clearance Sites

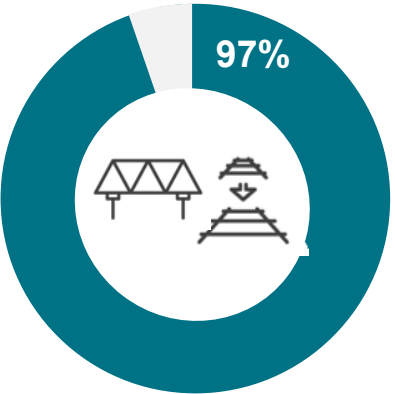


Junee to Illabo

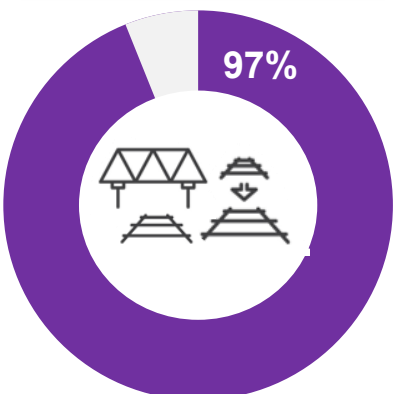


Overall Design Progress:  
97% Complete

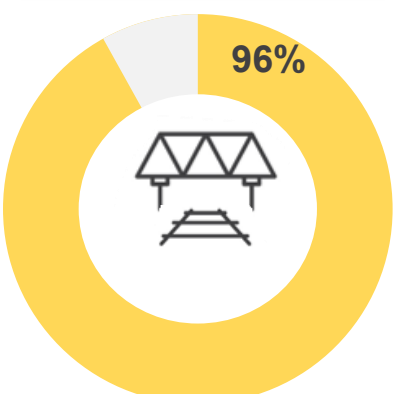
Albury Sites



Wagga Sites



Junee Sites

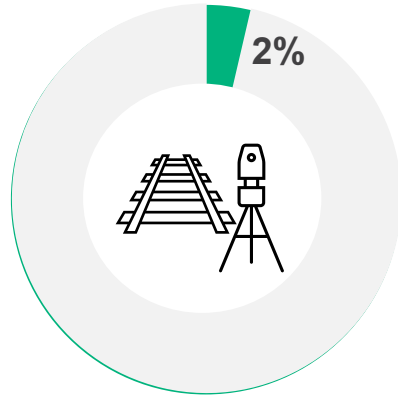




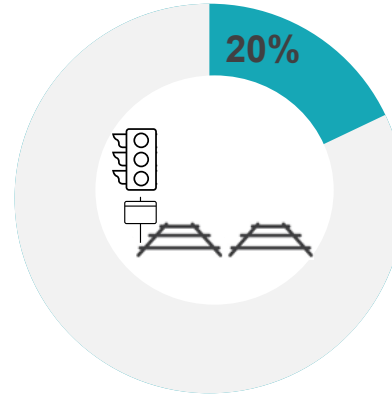
# A2I Construction Progress

**Martinus  
Construction  
– ITC  
Contract**

## Clearance Sites

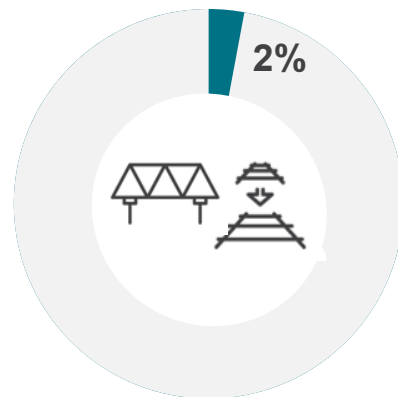


## Junee to Illabo

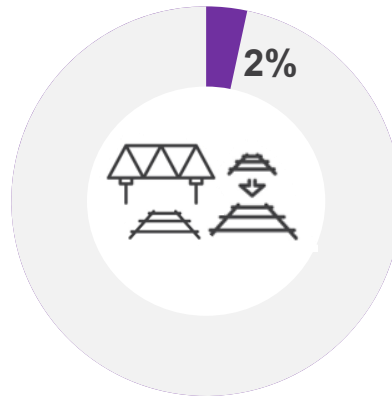


**Overall Construction Progress:  
30% Complete**

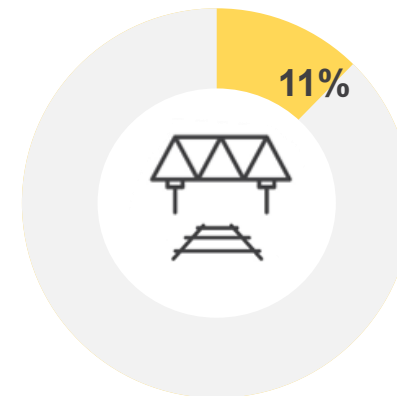
## Albury Sites



## Wagga Sites



## Junee Sites



# September Possession

- ▶ Track and drainage work at Riverina Highway bridge
- ▶ Surveying and environmental sampling
- ▶ Earthworks
- ▶ Clearing and grubbing
- ▶ Geotechnical and service investigations, including non-destructive digging (NDD)
- ▶ Established construction zones and laydown areas





# Track Talk: Albury to Illabo progress update from 60-hour possession





# Lookahead

Timing	Activity
November 2025	<ul style="list-style-type: none"><li>• Geotechnical and survey investigations – Culcairn Railway Station and Henty Railway Station</li><li>• Commence site compound facilities in Albury</li><li>• Continue works at Albury Station , utility work and relocation of Sydney Trains carpark</li><li>• Culcairn – site establishment and mobilisation</li><li>• Table Top – site establishment</li><li>• Billy Hughes – site establishment ; revising standard construction hours – Community Agreement required</li></ul>
December 2025	<ul style="list-style-type: none"><li>• December possession (December 6-8)<ul style="list-style-type: none"><li>○ Albury Station</li><li>○ Table Top</li><li>○ Culcairn</li></ul></li><li>• Culcairn<ul style="list-style-type: none"><li>○ December 2025 – January 2026: Culcairn pedestrian bridge demolition</li></ul></li><li>• Albury<ul style="list-style-type: none"><li>○ Closure of Albury Station Pedestrian bridge, pedestrian detours in place via Harold Mair bridge and Amatex St bridge prior to possession</li></ul></li></ul>
Quarter 1 2026	<ul style="list-style-type: none"><li>• Culcairn<ul style="list-style-type: none"><li>○ March 2026 – Gantry knee braces modification</li></ul></li></ul>

# December Possession

## Albury:

- ▶ Albury Station footbridge demolition – carried over from the September possession. Securing property approvals
- ▶ Table Top – removal and demolition of gantry; demolition of concrete footings

## Greater Hume:

- ▶ Culcairn Pedestrian Bridge removal





# Planning and Environment

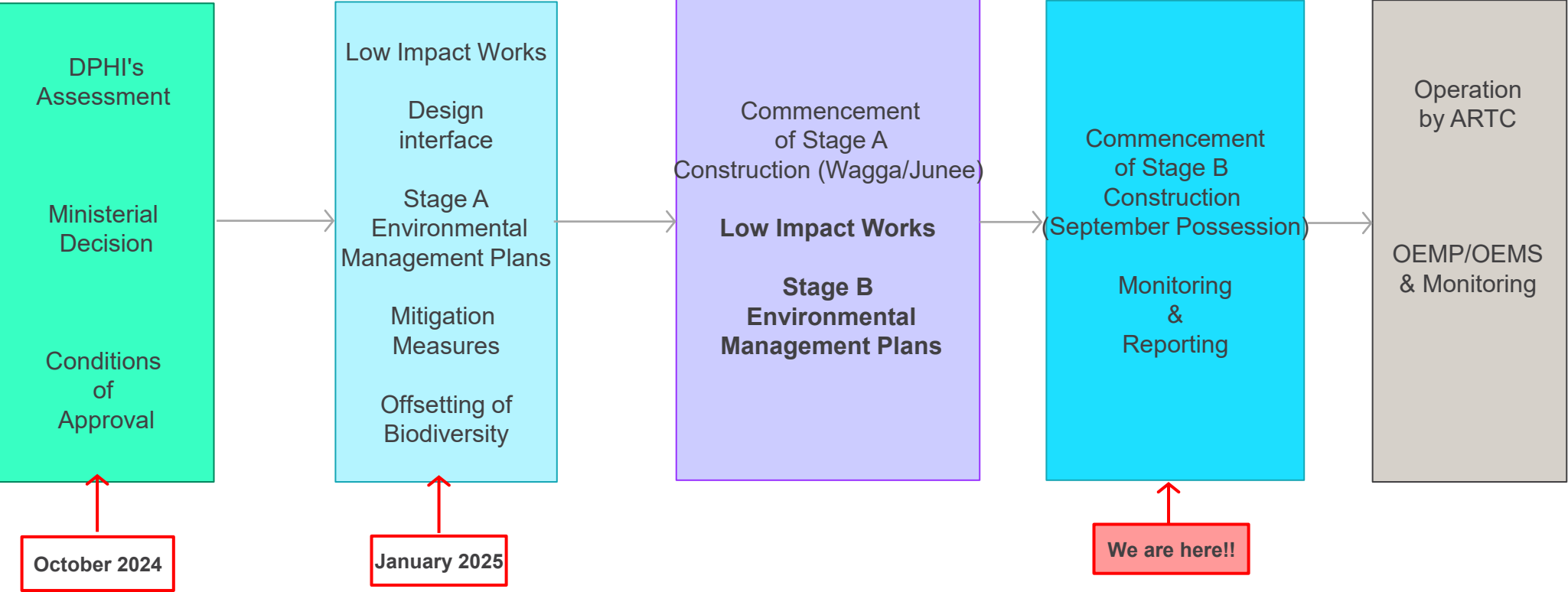
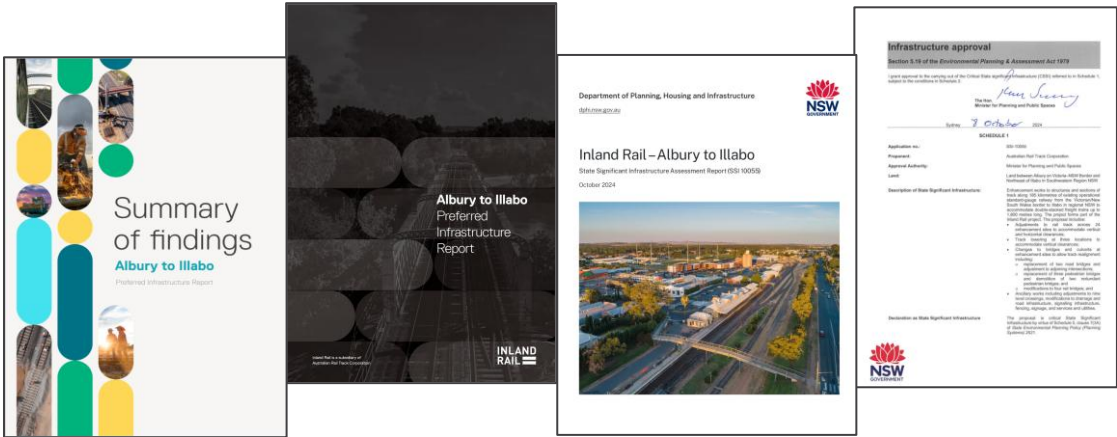
Rachael Labruyere - Environment Manager A2P

**INLAND  
RAIL** 





# Approvals and Construction



# Air Quality Monitoring

Air Quality monitoring locations determined based on:

- ▶ Idling locations (sidings and loops)
- ▶ Distance to receivers (within 150m)
- ▶ Access to Power

Rural and Urban monitoring locations identified. All locations are within the rail corridor on ARTC land. Weather stations to be installed at monitoring locations:

- ▶ Yerong Creek (Rural)
- ▶ The Rock (Rural)
- ▶ Junee (Urban)
- ▶ Wagga (Urban)

Ambient Air Quality monitoring parameters include:

- ▶ NO2 (1hour)
- ▶ NO2 (Annual)
- ▶ PM2.5 (24-Hour)

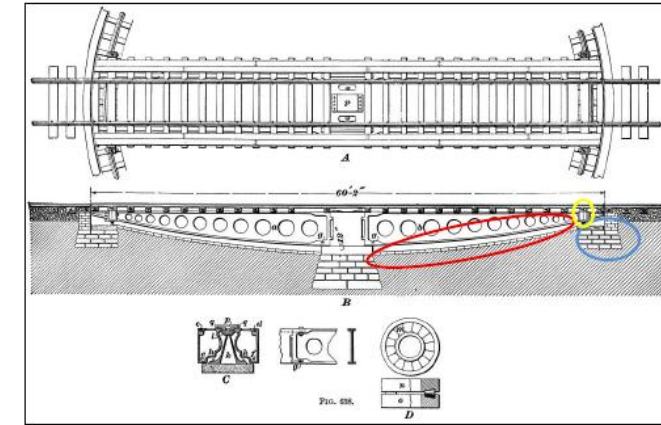
Air Quality Monitoring Plan





# Albury Heritage Unexpected Find

- ▶ Identified during signalling non-destructive digging excavation works
- ▶ Located 19m and 35m north of Albury Station Platform within the Project Construction Impact Zone
- ▶ Unexpected Find 1 was considered to be a small turntable connected to a docking platform.
- ▶ Unexpected Find 2 was considered to be an 8ft culvert that runs diagonally from the eastern to western side of the corridor.







# Community Update

Kate Hardy – Stakeholder Engagement Lead A2I

**INLAND  
RAIL**

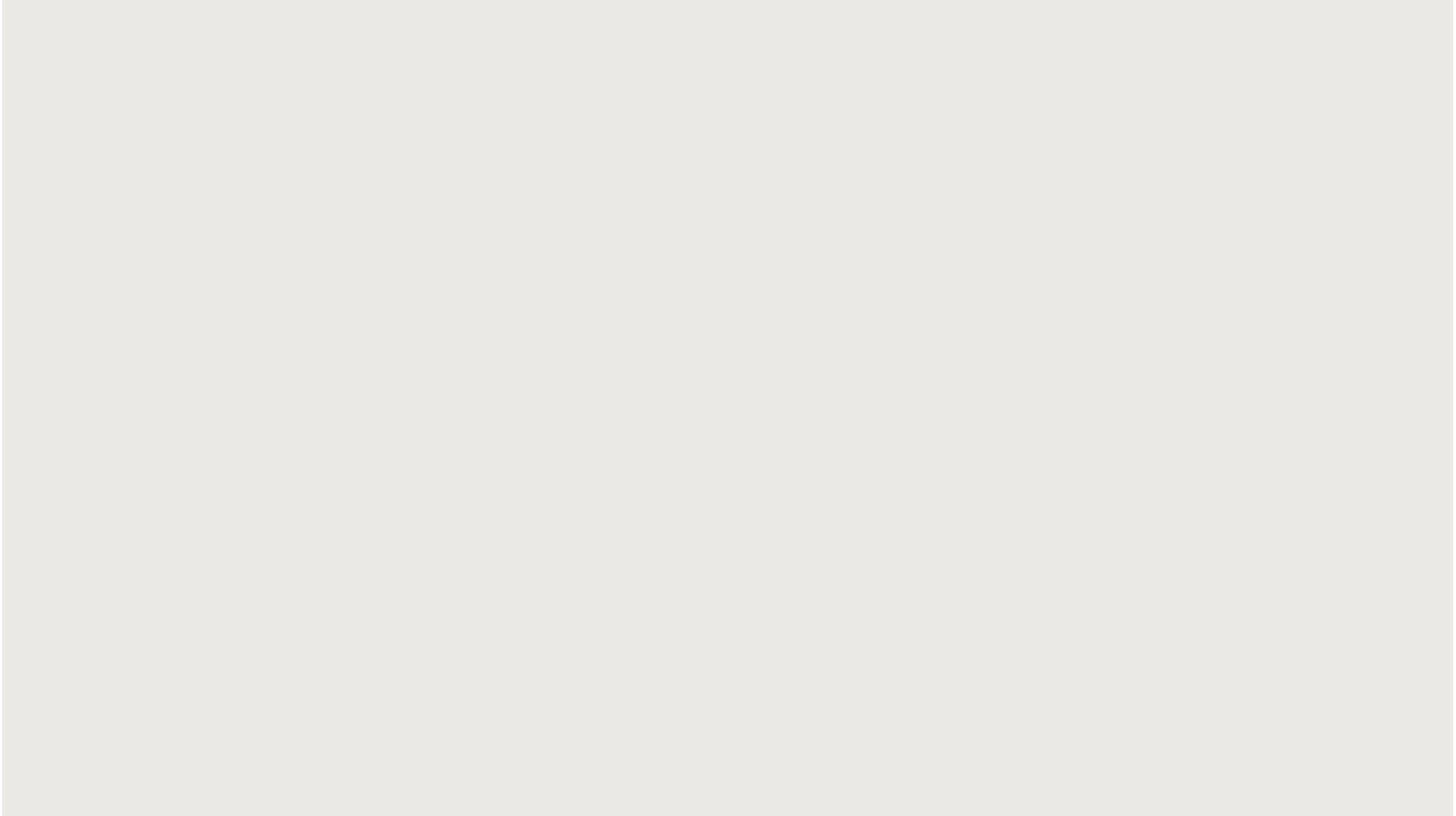


# Engagement Update

- ▶ Monthly monitoring meetings with Albury Council and Greater Hume Council, and our delivery partner, Martinus
- ▶ Albury Station pedestrian bridge visualisations engagement
  - ▶ Door knocking: August 18/19; August 25/26
  - ▶ Social media and media releases
  - ▶ Community information sessions: Albury Train Station and West End Plaza, August 28
  - ▶ Stakeholder meetings: Rail Heritage Committee, Albury Council, Albury Train Station, Scots School, Albury Public
- ▶ **Table Top** community centre - drop-in information session, August 28
- ▶ Culcairn Development Committee – August 25



# Albury Station Pedestrian Bridge - Animation





# Engagement Update

Show	Engagement
Wagga Wagga	175 (2 days)
Henty Field Days	382 (3 days)
Culcairn	130
Lockhart Spirit of the Land	217
Illabo	70
The Rock	175
Junee	130



Henty Field Days



# Upcoming Community Engagement Activities

- ▶ Greater Hume Councillor briefing 19 November 2025; note Albury Council has asked for a written update rather than in-person briefing
- ▶ Waluwin Festival, November 15
- ▶ Albury Community Information Sessions – late November
- ▶ ONVR Community Information Sessions:
  - Gerogery, November 12
  - Henty, November 12
  - Culcairn, November 13

## Successful Grants

- ▶ Lavington Jindera Little Athletics Centre



# First Nations Partnerships

- ▶ EOI First Nations Artist for A2I project is now live.
- ▶ Clontarf and Stars Awards ceremonies Term 4
- ▶ Clontarf Training Morning, JHG, MR and IR attending





# Community Benefits

Inland Rail is a national project with local benefits, generating jobs and economic opportunities for our regions and communities right across Australia.



Albury to Illabo/  
Stockinbingal to  
Parkes

July 2023 to September 2025



# Inland Rail Skills Academy

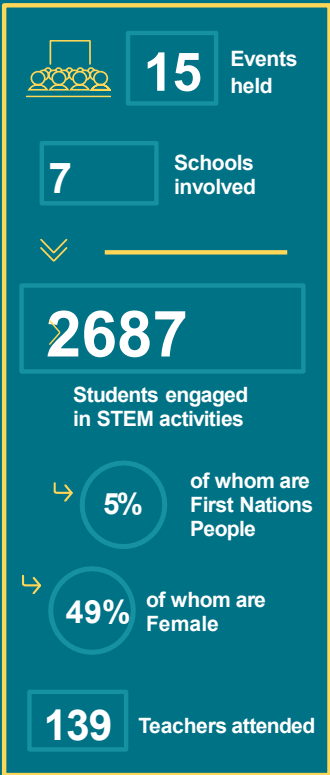
2019 – September 2025 Albury LGA



INLAND  
RAIL

We invest in Inland Rail alignment communities by partnering with experts to grow a local supply of businesses and future workers equipped for the 21<sup>st</sup> century.

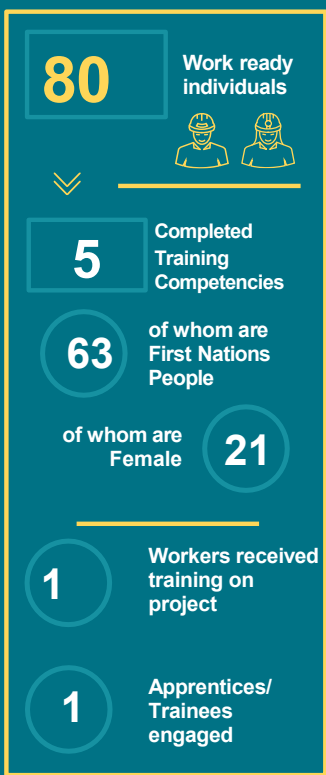
**STEM PARTNERSHIPS**



**UPSKILLING LOCAL BUSINESSES**



**SKILLS TRAINING**



**COMMUNITY GRANTS**



**PROJECT WORKFORCE**



**PROJECT PROCUREMENT**



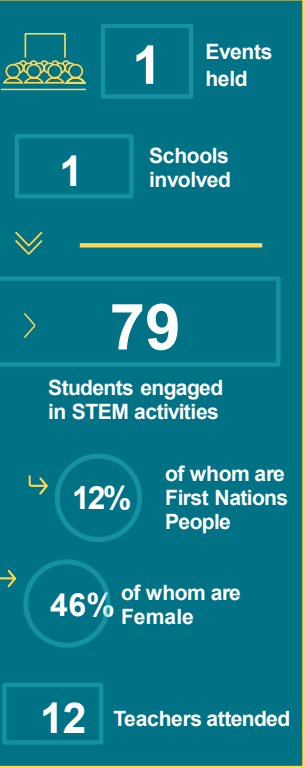
# Inland Rail Skills Academy

2019 – September 2025    Greater Hume Shire LGA

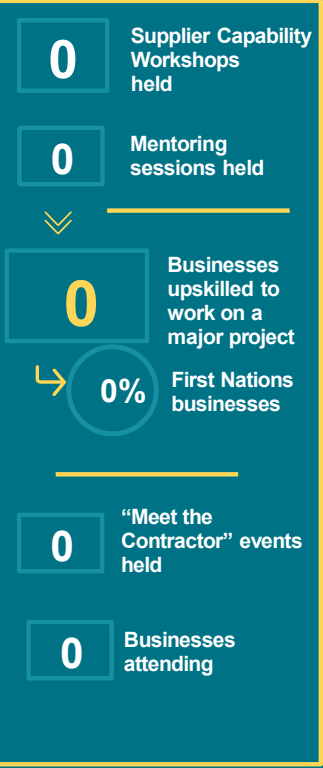


We invest in Inland Rail alignment communities by partnering with experts to grow a local supply of businesses and future workers equipped for the 21<sup>st</sup> century.

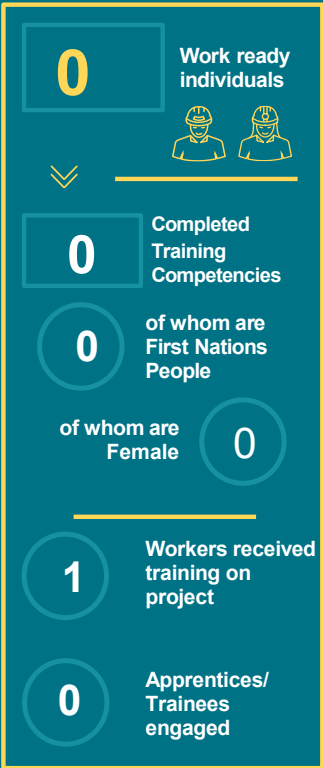
STEM PARTNERSHIPS



UPSKILLING LOCAL BUSINESSES



SKILLS TRAINING



COMMUNITY GRANTS



PROJECT WORKFORCE



PROJECT PROCUREMENT







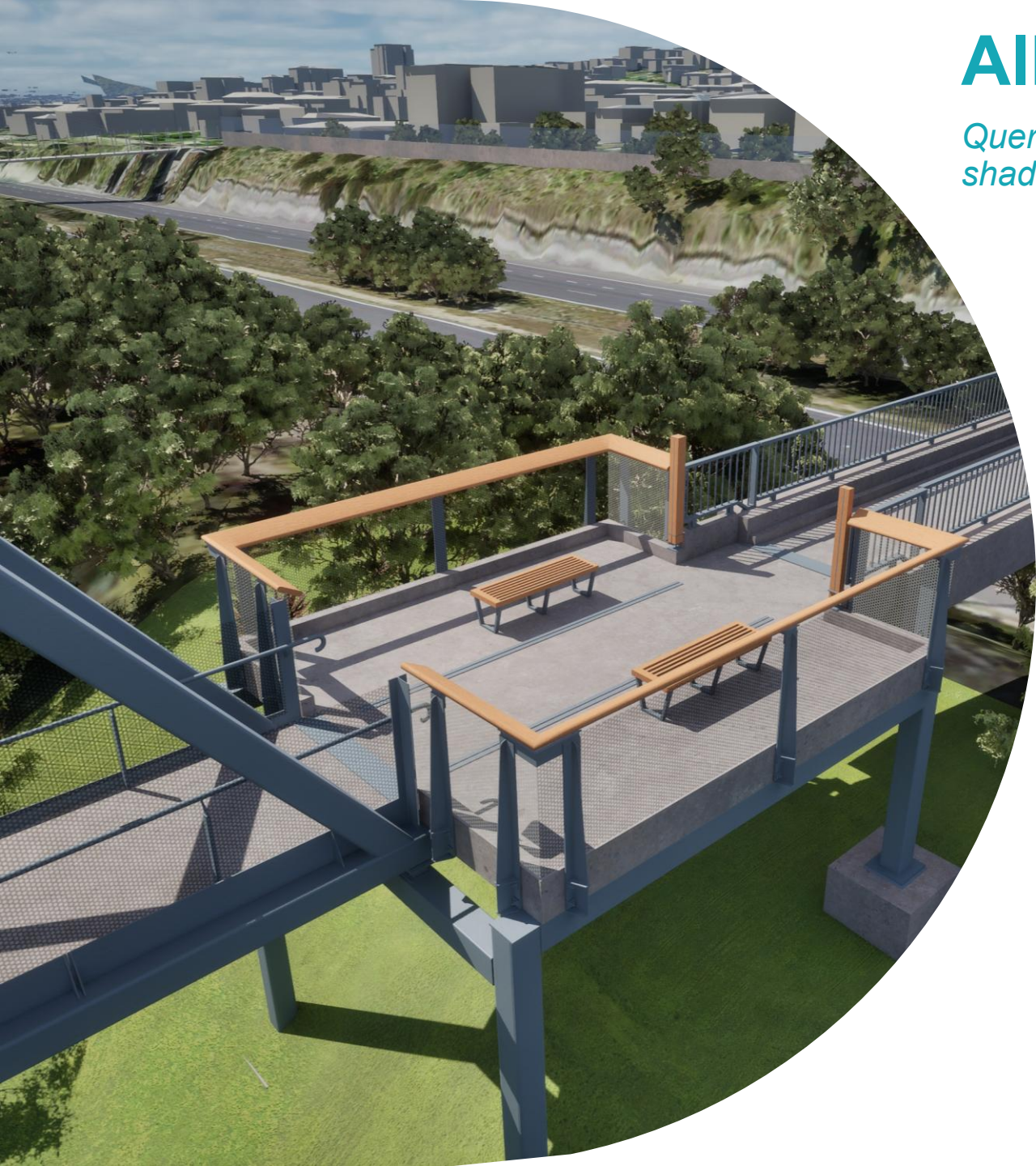
# General Business

Garry West – Chair CCC

**INLAND  
RAIL** 







# Albury Station Footbridge

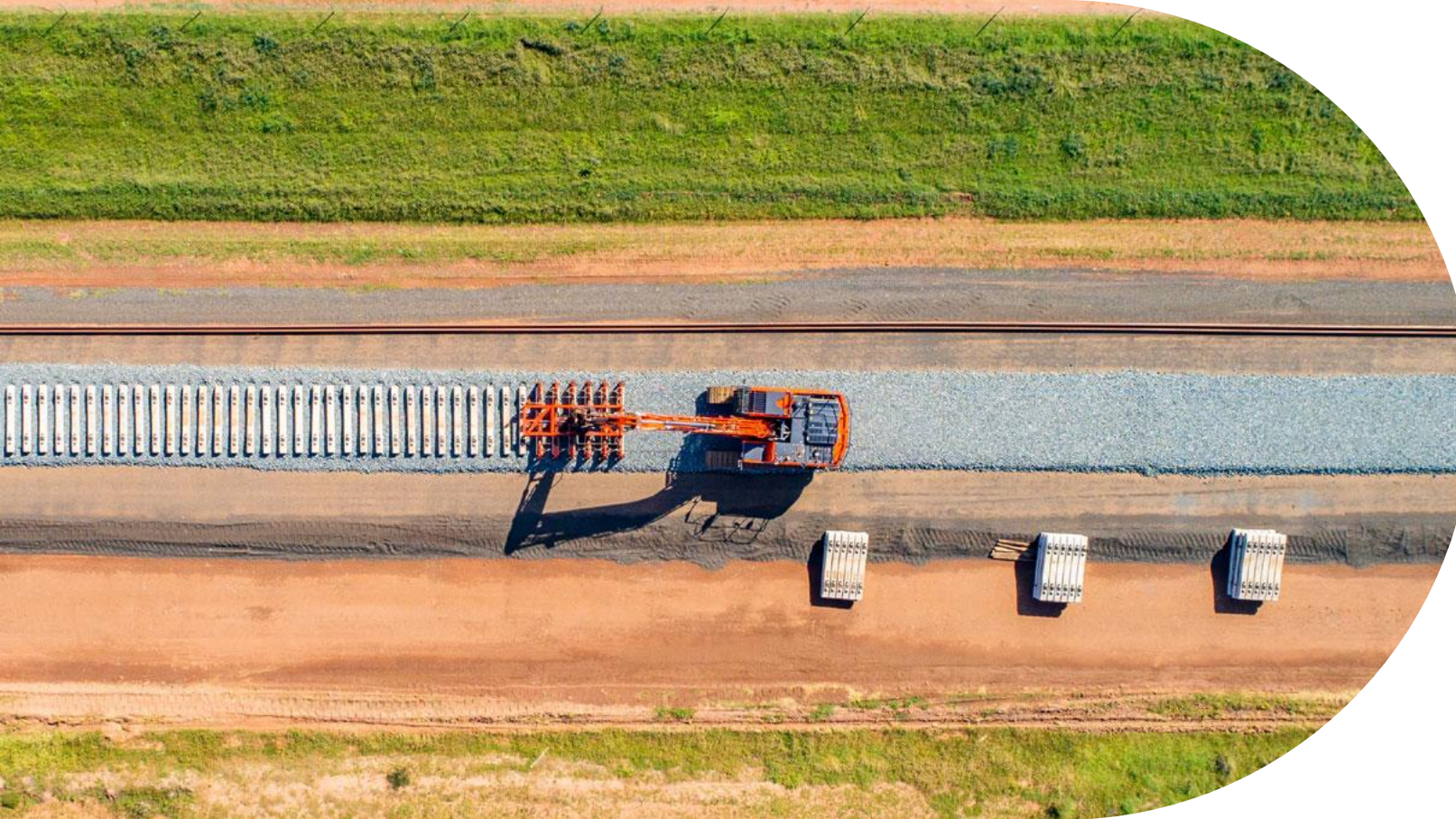
*Query from the Border Rail Action Group on design of rest area – shade structure and photography suitability*

- ▶ Through consultation with the State Design Review Panel, First Nation communities and Albury Heritage Society, the Albury Footbridge design incorporates an intermediate rest area which provides an informative pause point for pedestrians, providing amenity to rest, interpretation, and heritage appreciation as part of the pedestrian journey across the rail corridor
- ▶ Rest area is away from the train running lines, therefore, taller throw screens are not required in this location, photographing can occur without interference with the barriers on the rest area being 1.2m high
- ▶ Steel cleats have also been incorporated into the footbridge truss structure to allow for the installation of a future shade structure by Other parties (not as part of these works).
- ▶ Trees will be planted in close proximity to the rest area to provide shading.

## Key design features:

- ▶ Integrated Bench Seating
- ▶ Heritage Interpretation Signage
- ▶ Historic Post Reuse
- ▶ Interpretive Floor Inlays





# Conclusion and confirmation of actions

Garry West – Chair CCC

**INLAND  
RAIL** 







**Thank you**